

NEW ZEALAND NOTICES TO MARINERS

Notices

NZ 162 – 168

© Crown Copyright 2008. All rights Reserved. Permission is not required to make analogue copies of these Notices but such copies are not to be sold.

CONTENTS

- I [Explanatory Notes.](#)
 - II [New Zealand Notices to Mariners.](#)
 - III [Corrections to New Zealand Light List.](#)
 - IV [Corrections to Sailing Directions and New Zealand Publications.](#)
 - V [Navigational Warnings. \(NAVAREA XIV\)](#)
 - VI [Corrections to Admiralty List of Radio Signals.](#)
-

New Zealand Notices to Mariners are the authority for correcting New Zealand charts within the New Zealand area of charting responsibility as shown in Notice No. 1.

Mariners are requested to immediately inform Land Information New Zealand, Private Box 5501 Wellington 6145, New Zealand Phone : 0800 665 463 or (04) 460-0110 Fax: (04) 460-0161 or e-mail: info@linz.govt.nz, of the discovery of new or suspected dangers to navigation, or shortcomings in charts and publications.

Changes or defects in aids to navigation should be reported to the Rescue Coordination Centre New Zealand (RCCNZ) via the nearest New Zealand Coastal Maritime Radio Station Phone : (04) 577-8030 Fax : (04) 577-8038 or (04) 577-8041 e-mail: rccnz@maritimenz.govt.nz.

Copies of these Notices can be obtained from Land Information New Zealand, Maritime New Zealand, Principal Chart Agents at the major ports of New Zealand and the Internet: <http://www.linz.govt.nz>

EXPLANATORY NOTES

Charts. The notices in Section II give instructions for the correction of charts. Geographical positions refer to the largest scale chart unless otherwise stated. They are normally given in degrees, minutes and decimals of a minute, but may occasionally quote seconds for convenience when plotting from the graduation of some older-style charts. Bearings are true reckoned clockwise from 000° to 359°; those relating to lights are given as seen by an observer from seaward. Symbols referred are those shown in publication *INT 1*.

Alterations to depth contours, deletion of depths to make way for new detail, etc. are not mentioned unless they have some navigational significance.

Blocks or notes accompanying notices in Section II are placed after Section VI.

Temporary and Preliminary Notices. These are indicated by (T) or (P) after the notice number. A list of (T) and (P) Notices in force is published in the fortnightly Editions of Notices to Mariners. Charts are not corrected for them before issue; they should be corrected in pencil on receipt.

Light Lists. The detailed correction to the Light List is given in Section III and may not be published in the same edition as the chart correcting notice. The entire entry for each light is printed, and an asterisk (*) is shown under the column which contains an amendment. In the case of a new light, an asterisk (*) appears under all the columns. New and extensively altered entries are intended to be pasted in. It is recommended that a manuscript entry be made for all shorter corrections.

It is emphasized that the List of Lights is the authority for lights and that many alterations, especially those of a temporary but operational nature, may only be promulgated as corrections to the List of Lights.

Radio Signals. When radio signals are affected by a notice the Admiralty List of Radio Signals reference number is quoted. The detailed correction to the List of Radio Signals is given in Section VI and may be published in a later edition than the chart correcting notice.

Sailing Directions Corrections to Sailing Directions are given in Section IV. It is recommended that such corrections be kept together in a file with the latest list of those in force on top. The file can then be consulted when using the parent book to see if any notices affecting the area under consideration are extant.

Corrections should not be pasted into the parent book or Supplement as corrections may be issued between closing date and issue of a new Supplement. These will be embodied in the text of the following Supplement. A summary of corrections in force will be issued in Section IV of the Fortnightly Edition at monthly intervals.

New Zealand Publications. Corrections to New Zealand Publications are given in Section IV.

Correction of Charts and Publications by the User. New Zealand Notices to Mariners contain important information and should be used to keep the specified charts and books up to date.

THE USE OF CHARTS AND ASSOCIATED PUBLICATIONS

Reliance on Charts and Associated Publications. While every effort is made to ensure the accuracy of the information on New Zealand charts and other publications, it should be appreciated that it may not always be complete and up to date. The mariner must be the final judge of the reliance to be placed on the information given, bearing in mind their particular circumstances, local pilotage guidance and the judicious use of available navigational aids.

Charts. Charts should be used with prudence: there are areas where the source data are old, incomplete or of poor quality. The mariner should use the largest scale appropriate for his particular purpose; apart from being the most detailed, the larger scales are usually corrected first. When extensive new information (such as a new hydrographic survey) is received, some months may elapse before it can be fully incorporated in published charts. On small scale charts of ocean areas where hydrographic information is, in many cases, still sparse, charted shoals may be in error as regards position, least depth and extent. Undiscovered dangers may exist, particularly away from well-established routes.

Further guidance. The Mariner's Handbook (NP 100) gives a fuller explanation of the limitations of charts. All users should study it in their own interest.

II

NUMERICAL INDEX OF CHARTS AFFECTED
(NZ NTM Edition No.17 dated 15 August 2008)

NZ Chart No.	NZ Notices	INT Chart No.	Notices
NZ 532	NZ 163		
NZ 533	NZ 163		
NZ 534	NZ 165(T)		
NZ 632	NZ 167(T)		
NZ 4314	NZ 166(T)		
NZ 5324	NZ 163		
NZ 5325	NZ 164		
NZ 6321	NZ 167(T)		
NZ 6422	NZ 168(T)		

NEW ZEALAND TEMPORARY AND PRELIMINARY NOTICES IN FORCE

(NZ NTM Edition No. 17 dated 15 August 2008)

NZ Notice	T/P	Charts Affected		Locality and Subject
		NZ	INT	
133/01	T	6612		Otago Hr.: Shoaling
180/03	T	6154		Picton Hr.: Shoal Depths.
129/04	T	52, 53, 522, 5227		Hauraki Gulf: Dredging Operations
194/04	P	46, 48, 61, 463, 614, 6151, 6152, 6153, 6154		Marlborough Sounds: Use of Automated Navigation Systems
110/05	T	8248		Tonga: Light Unlit
161/05	P	4633, 4634		Wellington Hr.: Navigation Safety Bylaw
173/05	T	53, 54, 531, 534, 5318		Whitianga Hr.: Sandbar
36/06	T	5215		Whangarei Hr.: Shoaling
104/06	T	4314, 4315		Manukau Hr.: Light Destroyed, Light Buoy
176/06	T	23, 26, 56, 14060, 14600	60, 600, 640	N. Island, E. Coast: Scientific Instruments
177/06	T			Indian Ocean: Operation 'Enduring Freedom'
205/06	T	532, 5324		Tamaki Strait: Motuihe Is.: E. Cardinal Lt Beacon
213/06	P	6153, 6154		Picton Hr.: Lights
234/06	T	56, 561		Hawke Bay: Research Light-Buoy
244/06	T	23, 25, 63, 64	640, 648	Lyttelton Hr.: Waverider Buoy
37/07	T	53, 532, 533, 5327		Firth of Thames: Moorings, Research Instruments
56/07	T	73		Jackson Bay: Dolphin Monitoring Sensors
63/07	T	4633		Wellington Hr.: Race Marker Buoys
80/07	T	845, 14630, 14631	630, 631	Niue Is.: Navigational Aids, Lights
127/07	P	45, 48		S. Taranaki Bight: Platform Installation
193/07	T	23, 25, 45, 48	640, 648	S. Taranaki Bight: Waverider Buoy
219/07	P	54, 542		Bay of Plenty, Opotiki: Fish Haven
220/07	T	24, 25, 29, 64, 66, 68, 69	648	Foveaux Strait Eastwards: Seismic Survey
234/07	T	5215		Whangarei Hr.: Beacons, Lights
20/08	T	54, 542		Bay of Plenty: Research Instruments
28/08	T	463, 615, 6153		Queen Charlotte Sound: Beacon, Light
35/08	T	614		Motueka River: Current Meter
44/08	T	5215		Whangarei Hr., Kioreroa Reach: Beacons
46/08	P	45, 48, 443		S. Taranaki Bight: Pipe Laying Operations
49/08	T	6422		Timaru Hr.: Light
59/08	P	45, 48, 443		S. Taranaki Bight: Pipeline Protection Areas
67/08	T	24, 25, 29		Stewart Island Southeastwards: Seismic Survey
74/08	T	66, 661		Otago Peninsula: Oceanographic Buoys
75/08	T	63, 632, 6321		Lyttelton Hr.: Current Meter
91/08	P	4424		W. Coast, Taharoa Hr.: Hr. Limits
94/08	T	63, 64		Lyttelton Hr.: Works in Progress
95/08	T	632, 6321		Lyttelton Hr.: Buoys, Lights
96/08	T	7653		Dusky Sound: Wreck
98/08	T	7142		Greymouth Hr.: Depths
105/08	P	23, 25, 45, 48, 223F, 14060, 14061, 14600, 14601	60, 61, 600, 601, 640, 648	S. Taranaki Bight: FPSO and Wellhead Installations
106/08	T	4314, 4315		Manukau Hr.: Light Damaged, Light Buoy
119/08	T	521, 5214		Bream Bay: Scientific Instrument and Buoy
123/08	T	45, 48		S. Taranaki Bight: Drilling Operations
129/08	T	561, 5612		Napier Hr.: Dredging Operations
130/08	T	4314		Manukau Hr.: Beacon
131/08	T	68, 69, 681		Foveaux Strait, Ruapuke Is.: Seabed Obstruction
132/08	T	14051, 14052, 14060, 14061, 14604, 14605, 14606, 14607, 14629	51, 52, 60, 61, 604, 605, 606, 607, 629	North, South Pacific Ocean: ATLAS Buoys
146/08	T	4265		Kaipara Hr.: Light Beacon
147/08	T	6321		Lyttelton Hr.: Works in Progress
148/08	T	7142		Greymouth Hr.: Depths
149/08	T	53, 532, 5324		Tamaki Strait, Light Sector
156/08	T			Maritime Safety Broadcasts
158/08	T	46, 463, 4633, 4634		Wellington Hr.: Buoy
159/08	T	661		Approaches to Otago Hr.: Works in Progress
160/08	T	4432		Port Taranaki: Shoaling
166/08	T	4314		Manukau Hr.: Depths
167/08	T	632, 6321		Lyttelton Hr.: Dredging Operations
168/08	T	6422		Timaru Hr.: Shoaling

NZ 162/08 NEW ZEALAND PUBLICATION – Publication Withdrawn.

NZ No. Title and other remarks

**NZ 201
(INT 1) Symbols Terms and Abbreviations Used on Charts**

Mariners are advised that information on symbols, terms and abbreviations used on nautical charts are available from the following publications:

Karte 1 (INT 1) Symbols, Abbreviations, Terms used on Charts, 6. Edition 2008 published by the German Hydrographic Office (Bundesamt für Seeschifffahrt und Hydrographie).

Chart 5011 (INT 1) Symbols and Abbreviations used on Admiralty Charts, Edition 3 published by the United Kingdom Hydrographic Office.

Land Information New Zealand
NI 85/2008

NZ 163/08 NEW ZEALAND – North Island – East Coast – Auckland Harbour – Sector Light, Beacon, Buoy.

Chart NZ 532 [Apr 08]

Insert  Q(5)Y.20s 36° 51'.70S., 175° 08'.30E.
 Y

Chart NZ 533 [42/08]

Insert  Q(5)Y.20s 36° 51'.70S., 175° 08'.30E.
 Y

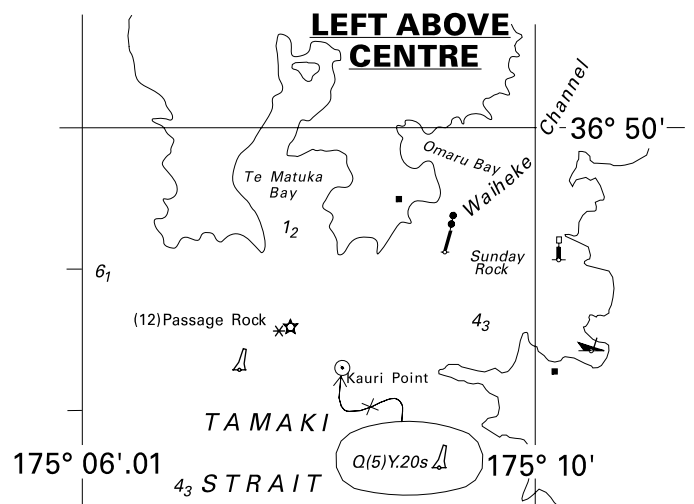
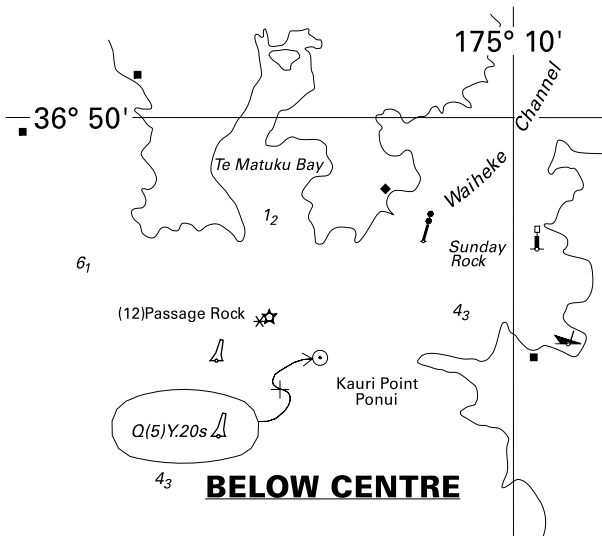
Chart NZ 5324 [127/08]

Insert legend, RW 36° 49'.49S., 174° 50'.50E.

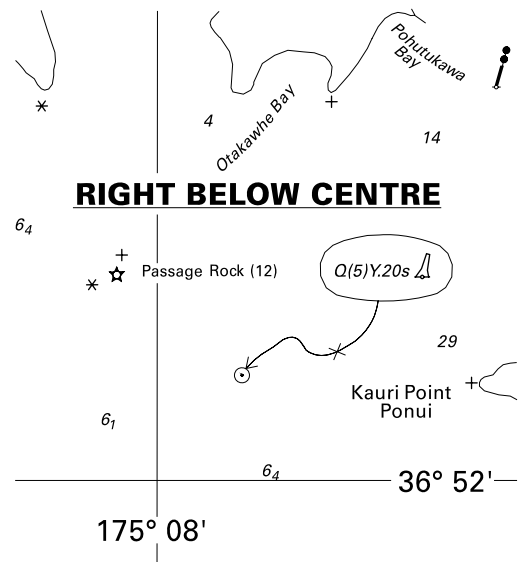
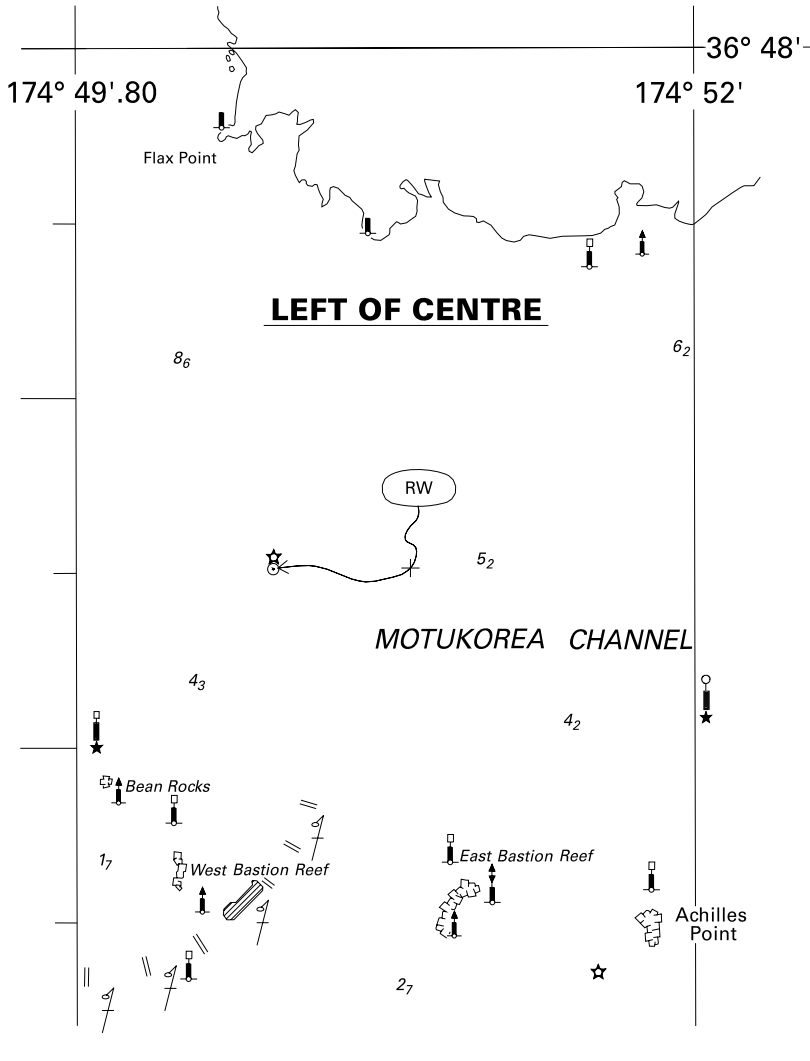
Insert  Q(5)Y.20s 36° 51'.70S., 175° 08'.30E.
 Y

Delete obscured sector, at light 36° 50'.00S., 174° 49'.87E.

Land Information New Zealand
 NI 165/2008




<i>Issued as a guide to chart correction. Use in conjunction with the appropriate NZ Notice to Mariners.</i>			<i>Issued as a guide to chart correction. Use in conjunction with the appropriate NZ Notice to Mariners.</i>		
LAST CORRECTION	NZ NTM No.	CHART No.	LAST CORRECTION	NZ NTM No.	CHART No.
NE Apr 08	NZ 163/08	NZ 532	NZ 42/08	NZ 163/08	NZ 533



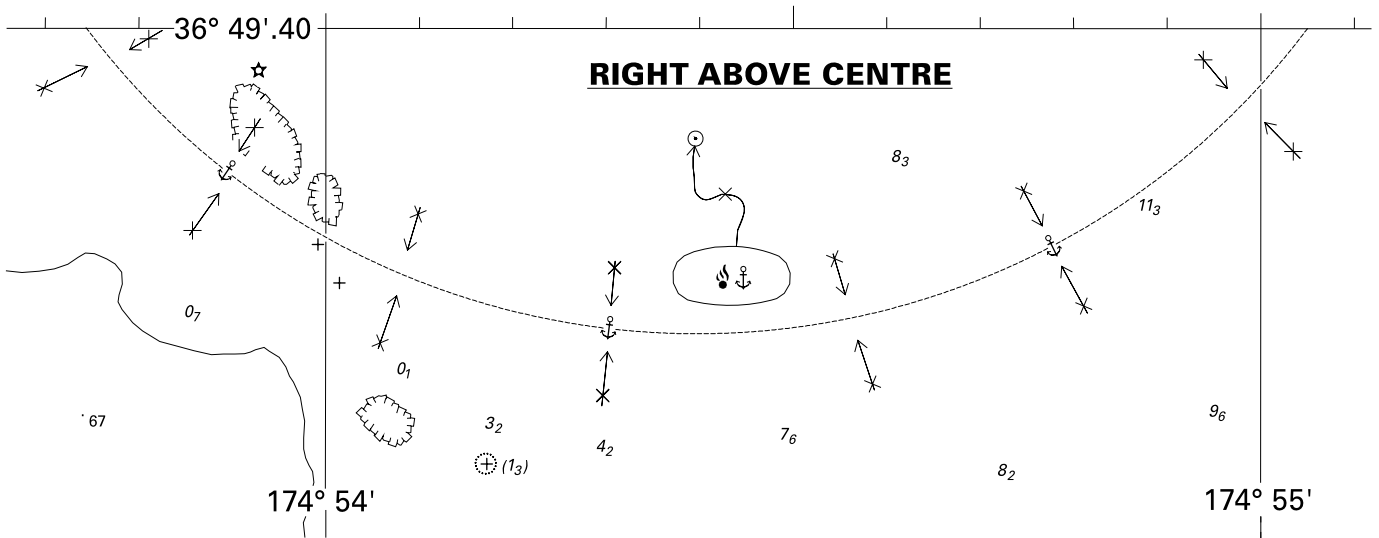
<i>Issued as a guide to chart correction.</i>		<i>Use in conjunction with the appropriate NZ Notice to Mariners.</i>	
LAST CORRECTION	NZ NTM No.	CHART No.	
NZ 127/08	NZ 163/08	NZ 5324	

NZ 164/08 NEW ZEALAND – North Island – East Coast – Tamaki Strait – Sector Light and Explosive Anchorage.

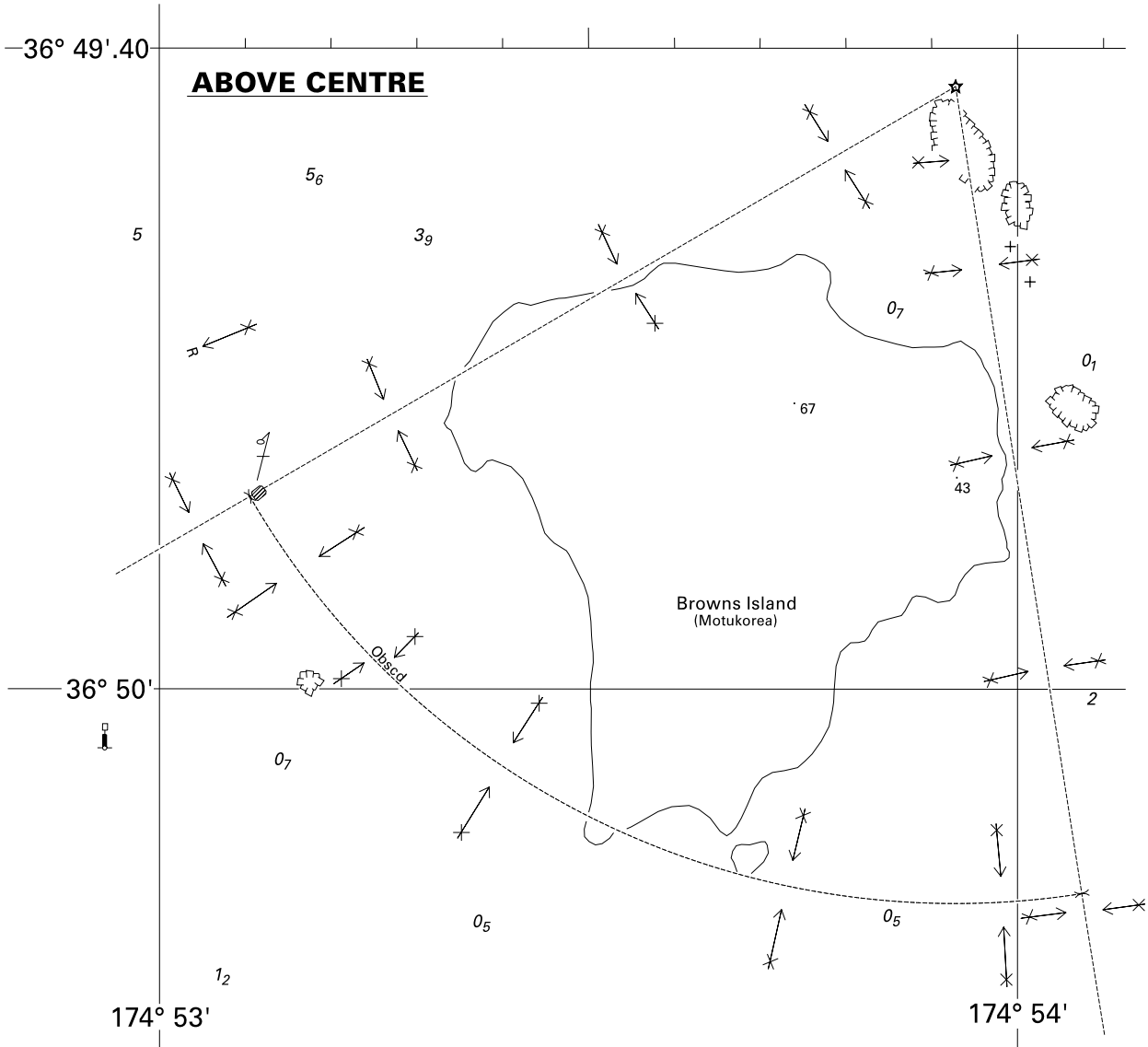
Chart NZ 5325 [127/08]

Insert	Explosive anchorage, joining:	36° 49'.40S. 174° 55'.05E.	
		36° 49'.53S. 174° 54'.89E.	
		36° 49'.65S. 174° 54'.57E.	
		36° 49'.66S. 174° 54'.41E.	
		36° 49'.63S. 174° 54'.15E.	
		36° 49'.58S. 174° 54'.00E.	
		36° 49'.48S. 174° 53'.83E.	
		36° 49'.40S. 174° 53'.74E.	
			36° 49'.49S. 174° 54'.39E.
		Amend	sectors at light, FI.WR.4s10m6/4M, as follows: R 287° - 351° (64°) Obscd 060° - 351° (69°) R 060° - 082° (22°) Remaining sectors unchanged.

Land Information New Zealand
 NZ Light List K3847
 NI 150/2008



<i>Issued as a guide to chart correction.</i>		<i>Use in conjunction with the appropriate NZ Notice to Mariners.</i>	
LAST CORRECTION	NZ NTM No.	CHART No.	
NZ 127/08	NZ 164/08	NZ 5325	



<i>Issued as a guide to chart correction.</i>		<i>Use in conjunction with the appropriate NZ Notice to Mariners.</i>	
LAST CORRECTION	NZ NTM No.	CHART No.	
NZ 127/08	NZ 164/08	NZ 5325	

NZ 165(T)/08 NEW ZEALAND – North Island – East Coast – Tairua Harbour – Current Meter Recovered.

Former notice – NZ 151(T)/08 is cancelled.

Cancel this notice on receipt.

Chart formerly affected – NZ 534

NIWA

NI 167/2008

NZ 166(T)/08 NEW ZEALAND – North Island – West Coast – Manukau Harbour Entrance – South West Channel – Depths.

Former Notice – NZ 84(T)/08 is cancelled.

South West Channel

1. A recent survey (August 2008) indicates that the deepest water was found to lie within a sector bearing Ninepin Rock Lt. 060° - 064° True. Within this sector a least depth of 6.6m below CD can be expected.
2. All vessels should contact the Signalman at South Head. Phone (09) 235-1013, for the latest conditions.
3. Mariners should be aware that depths in the approaches to Manukau Harbour and across the bar are constantly changing.

Chart temporarily affected – NZ 4314

Ports of Auckland Ltd
NI 169/2008

**NZ 167(T)/08 NEW ZEALAND – South Island – East Coast – Banks Peninsula – Lyttelton Harbour –
Dredging Operations.**

1. Dredging operations are underway in the Lyttelton Harbour main navigation channel until 15th September 2008.
2. The dredger *New Era* will operate between 0600 and 1800 daily and is restricted in its ability to manoeuvre.
3. All vessels are advised to keep clear of operations and to give the dredger a wide berth.
4. The dredger will maintain a listening watch on VHF Channel 12 or 16.

Charts temporarily affected – NZ 632 – NZ 6321

Lyttelton Port of Christchurch
NI 170/2008

NZ 168(T)/08 NEW ZEALAND – South Island – East Coast – Timaru Harbour – Shoaling.

Former notice – NZ 161(T)/08 is cancelled.

1. Due to recent storm conditions, shoaling has occurred in the Inner Channel, NW of the Eastern Extension Mole. A recent survey (3 August 2008) indicates a least depth of 9.3m below Chart Datum in position 44° 23'.09S., 171° 15'.93E.
2. Mariners are advised to contact Timaru Harbour Radio on VHF Channel 16 for latest information.

Chart temporarily affected – NZ 6422

Port Timaru
NI 171/2008

III

CORRECTIONS TO NEW ZEALAND LIGHT LIST

(NZ NTM Edition No.17 dated 15 August 2008)

NEW ZEALAND NAUTICAL ALMANAC 2008/09 LIGHT LIST SECTION

3847	Browns Island. Off N side	36 49.44 174 53.94	Fl WR 4s	10	W6 R4	Yellow metal tripod tower	<i>fl 1.</i> R 060°-082° (22°), W 082°-096° (14°), R 096°-217° (121°), W 217°-222° (5°), R 222°-274° (52°), W 274°-287° (13°), R 287°-351° (64°), Obscd 351°-060° (69°), Ra refl
-------------	------------------------------	-----------------------	----------	----	----------	------------------------------	-------------------------------------------------------------------------------------------------------------------------------------------------------------------------------------------------------------

*

(NI 150/2008)

IV

CORRECTIONS TO PUBLICATIONS

(NZ NTM Edition No.17 dated 15 August 2008)

Nil

V

NAVIGATIONAL WARNINGS

Navarea XIV warnings in force 13 August 2008

NAVAREA XIV

(South West Pacific)

017/08 RADIO SERVICES

Reports have been verified that some Saab R3-AIS transponders, when combined with an older GPS receiver, have stopped working while GPS satellite PRN32 is in view. Vessels affected are reported being 'invisible' to other AIS equipped vessels in addition to some AIS equipped Shore Stations. It has been reported vessels equipped with the Saab R3-AIS transponders continue to receive AIS information from other AIS equipped vessels. All vessels are advised to check the proper operation of their AIS and GPS equipment.

053/08 SOUTH PACIFIC OCEAN. FIJI, BEKANA ISLAND, LAUTOKA HARBOUR. WRECK.
INT CHART 638

1. Wreck reported in position 17 35.42S., 177 26.69E. Least depth observed over the wreck is 6.3 metres above Chart Datum.
2. Vessels are advised to navigate with extreme caution in the vicinity.

066/08 SOUTH PACIFIC OCEAN. FIJI, SUVA HARBOUR. SUNKEN HULKS. BA 1660

1. Wrecks reported in the following positions pose a danger to surface navigation

<u>Name of vessel</u>	<u>Position</u>
FV South Star	18 08.55S., 178 24.88E.
MV Degei II	18 07.45S., 178 25.42E.

2. Vessels are advised to navigate with extreme caution in the vicinity.
-

VI

CORRECTIONS TO ADMIRALTY LIST OF RADIO SIGNALS

(NZ NTM Edition No.17 dated 15 August 2008)

Nil
