

NEW ZEALAND NOTICES TO MARINERS

Notices

NZ 128 – 138

© Crown Copyright 2010. All rights Reserved. Permission is not required to make analogue copies of these Notices but such copies are not to be sold.

CONTENTS

- I [Explanatory Notes.](#)
 - II [New Zealand Notices to Mariners.](#)
 - III [Corrections to New Zealand Light List.](#)
 - IV [Corrections to Sailing Directions and New Zealand Publications.](#)
 - V [Navigational Warnings. \(NAVAREA XIV\)](#)
 - VI [Corrections to Admiralty List of Radio Signals.](#)
-

New Zealand Notices to Mariners are the authority for correcting New Zealand charts within the New Zealand area of charting responsibility as shown in Notice No. 1.

Mariners are requested to immediately inform Land Information New Zealand, PO Box 5501 Lambton Quay, Wellington 6145, New Zealand Phone : 0800 665 463 or (04) 460-0110 Fax: (04) 460-0161 or e-mail: info@linz.govt.nz, of the discovery of new or suspected dangers to navigation, or shortcomings in charts and publications. A copy of a Hydrographic Note, a convenient form on which to send such information, is included at the end of Section VI of the Fortnightly Notices to Mariners.

Changes or defects in aids to navigation should be reported to the Rescue Coordination Centre New Zealand (RCCNZ) via the nearest New Zealand Coastal Maritime Radio Station Phone : (04) 577-8030 Fax : (04) 577-8038 or (04) 577-8041 e-mail: rccnz@maritimenz.govt.nz.

Copies of these Notices can be obtained from Land Information New Zealand, Maritime New Zealand, Principal Chart Agents at the major ports of New Zealand and the Internet: www.linz.govt.nz

EXPLANATORY NOTES

Charts. The notices in Section II give instructions for the correction of charts. Geographical positions refer to the largest scale chart unless otherwise stated. They are normally given in degrees, minutes and decimals of a minute, but may occasionally quote seconds for convenience when plotting from the graduation of some older-style charts. Bearings are true reckoned clockwise from 000° to 359°; those relating to lights are given as seen by an observer from seaward. Symbols referred are those shown in publication Chart 5011 (*INT 1*) Symbols and Abbreviations used on Admiralty Charts, published by the United Kingdom Hydrographic Office.

Alterations to depth contours, deletion of depths to make way for new detail, etc. are not mentioned unless they have some navigational significance.

Blocks or notes accompanying notices in Section II are placed after Section VI.

Temporary and Preliminary Notices. These are indicated by (T) or (P) after the notice number. A list of (T) and (P) Notices in force is published in the fortnightly Editions of Notices to Mariners. Charts are not corrected for them before issue; they should be corrected in pencil on receipt.

Light Lists. The detailed correction to the Light List is given in Section III and may not be published in the same edition as the chart correcting notice. The entire entry for each light is printed, and an asterisk (*) is shown under the column which contains an amendment. In the case of a new light, an asterisk (*) appears under all the columns. New and extensively altered entries are intended to be pasted in. It is recommended that a manuscript entry be made for all shorter corrections.

It is emphasized that the List of Lights is the authority for lights and that many alterations, especially those of a temporary but operational nature, may only be promulgated as corrections to the List of Lights.

Radio Signals. When radio signals are affected by a notice the Admiralty List of Radio Signals reference number is quoted. The detailed correction to the List of Radio Signals is given in Section VI and may be published in a later edition than the chart correcting notice.

Sailing Directions. Corrections to Sailing Directions are given in Section IV. It is recommended that such corrections be kept together in a file with the latest list of those in force on top. The file can then be consulted when using the parent book to see if any notices affecting the area under consideration are extant.

Corrections should not be pasted into the parent book or Supplement as corrections may be issued between closing date and issue of a new Supplement. These will be embodied in the text of the following Supplement. A summary of corrections in force will be issued in Section IV of the Fortnightly Edition at monthly intervals.

New Zealand Publications. Corrections to New Zealand Publications are given in Section IV.

Correction of Charts and Publications by the User. New Zealand Notices to Mariners contain important information and should be used to keep the specified charts and books up to date.

THE USE OF CHARTS AND ASSOCIATED PUBLICATIONS

Reliance on Charts and Associated Publications. While every effort is made to ensure the accuracy of the information on New Zealand charts and other publications, it should be appreciated that it may not always be complete and up to date. The mariner must be the final judge of the reliance to be placed on the information given, bearing in mind their particular circumstances, local pilotage guidance and the judicious use of available navigational aids.

Charts. Charts should be used with prudence: there are areas where the source data are old, incomplete or of poor quality. The mariner should use the largest scale appropriate for his particular purpose; apart from being the most detailed, the larger scales are usually corrected first. When extensive new information (such as a new hydrographic survey) is received, some months may elapse before it can be fully incorporated in published charts. On small scale charts of ocean areas where hydrographic information is, in many cases, still sparse, charted shoals may be in error as regards position, least depth and extent. Undiscovered dangers may exist, particularly away from well-established routes.

Further guidance. The Mariner's Handbook (NP 100) gives a fuller explanation of the limitations of charts. All users should study it in their own interest.

II

NUMERICAL INDEX OF CHARTS AFFECTED
(NZ NTM Edition No.15 dated 23 July 2010)

NZ Chart No.	NZ Notices	INT Chart No.	Notices
NZ 43 NZ 61 NZ 443 NZ 463 NZ 534 NZ 661 NZ 4421 NZ 4432 NZ 4633 NZ 5113 NZ 6154 NZ 6612	NZ 130 NZ 135(T) NZ 129, 130 NZ 133(P) NZ 137(T) NZ 138(P) NZ 134(P) NZ 130 NZ 133(P) NZ 132(P) NZ 136(T) NZ 138(P)		
ENC Cell	Notices		
NZ300463 NZ300661 NZ404633 NZ406422 NZ506612 NZ506422	NZ 133(P) NZ 138(P) NZ 133(P) NZ 128 NZ 138(P) NZ 128		

NEW ZEALAND TEMPORARY AND PRELIMINARY NOTICES IN FORCE

(NZ NTM Edition No. 15 dated 23 July 2010)

NZ Notice	T/P	Charts Affected	Locality and Subject
		NZ Chart, INT Chart, ENC Cell	
133/01	T	NZ 6612	Otago Hr.: Shoaling
129/04	T	NZ 52, 53, 522, 5227	Hauraki Gulf: Dredging Operations
194/04	P	NZ 46, 48, 61, 463, 614, 6151, 6152, 6153, 6154	Marlborough Sounds: Use of Automated Navigation Systems
110/05	T	NZ 8248, T 8248	Tonga: Light Unlit
161/05	P	NZ 4633, 4634	Wellington Hr.: Navigation Safety Bylaw
173/05	T	NZ 53, 54, 531, 534, 5318	Whitianga Hr.: Sandbar
176/06	T	NZ 23, 26, 56, 14060, 14600, INT 60, 600, 640	N. Island, E. Coast: Scientific Instruments
177/06	T		Indian Ocean: Operation 'Enduring Freedom'
205/06	T	NZ 532, 5324	Tamaki Strait: Motuihe Is.: E. Cardinal Lt Beacon
244/06	T	NZ 23, 25, 63, 64, INT 640, 648	Lyttelton Hr.: Waverider Buoy
37/07	T	NZ 53, 532, 533, 5327	Firth of Thames: Moorings, Research Instruments
63/07	T	NZ 4633	Wellington Hr.: Race Marker Buoys
219/07	P	NZ 54, 542	Bay of Plenty, Opotiki: Fish Haven
91/08	P	NZ 4424	W. Coast, Taharoa Hr.: Hr. Limits
131/08	T	NZ 68, 69, 681	Foveaux Strait, Ruapuke Is.: Seabed Obstruction
132/08	T	NZ 14051, 14052, 14060, 14061, 14604, 14605, 14606, 14607, 14629, INT 51, 52, 60, 61, 604, 605, 606, 607, 629	North, South Pacific Ocean: ATLAS Buoys
243/08	P	NZ 5612	Napier Hr.: New Wharf Development
244/08	P	NZ 632, 6321	Banks Peninsula: Mussel Farms
259/08	T	NZ 5225	Great Barrier Island: Marine Farm
262/08	T	NZ 2411	Snares Islands/Tini Heke: Seabed Obstruction
118/09	T	NZ 8275, T 8275	Tonga, Nuku'alofa Hr.: Light
139/09	T	NZ 845, 14630, 14631, INT 630, 631	Nuie Is: Lights
143/09	T	NZ 5322, 5323, NZ505322	Auckland Hr.: Vertical Clearance
184/09	T	NZ 614, 6144	Motueka River: Current Meter
195/09	T	NZ 6321	Sumner Head: Buoy
202/09	T	NZ 53, 532, 5322, 5324, 5325, NZ305322, 405324, 505322, 505325	Rangitoto Channel: Light
215/09	T	NZ 63, 64	Lyttelton Hr.: Works in Progress
219/09	T	NZ 5125	Bay of Islands: Scientific Moorings
242/09	P	NZ 42, 4265	Kaipara Hr. Entrance: Depths
28/10	T	NZ 5321, 5322, NZ405321, 505322	Auckland Hr. Approaches: Light
45/10	T	NZ 55, NZ300055	Poverty Bay: Scientific Moorings
63/10	T	NZ 53, 532, 533, 5327, NZ300053, 305321	Firth of Thames: Scientific Buoy
72/10	P	NZ 72	Hokitika: Seabed Obstruction
84/10	P	NZ 6153, NZ406153	Picton Hr.: Light
93/10	P	NZ 5214, 5215, 5219, NZ505214, 505215	Whangarei Hr: Lights, Beacons
94/10	T	NZ 53, 532, 5324, 5327, NZ305321, 405324	Waiheke Channel: Light
102/10	T	NZ 4314, NZ404314	Manukau Hr.: Depths
110/10	T	NZ 21, 23, 25, 42, 43, 48, 14600, 14601, 14605, INT 600, 601, 605, 640, 641, 648, NZ200023, 200025	Cape Egmont W.: Seismic Survey
111/10	T	NZ 6422	Approaches to Timaru: Light Buoy
112/10	T	NZ 7142	Greymouth Hr.: Depths
117/10	T	NZ 56, 561, 5612, NZ300056, 400561, 505612, 605612	Napier Hr.: Lights
119/10	T	NZ 23, 25, 45, 48, 443, INT 640, 648, NZ200023, 200025, 300443	Cape Egmont W.: Drilling Operations
124/10	T	NZ 4314, 4315, NZ404314, 504315	Manukau Hr.: Light Beacons, Buoys
125/10	T	NZ 82, 827, 8275, 8277, T 82, 827, 8275, 8277	Tonga, Nuku'alofa Hr.: Aids to Navigation
126/10	P	NZ 865, 8655	Samoa, Apia: Buoys
131/10	T		Maritime Safety Broadcasts
132/10	P	NZ 5113	Rangaunu Hr.: Lights, Beacons, Buoys
133/10	P	NZ 463, 4633, NZ300463, 404633	Wellington Hr.: Light
134/10	P	NZ 4421	Raglan Hr.: Lights
135/10	T	NZ 61	Golden Bay: Scientific Instruments
137/10	T	NZ 534	Tairua Hr: Scientific Instruments
138/10	P	NZ 661, 6612, NZ300661, 506612	Otago Hr.: Light

NZ 128/10 NEW ZEALAND PUBLICATIONS – Electronic Navigational Charts.

New ENC's to be published shortly

<i>ENC Cell</i>	<i>Title</i>
NZ406422	NZ406422 - NZ6422 - South Island - East Coast - Approaches to Timaru
NZ506422	NZ506422 - NZ6422 - South Island - East Coast - Timaru Harbour

Land Information New Zealand
NI 154/2010

NZ 129/10 NEW ZEALAND PUBLICATIONS – Paper Charts.

(1) New Edition Published.

<i>Chart</i>	<i>Published</i>	<i>Title and other remarks</i>	<i>Scale 1:</i>	<i>Page of 14th. Edition NZ 202 12 & 13</i>
NZ 443	May 10	Approaches to Port Taranaki <i>This limited new edition includes general updating throughout.</i> 38° 23'.00S - 39° 43'.00S 173° 15'.00E - 174° 21'.00E	150 000	

(2) Chart Permanently Withdrawn.

<i>Chart</i>	<i>On Publication of New Chart/New Edition</i>	<i>Date</i>
NZ 443	NZ 443	May 10

Land Information New Zealand
 NI 153/2010

NZ 130/10 NEW ZEALAND – North Island – West Coast – Port Taranaki – Pilot Boarding Station.

Chart NZ 43 [43/09]

Move  from: 39° 01'.4S., 174° 02'.1E.
 to: 39° 00'.5S., 174° 02'.5E.

Chart NZ 443 [NE May 2010]

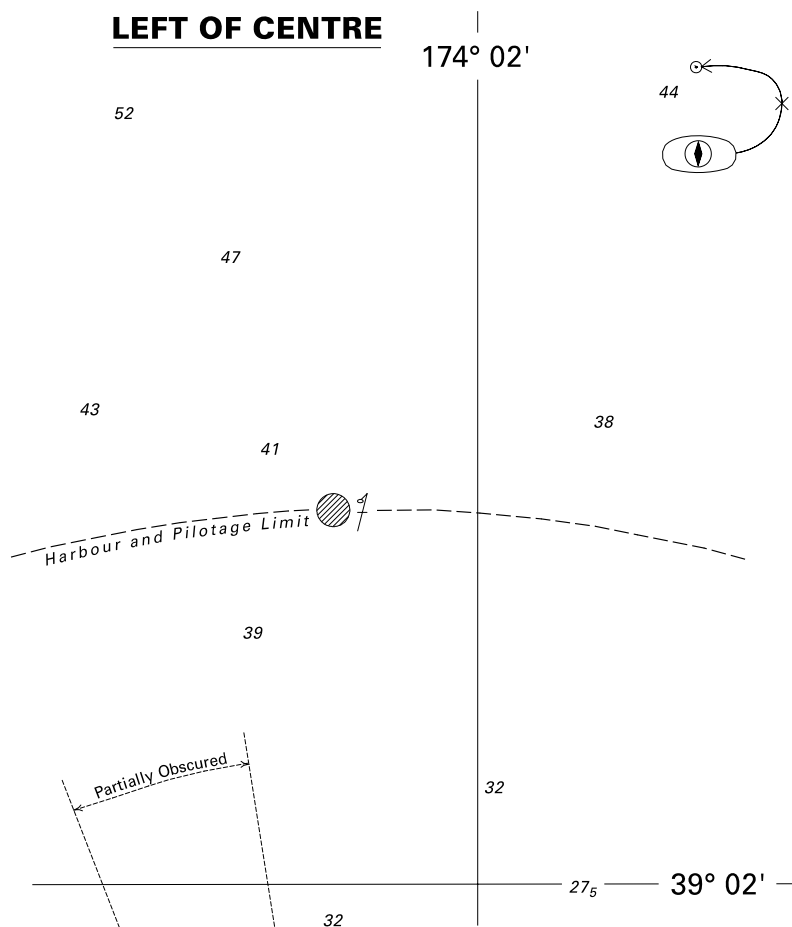
Move  from: 39° 01'.36S., 174° 01'.93E.
 to: 39° 00'.54S., 174° 02'.50E.

Chart NZ 4432 [67/09]

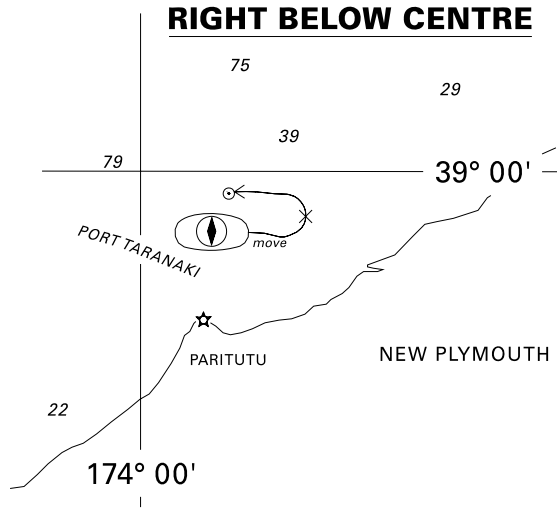
Insert  39° 00'.54S., 174° 02'.50E.

Delete  39° 01'.34S., 174° 01'.67E.

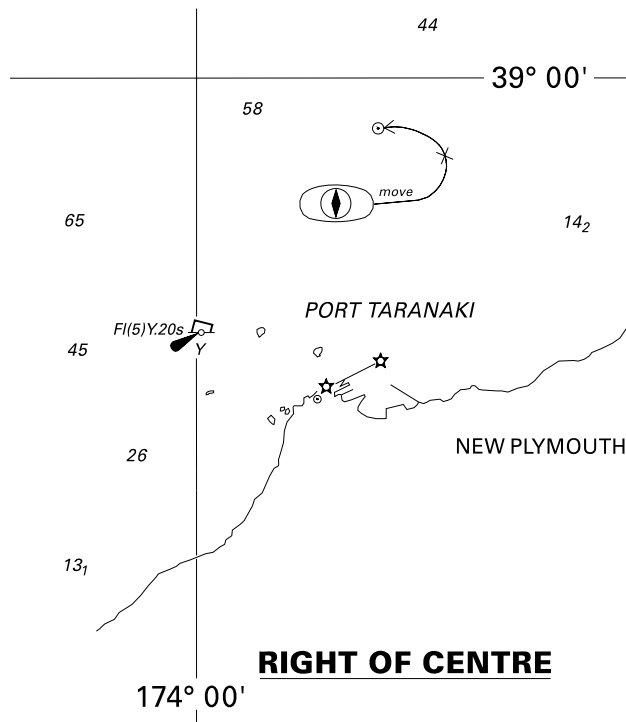
Port Taranaki Ltd
 NI 145/2010



<i>Issued as a guide to chart correction.</i>		<i>Use in conjunction with the appropriate NZ Notice to Mariners.</i>	
LAST CORRECTION	NZ NTM No.	CHART No.	
NZ 67/09	NZ 130/10	NZ 4432	



<i>Issued as a guide to chart correction.</i>		<i>Use in conjunction with the appropriate NZ Notice to Mariners.</i>	
LAST CORRECTION	NZ NTM No.	CHART No.	
NZ 43/09	NZ 130/10	NZ 43	



<i>Issued as a guide to chart correction.</i>		<i>Use in conjunction with the appropriate NZ Notice to Mariners.</i>	
LAST CORRECTION	NZ NTM No.	CHART No.	
NE May 2010	NZ 130/10	NZ 443	

NZ 131(T)/10 SOUTH WEST PACIFIC – Maritime Safety Broadcasts.

Former notice – NZ 82(T)/10 is cancelled.

Optimum R/T frequencies within NAVAREA XIV

The accompanying diagrams show the optimum R/T calling and working frequency bands and times for navigational warnings broadcast within 1000 nautical miles of Taupo Maritime Radio (ZLM) (38° 50'S., 176° 00'E. approx.) for the period August to October 2010.

Australian Government IPS Radio and Space Services
NI 144/2010

**NZ 132(P)/10 NEW ZEALAND – North Island – East Coast – Rangaunu Harbour – Research Instruments
 – Lights, Beacons and Buoys.**

Former notice – NZ 90(P)/10 is cancelled.

1. Significant changes to navigational aids have been made in Rangaunu Harbour.

2. Lights have been amended as follows:

<i>Name</i>	<i>Characteristics</i>	<i>Position</i>	<i>Remark</i>
Omere, Janus or Toby Rock	Fl(2)R.6s5m5M	34° 52'.79S., 173° 16'.92E	
Wairaka Point	Fl.R.2.5s3m2M	34° 54'.08S., 173° 18'.08E	Red □ topmark
* Mangatete	Fl.G.2s2m2M	34° 56'.98S., 173° 16'.25E	
* Rat Island	Q.G.2m2M	34° 57'.56S., 173° 15'.25E	
* Mangrove Island	Q.G.2m2M	34° 58'.38S., 173° 15'.08E	
* Junction Reach	Q.R.2m2M	34° 58'.89S., 173° 14'.61E	

3. The following lights have been installed:

<i>Name</i>	<i>Characteristics</i>	<i>Position</i>	<i>Remark</i>
Sheigis Rock	Fl.R.3s1m2M	34° 53'.43S., 173° 17'.67E	Red □ topmark
* J4	Q.R.2m2M	34° 58'.99S., 173° 14'.65E	
* J16	Q.R.2m2M	34° 59'.37S., 173° 15'.42E	
* J18	Q.R.2m2M	34° 59'.57S., 173° 15'.42E	
* J20	Q.R.2m2M	34° 59'.75S., 173° 15'.34E	
* A1	Q.G.2m2M	34° 59'.99S., 173° 15'.09E	
* A5	Q.G.2m2M	35° 00'.08S., 173° 15'.10E	

4. The following lit buoys have been installed:

<i>Name</i>	<i>Characteristics</i>	<i>Position</i>	<i>Type</i>
Walker Island	Fl.G.3s2M	34° 54'.64S., 173° 17'.69E	Starboard lateral buoy
A2	Fl.R.3s2M	34° 56'.26S., 173° 16'.98E	Port lateral buoy
A4	Fl.R.3s2M	34° 57'.42S., 173° 15'.64E	Port lateral buoy
Home Creek	Fl.G.2.5s2M	34° 57'.89S., 173° 15'.24E	Starboard lateral buoy
Junction Buoy	Q.R.2m2M	34° 59'.35S., 173° 14'.95E	Port lateral buoy
Prices Buoy	Q.G.2m2M	34° 59'.33S., 173° 15'.29E	Starboard lateral buoy
Houhora Buoy	Q.R.2m2M	34° 49'.32S., 173° 07'.78E	Port lateral buoy

5. The following light has been removed:

<i>Name</i>	<i>Characteristics</i>	<i>Position</i>
Rangaunu Harbour, Rear Leading Light	Fl.3s10m5M	34° 54'.37S., 173° 18'.40E

6. The following unlit beacons have been removed:

<i>Name</i>	<i>Position</i>	<i>Type</i>
* J6	34° 59'.10S., 173° 14'.76E	Port Lateral
* J8	34° 59'.21S., 173° 14'.85E	Port Lateral
* J10	34° 59'.32S., 173° 14'.97E	Port Lateral
* J12	34° 59'.33S., 173° 15'.13E	Port Lateral

* Indicates new or revised entry

7. Charting action will be taken in due course.

Chart affected – NZ 5113

Northland Regional Council
NI 147/2010

NZ 133(P)/10 NEW ZEALAND – North Island – South Coast – Wellington Harbour – Light.

1. The following light has been amended:

<i>Name</i>	<i>Characteristics</i>	<i>Position</i>	<i>Remark</i>
Matiu/Somes Island, S side	L Fl.10s.29m7M	41° 15'.58S., 174° 51'.82E	W 314° - 107° (153°)

2. Charting action will be taken in due course.

Charts affected – NZ 463 – NZ 4633 – NZ300463 – NZ404633

Greater Wellington Regional Council
NZ Light List K4014
NI 152/2010

NZ 134(P)/10 NEW ZEALAND – North Island – West Coast – Raglan Harbour – Lights.

1. The following light has been amended:

<i>Name</i>	<i>Characteristics</i>	<i>Position</i>
Putoetoe Point, Rear Ldg Lts	Dir F.WRG.26m 22/20M	37° 48'.05S., 174° 52'.40E

2. The following light has been installed:

<i>Name</i>	<i>Characteristics</i>	<i>Position</i>
-	F.R.3m1M	37° 47'.94S., 174° 51'.97E

3. Charting action will be taken in due course.

Chart affected – NZ 4421

Waikato District Council
NZ Light List K4104.05, 4104.2
NI 146/2010

NZ 135(T)/10 NEW ZEALAND – South Island – North Coast – Golden Bay – Scientific Instruments.

1. A scientific seabed mooring has been deployed until August 2011, adjacent to the yellow meteorological buoy, *F(5)Y.20s* in position 40° 41'.07S., 172° 55'.38E.
2. Mariners engaged in seabed trawling activities are requested to remain 0.25NM clear of the above location.

Chart temporarily affected – NZ 61

NIWA
NI 156/2010

NZ 136(T)/10 NEW ZEALAND – South Island – North Coast – Picton Harbour – Shoal Depth.

Former notice – NZ 180(T)/03 is cancelled.

Cancel this notice on receipt.

Chart formerly affected – NZ 6154

Port Marlborough Ltd
NI 143/2010

NZ 137(T)/10 NEW ZEALAND – North Island – East Coast – Tairua Harbour – Scientific Instruments.

1. From the 26th July scientific seabed moorings will be deployed in the following locations until September 2010:
 - a. 37° 01'.00S., 175° 54'.00E.
 - b. 36° 59'.00S., 175° 52'.60E.
2. Mariners engaged in seabed trawling activities are requested to remain 0.5NM clear of the above locations.

Chart temporarily affected – NZ 534

University of Waikato
NI 155/2010

NZ 138(P)/10 NEW ZEALAND – South Island – East Coast – Otago Harbour – Light.

1. The following light has been amended:

<i>Name</i>	<i>Characteristics</i>	<i>Position</i>	<i>Remark</i>
Harington Point	Oc.R.10s2M & F.Y.4M	45° 47'.00S., 170° 43'.39E	Y 177° - 182° (5°)

2. Charting action will be taken in due course.

Charts affected – NZ 661 – NZ 6612 – NZ300661 – NZ506612

Port Otago Ltd
NZ Light List K4367.1
NI 142/2010

III

CORRECTIONS TO NEW ZEALAND LIGHT LIST (NZ NTM Edition No.15 dated 23 July 2010)

NEW ZEALAND NAUTICAL ALMANAC 2010/11 LIGHT LIST SECTION

Nil

IV

CORRECTIONS TO PUBLICATIONS (NZ NTM Edition No.15 dated 23 July 2010)

New Zealand Chart Catalogue 14th Edition, NZ 202

Page /Chart No.

Page 13

NORTH ISLAND

NZ 443

Amend New Edition date to 5/2010

(NI 153/2010)

New Zealand Nautical Almanac (NZ 204), 2010/11 Edition

Page 254, HARBOUR MASTERS, contact details.

Delete and replace with:

TAURANGA	Bay of Plenty Regional Council 6 Rata Street, Mount Maunganui 3116 PO Box 364, Whakatane 3158 harbourmaster@envbop.govt.nz Duty Officer - 24 hrs:	+64 7 928 3384	+64 7 928 3328	(021) 976 178
		+64 7 928 3385		
WHAKATANE	Bay of Plenty Regional Council 5 Quay Street, PO Box 364, Whakatane 3158	+64 7 308 8570	+64 7 308 8592	(029) 368 9415 (24 hours)

(NI 157/2010)

IV

NP60 Pacific Islands Pilot Volume 1 (2007 Edition)

Papua New Guinea - North-East coast - Lapar Point to Cape Concordia — Directions; light

334

After Paragraph 8.248 1 line 5 Add:

- 2 **Major light:**
Oinake Light (white structure) (2°36'4S
141°00'1E).
Indonesian Notice 19/187/2010
(SDDs 2010000 100663; 106523) [29/10]

(NI 151/2010)

(BA Wk 29/10)

V

NAVIGATIONAL WARNINGS

Navarea XIV warnings in force 21 July 2010

NAVAREA XIV

(South West Pacific)

007/10 USE OF ECDIS.

Mariners are advised that ECDIS may not display some isolated shoal depths when operating in "base or standard display" mode. Route planning and monitoring alarms for these shoal depths may not always be activated. To ensure safe navigation and to confirm that a planned route is clear of such dangers, mariners should visually inspect the planned route and any deviations from it using ECDIS configured to display "all data". The automated voyage planning check function should not be solely relied upon. The International Hydrographic Organization (IHO) is leading technical action to resolve this matter. Further information will be made available through notices to mariners.

018/10 SOUTH PACIFIC OCEAN. FIJI, VITI LEVU. LIGHT UNLIT.
CHART BA 1670, NZ 14638, INT 638

1. Cancel NAVAREA XIV 014/2010.
2. Fiji Coastal Navigational Warning 22/2010 refers.
3. The following light is unlit:
Navula Point K4706 17-53.2S, 177-14.9E

019/10 SOUTH PACIFIC OCEAN. KINGDOM OF TONGA. AIDS TO NAVIGATION
CHART NZ8277 (T8277), NZ8275 (T8275), NZ827 (T827), NZ82 (T82), NZ14631 (INT631),
NZ14638 (INT638)

1. Due to cyclone aftermath all aids to navigation in the approaches to the port of Nuku'alofa, and in the port of Nuku'Alofa are damaged and unlit or unreliable.
-

VI

CORRECTIONS TO ADMIRALTY LIST OF RADIO SIGNALS
(NZ NTM Edition No.15 dated 23 July 2010)

Nil



HYDROGRAPHIC NOTE

(For instructions, see next page)

LINZ Hydrographic Services
National Office
PO Box 5501
Lambton Quay
Wellington 6145
New Zealand

Tel: 0800 665 463
Fax : +64 4 460 0161
Email: info@linz.govt.nz

Date Ref.No.

Name and address of ship or sender

.....
.....

Tel/Fax/Telex/Email of sender

General locality

Subject

Position. Lat. Long.....

Position fixing system used

Datum

Charts affected Edition.....

Dated

Latest Notice to Mariners held.....

Publications affected (Edition No. and date of latest supplement, page no, ID no. etc)

Details:

A replacement copy of Chart No.
is required (see Instruction 4).

Signature of observer/reporter.....

HYDROGRAPHIC NOTE

Forwarding Information for Charts and Hydrographic Publications

Note: An acknowledgement of receipt will be sent and the information then used to the best advantage, which may mean immediate action or inclusion in a revision in due course. When a Notices to Mariners is issued, the sender's ship or name is quoted as authority unless (as sometimes happens) the information is also received in a foreign Notices to Mariners. An explanation of the use of contributions from all parts of the world would be too greater task and a further communication should only be expected when the information is of outstanding value or has unusual features.

INSTRUCTIONS:

1. Mariners are requested to notify LINZ Hydrographic Services, National Office, Land Information New Zealand, PO Box 5501, Lambton Quay, Wellington 6145, New Zealand, when new or suspected dangers to navigation are discovered, changes observed in aids to navigation, or corrections to publications seem to be necessary. The Admiralty publication, *The Mariner's Handbook* (NP 100), "Chapter 4", gives general instructions.
2. This form and its instructions have been designed to help both the sender and the recipient. It should be used, or followed, closely, whenever appropriate. Copies of this form may be obtained gratis from LINZ Hydrographic Services at the address above, or in PDF format directly from the LINZ website at www.linz.govt.nz.
3. When a position is defined by sextant angles or bearings (true or magnetic being specified) more than two should be used in order to provide a check. Distances observed by radar should be quoted. However, when there is a series of fixes along a ship's course, only the method of fixing and the objects used need to be indicated. Latitude and longitude should only be used specifically to position the details when they have been fixed by astronomical observations or GPS and a full description of the method, equipment and datum used should be given.
4. A cutting from the largest scale paper chart is the best medium for forwarding details, the alterations and additions being shown thereon in red. When requested, a new copy will be sent in replacement of a chart that has been used to forward information, or when extensive observations have involved defacement of the observer's chart. If it is preferred to show the amendments on a tracing of the largest scale chart (rather than the chart itself) these should be in red as above, but adequate detail from the chart must be traced in black ink to enable the amendments to be fitted correctly.
5. When soundings are obtained, *The Mariners Handbook* (NP 100) should be consulted. The echo sounding trace should be marked with times, depths, etc., and forwarded with the report. It is important to state whether the echo sounder is set to register depths below the surface, or below the keel; in the latter case the vessel's draught should be given. Time and date should be given in order that corrections for the height of the tide may be made where necessary. The make, name, and type of echo sounder set should also be given.
6. Modern echo sounders frequently record greater depths than the set's nominal range, e.g. with a set whose maximum is 500m a trace appearing at 50m may in fact be 550m or even 1,050m. Erroneous deep soundings beyond the sets nominal range can usually be recognised by the following:
 - (a) The trace being weaker than normal for the depth registered
 - (b) The trace appearing to pass through the transmission line
 - (c) The "feathery" nature of the trace.
7. Reports which cannot be confirmed or are lacking in certain details should not be withheld. Shortcomings should be stressed and any firm expectation of being able to check the information on a succeeding voyage should be mentioned.
8. Reports of shoal soundings, uncharted dangers and navigational aids out of order should, at the mariner's discretion, also be made by radio to the nearest coast radio station. The draught of modern tankers is such that any uncharted depth under 30 metres or 15 fathoms may be of sufficient importance to justify a radio message.