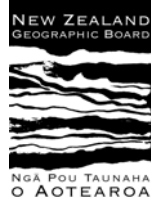
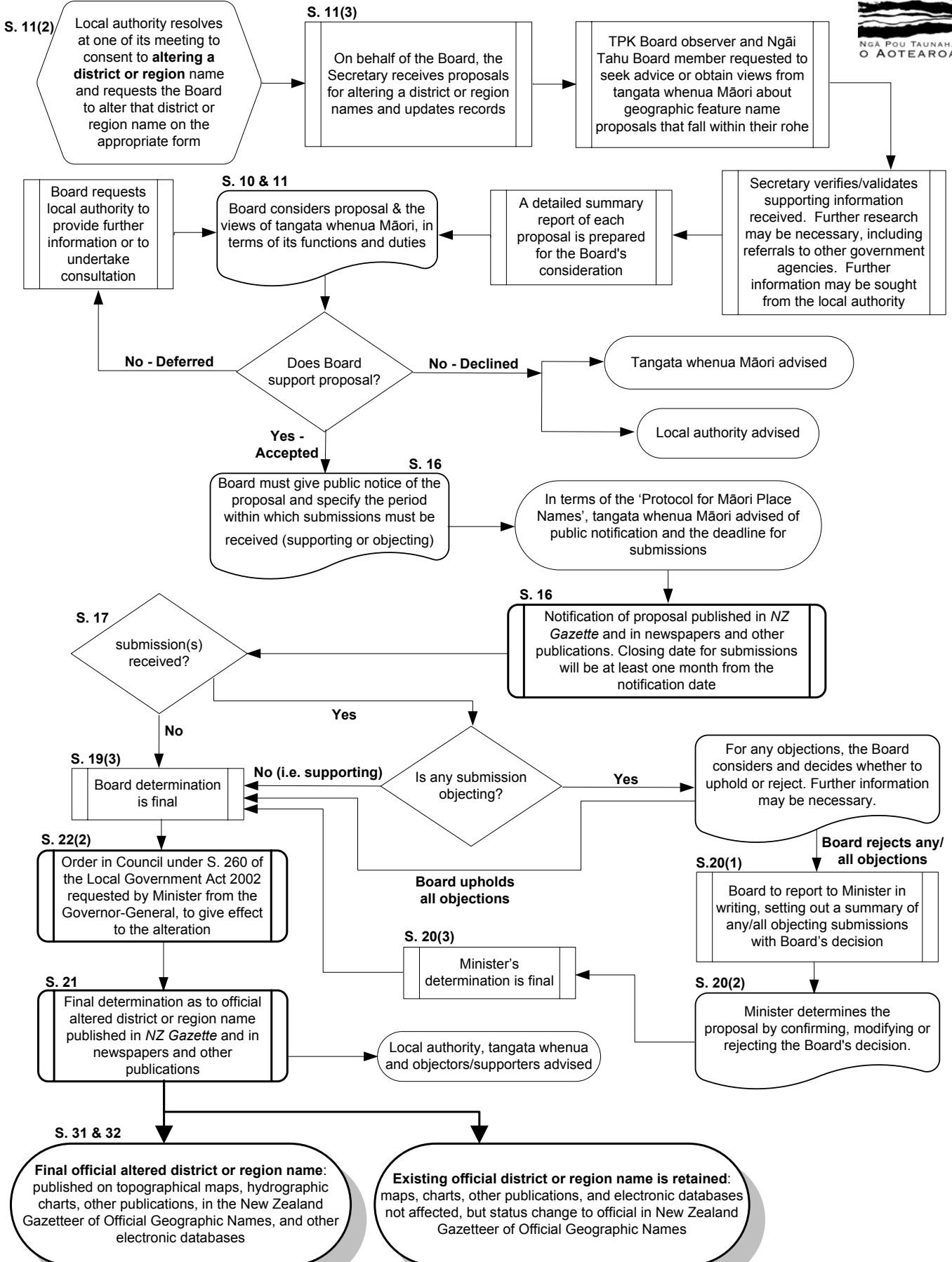


NEW ZEALAND GEOGRAPHIC BOARD (NGĀ POU TAUNAHA O AOTEAROA) ACT 2008



PROCESS FOR NEW ZEALAND LOCAL AUTHORITY DISTRICT & REGION NAMES



Information available to local authorities making proposals includes:

- 1. a proposal form with accompanying guidance notes;*
- 2. a fact sheet;*
- 3. New Zealand Geographic Board (Ngā Pou Taunaha o Aotearoa) Act 2008;*
- 4. naming guidelines;*
- 5. this flow chart; and*
- 6. Protocol for Māori Place Names.*

Consultation:

Those local authorities making proposals are encouraged to undertake their own consultation (e.g. with the local community or interest groups, Department of Conservation, local iwi, etc).

Documentary evidence of any such consultation should accompany proposals for altering a district or region name.

By undertaking consultation, more weight may be added to support the proposal and gives recognition to the appropriate administrative, cultural and heritage aspects, as well as any historical, geographical and/or scientific research undertaken.

Although consultation is not mandatory, it is considered by the Board to be a useful step towards altering a district or region name.

When a proposal is received, the Board observes a 'Protocol for Māori Place Names', whereby the Board directly seeks the views of tangata whenua Māori in respect to proposals within their rohe.