

Crown Pastoral Land Tenure Review

Lease name : BALMORAL

Lease number : PO 265

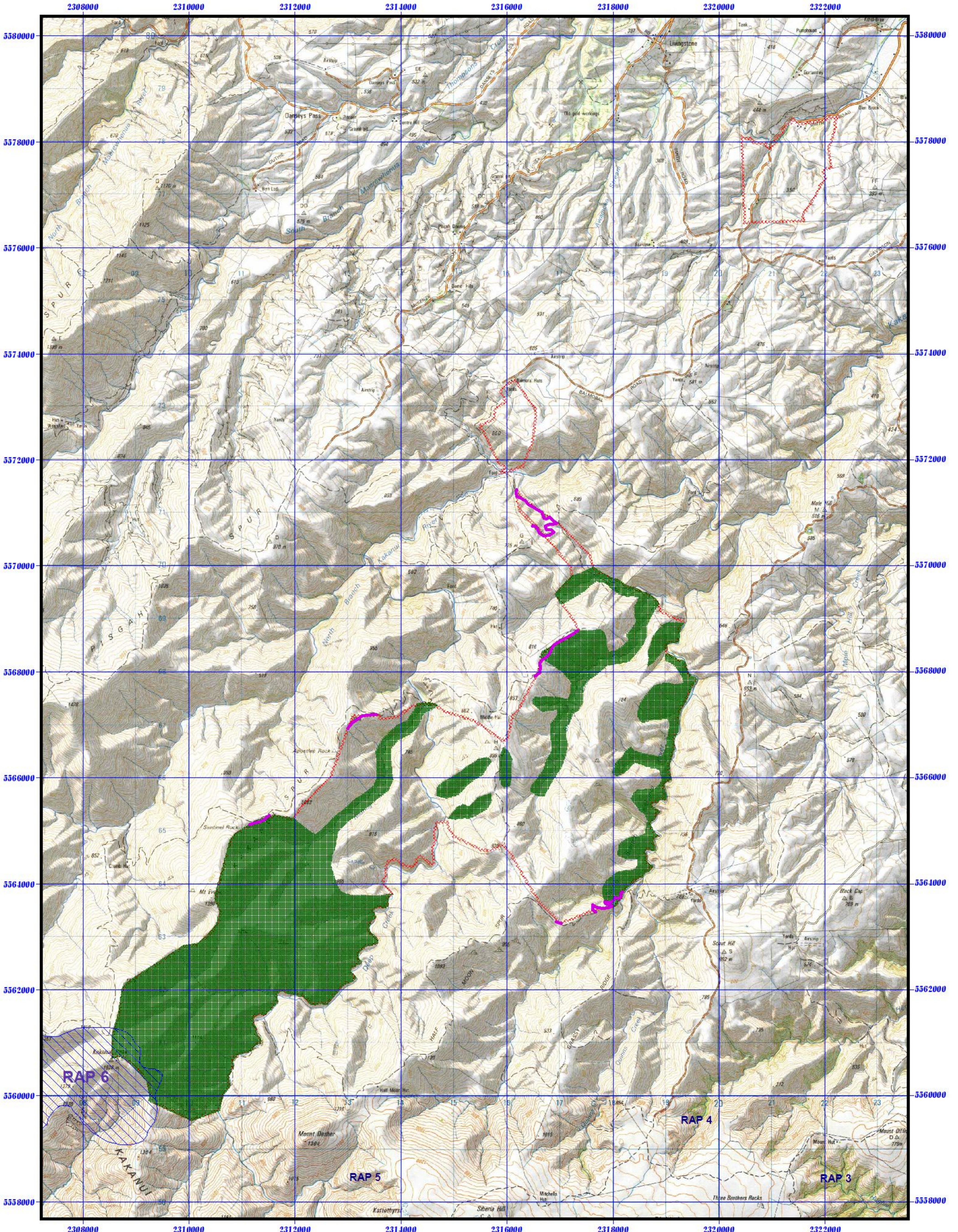
**Plans attaching to the
Conservation Resources Report
- Significant Ecological &
Recreational Map**

These plans attach to and support the Conservation Resources Report provided by the Department of Conservation.

They are released under the Official information Act 1982.

March




05



“RELEASED UNDER THE OFFICIAL INFORMATION ACT”

NZMS 260 141

4.2.3 Significant ecological and recreational resources
Balmoral Pastoral Lease

-  Significant recreational resources
-  R A P s
-  significant ecological resources

1000 0 1000 2000 3000 4000 Meters

