

Crown Pastoral Land Tenure Review

Lease name : BRANCH CREEK

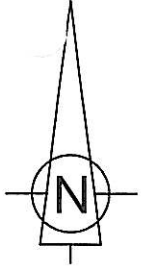
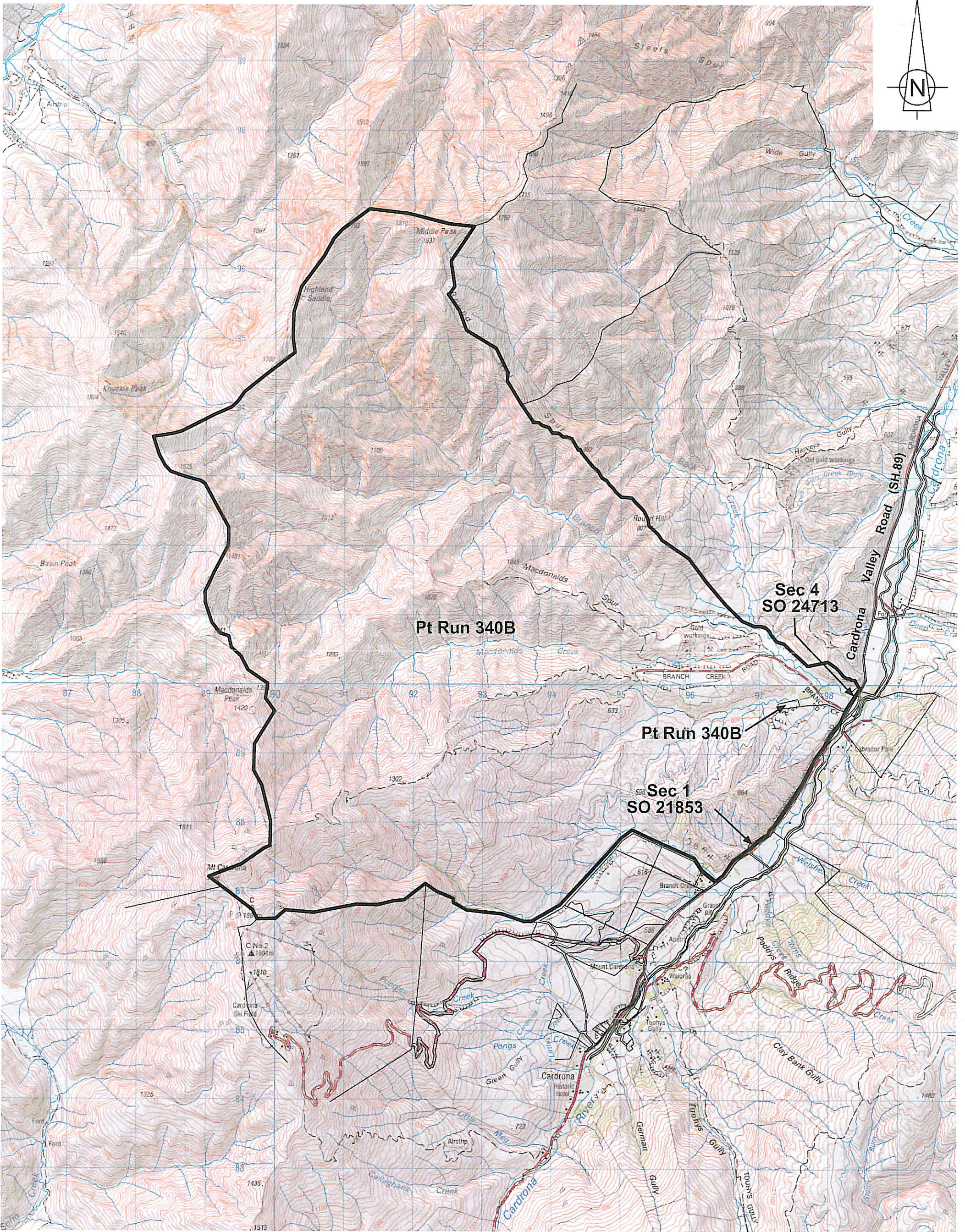
Lease number : PO 052

Plans attaching to Due Diligence Report

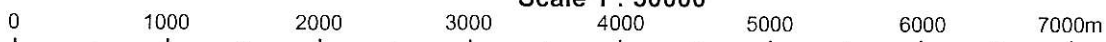
These plans attach to and support the Due Diligence Report.

They are released under the Official Information Act 1982.

January 05



Branch Creek
Scale 1 : 50000



Version	1	2	3	4	5
Otago Land District	Sheet 1 of 1				
NZMS 260 F.40 & F.41	Date 25/09/2001				

Graphics by :