

Crown Pastoral Land Tenure Review

Lease name : Carrickmore (PO 306)
The Homestead (PO 125)
Patearoa Syndicate (PO 142)
Waipiata Syndicate (PO 214)
The Beeches 1 (PO 175)
Riverslea (PO 178)

Conservation Resources Report - Part 9

As part of the process of Tenure Review, advice on significant inherent values within the pastoral lease is provided by Department of Conservation officials in the form of a Conservation Resources Report. This report is the result of outdoor survey and inspection. It is a key piece of information for the development of a preliminary consultation document.

Note: Plans which form part of the Conservation Resources Report are published separately.

These documents are all released under the Official information Act 1982.

January 06

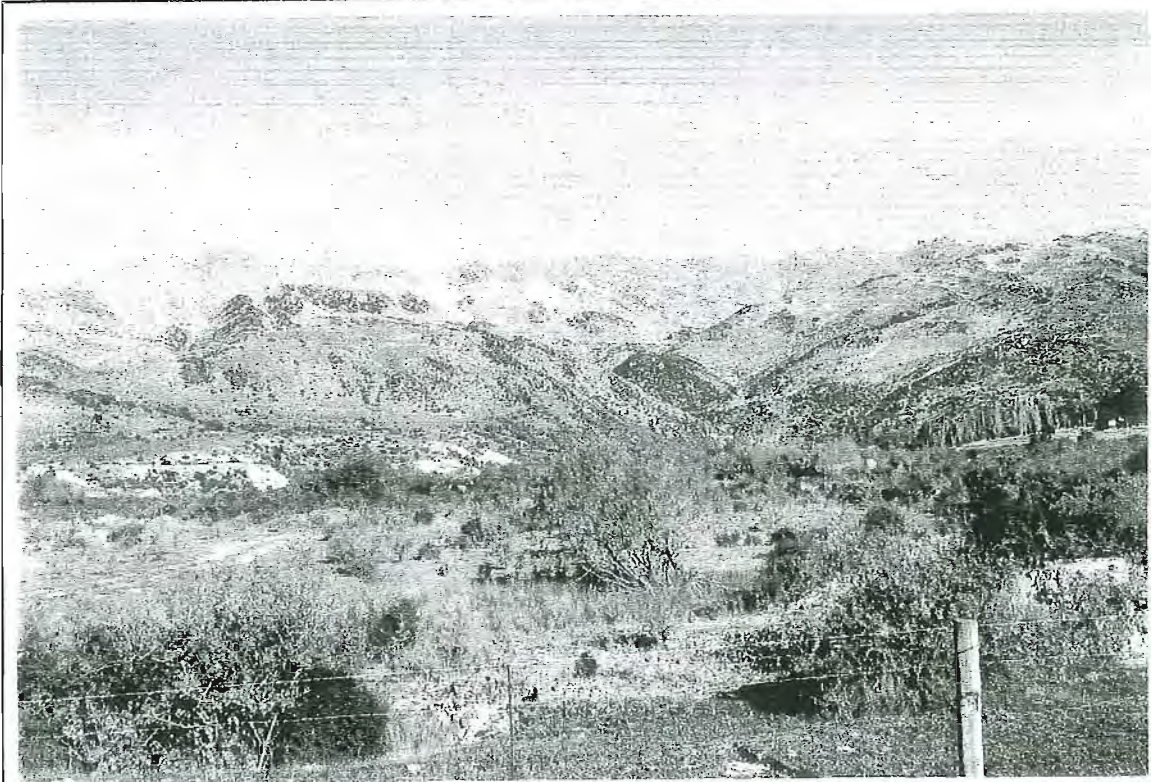


Fig. 1. The northern flanks of the Rock and Pillar Range are more gentle than the steep eastern face of the range, and lower in elevation than the crest of the range which lies further south. This view, from the lower Pig Burn shows some gold workings on the lower slopes of The Beeches I with modified grassland and scrub above. The highest slopes are characterised by more natural snow tussock grasslands.



Fig. 2. The boundary between The Beeches I and Riverslea lies just to the west (left in this view) of the unnamed creek which runs into a storage dam and then, via the water race below it, to the Waipiata gold sluicings adjacent to the northern boundary of Riverslea. Water races could provide opportunities for easy day walks with the added interest related to their heritage values. This view also shows the modified grassland and scrub which typifies the lower slopes of both properties.

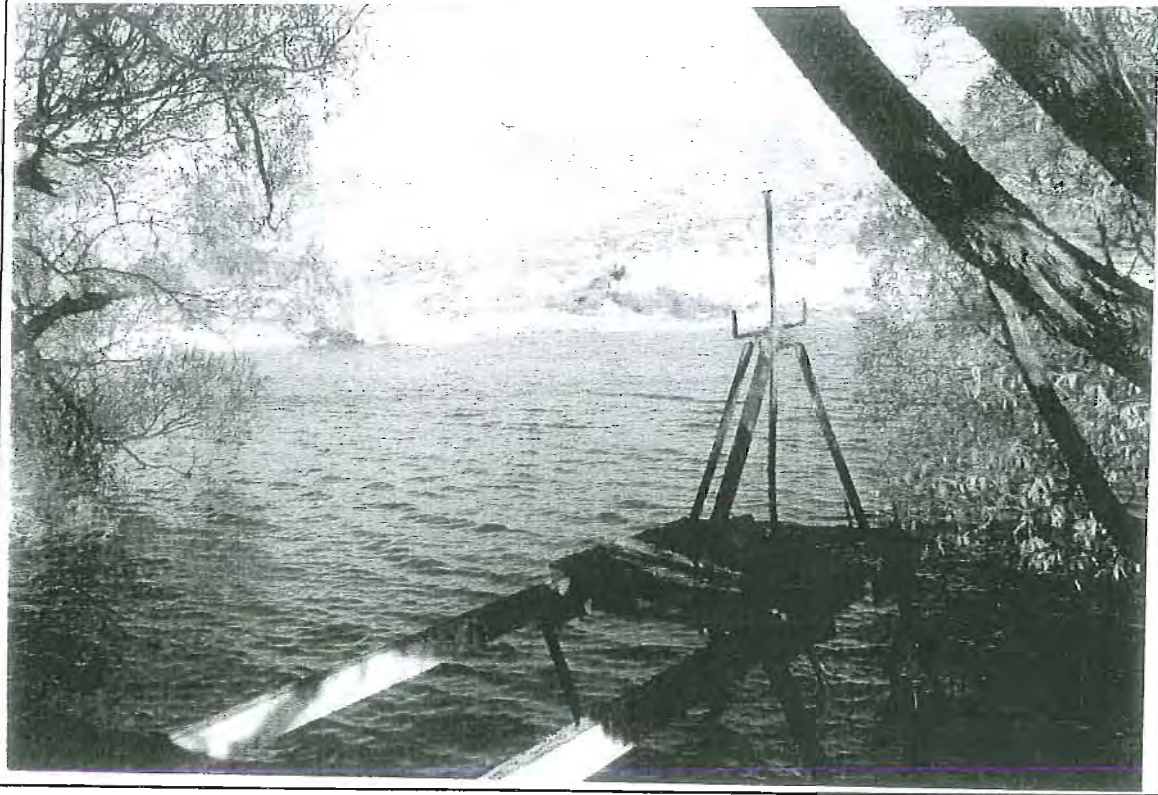


Fig. 3. Both properties have areas occupied by old gold sluicings and dams which are excluded from the pastoral lease. These areas and the gold mining relics they contain are of significant interest to the public. Increasingly people are taking an interest in heritage values and tenure review provides a great opportunity to add to the existing reserve areas. This view shows the dam at Hamiltons Diggings which, through the control structure in the foreground, now provides water for irrigation.

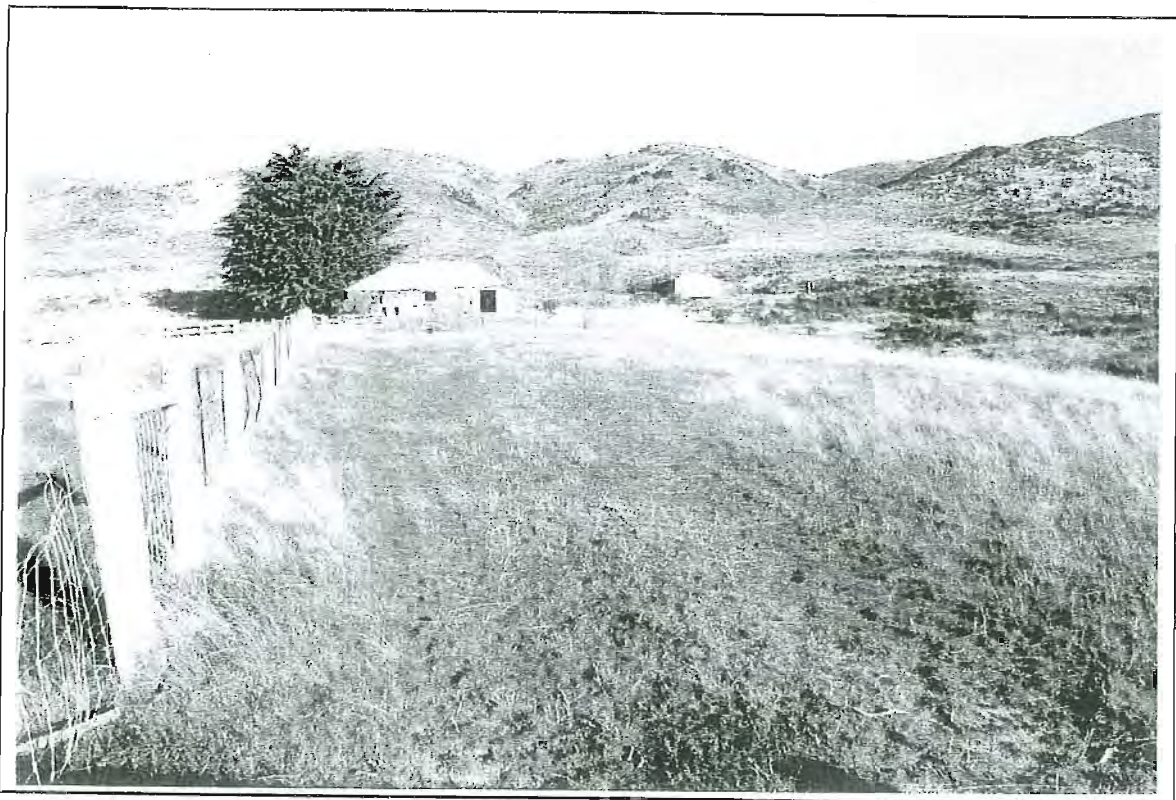


Fig. 4. There are two historic buildings on the Waipiata Diggings boundary of Riverslea, one of which is a cottage available for rent. From here a marked track leads up to a stone hut high in the Cap Burn catchment. This route could provide the much needed foot and mountain bike access to the northern end of the legal road along the crest of the Rock and Pillar Range.



Fig. 5. An historic stone hut (with a grey iron roof) is situated on the spur in the middle of this view, adjacent to a large rock outcrop and part of an extensive water race system. A walking track to the hut has already been developed and above the hut, a track can be traced leading to a high point on the back boundary at 1212m. This would provide good public access to the northern end of the Rock and Pillar Range. Easements are required to provide access for exploration of the extensive water race system.

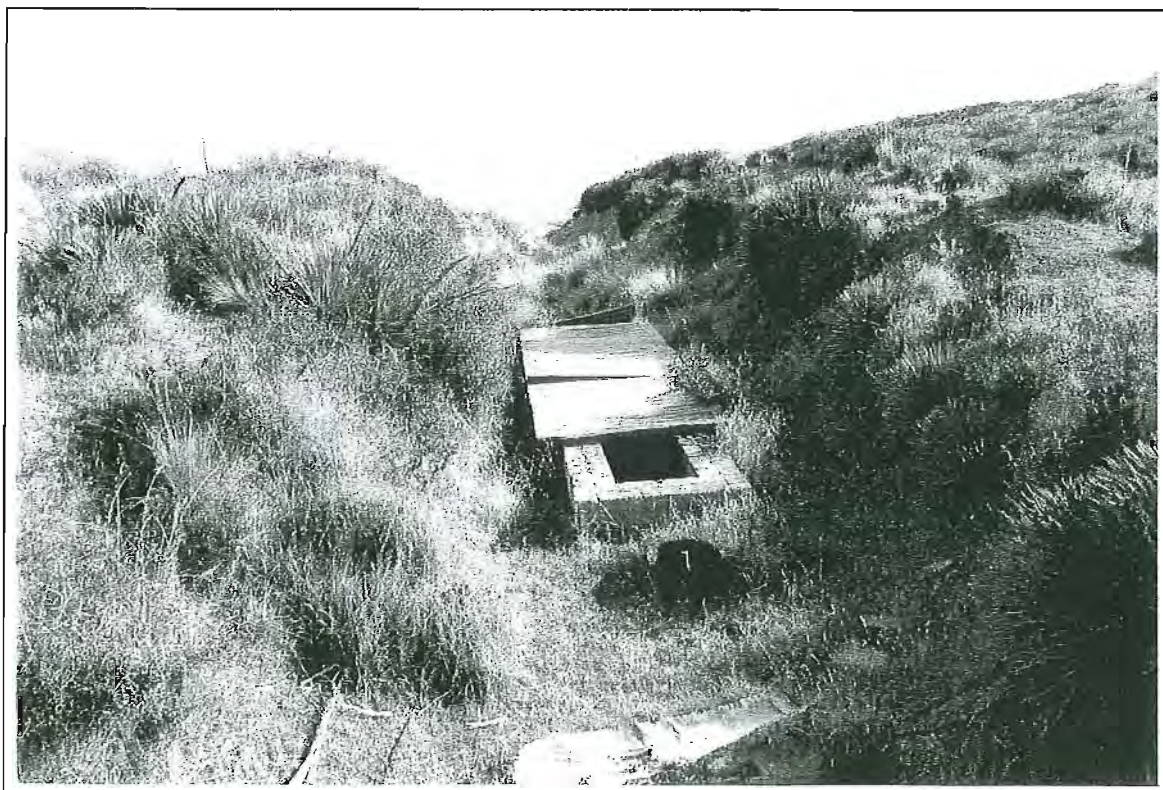


Fig. 6. The track to the stone hut passes through a saddle where the water race has been lowered by putting it underground. This race is still in use to provide irrigation water for farms lower down. The extensive water race system is evidence of the huge amount of effort put in by the miners of the nineteenth century and now provides heritage interest for 21st. century walkers and trampers.



Fig. 7. Complementary to the Hamiltons Diggings, there are significant examples of gold sluicing and associated water races within the pastoral lease areas of these properties. This view shows extensive workings in the lower Pig Burn on The Beeches I which should be protected as an historic reserve. Controlled grazing might be accommodated with conditions to ensure that no damage occurred to the historic heritage values.



Fig. 8. Some of the sheltered gullies on Riverslea contain significant inherent natural and landscape values. These are particularly noticeable in contrast to the more heavily modified grassland which is typical of the lower slopes, and can be seen at the left of this view. Where there sheltered gully shrublands occur as small discrete patches, protection under covenant may be appropriate.



Fig. 9. There is a delightful spot beside the ford on Gorge Road which is very close to the former gold workings on the Beeches and which would make an ideal family picnic site. A small area here should be designated recreation reserve.

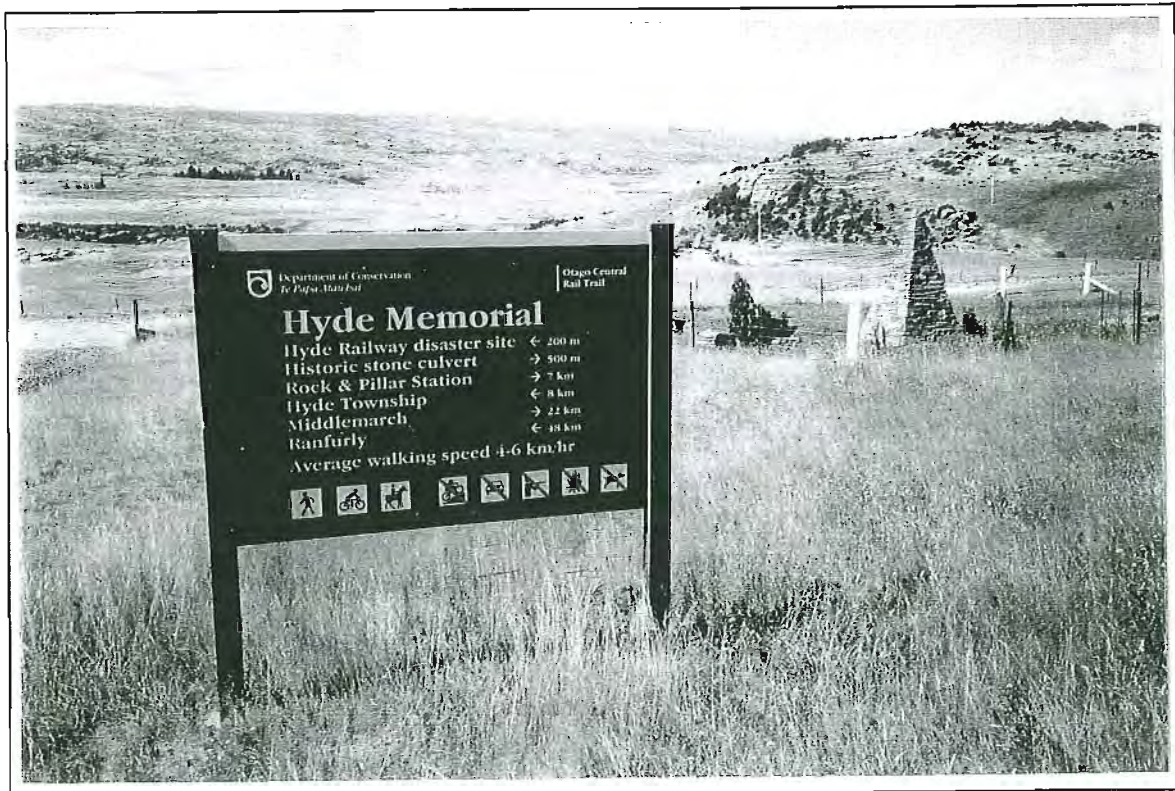


Fig. 10. The provision of public access to the northern end of the Rock and Pillar Range is important because increasing numbers of people are using the Otago Central Rail Trail and many of these are looking for other places to explore while in Central Otago. Visits to the heritage sites on Riverslea and The Beeches I, as well as the reserves at Waipiata and Hamiltons, would provide just such additional recreational opportunities.

30 Earnsclough rd.
Alexandra
28-04-05

Department Of Conservation

RE: Tenure review

Central Otago Deerstalkers Club wish to make a submission to the last round of reviews,
being

The Homestead
Carrickmore
Patearoa
Riverslea
The beaches 1
Wiapiata Syndicate
Leaning Rock
Moa Hills
Mt. Grand
Glenfellen
Cambrian Hills
Caithness
Mt Aspiring Station
Coronet Peak

We wish the Department to note our request

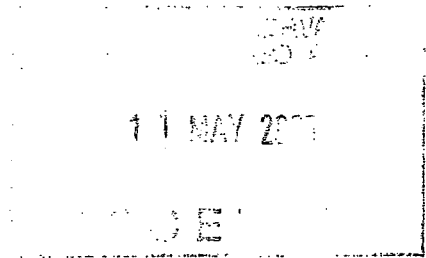
1. for good public four wheel drive access to the above blocks
2. that permission to carry guns be met by DOC permit only
3. and dogs be allowed on those blocks

Thank You
Alan Mackie

Re 2004/05 Tenure review program

In behalf of the Southern Lakes branch of New Zealand Deerstalkers Association like to make some comments on the current Tenure review program. The properties in question

The Homestead (Rock and Pillar)
Parrickmore (Rock and Pillar)
Mataeroa Syndicate (Rock and Pillar)
Liverslea (Rock and Pillar)
The Beeches (Rock and Pillar)
Waipata Syndicate (Rock and Pillars)
Meaning Rock (Cromwell Grange)
Toa Hills (Old Man Range)
Mt Grand Hawea Flats
Milnfellen (Upper Matakura)
Cambrian Hills (Dunstons)
Faithness (Kakanui)
Mt Aspiring Station
Coronet Peak



like to make a general comment on the process rather than individual properties

We are increasingly concerned about the lack of recognition given to hunting as a recreational activity. Access with firearms and dogs is still often put in the too hard basket. Hearing a DOC staff member mentioning the three principal ways of access as being walking, horse back, and push bike is in our eyes cutting out a big proportion of recreationalists. Most of the properties mentioned above do have game animals on them always or certain times of the year.

Hunting is not only about shooting, a lot of time is spent exploring new places and looking around.

We like more recognition given to hunting as a recreational activity and provision made where it is appropriate for access with firearms and/or dogs.

Sincerely
Ians Biemond
Secretary Southern Lakes Branch NZDA

Arnsleugh Road Rd 1
Alexandra