

## **Crown Pastoral Land Tenure Review**

**Lease name : LOCH LINNHE**

**Lease number : PO 230**

### **Conservation Resources Report - Part 9**

As part of the process of Tenure Review, advice on significant inherent values within the pastoral lease is provided by Department of Conservation officials in the form of a Conservation Resources Report. This report is the result of outdoor survey and inspection. It is a key piece of information for the development of a preliminary consultation document.

Note: Plans which form part of the Conservation Resources Report are published separately.

These documents are all released under the Official information Act 1982.

**August 07**

## Zones of SIV's

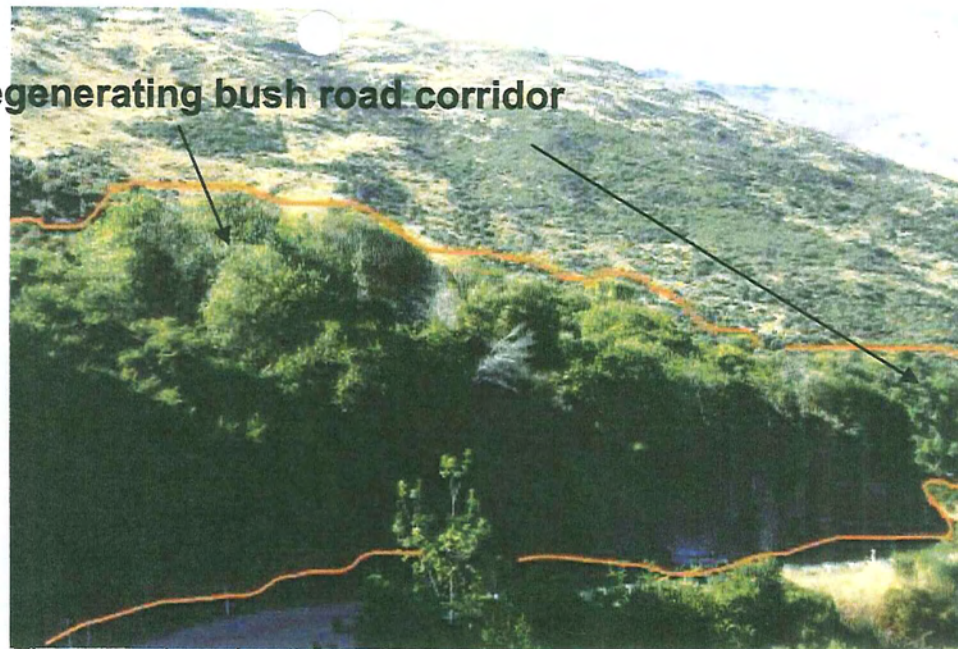
- F&B identified significant inherent values in the heavy snow tussock belt above 700m, the shrubland belt, and the regenerating forest/shrubland above and below the road.

- F&B recommends return the regenerating roadside corridor to full crown ownership and control as scenic reserve.

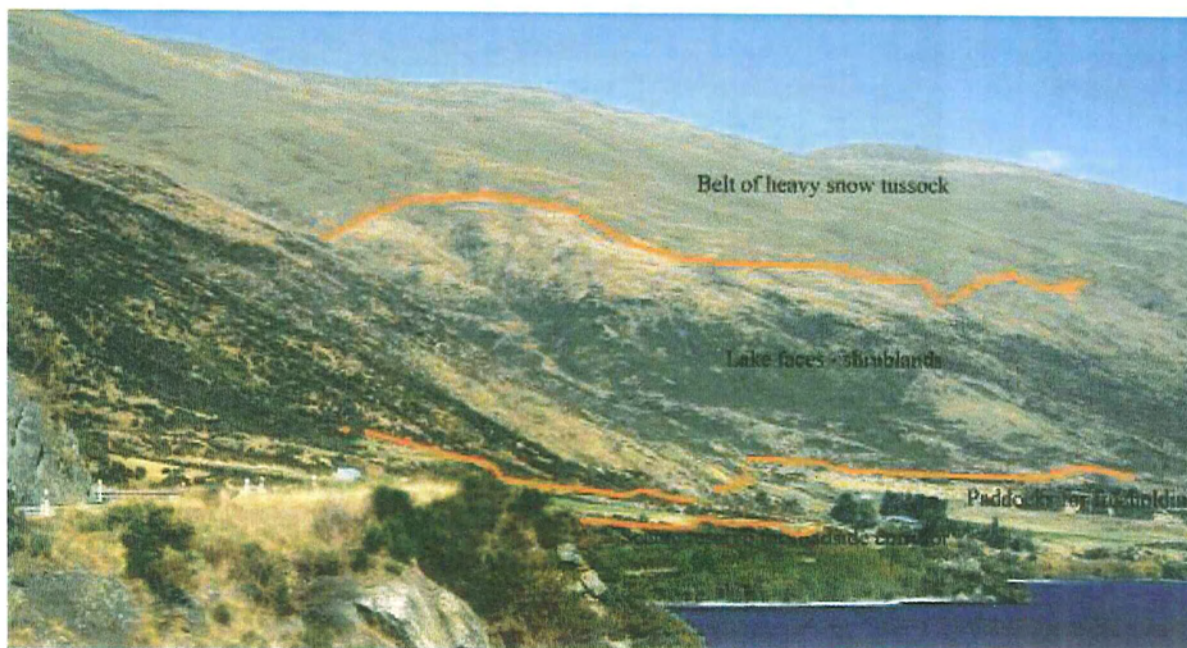
- F&B recommends return the lakeside faces to full Crown ownership and control to be included in a Remarkables Conservation Park.

- F&B recommends free holding unencumbered the developed paddocks on the terraces.

Scenic regenerating bush road corridor



The orange boundary line is approximate only



The orange boundary line is approximate only.

## Landscape values of the lake front and hill slope shrublands



- This landscape retains natural elements that were characteristic of prehuman landscapes in the Central Otago Lakes area – shrublands on the dry hill slopes, beech forest in the wetter gully areas, and broad leaved forest/shrubland along the Lakeshore margins and above the road on shady faces and in gullies. It ranks as being of high significance.

## SIV values of regenerating shrublands

- **Highest significance should be accorded to the shrublands and regenerating forest as they provide habitat, particularly small native birds for falcon. We observed one falcon, but we know this is a significant habitat for falcons which are listed as a threatened species in gradual decline.**
- **Protection of the shrubland belt will increase the biodiversity values of the proposed remarkable park. In many places it is likely the shrublands will become broad leaf forest which provide for more diverse wildlife.**
- **These woody shrublands are in their approximate position in the prehuman landscape, and are the beginning of restoration towards an ecosystem that would have existed in prehuman times. Scattered amongst the shrubs are several coprosma species, native brooms, cabbage trees, pittosporum, broadleaf, tutu, flax, and hebes. Exotic shrubs such as briar and other weed species exist as do the odd wilding tree species.**
- **The indigenous dominated shrublands are part of an almost continuous altitudinal sequence of lake shore regenerating forest and shrubs, through shrublands and short tussock to tall snow tussock and higher altitude species on the tops. The shrublands often extend as fingers down the creek beds through the exotic pasture.**
- **There are plenty of seed sources nearby to aid in natural restoration.**
- **Protection of the shrublands will increase the effectiveness of the protection for the upper tussock area and will lead to a more coherent intact and pleasant landscape.**



## Beech Remnants

Forest and Bird recommends protection for an altitudinal sequence of beech forest from close to the Lake shore up the gully at 2179470E 5540050N



Should there be any grazing adjacent to the forest remnants it will be important to fence the remnants and ensure an adequate buffer is provided to enable expansion of the forest across the catchment.