

Crown Pastoral Land Tenure Review

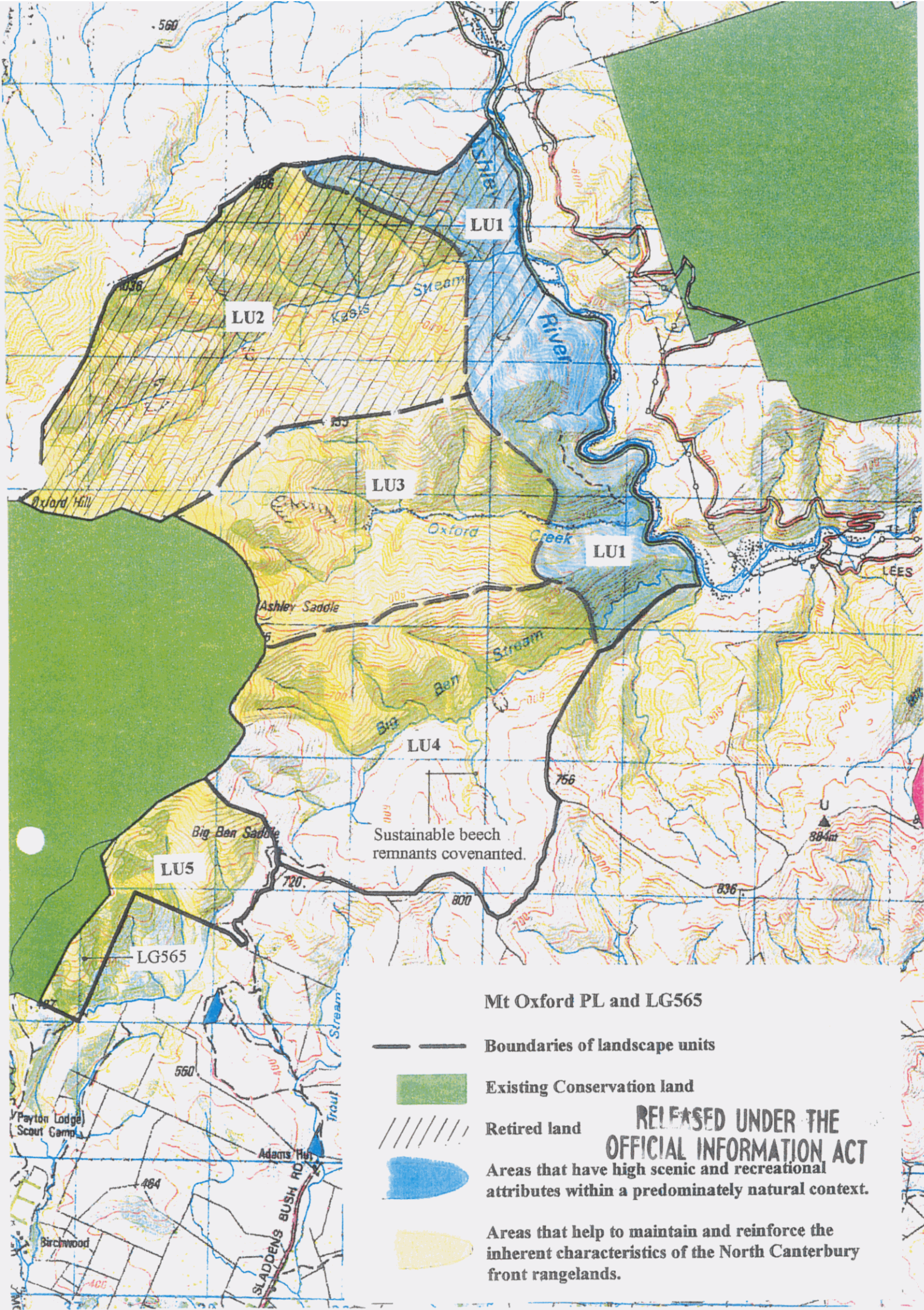
Property : Mt Oxford

Plans attaching to the conservation resources report

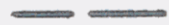




These plans attach to and support the conservation resources report provided by the Department of Conservation.

They are released under the Official information Act 1982.

Copied June 2003



Mt Oxford PL and LG565

-  Boundaries of landscape units
-  Existing Conservation land
-  Retired land
-  Areas that have high scenic and recreational attributes within a predominately natural context.
-  Areas that help to maintain and reinforce the inherent characteristics of the North Canterbury front rangelands.

**RELEASED UNDER THE
OFFICIAL INFORMATION ACT**

Sustainable beech remnants covenanted.

Payton Lodge Scout Camp

Birchwood

SLADDENS BUSH RD

LEES

U
884m