

## **Crown Pastoral Land Tenure Review**

**Lease name : ROSTRIEVER**

**Lease number : PO 309**

### **Plans attaching to the Conservation Resources Report Values Maps**

These plans attach to and support the conservation resources report provided by the Department of Conservation.

They are released under the Official information Act 1982.

**August 04**

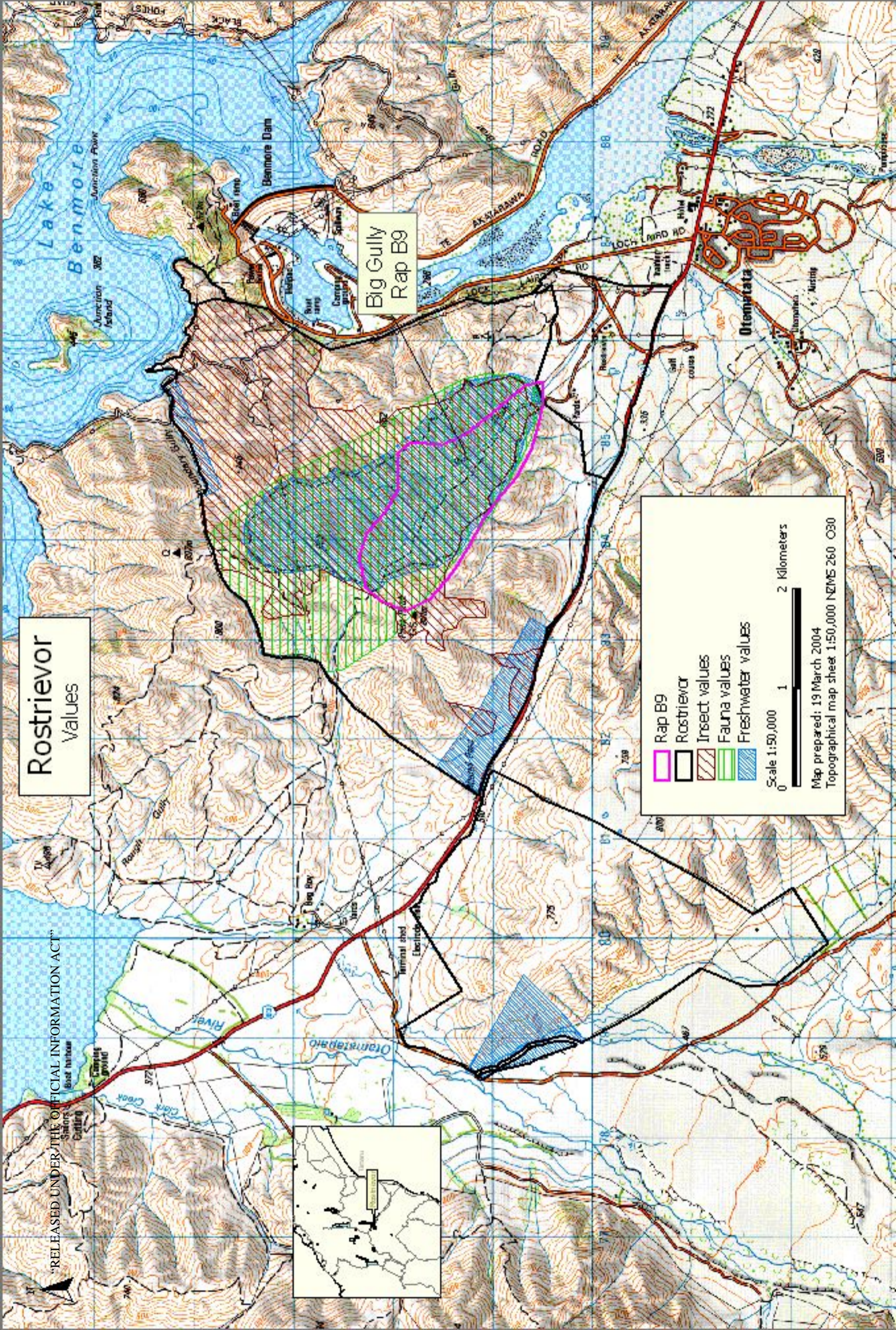
# Rostrivior Values

## Big Gully Rap B9

Rap B9  
 Rostrivior  
 Insect values  
 Fauna values  
 Freshwater values

Scale 1:50,000  
 0 1 2 Kilometers

Map prepared: 19 March 2004  
 Topographical map sheet 1:50,000 NZMS 260 030



# Rostrivior Values

Site B  
Grand Skink

Site A  
Grand Skink

RAP B2  
North Lindis RAP

Rap B2  
 Rostrivior  
 Freshwater values  
 Fauna values  
 Insect values

Scale 1:40,000  
 0 1 2 Kilometers

Map prepared: 19 March 2004  
 Topographical map sheet 1:50,000 NZMS 260 030

