

## Crown Pastoral Land Tenure Review

Lease name : Sawdon

Lease number : Pt 013

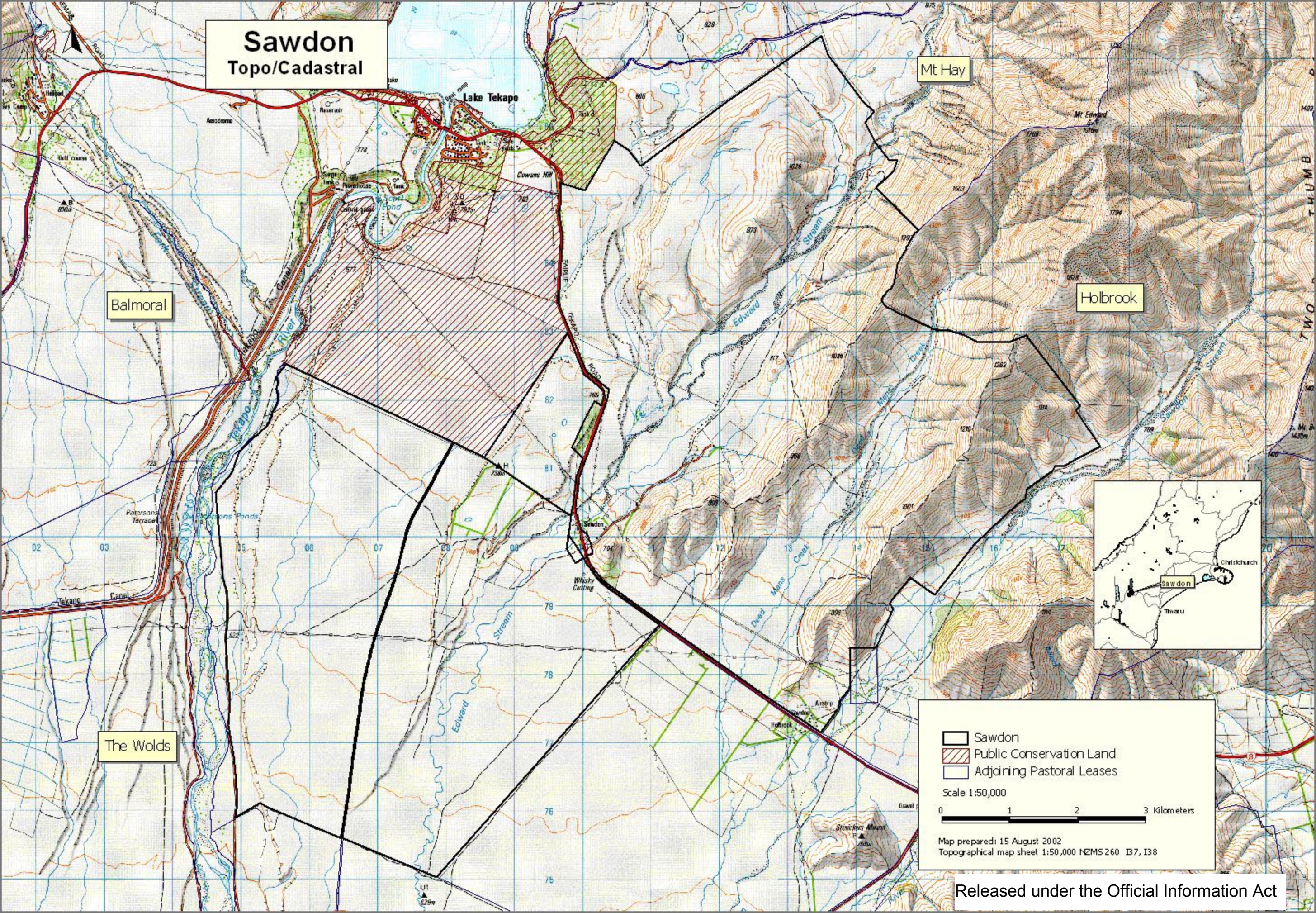
### Plans attaching to the conservation resources report

These plans attach to and support the conservation resources report provided by the Department of Conservation.

They are released under the Official information Act 1982.

Copied June 2003

# Sawdon Topo/Cadastral



Balmoral

The Wolds

Mt Hay

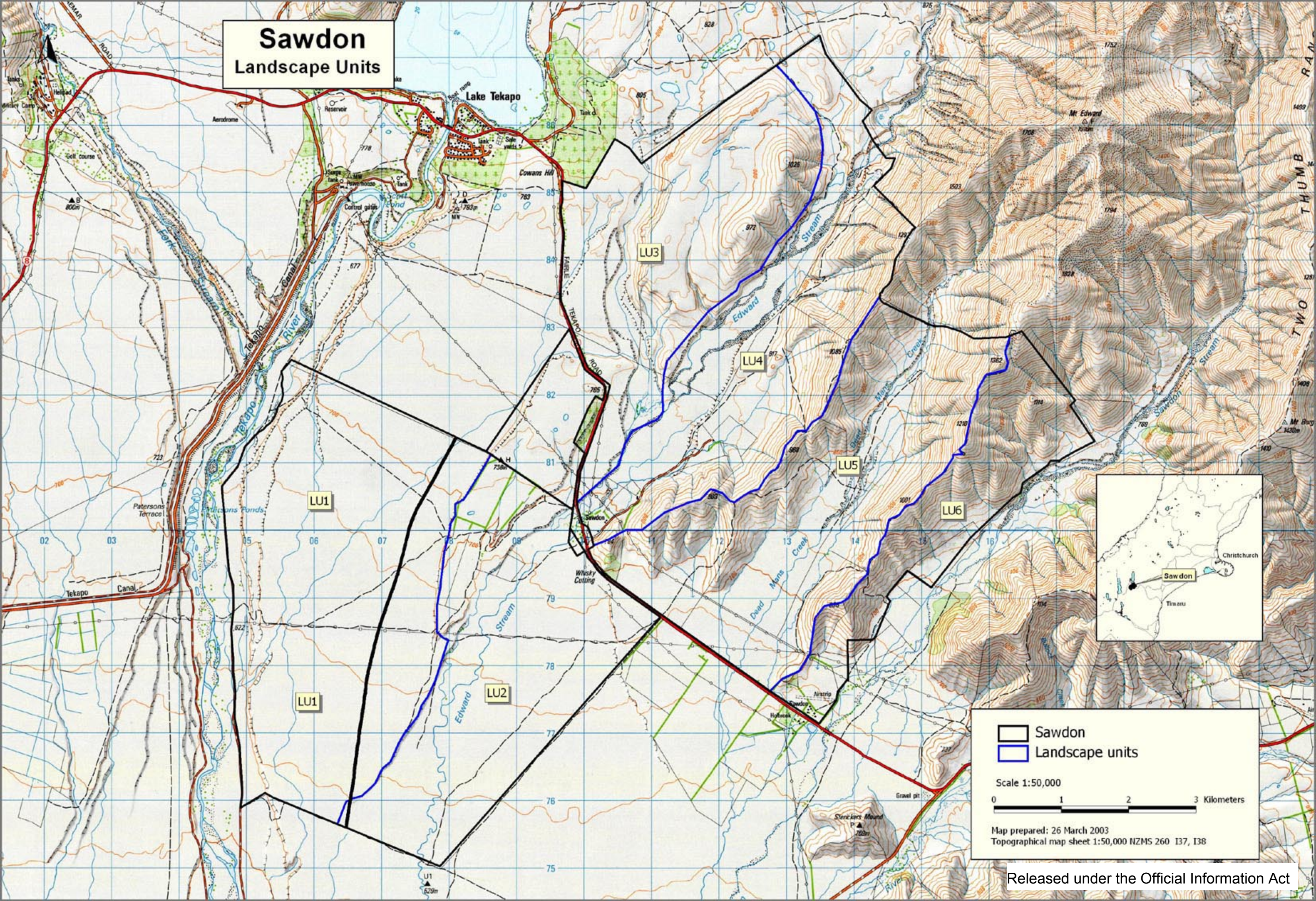
Holbrook



-  Sawdon
-  Public Conservation Land
-  Adjoining Pastoral Leases

Scale 1:50,000  
0 1 2 3 Kilometers

Map prepared: 15 August 2002  
Topographical map sheet 1:50,000 NZMS 260 B7, I38

# Sawdon Landscape Units



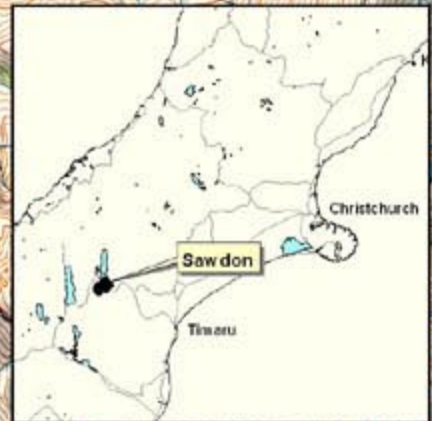
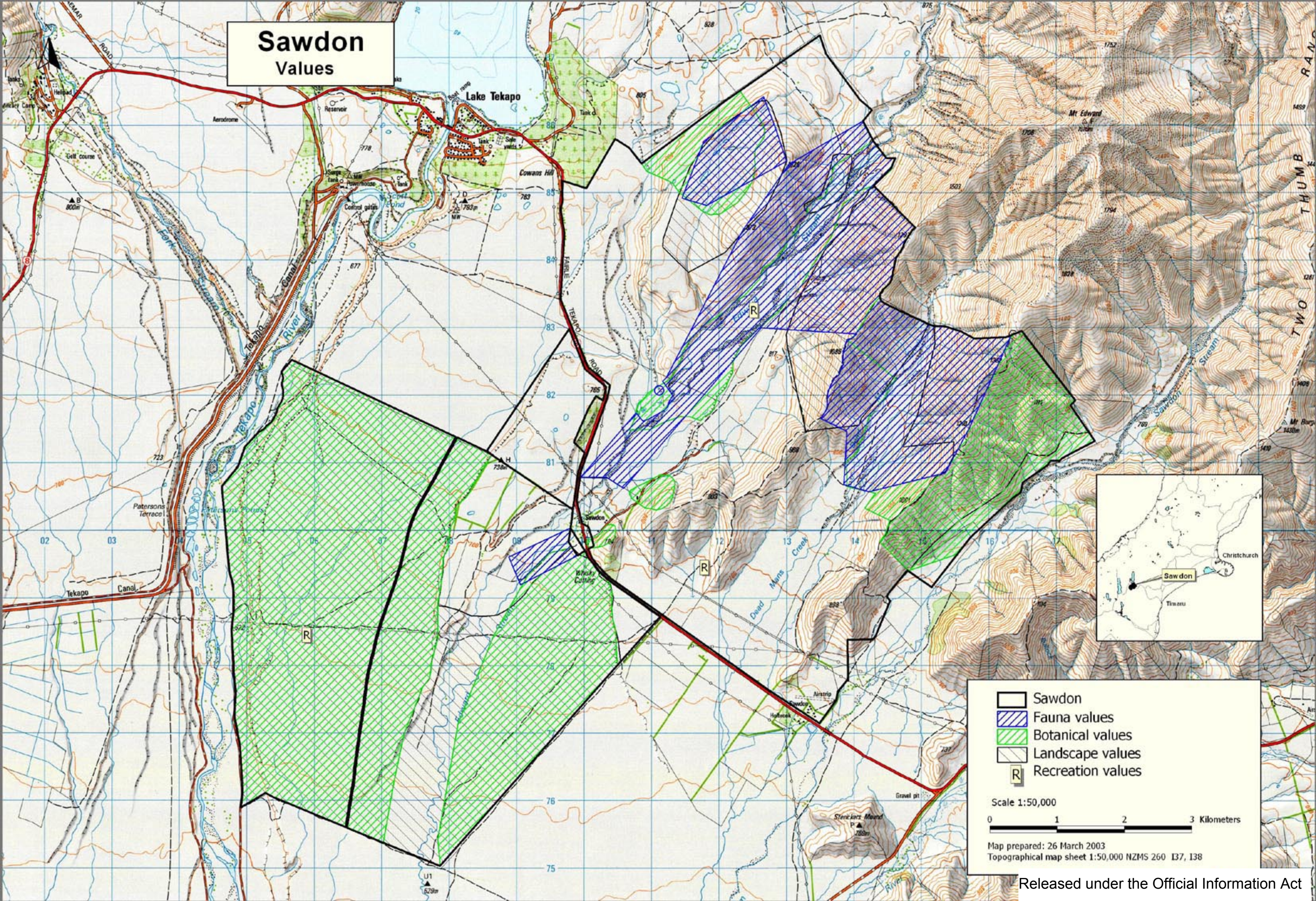
 Sawdon  
 Landscape units

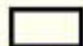



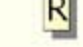
Scale 1:50,000

0 1 2 3 Kilometers

Map prepared: 26 March 2003  
Topographical map sheet 1:50,000 NZMS 260 137, 138

# Sawdon Values



-  Sawdon
-  Fauna values
-  Botanical values
-  Landscape values
-  Recreation values

Scale 1:50,000

0 1 2 3 Kilometers

Map prepared: 26 March 2003  
 Topographical map sheet 1:50,000 NZMS 260 137, 138