

## **Crown Pastoral Land Tenure Review**

**Lease name : WALTER PEAK  
(Special Lease)**

**Lease number : SS 041**

### **Conservation Resources Report - Part 3**

As part of the process of Tenure Review, advice on significant inherent values within the pastoral lease is provided by Department of Conservation officials in the form of a Conservation Resources Report. This report is the result of outdoor survey and inspection. It is a key piece of information for the development of a preliminary consultation document.

Note: Plans which form part of the Conservation Resources Report are published separately.

These documents are all released under the Official information Act 1982.

**July**

**05**

#### **4.1.4 Photographs**

#### 4.1.4 Photographs



**Table Bay, McKinlays Creek and lakes faces of Walter Peak, with regenerating shrublands, forest and bracken fernland. [Neill Simpson]**



**Lake Wakatipu faces of Walter Peak between Table Bay and Beach Bay. [Neill Simpson]**



**Farmland within the Special Lease with Afton Burn East Branch crossing in middle of photo, to Lake Wakatipu. Douglas fir plantations and broom infestation are near to native regeneration occurring within the Afton Burn.**



**Broadleaved forest and shrubland regeneration within the Afton Burn East Branch lower gorge. [Neill Simpson]**



**Lake faces behind Walter Peak High Country Farm tourist enterprise. The large broom infestation is within the adjoining Walter Peak-Beach Bay Recreation Reserve.**



**Beech forest remnant within Mick O'Day Creek with developed farmland on fan in foreground.**



**Regeneration of forest and shrubland on true left of Afton Burn East Branch [Neill Simpson]**



**Shrublands on western side of Afton Peak within Lower Afton Burn East Branch. [Neill Simpson]**



**Beech forest remnant in valley bottom of mid Afton Burn East Branch. [Neill Simpson]**



**Stream edge vegetation within upper Afton Burn East Branch: *Dracophyllum longifolium*, *Hoheria glabrata*, *Coprosma* species and matagouri. [Neill Simpson]**



**View up Afton Burn east Branch towards saddle to Cascade Creek, centre right.  
[Neill Simpson]**



**Head of Afton Burn East Branch. [Neill Simpson]**



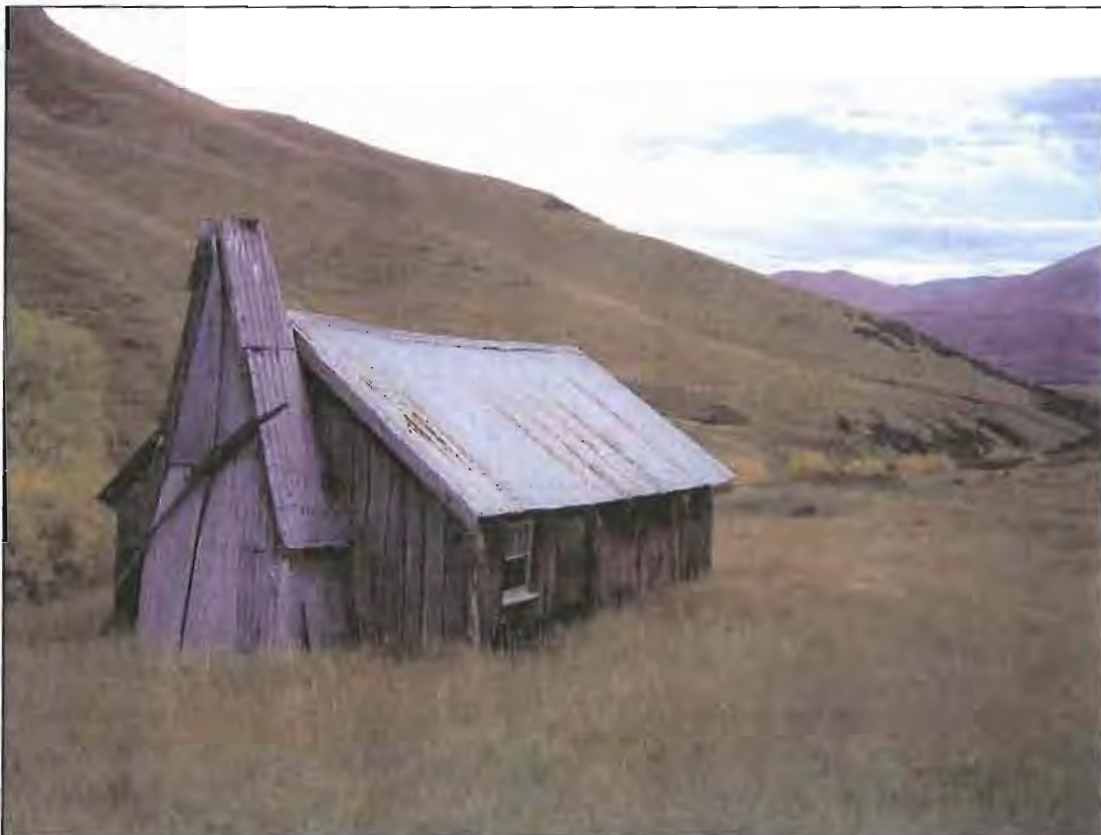
**Mosaic of shrubland and modified grassland in Afton Burn. View down valley towards Lake Wakatipu from near head of valley. [Neill Simpson]**



**Upper slopes of Afton Burn from near Nicholas Saddle. [Neill Simpson]**



**View down Bush Creek towards red tussocklands in Von Valley. Bush remnant to right, and Bush Hut in lower centre.**



**Bush Hut in Bush Creek within modified grassland. The corrugated roof is lined with snow tussock leaves indicating presence of tussocks when hut was built.**



**Looking up Black Spur Creek. Modified grassland in foreground.**



**Von Valley between Black Spur Creek and Bush Creek to north. The Von Road skirts round the red tussockland wetland in the valley floor. Ridge Peak and body of the property is in the background.**



**Wetland in Von valley wetland-grassland [Brian Rance]**



**Wetland community in kettlehole, Von Valley. [Brian Rance]**



**String bogs in upper Lochy, looking down to main Lochy valley.**



**Subalpine shrubland on moraines near Lake Ned, upper Lochy valley**



**Lakes Nigel and Ned in U shaped Lochy valley**



**Beech forest in Lochy valley**



**Upper Lochy Valley [John Barkla]**



**Tussockland in mid Cascade Creek [John Barkla]**



***Brachyglottis cassinioides* in Cascade Creek. [John Barkla]**



**Shrublands in lower Cascade Valley [John Barkla]**



**Beech forest clothes the mouth of a tributary of the Lochy River, up stream of Cascade Creek.**



**Looking down the Lochy River (Walter Peak Special Lease on true left of river). The lower slopes are modified, while the upper slopes retain native vegetation cover.**



**Looking down Killiecrankie Creek towards the beech forest remnant located at its confluence with Lochy River. The steep side slopes retain high natural values.**



**Saddle at the head of McKinlays Creek; Killiecrankie Creek beyond. [Neill Simpson]**



**Screes with *Ranunculus haastii* var. *piliferus* above McKinlays Creek. [Neill Simpson]**



**Wetlands are a common feature in the basins above McKinlays Creek. [Neill Simpson]**



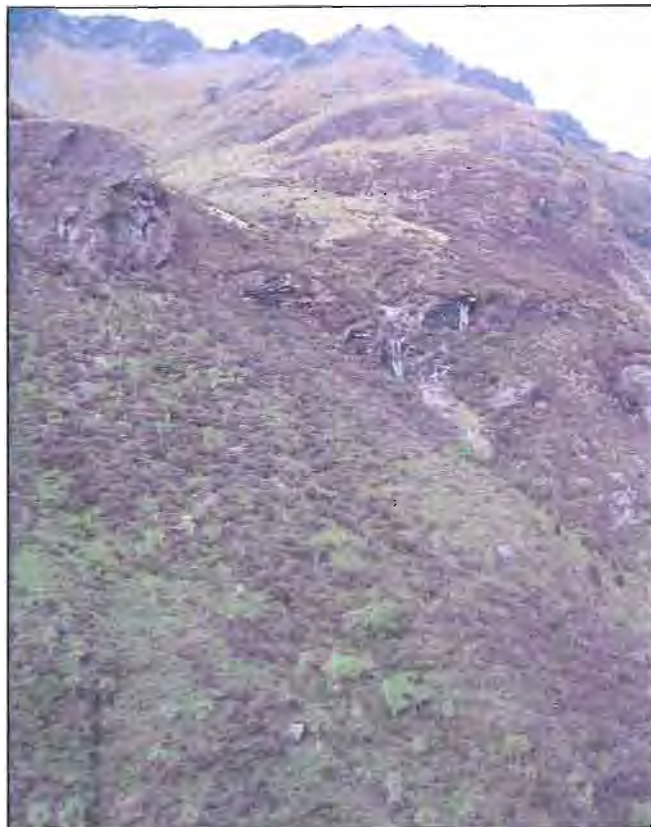
**Slim snow tussockland (*Chionochloa macra*) with short tussockland and cushionfields at 1500m asl. south of Walter Peak. Wither Peak in the background. [Neill Simpson]**



**Riparian vegetation in upper McKinlays Creek. [Neill Simpson]**



**Native shrubland regeneration on true left of mid-lower McKinlays Creek, with Walter Peak ridge above. Mountain wineberry shows its autumn colours.**



**Slopes above the lower McKinlays Creek, looking up towards Walter Peak. Bush regeneration with bracken fernland and *Dracophyllum* subalpine shrubland above.**



**Von wetland-grassland with scattered grey willow trees.**



**Walter Peak Lease from Von Valley**



**Panorama of front faces of Walter Peak**

## **4.2 Illustrative Maps**

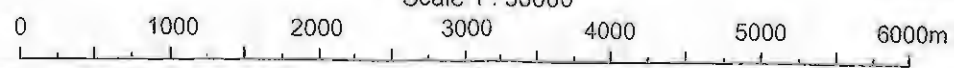
- 4.2.1a, b & c Topo/Cadastral**
- 4.2.2 Values - Landscape Units and Landscape values**
- 4.2.3 Values- Ecological/Recreation**



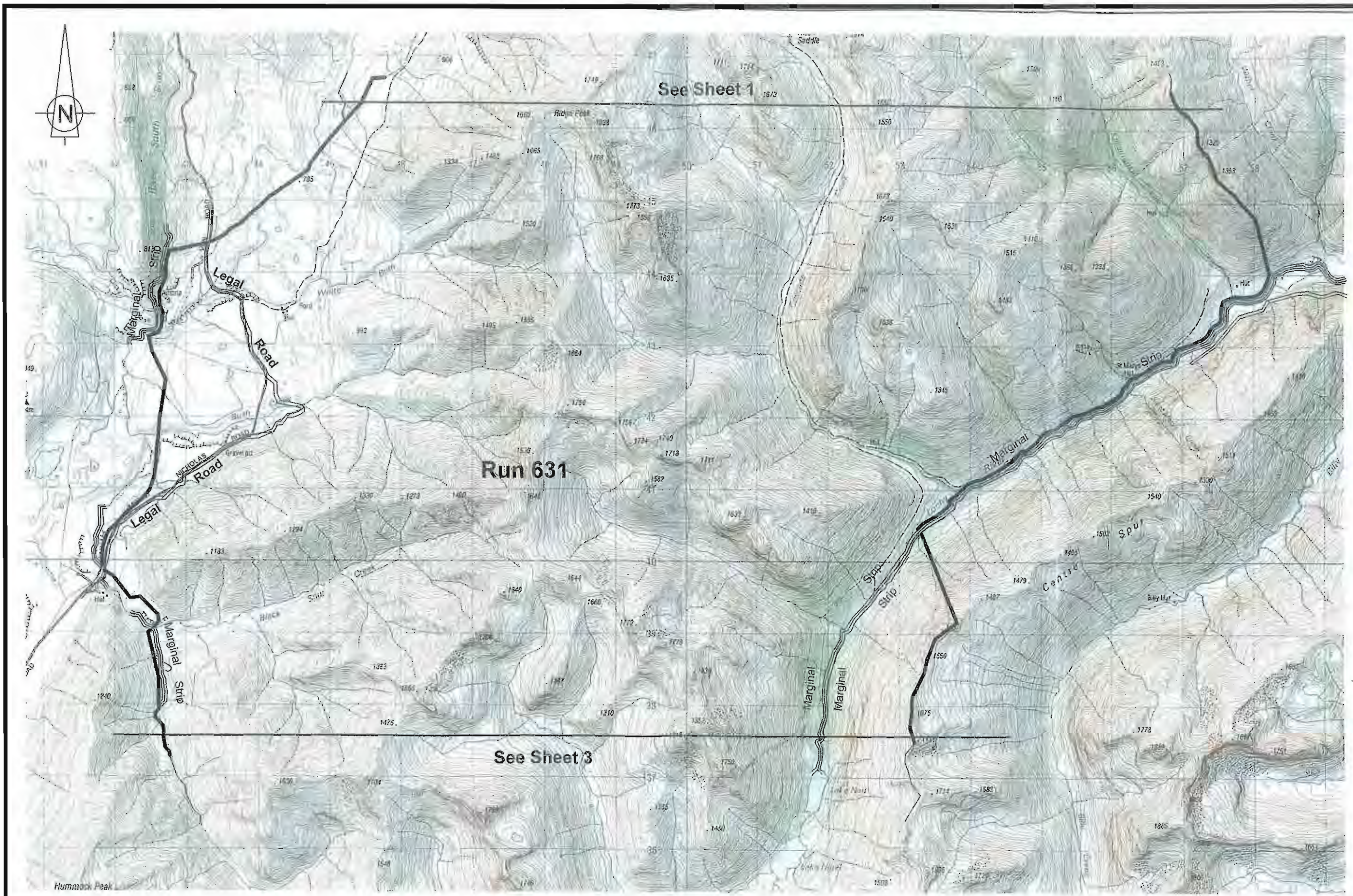
Map 4.2.1a: Topo/cadastral – Walter Peak Special Lease

Walter Peak

Scale 1 : 50000



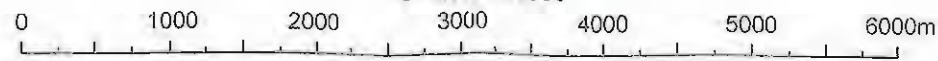
Version	1	2	3	4	5
Otago Land District	Sheet 1 of 3				
NZMS 260 E42					



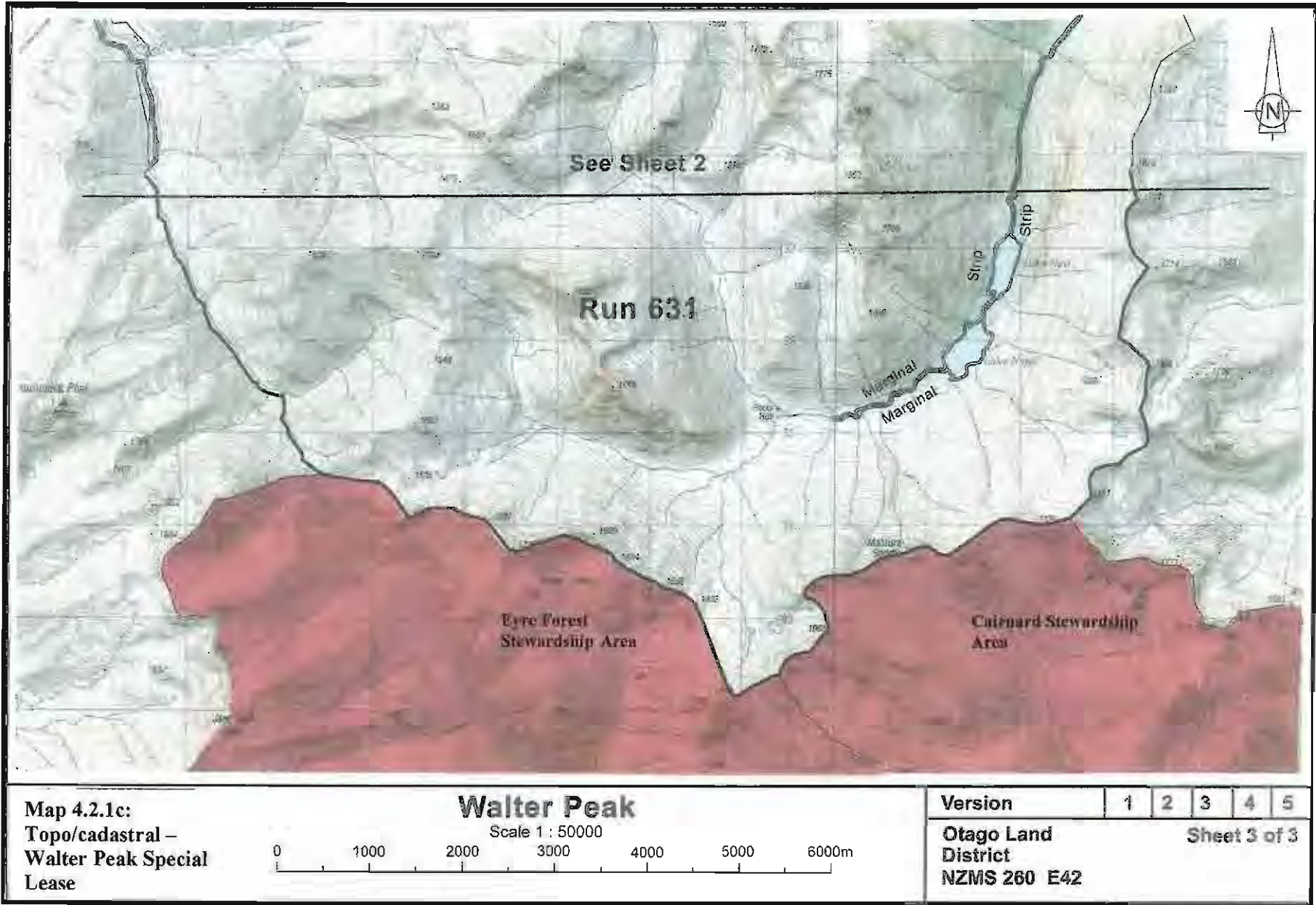
**Map 4.2.1b: Topo/cadastral – Walter Peak Special Lease**

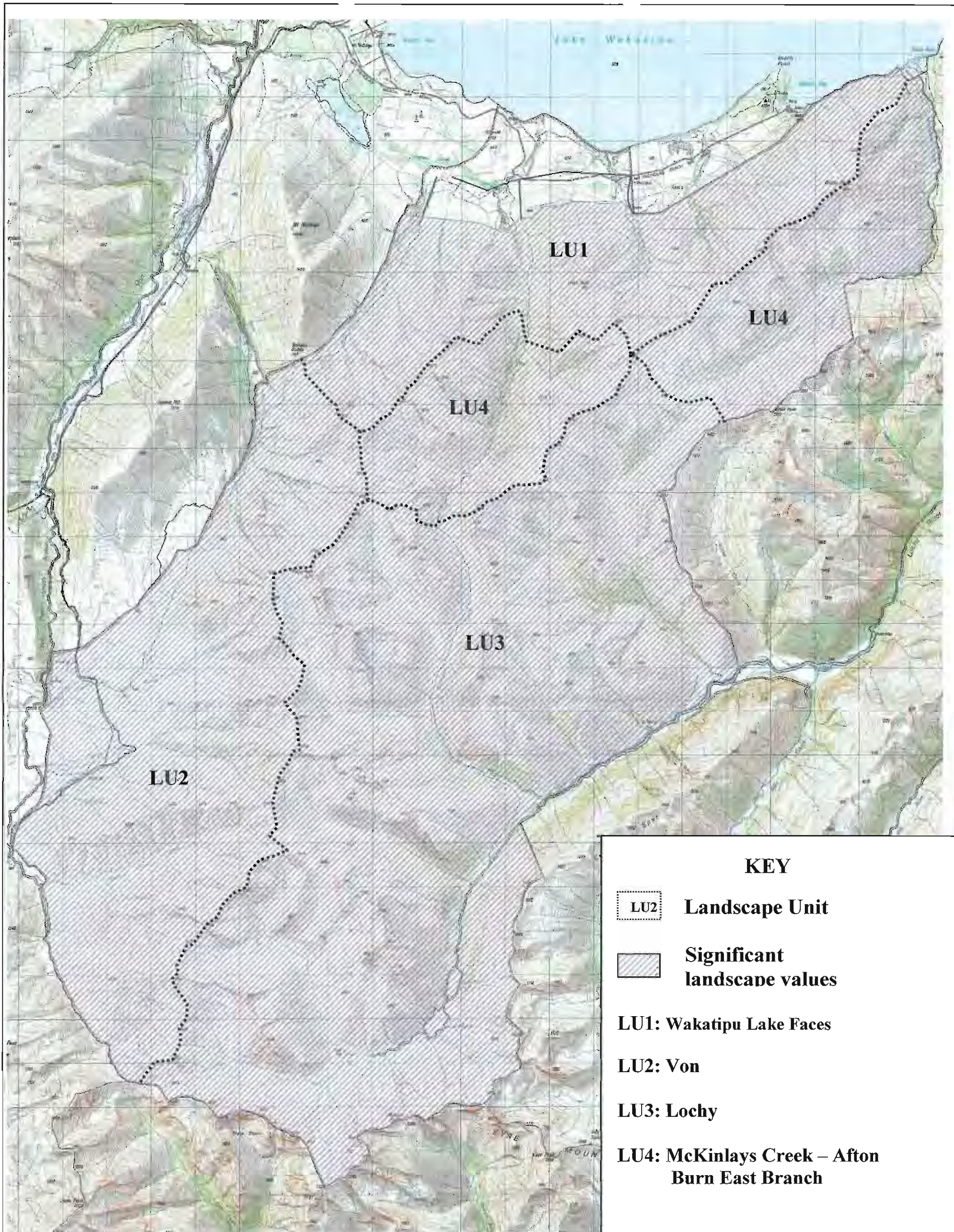
**Walter Peak**

Scale 1 : 50000

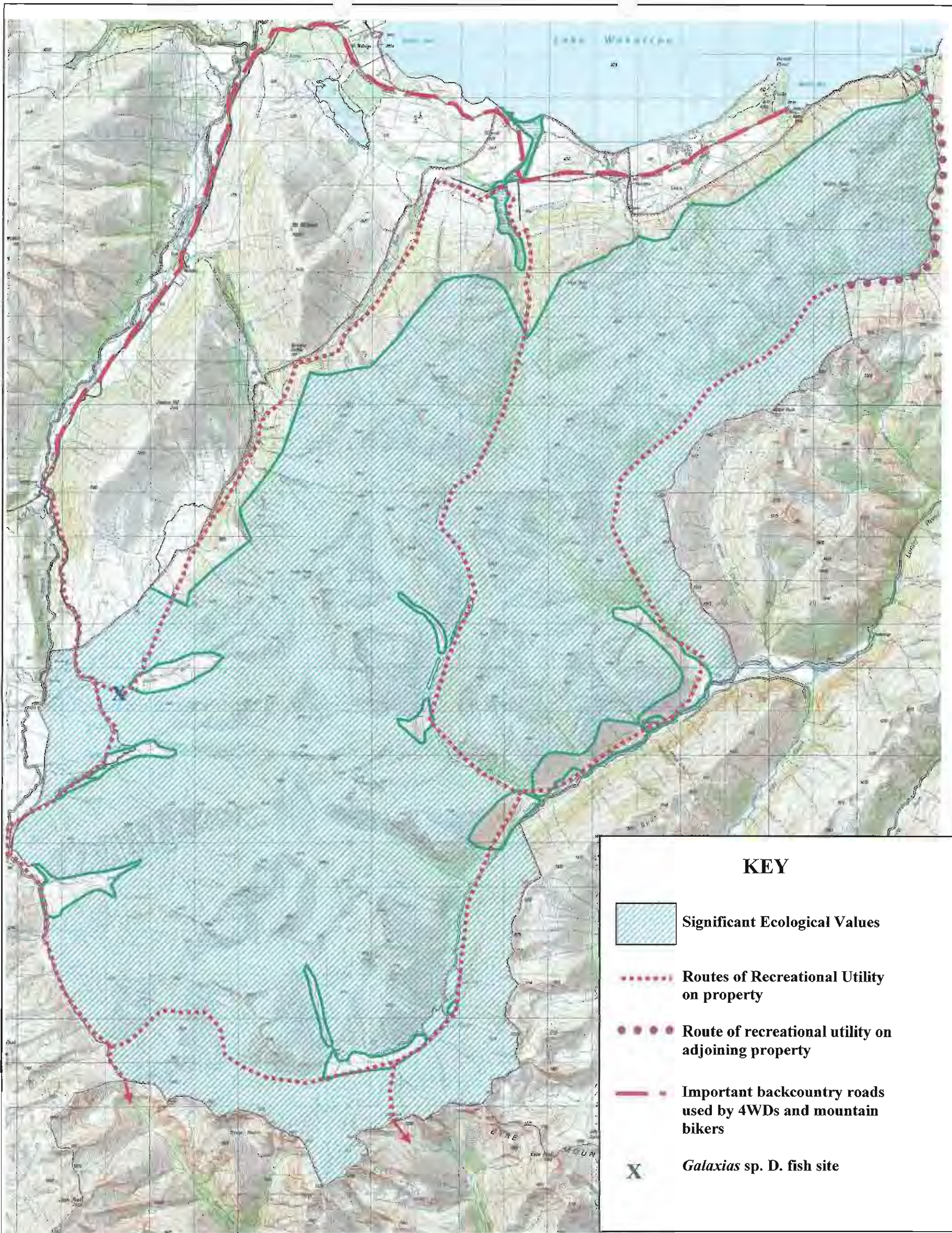


Version	1	2	3	4	5
Olago Land District	Sheet 2 of 3				
NZMS 260, F 42					





**MAP 4.2.2: Landscape Units and Significant Landscape Values – Walter Peak Special Lease**



MAP 4.2.3: Significant Ecological/Recreational Values – Walter Peak Special Lease