

## **Crown Pastoral Land Review of Other Crown Land**

**Property name : GLENLEE**

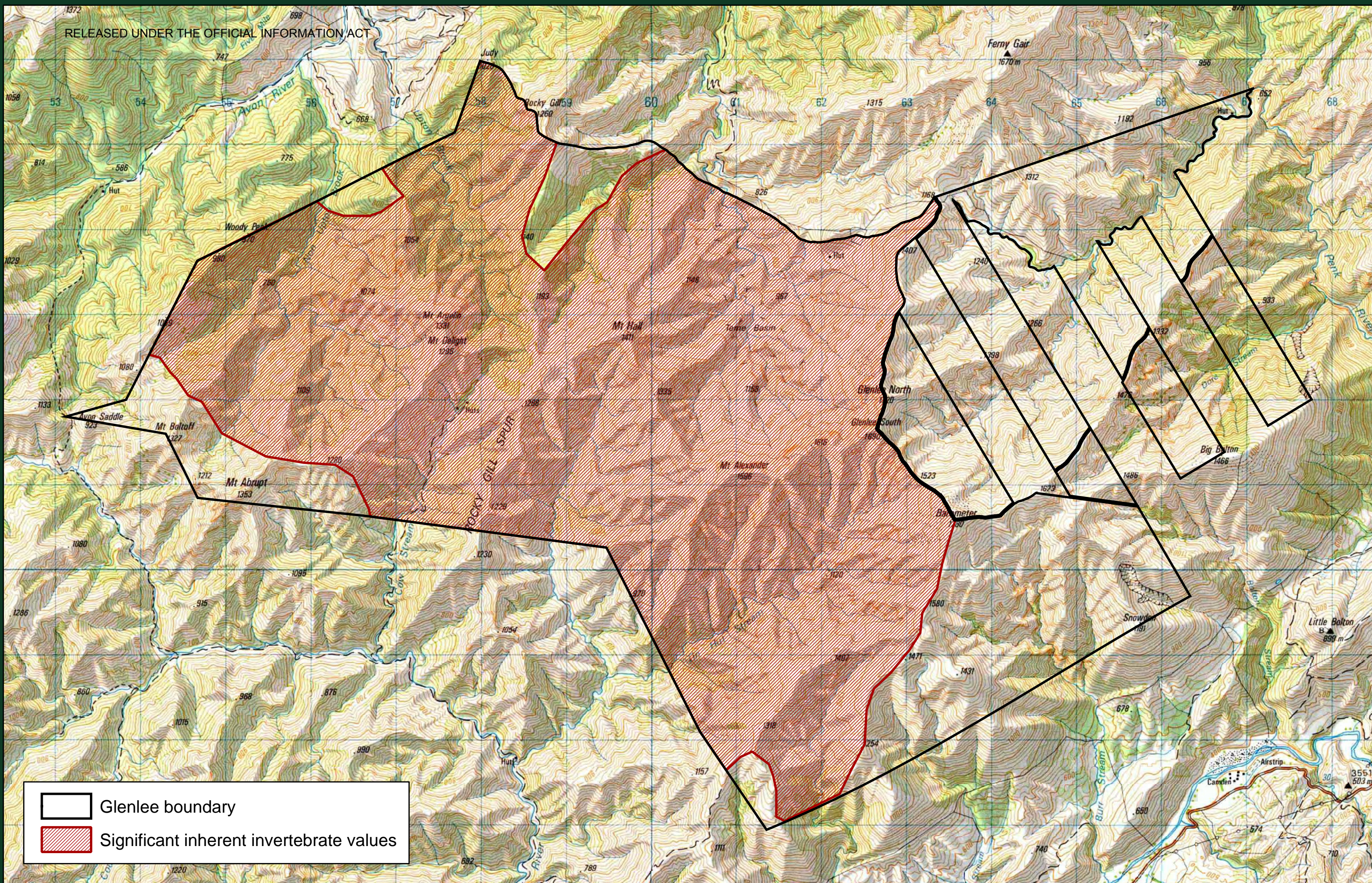
### **Plan attaching to the Conservation Resources Report - Invertebrate Values Map**

The following plan forms page 31 of the Conservation Resources Report provided by the Department of Conservation.



It is released under the Official information Act 1982.

**February**

**07**



Legend:

-  Glenlee boundary
-  Significant inherent invertebrate values

