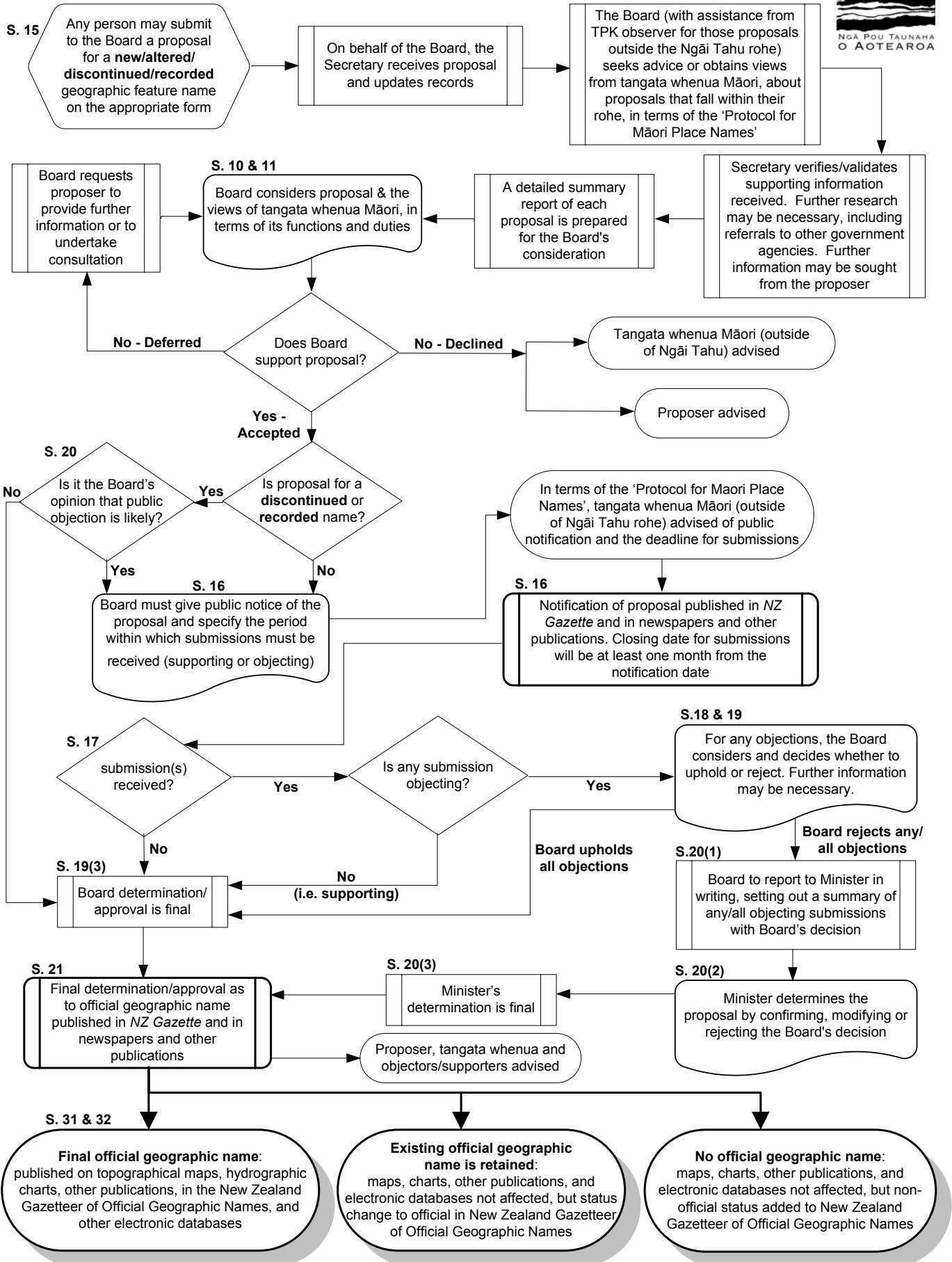
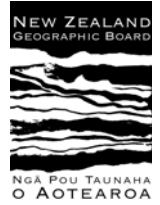


NEW ZEALAND GEOGRAPHIC BOARD (NGĀ POU TAUNAHA O AOTEAROA) ACT 2008

PROCESS FOR NEW ZEALAND OFFICIAL GEOGRAPHIC NAMES

(excluding local authority districts/regions, Crown protected areas, undersea features outside the NZ 12NM territorial limit and Antarctica)



Information available to any person making a proposal includes:

- 1. a proposal form with accompanying guidance notes;*
- 2. a fact sheet;*
- 3. New Zealand Geographic Board (Ngā Pou Taunaha o Aotearoa) Act 2008;*
- 4. naming guidelines;*
- 5. this flow chart; and*
- 6. Protocol for Māori Place Names.*

Consultation:

Any persons making proposals are encouraged to undertake their own consultation (e.g. with the local community or interest groups, Department of Conservation, local iwi, Territorial Authorities, etc).

Documentary evidence of any such consultation should accompany proposals for new/altered/discontinued/approved geographic feature names.

By undertaking consultation, more weight may be added to support the proposal, giving recognition to the appropriate administrative, cultural and heritage aspects, as well as any historical, geographical and/or scientific research undertaken.

Although consultation is not mandatory, it is considered by the Board to be an important step towards determining a new, or altering an existing, or discontinuing an existing, or approving a recorded, geographic feature name.

When a proposal is received, the Board observes a 'Protocol for Māori Place Names', whereby the Board directly seeks the views of tangata whenua Māori in respect to proposals within their rohe.