

# The value of Geospatial Information & the work of Land Information New Zealand

Colin MacDonald  
Chief Executive  
Land Information New Zealand

spatial@gov  
15-16 June 2009  
Canberra



# LINZ's end outcomes

---

- Certainty of property rights
- Best use of Crown assets
- Authoritative land information
- Federated geospatial information

# LINZ's Purpose

- Maintain and build confidence in property rights in land and geographic information
- Encourage land information markets to develop and mature

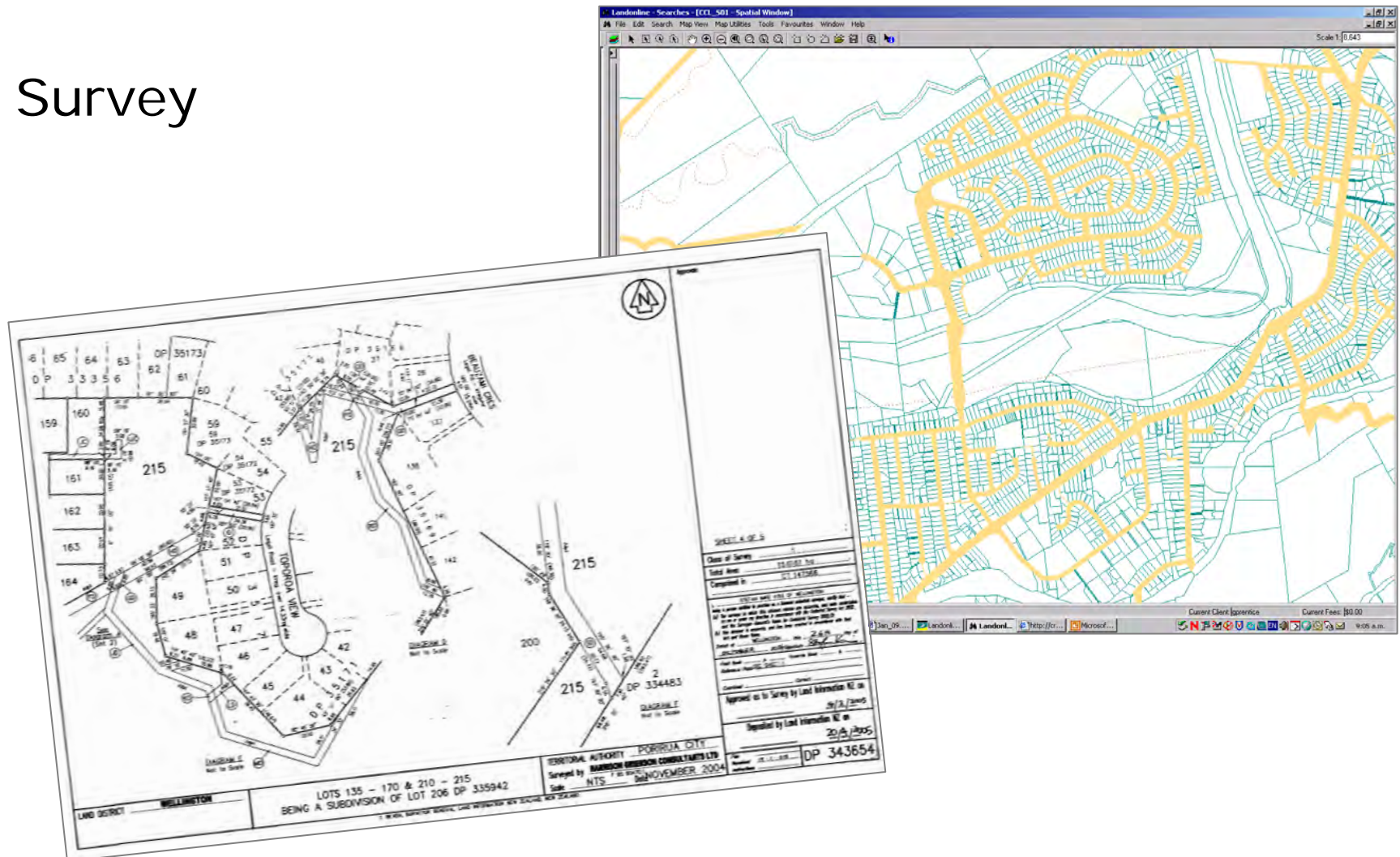


## Geodetic



# LINZ's role...continued

## Survey



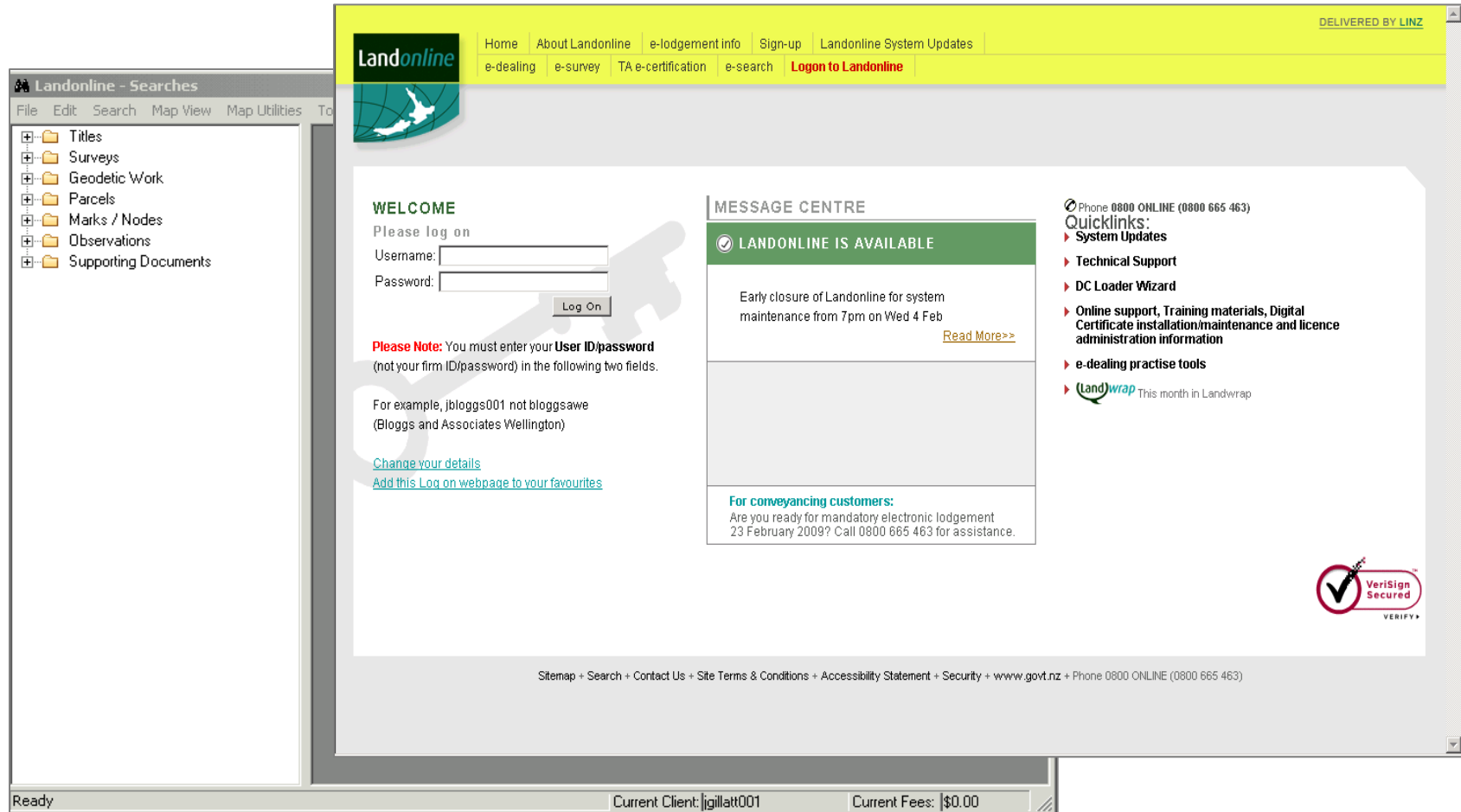
# LINZ's role...continued

## Land Titles



# LINZ's role...continued

## Landonline



The screenshot displays the Landonline web application interface. At the top, a yellow navigation bar contains the Landonline logo and a menu with links: Home, About Landonline, e-lodgement info, Sign-up, Landonline System Updates, e-dealing, e-survey, TA e-certification, e-search, and Logon to Landonline. A 'DELIVERED BY LINZ' badge is in the top right corner. On the left, a sidebar titled 'Landonline - Searches' lists categories: Titles, Surveys, Geodetic Work, Parcels, Marks / Nodes, Observations, and Supporting Documents. The main content area is divided into three sections: 1. 'WELCOME' with a login form (Username and Password fields, Log On button) and a 'Please Note' warning about User ID/password. 2. 'MESSAGE CENTRE' with a green header 'LANDONLINE IS AVAILABLE' and a message about an early closure for system maintenance on Wednesday, February 4th, with a 'Read More' link. 3. 'Quicklinks' listing services like System Updates, Technical Support, DC Loader Wizard, Online support, Training materials, Digital Certificate installation/maintenance and licence administration information, e-dealing practise tools, and (Land)wrap. A 'VeriSign Secured' logo is in the bottom right. The footer contains a site map and contact information. The Windows taskbar at the bottom shows 'Ready', 'Current Client: jgillatt001', and 'Current Fees: \$0.00'.

**Landonline** Home About Landonline e-lodgement info Sign-up Landonline System Updates  
e-dealing e-survey TA e-certification e-search **Logon to Landonline** DELIVERED BY LINZ

**Landonline - Searches**  
File Edit Search Map View Map Utilities To

- Titles
- Surveys
- Geodetic Work
- Parcels
- Marks / Nodes
- Observations
- Supporting Documents

**WELCOME**  
Please log on  
Username:   
Password:

**Please Note:** You must enter your **User ID/password** (not your firm ID/password) in the following two fields.  
For example, jbloggs001 not bloggsawe (Bloggs and Associates Wellington)  
[Change your details](#)  
[Add this Log on webpage to your favourites](#)

**MESSAGE CENTRE**  
**LANDONLINE IS AVAILABLE**  
Early closure of Landonline for system maintenance from 7pm on Wed 4 Feb  
[Read More>>](#)

**For conveyancing customers:**  
Are you ready for mandatory electronic lodgement 23 February 2009? Call 0800 665 463 for assistance.

**Quicklinks:**  
▶ System Updates  
▶ Technical Support  
▶ DC Loader Wizard  
▶ Online support, Training materials, Digital Certificate installation/maintenance and licence administration information  
▶ e-dealing practise tools  
▶ (Land)wrap This month in Landwrap

Phone 0800 ONLINE (0800 665 463)

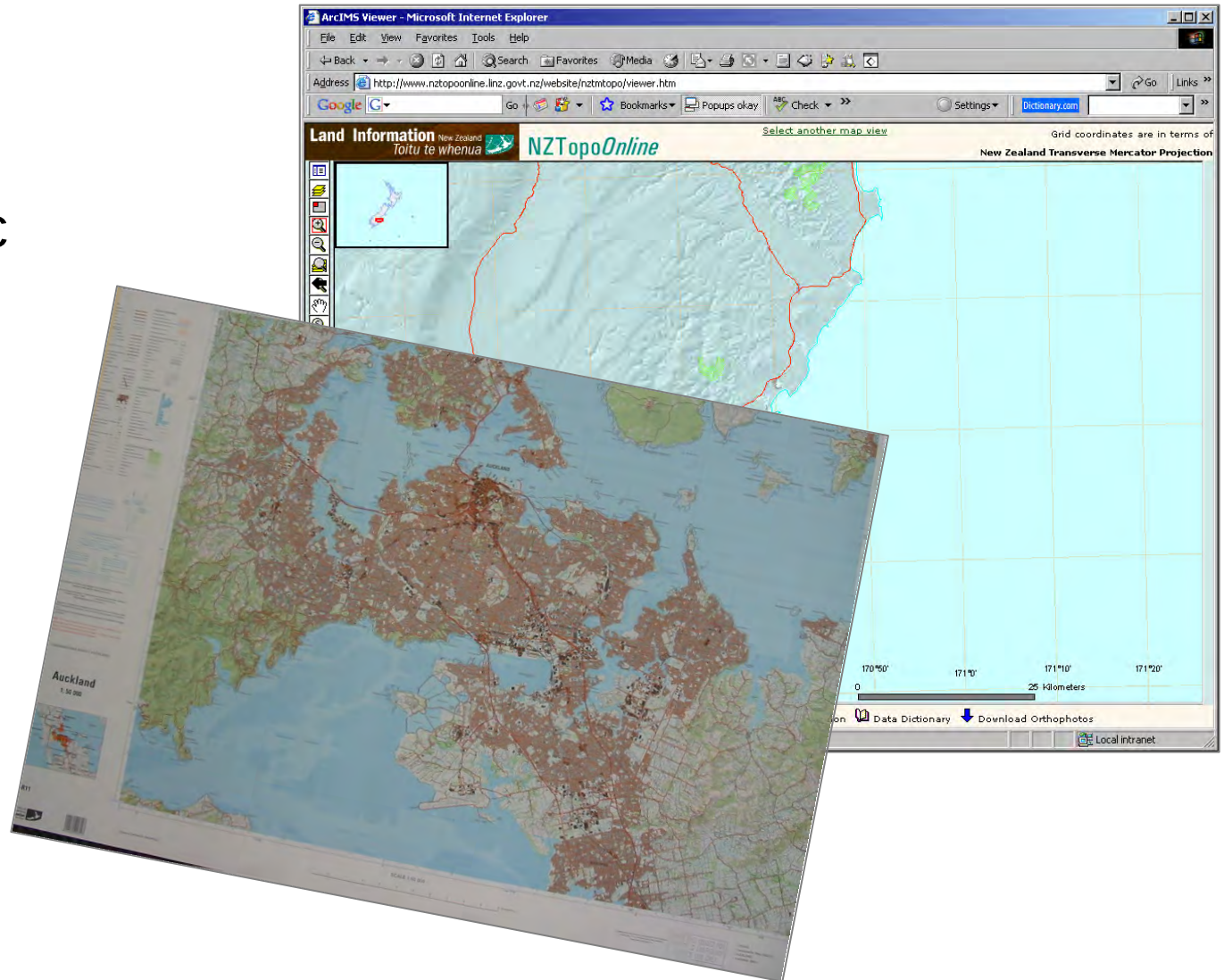
**VeriSign Secured**  
VERIFY

Site map + Search + Contact Us + Site Terms & Conditions + Accessibility Statement + Security + www.govt.nz + Phone 0800 ONLINE (0800 665 463)

Ready Current Client: jgillatt001 Current Fees: \$0.00

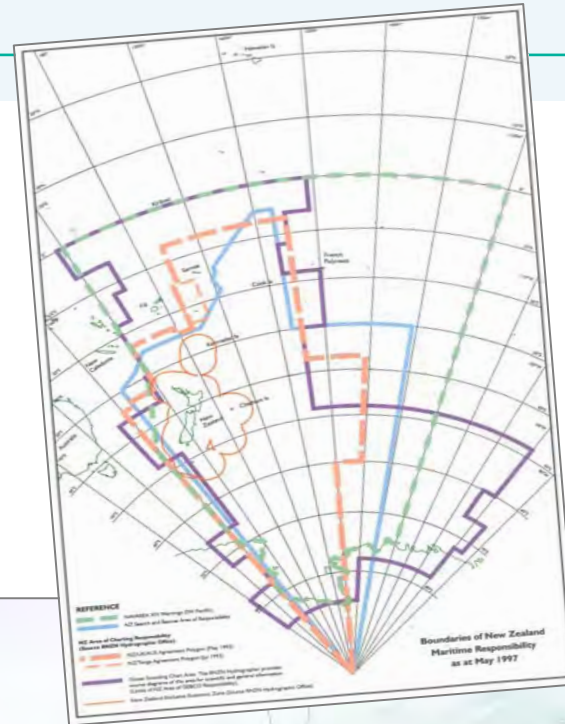
# LINZ's role...continued

Topographic  
Information

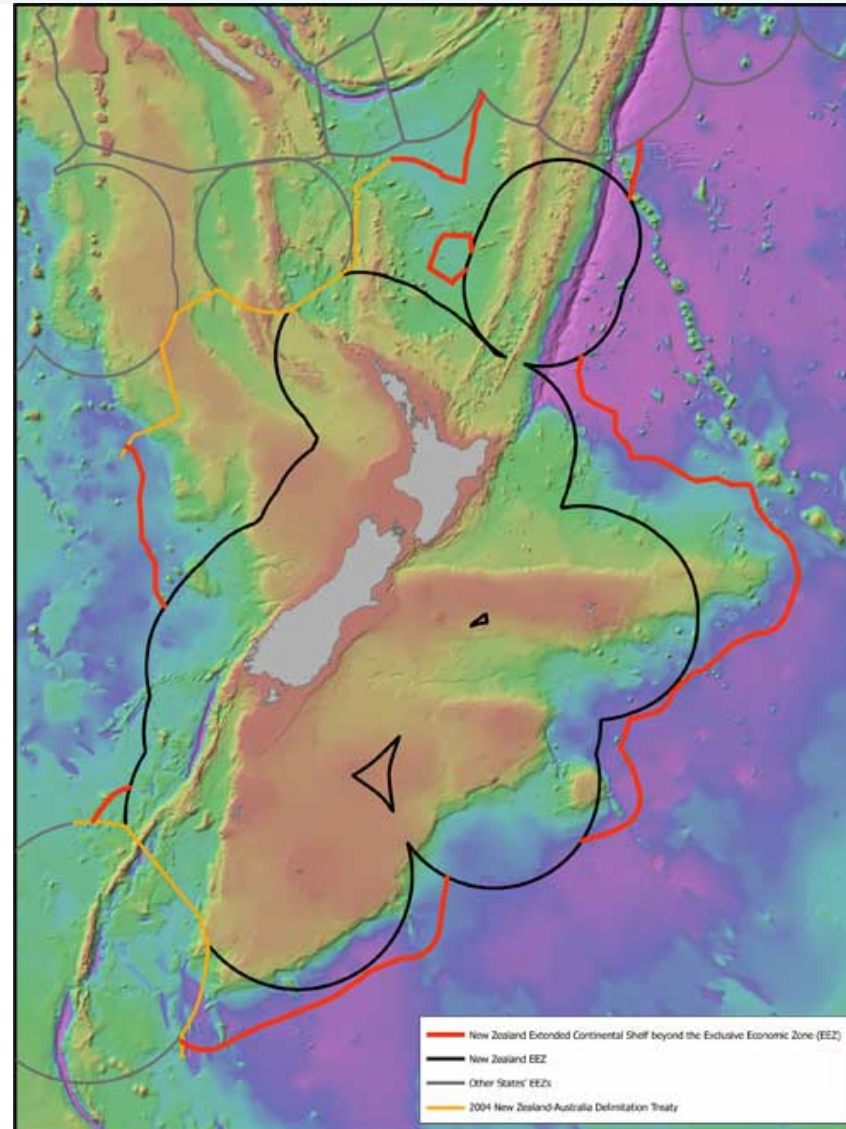


# LINZ's role...continued

## Hydrographic Information



# LINZ's role...continued



# Geospatial Sector in NZ

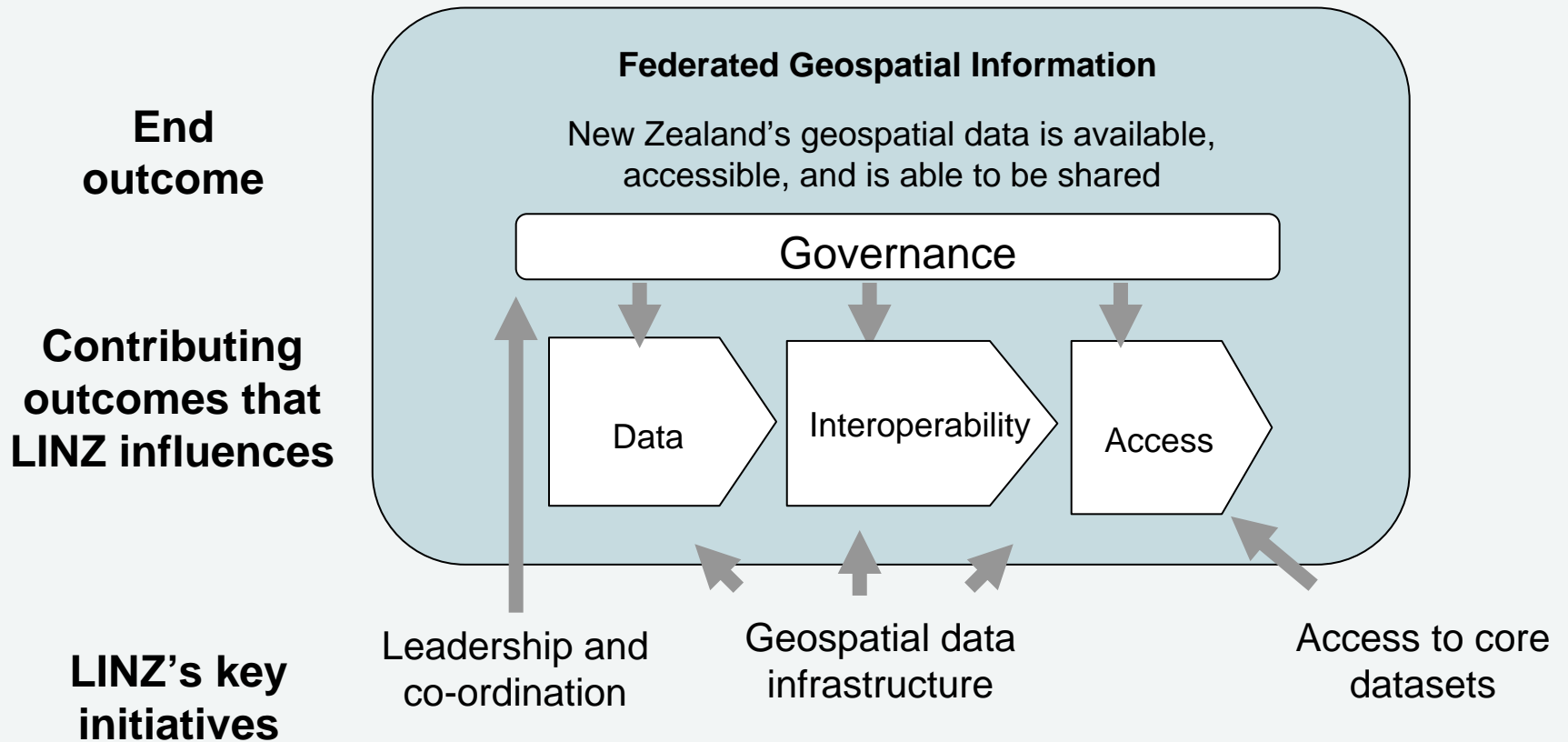
---

- Making sound decisions
- Growing productivity
- Improving services

Trusted geospatial information that is available, accessible, able to be shared and used to support the:

- Safety and security of New Zealand
- Growth of an inclusive, innovative economy
- Preservation and enhancement of our society, culture and environment.

# NZ Geospatial Strategy - Goals



# NZ Geospatial Strategy - Governance

## Geospatial Strategy Governance Structure



- Standards
- Economics study – value of spatial information to NZ economy
  - preliminary results

# Challenges faced by the sector

---

- Leadership & a culture of cooperation
- Awareness
- Capability