

LINZ's Strategic Direction

Colin MacDonald

NZIS Conference

15 October 2009





Key achievements - a world class system...

- We achieved 100% e-lodgement
- Significant enhancements planned for *e-survey*
- New Rules for Cadastral Survey 2010
- Benefits still being realised.

... and the time is right to review our strategic direction...

- Review the strategic planning process
- There are four key outcomes:
 - Certainty of property rights
 - Authoritative land information
 - Federated geospatial information
 - Best use of Crown assets



...to future proof the cadastral surveying and conveyancing industries...

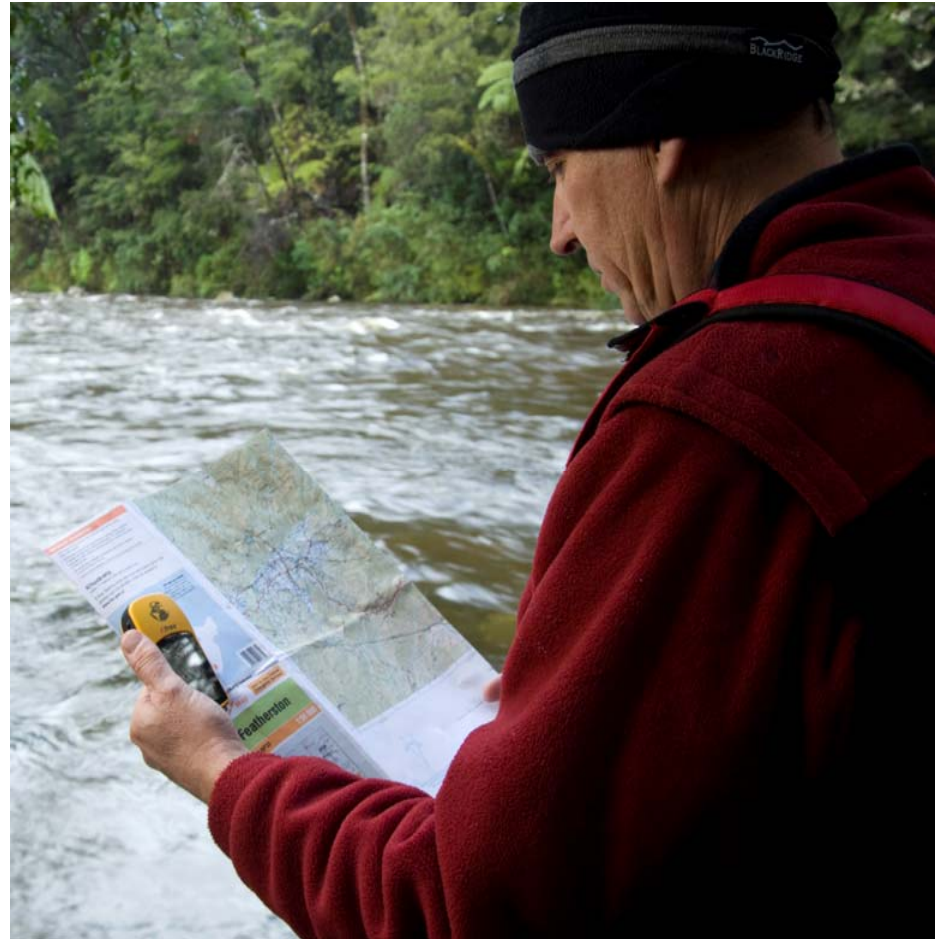
- Certainty of property rights
 - Preparing ourselves for tomorrow's land development markets
 - Realising the benefits of mandatory e-lodgement
 - Future proofing property rights regulatory framework
 - Encouraging overseas investment in New Zealand.



...and re-invent our capability and delivery in authoritative land information...

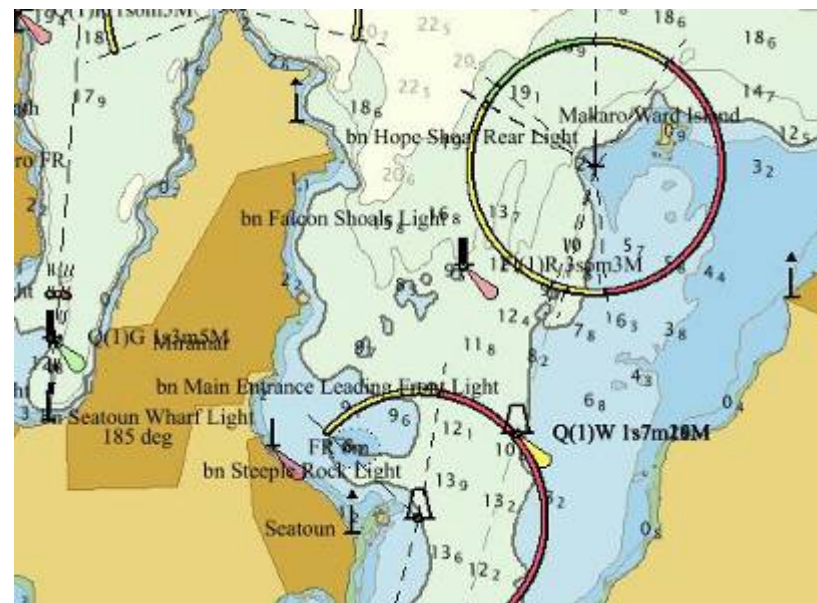
Authoritative land information

- New Topo 50 map series
- World first project
- More efficient data maintenance and information



...so that it is real-time, up to date and relevant.

- CORS network
- Electronic Navigational Charts.



...by maximising and making available
NZ's fundamental data sets.

- Removing barriers
- Australasian approach
- SIBA



Valuing and treasuring our assets...

- Best use of crown assets
- Pastoral land management
- Biosecurity programme for crown land.



..and working with our customers, stakeholders and the public sector for NZ's economic benefit.

- Focus on delivery of key outcomes
- True collaboration with all sectors – a critical success factor
- Surveyors and those in the Cadastral industry are important to LINZ's long term future.

