

Te taunaha wāhi i te takiwā ki te Moana o Ross i te Tiri o te Moana ki te Tonga

He pūmahara i te matawhenua ki te Tiri o te Moana ki te Tonga te ingoa wāhi, e kōrero ana i ngā mahi a te tangata mai i ngā hōparatanga o ngā tau tōmua ki ngā kitenga pūtaiao o te ao hou.

Ki te tāpae ingoa hou, ki te whakamana rānei i te ingoa kua takoto, whakapā mai koa ki Ngā Pou Taunaha o Aotearoa. Koia nei te whakahaere mana o Aotearoa mō te ingoa wāhi, he taunaha ingoa wāhi te mahi.

He aha i whakamanahia ai te ingoa wāhi i te Tiri o te Moana ki te Tonga?

Ka tautoko te rite tonu me te tautuhi tika i te wāhi i te pūtaiao o te Tiri o te Moana ki te Tonga. Ka āwhina anō te ingoa wāhi mana i te whakaterenga waka me te whaiwhai ake i te mate whawhati tata, tae atu ki te whakamahinga ki te mahere matawhenua me te tūtohi inenga wai. E whakaata ana ēnei i tō tātou tuakiri, e tohu ana anō i te hononga auroa o Aotearoa ki taua takiwā.

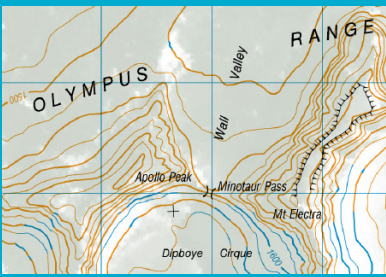
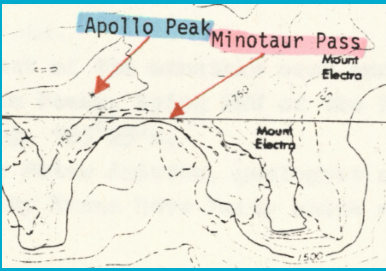
Ka tāpaea ā-tuihonotia e mātou ngā pārongo mana mō ō tātou ingoa wāhi mā roto i te **New Zealand Gazetteer**. Ka tāpaea anō e mātou ō tātou ingoa mana ki te **SCAR Composite Gazetteer** of Antarctica o te ao, kia āta mōhiotia ai e ētahi atu whenua e mahi ana i taua takiwā.



Pouwhenua i Scott Base (NZ) - nā Ash Cotter

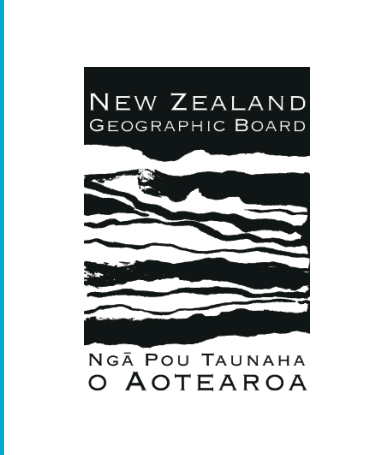


Trevor Chinn i Biker Glacier - nā Jane Forsyth, i tāia ki te NZ Antarctic Society Bulletin v.13 no.1



Minotaur Pass, Olympus Range – nā C. Monteith, Department of Scientific and Industrial Research

LINZ AntTopo50-ME07, manatārua nā te Karauna



Ka taea e te tangata noa te tāpae ingoa

Ka whakatenatena mātou i te tāpaenga:

- e hāngai ana ki Aotearoa
- e whakaata ana i ngā kitenga pūtaiao i te Tiri o te Moana ki te Tonga
- e whakamahara ana i tētahi kaupapa
- e motuhake ana ōna whakamārama
- e whakanui ana i te tangata e hira ana tā rātou i mahi ai mā Aotearoa i te Tiri o te Moana ki te Tonga

He aha ngā mea ka taea te taunaha?

Ngā wāhi matawhenua pērā i te:

- wāhi
- wāhi hītori
- maunga
- whārua
- awa kōpaka
- toka tūtahi
- kūrae
- tuaka
- auhuka
- whanga
- roto kei raro
- kōpakatanga
- manga
- tara pōhatu
- kahiwi tio

Whakapā mai ki a mātou

Īmēra: nzgbenquiries@linz.govt.nz

Waea: 0800 655 463

Mēra: Hēkeretari mō Ngā Pou Taunaha o Aotearoa,
c/- Land Information New Zealand,
155 The Terrace,
PO Box 5501, Te Whanga-nui-a-Tara 6145

Pārongo kē atu

www.linz.govt.nz/antarctic-names#propose
www.gazetteer.linz.govt.nz