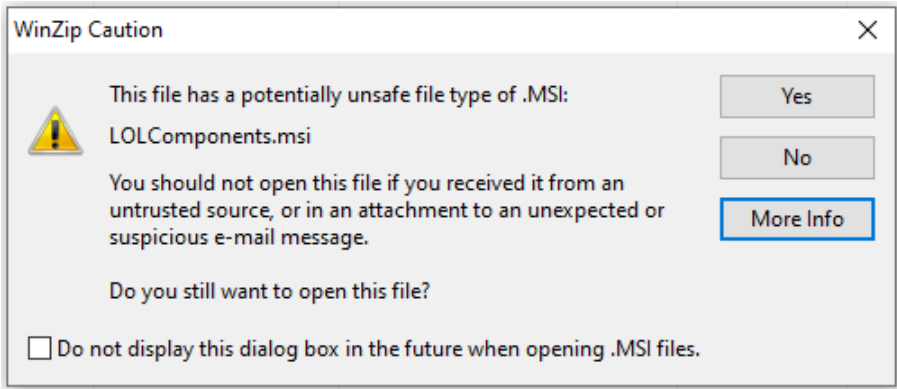
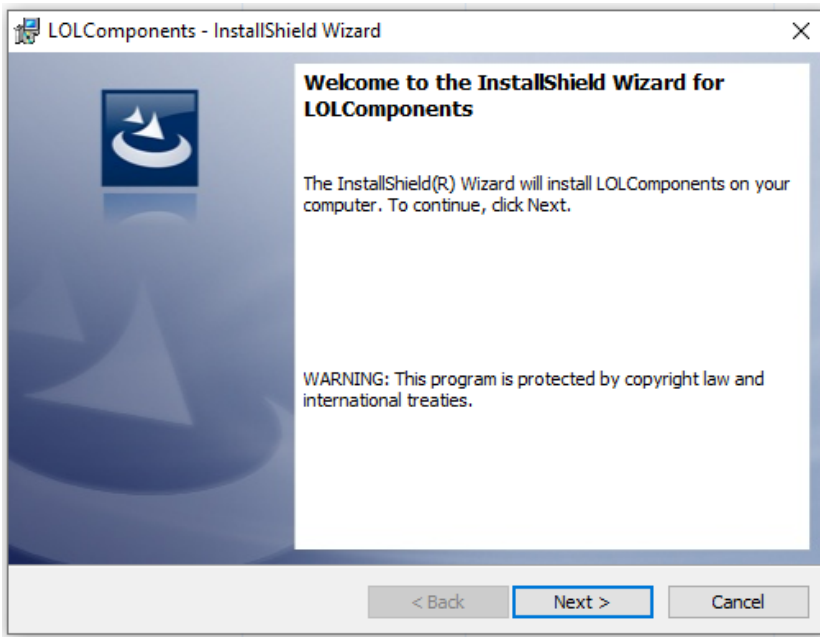


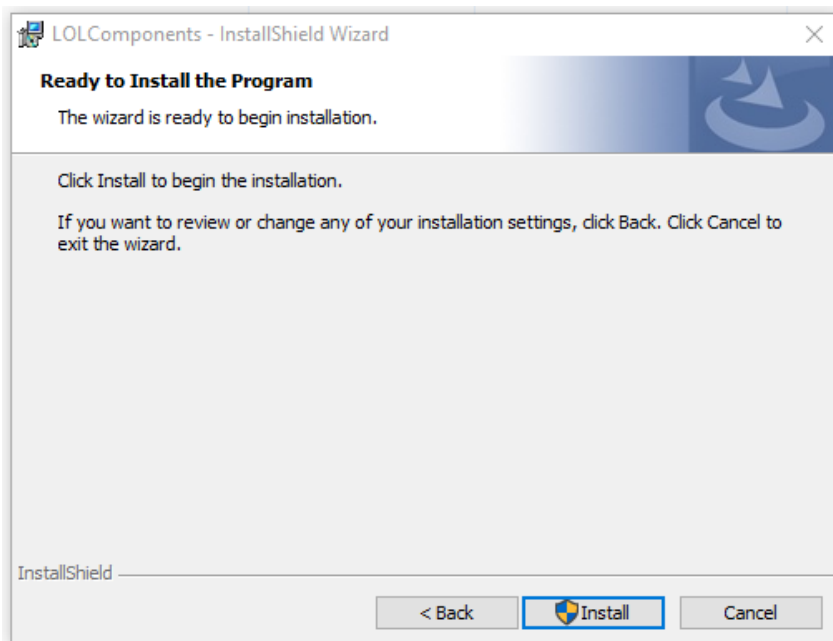
How to Install Landonline Client Components	
Purpose	Install the Landonline Client Components. These are required for running Landonline.
Step	Description
1	<ul style="list-style-type: none">CLICK to download Landonline Client Components (zip 227KB)
2	<ul style="list-style-type: none">A <i>File Download</i> screen will appearChoose an appropriate file location where the download can be saved (note the location and filename)
Note	We recommend saving to an appropriate file location, so you will not need to download the installation file a second time.
3	<ul style="list-style-type: none">Open the file from the new file location
Alert	You must log in with Administrator rights for this installation
4	<ul style="list-style-type: none">If prompted with the <i>Caution</i> screen, click Yes to install, and run Landonline client components 

- Click **Next** on the *Welcome InstallShield Wizard* screen

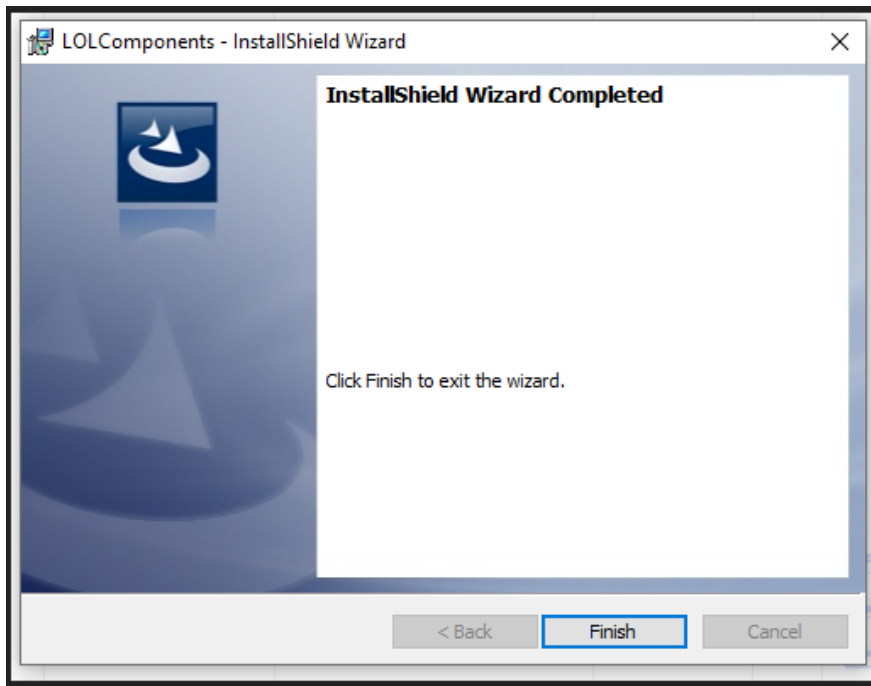


5

- Click **Install** and log in with Administrator rights for the installation



- Click **Finish** to exit the installation of Landonline client components



6

Continue to Step 4: [Digisign2 download and installation instructions \(for signing customers only\)](#)

Continue to Step 5: [Landonline Print-to-TIFF Driver download and installation](#)