







Awapiri - Clear Scrub

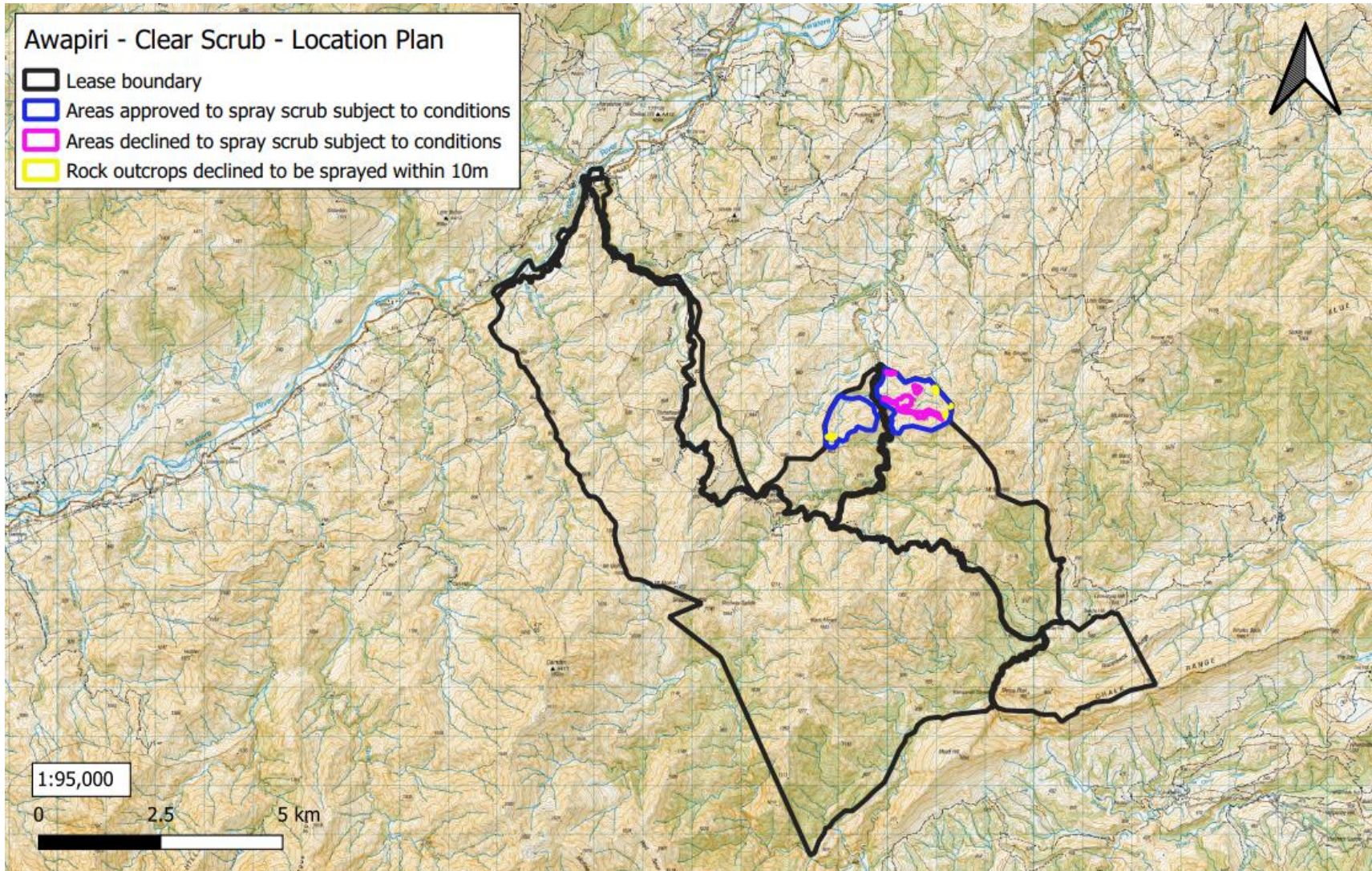
- Lease boundary
- Areas approved to spray scrub subject to conditions
- Areas declined to spray scrub subject to conditions
- Rock outcrops declined to be sprayed

SETBACKS:
 Medway River - 50m
 Wetlands - 10m
 Waterways - 5m subject to conditions
 Rock outcrops outlined in yellow - 10m

	Lease Registration Reference: 12634 / Pm016	Run Name: Awapiri	Version date: 23/5/2022	Version:					
	Land District: Marlborough Land District	Boundary sourced from LINZ Data Service	Sheet 1 of 2	1	2	3	4	5	

Awapiri - Clear Scrub - Location Plan

-  Lease boundary
-  Areas approved to spray scrub subject to conditions
-  Areas declined to spray scrub subject to conditions
-  Rock outcrops declined to be sprayed within 10m



Lease Registration Reference: 12634 / Pm016

Run Name: Awapiri

Version date: 23/5/2022

Version:



Land District: Marlborough Land District

Boundary sourced from LINZ Data Service

Sheet 2 of 2

1	2	3	4	5
---	---	---	---	---