



Record of Survey - DP 515602

Survey Number DP 515602
Surveyor Reference SJ & FJ Hawke 169884/01
Surveyor Andrew Scott Rabbidge
Survey Firm Milward Finlay Lobb Ltd
Surveyor Declaration I Andrew Scott Rabbidge, being a licensed cadastral surveyor, certify that--
(a) this dataset provided by me and its related survey are accurate, correct and in accordance with the Cadastral Survey Act 2002 and Cadastral Survey Rules 2021; and
(b) the survey was undertaken by me or under my personal direction.
Declared on 09 Jan 2023 10:54 AM

Survey Details

Dataset Description Lots 1 & 2 Being Subdivision of Lot 1 DP 19265
Purpose LT Subdivision
Status Deposited **Type** Survey
Land District Canterbury **Survey Class** Class B
Meridional Circuit Timaru 2000 **Vertical Datum** None

Survey Dates

Surveyed Date 28/08/2017 **Certified Date** 09/01/2023
Submitted Date 09/01/2023 10:54:00 **Survey Approval Date** 16/01/2023
Deposit Date 01/02/2023

Referenced Surveys

Survey Number	Land District	Bearing Correction
DP 19265	Canterbury	0°01'50"
SO 2279	Canterbury	
SO 8038	Canterbury	
DP 11218	Canterbury	
DP 12119	Canterbury	

Territorial Authorities

Waimate District

Comprised In

RT CB826/59

Created Parcels

Parcels	Parcel Intent	Area	RT Reference
Lot 1 Deposited Plan 515602	Fee Simple Title	5.7000 Ha	802212
Lot 2 Deposited Plan 515602	Fee Simple Title	49.4700 Ha	802213
Total Area		<u>55.1700 Ha</u>	

Mark and Vector

Survey Number DP 515602

Meridional Circuit Timaru 2000

From	To	Code	Bearing	Adpt Surv	Bearing Correction	Distance	Adpt Surv	Class
PEG LXI DP 19265	IS LIX DP 19265	ob0	26°20'00"	A DP 19265	0°01'50"	222.75 C		Class BD
IT XL DP 19265	IT LI DP 19265	ob38	296°18'10"	A DP 19265	0°00'00"	896.83 A DP 19265		Class B
IT LI DP 19265	POST DP 19265	ob4	296°07'00"	A DP 19265	0°00'00"	101.45 A DP 19265		Class B
POST DP 19265	PEG XXXIVa DP 19265	ob5	26°24'00"	A DP 19265	0°00'00"	344.74 A DP 19265		Class B
PEG XXXIVa DP 19265	PEG DP 19265	ob6	98°10'20"	A DP 19265	0°00'00"	193.40 A DP 19265		Class B
PEG DP 19265	PEG DP 19265	ob7	209°57'00"	A DP 19265	0°00'00"	61.38 A DP 19265		Class B
PEG DP 19265	PEG DP 19265	ob8	112°47'00"	A DP 19265	0°00'00"	215.17 A DP 19265		Class B
PEG DP 19265	PEG DP 19265	ob9	159°27'00"	A DP 19265	0°00'00"	262.81 A DP 19265		Class B
PEG DP 19265	PEG DP 19265	ob10	105°03'00"	A DP 19265	0°00'00"	275.60 A DP 19265		Class B
PEG DP 19265	PEG DP 19265	ob11	143°23'00"	A DP 19265	0°00'00"	106.64 A DP 19265		Class B
PEG DP 19265	PEG DP 19265	ob12	76°47'00"	A DP 19265	0°00'00"	192.66 A DP 19265		Class B
PEG DP 19265	PEG DP 19265	ob13	179°14'00"	A DP 19265	0°00'00"	296.34 A DP 19265		Class B
PEG DP 19265	PEG DP 19265	ob14	124°01'30"	A DP 19265	0°00'00"	378.56 A DP 19265		Class B
PEG DP 19265	PEG DP 19265	ob15	90°49'00"	A DP 19265	0°00'00"	201.71 A DP 19265		Class B
PEG DP 19265	PEG DP 19265	ob16	164°29'00"	A DP 19265	0°00'00"	196.18 A DP 19265		Class B
PEG DP 19265	PEG DP 19265	ob17	105°45'20"	A DP 19265	0°00'00"	169.44 A DP 19265		Class B
PEG DP 19265	POST DP 19265	ob18	188°59'30"	A DP 19265	0°00'00"	124.70 A DP 19265		Class B
POST DP 19265	POST XXII DP 19265	ob19	296°20'00"	A DP 19265	0°00'00"	49.55 A DP 19265		Class B
POST XXII DP 19265	PEG XXIII DP 19265	ob20	291°18'00"	A DP 19265	0°00'00"	65.84 A DP 19265		Class B
PEG XXIII DP 19265	POST XXIV DP 19265	ob21	282°00'00"	A DP 19265	0°00'00"	108.91 A DP 19265		Class B
POST XXIV DP 19265	PEG XXVI DP 19265	ob22	286°05'00"	A DP 19265	0°00'00"	42.14 A DP 19265		Class B
PEG XXVI DP 19265	PEG XXVI DP 19265	ob23	301°35'00"	A DP 19265	0°00'00"	31.64 A DP 19265		Class B
PEG XXVI DP 19265	POST XXVII DP 19265	ob24	223°27'00"	A DP 19265	0°00'00"	51.72 A DP 19265		Class B
POST XXVII DP 19265	POST XXVIII DP 19265	ob25	297°06'00"	A DP 19265	0°00'00"	20.70 A DP 19265		Class B
POST XXVIII DP 19265	PEG XXIX DP 19265	ob26	277°25'00"	A DP 19265	0°00'00"	64.15 A DP 19265		Class B
IT XXXI DP 19265	PEG SO 2279	ob30	306°07'00"	M		0.10 M		Class B
PEG 103 DP 515602	UNMK DP 19265	ob29	306°07'00"	C		59.22 C		Class BD
PEG 101 DP 515602	PEG 102 DP 515602	ob36	130°06'00"	C		319.77 C		Class B
PEG 102 DP 515602	PEG 103 DP 515602	ob28	174°25'00"	C		155.45 C		Class B
PEG SO 2279	PEG 103 DP 515602	ob27	306°07'00"	M		11.19 M		Class B

Mark and Vector

Survey Number DP 515602

Meridional Circuit Timaru 2000

From	To	Code	Bearing	Adpt Surv	Bearing Correction	Distance	Adpt Surv	Class
IT XXXI DP 19265	IT LXIV DP 19265	ob34	190°10'00"	M		176.27 M		
PEG SO 2279	PEG 101 DP 515602	ob2	206°20'00"	A DP 19265	0°01'50"	10.00 C		Class B
PEG SO 2279	IS 1 DP 515602	ob3	296°18'10"	A DP 19265	0°00'00"	26.45 A DP 19265		Class B
IT XL DP 19265	IS 1 DP 515602	ob37	116°18'10"	M		51.38 M		Class B
IT XL DP 19265	PEG 101 DP 515602	ob39	123°38'00"	M		78.46 M		
IT XL DP 19265	X (Waimate SD)	ob40	13°02'00"	M		211.75 M		
IT XL DP 19265	IS LIX DP 19265	ob41	188°19'50"	M		251.84 M		
IS LIX DP 19265	IT LXIV DP 19265	ob43	134°37'20"	M		477.07 M		
IT LXIV DP 19265	IT XX DP 19265	ob35	90°36'20"	M		238.38 M		
IT XXXI DP 19265	IT XX DP 19265	ob31	130°20'20"	M		271.93 M		
X (Waimate SD)	IT IV DP 19265	ob42	133°37'30"	M		691.08 M		
IT IV DP 19265	IT XXXI DP 19265	ob45	236°44'00"	M		255.71 M		
IT XXXI DP 19265	PEG 102 DP 515602	ob32	351°28'00"	M		163.16 M		
IT XX DP 19265	PEG XXIX DP 19265	ob46	9°21'00"	A DP 19265	0°00'00"	22.43 A DP 19265		
IS LIX DP 19265	PEG 101 DP 515602	ob44	26°20'00"	A DP 19265	0°01'50"	229.55 C		Class B
IT XXXI DP 19265	PEG XXIX DP 19265	ob33	126°07'00"	C		261.06 C		Class B
PEG LXI DP 19265	UNMK DP 19265	ob1	79°05'00"	C		420.13 C		
IT I DP 12119	IS II DP 11218	ob48	125°23'10"	M		952.83 M		
IT I DP 12119	IT I SO 8038	ob49	305°23'10"	M		492.74 M		
IT I SO 8038	IS LIX DP 19265	ob50	66°16'10"	M		642.57 M		
IS II DP 11218	IT XX DP 19265	ob47	359°04'00"	M		758.15 M		

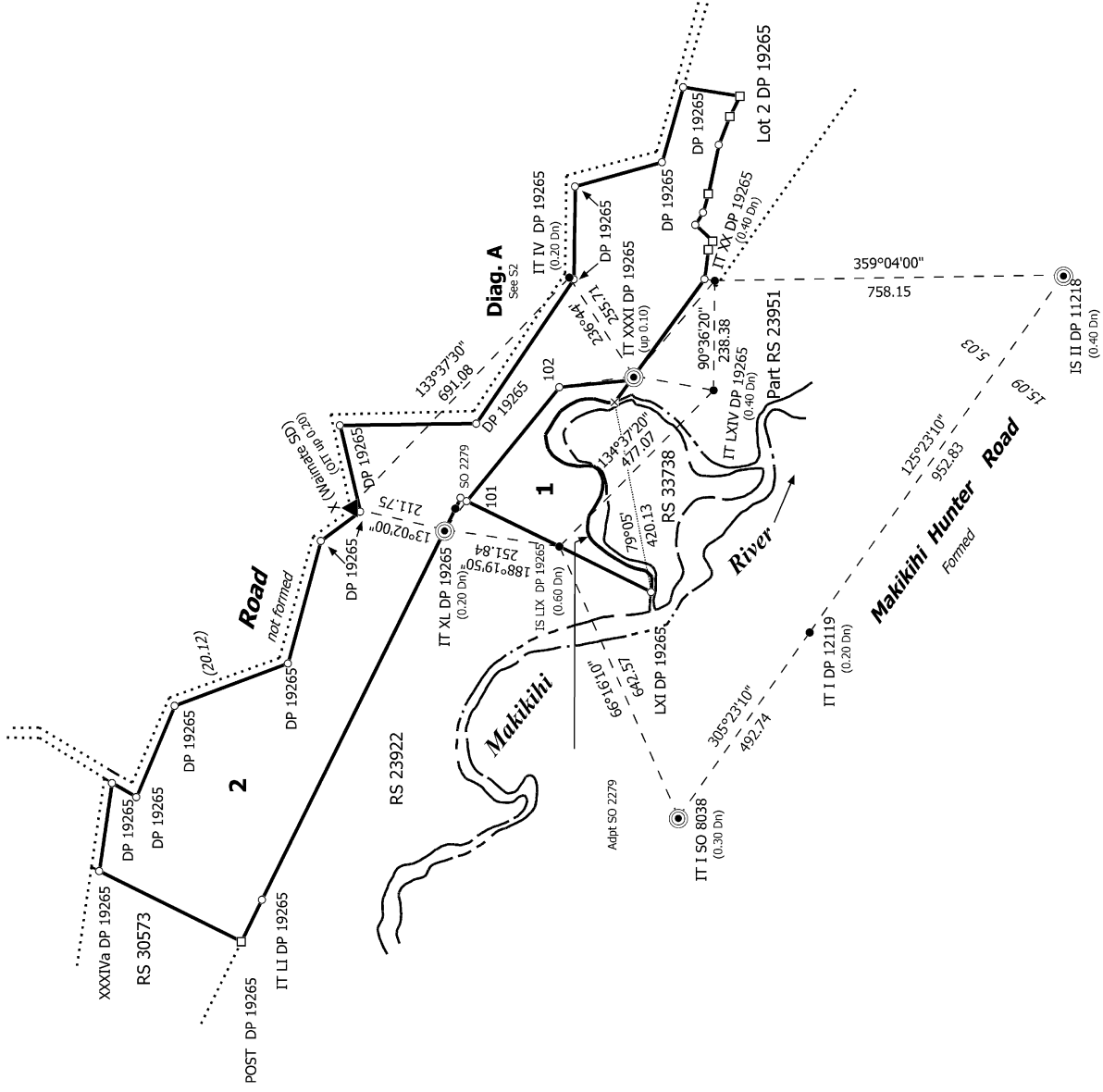
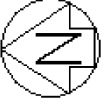
Mark Name	Mark Condition	Description
IS 1 DP 515602		Rust Mk of OIS LIV DP 19265 ren'd by IS 1 0.10 Dn
IS II DP 11218		0.40 Dn
IS LIX DP 19265		0.60 Dn
IT I DP 12119		0.20 Dn
IT I SO 8038		0.30 Dn
IT IV DP 19265		0.20 Dn
IT LXIV DP 19265		0.40 Dn
IT XL DP 19265		0.20 Dn

Mark and Vector

Survey Number DP 515602
Meridional Circuit Timaru 2000

Mark Name	Mark Condition	Description
IT XX DP 19265		0.40 Dn
IT XXXI DP 19265		up 0.10
POST DP 19265		Arrow and Nail
POST XXII DP 19265		Arrow and Nail
X (Waimate SD)		OIT up 0.20

*** End of Report ***



S 1/2

Land District: Canterbury

Digitally Generated Plan

Generated on: 24/02/2023 6:41pm Page 6 of 8

Lots 1 & 2 Being Subdivision of Lot 1 DP 19265

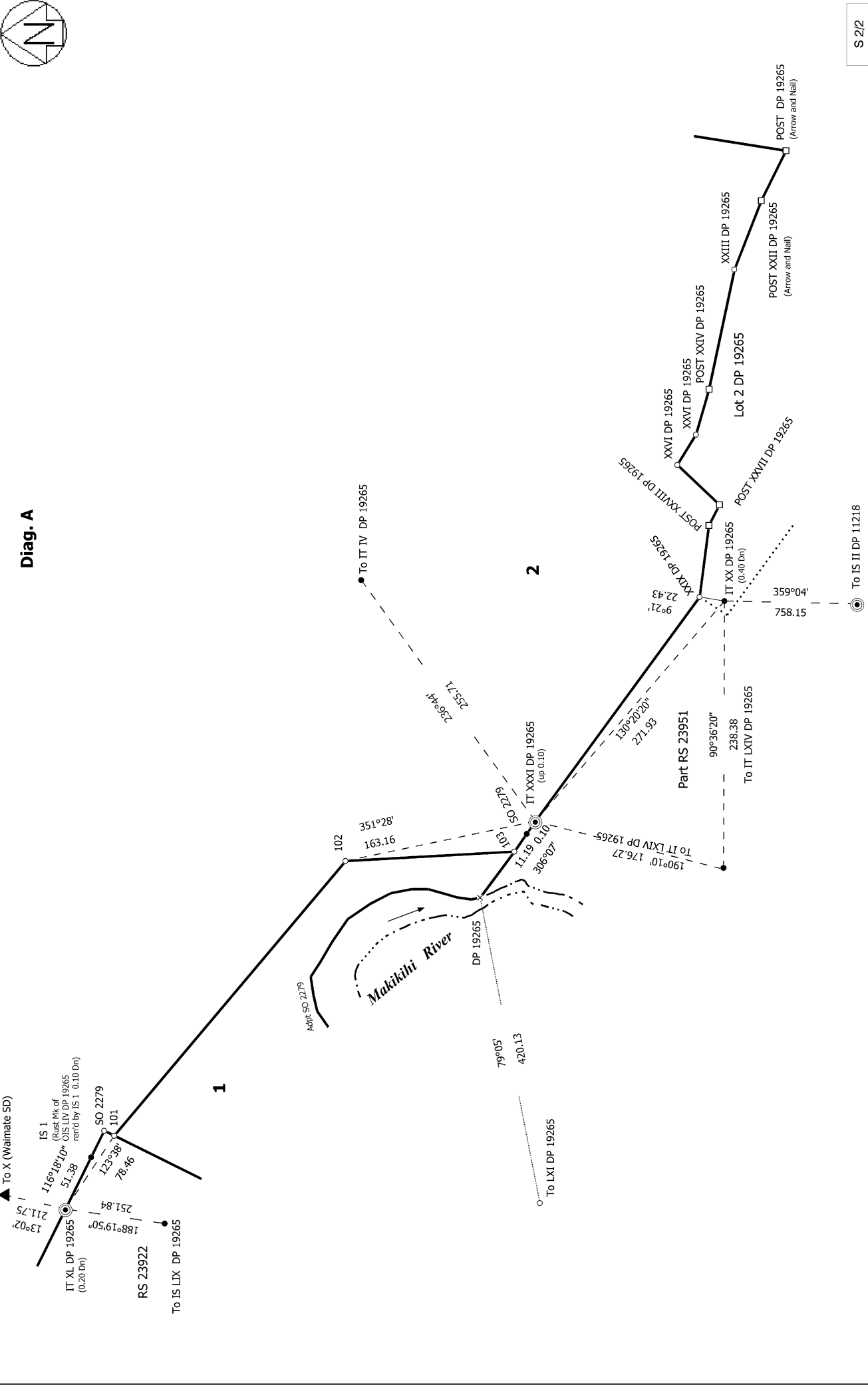
Surveyor: Andrew Scott Rabbidge
 Firm: Milward Finlay Lobb Ltd
 Date of Survey: 28/08/2017

**Record of Survey
 DP 515602**

Deposited on: 1/02/2023



Diag. A



S 2/2

Land District: Canterbury
 Digitally Generated Plan
 Generated on: 24/02/2023 6:41 pm Page 7 of 8

Lots 1 & 2 Being Subdivision of Lot 1 DP 19265

Surveyor: Andrew Scott Rabbidge
 Firm: Milward Finlay Lobb Ltd
 Date of Survey: 28/08/2017

Record of Survey
 DP 515602
 Deposited on: 1/02/2023



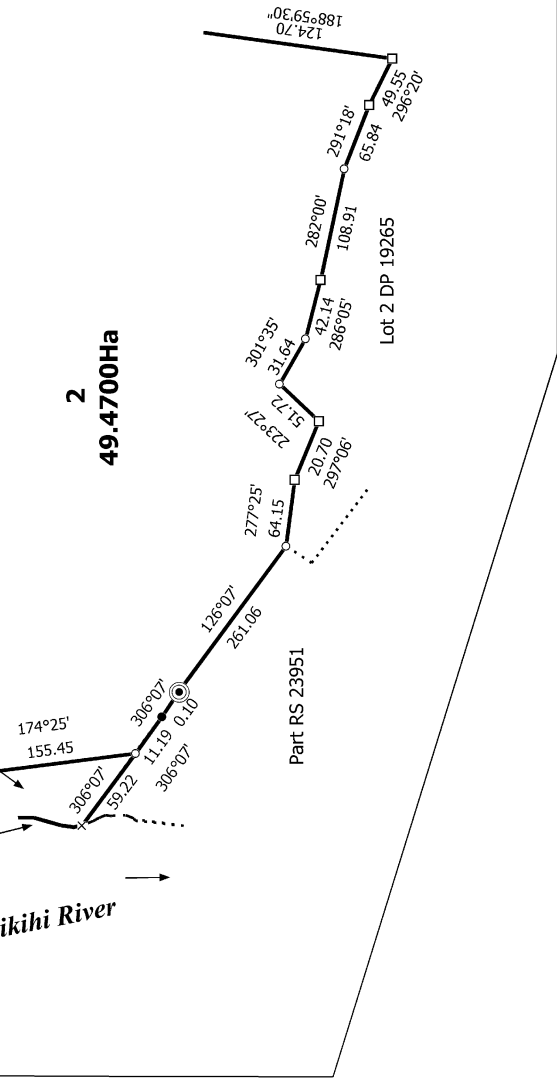
Diag. A

1
5.7000Ha

2
49.4700Ha

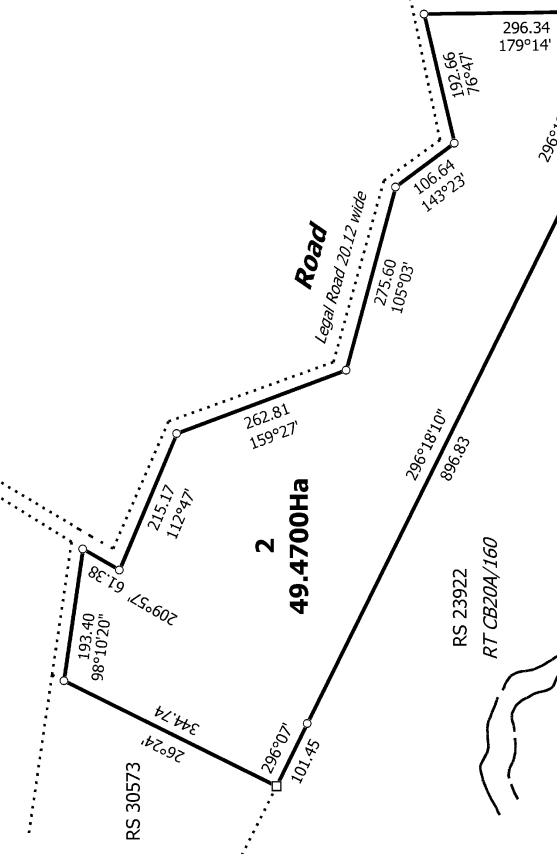
Former water boundary not coincident with water's edge

Makikihi River



Former water boundary not coincident with water's edge

Makikihi River



Amalgamation Condition
That Lot 1 be amalgamated with RS 23922 (RT CB20A/160)
and that one record of title issue.
CSN Request :1520666

T 1/1

Land District: Canterbury	Surveyor: Andrew Scott Rabbidge Firm: Milward Finlay Lobb Ltd Date of Survey: 28/08/2017	Record of Survey DP 515602 Deposited on: 1/02/2023
Lots 1 & 2 Being Subdivision of Lot 1 DP 19265		Digitally Generated Plan Generated on: 24/02/2023 6:41pm Page 8 of 8