



# CSD Plan - DP 540978

---

**Survey Number** DP 540978  
**Surveyor Reference** JN 19/16 Adams  
**Surveyor** Kenneth Frank Thorn  
**Survey Firm** Dagg & Thorn  
**Surveyor Declaration** I Kenneth Frank Thorn, being a licensed cadastral surveyor, certify that:  
(a) this dataset provided by me and its related survey are accurate, correct and in accordance with the Cadastral Survey Act 2002 and the Rules for Cadastral Survey 2010, and  
(b) the survey was undertaken by me or under my personal direction.  
Declared on 04 Feb 2020 09:48 AM

---

## Survey Details

**Dataset Description** Plan of Lots 1 & 2 Being A Subdivision of Lots 1-4 DP 5235, Pt Lot 2 & Lot 3 DP 5001  
**Purpose** LT Subdivision  
**Status** Deposited **Type** Survey  
**Land District** Hawkes Bay **Survey Class** Class A  
**Meridional Circuit** Hawkes Bay 2000 **Vertical Datum** None

---

## Survey Dates

**Surveyed Date** 24/10/2019 **Certified Date** 04/02/2020  
**Submitted Date** 04/02/2020 09:48:07 **Survey Approval Date** 03/03/2020  
**Deposit Date** 12/03/2020

---

## Referenced Surveys

Survey Number	Land District	Bearing Correction
DP 5001	Hawkes Bay	0°00'00"
DP 5235	Hawkes Bay	0°00'00"
SO 8860	Hawkes Bay	0°00'00"
SO 9053	Hawkes Bay	0°00'00"
SO 4973	Hawkes Bay	0°00'00"
DP 10889	Hawkes Bay	0°00'00"
DP 15214	Hawkes Bay	0°00'00"
DP 17390	Hawkes Bay	0°00'00"
DP 21459	Hawkes Bay	0°00'00"
DP 1174	Hawkes Bay	0°00'00"

---

## Territorial Authorities

Wairoa District

---

## Comprised In

RT HB115/268  
RT HBH3/725

---

## Created Parcels

Parcels	Parcel Intent	Area	RT Reference
Lot 1 Deposited Plan 540978	Fee Simple Title	0.0057 Ha	908042

---



# CSD Plan - DP 540978

---

## Created Parcels

Parcels	Parcel Intent	Area	RT Reference
Lot 2 Deposited Plan 540978	Fee Simple Title	0.1608 Ha	908043
Area A Deposited Plan 540978	Easement		
<b>Total Area</b>		<hr/> 0.1665 Ha	

# Mark and Vector

Survey Number DP 540978

Meridional Circuit Hawkes Bay 2000

From	To	Code	Bearing	Adpt Surv	Bearing Correction	Distance	Adpt Surv	Class
IT SO 4973	IS IV DP 15214	ob0	274°13'30"	A SO 8860		13.94 A	SO 8860	
IS IV DP 15214	IT I SO 8860	ob4	185°36'15"	A SO 8860		33.74 A	SO 8860	
IT I SO 8860	IS II SO 8860	ob6	271°50'30"	A SO 8860		53.76 A	SO 8860	
IS II SO 8860	IT III DP 10889	ob7	340°08'30"	A SO 8860		33.34 A	SO 8860	
IT III DP 10889	IS IV DP 15214	ob9	89°35'30"	A SO 8860		68.35 A	SO 8860	
IS II SO 8860	PEG (3) SO 8860	ob8	13°58'00"	A SO 8860		13.76 A	SO 8860	
IT SO 4973	RM B SO 9053	ob1	185°36'15"	M		50.35 M		
RM B SO 9053	RM C SO 9053	ob12	185°36'15"	M		108.72 M		
IT SO 4973	IT I DP 540978	ob2	264°34'00"	M		65.26 M		
IT I DP 540978	IB II DP 540978	ob15	179°46'40"	M		48.78 M		
IB II DP 540978	RM B SO 9053	ob19	85°23'00"	M		60.06 M		
IT I DP 540978	PEG (3) SO 8860	ob16	193°11'00"	M		11.61 M		
IT I DP 540978	PEG 1 DP 540978	ob17	192°32'00"	M		12.73 M		
IT SO 4973	PEG 2 DP 540978	ob3	216°22'00"	M		29.41 M		
IB II DP 540978	POST 3 DP 540978	ob20	307°22'00"	M		7.87 M		
RM B SO 9053	PEG 4 DP 540978	ob13	251°36'00"	M		16.47 M		
IS IV DP 15214	PEG (2) SO 8860	ob5	273°07'00"	A SO 8860		1.10 A	SO 8860	
PEG (2) SO 8860	NAIL (1) SO 8860	ob27	185°36'15"	A SO 8860		23.76 A	DP 1174	
PEG (3) SO 8860	NAIL (1) SO 8860	ob11	95°46'50"	A SO 8860		50.53 A	SO 8860	Class A
PEG 1 DP 540978	PEG 2 DP 540978	ob21	95°46'50"	C		50.54 C		Class A
POST 3 DP 540978	PEG 4 DP 540978	ob24	95°49'30"	C		50.75 C		Class A
PEG 4 DP 540978	UNMK DP 21459	ob26	5°36'15"	A SO 8860		1.61 A	DP 21459	Class A
UNMK DP 21459	UNMK DP 21459	ob28	5°36'15"	A SO 8860		2.00 A	DP 21459	Class A
UNMK DP 21459	UNMK DP 21459	ob29	275°44'37"	A DP 21459		3.00 A	DP 21459	Class A
UNMK DP 21459	UNMK DP 21459	ob31	5°36'00"	A DP 21459		2.00 A	DP 21459	Class A
UNMK DP 21459	UNMK DP 21459	ob32	95°44'37"	A DP 21459		3.00 A	DP 21459	Class A
UNMK DP 21459	PEG 2 DP 540978	ob30	5°36'15"	A SO 8860		28.17 C		Class A
PEG 2 DP 540978	NAIL (1) SO 8860	ob23	5°36'15"	A SO 8860		1.13 C		Class A
POST 3 DP 540978	PEG 1 DP 540978	ob25	5°57'40"	A DP 10889		31.74 C		Class A

# Mark and Vector

Survey Number DP 540978

Meridional Circuit Hawkes Bay 2000

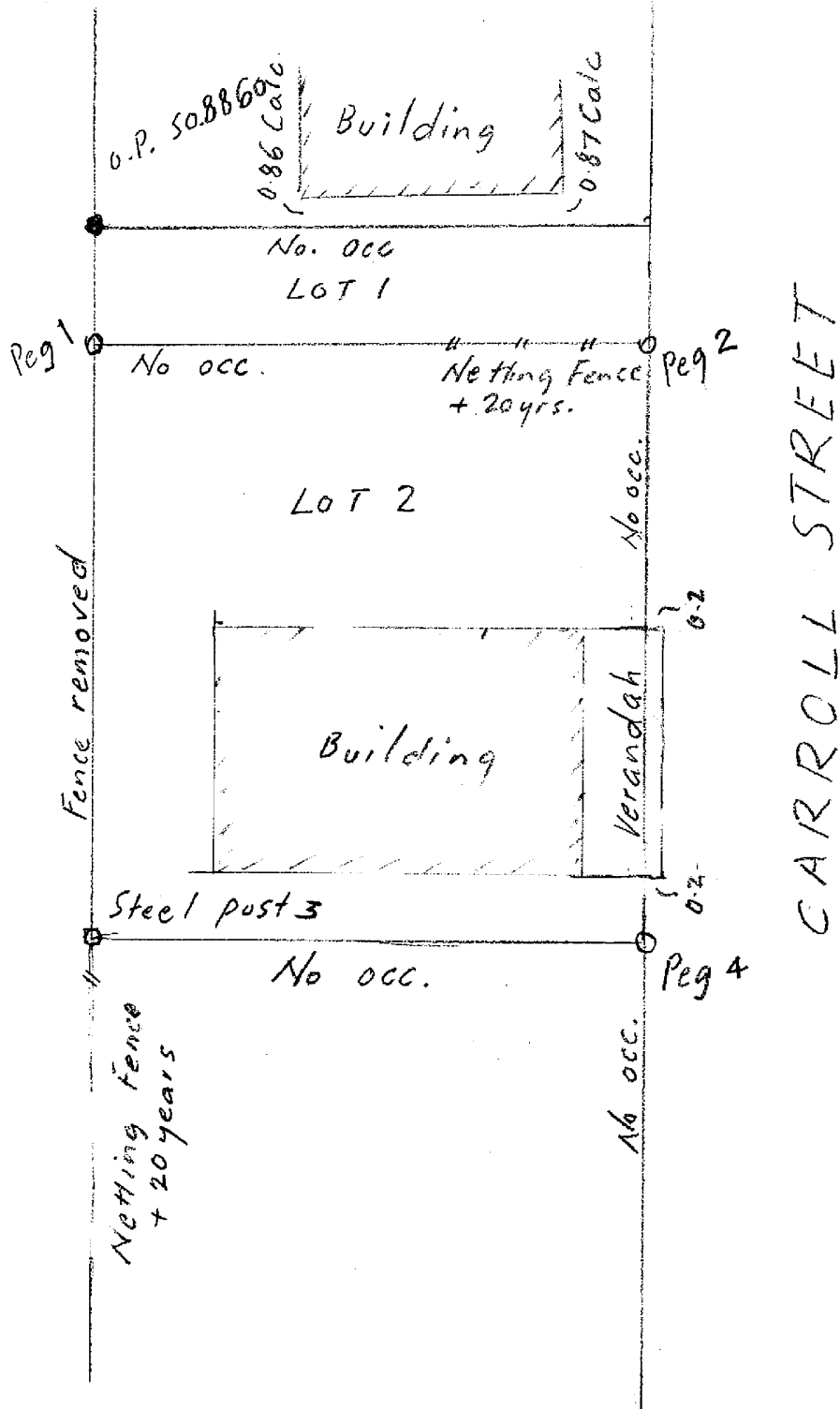
From	To	Code	Bearing	Adpt Surv	Bearing Correction	Distance	Adpt Surv	Class
PEG 1 DP 540978	PEG (3) SO 8860	ob22	5°57'40"	A DP 10889		1.14 C		Class A
RM B SO 9053	PEG DP 5001	ob14	241°01'00"	A SO 4973		18.28 A	SO 4973	
PEG DP 5001	PEG 4 DP 540978	ob33	5°36'15"	A SO 8860		3.67 C		
IT III DP 10889	PEG SO 8860	ob10	70°57'00"	A SO 8860		18.13 A	SO 8860	
PEG SO 8860	PEG (3) SO 8860	ob34	185°57'40"	A DP 10889		24.06 A	DP 1174	
IT I DP 540978	IT III DP 10889	ob18	291°12'00"	M		18.54 M		

Mark Name	Description
IB II DP 540978	Flush in compacted gravel
IT I DP 540978	Flush in compacted gravel
IT SO 4973	N/A

\*\*\* End of Report \*\*\*

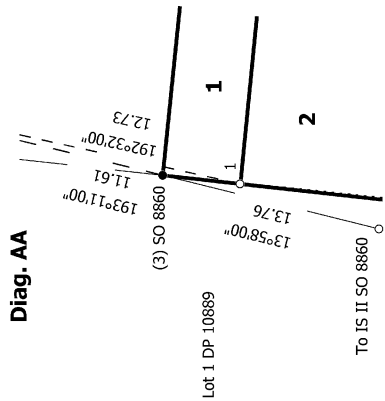
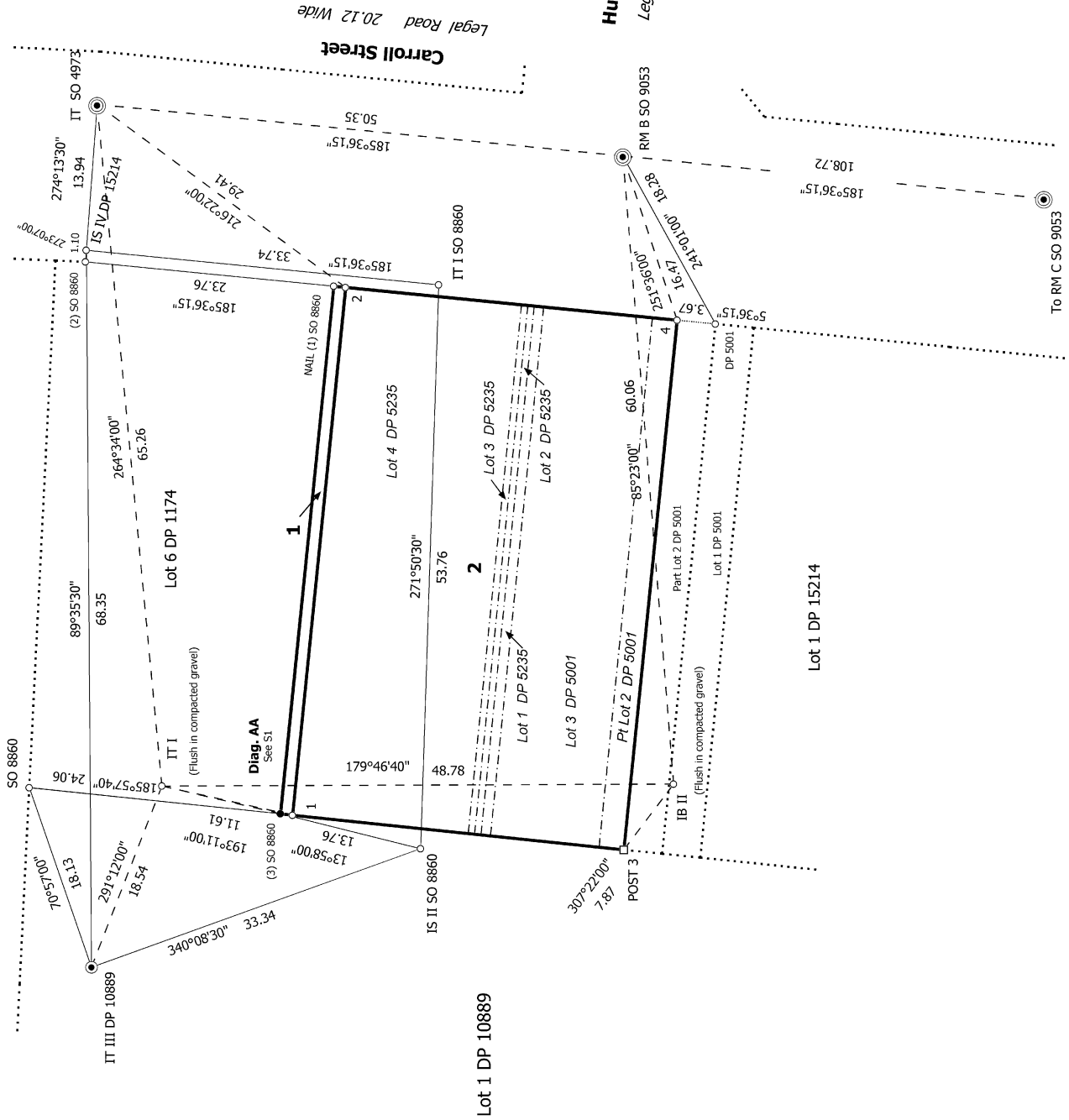
SCHEDULE OF EXISTING EASEMENTS IN GROSS			
PURPOSE	SERVIENT TEN (Burdened land)	SHOWN	SPECIFIED IN
Right to convey underground electric power	Lot 2	A	T. 552009.1

# OCCUPATION DIAGRAM





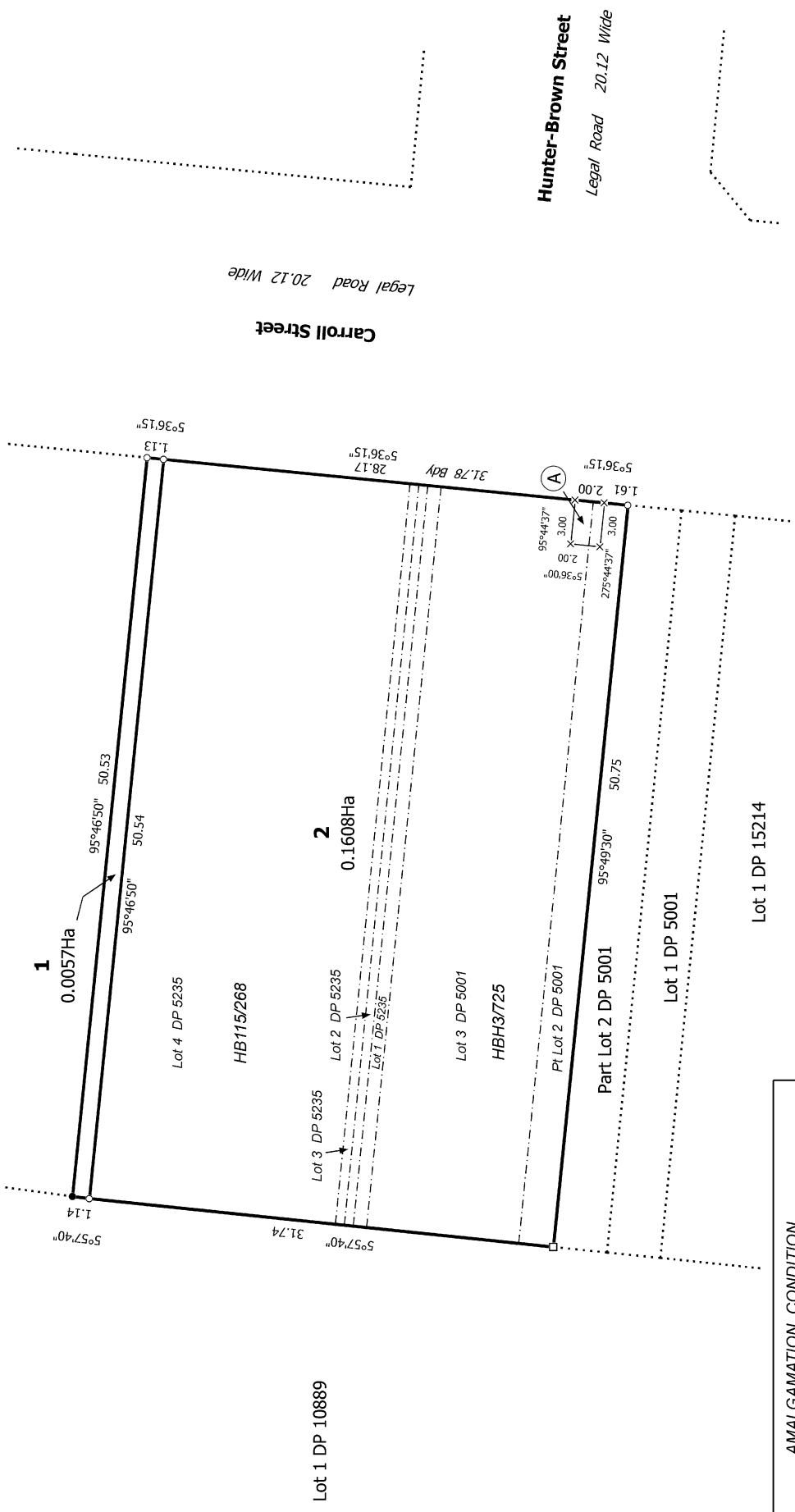
Diag. A





Diag. A

Lot 6 DP 1174  
HB115/8



Lot 1 DP 10889

**AMALGAMATION CONDITION**

*That Lot 1 hereon and Lot 6 DP 1174 be held in the same record of title.*

LINZ Request no. 1611274

T 1/1

<p>Land District: Hawkes Bay</p> <p><b>Digitally Generated Plan</b></p> <p>Generated on: 17/03/2020 2:17pm Page 8 of 8</p>	<p>Plan of Lots 1 &amp; 2 Being A Subdivision of Lots 1-4 DP 5235, Pt Lot 2 &amp; Lot 3 DP 5001</p>	<p>Surveyor: Kenneth Frank Thorn Firm: Dagg &amp; Thorn Survey Date: 24/10/2019</p>	<p>CSD Plan DP 540978</p> <p>Deposited on: 12/03/2020</p>
--	---	---	---