

Record of Survey - DP 560514

Survey Number DP 560514
Surveyor Reference A1800070.00 WWPS
Surveyor Rebecca Jane Sinclair
Survey Firm Harrison Grierson Consultants Ltd
Surveyor Declaration I Rebecca Jane Sinclair, being a licensed cadastral surveyor, certify that--
 (a) this dataset provided by me and its related survey are accurate, correct and in accordance with the Cadastral Survey Act 2002 and Cadastral Survey Rules 2021; and
 (b) the survey was undertaken by me or under my personal direction.
 Declared on 13 Dec 2022 10:25 AM

Survey Details

Dataset Description	Lot 1 and 200 being a Subdivision of Lot 2 DP 560439		
Purpose	LT Subdivision		
Status	Deposited	Type	Survey
Land District	North Auckland	Survey Class	Class A
Meridional Circuit	Mount Eden 2000	Vertical Datum	None

Survey Dates

Surveyed Date	21/10/2021	Certified Date	13/12/2022
Submitted Date	13/12/2022 10:25:01	Survey Approval Date	14/12/2022
Deposit Date	16/11/2022		

Referenced Surveys

Survey Number	Land District	Bearing Correction
DP 378470	North Auckland	0°00'00"
DP 522607	North Auckland	0°00'00"
DP 534078	North Auckland	0°00'00"
DP 560439	North Auckland	0°00'00"
DP 66174	North Auckland	-0°01'00"

Territorial Authorities

Auckland Council

Comprised In

RT 989581

Created Parcels

Parcels	Parcel Intent	Area	RT Reference
Lot 200 Deposited Plan 560514	Vesting on Deposit for Local Purpose Reserve	0.0377 Ha	1036657
Lot 1 Deposited Plan 560514	Fee Simple Title	5.1263 Ha	991367
Area A Deposited Plan 560514	Easement		
Area B Deposited Plan 560514	Easement		
Area C Deposited Plan 560514	Easement		
Total Area		5.1640 Ha	

Mark and Vector

Survey Number DP 560514

Meridional Circuit Mount Eden 2000

From	To	Code	Bearing	Adpt Surv	Bearing Correction	Distance	Adpt Surv	Class
ALP 7 DP 560439	ALP 6 DP 560439	ob0	288°34'10"	A DP 560439	0°00'00"	149.07 A	DP 560439	
ALP 6 DP 560439	ALP 5 DP 560439	ob2	298°23'30"	M		44.22 M		
ALP 3 DP 560439	ALP 2 DP 560439	ob4	296°53'30"	A DP 560439	0°00'00"	30.30 A	DP 560439	
ALP 2 DP 560439	ALP 1 DP 560439	ob6	311°35'30"	A DP 560439	0°00'00"	99.63 A	DP 560439	
ALP 1 DP 560439	AP 9 DP 486479	ob7	46°29'20"	A DP 560439	0°00'00"	232.34 A	DP 560439	
AP 9 DP 486479	AP 14 DP 486479	ob8	109°59'20"	A DP 560439	0°00'00"	173.53 A	DP 560439	
AP 14 DP 486479	ALP 7 DP 560439	ob9	170°09'30"	A DP 560439	0°00'00"	326.87 A	DP 560439	
ALP 7 DP 560439	PEG 58 DP 560439	ob1	62°44'00"	A DP 560439	0°00'00"	10.37 A	DP 560439	
PEG 61 DP 522607	UNMK 62 DP 522607	ob12	58°34'30"	A DP 522607	0°00'00"	52.58 A	DP 522607	Class AD
UNMK 62 DP 522607	IS VIII DP 66174	ob13	234°54'00"	A DP 522607	0°00'00"	38.88 A	DP 522607	
IS VIII DP 66174	AP 14 DP 486479	ob14	336°31'20"	A DP 522607	0°00'00"	267.71 A	DP 522607	
PEG 58 DP 560439	UNMK 60 DP 560439	ob11	289°31'30"	A DP 560439	0°00'00"	146.82 A	DP 560439	Class A
UNMK 60 DP 560439	UNMK 61 DP 560439	ob15	289°31'30"	A DP 560439	0°00'00"	6.80 A	DP 560439	Class A
UNMK 61 DP 560439	PEG 62 DP 560439	ob17	289°31'30"	A DP 560439	0°00'00"	35.99 A	DP 560439	Class A
PEG 63 DP 560439	DISK 64 DP 560439	ob18	304°34'00"	A DP 560439	0°00'00"	18.76 A	DP 560439	Class A
DISK 64 DP 560439	DISK 65 DP 560439	ob19	304°34'00"	A DP 560439	0°00'00"	6.30 A	DP 560439	Class A
DISK 65 DP 560439	DISK 66 DP 560439	ob20	304°34'00"	A DP 560439	0°00'00"	1.51 A	DP 560439	Class A
PEG 67 DP 560439	PEG 68 DP 560439	ob21	30°38'00"	A DP 560439	0°00'00"	2.29 A	DP 560439	Class A
PEG 68 DP 560439	PEG 69 DP 560439	ob22	304°35'00"	A DP 560439	0°00'00"	8.96 A	DP 560439	Class A
PEG 69 DP 560439	UNMK 31 DP 560514	ob23	304°35'00"	A DP 560439	0°00'00"	5.15 C		Class A
UNMK 31 DP 560514	PEG 70 DP 560439	ob32	304°35'00"	A DP 560439	0°00'00"	51.64 C		Class A
PEG 70 DP 560439	PEG 55 DP 560439	ob24	308°10'30"	A DP 560439	0°00'00"	15.94 A	DP 560439	Class A
PEG 55 DP 560439	ALP 3 DP 560439	ob25	245°50'00"	A DP 560439	0°00'00"	7.75 A	DP 560439	

Mark and Vector

Survey Number DP 560514

Meridional Circuit Mount Eden 2000

From	To	Code	Bearing	Adpt Surv	Bearing Correction	Distance	Adpt Surv	Class
PEG 55 DP 560439	UNMK 95 DP 560439	ob26	40°18'30"	A DP 378470	0°00'00"	109.16 A	DP 560439	Class A
UNMK 95 DP 560439	UNMK 94 DP 560439	ob27	40°18'30"	A DP 378470	0°00'00"	6.70 A	DP 560439	Class A
UNMK 94 DP 560439	PEG (37) DP 378470	ob28	40°18'30"	A DP 378470	0°00'00"	30.34 A	DP 560439	Class A
PEG (37) DP 378470	UNMARKED (49) DP 378470	ob29	40°18'30"	A DP 378470	0°00'00"	20.34 A	DP 378470	Class AD
UNMARKED (49) DP 378470	IT V DP 378470	ob30	228°34'30"	A DP 522607	0°00'00"	36.65 A	DP 522607	
IT V DP 378470	AP 14 DP 486479	ob31	62°25'20"	A DP 522607	0°00'00"	161.03 A	DP 522607	
UNMK 31 DP 560514	UNMK 32 DP 560514	ob33	58°12'00"	C		5.17 C		Class A
UNMK 32 DP 560514	UNMK 33 DP 560514	ob34	40°14'00"	C		6.62 C		Class A
UNMK 33 DP 560514	UNMK 34 DP 560514	ob35	40°18'00"	C		110.44 C		Class A
UNMK 34 DP 560514	UNMK 35 DP 560514	ob36	295°24'00"	C		7.98 C		Class A
UNMK 35 DP 560514	UNMK 36 DP 560514	ob37	297°13'00"	C		5.62 C		Class A
PEG 53 DP 560514	PEG 37 DP 560514	ob55	40°08'00"	C		9.26 C		Class A
PEG 37 DP 560514	PEG 38 DP 560514	ob39	28°18'00"	C		10.72 C		Class A
PEG 38 DP 560514	PEG 39 DP 560514	ob40	116°22'00"	C		17.00 C		Class A
PEG 39 DP 560514	PEG 40 DP 560514	ob41	203°32'00"	C		10.37 C		Class A
PEG 40 DP 560514	PEG 41 DP 560514	ob42	196°14'00"	C		9.54 C		Class A
PEG 41 DP 560514	UNMK 42 DP 560514	ob43	143°04'00"	C		5.76 C		Class A
UNMK 42 DP 560514	UNMK 43 DP 560514	ob44	201°31'00"	C		5.50 C		Class A
UNMK 43 DP 560514	UNMK 44 DP 560514	ob45	291°31'00"	C		3.00 C		Class A
UNMK 44 DP 560514	UNMK 45 DP 560514	ob46	220°19'50"	C		103.02 C		Class A
UNMK 45 DP 560514	UNMK 46 DP 560514	ob47	218°58'00"	C		6.26 C		Class A
UNMK 46 DP 560514	UNMK 47 DP 560514	ob48	214°35'00"	C		3.40 C		Class A
UNMK 47 DP 560514	UNMK 48 DP 560514	ob49	216°19'00"	C		8.25 C		Class A
UNMK 48 DP 560514	UNMK 100 DP 560439	ob50	124°31'00"	C		7.27 C		Class A

Mark and Vector

Survey Number DP 560514

Meridional Circuit Mount Eden 2000

From	To	Code	Bearing	Adpt Surv	Bearing Correction	Distance	Adpt Surv	Class
UNMK 100 DP 560439	UNMK 101 DP 560439	ob52	214°31'00"	C		2.20 C		Class A
UNMK 101 DP 560439	UNMK 102 DP 560439	ob53	304°31'00"	C		3.94 C		Class A
UNMK 102 DP 560439	DISK 65 DP 560439	ob54	215°29'00"	C		4.21 C		Class A
UNMK 36 DP 560514	PEG 53 DP 560514	ob38	28°08'00"	C		9.20 C		Class A
UNMK 100 DP 560439	UNMK 99 DP 560439	ob51	124°31'00"	A DP 560439	0°00'00"	2.42 A DP 560439		Class A
UNMK 99 DP 560439	DISK 64 DP 560439	ob56	215°29'00"	A DP 560439	0°00'00"	6.42 A DP 560439		Class A
UNMK 60 DP 560439	UNMK 96 DP 560439	ob16	19°31'00"	A DP 560439	0°00'00"	3.47 A DP 560439		Class A
UNMK 96 DP 560439	UNMK 97 DP 560439	ob57	310°16'00"	A DP 560439	0°00'00"	6.35 A DP 560439		Class A
UNMK 97 DP 560439	UNMK 98 DP 560439	ob58	220°20'00"	A DP 560439	0°00'00"	2.40 A DP 560439		Class A
UNMK 98 DP 560439	UNMK 61 DP 560439	ob59	199°31'00"	A DP 560439	0°00'00"	3.47 A DP 560439		Class A
ALP 3 DP 560439	ALP 4 DP 560439	ob5	129°42'30"	M		83.45 M		
ALP 4 DP 560439	ALP 5 DP 560439	ob60	115°28'00"	M		45.97 M		
ALP 4 DP 560439	PEG 68 DP 560439	ob61	45°40'00"	A DP 560439	0°00'00"	13.33 A DP 560439		
ALP 4 DP 560439	ALP 100 DP 560514	ob62	37°39'00"	M		62.05 M		
ALP 100 DP 560514	ALP 101 DP 560514	ob63	38°10'30"	M		79.56 M		
ALP 101 DP 560514	ALP 102 DP 560514	ob64	111°29'30"	M		79.24 M		
ALP 102 DP 560514	ALP 103 DP 560514	ob71	216°38'20"	M		87.69 M		
ALP 103 DP 560514	ALP 6 DP 560439	ob72	207°51'40"	M		60.04 M		
ALP 101 DP 560514	PEG 41 DP 560514	ob65	50°56'00"	M		3.29 M		
ALP 101 DP 560514	PEG 40 DP 560514	ob66	24°55'00"	M		12.38 M		
ALP 101 DP 560514	PEG 39 DP 560514	ob67	24°17'00"	M		22.75 M		
ALP 101 DP 560514	PEG 38 DP 560514	ob68	348°16'00"	M		28.89 M		
ALP 101 DP 560514	PEG 37 DP 560514	ob69	329°50'00"	M		21.80 M		
ALP 101 DP 560514	PEG 53 DP 560514	ob70	304°49'00"	M		20.61 M		

Mark and Vector

Survey Number DP 560514

Meridional Circuit Mount Eden 2000

From	To	Code	Bearing	Adpt Surv	Bearing Correction	Distance	Adpt Surv	Class
PEG 58 DP 560439	PEG 61 DP 522607	ob10	23°09'20"	A	DP 522607	0°00'00"	72.55 A	DP 560439 Class A
ALP 3 DP 560439	ALP 200 DP 560514	ob3	4°49'20"	M			42.48 M	
ALP 200 DP 560514	ALP 201 DP 560514	ob73	33°30'40"	M			71.04 M	
ALP 201 DP 560514	ALP 101 DP 560514	ob74	111°43'20"	M			116.76 M	

Mark and Vector

Survey Number DP 560514

Meridional Circuit Mount Eden 2000

From	To	Code	Chord Bearing	Arc Length	Radius	Adpt Surv
PEG 62 DP 560439	PEG 63 DP 560439	ob75	297°03'00"	24.43	93.00	A DP 560439
DISK 66 DP 560439	PEG 67 DP 560439	ob76	347°49'00"	1.50	1.00	A DP 560439
PEG 41 DP 560514	PEG 53 DP 560514	ob77	296°28'00"	21.82	76.32	C

Mark Name	Mark Condition	Description
ALP 1 DP 560439		Aluminium nail in kerb
ALP 100 DP 560514		Aluminium nail in kerb
ALP 101 DP 560514		Aluminium nail in kerb
ALP 102 DP 560514		Aluminium nail in kerb
ALP 103 DP 560514		Aluminium nail in channel
ALP 2 DP 560439		Aluminium nail in channel
ALP 200 DP 560514		Aluminium nail in kerb
ALP 201 DP 560514		Aluminium nail in kerb
ALP 3 DP 560439		Aluminium nail in kerb
ALP 4 DP 560439		Aluminium nail in kerb
ALP 5 DP 560439		Aluminium nail in kerb
ALP 6 DP 560439		Aluminium nail in kerb
ALP 7 DP 560439		Aluminium nail in kerb

***** End of Report *****

**Land Registration District**

North Auckland

Plan Number

DP 560514

Territorial Authority

Auckland Council

Memorandum of Easements in Gross

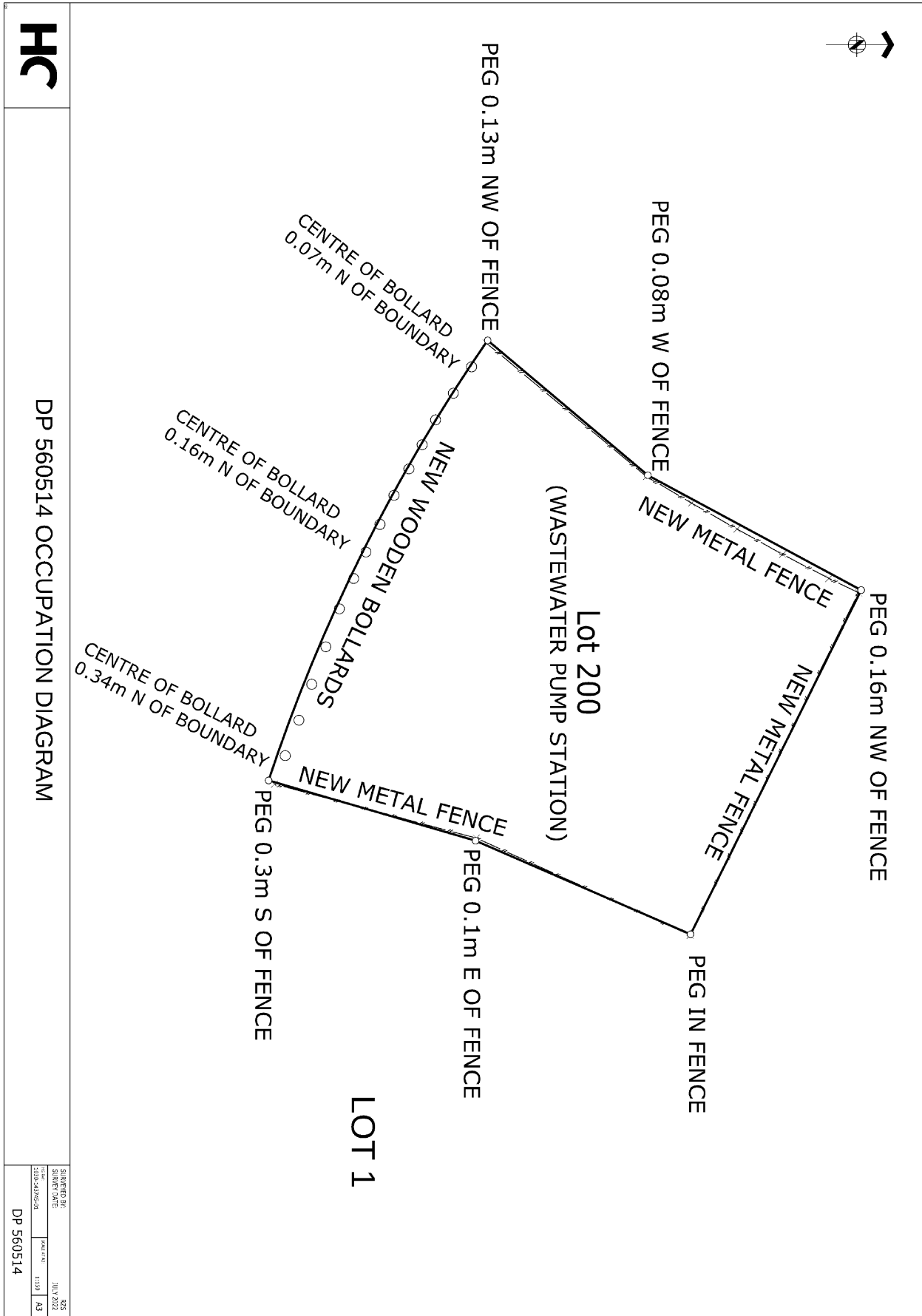
Purpose	Shown	Servient Tenement (Burdened Land)	Grantee
Right of Way, Right to Drain Sewage, Right to Convey Water, Electricity and Telecommunications	A	Lot 1	Watercare Services Limited

Schedule of Existing Easements in Gross

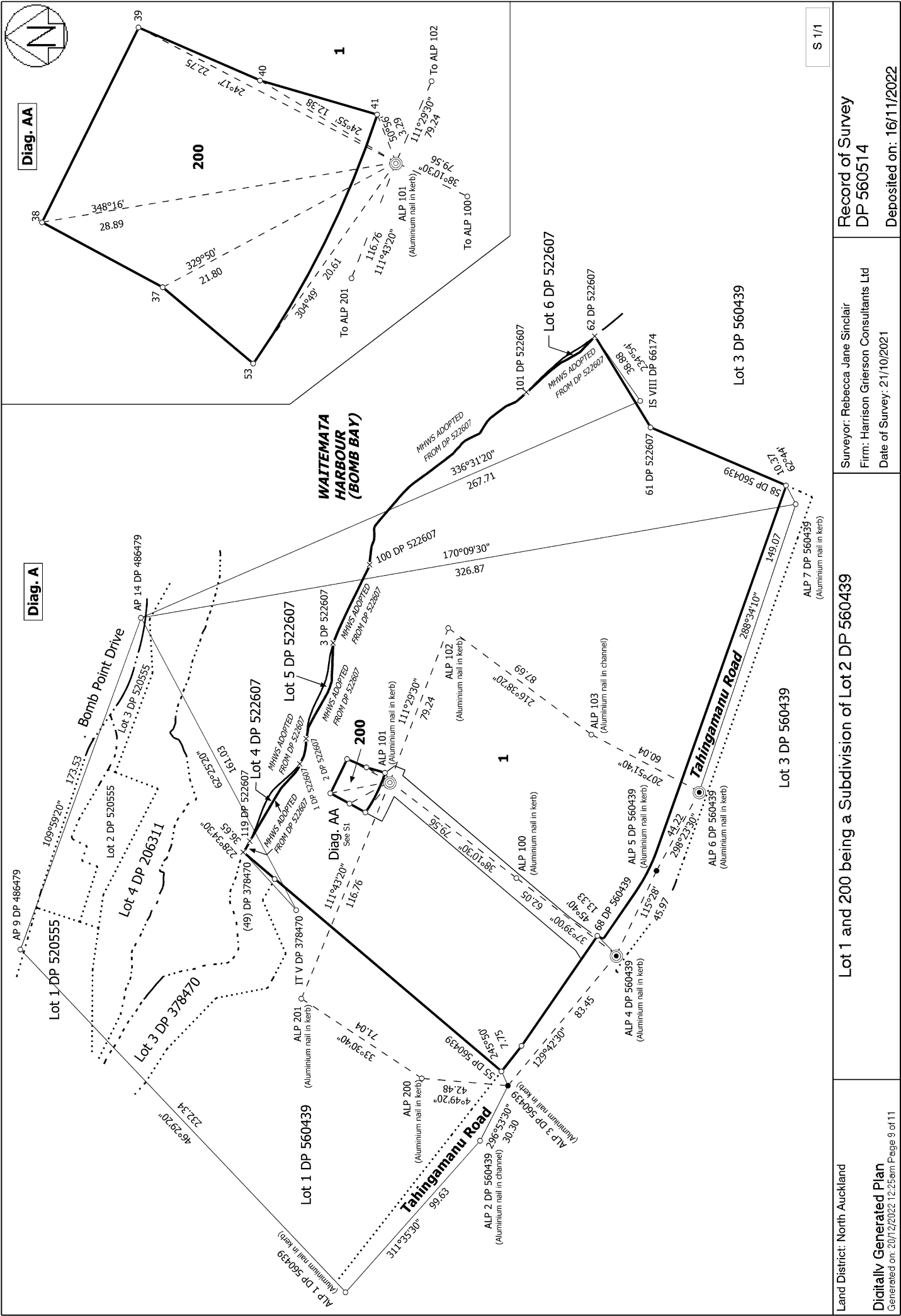
Purpose	Shown	Servient Tenement (Burdened Land)	Created by
Right to Convey Electricity	B & C	Lot 1	EI 12423156.19

Land Covenants:

Existing land covenants EI 11210189.1 and EI 11210189.2 are to be retained.



C:\126\my\work\ocd\ocd\HSC-SYMAPP\1013-143745-01_1034512D\SURVEY\Hoffshore Survey.126\mode\Hoffshore Survey (F:\JUL 15 14:34:28 2022)



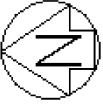
S 1/1

Record of Survey
 DP 560514
 Deposited on: 16/11/2022

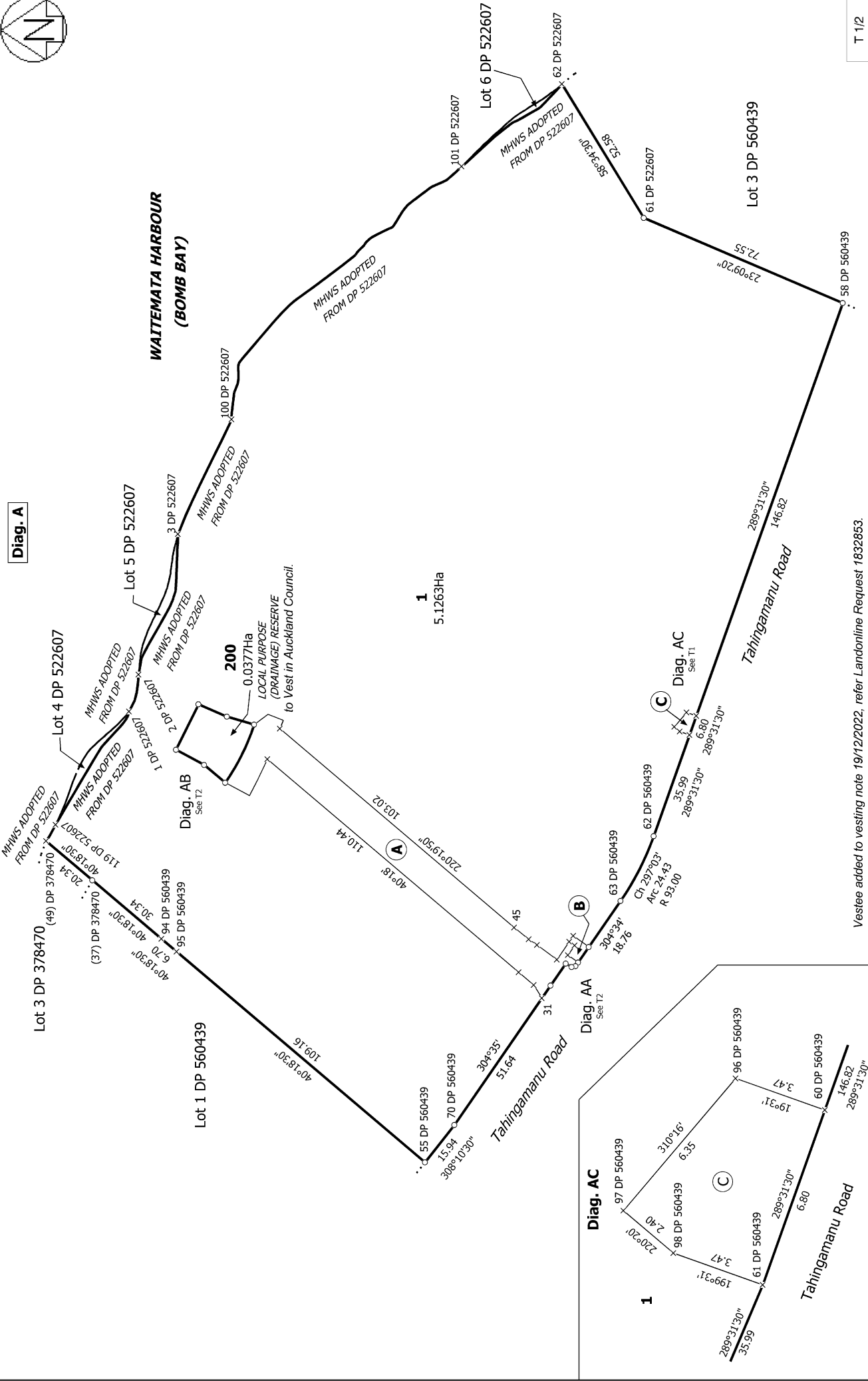
Surveyor: Rebecca Jane Sinclair
 Firm: Harrison Grierson Consultants Ltd
 Date of Survey: 21/10/2021

Lot 1 and 200 being a Subdivision of Lot 2 DP 560439

Land District: North Auckland
 Digitally Generated Plan
 Generated on: 20/12/2022 12:25:01 Page 9 of 11



Diag. A



Vestee added to vesting note 19/12/2022, refer Landonline Request 1832853.

Land District: North Auckland

Digitally Generated Plan

Generated on: 20/12/2022 12:25:56 Page 10 of 11

Lot 1 and 200 being a Subdivision of Lot 2 DP 560439

Surveyor: Rebecca Jane Sinclair

Firm: Harrison Grierson Consultants Ltd

Date of Survey: 21/10/2021

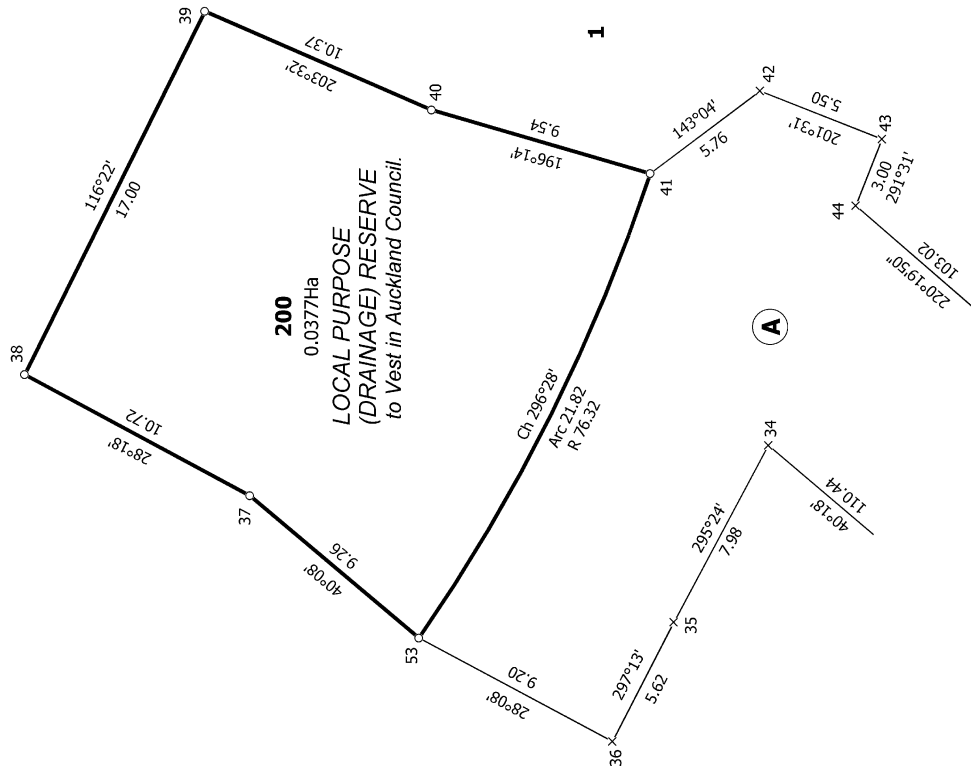
Record of Survey

DP 560514

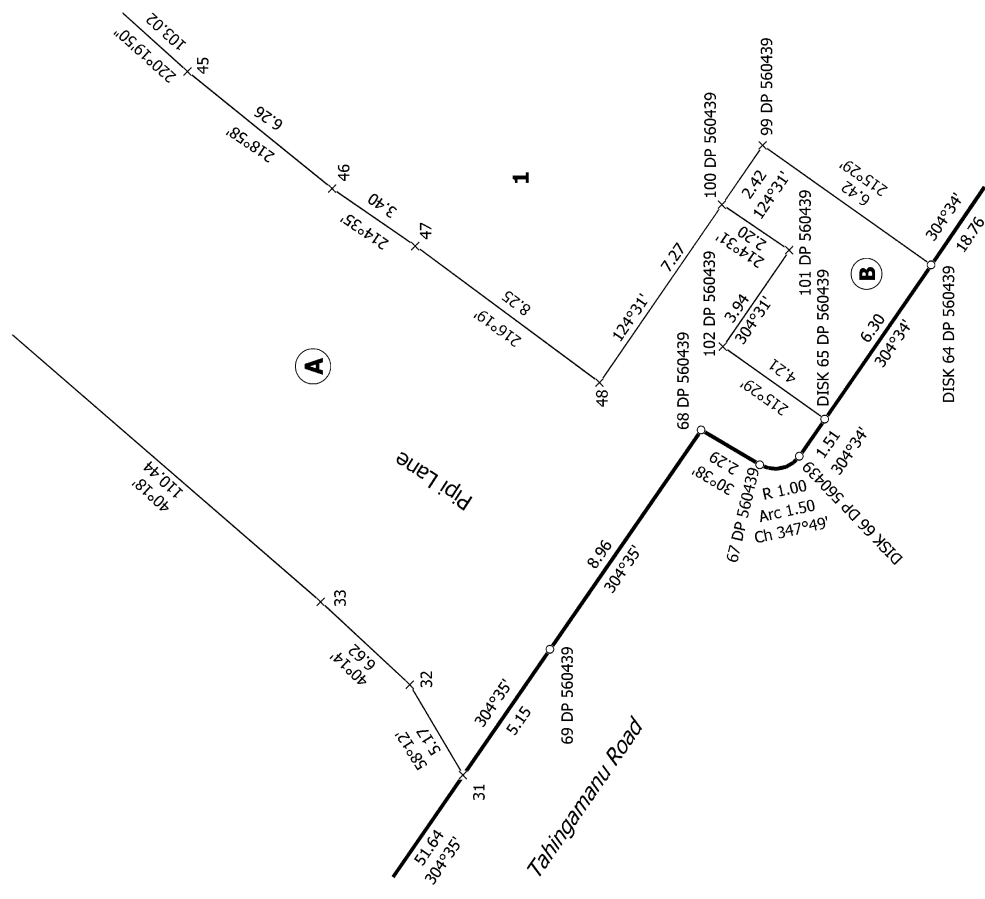
Deposited on: 16/11/2022



Diag. AB



Diag. AA



T 2/2

Vestee added to vesting note 19/12/2022, refer Landonline Request 1832853.

Lot 1 and 200 being a Subdivision of Lot 2 DP 560439

Surveyor: Rebecca Jane Sinclair
 Firm: Harrison Grierson Consultants Ltd
 Date of Survey: 21/10/2021

Record of Survey
 DP 560514

Deposited on: 16/11/2022