



Record of Survey - DP 561640

Survey Number DP 561640
Surveyor Reference 3952 - Alach
Surveyor Graeme David Smith
Survey Firm Warkworth Surveyors Limited
Surveyor Declaration I Graeme David Smith, being a licensed cadastral surveyor, certify that--
(a) this dataset provided by me and its related survey are accurate, correct and in accordance with the Cadastral Survey Act 2002 and Cadastral Survey Rules 2021; and
(b) the survey was undertaken by me or under my personal direction.
Declared on 21 Oct 2022 03:18 PM

Survey Details

Dataset Description Lots 1 & 2 being a Subdivision of Allotments 50 & 53 Parish of Ararimu.
Purpose LT Subdivision
Status Deposited **Type** Parcels without Survey Information
Land District North Auckland **Survey Class** Class B
Meridional Circuit Mount Eden 2000 **Vertical Datum** None

Survey Dates

Surveyed Date 16/04/2021 **Certified Date** 21/10/2022
Submitted Date 21/10/2022 15:18:54 **Survey Approval Date** 08/11/2022
Deposit Date 01/12/2022

Referenced Surveys

Survey Number	Land District	Bearing Correction
LT 502091	North Auckland	0°00'00"

Territorial Authorities

Auckland Council

Comprised In

RT NA945/194 Ltd

Created Parcels

Parcels	Parcel Intent	Area	RT Reference
Lot 1 Deposited Plan 561640	Fee Simple Title	1.7203 Ha	994213
Lot 2 Deposited Plan 561640	Fee Simple Title	73.0376 Ha	994214
Area A Deposited Plan 561640	Covenant - Land		
Total Area		74.7579 Ha	

Mark and Vector

Survey Number DP 561640

Meridional Circuit Mount Eden 2000

From	To	Code	Bearing	Adpt Surv	Bearing Correction	Distance	Adpt Surv	Class
PEG 108 LT 502091	PEG (1) SO 20162	ob0	173°55'00"	A LT 502091	0°00'00"	214.67 A	LT 502091	Class B
PEG (1) SO 20162	PEG (7) SO 19627	ob1	114°30'00"	A LT 502091	0°00'00"	99.76 A	LT 502091	Class B
PEG (7) SO 19627	PEG (6) SO 19627	ob2	139°56'00"	A LT 502091	0°00'00"	83.91 A	LT 502091	Class B
PEG (6) SO 19627	PEG (5) SO 19627	ob3	197°13'00"	A LT 502091	0°00'00"	48.68 A	LT 502091	Class B
PEG (5) SO 19627	PEG (4) SO 19627	ob4	159°28'00"	A LT 502091	0°00'00"	169.28 A	LT 502091	Class B
PEG (4) SO 19627	PEG (3) SO 19627	ob5	195°48'00"	A LT 502091	0°00'00"	196.46 A	LT 502091	Class B
PEG (3) SO 19627	PEG (2) SO 19627	ob6	175°00'00"	A LT 502091	0°00'00"	117.04 A	LT 502091	Class B
PEG (2) SO 19627	PEG (1) SO 19627	ob7	193°43'00"	A LT 502091	0°00'00"	325.87 A	LT 502091	Class B
PEG (1) SO 19627	PEG 113 LT 502091	ob8	163°19'00"	A LT 502091	0°00'00"	77.11 A	LT 502091	Class B
PEG 113 LT 502091	PEG 112 LT 502091	ob9	204°03'00"	A LT 502091	0°00'00"	121.93 A	LT 502091	Class B
PEG 112 LT 502091	AD 111 LT 502091	ob11	223°05'00"	A LT 502091	0°00'00"	76.83 A	LT 502091	Class B
AD 111 LT 502091	PEG 110 LT 502091	ob12	296°33'00"	A LT 502091	0°00'00"	54.12 A	LT 502091	Class B
PEG 110 LT 502091	PEG 109 LT 502091	ob13	284°24'00"	A LT 502091	0°00'00"	74.56 A	LT 502091	Class B
PEG 109 LT 502091	PEG (1) SO 36	ob14	284°24'00"	A LT 502091	0°00'00"	94.89 A	LT 502091	Class B
PEG (1) SO 36	PEG (2) DP 154905	ob15	273°39'00"	A LT 502091	0°00'00"	101.61 A	LT 502091	Class B
PEG (2) DP 154905	PEG (1) DP 154905	ob16	344°47'10"	A LT 502091	0°00'00"	239.05 A	LT 502091	Class B
PEG (1) DP 154905	PEG (1) SO 32373	ob17	344°47'10"	A LT 502091	0°00'00"	373.63 A	LT 502091	Class B
PEG (1) SO 32373	PEG (2) SO 32373	ob18	344°55'00"	A LT 502091	0°00'00"	182.24 A	LT 502091	Class B
PEG (2) SO 32373	POST (3) DP 211194	ob19	75°12'30"	A LT 502091	0°00'00"	0.54 A	LT 502091	Class B
POST (3) DP 211194	POST (2) DP 211194	ob20	353°14'00"	A LT 502091	0°00'00"	2.00 A	LT 502091	Class B
POST (2) DP 211194	POST (1) DP 211194	ob21	344°43'30"	A LT 502091	0°00'00"	194.01 A	LT 502091	Class B
POST (1) DP 211194	UNMK 1 LT 502091	ob22	344°04'00"	A LT 502091	0°00'00"	91.03 A	LT 502091	Class B
UNMK 1 LT 502091	PEG (1) DP 114116	ob23	344°04'00"	A LT 502091	0°00'00"	100.65 A	LT 502091	Class B

Mark and Vector

Survey Number DP 561640

Meridional Circuit Mount Eden 2000

From	To	Code	Bearing	Adpt Surv	Bearing Correction	Distance	Adpt Surv	Class
PEG (1) DP 114116	PEG 100 LT 502091	ob24	74°10'40"	A LT 502091	0°00'00"	44.52 A	LT 502091	Class B
PEG 100 LT 502091	PEG 101 LT 502091	ob25	74°10'40"	A LT 502091	0°00'00"	39.41 A	LT 502091	Class B
PEG 101 LT 502091	PEG 102 LT 502091	ob27	74°10'40"	A LT 502091	0°00'00"	71.73 A	LT 502091	Class B
PEG 102 LT 502091	PEG (2) DP 114116	ob28	74°10'40"	A LT 502091	0°00'00"	12.40 A	LT 502091	Class B
PEG (2) DP 114116	PEG 103 LT 502091	ob29	74°10'40"	A LT 502091	0°00'00"	19.22 A	LT 502091	Class B
PEG 103 LT 502091	PEG 104 LT 502091	ob30	74°10'40"	A LT 502091	0°00'00"	83.12 A	LT 502091	Class B
PEG 104 LT 502091	PEG 105 LT 502091	ob31	74°10'40"	A LT 502091	0°00'00"	49.81 A	LT 502091	Class B
PEG 105 LT 502091	PEG 106 LT 502091	ob32	74°10'40"	A LT 502091	0°00'00"	135.93 A	LT 502091	Class B
PEG 106 LT 502091	PEG 107 LT 502091	ob33	74°10'40"	A LT 502091	0°00'00"	80.79 A	LT 502091	Class B
PEG 107 LT 502091	PEG 108 LT 502091	ob34	74°10'40"	A LT 502091	0°00'00"	100.95 A	LT 502091	Class B
PEG 113 LT 502091	PEG 114 LT 502091	ob10	241°42'00"	A LT 502091	0°00'00"	126.99 A	LT 502091	Class B
PEG 114 LT 502091	PEG 115 LT 502091	ob35	276°42'40"	A LT 502091	0°00'00"	92.21 A	LT 502091	Class B
PEG 115 LT 502091	PEG 109 LT 502091	ob36	194°28'00"	A LT 502091	0°00'00"	77.75 A	LT 502091	Class B
PEG 100 LT 502091	POST 116 LT 502091	ob26	152°31'00"	A LT 502091	0°00'00"	33.78 A	LT 502091	Class B
POST 116 LT 502091	POST 117 LT 502091	ob37	144°28'00"	A LT 502091	0°00'00"	68.29 A	LT 502091	Class B
POST 117 LT 502091	POST 118 LT 502091	ob38	72°05'20"	A LT 502091	0°00'00"	80.25 A	LT 502091	Class B
POST 118 LT 502091	POST 119 LT 502091	ob39	107°37'00"	A LT 502091	0°00'00"	26.33 A	LT 502091	Class B
POST 119 LT 502091	POST 120 LT 502091	ob40	177°32'00"	A LT 502091	0°00'00"	39.94 A	LT 502091	Class B
POST 120 LT 502091	POST 121 LT 502091	ob41	254°01'00"	A LT 502091	0°00'00"	3.74 A	LT 502091	Class B
POST 121 LT 502091	POST 122 LT 502091	ob42	242°52'00"	A LT 502091	0°00'00"	9.52 A	LT 502091	Class B
POST 122 LT 502091	POST 123 LT 502091	ob43	243°03'00"	A LT 502091	0°00'00"	45.52 A	LT 502091	Class B
POST 123 LT 502091	POST 124 LT 502091	ob44	260°19'00"	A LT 502091	0°00'00"	66.84 A	LT 502091	Class B
POST 124 LT 502091	POST 125 LT 502091	ob45	284°14'00"	A LT 502091	0°00'00"	23.33 A	LT 502091	Class B



Mark and Vector

Survey Number DP 561640

Meridional Circuit Mount Eden 2000

From	To	Code	Bearing	Adpt Surv	Bearing Correction	Distance	Adpt Surv	Class
POST 125 LT 502091	UNMK 1 LT 502091	ob46	313°56'00" A	LT 502091	0°00'00"	45.18 A	LT 502091	Class B

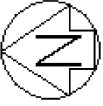
*** End of Report ***

DP 561640

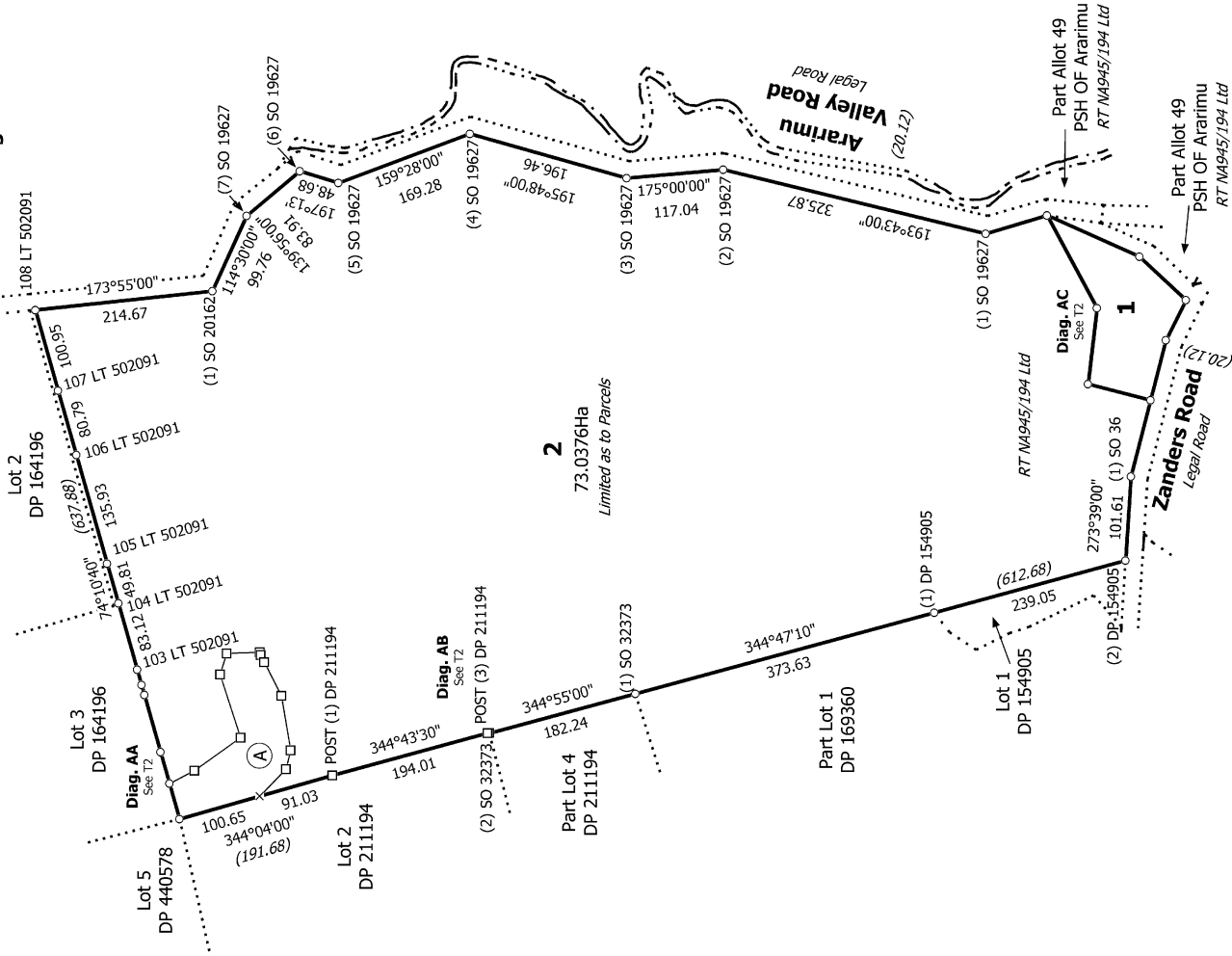
Amalgamation Condition

That Lot 2 hereon and Parts Allotment 49 Parish of Ararimu (RT NA945/194 Ltd) be held in the same Record of Title.





Diag. A



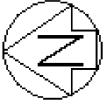
Note:
Area A is to be subject to a Land Covenant.
See attached Schedule/Memorandum for Amalgamation Condition.

Auckland Council Reference: SUB60373191
Surveyor's Reference: 3952

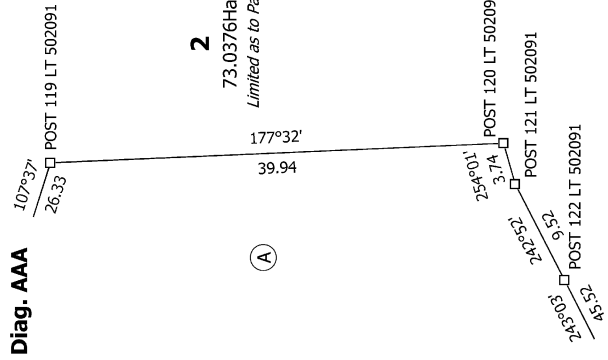
Record of Survey
DP 561640
Deposited on: 1/12/2022

Surveyor: Graeme David Smith
Firm: Markworth Surveyors Limited
Date of Survey: 16/04/2021

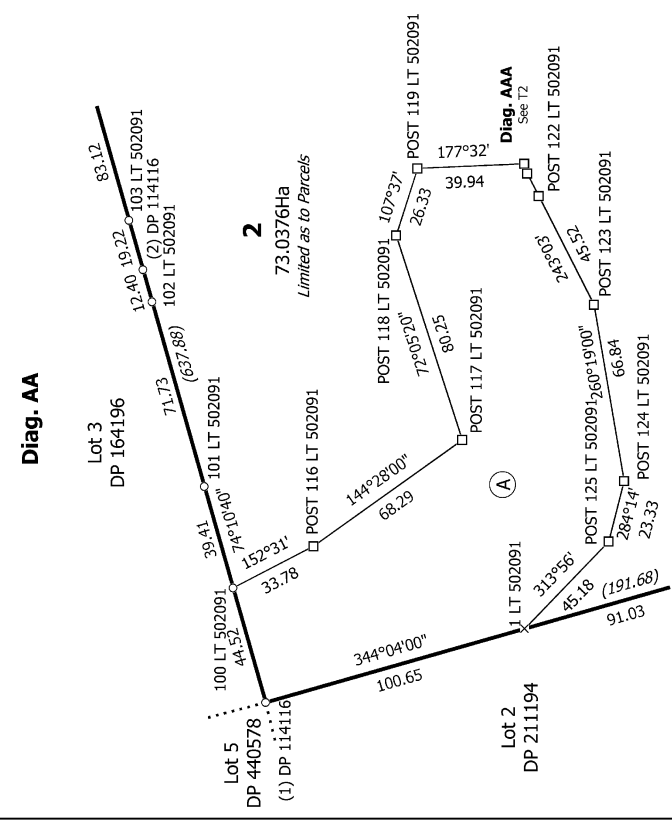
Lots 1 & 2 being a Subdivision of Allotments 50 & 53 Parish of Ararimu.



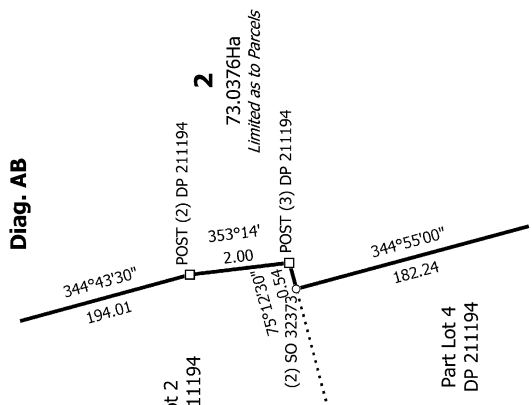
Diag. AAA



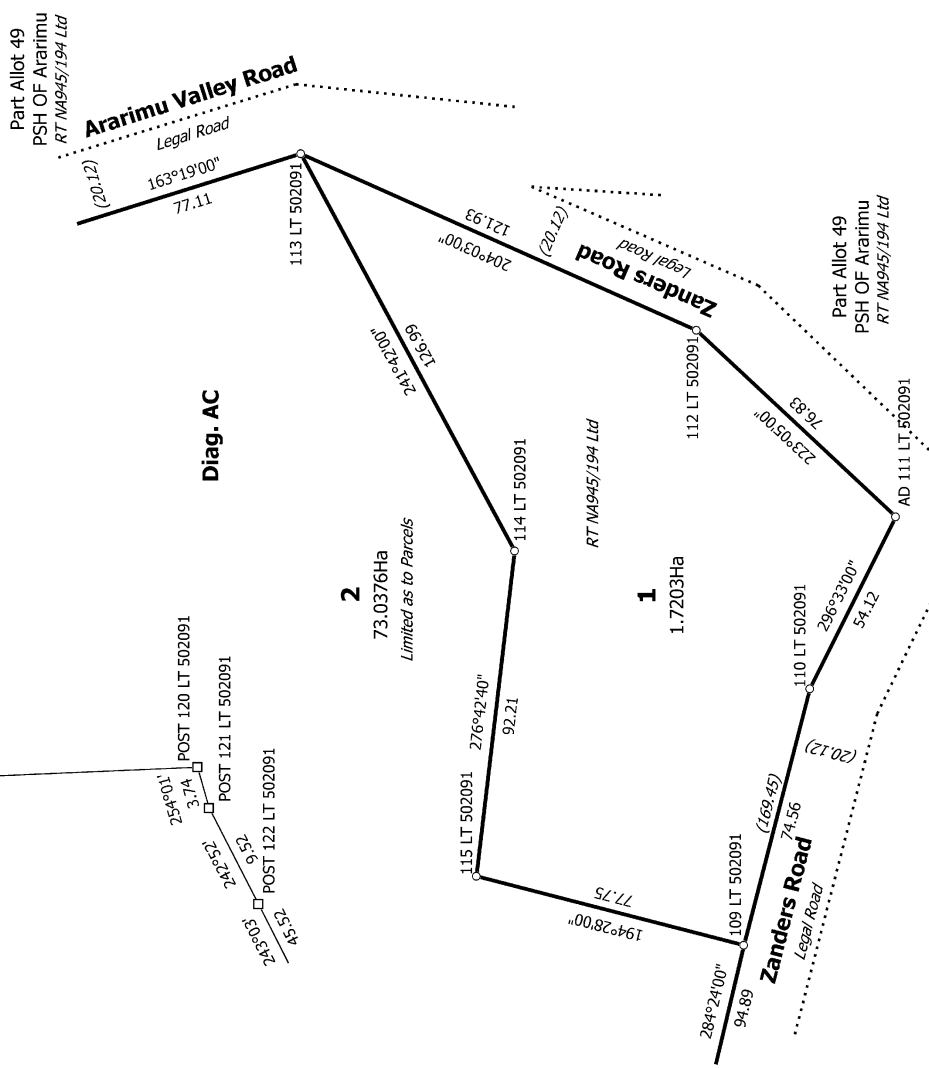
Diag. AA



Diag. AB



Diag. AC



T 2/2

Auckland Council Reference: SUB60373191
Surveyor's Reference: 3952

Do not scale
Land District: North Auckland
Dataset Type: Parcels without Survey Information
Digitally Generated Plan
Generated on: 22/12/2022 12:51:01 PM Page 7 of 7

Lots 1 & 2 being a Subdivision of Allotments 50 & 53 Parish of Ararimu.

Surveyor: Graeme David Smith
Firm: Warkworth Surveyors Limited
Date of Survey: 16/04/2021

Record of Survey
DP 561640
Deposited on: 1/12/2022