



Record of Survey - DP 567022

Survey Number	DP 567022
Surveyor Reference	4594
Surveyor	Alistair Graeme Bond
Survey Firm	Cogswell Surveys Ltd
Surveyor Declaration	I Alistair Graeme Bond, being a licensed cadastral surveyor, certify that-- (a) this dataset provided by me and its related survey are accurate, correct and in accordance with the Cadastral Survey Act 2002 and Cadastral Survey Rules 2021; and (b) the survey was undertaken by me or under my personal direction. Declared on 02 Mar 2023 12:06 PM

Survey Details

Dataset Description	LOTS 1 AND 2 BEING A SUBDIVISION OF PART DEPOSITED PLAN 4972		
Purpose	LT Subdivision		
Status	Deposited	Type	Survey
Land District	South Auckland	Survey Class	Class A
Meridional Circuit	Mount Eden 2000	Vertical Datum	None

Survey Dates

Surveyed Date	15/02/2022	Certified Date	02/03/2023
Submitted Date	02/03/2023 12:06:56	Survey Approval Date	28/03/2023
Deposit Date	18/04/2023		

Referenced Surveys

Survey Number	Land District	Bearing Correction
DPS 2024	South Auckland	0°00'00"
DP 4972	South Auckland	0°00'00"
DPS 2604	South Auckland	0°00'00"
SO 34762	South Auckland	0°00'00"
SO 58434	South Auckland	0°00'00"
DP 378848	South Auckland	0°00'00"
DP 547270	South Auckland	0°00'00"

Territorial Authorities

Waipa District

Comprised In

RT SA355/277

Created Parcels

Parcels	Parcel Intent	Area	RT Reference
Lot 1 Deposited Plan 567022	Fee Simple Title	0.0531 Ha	1015443
Lot 2 Deposited Plan 567022	Fee Simple Title	0.0481 Ha	1015444
Area A Deposited Plan 567022	Easement		
Total Area		0.1012 Ha	

Mark and Vector

Survey Number DP 567022

Meridional Circuit Mount Eden 2000

From	To	Code	Bearing	Adpt Surv	Bearing Correction	Distance	Adpt Surv	Class
SS 30 SO 47958	SS 44 SO 58434	ob0	356°08'40"	M		208.11 M		
SS 44 SO 58434	PLUG 3 DP 547270	ob2	185°00'30"	M		112.49 M		
PLUG 3 DP 547270	PLUG 2 DP 547270	ob4	176°38'00"	M		20.41 M		
PLUG 2 DP 547270	PLUG 1 DP 547270	ob11	176°38'00"	M		23.56 M		
PLUG 1 DP 547270	SS 30 SO 47958	ob16	157°41'00"	M		55.87 M		
SS 30 SO 47958	IP III DP 4972	ob1	356°08'40"	A DP 378848	0°00'00"	101.81 A DP 4972		
IP III DP 4972	SS 44 SO 58434	ob28	356°08'40"	A DP 378848	0°00'00"	106.30 A DP 4972		
IP IV SO 34762	PEG II DPS 2604	ob40	175°06'20"	A SO 34762	0°00'00"	22.78 A DPS 2604		
PEG II DPS 2604	PEG VI DPS 2024	ob18	175°06'20"	A SO 34762	0°00'00"	7.52 A DPS 2604		
PEG VI DPS 2024	IB III SO 34762	ob20	175°06'20"	A SO 34762	0°00'00"	10.31 A DPS 2024		
IB III SO 34762	IS II SO 34762	ob21	175°06'20"	A SO 34762	0°00'00"	61.80 A SO 34762		
IS II SO 34762	SS 30 SO 47958	ob22	86°33'30"	A SO 58434	0°00'00"	69.57 A SO 34762		
PLUG 2 DP 547270	POST G DP 547270	ob12	270°09'00"	M		50.80 M		
PLUG 2 DP 547270	PEG A DP 547270	ob13	283°47'00"	M		10.95 M		
PEG II DPS 2604	POST G DP 547270	ob19	86°29'00"	A DPS 2604	0°00'00"	2.87 A DPS 2604		
IP IV SO 34762	PEG G DP 567022	ob17	51°34'00"	A SO 34762	0°00'00"	4.19 A SO 34762		
IP III DP 4972	PEG A DP 567022	ob29	272°44'00"	A DP 4972	0°00'00"	27.94 A DP 4972		
PEG G DP 567022	PEG F DP 567022	ob25	86°32'00"	A DP 4972	0°00'00"	17.88 C		Class A
PEG F DP 567022	PEG A DP 567022	ob32	86°32'00"	A DP 4972	0°00'00"	22.35 C		Class A
PEG A DP 567022	PEG B DP 567022	ob26	176°32'00"	A DP 4972	0°00'00"	20.98 C		Class A
PEG B DP 567022	PEG A DP 547270	ob30	176°32'00"	A DP 4972	0°00'00"	4.17 C		Class A
PEG A DP 547270	UNMK U2 DP 567022	ob24	266°29'00"	A DPS 2604	0°00'00"	2.50 C		Class A
UNMK U2 DP 567022	PEG F DP 547270	ob38	266°29'00"	A DPS 2604	0°00'00"	20.14 C		Class A
PEG F DP 547270	POST G DP 547270	ob27	266°29'00"	A DPS 2604	0°00'00"	17.59 A DP 547270		Class A
POST G DP 547270	PEG DPS 2024	ob23	356°32'00"	A DP 4972	0°00'00"	16.78 C		Class A
PEG B DP 567022	PEG C DP 567022	ob31	255°28'00"	C		3.50 C		Class A

Mark and Vector

Survey Number DP 567022

Meridional Circuit Mount Eden 2000

From	To	Code	Bearing	Adpt Surv	Bearing Correction	Distance	Adpt Surv	Class
PEG C DP 567022	UNMK U1 DP 567022	ob33	266°29'00"	C		5.74 C		Class A
UNMK U1 DP 567022	PEG D DP 567022	ob36	266°29'00"	C		10.91 C		Class A
PEG D DP 567022	PEG E DP 567022	ob34	303°44'00"	C		2.84 C		Class A
PEG E DP 567022	PEG F DP 567022	ob35	356°32'00"	C		19.94 C		Class A
UNMK U1 DP 567022	UNMK U2 DP 567022	ob37	114°10'00"	C		7.53 C		Class A
PLUG 3 DP 547270	PEG A DP 567022	ob5	303°49'00"	M		13.18 M		
PLUG 3 DP 547270	PEG B DP 567022	ob6	215°27'00"	M		16.70 M		
PLUG 3 DP 547270	PEG C DP 567022	ob7	222°04'00"	M		19.51 M		
PLUG 3 DP 547270	PEG G DP 567022	ob8	275°29'00"	M		51.35 M		
PLUG 3 DP 547270	PEG F DP 567022	ob9	280°12'00"	M		33.80 M		
PLUG 2 DP 547270	PEG D DP 567022	ob14	278°58'00"	M		31.27 M		
PLUG 2 DP 547270	PEG E DP 567022	ob15	280°58'00"	M		33.87 M		
PEG DPS 2024	PEG G DP 567022	ob39	356°32'00"	A DP 4972	0°00'00"	8.37 A	DPS 2024	Class A
PLUG 3 DP 547270	IP IV SO 34762	ob3	272°25'00"	M		54.45 M		
PLUG 2 DP 547270	SS 44 SO 58434	ob10	3°43'20"	M		132.72 M		

Mark Name	Mark Condition	Description
IP IV SO 34762		In backyard, 1.0 W of a tree at a depth of 0.3m
PEG A DP 547270		Eastern base of post
PEG A DP 567022		Reinstates PEG IIIa DP 4972. Eastern base of fence.
PEG B DP 567022		0.5 S of Post
PEG F DP 567022		In wooden paling fenceline
PEG G DP 567022		Reinstates POST IIa DP 4972. 0.3 W of Post
PLUG 1 DP 547270		On top of kerb
PLUG 2 DP 547270		On top of kerb
PLUG 3 DP 547270		On top of kerb
POST G DP 547270		Disc on post
SS 30 SO 47958		Iron Tube, dwn 0.1m in grass berm. 1.7m S of FP, 3.5m W of PP
SS 44 SO 58434		Iron Tube, dwn 0.1m in grass berm, 0.3m W of footpath



Mark and Vector

Survey Number DP 567022
Meridional Circuit Mount Eden 2000

Mark Name	Mark Condition	Description
IP III DP 4972	Searched For and Not Found	Mark not found. Under new concrete footpath

***** End of Report *****

Schedule / Memorandum

Land Registration District

South Auckland

Survey Number

LT 567022

Territorial Authority (the Council)

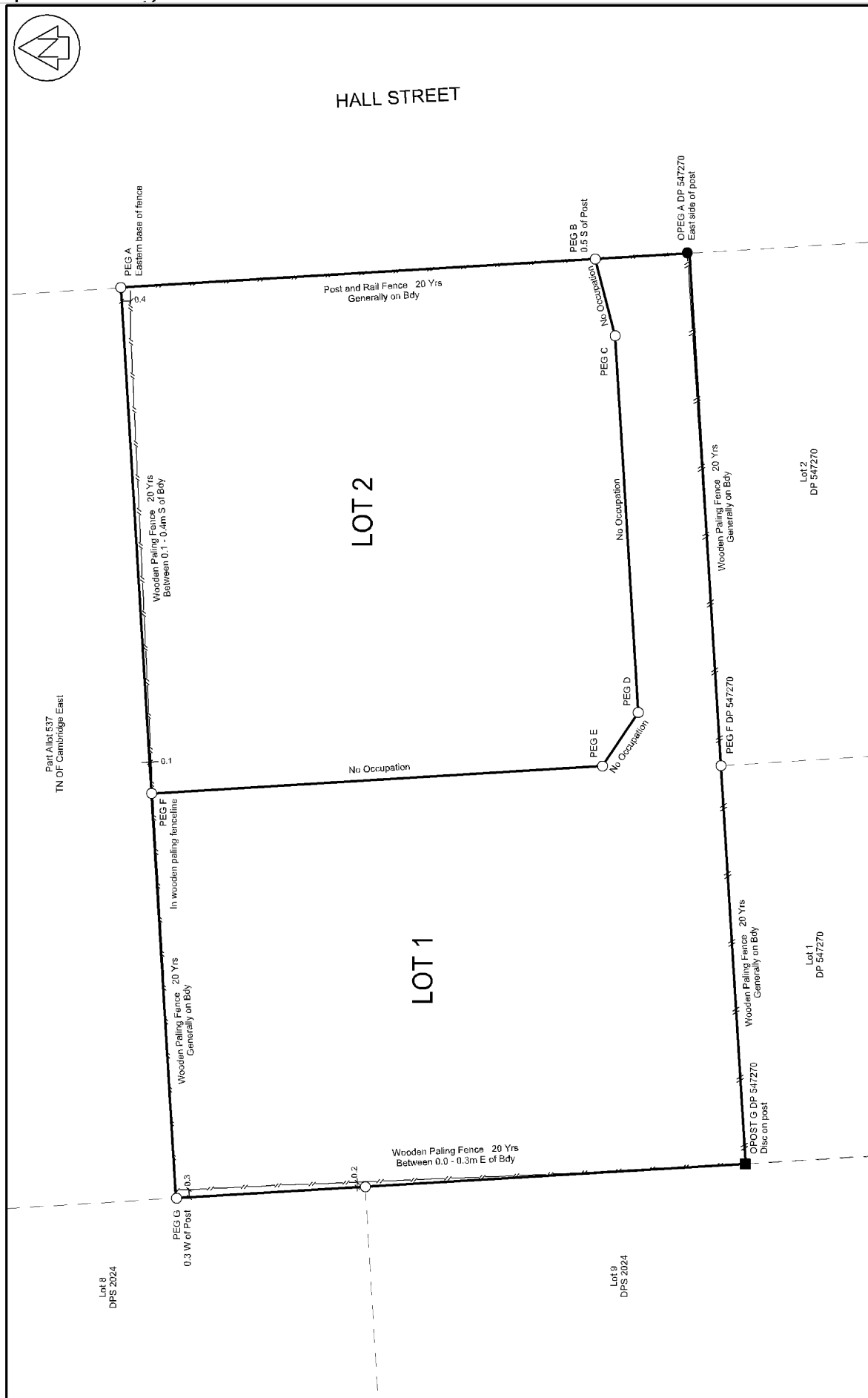
Waipa District

Memorandum of Easements

Last Edited: 01 Mar 2022 07:19:55

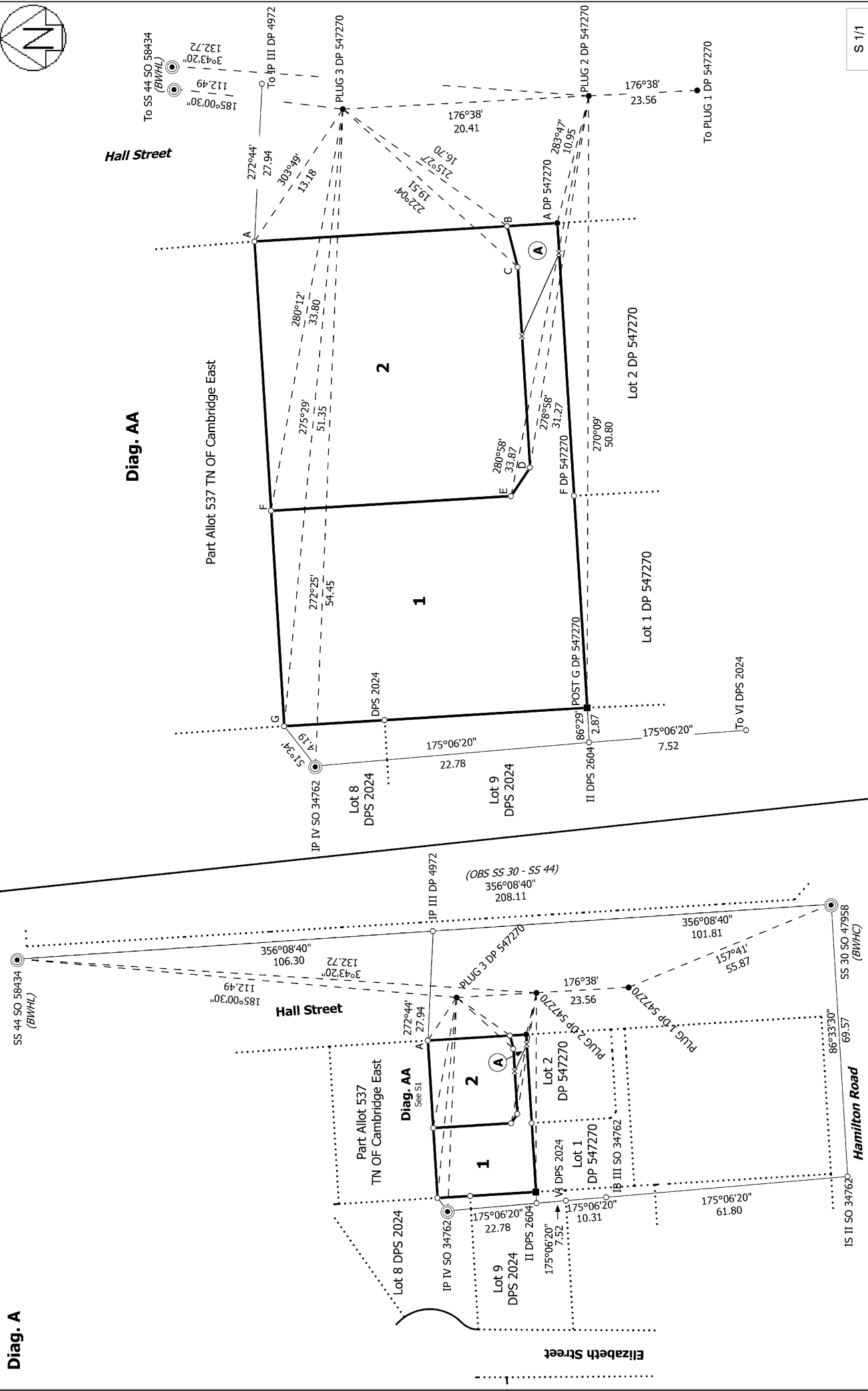
<u>Purpose</u>	<u>Shown</u>	<u>Burdened Land</u> (<u>Servient Tenement</u>)	<u>Benefited Land</u> (<u>Dominant Tenement</u>)
Right to drain sewage	A	Lot 1	Lot 2
Right to convey electricity, telecommunications	A	Lot 1	Lot 2

Occupation Diagram



Scale: 1:150 @A3 Date: MARCH 2022 Drawing No: 4594-OCC-1 Rev: 01	
Project: OCCUPATION DIAGRAM DP 567022	
Prepared For: Curtis, Jamie & Tammy	NOTES:
 COGSWELL SURVEYING ENGINEERING PLANNING 5 MILICICH PLACE, P.O. BOX 156, CAMBRIDGE Ph: (07) 827 5971 E: office@cogswellsurveys.co.nz REF: 4594 www.cogswellsurveys.co.nz	

Diag. A

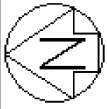


Record of Survey
 DP 567022
 Deposited on: 18/04/2023

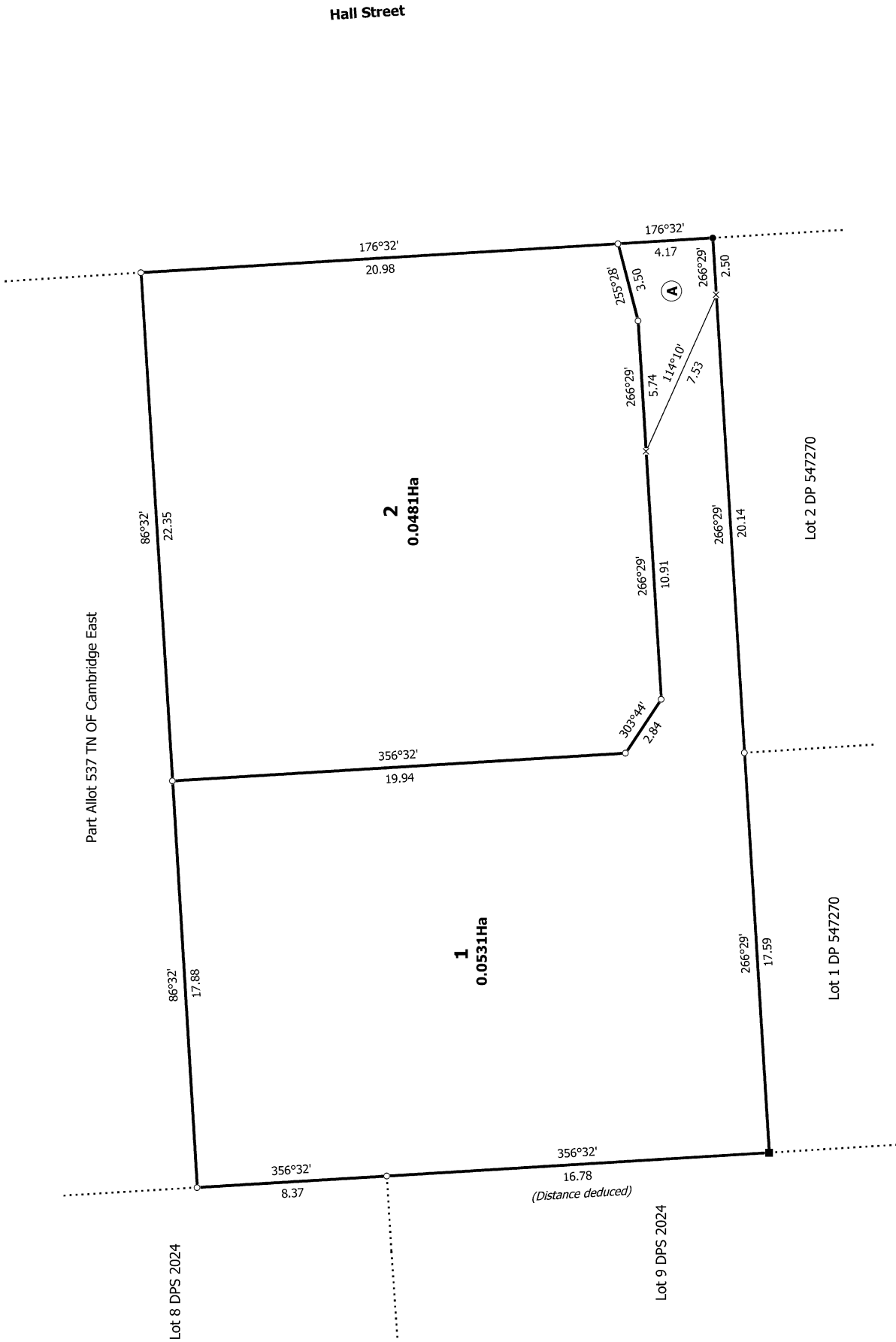
Surveyor: Alistair Graeme Bond
 Firm: Cogswell Surveys Ltd
 Date of Survey: 15/02/2022

LOTS 1 AND 2 BEING A SUBDIVISION OF PART DEPOSITED PLAN 4972

Land District: South Auckland
 Digitally Generated Plan
 Generated on: 18/05/2023 11:54:46am Page 7 of 8



Diag. A



T 1/1

<p>Land District: South Auckland</p> <p>Digitally Generated Plan</p> <p>Generated on: 18/05/2023 11:54am Page 8 of 8</p>	<p>LOTS 1 AND 2 BEING A SUBDIVISION OF PART DEPOSITED PLAN 4972</p>	<p>Surveyor: Alistair Graeme Bond Firm: Cogswell Surveys Ltd Date of Survey: 15/02/2022</p>	<p>Record of Survey DP 567022 Deposited on: 18/04/2023</p>
---	--	---	--