

Record of Survey - DP 567375

Survey Number DP 567375
Surveyor Reference 210236-Sinclair
Surveyor Dean Sherrit
Survey Firm Cheal Consultants Limited
Surveyor Declaration I Dean Sherrit, being a licensed cadastral surveyor, certify that--
 (a) this dataset provided by me and its related survey are accurate, correct and in accordance with the Cadastral Survey Act 2002 and Cadastral Survey Rules 2021; and
 (b) the survey was undertaken by me or under my personal direction.
 Declared on 20 Jun 2022 02:57 PM

Survey Details

Dataset Description	Lots 1 & 2 being a Subdivision of Lot 1 DP 501652		
Purpose	LT Subdivision		
Status	Deposited	Type	Survey
Land District	South Auckland	Survey Class	Class B
Meridional Circuit	Mount Eden 2000	Vertical Datum	None

Survey Dates

Surveyed Date	14/12/2021	Certified Date	20/06/2022
Submitted Date	20/06/2022 14:57:13	Survey Approval Date	21/06/2022
Deposit Date	31/05/2022		

Referenced Surveys

Survey Number	Land District	Bearing Correction
DPS 34508	South Auckland	0°01'10"
SO 43096	South Auckland	0°01'10"
ML 12704	South Auckland	0°01'10"
DP 501652	South Auckland	0°00'00"
ML 8269/2	South Auckland	0°01'10"

Territorial Authorities

Ruapehu District

Comprised In

RT 750202

Created Parcels

Parcels	Parcel Intent	Area	RT Reference
Area B Deposited Plan 567375	Easement		
Area E Deposited Plan 567375	Easement		
Area F Deposited Plan 567375	Easement		
Area X Deposited Plan 567375	Easement		
Area A Deposited Plan 567375	Easement		
Lot 1 Deposited Plan 567375	Fee Simple Title	2.0460 Ha	1016931
Lot 2 Deposited Plan 567375	Fee Simple Title	1.4880 Ha	1016932



Record of Survey - DP 567375

Created Parcels

Parcels	Parcel Intent	Area	RT Reference
Area G Deposited Plan 567375	Erosion Easement		
Total Area		<hr/> 3.5340 Ha	

Mark and Vector

Survey Number DP 567375

Meridional Circuit Mount Eden 2000

From	To	Code	Bearing	Adpt Surv	Bearing Correction	Distance	Adpt Surv	Class
IT XIII LTS 78930	IR 1 DP 501652	ob0	294°05'05" M			1,087.84 M		
IR 1 DP 501652	IT X DPS 34508	ob1	257°00'30" M			328.06 M		
IT X DPS 34508	IT XIII LTS 78930	ob11	105°44'50" A	DP 501652	0°00'00"	1,363.98 A	DP 501652	
IR 1 DP 501652	IS XI DPS 34508	ob2	267°54'00" M			391.18 M		
IR 1 DP 501652	IT III SO 43096	ob3	297°55'00" M			386.57 M		
IR 1 DP 501652	PEG 2 DP 567375	ob4	261°01'00" M			206.46 M		
IR 1 DP 501652	IT 3 DP 501652	ob5	296°52'03" M			312.21 M		
IT 3 DP 501652	IT III SO 43096	ob17	302°19'10" A	DP 501652	0°00'00"	74.64 A	DP 501652	
IT III SO 43096	IT X DPS 34508	ob13	175°04'50" A	DP 501652	0°00'00"	255.68 A	DP 501652	
IT III SO 43096	IS XI DPS 34508	ob14	194°10'30" A	DP 501652	0°00'00"	201.46 A	DP 501652	
IS XI DPS 34508	IT X DPS 34508	ob12	129°49'20" A	DP 501652	0°00'00"	92.78 A	DP 501652	
IR 2 DP 501652	IR 1 DP 501652	ob18	56°35'00" M			131.87 M		
IT III SO 43096	PEG (23) SO 43096	ob16	157°19'10" A	DPS 34508	0°01'10"	27.07 A	DPS 34508	
PEG (23) SO 43096	IS (24) SO 43096	ob19	75°26'10" A	SO 43096	0°01'10"	21.26 A	SO 43096	
IS (24) SO 43096	IT III SO 43096	ob21	302°21'10" A	SO 43096	0°01'10"	36.67 A	SO 43096	
PEG (23) SO 43096	UNMK (27) SO 43096	ob20	202°44'40" A	SO 43096	0°01'10"	0.24 A	SO 43096	
UNMK (27) SO 43096	UNMK (26) SO 43096	ob22	133°23'10" A	SO 43096	0°01'10"	21.48 A	SO 43096	
UNMK (26) SO 43096	PEG (25) SO 43096	ob24	22°44'40" A	SO 43096	0°01'10"	5.85 A	SO 43096	
PEG (25) SO 43096	IS (24) SO 43096	ob25	10°32'10" A	SO 43096	0°01'10"	15.21 A	SO 43096	
UNMK (27) SO 43096	PEG (41) SO 43096	ob23	202°47'10" A	DPS 34508	0°01'10"	21.48 A	SO 43096	
PEG (41) SO 43096	PEG (40) SO 43096	ob26	133°23'10" A	SO 43096	0°01'10"	21.48 A	SO 43096	
PEG (40) SO 43096	UNMK (26) SO 43096	ob27	22°47'10" A	DPS 34508	0°01'10"	21.48 A	SO 43096	Class B
IR 1 DP 501652	PEG 1 DP 501652	ob6	283°21'40" M			76.98 M		
PEG 1 DP 501652	UNMK (30) SO 43096	ob36	298°21'00" A	SO 43096	0°01'10"	5.86 A	DP 501652	Class B
UNMK (30) SO 43096	UNMK 85 DP 501652	ob38	292°12'10" A	SO 43096	0°01'10"	3.97 A	DP 501652	Class B
UNMK 85 DP 501652	UNMK 86 DP 501652	ob29	292°12'10" A	SO 43096	0°01'10"	3.01 A	DP 501652	Class B
UNMK 86 DP 501652	PEG 1 DP 567375	ob30	292°12'10" A	SO 43096	0°01'10"	87.76 C		Class B
PEG 1 DP 567375	PEG (29) SO 43096	ob32	292°12'10" A	SO 43096	0°01'10"	96.37 C		Class B

Mark and Vector

Survey Number DP 567375

Meridional Circuit Mount Eden 2000

From	To	Code	Bearing	Adpt Surv	Bearing Correction	Distance	Adpt Surv	Class
PEG (29) SO 43096	PEG (28) SO 43096	ob76	306°20'10"	A SO 43096	0°01'10"	42.81 A	SO 43096	Class B
PEG (28) SO 43096	UNMK (26) SO 43096	ob77	313°23'10"	A SO 43096	0°01'10"	33.33 A	SO 43096	Class B
IR 1 DP 501652	PEG 1 DP 567375	ob7	288°34'00"	M		176.97 M		
PEG (40) SO 43096	UNMK 83 DP 501652	ob28	202°47'10"	A DPS 34508	0°01'10"	18.86 A	DP 501652	Class B
UNMK 83 DP 501652	UNMK 80 DP 501652	ob34	202°47'10"	A DPS 34508	0°01'10"	3.00 A	DP 501652	Class B
UNMK 80 DP 501652	UNMK 8 DP 567375	ob40	202°47'10"	A DPS 34508	0°01'10"	58.54 C		Class BD
UNMK 8 DP 567375	UNMK (42) DPS 34508	ob42	202°47'10"	A DPS 34508	0°01'10"	5.16 C		Class BD
UNMK (42) DPS 34508	UNMK (1) ML 12704	ob75	202°47'10"	A DPS 34508	0°01'10"	3.02 A	ML 12704	
UNMK (1) ML 12704	PEG (44) ML 12704	ob43	202°47'10"	A DPS 34508	0°01'10"	84.49 A	ML 12704	
PEG (44) ML 12704	PEG (45) ML 12704	ob44	305°47'10"	A ML 12704	0°01'10"	41.44 A	ML 12704	
PEG (45) ML 12704	PEG (46) ML 12704	ob45	43°54'10"	A ML 12704	0°01'10"	20.32 A	ML 12704	
PEG (46) ML 12704	IB (47) DPS 34508	ob46	125°47'10"	A ML 12704	0°01'10"	13.26 A	ML 12704	
IB (47) DPS 34508	IS XI DPS 34508	ob47	128°04'10"	A DPS 34508	0°01'10"	11.28 A	DPS 34508	
PEG 1 DP 501652	UNMK 72 DP 501652	ob37	203°03'00"	A DP 501652	0°00'00"	22.03 A	DP 501652	Class B
UNMK 72 DP 501652	UNMK 73 DP 501652	ob48	203°03'00"	A DP 501652	0°00'00"	3.00 A	DP 501652	Class B
UNMK 73 DP 501652	PEG 2 DP 501652	ob49	203°03'00"	A DP 501652	0°00'00"	10.62 A	DP 501652	Class B
PEG 2 DP 501652	UNMK 15 DP 501652	ob50	203°18'00"	A DP 501652	0°00'00"	33.00 A	DP 501652	Class B
UNMK 15 DP 501652	UNMK 16 DP 501652	ob51	203°18'00"	A DP 501652	0°00'00"	13.60 A	DP 501652	Class B
UNMK 16 DP 501652	DISK 1 DP 501652	ob52	203°18'00"	A DP 501652	0°00'00"	14.82 A	DP 501652	Class B
DISK 1 DP 501652	IR 2 DP 501652	ob54	111°18'20"	A DP 501652	0°00'00"	3.30 A	DP 501652	
IR 1 DP 501652	DISK 1 DP 501652	ob8	237°44'00"	M		133.80 M		
DISK 1 DP 501652	DISK 3 DP 501652	ob55	226°44'00"	A DP 501652	0°00'00"	25.29 A	DP 501652	Class B
DISK 3 DP 501652	UNMK 7 DP 567375	ob56	226°44'00"	A DP 501652	0°00'00"	48.01 C		Class BD
UNMK 7 DP 567375	UNMK 84 DP 501652	ob57	226°44'00"	A DP 501652	0°00'00"	4.99 C		Class BD

Mark and Vector

Survey Number DP 567375

Meridional Circuit Mount Eden 2000

From	To	Code	Bearing	Adpt Surv	Bearing Correction	Distance	Adpt Surv	Class
UNMK 84 DP 501652	IR 2 DP 501652	ob74	48°52'30"	A DP 501652	0°00'00"	79.76 A	DP 501652	
PEG 1 DP 567375	UNMK 4 DP 567375	ob33	202°12'00"	C		20.87 C		Class B
UNMK 4 DP 567375	UNMK 5 DP 567375	ob70	202°12'00"	C		3.00 C		Class B
UNMK 5 DP 567375	PEG 2 DP 567375	ob72	202°12'00"	C		71.83 C		Class B
PEG 2 DP 567375	PEG 3 DP 567375	ob58	202°12'00"	C		50.07 C		Class B
PEG 3 DP 567375	IR 1 DP 501652	ob59	70°34'30"	M		236.31 M		
PEG 3 DP 567375	UNMK 6 DP 567375	ob60	202°12'00"	C		3.83 C		Class BD
UNMK 6 DP 567375	IR 1 DP 501652	ob61	69°53'10"	C		238.86 C		
IR 1 DP 501652	UNMK (42) DPS 34508	ob9	276°45'15"	C		359.60 C		
IR 1 DP 501652	UNMK 7 DP 567375	ob10	233°50'45"	C		206.23 C		
UNMK 86 DP 501652	UNMK 88 DP 501652	ob31	203°58'00"	A DP 501652	0°00'00"	22.44 A	DP 501652	Class B
UNMK 88 DP 501652	UNMK 78 DP 501652	ob62	113°06'00"	A DP 501652	0°00'00"	3.01 A	DP 501652	Class B
UNMK 78 DP 501652	UNMK 85 DP 501652	ob64	23°58'00"	A DP 501652	0°00'00"	22.49 A	DP 501652	Class B
UNMK 16 DP 501652	UNMK 87 DP 501652	ob53	10°32'30"	A DP 501652	0°00'00"	58.64 A	DP 501652	Class B
UNMK 87 DP 501652	UNMK 19 DP 501652	ob67	113°06'00"	A DP 501652	0°00'00"	3.08 A	DP 501652	Class B
UNMK 19 DP 501652	UNMK 15 DP 501652	ob68	190°32'30"	A DP 501652	0°00'00"	44.70 A	DP 501652	Class B
UNMK 88 DP 501652	UNMK 87 DP 501652	ob63	197°57'00"	A DP 501652	0°00'00"	3.01 A	DP 501652	Class B
UNMK 78 DP 501652	UNMK 19 DP 501652	ob65	196°35'00"	A DP 501652	0°00'00"	3.02 A	DP 501652	Class B
UNMK 78 DP 501652	UNMK 72 DP 501652	ob66	113°12'00"	A DP 501652	0°00'00"	10.16 A	DP 501652	Class B
UNMK 19 DP 501652	UNMK 73 DP 501652	ob69	113°12'00"	A DP 501652	0°00'00"	9.82 A	DP 501652	Class B
UNMK 83 DP 501652	UNMK 4 DP 567375	ob35	113°14'00"	A DP 501652	0°00'00"	169.36 C		Class B
UNMK 80 DP 501652	UNMK 5 DP 567375	ob41	113°14'00"	A DP 501652	0°00'00"	169.39 C		Class B
UNMK 4 DP 567375	UNMK 88 DP 501652	ob71	113°14'00"	A DP 501652	0°00'00"	87.05 C		Class B

Mark and Vector

Survey Number DP 567375

Meridional Circuit Mount Eden 2000

From	To	Code	Bearing	Adpt Surv	Bearing Correction	Distance	Adpt Surv	Class
UNMK 5 DP 567375	UNMK 87 DP 501652	ob73	113°14'00" A	DP 501652	0°00'00"	87.27 C		Class B

Mark Name	Mark Condition	Description
DISK 1 DP 501652		Disk on top of post 1.1m AGL
DISK 3 DP 501652		Disk on top of post 1.1 AGL
IR 1 DP 501652		In berm, down 0.30m. See finder diag. DP 501652
IT 3 DP 501652		In paddock, down 0.3m, approx. 2m south of field drain
IT X DPS 34508		In paddock, down 0.25m. See finder diag. DP 501652
IT XIII LTS 78930		20mm iron tube buried in berm.
PEG (29) SO 43096	Searched For and Not Found	

*** End of Report ***

Schedule / Memorandum

Land Registration District

South Auckland

Survey Number

LT 567375

Territorial Authority (the Council)

Ruapehu District

Schedule of Existing Easements in Gross

Last Edited: 22 Mar 2022 13:14:57

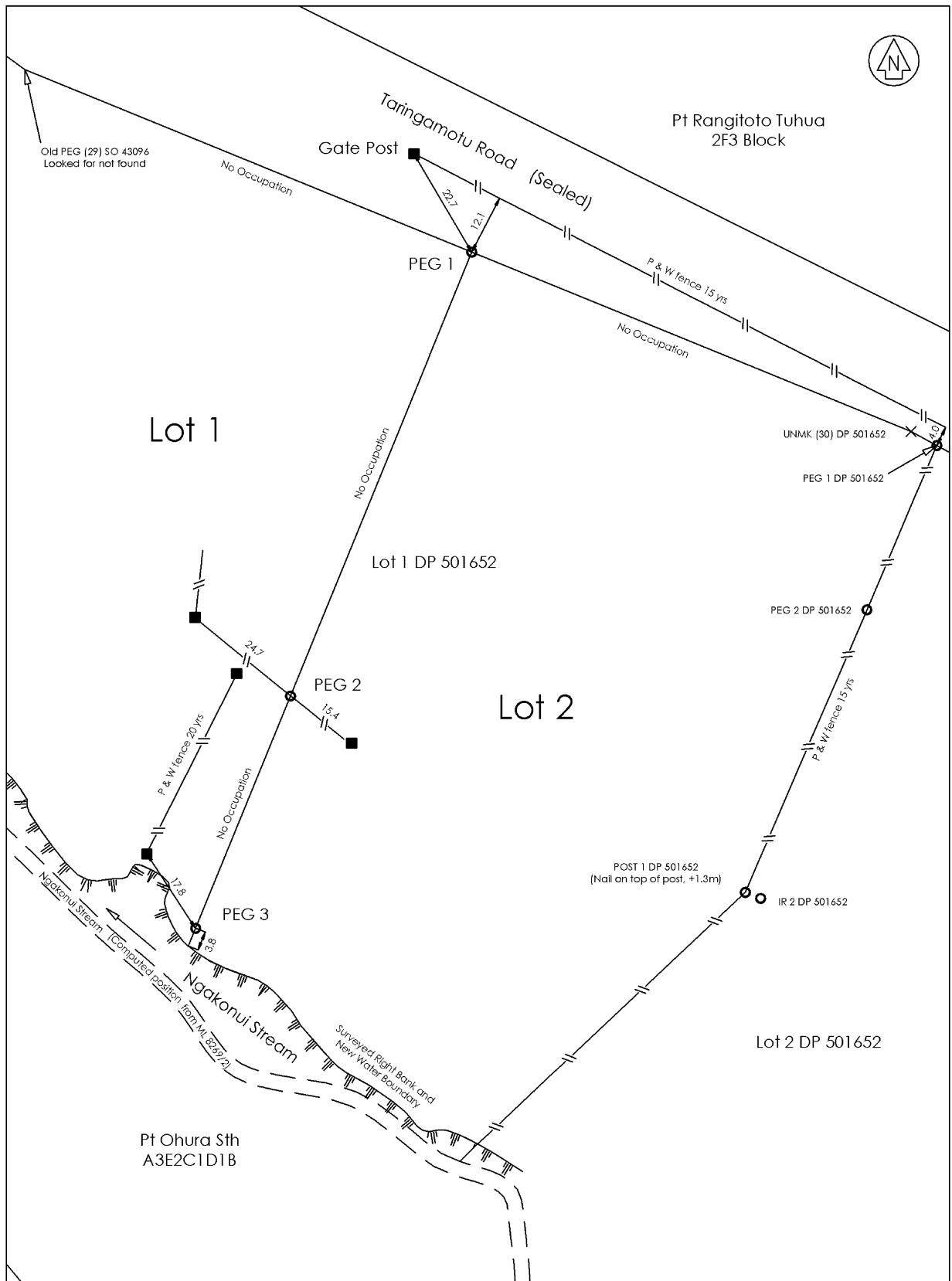
<u>Purpose</u>	<u>Shown</u>	<u>Burdened Land</u> <u>(Servient Tenement)</u>	<u>Creating Document Reference</u>
Right to convey electricity	X	Lot 1	E 10859414.3
	A, F, G	Lot 2	E 10859414.3

Schedule of Existing Easements

Last Edited: 22 Mar 2022 13:12:31

<u>Purpose</u>	<u>Shown</u>	<u>Burdened Land</u> <u>(Servient Tenement)</u>	<u>Creating Document Reference</u>
Right to convey electricity	B	Lot 2	E 10859414.5
	E	Lot 2	E 10859414.4

Occupation Diagram



Drawn | C.J.Olm | 13/12/21 | CJO | Checked | D.Sherill | 13/12/21 | DS | Approved | D.Sherill | 13/12/21 | DS | Scale | 1:1000



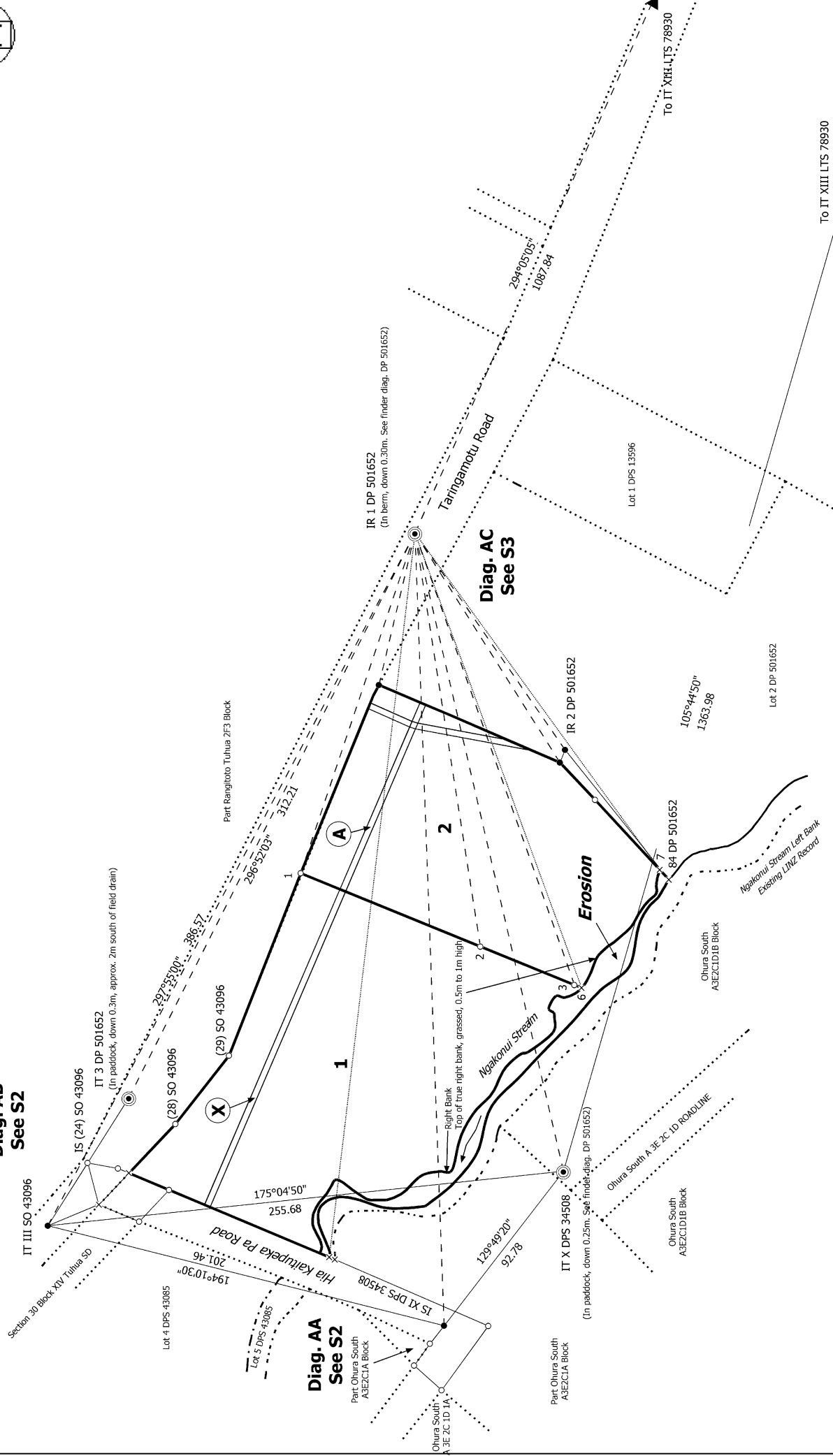
Jacki Sinclair
963 Taringamotu Road
Taumarunui

Drawing Number | 210236-Occ | Rev | A

Diag. A



**Diag. AB
See S2**



Lots 1 & 2 being a Subdivision of Lot 1 DP 501652

Land District: South Auckland

Digitally Generated Plan

Generated on: 01/07/2022 06:19am | Page 9 of 12

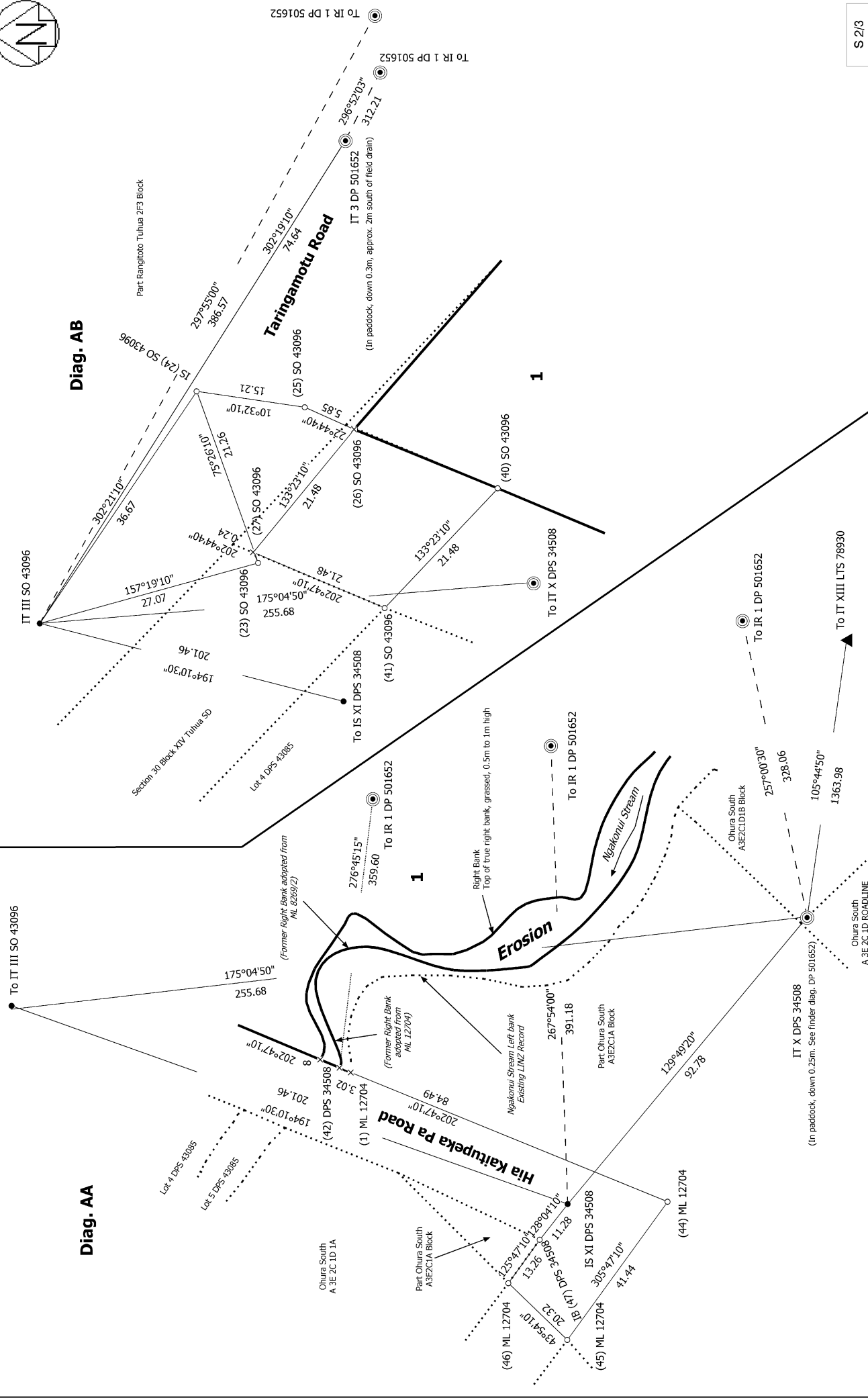
Surveyor: Dean Sherritt
Firm: Cheal Consultants Limited
Date of Survey: 14/12/2021

Record of Survey
DP 567375
Deposited on: 31/05/2022



Diag. AA

Diag. AB



S 2/3

Land District: South Auckland

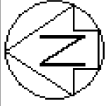
Lots 1 & 2 being a Subdivision of Lot 1 DP 501652

Surveyor: Dean Sherrin
Firm: Cheal Consultants Limited
Date of Survey: 14/12/2021

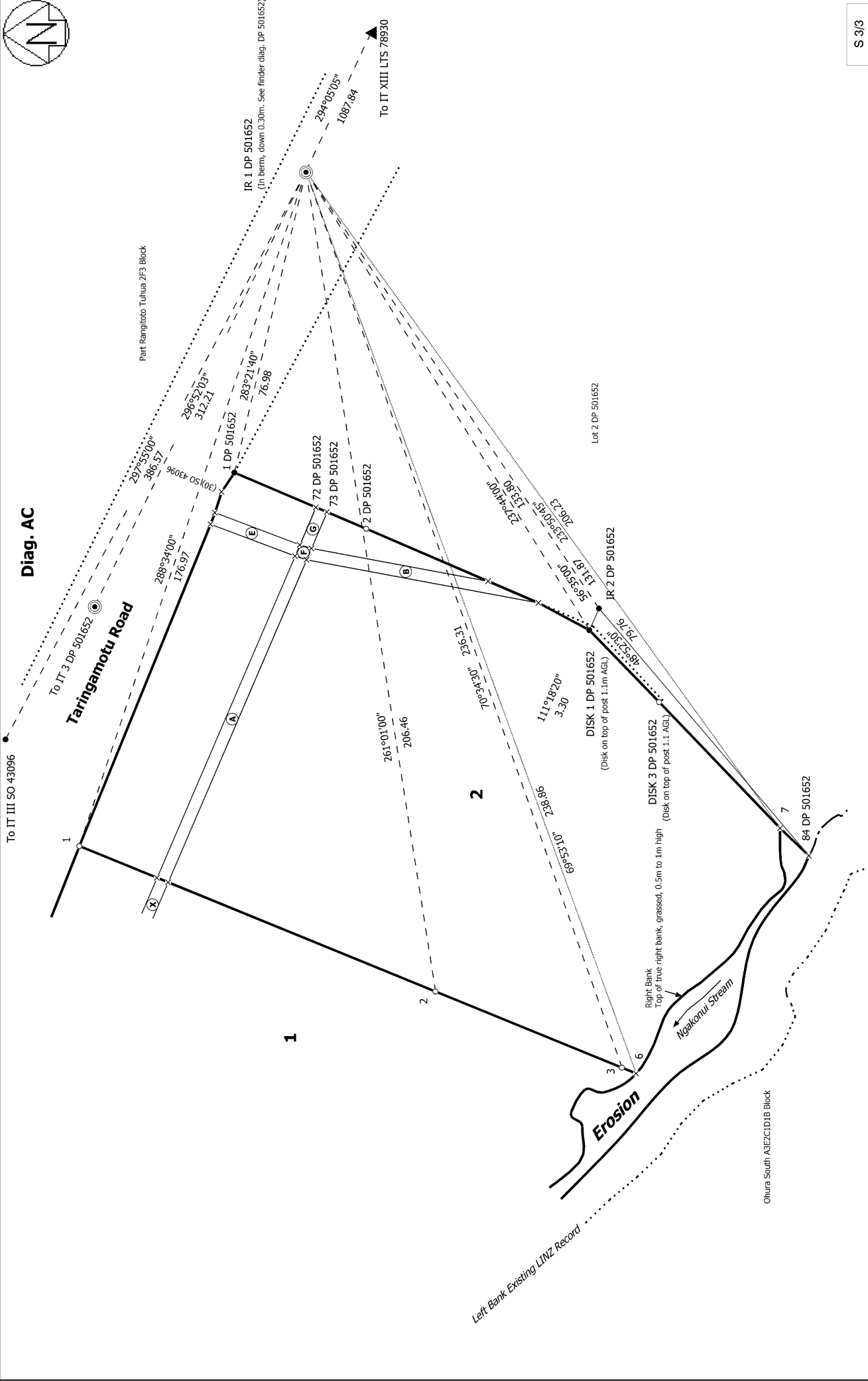
Record of Survey
DP 567375

Digitally Generated Plan
Generated on: 01/07/2022 06:13:01 Page 10 of 12

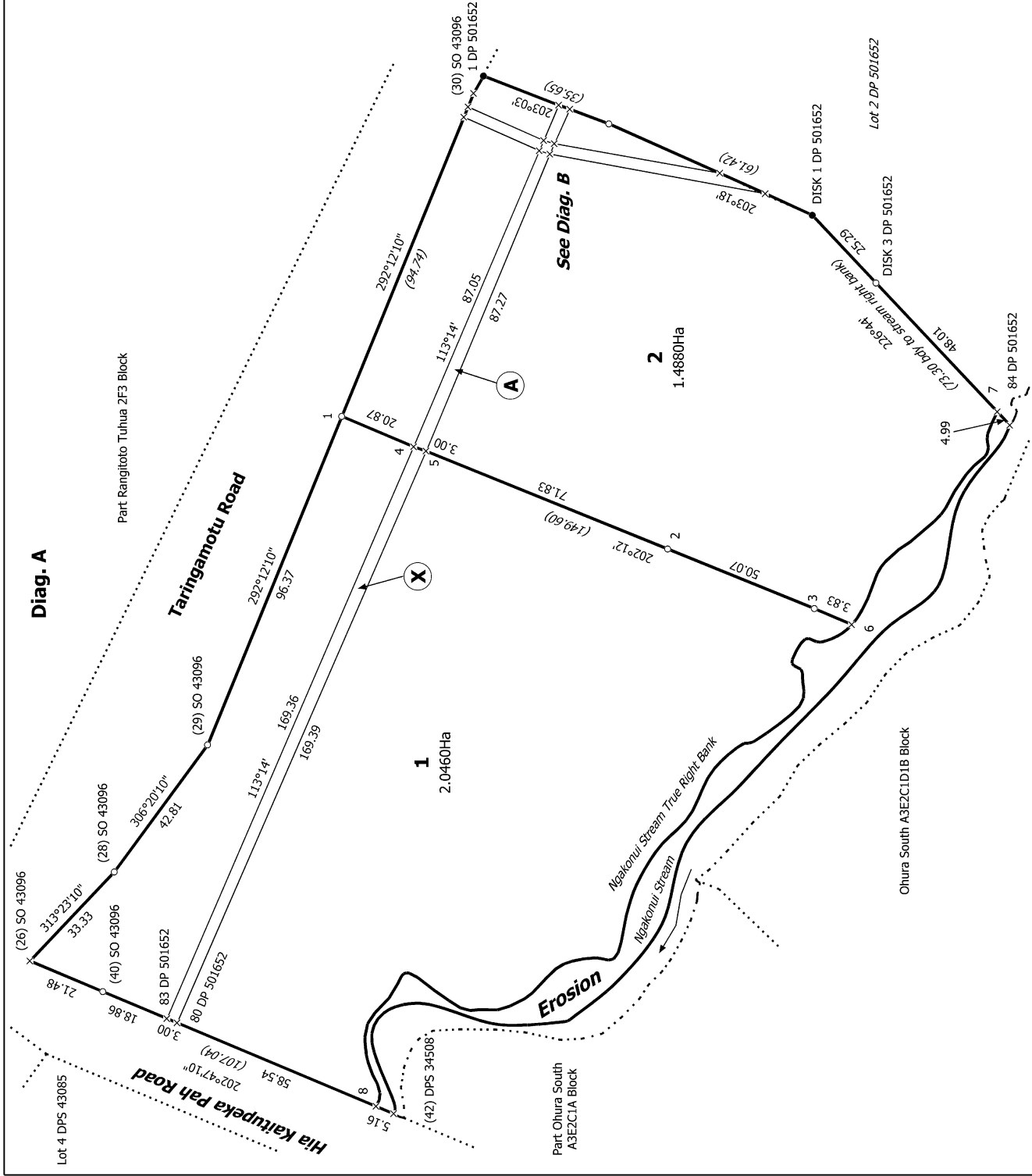
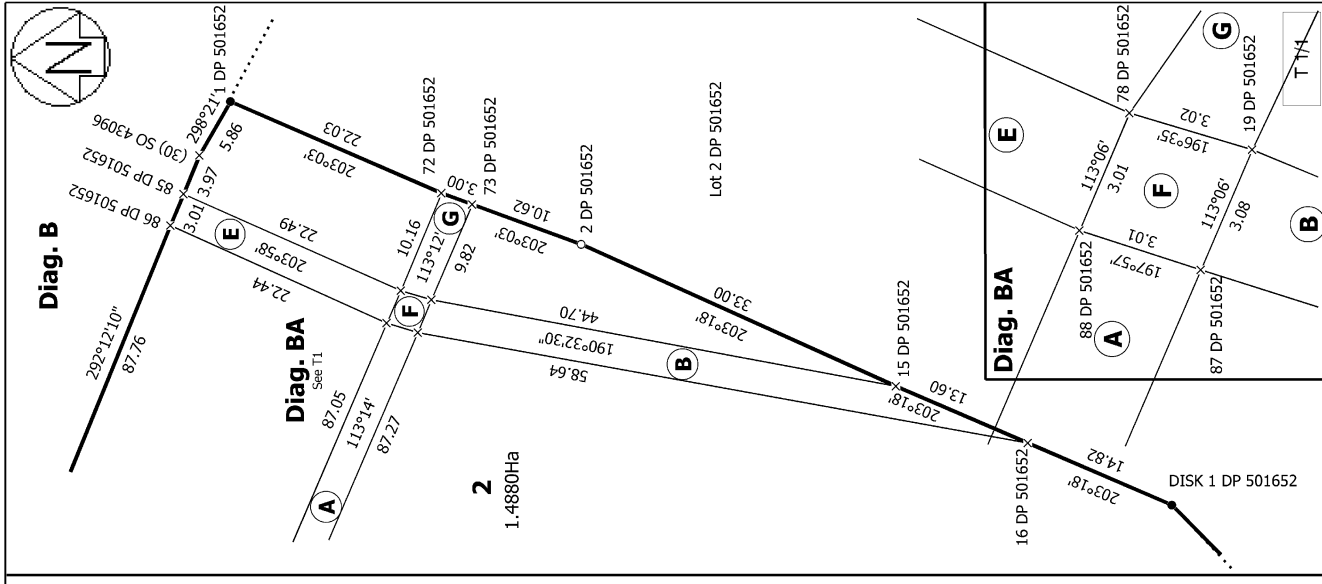
Deposited on: 31/05/2022



Diag. AC



Land District: South Auckland	Surveyor: Dean Sherrit Firm: Cheal Consultants Limited Date of Survey: 14/12/2021	Record of Survey DP 567375	Deposited on: 31/05/2022
<p style="text-align: center;">Lots 1 & 2 being a Subdivision of Lot 1 DP 501652</p>		<p style="text-align: center;">Digitally Generated Plan Generated on: 07/07/2022 06:19am Page 11 of 12</p>	



Record of Survey
 DP 567375
 Deposited on: 31/05/2022

Surveyor: Dean Sherritt
 Firm: Cheal Consultants Limited
 Date of Survey: 14/12/2021

Lots 1 & 2 being a Subdivision of Lot 1 DP 501652

Land District: South Auckland
 Digitally Generated Plan
 Generated on: 07/07/2022 06:19am | Page 12 of 12