

# Record of Survey - DP 571279

**Survey Number** DP 571279  
**Surveyor Reference** 202031 Schoonderwoerd  
**Surveyor** Murray Trevor Scandlyn  
**Survey Firm** Scandlyn Surveying Ltd  
**Surveyor Declaration** I Murray Trevor Scandlyn, being a licensed cadastral surveyor, certify that--  
 (a) this dataset provided by me and its related survey are accurate, correct and in accordance with the Cadastral Survey Act 2002 and Cadastral Survey Rules 2021; and  
 (b) the survey was undertaken by me or under my personal direction.  
 Declared on 02 Feb 2023 06:54 PM

## Survey Details

<b>Dataset Description</b>	Lots 1-2 being subdivision Pt. RS 2777		
<b>Purpose</b>	Limited Title		
<b>Status</b>	Deposited	<b>Type</b>	Survey
<b>Land District</b>	Canterbury	<b>Survey Class</b>	Class A
<b>Meridional Circuit</b>	Mount Pleasant 2000	<b>Vertical Datum</b>	None

## Survey Dates

<b>Surveyed Date</b>	07/12/2021	<b>Certified Date</b>	02/02/2023
<b>Submitted Date</b>	02/02/2023 18:54:15	<b>Survey Approval Date</b>	03/02/2023
<b>Deposit Date</b>	18/01/2023		

## Referenced Surveys

Survey Number	Land District	Bearing Correction
DP 19873	Canterbury	0°00'00"
DP 33752	Canterbury	0°00'00"
DP 57380	Canterbury	0°00'00"
DP 34530	Canterbury	0°00'00"
DP 451231	Canterbury	0°00'00"
DP 459207	Canterbury	0°00'00"
DP 490464	Canterbury	0°00'00"
DP 507061	Canterbury	0°00'00"
DP 542055	Canterbury	0°00'00"
SO 10207	Canterbury	0°00'00"

## Territorial Authorities

Waimakariri District

## Comprised In

RT CB633/54 Ltd

## Created Parcels

Parcels	Parcel Intent	Area	RT Reference
Area A Deposited Plan 571279	Easement		
Lot 1 Deposited Plan 571279	Fee Simple Title	0.3170 Ha	1034638



# Record of Survey - DP 571279

---

## Created Parcels

Parcels	Parcel Intent	Area	RT Reference
Lot 2 Deposited Plan 571279	Fee Simple Title	0.0807 Ha	1034639
<b>Total Area</b>		<u>0.3977 Ha</u>	

# Mark and Vector

Survey Number DP 571279

Meridional Circuit Mount Pleasant 2000

From	To	Code	Bearing	Adpt Surv	Bearing Correction	Distance	Adpt Surv	Class
IT I SO 10207	IS II DP 41502	ob0	331°10'30"	A DP 451231	0°00'00"	46.56 A	DP 451231	
IS II DP 41502	IS I DP 451231	ob2	331°10'30"	A DP 451231	0°00'00"	21.52 A	DP 451231	
IS I DP 451231	IS XIX SO 10207	ob3	331°10'30"	A DP 451231	0°00'00"	57.56 A	DP 451231	
IS XIX SO 10207	IS II DP 30311	ob5	60°15'00"	A DP 57380	0°00'00"	62.09 A	DP 57380	
IS II DP 30311	IT I SO 10207	ob7	60°15'00"	A DP 57380	0°00'00"	69.37 A	DP 57380	
IT I SO 10207	IS IV DP 3475	ob9	60°15'00"	A DP 57380	0°00'00"	105.58 A	DP 57380	
IS IV DP 3475	IS 3 DP 459207	ob10	60°15'00"	A DP 459207	0°00'00"	51.35 A	DP 459207	
IS 3 DP 459207	IS I DP 58195	ob11	60°15'00"	A DP 490464	0°00'00"	17.02 A	DP 459207	
IS I DP 58195	IS I DP 19873	ob1	60°15'00"	A DP 490464	0°00'00"	38.66 A	DP 19873	
IS I DP 19873	IT I DP 50600	ob13	60°15'00"	A DP 459207	0°00'00"	140.07 A	DP 34530	
IT I DP 50600	IT IV DP 19873	ob12	150°12'00"	A DP 507061	0°00'00"	125.61 A	DP 507061	
IT IV DP 19873	IS I DP 318564	ob14	205°58'55"	M		243.30 M		
IS I DP 318564	IR II DP 542055	ob15	265°20'00"	M		217.54 M		
IR II DP 542055	IT I SO 10207	ob16	267°10'00"	A DP 542055	0°00'00"	98.88 A	DP 542055	
IR II DP 542055	IS I DP 451231	ob17	292°35'30"	M		142.52 M		
IS I DP 451231	SN 1014 DP 571279	ob4	337°22'50"	M		51.52 M		
SN 1014 DP 571279	SN 1015 DP 571279	ob18	55°55'00"	M		48.79 M		
SN 1015 DP 571279	IS I DP 33752	ob20	19°48'10"	M		97.17 M		
IS I DP 33752	IT I DP 57380	ob25	59°42'00"	A DP 57380	0°00'00"	105.71 A	DP 57380	
IT I DP 57380	IS IV DP 3475	ob26	147°12'20"	A DP 57380	0°00'00"	61.36 A	DP 57380	
SN 1015 DP 571279	IS II DP 30311	ob21	41°13'00"	M		8.44 M		
IS XIX SO 10207	IT IV SO 10207	ob6	240°15'00"	A DP 57380	0°00'00"	26.97 A	DP 57380	
IT IV SO 10207	IS VIII SO 10207	ob27	28°19'00"	A SO 10207	0°00'00"	47.70 A	SO 10207	
IS VIII SO 10207	IT V SO 10207	ob28	28°19'00"	A SO 10207	0°00'00"	65.20 A	SO 10207	
IT V SO 10207	IS I DP 33752	ob29	59°42'00"	M		59.23 M		
SN 1014 DP 571279	IT V SO 10207	ob19	14°01'00"	M		91.61 M		
IS II DP 30311	PEG 1022 DP 571279	ob8	257°33'00"	A DP 57380	0°00'00"	16.91 A	DP 57380	
PEG 1022 DP 571279	PEG 1023 DP 571279	ob31	60°15'00"	A DP 57380	0°00'00"	18.30 C		Class A
PEG 1023 DP 571279	PEG 1024 DP 571279	ob33	60°15'00"	A DP 57380	0°00'00"	62.17 C		Class A
PEG 1024 DP 571279	IT I SO 10207	ob35	105°06'00"	A DP 33752	0°00'00"	7.13 A	DP 33752	
PEG 1022 DP 571279	PEG 1025 DP 571279	ob32	330°15'00"	A DP 57380	0°00'00"	38.77 A	DP 57380	Class A

# Mark and Vector

Survey Number DP 571279

Meridional Circuit Mount Pleasant 2000

From	To	Code	Bearing	Adpt Surv	Bearing Correction	Distance	Adpt Surv	Class
PEG 1025 DP 571279	IT V SO 10207	ob37	25°26'00"	A DP 57380	0°00'00"	27.88 A	DP 57380	
PEG 1025 DP 571279	PEG 1026 DP 571279	ob38	29°52'00"	A DP 57380	0°00'00"	21.21 C		Class A
PEG 1026 DP 571279	PEG 1027 DP 571279	ob39	29°52'00"	A DP 57380	0°00'00"	3.41 C		Class A
UNMK 2 DP 571279	PEG 1028 DP 571279	ob57	60°25'00"	A DP 57380	0°00'00"	18.85 C		Class A
PEG 1028 DP 571279	IS I DP 33752	ob41	354°49'00"	A DP 57380	0°00'00"	4.61 A	DP 57380	
PEG 1024 DP 571279	UNMK 3 DP 571279	ob36	329°59'00"	A DP 33752	0°00'00"	17.70 C		Class A
PEG 1023 DP 571279	PEG 1026 DP 571279	ob34	330°15'20"	C		49.50 C		Class A
SN 1015 DP 571279	SN 1029 DP 571279	ob22	73°50'20"	M		20.08 M		
SN 1029 DP 571279	IR 6 DP 571279	ob47	308°39'00"	M		45.65 M		
IR 6 DP 571279	SN 1015 DP 571279	ob49	154°21'40"	M		37.83 M		
SN 1029 DP 571279	SN 1031 DP 571279	ob48	59°40'00"	M		31.16 M		
SN 1031 DP 571279	SN 1032 DP 571279	ob50	60°23'20"	M		13.30 M		
SN 1032 DP 571279	IS I DP 33752	ob51	338°38'50"	M		68.20 M		
SN 1032 DP 571279	IT IV DP 19873	ob52	78°10'30"	M		384.81 M		
IT V SO 10207	PEG 1027 DP 571279	ob30	175°45'00"	A DP 57380	0°00'00"	3.84 A	DP 57380	
SN 1032 DP 571279	PEG 1024 DP 571279	ob53	4°26'40"	M		14.77 M		
SN 1015 DP 571279	PEG 1022 DP 571279	ob23	283°50'00"	M		11.29 M		
SN 1015 DP 571279	PEG 1023 DP 571279	ob24	22°41'00"	M		12.77 M		
UNMK 1 DP 571279	UNMK 2 DP 571279	ob54	60°25'00"	A DP 57380	0°00'00"	7.69 C		Class A
PEG 1027 DP 571279	UNMK 1 DP 571279	ob40	60°25'00"	A DP 57380	0°00'00"	32.42 C		Class A
UNMK 4 DP 571279	PEG 1028 DP 571279	ob59	329°59'00"	A DP 33752	0°00'00"	23.69 C		Class A
UNMK 3 DP 571279	UNMK 4 DP 571279	ob58	329°59'00"	A DP 33752	0°00'00"	9.67 C		Class A
UNMK 1 DP 571279	UNMK 3 DP 571279	ob55	111°38'00"	C		42.79 C		Class A
UNMK 2 DP 571279	UNMK 4 DP 571279	ob56	111°38'00"	C		30.39 C		Class A

# Mark and Vector

Survey Number DP 571279

Meridional Circuit Mount Pleasant 2000

From	To	Code	Bearing	Adpt Surv	Bearing Correction	Distance	Adpt Surv	Class
SN 1029 DP 571279	IT I SO 10207	ob42	52°54'00" M			58.30 M		
SN 1029 DP 571279	PEG 1028 DP 571279	ob43	9°49'00" M			82.44 M		
SN 1029 DP 571279	PEG 1027 DP 571279	ob44	324°28'10" M			64.05 M		
SN 1029 DP 571279	PEG 1026 DP 571279	ob45	321°38'10" M			62.70 M		
SN 1029 DP 571279	PEG 1025 DP 571279	ob46	301°52'30" M			58.27 M		

Mark Name	Mark Condition	Description
IR 6 DP 571279		IR d0.3
IR II DP 542055		fl at edge of seal
IS 3 DP 459207		0.1 D in metal driveway
IS I DP 318564		fl.
IS I DP 33752		D 0.3
IS I DP 451231		Flush in seal
IS II DP 41502		0.3 D
IT I DP 50600		IT 0.3m down in shingle parking area
IT I SO 10207		IT 0.3m down in sealed driveway
IT I SO 10207		D 0.3 in driveway
IT IV DP 19873		D 0.2
IT V SO 10207		D 0.1
PEG 1022 DP 571279		PEG (1) DP 57380 reinstated
PEG 1024 DP 571279		Peg VI DP 33752 reinstated
PEG 1025 DP 571279		Peg SO 10207 reinstated
PEG 1027 DP 571279		Peg DP 57380 reinstated
PEG 1028 DP 571279		Peg III DP 33752
SN 1014 DP 571279		Fl in seal
SN 1015 DP 571279		Fl in seal
SN 1029 DP 571279		Fl in seal
SN 1031 DP 571279		Fl in seal
SN 1032 DP 571279		Fl in seal

\*\*\* End of Report \*\*\*

# Schedule / Memorandum

---

Land Registration District

**Canterbury**

Survey Number

**LT 571279**

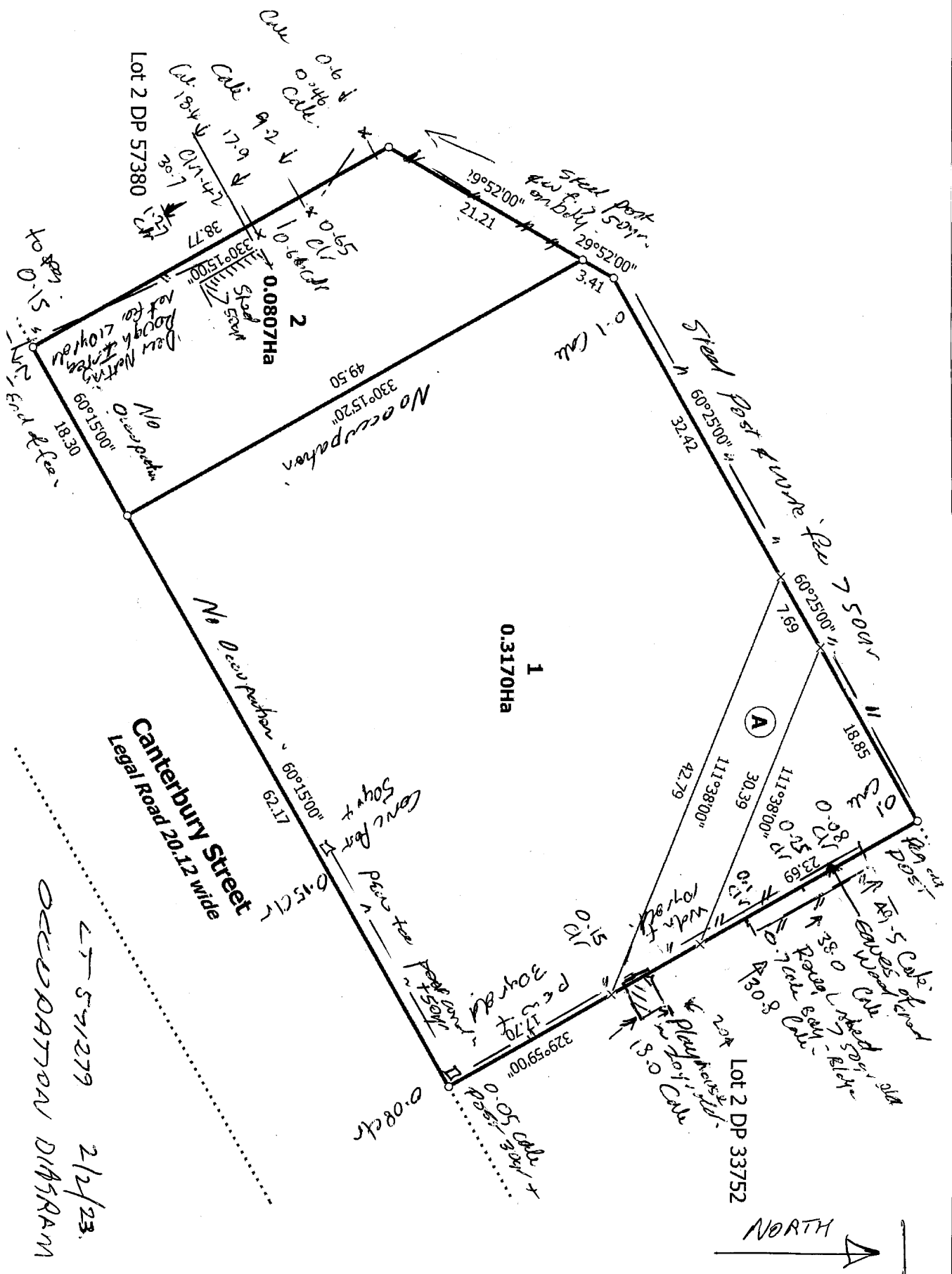
Territorial Authority (the Council)

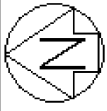
**Waimakariri District**

## Memorandum of Easements in Gross

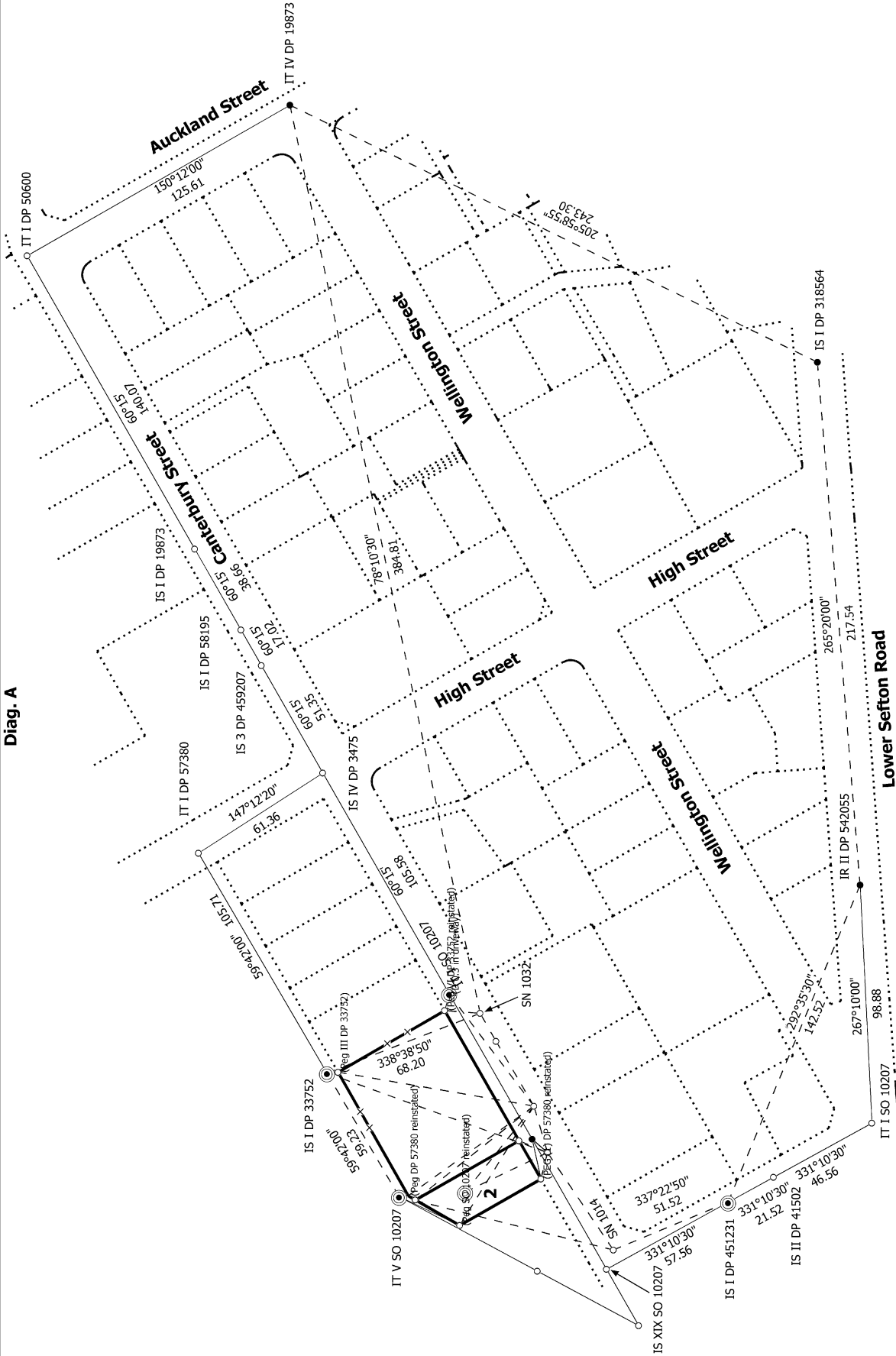
Last Edited: 09 Dec 2021 18:39:35

<u>Purpose</u>	<u>Shown</u>	<u>Burdened Land</u> <u>(Servient Tenement)</u>	<u>Grantee</u>
Right to convey electricity	A	Lot 1	Mainpower NZ Ltd





Diag. A



Land District: Canterbury

**Digitally Generated Plan**  
Generated on: 14/02/2023 06:08am | Page 8 of 11

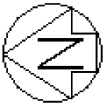
Lots 1-2 being subdivision Pt. RS 2777

Surveyor: Murray Trevor Scandlyn  
Firm: Scandlyn Surveying Ltd  
Date of Survey: 7/12/2021

Record of Survey  
DP 571279

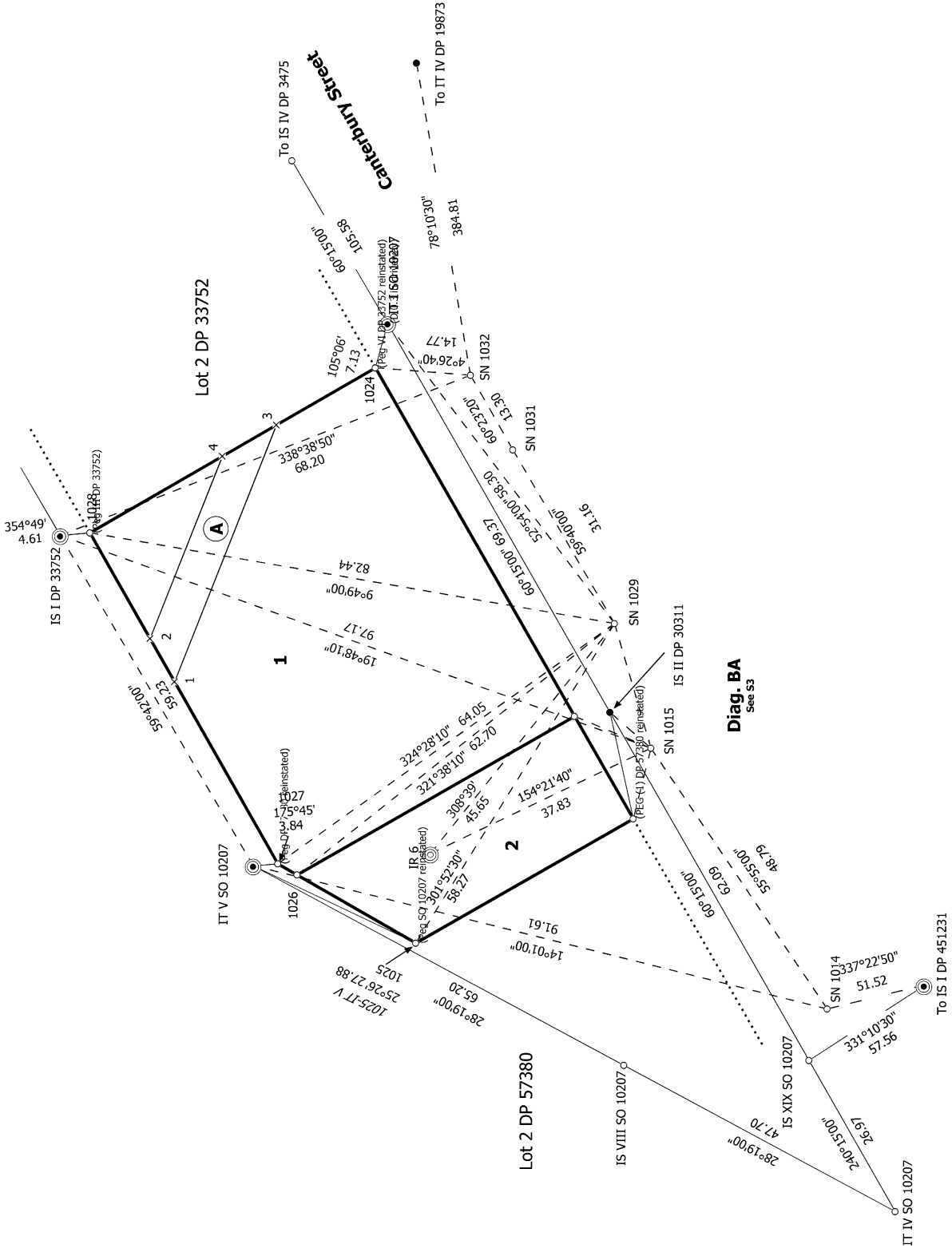
Deposited on: 18/01/2023





Diag. B

To IT I DP 57380  
55°27'00" 11.501



S 2/3

Land District: Canterbury

**Digitally Generated Plan**  
Generated on: 14/02/2023 06:08am | Page 9 of 11

**Lots 1-2 being subdivision Pt. RS 2777**

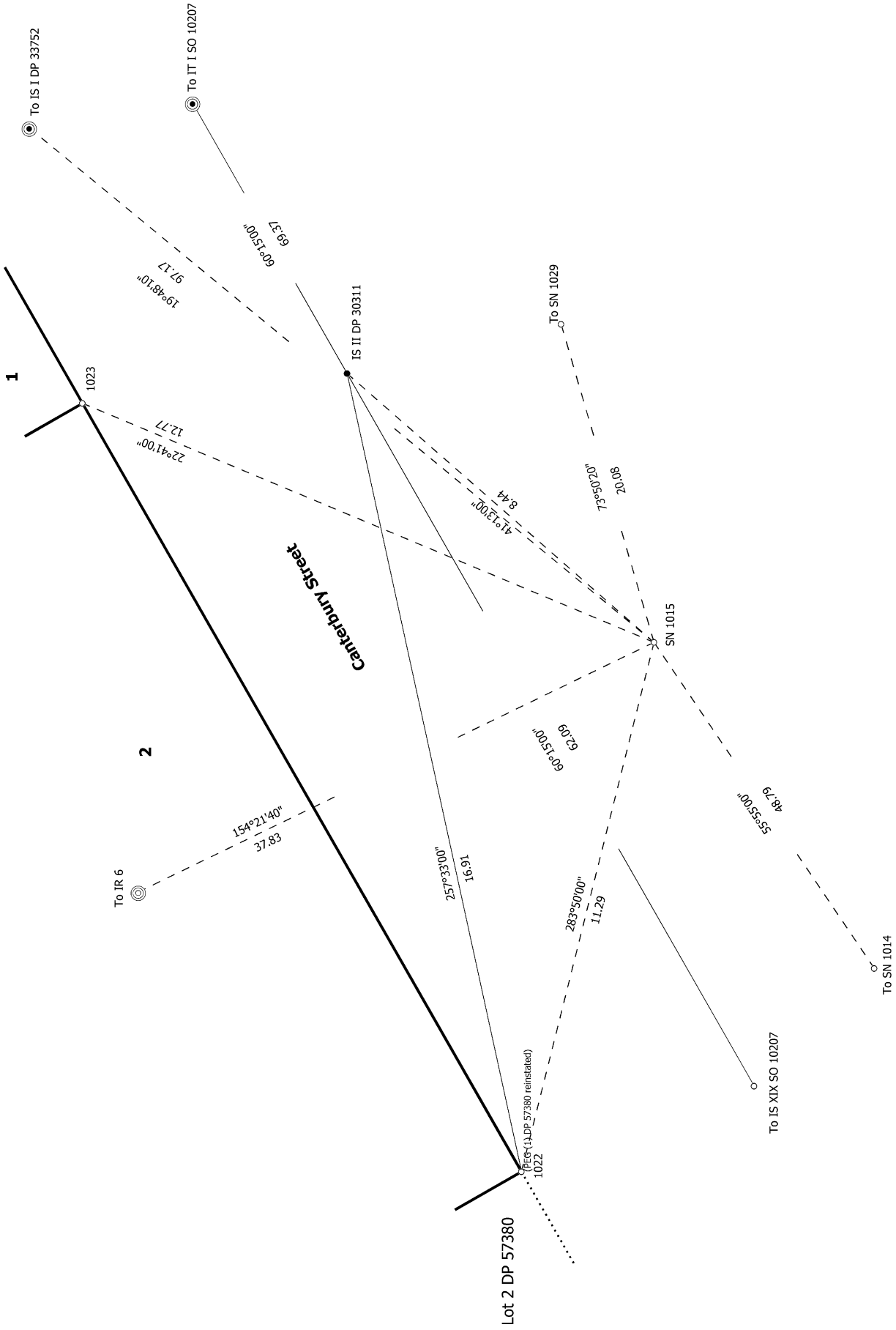
Surveyor: Murray Trevor Scandlyn  
Firm: Scandlyn Surveying Ltd  
Date of Survey: 7/12/2021

**Record of Survey  
DP 571279**

Deposited on: 18/01/2023



Diag. BA



S 3/3

Land District: Canterbury

Digitally Generated Plan

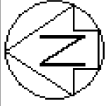
Generated on: 14/02/2023 06:08am Page 10 of 11

Lots 1-2 being subdivision Pt. RS 2777

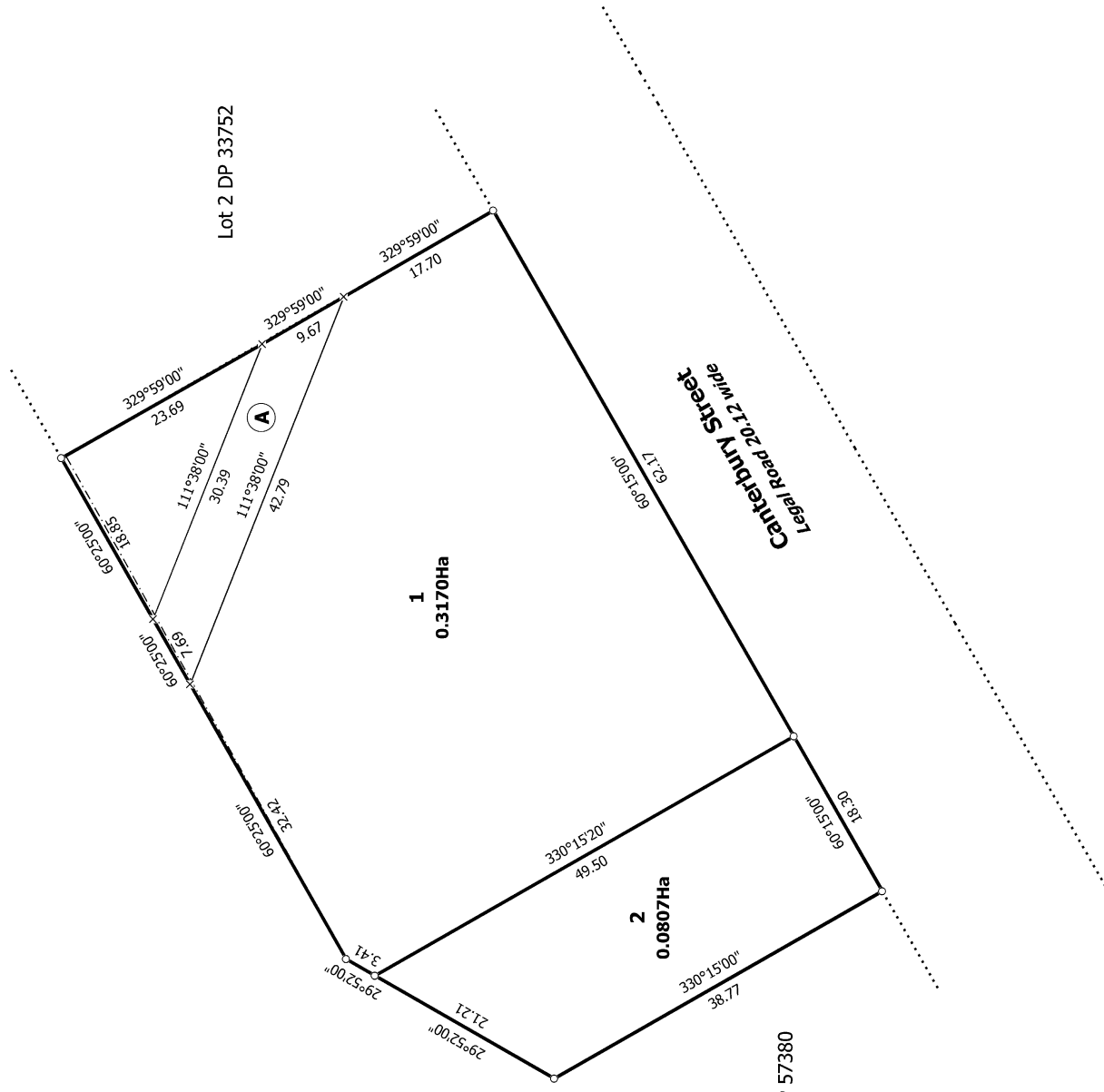
Surveyor: Murray Trevor Scandlyn  
Firm: Scandlyn Surveying Ltd  
Date of Survey: 7/12/2021

Record of Survey  
DP 571279

Deposited on: 18/01/2023



Diag. A



T 1/1

Land District: Canterbury	Record of Survey DP 571279
<b>Digitally Generated Plan</b> Generated on: 14/02/2023 06:08am   Page 11 of 11	Surveyor: Murray Trevor Scandlyn Firm: Scandlyn Surveying Ltd Date of Survey: 7/12/2021
Lots 1-2 being subdivision Pt. RS 2777	Deposited on: 18/01/2023