

# Record of Survey - DP 571962

**Survey Number** DP 571962  
**Surveyor Reference** 5634 - 77A Eco Pl  
**Surveyor** Samuel Millar Lynds  
**Survey Firm** Aurum Survey Consultants Ltd (Queenstown)  
**Surveyor Declaration** I Samuel Millar Lynds, being a licensed cadastral surveyor, certify that--  
 (a) this dataset provided by me and its related survey are accurate, correct and in accordance with the Cadastral Survey Act 2002 and Cadastral Survey Rules 2021; and  
 (b) the survey was undertaken by me or under my personal direction.  
 Declared on 25 Jul 2022 11:21 AM

## Survey Details

<b>Dataset Description</b>	Lot 1 & 2 being a subdivision of Lots 6 & 15 DP 316962		
<b>Purpose</b>	LT Subdivision		
<b>Status</b>	Deposited	<b>Type</b>	Survey
<b>Land District</b>	Nelson	<b>Survey Class</b>	Class B
<b>Meridional Circuit</b>	Karamea 2000	<b>Vertical Datum</b>	None

## Survey Dates

<b>Surveyed Date</b>	22/12/2021	<b>Certified Date</b>	25/07/2022
<b>Submitted Date</b>	25/07/2022 11:21:11	<b>Survey Approval Date</b>	25/07/2022
<b>Deposit Date</b>	27/07/2022		

## Referenced Surveys

Survey Number	Land District	Bearing Correction
SO 12223	Nelson	0°00'30"
SO 6250	Nelson	0°00'30"
DP 316962	Nelson	0°00'30"
DP 349114	Nelson	0°00'30"

## Territorial Authorities

Buller District

## Comprised In

RT 66575  
RT 66584

## Created Parcels

Parcels	Parcel Intent	Area	RT Reference
Lot 1 Deposited Plan 571962	Fee Simple Title	15.5807 Ha	1037857
Lot 2 Deposited Plan 571962	Fee Simple Title	20.2222 Ha	1037858
Area A Deposited Plan 571962	Easement		
Area B Deposited Plan 571962	Easement		
<b>Total Area</b>		<u>35.8029 Ha</u>	

# Mark and Vector

Survey Number DP 571962

Meridional Circuit Karamea 2000

From	To	Code	Bearing	Adpt Surv	Bearing Correction	Distance	Adpt Surv	Class
IT IX SO 11761	IS 21 DP 316962	ob0	25°47'00"	A DP 316962	0°00'30"	166.37 A	DP 316962	
IS 21 DP 316962	IS 1 DP 571962	ob2	96°13'51" M			157.56 M		
IS 1 DP 571962	IT IX SO 11761	ob3	239°54'15" M			264.66 M		
IS 1 DP 571962	IS 2 DP 316962	ob4	3°23'35" M			716.33 M		
IS 2 DP 316962	IS VI SO 12223	ob8	186°48'00" A	DP 316962	0°00'30"	33.71 A	DP 316962	
IS VI SO 12223	IT 1 DP 316962	ob9	187°17'50" A	DP 316962	0°00'30"	358.03 A	DP 316962	
IT 1 DP 316962	IT X SO 11761	ob11	205°49'20" A	DP 316962	0°00'30"	104.53 A	DP 316962	
IT X SO 11761	IS 21 DP 316962	ob12	205°47'00" A	DP 316962	0°00'30"	239.11 A	DP 316962	
IS 1 DP 571962	IT SADDLE SO 12614	ob5	12°24'46" M			1,138.57 M		
IT SADDLE SO 12614	IT II DP 16665	ob13	250°56'20" A	DP 316962	0°00'30"	119.09 A	DP 316962	
IT II DP 16665	IT I DP 16665	ob15	200°09'10" A	DP 316962	0°00'30"	202.52 A	DP 316962	
IT I DP 16665	IS 2 DP 316962	ob16	186°48'00" A	DP 316962	0°00'30"	169.03 A	DP 316962	
IS 1 DP 571962	IT 3 DP 349114	ob6	171°15'45" M			402.90 M		
IT 3 DP 349114	IT 2 DP 349114	ob17	214°56'00" A	DP 349114	0°00'30"	95.68 A	DP 349114	
IT 2 DP 349114	IT 24 DP 316962	ob26	147°26'50" A	DP 349114	0°00'30"	65.29 A	DP 349114	
IT 24 DP 316962	PEG 24d DP 316962	ob18	250°22'30" A	DP 316962	0°00'30"	12.45 A	DP 316962	
PEG 24d DP 316962	PEG 24g DP 316962	ob21	335°57'30" A	DP 316962	0°00'30"	59.75 A	DP 316962	Class B
PEG 24g DP 316962	PEG 35 DP 316962	ob23	321°20'30" A	DP 316962	0°00'30"	381.14 A	DP 316962	Class B
PEG 35 DP 316962	IT IX SO 11761	ob30	4°04'30" A	DP 316962	0°00'30"	51.12 A	DP 316962	
PEG 35 DP 316962	PEG SO 6250	ob31	15°51'30" A	DP 316962	0°00'30"	42.27 A	DP 316962	Class B
PEG SO 6250	PEG 21a DP 316962	ob27	26°12'30" A	DP 316962	0°00'30"	171.93 A	DP 316962	Class B
PEG 21a DP 316962	IS 21 DP 316962	ob28	297°10'30" A	DP 316962	0°00'30"	12.88 A	DP 316962	
IT 24 DP 316962	PEG 24e DP 316962	ob19	306°18'30" A	DP 316962	0°00'30"	4.87 A	DP 316962	
PEG 24e DP 316962	PEG 24f DP 316962	ob32	335°57'30" A	DP 316962	0°00'30"	62.84 A	DP 316962	Class B
PEG 24f DP 316962	PEG 32a DP 316962	ob25	33°26'00" A	DP 316962	0°00'30"	395.44 A	DP 316962	Class B
PEG 32a DP 316962	PEG 21a DP 316962	ob34	292°08'30" A	DP 316962	0°00'30"	404.93 A	DP 316962	
PEG 21a DP 316962	PEG 2 DP 571962	ob29	80°12'30" C			202.27 C		Class B
PEG 2 DP 571962	PEG 32a DP 316962	ob35	136°47'00" C			256.64 C		Class B
IS VI SO 12223	PEG SO 12223	ob10	192°41'30" A	SO 12223	0°00'30"	51.46 A	SO 12223	
PEG SO 12223	PEG SO 6250	ob36	7°53'30" A	SO 12223	0°00'30"	254.52 A	SO 12223	

# Mark and Vector

Survey Number DP 571962

Meridional Circuit Karamea 2000

From	To	Code	Bearing	Adpt Surv	Bearing Correction	Distance	Adpt Surv	Class
PEG SO 6250	PEG 10 SO 6250	ob37	102°46'30"	A SO 6250	0°00'30"	10.09 A	SO 6250	
PEG 10 SO 6250	PEG SO 6250	ob38	187°53'30"	A SO 6250	0°00'30"	167.09 A	SO 6250	
PEG SO 6250	PEG SO 6250	ob39	90°00'30"	A SO 6250	0°00'30"	10.61 A	SO 6250	
PEG SO 6250	PEG SO 6250	ob40	198°28'30"	A SO 6250	0°00'30"	2.43 A	SO 6250	Class B
PEG SO 6250	PEG SO 6250	ob42	187°53'30"	A SO 6250	0°00'30"	404.33 A	SO 6250	Class B
PEG SO 6250	PEG 21a DP 316962	ob43	206°12'30"	A DP 316962	0°00'30"	336.33 A	DP 316962	Class B
IT 24 DP 316962	IS 25 DP 316962	ob20	141°08'10"	A DP 316962	0°00'30"	64.93 A	DP 316962	
IS 25 DP 316962	IT 26 DP 316962	ob44	71°50'30"	A DP 316962	0°00'30"	142.65 A	DP 316962	
IT 26 DP 316962	IS 27 DP 316962	ob45	137°37'10"	A DP 316962	0°00'30"	199.22 A	DP 316962	
IS 27 DP 316962	IT 14 DP 316962	ob46	322°25'10"	A DP 316962	0°00'30"	99.26 A	DP 316962	
IT 14 DP 316962	IS 15 DP 316962	ob47	14°26'10"	A DP 316962	0°00'30"	261.07 A	DP 316962	
IS 15 DP 316962	IT 16 DP 316962	ob48	357°25'00"	A DP 316962	0°00'30"	329.67 A	DP 316962	
IT 16 DP 316962	IS 32 DP 316962	ob49	97°04'40"	A DP 316962	0°00'30"	91.45 A	DP 316962	
IS 32 DP 316962	IS 33 DP 316962	ob50	205°49'30"	A DP 316962	0°00'30"	159.75 A	DP 316962	
IS 33 DP 316962	PEG 33a DP 316962	ob51	274°17'30"	A DP 316962	0°00'30"	49.39 A	DP 316962	
PEG 33a DP 316962	PEG 32a DP 316962	ob52	292°08'30"	A DP 316962	0°00'30"	90.47 A	DP 316962	Class BD
IT SADDLE SO 12614	IT 19 DP 316962	ob14	176°46'00"	A DP 316962	0°00'30"	503.43 A	DP 316962	
IT 19 DP 316962	IS 18 DP 316962	ob53	169°39'40"	A DP 316962	0°00'30"	163.63 A	DP 316962	
IS 18 DP 316962	IT 17 DP 316962	ob54	176°37'40"	A DP 316962	0°00'30"	184.00 A	DP 316962	
IT 17 DP 316962	IT 16 DP 316962	ob55	174°22'30"	A DP 316962	0°00'30"	290.22 A	DP 316962	
PEG SO 6250	PEG SO 6250	ob41	90°00'30"	A SO 6250	0°00'30"	151.94 A	SO 6250	Class B
PEG SO 6250	PEG SO 6250	ob56	193°37'30"	A SO 6250	0°00'30"	0.93 A	SO 6250	Class B
PEG SO 6250	PEG SO 6250	ob57	203°01'30"	A SO 6250	0°00'30"	66.06 A	SO 6250	Class B
PEG SO 6250	UNMARKED SO 6250	ob58	162°11'30"	A SO 6250	0°00'30"	184.09 A	SO 6250	Class BD
UNMARKED SO 6250	IS 18 DP 316962	ob59	116°37'00"	C		67.94 C		
PEG 24e DP 316962	PEG 24c DP 316962	ob33	137°50'00"	A DP 316962	0°00'30"	20.00 A	DP 316962	Class B
PEG 24c DP 316962	PEG 24b DP 316962	ob60	227°50'00"	A DP 316962	0°00'30"	10.02 A	DP 316962	Class B
PEG 24b DP 316962	PEG 24a DP 316962	ob61	227°50'00"	A DP 316962	0°00'30"	118.15 A	DP 316962	Class B
PEG 24a DP 316962	PEG 23f DP 316962	ob62	227°50'00"	A DP 316962	0°00'30"	127.74 A	DP 316962	Class B
PEG 23f DP 316962	PEG 23d DP 316962	ob63	227°50'00"	A DP 316962	0°00'30"	125.02 A	DP 316962	Class B
PEG 23d DP 316962	PEG 23c DP 316962	ob64	227°50'00"	A DP 316962	0°00'30"	13.42 A	DP 316962	Class B
PEG 23c DP 316962	PEG 23a DP 316962	ob65	227°50'00"	A DP 316962	0°00'30"	59.53 A	DP 316962	Class B

# Mark and Vector

Survey Number DP 571962

Meridional Circuit Karamea 2000

From	To	Code	Bearing	Adpt Surv	Bearing Correction	Distance	Adpt Surv	Class
PEG 23a DP 316962	PEG 22a DP 316962	ob66	243°13'30"	A DP 316962	0°00'30"	116.61	A DP 316962	Class B
PEG 22a DP 316962	PEG 20c DP 316962	ob67	202°15'30"	A DP 316962	0°00'30"	78.63	A DP 316962	Class B
PEG 20c DP 316962	PEG 20b DP 316962	ob68	246°15'30"	A DP 316962	0°00'30"	26.77	A DP 316962	Class B
PEG 20b DP 316962	PEG 20a DP 316962	ob69	324°52'30"	A DP 316962	0°00'30"	30.33	A DP 316962	Class B
PEG 20a DP 316962	PEG SO 4410	ob70	35°28'30"	A DP 316962	0°00'30"	22.05	A DP 316962	Class B
PEG SO 4410	PEG 6c DP 316962	ob71	19°48'30"	A DP 316962	0°00'30"	95.41	A DP 316962	Class B
PEG 6c DP 316962	PEG 6b DP 316962	ob72	119°00'30"	A DP 316962	0°00'30"	10.00	A DP 316962	Class B
PEG 6b DP 316962	PEG 6a DP 316962	ob73	174°04'30"	A DP 316962	0°00'30"	29.29	A DP 316962	Class B
PEG 6a DP 316962	PEG 23b DP 316962	ob74	63°13'30"	A DP 316962	0°00'30"	120.50	A DP 316962	Class B
PEG 23b DP 316962	PEG 23e DP 316962	ob75	47°50'00"	A DP 316962	0°00'30"	70.21	A DP 316962	Class B
PEG 23e DP 316962	PEG 23g DP 316962	ob76	47°50'00"	A DP 316962	0°00'30"	168.77	A DP 316962	Class B
PEG 23g DP 316962	PEG 23h DP 316962	ob77	47°50'00"	A DP 316962	0°00'30"	25.14	A DP 316962	Class B
PEG 23h DP 316962	PEG 24d DP 316962	ob78	47°50'00"	A DP 316962	0°00'30"	176.50	A DP 316962	Class B
IT IX SO 11761	IT VIII SO 11761	ob1	198°11'30"	A DP 316962	0°00'30"	196.44	A DP 316962	
IT VIII SO 11761	IT VII SO 11761	ob79	194°37'20"	A DP 316962	0°00'30"	137.50	A DP 316962	
IT VII SO 11761	IS 3 DP 316962	ob80	193°15'10"	A DP 316962	0°00'30"	172.28	A DP 316962	
IS 3 DP 316962	IT 4 DP 316962	ob81	215°59'30"	A DP 316962	0°00'30"	108.28	A DP 316962	
IT 4 DP 316962	IS 5 DP 316962	ob82	181°05'20"	A DP 316962	0°00'30"	69.43	A DP 316962	
IS 5 DP 316962	IS 6 DP 316962	ob83	181°05'20"	A DP 316962	0°00'30"	81.14	A DP 316962	
IS 6 DP 316962	PEG 6c DP 316962	ob84	67°17'30"	A DP 316962	0°00'30"	16.19	A DP 316962	
IS 1 DP 571962	PEG 2 DP 571962	ob7	49°53'30"	M		70.81	M	
PEG 24g DP 316962	PEG 24f DP 316962	ob24	33°26'00"	A DP 316962	0°00'30"	11.86	A DP 316962	Class B
PEG 24d DP 316962	PEG 24e DP 316962	ob22	47°50'00"	A DP 316962	0°00'30"	10.52	A DP 316962	Class B

Mark Name	Mark Condition	Description
IS 2 DP 316962		Spike 0.1m down in verge
IS 21 DP 316962		0.35m down in gravel road 1m in from edge

# Mark and Vector

Survey Number DP 571962

Meridional Circuit Karamea 2000

Mark Name	Mark Condition	Description
IT 3 DP 349114		Flush on the end of a ridge
IT IX SO 11761		0.35m down in gravel road 1m in from edge
IT SADDLE SO 12614		0.1m proud on the hill top

\*\*\* End of Report \*\*\*

# Schedule / Memorandum

---

Land Registration District

**Nelson**

Survey Number

**LT 571962**

Territorial Authority (the Council)

**Buller District**

## Schedule of Existing Easements

Last Edited: 22 Dec 2021 13:38:58

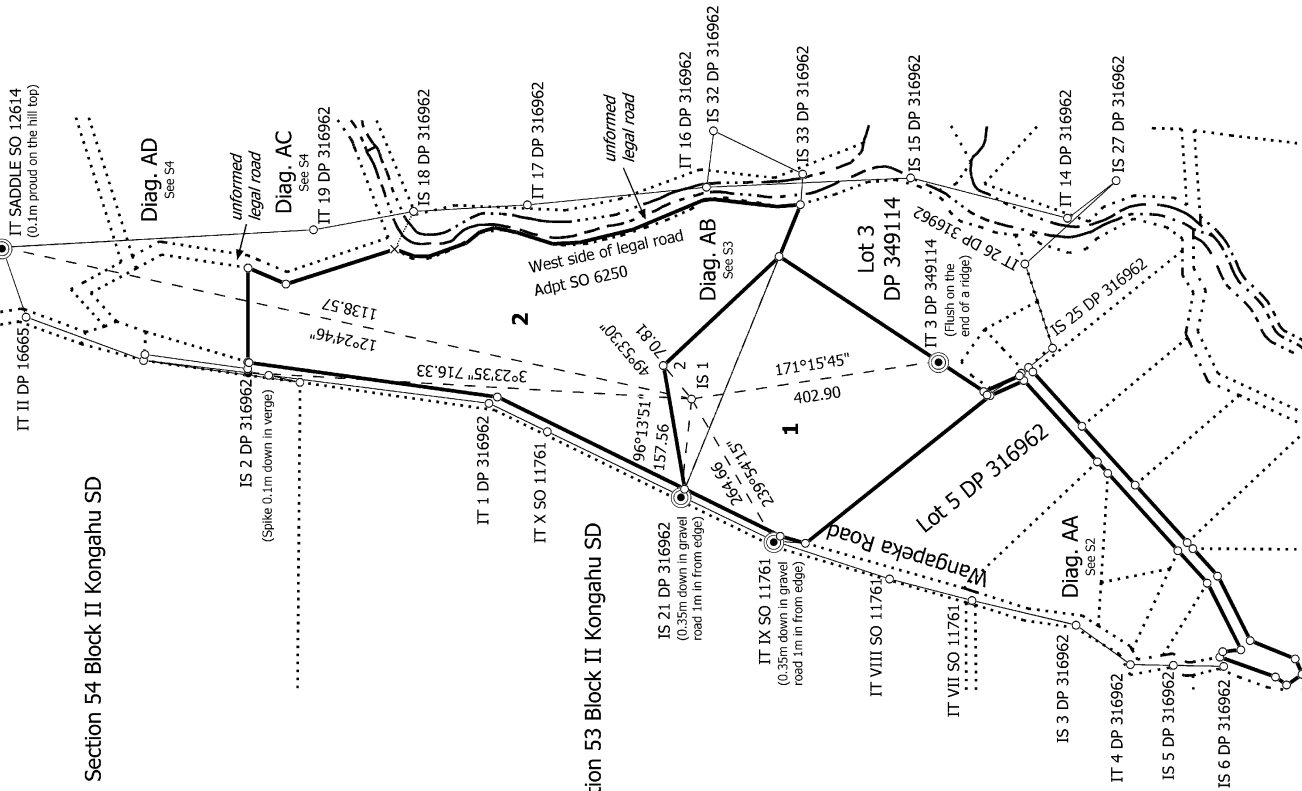
<u>Purpose</u>	<u>Shown</u>	<u>Burdened Land</u> <u>(Servient Tenement)</u>	<u>Creating Document Reference</u>
Right of Way, right to convey water, electric power and telecommunications	A, B	Lot 1	EI 5501972.3



Diag. A

Section 54 Block II Kongahu SD

Section 53 Block II Kongahu SD



S 1/4

Land District: Nelson

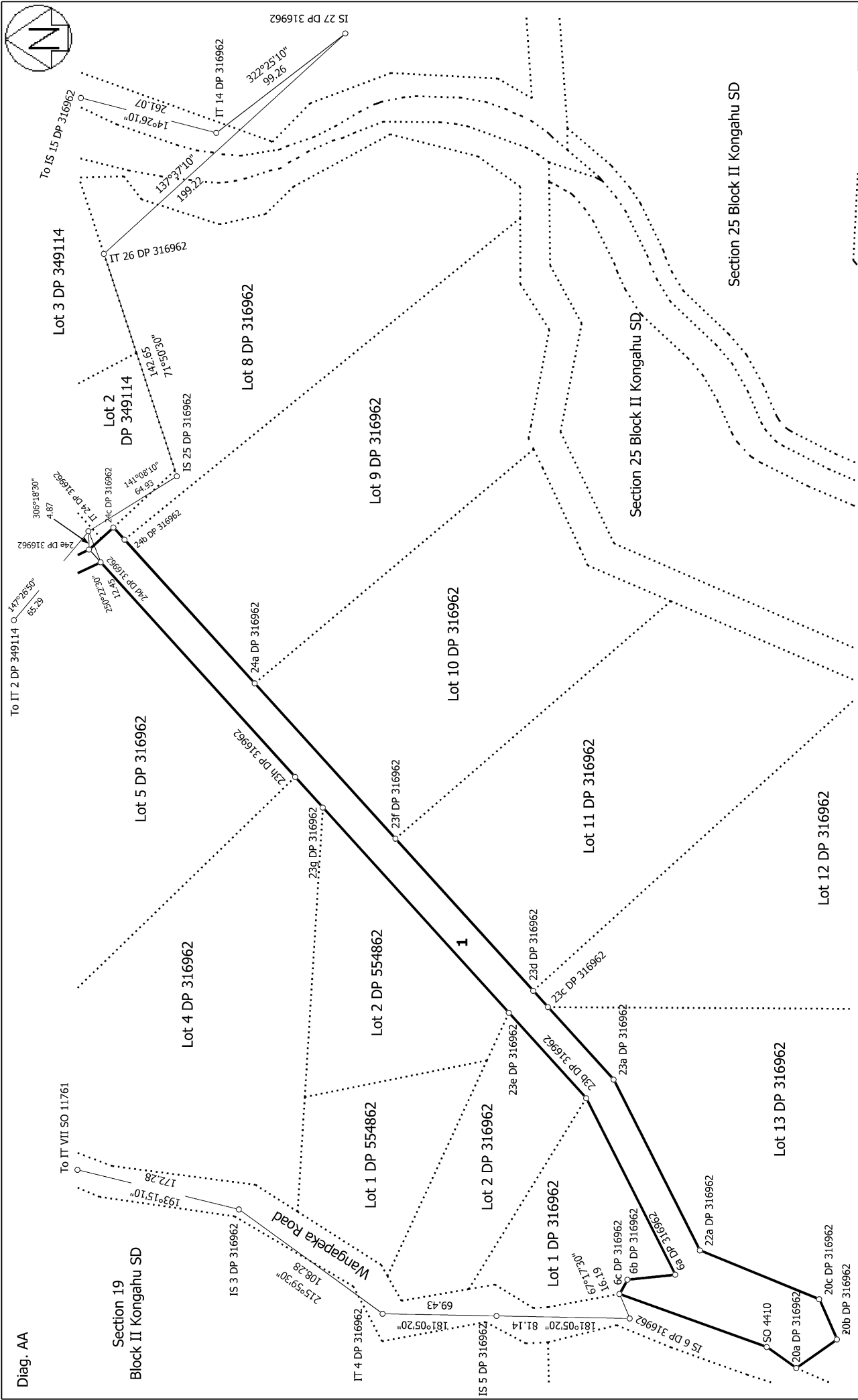
Digitally Generated Plan

Generated on: 12/09/2022 06:31 am | Page 7 of 12

Lot 1 & 2 being a subdivision of Lots 6 & 15 DP 316962

Surveyor: Samuel Millar Lynds  
Firm: Aurum Survey Consultants Ltd (Quee  
Date of Survey: 22/12/2021

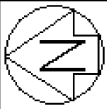
Record of Survey  
DP 571962  
Deposited on: 27/07/2022



<p>Diag. AA</p>	<p>Section 19 Block II Kongahau SD</p>	<p>Section 25 Block II Kongahau SD</p>	<p>Section 25 Block II Kongahau SD</p>	<p>S 2/4</p>
<p>Land District: Nelson</p>		<p>Record of Survey DP 571962</p>		<p>Surveyor: Samuel Millar Lynds Firm: Aurum Survey Consultants Ltd (Quee Date of Survey: 22/12/2021</p>
<p>Digitally Generated Plan Generated on: 12/09/2022 06:31:01 Page 8 of 12</p>		<p>Lot 1 &amp; 2 being a subdivision of Lots 6 &amp; 15 DP 316962 Deposited on: 27/07/2022</p>		

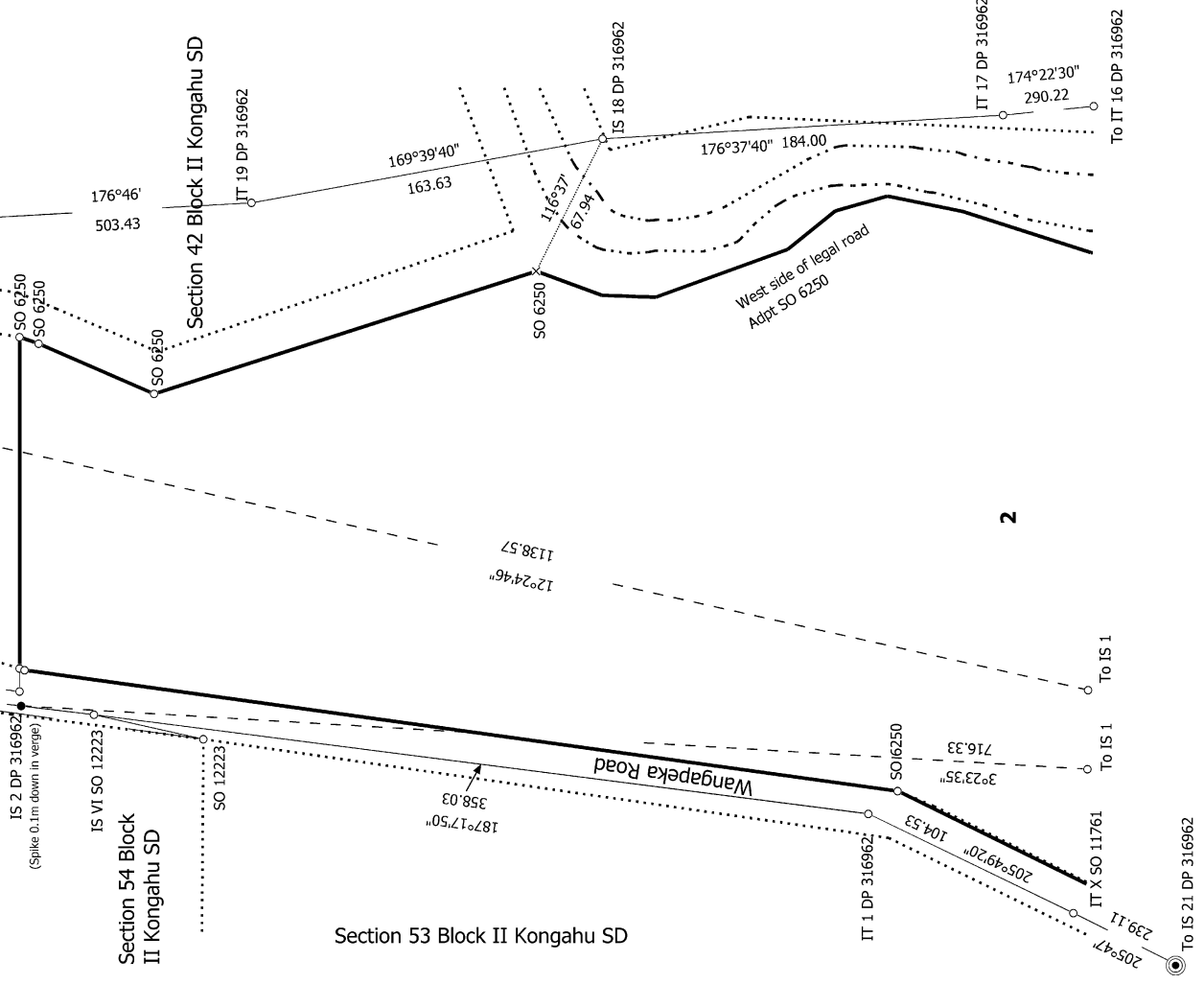
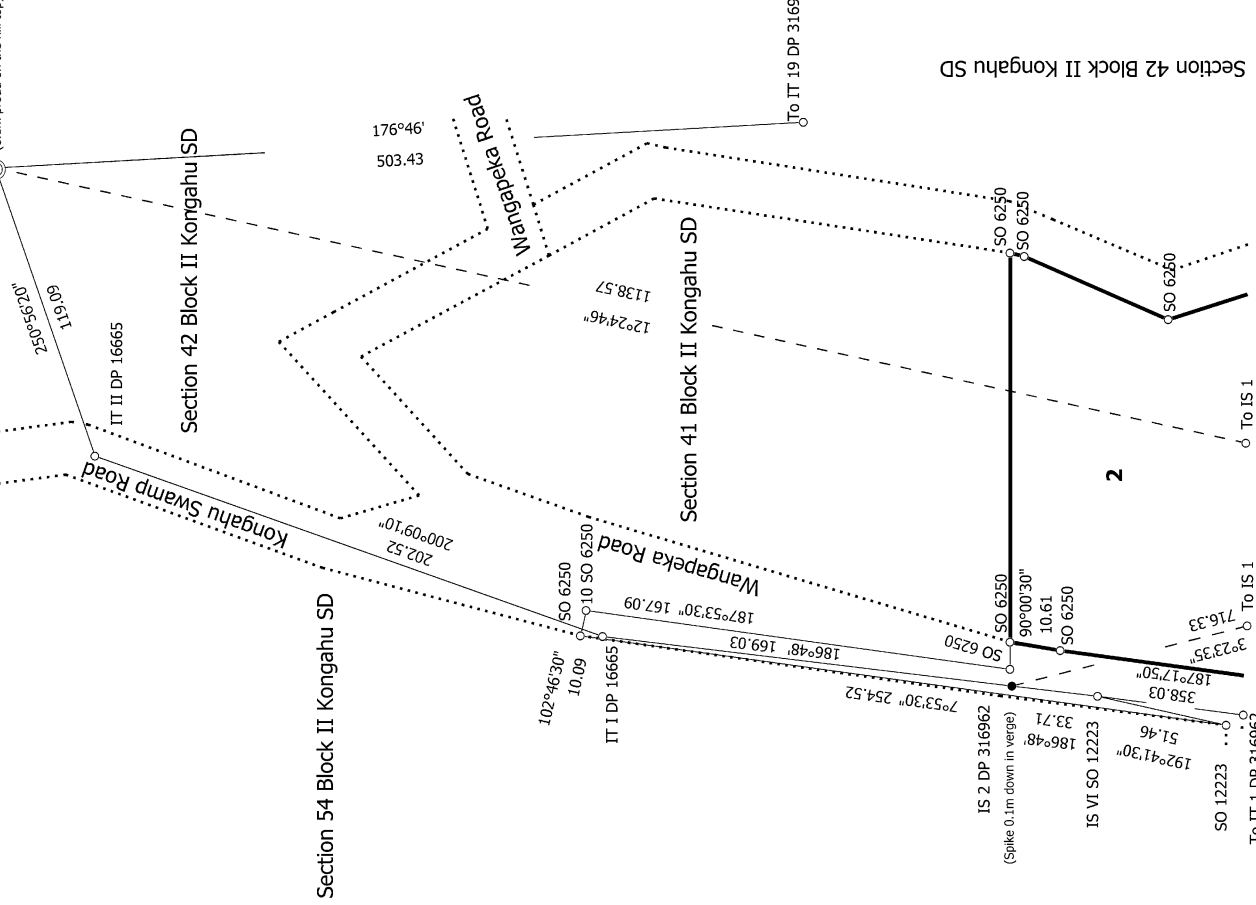






Diag. AD

Diag. AC



S 4/4

Record of Survey  
DP 571962  
Deposited on: 27/07/2022

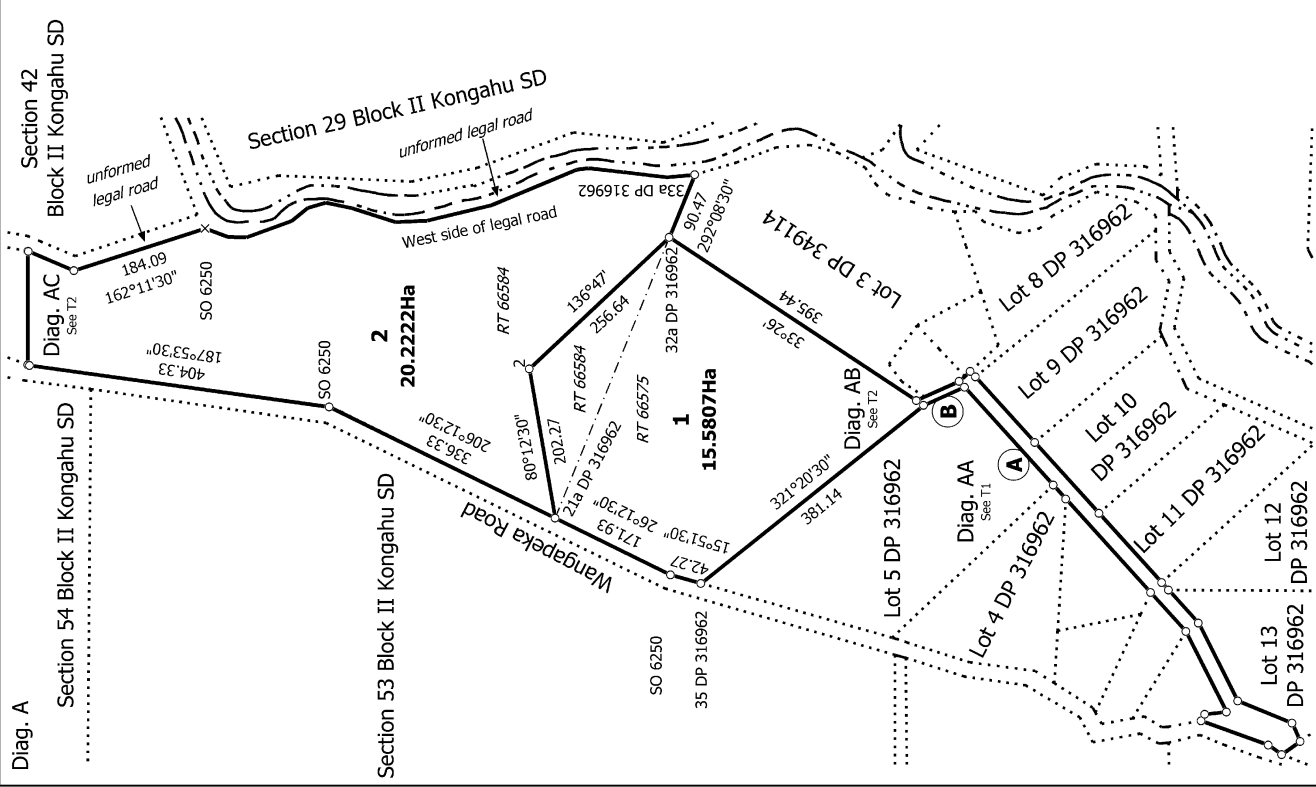
Surveyor: Samuel Millar Lynds  
Firm: Aurum Survey Consultants Ltd (Quee  
Date of Survey: 22/12/2021

Lot 1 & 2 being a subdivision of Lots 6 & 15 DP 316962

Land District: Nelson  
Digitally Generated Plan  
Generated on: 12/09/2022 06:31 am | Page 10 of 12



Diag. AA



Diag. A

T 1/2

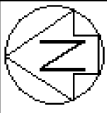
Surveyor: Samuel Millar Lynds  
 Firm: Aurum Survey Consultants Ltd (Quee  
 Date of Survey: 22/12/2021

Record of Survey  
 DP 571962

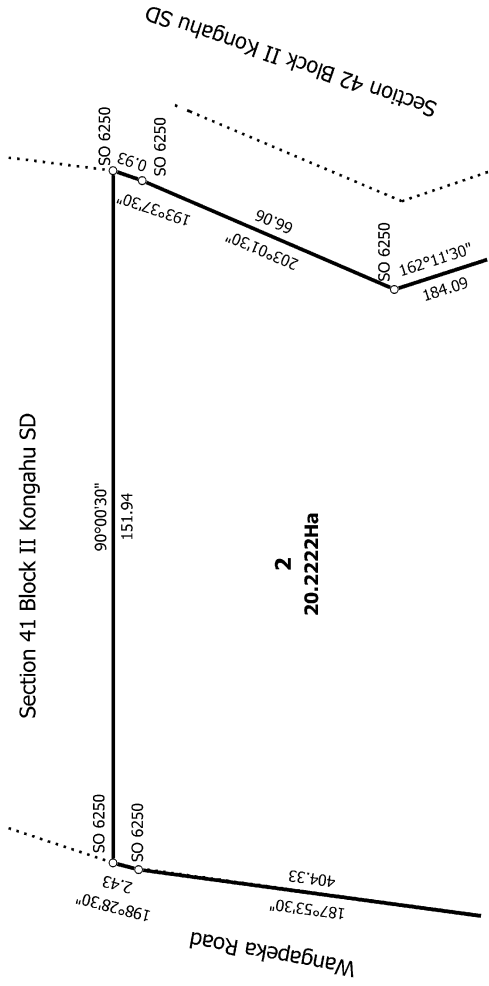
Land District: Nelson  
 Digitally Generated Plan  
 Generated on: 12/09/2022 06:31:01 Page 11 of 12

Deposited on: 27/07/2022

Lot 1 & 2 being a subdivision of Lots 6 & 15 DP 316962



Diag. AC



T 2/2

Record of Survey  
DP 571962  
Deposited on: 27/07/2022

Surveyor: Samuel Millar Lynds  
Firm: Aurum Survey Consultants Ltd (Quee  
Date of Survey: 22/12/2021

Lot 1 & 2 being a subdivision of Lots 6 & 15 DP 316962

Diag. AB

