

Record of Survey - DP 572023

Survey Number	DP 572023
Surveyor Reference	18083 Riggans and Calis
Surveyor	Tracy Claire Smith
Survey Firm	Parallax Consultants Ltd
Surveyor Declaration	I Tracy Claire Smith, being a licensed cadastral surveyor, certify that-- (a) this dataset provided by me and its related survey are accurate, correct and in accordance with the Cadastral Survey Act 2002 and Cadastral Survey Rules 2021; and (b) the survey was undertaken by me or under my personal direction. Declared on 31 Aug 2022 09:16 AM

Survey Details

Dataset Description	Lots 1 and 2 being a subdivision of Lot 1 DP 123737 and Lot 1 DP 64572		
Purpose	LT Subdivision		
Status	Deposited	Type	Survey
Land District	North Auckland	Survey Class	Class B
Meridional Circuit	Mount Eden 2000	Vertical Datum	None

Survey Dates

Surveyed Date	07/04/2022	Certified Date	31/08/2022
Submitted Date	31/08/2022 09:16:41	Survey Approval Date	01/09/2022
Deposit Date	01/07/2022		

Referenced Surveys

Survey Number	Land District	Bearing Correction
DP 506644	North Auckland	0°00'00"
DP 123739	North Auckland	0°00'00"
DP 179124	North Auckland	0°00'00"
DP 64572	North Auckland	-0°01'30"
DP 123737	North Auckland	0°00'00"
DP 316184	North Auckland	0°00'00"

Territorial Authorities

Auckland Council

Comprised In

RT NA72B/5
RT NA20D/654

Created Parcels

Parcels	Parcel Intent	Area	RT Reference
	Hydro		
Lot 1 Deposited Plan 572023	Fee Simple Title	5.0019 Ha	1038113
Lot 2 Deposited Plan 572023	Fee Simple Title	7.2816 Ha	1038114
Total Area		12.2835 Ha	

Mark and Vector

Survey Number DP 572023

Meridional Circuit Mount Eden 2000

From	To	Code	Bearing	Adpt Surv	Bearing Correction	Distance	Adpt Surv	Class
IT V DP 316184	IT A DP 527023	ob0	274°35'20"	M		497.47 M		
IT A DP 527023	IT V DP 123737	ob39	336°32'10"	M		1,302.00 M		
IT V DP 316184	IT XII DP 64572	ob1	285°51'10"	A DP 316184	0°00'00"	147.84 A DP 316184		
IT XII DP 64572	IS XIII DP 64572	ob2	304°06'30"	A DP 64572	0°00'00"	55.60 A DP 64572		
IS XIII DP 64572	IT XIV DP 64572	ob3	259°12'50"	A DP 64572	0°00'00"	56.57 A DP 64572		
IT XIV DP 64572	IT A DP 527023	ob4	265°11'45"	M		252.96 M		
IT A DP 527023	IS XLIII DP 123737	ob40	257°29'10"	M		342.81 M		
IS XLIII DP 123737	IS XVII DP 64572	ob14	196°01'00"	A DP 123739	0°00'00"	21.88 A DP 123739		
IS XVII DP 64572	PEG (15) DP 64572	ob16	40°33'30"	A DP 64572	0°00'00"	5.91 A DP 64572		
PEG (15) DP 64572	PEG (16) DP 64572	ob18	80°00'00"	A DP 64572	0°00'00"	276.88 A DP 123737		
PEG (16) DP 64572	PEG 1 DP 527023	ob20	80°00'20"	A DP 123737	0°00'00"	54.55 C		
PEG 1 DP 527023	PEG XXX DP 64572	ob36	80°00'20"	A DP 123737	0°00'00"	275.49 C		Class B
PEG XXX DP 64572	IT XIV DP 64572	ob34	307°09'00"	A DP 123737	0°00'00"	10.96 A DP 123737		
IT XIV DP 64572	IT XIII DP 65659	ob5	323°52'00"	A DP 123737	0°00'00"	207.04 A DP 123737		
IT XIII DP 65659	IT I DP 123737	ob6	323°04'30"	A DP 123737	0°00'00"	34.73 A DP 123737		
IT I DP 123737	IS IA DP 123737	ob7	223°36'50"	A DP 123737	0°00'00"	25.44 A DP 123737		
IS IA DP 123737	IT XIII DP 123737	ob9	233°45'00"	A DP 123737	0°00'00"	137.44 A DP 123737		
IT XIII DP 123737	IT XVI DP 123737	ob10	232°11'50"	A DP 123737	0°00'00"	145.20 A DP 123737		
IT XVI DP 123737	IT XVII DP 123737	ob11	232°11'50"	A DP 123737	0°00'00"	91.47 A DP 123737		
IT XVII DP 123737	IT XVIII DP 123737	ob12	257°29'30"	A DP 123737	0°00'00"	77.55 A DP 123737		
IT XVIII DP 123737	IS XLIII DP 123737	ob13	241°17'30"	A DP 123737	0°00'00"	60.12 A DP 123737		
IS XLIII DP 123737	PEG 55 DP 123739	ob15	217°49'00"	A DP 123737	0°00'00"	23.66 A DP 123737		
PEG 55 DP 123739	PEG 54 DP 123739	ob21	348°28'00"	A DP 123737	0°00'00"	67.74 A DP 123737		Class B
PEG 54 DP 123739	PEG 53 DP 123739	ob22	48°58'00"	A DP 123737	0°00'00"	24.83 A DP 123737		Class B
PEG 53 DP 123739	PEG (22) DP 123737	ob23	120°22'00"	A DP 123737	0°00'00"	25.94 A DP 123737		Class B
PEG (22) DP 123737	PEG (23) DP 123737	ob24	78°03'30"	A DP 123737	0°00'00"	104.99 A DP 123737		Class B

Mark and Vector

Survey Number DP 572023

Meridional Circuit Mount Eden 2000

From	To	Code	Bearing	Adpt Surv	Bearing Correction	Distance	Adpt Surv	Class
PEG (23) DP 123737	PEG (24) DP 123737	ob25	22°56'00"	A DP 123737	0°00'00"	75.80 A	DP 123737	Class B
PEG (24) DP 123737	PEG (25) DP 123737	ob26	94°11'00"	A DP 123737	0°00'00"	62.20 A	DP 123737	Class B
PEG (25) DP 123737	IT XVI DP 123737	ob27	190°25'00"	A DP 123737	0°00'00"	36.72 A	DP 123737	
PEG (25) DP 123737	PEG (35) DP 123737	ob28	35°49'00"	A DP 123737	0°00'00"	84.65 A	DP 123737	Class B
PEG (35) DP 123737	PEG (36) DP 123737	ob30	59°58'30"	A DP 123737	0°00'00"	128.38 A	DP 123737	Class B
PEG (36) DP 123737	PEG (37) DP 123737	ob31	107°16'00"	A DP 123737	0°00'00"	69.51 A	DP 123737	Class B
PEG (37) DP 123737	PEG 14 DP 123737	ob32	58°17'00"	A DP 123737	0°00'00"	26.95 A	DP 123737	Class B
PEG 14 DP 123737	PEG XXX DP 64572	ob33	141°46'50"	A DP 64572	0°00'00"	223.30 A	DP 64572	Class B
PEG 1 DP 527023	PEG 2 DP 527023	ob37	352°00'30"	C		88.91 C		Class B
PEG 2 DP 527023	PEG (25) DP 123737	ob38	274°49'15"	C		104.91 C		Class B
PEG (25) DP 123737	IT A DP 527023	ob29	116°31'50"	M		142.42 M		
IT I DP 123737	IT VI DP 123737	ob8	324°27'35"	A DP 123737	0°00'00"	888.99 A	DP 123737	
IT VI DP 123737	IT V DP 123737	ob43	336°30'20"	A DP 123737	0°00'00"	277.85 A	DP 123737	
IS XVII DP 64572	IS XIX DP 64572	ob17	175°50'40"	A DP 64572	0°00'00"	69.89 A	DP 64572	
IS XIX DP 64572	IS XX DP 64572	ob44	176°32'50"	A DP 64572	0°00'00"	31.74 A	DP 64572	
IS XX DP 64572	PEG XXI DP 64572	ob45	137°43'00"	A DP 64572	0°00'00"	57.41 A	DP 64572	
PEG XXI DP 64572	IS XXII DP 64572	ob75	137°43'00"	A DP 64572	0°00'00"	20.12 A	DP 64572	
IS XXII DP 64572	IS X DP 179124	ob46	349°04'00"	A DP 179124	0°00'00"	19.19 A	DP 179124	
IS X DP 179124	AL PEG N DP 123739	ob47	195°20'00"	A DP 179124	0°00'00"	37.55 A	DP 179124	
AL PEG N DP 123739	IS O DP 123739	ob49	1°30'00"	A DP 123739	0°00'00"	26.97 A	DP 123739	
IS O DP 123739	IS P DP 123739	ob50	275°41'20"	A DP 123739	0°00'00"	38.67 A	DP 123739	
IS P DP 123739	PEG Q DP 123739	ob51	328°03'00"	A DP 123739	0°00'00"	20.76 A	DP 123739	
PEG Q DP 123739	AL PEG R DP 123739	ob52	45°50'40"	A DP 123739	0°00'00"	28.31 A	DP 123739	
AL PEG R DP 123739	IS S DP 123739	ob53	35°07'00"	A DP 123739	0°00'00"	18.45 A	DP 123739	
IS S DP 123739	IS T DP 123739	ob54	1°32'00"	A DP 123739	0°00'00"	12.65 A	DP 123739	
IS T DP 123739	IS U DP 123739	ob55	310°42'00"	A DP 123739	0°00'00"	45.10 A	DP 123739	

Mark and Vector

Survey Number DP 572023

Meridional Circuit Mount Eden 2000

From	To	Code	Bearing	Adpt Surv	Bearing Correction	Distance	Adpt Surv	Class
IS U DP 123739	AL PEG V DP 123739	ob56	6°19'00"	A DP 123739	0°00'00"	40.54 A	DP 123739	
AL PEG V DP 123739	IS XLIII DP 123737	ob57	13°47'00"	A DP 123739	0°00'00"	32.52 A	DP 123739	
IS X DP 179124	IT XI DP 179124	ob48	53°47'00"	A DP 179124	0°00'00"	22.70 A	DP 179124	
IT XI DP 179124	IT VI DP 179124	ob58	181°07'00"	A DP 179124	0°00'00"	148.16 A	DP 179124	
IT VI DP 179124	IT V DP 179124	ob59	82°40'50"	A DP 179124	0°00'00"	215.12 A	DP 179124	
IT V DP 179124	IS III DP 179124	ob60	103°42'00"	A DP 179124	0°00'00"	138.32 A	DP 179124	
IS III DP 179124	IS II DP 179124	ob61	107°21'00"	A DP 179124	0°00'00"	93.75 A	DP 179124	
IS II DP 179124	IT I DP 179124	ob62	60°35'20"	A DP 179124	0°00'00"	37.96 A	DP 179124	
IT I DP 179124	IS XI DP 179124	ob63	19°26'00"	A DP 179124	0°00'00"	84.55 A	DP 179124	
IS XI DP 179124	IS XII DP 58631	ob64	52°14'00"	A DP 179124	0°00'00"	94.41 A	DP 179124	
IS XII DP 58631	IS VII DP 316184	ob65	29°54'00"	A DP 316184	0°00'00"	44.54 A	DP 316184	
IS VII DP 316184	IT VI DP 316184	ob66	6°40'50"	A DP 316184	0°00'00"	119.01 A	DP 316184	
IT VI DP 316184	IT XII DP 64572	ob67	8°58'00"	A DP 316184	0°00'00"	91.93 A	DP 316184	
PEG XXX DP 64572	PEG (59) DP 64572	ob35	101°20'30"	A DP 64572	0°00'00"	27.64 A	DP 64572	Class B
PEG (59) DP 64572	PEG (60) DP 64572	ob68	260°00'00"	A DP 64572	0°00'00"	303.86 A	DP 64572	Class B
PEG (60) DP 64572	PEG (61) DP 64572	ob69	185°58'30"	A DP 64572	0°00'00"	70.41 A	DP 64572	Class B
PEG (61) DP 64572	PEG (62) DP 64572	ob70	245°35'30"	A DP 506644	0°00'00"	87.51 A	DP 64572	Class B
PEG (62) DP 64572	PEG (63) DP 64572	ob71	245°35'00"	A DP 64572	0°00'00"	168.98 A	DP 64572	Class B
PEG (63) DP 64572	PEG (64) DP 64572	ob72	245°36'00"	A DP 179124	0°00'00"	13.66 A	DP 64572	Class B
PEG (64) DP 64572	IT XI DP 179124	ob73	327°31'00"	A DP 179124	0°00'00"	4.22 A	DP 179124	
PEG (64) DP 64572	PEG (66) DP 64572	ob74	245°36'00"	A DP 179124	0°00'00"	28.75 A	DP 64572	Class B
PEG (66) DP 64572	PEG XXI DP 64572	ob77	245°36'00"	A DP 179124	0°00'00"	4.71 A	DP 64572	Class B
PEG XXI DP 64572	UNMK (67) DP 64572	ob76	245°36'00"	A DP 179124	0°00'00"	3.02 A	DP 64572	Class B
UNMK (67) DP 64572	UNMK (68) DP 179124	ob78	245°36'00"	A DP 179124	0°00'00"	2.63 C		Class BD
UNMK (68) DP 179124	IS O DP 123739	ob79	117°02'00"	C		6.52 C		
PEG (15) DP 64572	UNMK (69) DP 64572	ob19	260°00'00"	A DP 123737	0°00'00"	6.04 A	DP 64572	
UNMK (69) DP 64572	UNMK (70) DP 123737	ob80	260°00'00"	A DP 123737	0°00'00"	0.46 C		
UNMK (70) DP 123737	UNMK 621 DP 123739	ob81	260°00'00"	A DP 123737	0°00'00"	3.40 A	DP 123737	Class BD

Mark and Vector

Survey Number DP 572023

Meridional Circuit Mount Eden 2000

From	To	Code	Bearing	Adpt Surv	Bearing Correction	Distance	Adpt Surv	Class
UNMK 621 DP 123739	PEG 55 DP 123739	ob82	260°00'00"	A DP 123737	0°00'00"	2.60 A	DP 123737	Class BD
IT A DP 527023	PEG 1 DP 527023	ob41	197°31'00"	M		34.87 M		
IT A DP 527023	PEG 2 DP 527023	ob42	337°22'30"	M		59.35 M		

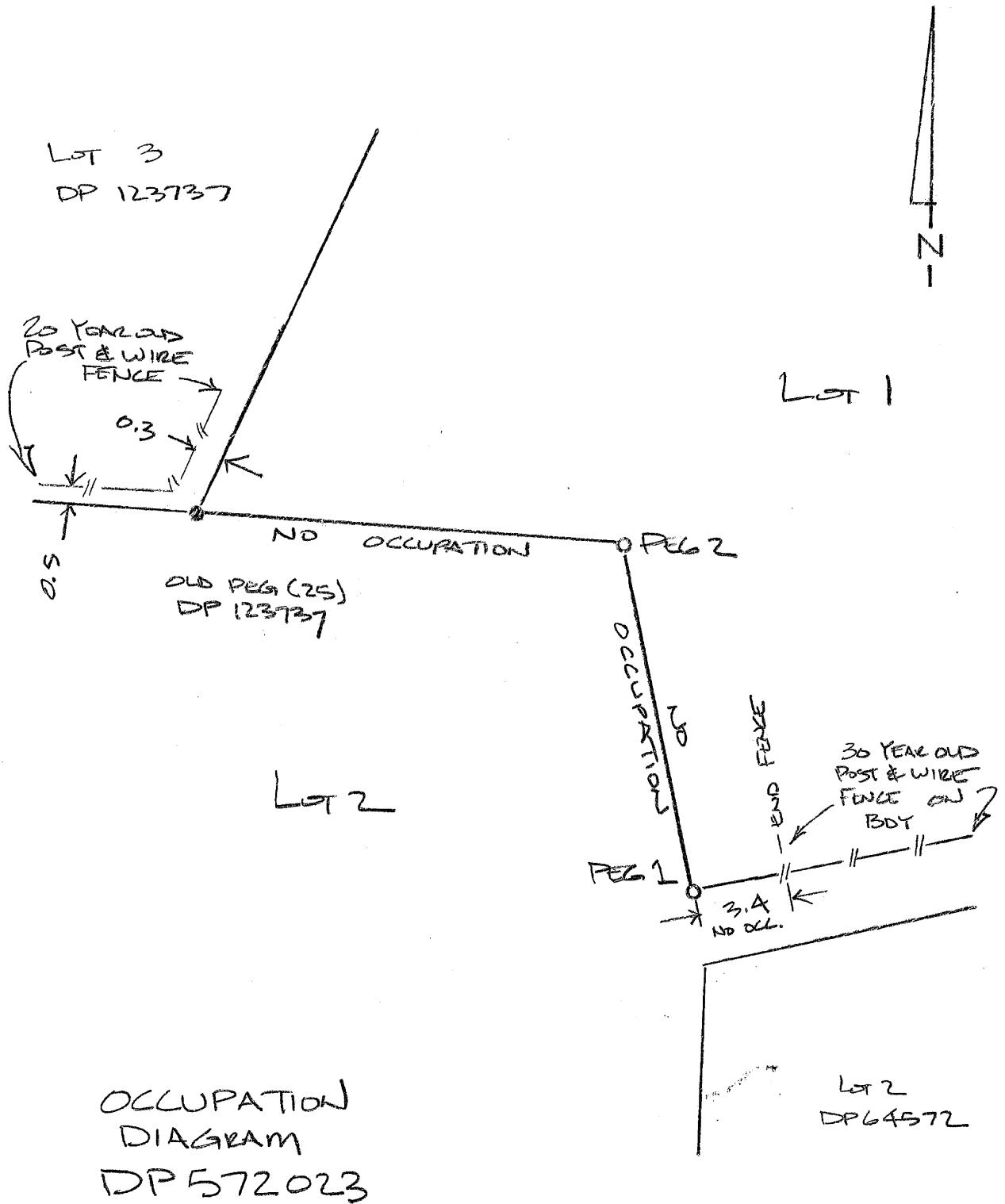
Mark Name	Mark Condition	Description
IS XLIII DP 123737		0.2 deep in paddock
IT A DP 527023		on knoll 31m N of post & wire fence, 21m W of post & wire fence
IT XIV DP 64572		2.6 SW of deer fence, 8.0 N of post & wire fence

*** End of Report ***

Occupation Diagram

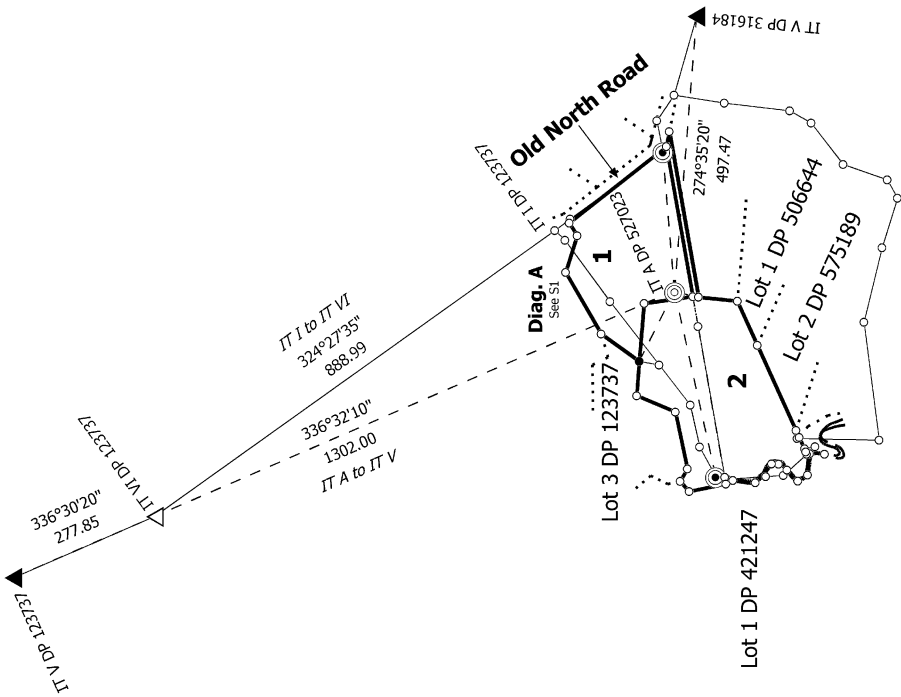
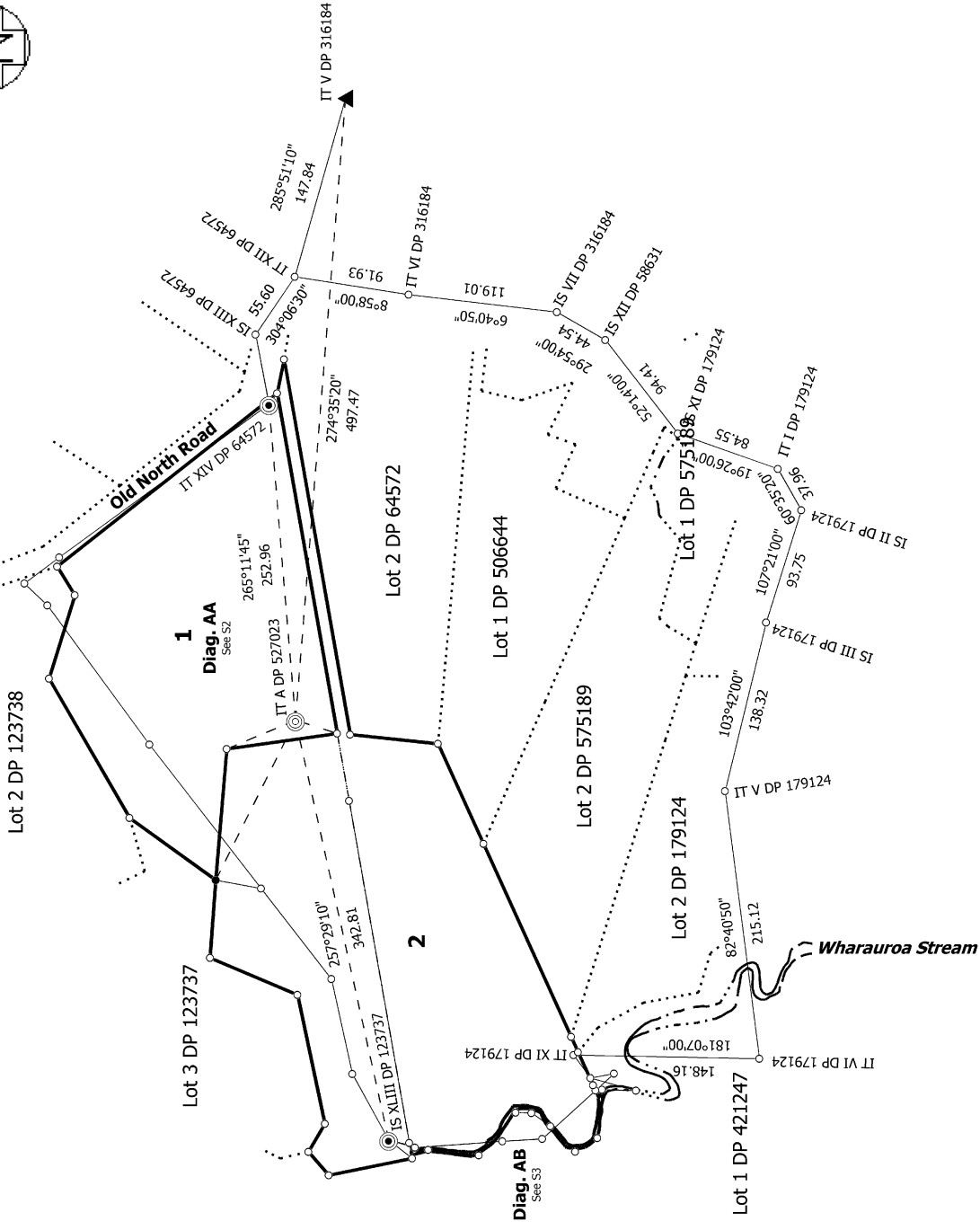


50 Woodcocks Road
PO Box 266
Warkworth 0941
www.parallaxsurveyors.co.nz
Ph: 09 425 8700





Diag. A



S 1/3

Land District: North Auckland

Digitally Generated Plan

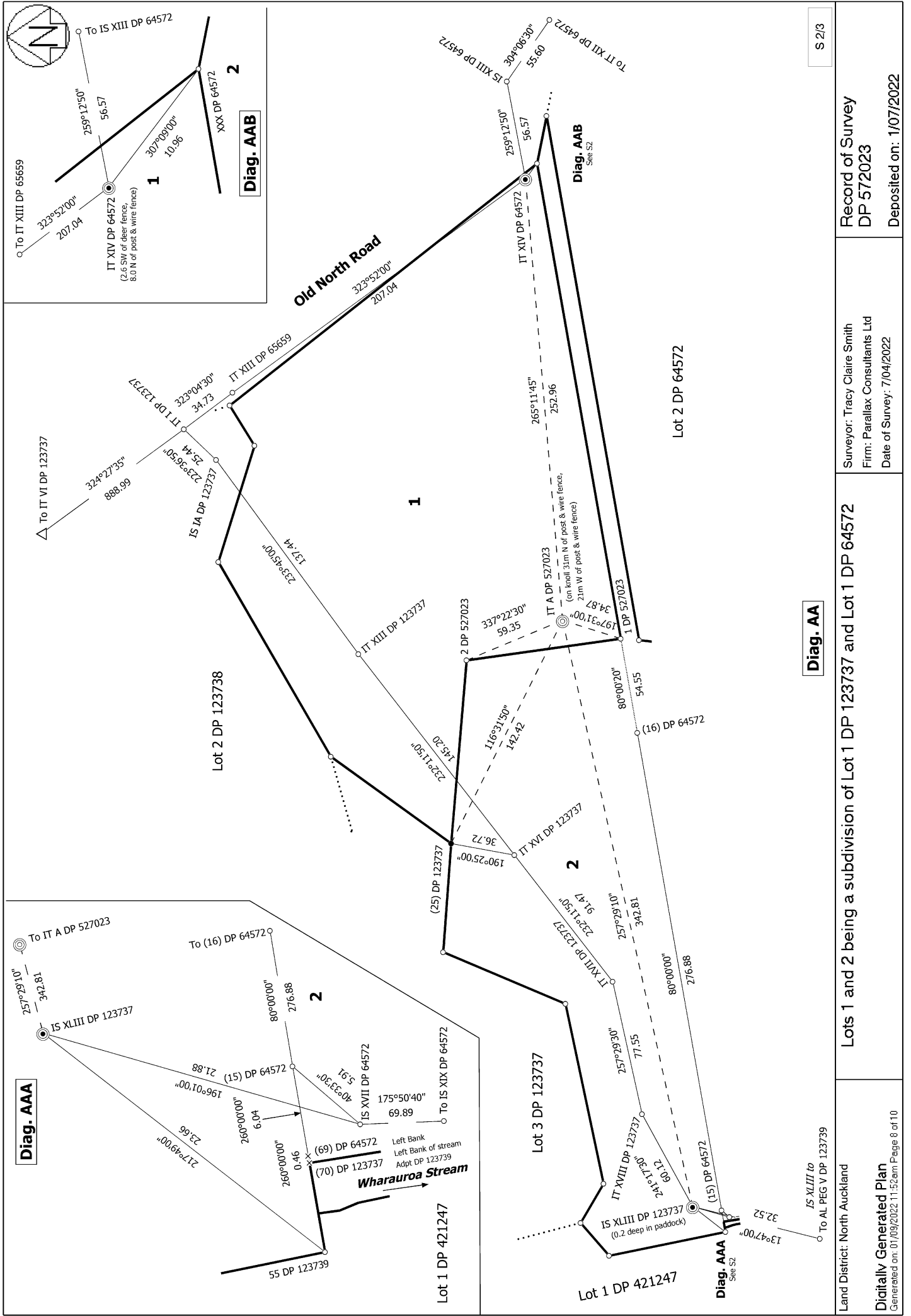
Generated on: 07/09/2022 11:52am | Page 7 of 10

Lots 1 and 2 being a subdivision of Lot 1 DP 123737 and Lot 1 DP 64572

Surveyor: Tracy Claire Smith
Firm: Parallax Consultants Ltd
Date of Survey: 7/04/2022

**Record of Survey
DP 572023**

Deposited on: 1/07/2022



S 2/3

Record of Survey
 DP 572023
 Deposited on: 1/07/2022

Surveyor: Tracy Claire Smith
 Firm: Parallax Consultants Ltd
 Date of Survey: 7/04/2022

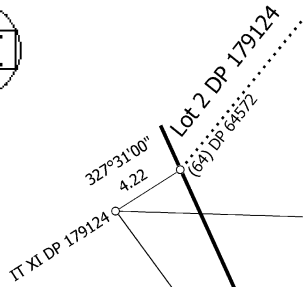
Lots 1 and 2 being a subdivision of Lot 1 DP 123737 and Lot 1 DP 64572

Land District: North Auckland
 Digitally Generated Plan
 Generated on: 07/09/2022 11:52:am | Page 8 of 10



Diag. ABA

2



S 3/3

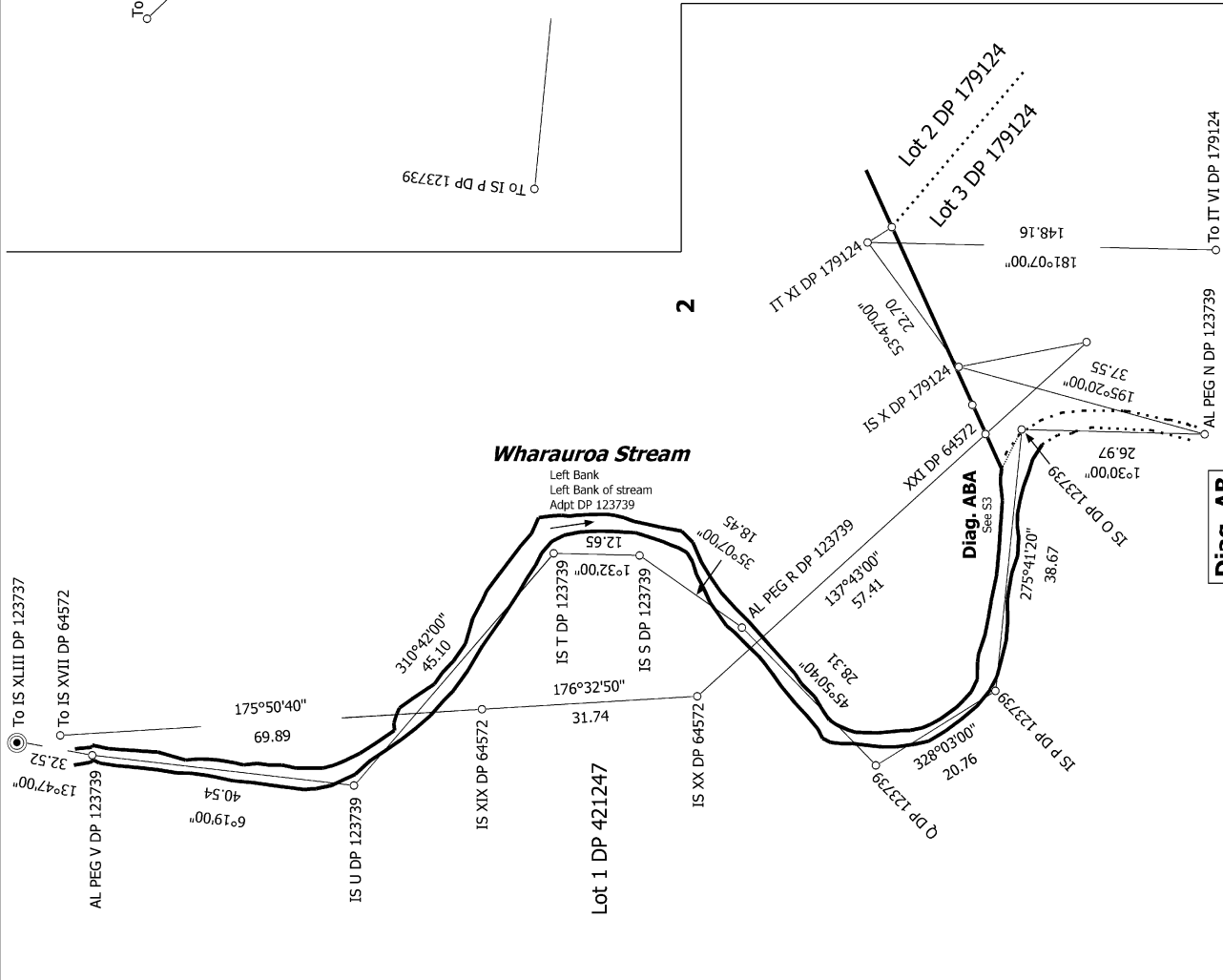
Record of Survey
DP 572023

Deposited on: 1/07/2022

Surveyor: Tracy Claire Smith
Firm: Parallax Consultants Ltd
Date of Survey: 7/04/2022

Lots 1 and 2 being a subdivision of Lot 1 DP 123737 and Lot 1 DP 64572

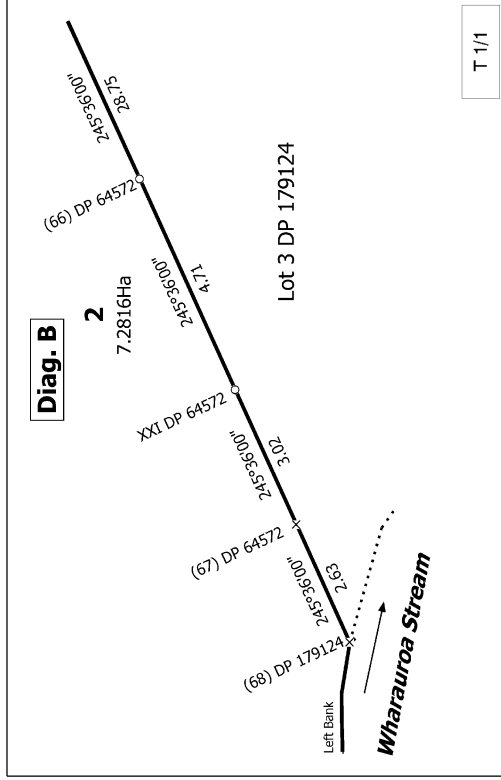
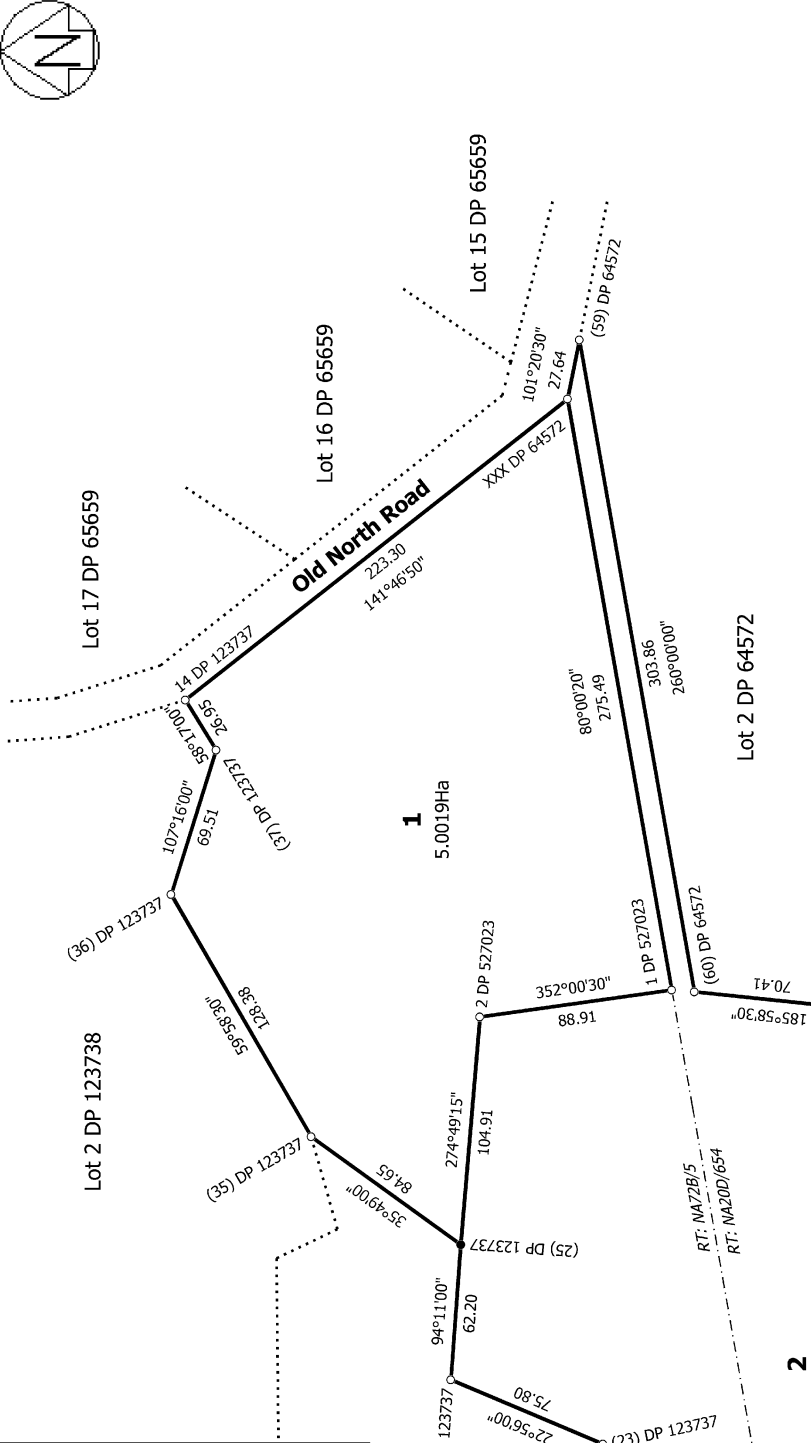
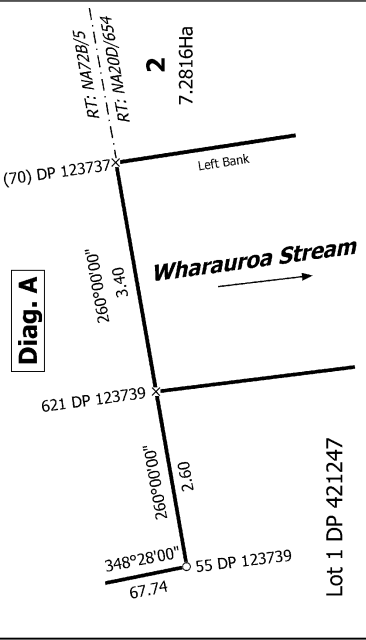
Diag. AB



Land District: North Auckland

Digitally Generated Plan

Generated on: 07/09/2022 11:52:am Page 9 of 10



T 1/1

Lots 1 and 2 being a subdivision of Lot 1 DP 123737 and Lot 1 DP 64572

Surveyor: Tracy Claire Smith
 Firm: Parallax Consultants Ltd
 Date of Survey: 7/04/2022

Record of Survey
 DP 572023
 Deposited on: 1/07/2022