

Record of Survey - DP 574502

Survey Number	DP 574502
Surveyor Reference	1882 Seifried.nzt
Surveyor	Neil Stewart Bates
Survey Firm	Planscapes (NZ) Limited (Nelson)
Surveyor Declaration	I Neil Stewart Bates, being a licensed cadastral surveyor, certify that-- (a) this dataset provided by me and its related survey are accurate, correct and in accordance with the Cadastral Survey Act 2002 and Cadastral Survey Rules 2021; and (b) the survey was undertaken by me or under my personal direction. Declared on 05 Jul 2022 01:52 PM

Survey Details

Dataset Description	Lots 1 and 2 Being Subdivision of Lot 1 DP 445425		
Purpose	LT Subdivision		
Status	Deposited	Type	Survey
Land District	Nelson	Survey Class	Class B
Meridional Circuit	Nelson 2000	Vertical Datum	None

Survey Dates

Surveyed Date	11/03/2022	Certified Date	05/07/2022
Submitted Date	05/07/2022 13:52:48	Survey Approval Date	22/07/2022
Deposit Date	05/07/2022		

Referenced Surveys

Survey Number	Land District	Bearing Correction
SO 355132	Nelson	0°00'00"
DP 445425	Nelson	0°00'00"

Territorial Authorities

Tasman District

Comprised In

RT 560207
RT 774655

Created Parcels

Parcels	Parcel Intent	Area	RT Reference
Esplanade Strip A Deposited Plan 574502	Esplanade Strip		
Lot 1 Deposited Plan 574502	Fee Simple Title	1.0355 Ha	1050517
Lot 2 Deposited Plan 574502	Fee Simple Title	7.3975 Ha	1050518
Area B Deposited Plan 574502	Easement		
Total Area		<u>8.4330 Ha</u>	

Mark and Vector

Survey Number DP 574502

Meridional Circuit Nelson 2000

From	To	Code	Bearing	Adpt Surv	Bearing Correction	Distance	Adpt Surv	Class
IT SO 9504	IS 1 DP 445425	ob25	140°06'20" M			111.65 M		
IS 1 DP 445425	IR V DP 445425	ob0	224°07'15" M			249.90 M		
IR V DP 445425	IR IV DP 445425	ob7	327°00'45" A	DP 445425	0°00'00"	229.12 A	DP 445425	
IR IV DP 445425	IR III DP 445425	ob2	349°28'35" A	DP 445425	0°00'00"	119.86 A	DP 445425	
IR III DP 445425	IT V SO 355132	ob6	2°09'00" A	DP 445425	0°00'00"	93.73 A	DP 445425	
IT V SO 355132	IR II DP 445425	ob9	42°55'00" A	DP 445425	0°00'00"	81.82 A	DP 445425	
IR II DP 445425	IT SO 9504	ob3	136°18'10" M			274.67 M		
IT V SO 355132	IT SO 9504	ob10	119°27'15" A	SO 355132	0°00'00"	281.93 A	SO 355132	
IS 1 DP 445425	PEG 1 DP 445425	ob1	223°38'00" M			8.53 M		
PEG 1 DP 445425	DISK 2 DP 574502	ob24	223°38'30" A	DP 445425	0°00'00"	60.83 C		Class B
DISK 2 DP 574502	PEG 2 DP 445425	ob35	223°38'30" A	DP 445425	0°00'00"	180.14 C		Class B
PEG 2 DP 445425	IR V DP 445425	ob18	302°55'00" M			2.12 M		
PEG 2 DP 445425	UNMK (3) DP 445425	ob19	297°37'00" A	DP 445425	0°00'00"	30.05 A	DP 445425	Class BD
UNMK (3) DP 445425	PEG 3 DP 445425	ob15	297°37'00" A	DP 445425	0°00'00"	9.25 A	DP 445425	Class BD
PEG 3 DP 445425	IR V DP 445425	ob16	117°19'00" A	DP 445425	0°00'00"	37.19 A	DP 445425	
IR II DP 445425	IR 4 DP 445425	ob4	338°35'00" M			30.71 M		
IR 4 DP 445425	PEG 7 DP 574502	ob31	140°06'00" A	DP 445425	0°00'00"	288.85 C		Class B
PEG 7 DP 574502	PEG 1 DP 445425	ob37	140°06'00" A	DP 445425	0°00'00"	126.95 C		Class B
IT V SO 355132	PEG 7 DP 445425	ob11	284°49'00" A	DP 445425	0°00'00"	9.60 A	DP 445425	
PEG 7 DP 445425	UNMK (2) DP 445425	ob21	26°10'00" A	DP 445425	0°00'00"	3.25 A	DP 445425	Class BD
UNMK (2) DP 445425	PEG 6 DP 445425	ob14	26°10'00" A	DP 445425	0°00'00"	6.75 A	DP 445425	Class BD
PEG 6 DP 445425	PEG 5 DP 445425	ob22	33°11'00" A	DP 445425	0°00'00"	63.90 A	DP 445425	Class B
PEG 5 DP 445425	IR 4 DP 445425	ob23	31°23'00" A	DP 445425	0°00'00"	27.64 A	DP 445425	Class B
PEG 3 DP 445425	UNMK (4) DP 445425	ob17	297°37'00" A	DP 445425	0°00'00"	11.75 A	DP 445425	Class BD
UNMK (4) DP 445425	UNMK (1) DP 445425	ob20	341°25'10" C			379.22 C		
UNMK (1) DP 445425	PEG 7 DP 445425	ob13	26°10'00" A	DP 445425	0°00'00"	26.95 A	DP 445425	Class BD
IR V DP 445425	IS 1 DP 574502	ob8	1°02'10" M			204.69 M		
IS 1 DP 574502	IT SO 9504	ob32	58°32'20" M			115.68 M		

Mark and Vector

Survey Number DP 574502

Meridional Circuit Nelson 2000

From	To	Code	Bearing	Adpt Surv	Bearing Correction	Distance	Adpt Surv	Class
IS 1 DP 574502	PEG 5 DP 574502	ob33	122°53'00" M			0.77 M		
PEG 5 DP 574502	DISK 6 DP 574502	ob39	48°13'00" M			64.46 M		Class B
DISK 6 DP 574502	PEG 7 DP 574502	ob38	55°39'00" M			41.49 M		Class B
DISK 2 DP 574502	DISK 3 DP 574502	ob36	320°01'10" M			83.54 M		Class B
DISK 3 DP 574502	PEG 4 DP 574502	ob41	223°05'40" M			38.41 M		Class B
PEG 4 DP 574502	PEG 5 DP 574502	ob40	313°02'10" M			57.27 M		Class B
IT V SO 355132	PEG 6 DP 445425	ob12	336°57'00" M	A DP 445425	0°00'00"	12.43 M	A DP 445425	
IR II DP 445425	PEG 5 DP 445425	ob5	281°02'00" M	A DP 445425	0°00'00"	26.09 M	A DP 445425	
IT SO 9504	DISK 2 DP 574502	ob26	170°05'00" M			137.91 M		
IT SO 9504	DISK 3 DP 574502	ob27	202°37'00" M			77.82 M		
IT SO 9504	PEG 4 DP 574502	ob28	209°21'00" M			114.59 M		
IT SO 9504	DISK 6 DP 574502	ob29	250°20'30" M			53.05 M		
IT SO 9504	PEG 7 DP 574502	ob30	289°31'00" M			16.66 M		
IS 1 DP 574502	IR II DP 445425	ob34	340°37'15" M			274.51 M		

Mark Name	Mark Condition	Description
DISK 2 DP 574502		TOP OF POST
DISK 3 DP 574502		TOP OF POST
DISK 6 DP 574502		TOP OF POST
IR 4 DP 445425		FLUSH IN METAL
IR II DP 445425		d 0.3
IR III DP 445425		d 0.3
IR IV DP 445425		d 0.3
IR V DP 445425		d 0.3
IS 1 DP 445425		FLUSH IN SEAL
IS 1 DP 574502		DOWN 0.3
IT SO 9504		Stainless Steel Pin inside iron tube in concrete pad, 0.20 down. In stable ground.ID plaque attached. On Clover Road, approximately 1.1km from S.H. 6 intersection. Outside "Edencourt"; No 116.
PEG 1 DP 445425		IN FENCELINE



Mark and Vector

Survey Number DP 574502
Meridional Circuit Nelson 2000

Mark Name	Mark Condition	Description
PEG 2 DP 445425		BY POST
PEG 4 DP 574502		IN FENCELINE
PEG 7 DP 574502		IN GATEWAY
UNMK (1) DP 445425		Added for irreg line split from LoL CTG
UNMK (2) DP 445425		ESPLANADE POINT
UNMK (3) DP 445425		ESPLANADE POINT

*** End of Report ***

Schedule / Memorandum

Land Registration District

Nelson

Survey Number

LT 574502

Territorial Authority (the Council)

Tasman District

Amalgamation Conditions

Last Edited: 11 Mar 2022 14:40:33

That Lot 2 hereon be transferred to the owner of Lot 6 DP 465302 (RT 774655) and one Record of Title issue. (Land Information reference: 1745278).

Memorandum of Easements

Last Edited: 17 Mar 2022 08:43:56

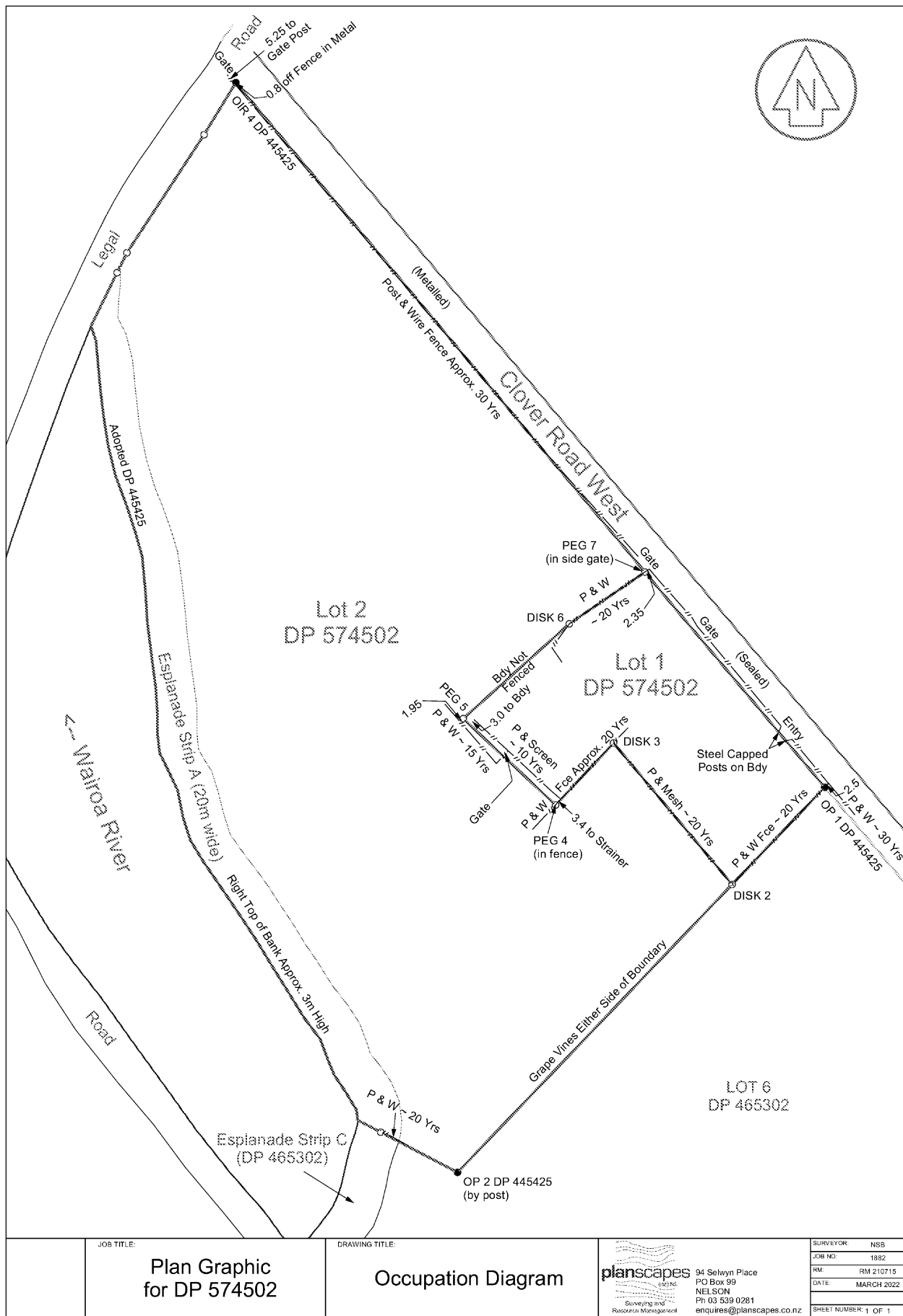
<u>Purpose</u>	<u>Shown</u>	<u>Burdened Land</u> <u>(Servient Tenement)</u>	<u>Benefited Land</u> <u>(Dominant Tenement)</u>
Right to Emit Noise from Hail Cannons and Other Farming Activities/Equipment, Odour from Farming Activities, and Drift from Agricultural and Horticultural Sprays	B	Lot 1	Lot 2, Lot 6 DP 465302

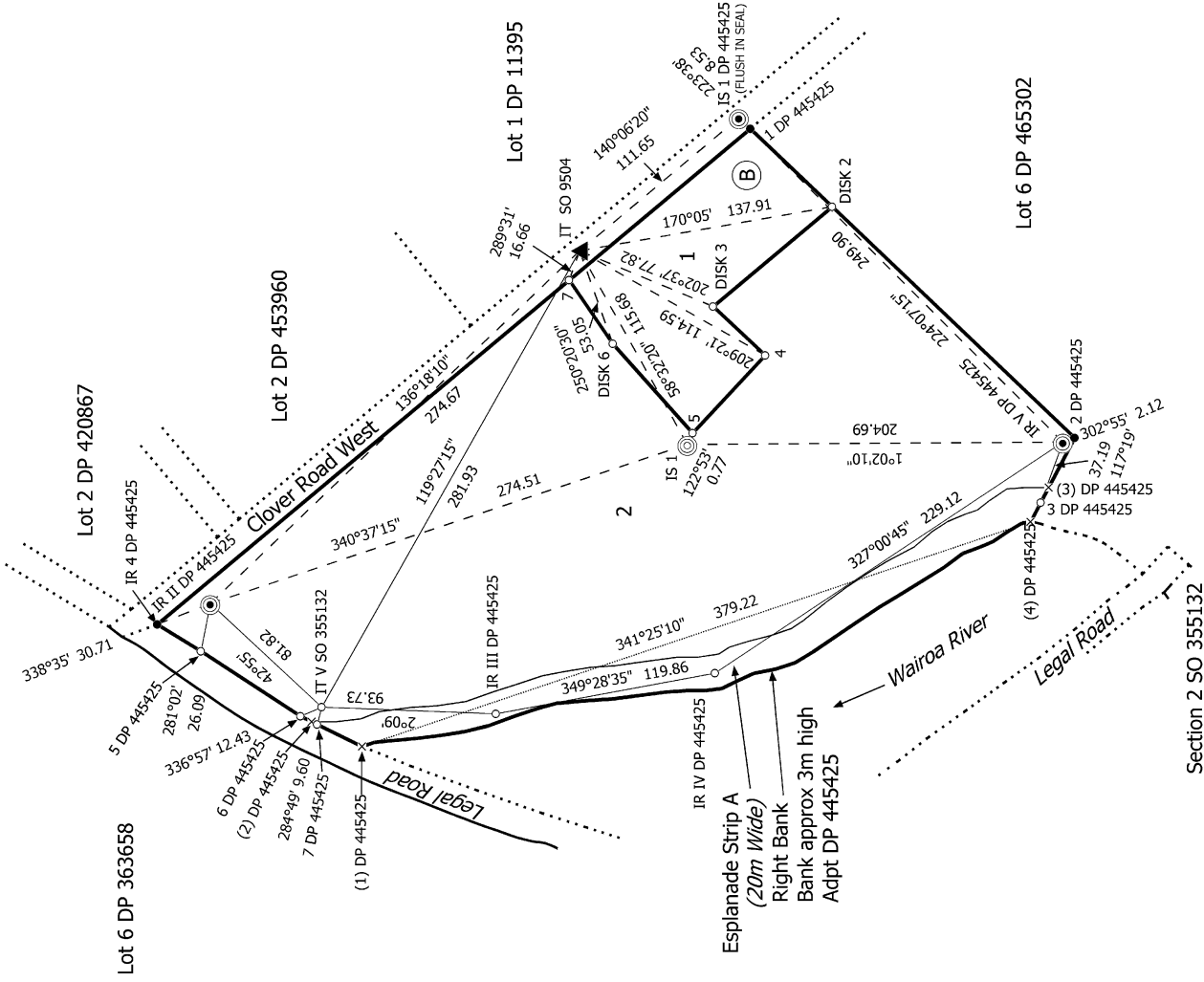
Notes

Last Edited: 05 Apr 2022 13:20:42

Lot 2 subject to Esplanade Strip (20m Wide) 9025425.2

Occupation Diagram





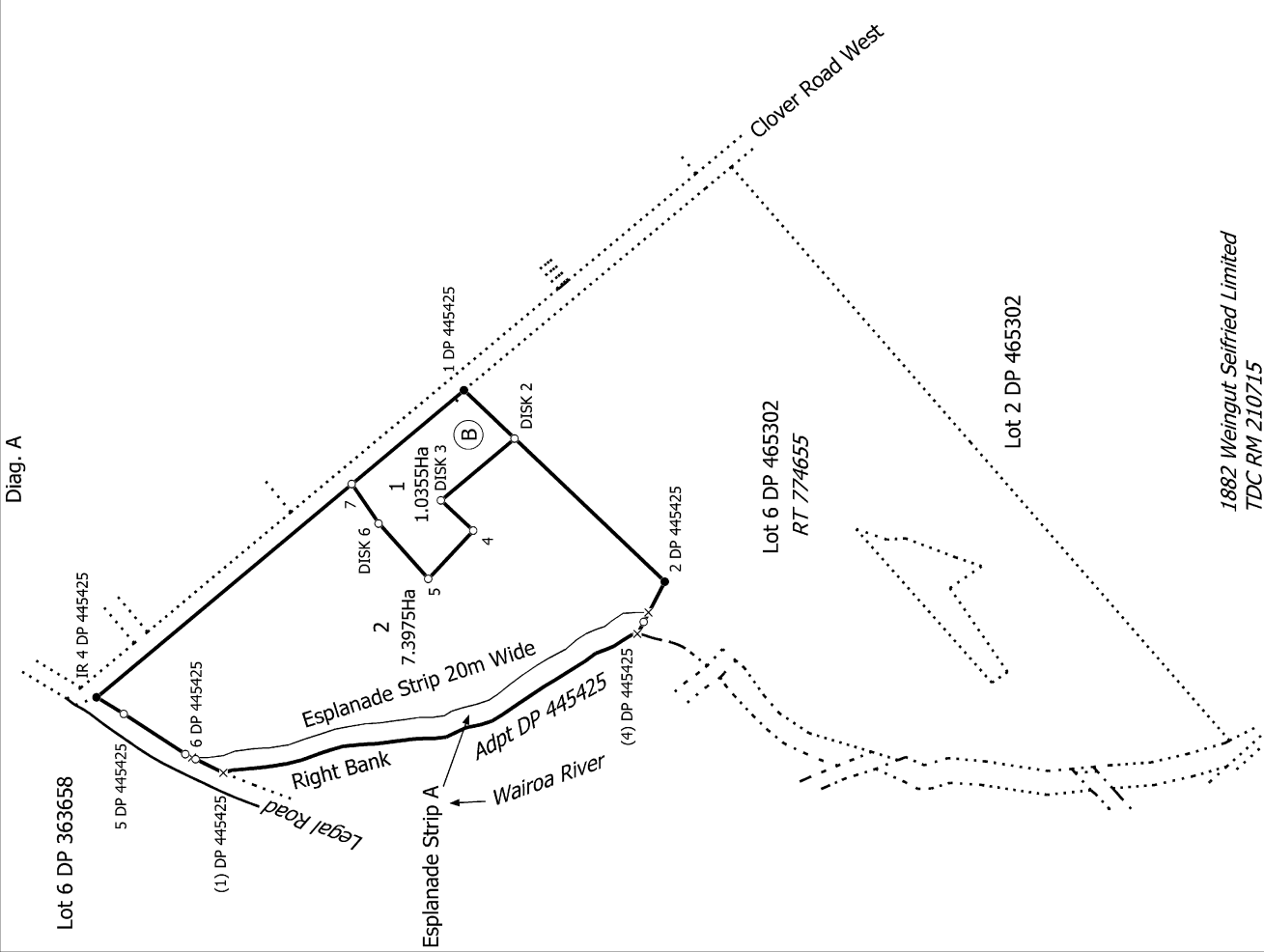
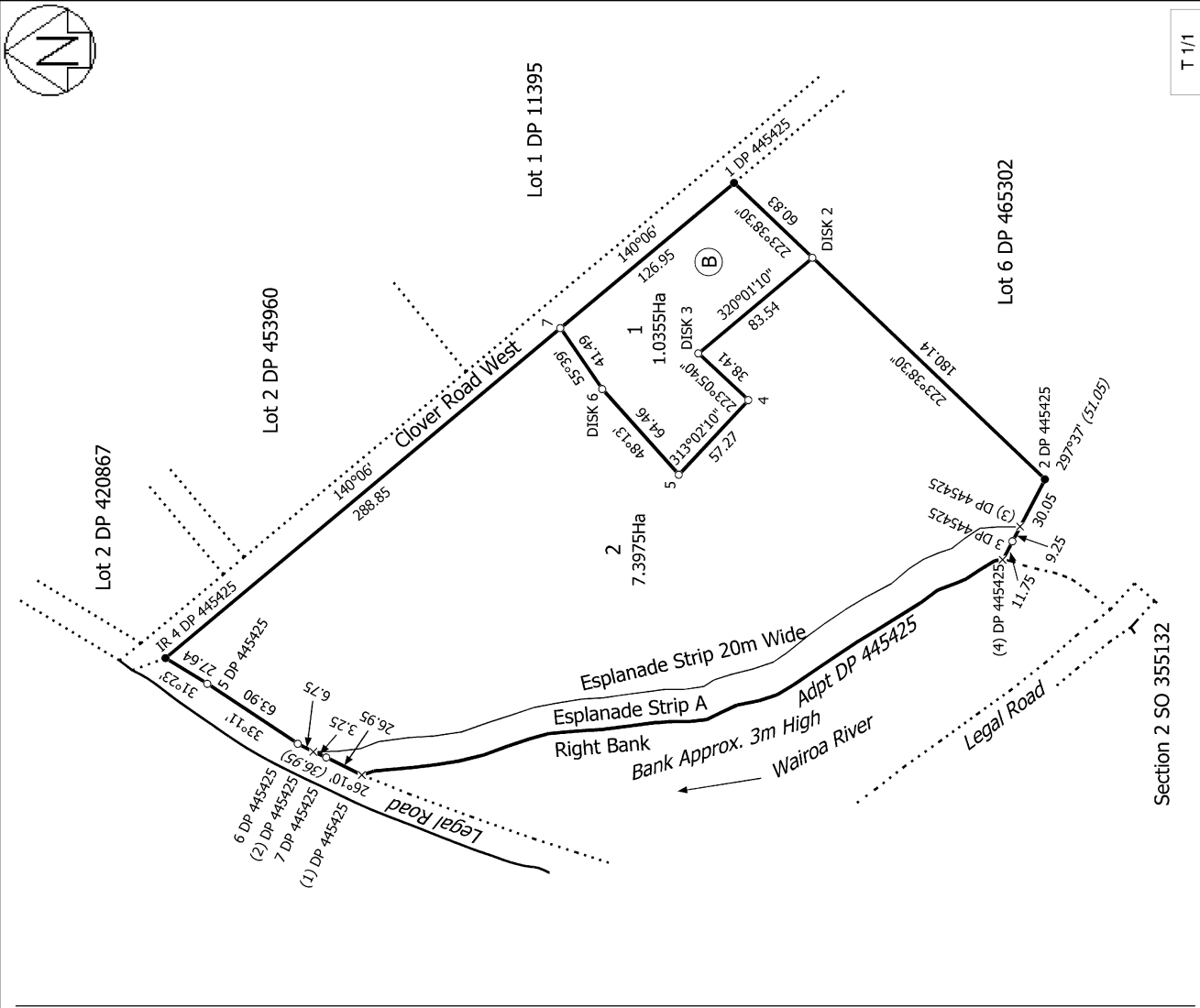
S 1/1

1882 Weingut Seifried Limited
 TDC RM 210715
 Land District: Nelson
 Digitally Generated Plan
 Generated on: 16/08/2022 2:08pm Page 7 of 8

Record of Survey
 DP 574502
 Deposited on: 5/07/2022

Surveyor: Neil Stewart Bates
 Firm: Planscapes (NZ) Limited (Nelson)
 Date of Survey: 11/03/2022

Lots 1 and 2 Being Subdivision of Lot 1 DP 445425



T 1/1	Record of Survey DP 574502 Deposited on: 5/07/2022
Surveyor: Neil Stewart Bates Firm: Planscapes (NZ) Limited (Nelson) Date of Survey: 11/03/2022	Lots 1 and 2 Being Subdivision of Lot 1 DP 445425 1882 Weingut Seifried Limited TDC RM 210715
Land District: Nelson	Digitally Generated Plan Generated on: 16/08/2022 2:08pm Page 8 of 8