

Record of Survey - DP 575215

Survey Number DP 575215
Surveyor Reference 2347 Vollebregt
Surveyor Christopher Neil Galbreath
Survey Firm Adamson Shaw (Masterton)
Surveyor Declaration I Christopher Neil Galbreath, being a licensed cadastral surveyor, certify that--
 (a) this dataset provided by me and its related survey are accurate, correct and in accordance with the Cadastral Survey Act 2002 and Cadastral Survey Rules 2021; and
 (b) the survey was undertaken by me or under my personal direction.
 Declared on 17 Jun 2022 11:01 AM

Survey Details

Dataset Description Lots 1 to 3 being subdivision of Section 13 Pahautea Settlement
Purpose LT Subdivision
Status Deposited **Type** Survey
Land District Wellington **Survey Class** Class B
Meridional Circuit Wairarapa 2000 **Vertical Datum** None

Survey Dates

Surveyed Date 08/04/2022 **Certified Date** 17/06/2022
Submitted Date 17/06/2022 11:01:53 **Survey Approval Date** 17/06/2022
Deposit Date 23/05/2022

Referenced Surveys

Survey Number	Land District	Bearing Correction
DP 62010	Wellington	0°00'00"
DP 62924	Wellington	0°00'00"
SO 18172	Wellington	0°00'00"
SO 17345	Wellington	0°00'00"

Territorial Authorities

South Wairarapa District

Comprised In

RT WN31B/61

Created Parcels

Parcels	Parcel Intent	Area	RT Reference
Lot 1 Deposited Plan 575215	Fee Simple Title	1.0003 Ha	1057139
Lot 2 Deposited Plan 575215	Fee Simple Title	1.2654 Ha	1057140
Lot 3 Deposited Plan 575215	Fee Simple Title	22.0430 Ha	1057141
Area A Deposited Plan 575215	Erosion Easement		
Total Area		24.3087 Ha	

Mark and Vector

Survey Number DP 575215

Meridional Circuit Wairarapa 2000

From	To	Code	Bearing	Adpt Surv	Bearing Correction	Distance	Adpt Surv	Class
PAHAUTEA ROAD	IT SO 17345	ob0	69°12'40" M			1,989.60 M		
IT SO 17345	IT II DP 62010	ob2	203°58'30" M			268.57 M		
IT II DP 62010	IT V DP 62010	ob3	207°55'00" M			341.22 M		
IT V DP 62010	PAHAUTEA ROAD	ob7	264°17'05" M			1,599.12 M		
PAHAUTEA ROAD	IT X SO 17345	ob1	113°25'40" M			1,481.96 M		
IT X SO 17345	IT VI DP 68465	ob13	320°10'20" M			310.47 M		
IT VI DP 68465	IT I DP 68465	ob14	35°47'00" M			176.14 M		
IT I DP 68465	IT V DP 62010	ob15	41°42'20" M			491.80 M		
IT V DP 62010	IR I DP 575215	ob8	23°45'20" M			134.74 M		
IR I DP 575215	IT II DP 62010	ob9	30°37'40" M			207.07 M		
IT II DP 62010	IT III DP 575215	ob4	122°22'00" M			91.40 M		
IT III DP 575215	IT II DP 575215	ob16	208°37'10" M			213.25 M		
IT II DP 575215	IR I DP 575215	ob17	305°44'00" M			99.21 M		
IT II DP 62010	IT III DP 62010	ob5	122°23'00" A	DP 62010	0°00'00"	91.37 A	DP 62010	
IT III DP 62010	IT IV DP 62010	ob27	11°06'00" A	DP 62010	0°00'00"	165.46 A	DP 62010	
IT IV DP 62010	IT SO 17345	ob31	0°03'30" A	DP 62010	0°00'00"	131.96 A	DP 62010	
IT III DP 62010	IT III DP 575215	ob28	77°42'00" C			0.04 C		
IT II DP 62010	PEG (1) DP 62010	ob6	84°15'00" M			4.89 M		
PEG (1) DP 62010	PEG 8 DP 575215	ob25	206°38'00" A	SO 17345	0°00'00"	134.17 C		Class B
PEG 8 DP 575215	PEG 1 DP 575215	ob32	206°38'00" A	SO 17345	0°00'00"	76.60 C		Class B
PEG 1 DP 575215	PEG (4) SO 17345	ob36	206°38'00" A	SO 17345	0°00'00"	126.39 C		Class B
PEG (4) SO 17345	IT V DP 62010	ob26	267°28'00" A	DP 62924	0°00'00"	13.58 A	DP 62924	
IT III DP 62010	POST DP 62010	ob29	8°45'00" A	DP 62010	0°00'00"	1.45 A	DP 62010	
POST DP 62010	PEG (1) DP 62010	ob35	303°30'00" A	DP 62010	0°00'00"	86.94 A	DP 62010	Class B
IT III DP 62010	PEG (2) DP 62010	ob30	87°01'00" A	DP 62010	0°00'00"	39.67 A	DP 62010	
PEG (2) DP 62010	POST DP 62010	ob42	269°04'00" A	DP 62010	0°00'00"	39.41 A	DP 62010	Class B
UNMK 12 DP 575215	PEG 9 DP 575215	ob70	116°38'00" C			11.40 C		Class B
UNMK 11 DP 575215	POST DP 62010	ob73	35°00'00" C			114.37 C		Class B
IT II DP 575215	PEG 3 DP 575215	ob18	120°18'40" M			56.98 M		
PEG 3 DP 575215	DISK 2 DP 575215	ob37	304°04'20" C			81.33 C		Class B

Mark and Vector

Survey Number DP 575215

Meridional Circuit Wairarapa 2000

From	To	Code	Bearing	Adpt Surv	Bearing Correction	Distance	Adpt Surv	Class
DISK 2 DP 575215	PEG 1 DP 575215	ob38	304°04'20"	C		56.06 C		Class B
IT II DP 575215	DISK 6 DP 575215	ob19	215°28'00"	M		103.32 M		
DISK 6 DP 575215	DISK 5 DP 575215	ob39	59°09'00"	C		66.15 C		Class B
DISK 5 DP 575215	DISK 4 DP 575215	ob40	66°33'00"	C		24.40 C		Class B
DISK 4 DP 575215	PEG 3 DP 575215	ob41	68°34'00"	C		32.19 C		Class B
PEG (2) DP 62010	PEG (3) SO 17345	ob43	89°04'00"	A SO 17345	0°00'00"	41.38 C		Class B
PEG (3) SO 17345	PEG SO 17345	ob44	152°30'00"	A SO 17345	0°00'00"	392.70 A SO 17345		
PEG SO 17345	PEG XXX SO 17345	ob45	76°10'00"	A SO 17345	0°00'00"	170.31 A SO 17345		
PEG XXX SO 17345	PEG XXXII SO 17345	ob47	198°50'00"	A SO 17345	0°00'00"	287.69 A SO 17345		
PEG XXXII SO 17345	PEG XXXIII SO 17345	ob48	195°49'00"	A SO 17345	0°00'00"	81.71 A SO 17345		
PEG XXXIII SO 17345	PEG XXXIV SO 17345	ob49	209°26'30"	A SO 17345	0°00'00"	121.93 A SO 17345		
PEG XXXIV SO 17345	PEG IV SO 18172	ob50	181°36'30"	A SO 18172	0°00'00"	116.94 A SO 18172		
PEG IV SO 18172	PEG IIIB SO 18172	ob52	235°16'00"	A SO 18172	0°00'00"	174.21 A SO 18172		
PEG IIIB SO 18172	PEG (7) SO 17345	ob53	308°54'00"	A SO 18172	0°00'00"	150.84 A SO 18172		
PEG (7) SO 17345	PEG (6) SO 17345	ob54	283°48'00"	A SO 18172	0°00'00"	104.14 A SO 18172		
PEG (6) SO 17345	IT XI SO 17345	ob55	228°26'00"	A SO 18172	0°00'00"	344.22 A SO 18172		
IT XI SO 17345	IT X SO 17345	ob56	311°06'00"	A SO 17345	0°00'00"	130.88 A SO 17345		
PEG XXXIV SO 17345	PEG (9) SO 17345	ob51	167°15'00"	A SO 17345	0°00'00"	25.23 A SO 17345		
PEG (9) SO 17345	PEG (10) SO 17345	ob57	316°38'00"	A SO 17345	0°00'00"	128.95 A SO 17345		Class B
PEG (10) SO 17345	PEG 7 DP 575215	ob59	316°38'00"	A SO 17345	0°00'00"	543.28 C		Class B
PEG 7 DP 575215	PEG (5) SO 17345	ob60	316°38'00"	A SO 17345	0°00'00"	44.47 C		Class B
PEG (5) SO 17345	PEG (4) SO 17345	ob62	38°18'00"	A SO 17345	0°00'00"	17.08 A SO 17345		Class B
PEG 7 DP 575215	DISK 6 DP 575215	ob61	57°27'00"	C		49.03 C		Class B
PEG (9) SO 17345	UNMK (1) SO 17345	ob58	136°38'00"	A SO 17345	0°00'00"	10.06 A SO 17345		Class BD

Mark and Vector

Survey Number DP 575215

Meridional Circuit Wairarapa 2000

From	To	Code	Bearing	Adpt Surv	Bearing Correction	Distance	Adpt Surv	Class
PEG SO 17345	XII (Wairarapa SD)	ob46	118°09'30"	A SO 17345	0°00'00"	142.29 A	SO 17345	
XII (Wairarapa SD)	PEG (8) SO 17345	ob63	160°20'00"	A SO 17345	0°00'00"	8.51 A	SO 17345	
PEG (8) SO 17345	PEG (2) SO 17345	ob64	299°13'00"	A SO 17345	0°00'00"	144.92 A	SO 17345	Class B
PEG (2) SO 17345	PEG (1) SO 17345	ob66	329°43'00"	A SO 17345	0°00'00"	368.24 A	SO 17345	Class B
PEG (1) SO 17345	PEG (3) SO 17345	ob67	4°08'00"	A SO 17345	0°00'00"	34.86 A	SO 17345	Class B
UNMK 15 DP 575215	UNMK (2) SO 17345	ob74	119°13'00"	A SO 17345	0°00'00"	8.86 C		Class BD
IR I DP 575215	PEG 1 DP 575215	ob10	121°27'00"	M		18.66 M		
IR I DP 575215	PEG 8 DP 575215	ob11	40°32'30"	M		77.29 M		
IR I DP 575215	PEG 9 DP 575215	ob12	75°45'00"	M		114.63 M		
IT II DP 575215	DISK 2 DP 575215	ob20	312°44'00"	M		24.75 M		
IT II DP 575215	DISK 4 DP 575215	ob21	154°37'00"	M		44.85 M		
IT II DP 575215	DISK 5 DP 575215	ob22	183°36'00"	M		50.33 M		
IT II DP 575215	PEG 7 DP 575215	ob23	222°30'00"	M		149.92 M		
PEG 8 DP 575215	UNMK 10 DP 575215	ob33	116°38'00"	C		50.49 C		Class B
UNMK 10 DP 575215	UNMK 12 DP 575215	ob68	116°38'00"	C		6.19 C		Class B
PEG 9 DP 575215	UNMK 13 DP 575215	ob34	35°00'00"	C		6.95 C		Class B
UNMK 13 DP 575215	UNMK 11 DP 575215	ob72	35°00'00"	C		3.78 C		Class B
UNMK 10 DP 575215	UNMK 11 DP 575215	ob69	87°39'00"	C		21.90 C		Class B
UNMK 12 DP 575215	UNMK 13 DP 575215	ob71	87°39'00"	C		14.19 C		Class B
IT II DP 575215	UNMK 14 DP 575215	ob24	118°20'00"	C		552.84 C		
PEG (8) SO 17345	UNMK 15 DP 575215	ob65	119°13'00"	A SO 17345	0°00'00"	1.20 C		Class BD

Mark Name	Mark Condition	Description
IR I DP 575215		Down 0.2m in grass berm.
IT II DP 575215		Down 0.2m on top grass bank.
IT II DP 62010		Down 0.25m on bank above road carriageway.

Mark and Vector

Survey Number DP 575215

Meridional Circuit Wairarapa 2000

Mark Name	Mark Condition	Description
IT III DP 575215		IT III DP 62010 Disturbed
IT SO 17345		Down 0.1m in grass berm.
IT V DP 62010		Down 0.1m in road shoulder, 0.8m from edge seal.
PAHAUTEA ROAD		SS pin in concrete block with ID plaque (10 Jul 1997). On south eastern side of Kahutara Rd 20 metres south of Pahautea Rd. ID plate attached (10 Jul 1997) Cell phone coverage good, GPS suitability excellent.
PEG SO 17345		OP no record on SO 17345
POST DP 62010		Concrete post leaning towards West
PEG (10) SO 17345	Searched For and Not Found	

*** End of Report ***

Prepared by: Chris Galbreath
Licensed Cadastral Surveyor
chris@adamsonshaw.co.nz

13 April 2022

Land Registration District

Wellington

Plan Number

LT 575215

Territorial Authority

South Wairarapa District

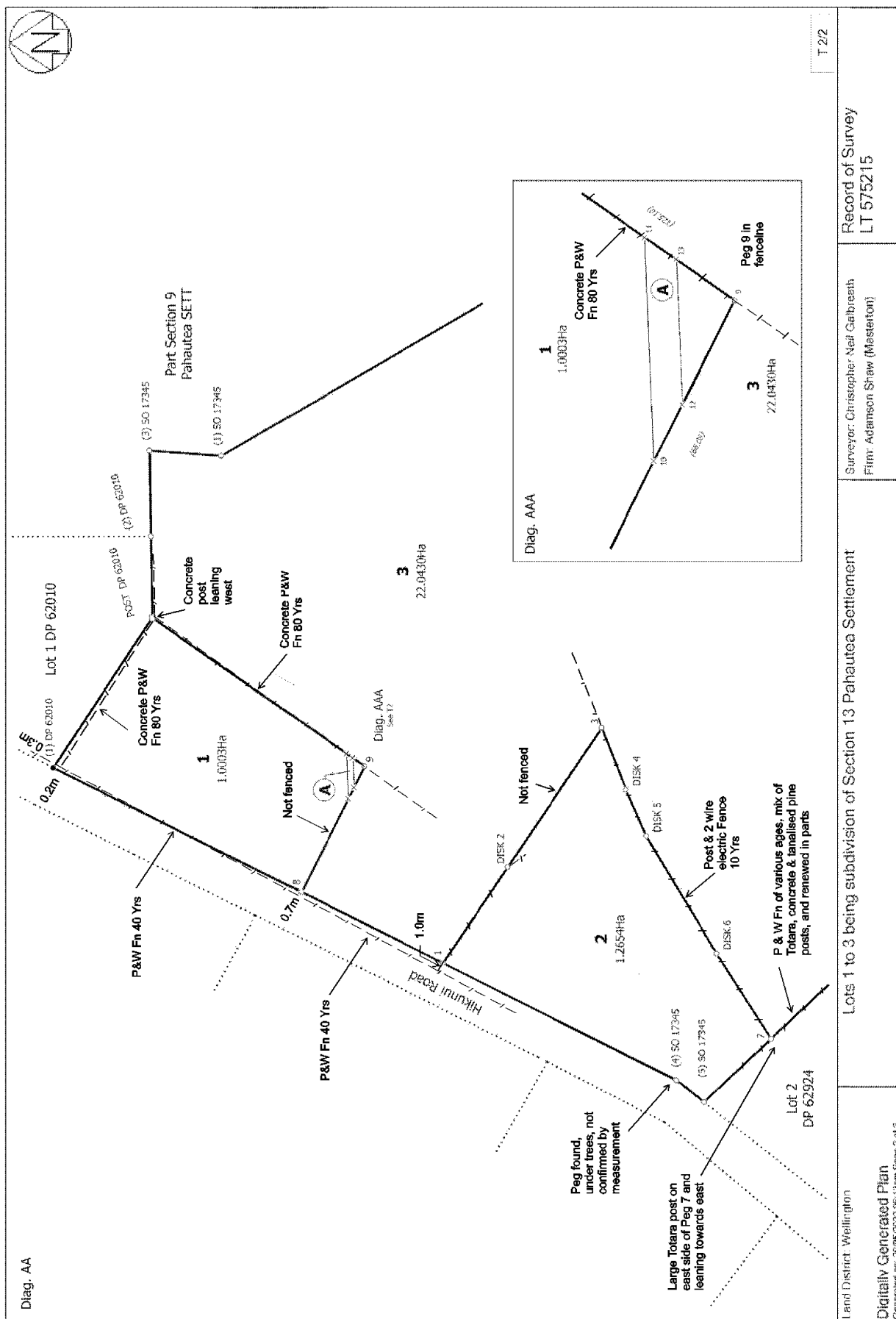
Schedule of Easements			
Purpose	Shown	Servient Tenement (Burdened Land)	Dominant Tenement (Benefited Land)
Right to convey electricity	A	Lot 1 (hereon)	Lot 3 (hereon)

Amalgamation Covenant:

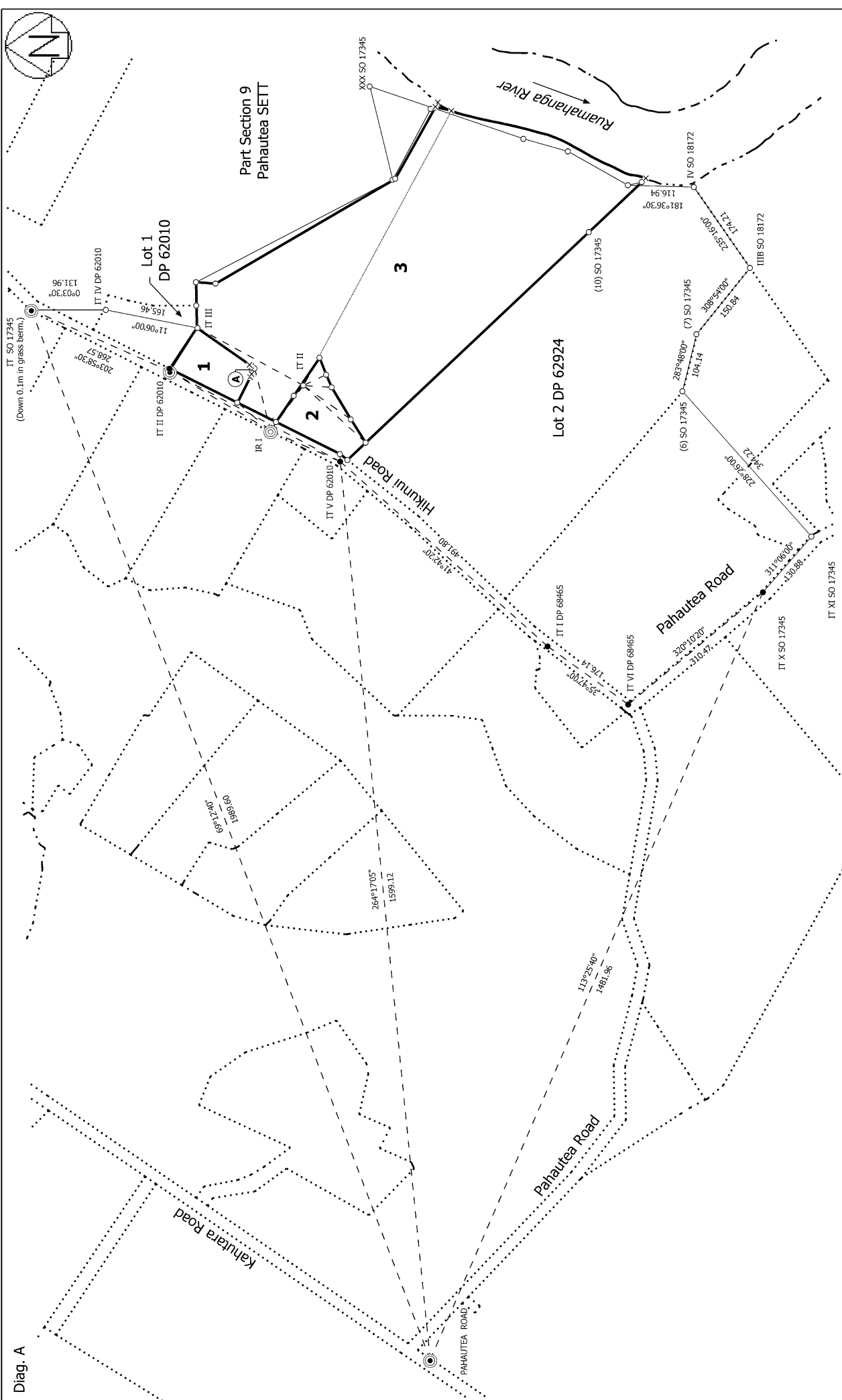
The owners of the land shown on LT 575215 have entered into an amalgamation covenant (affecting Lots 1 and 3) pursuant to section 220(2)(a) of the Resource Management Act 1991

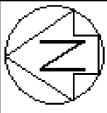
(See consultation No 1721511)

Occupation Diagram



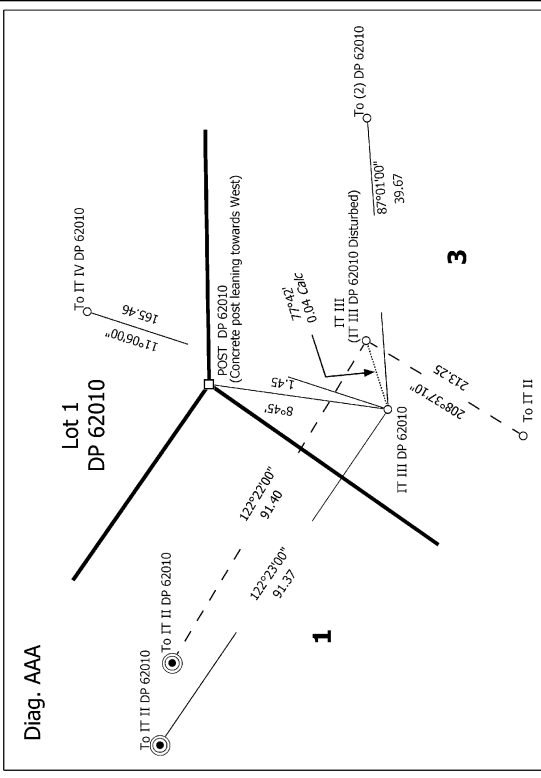
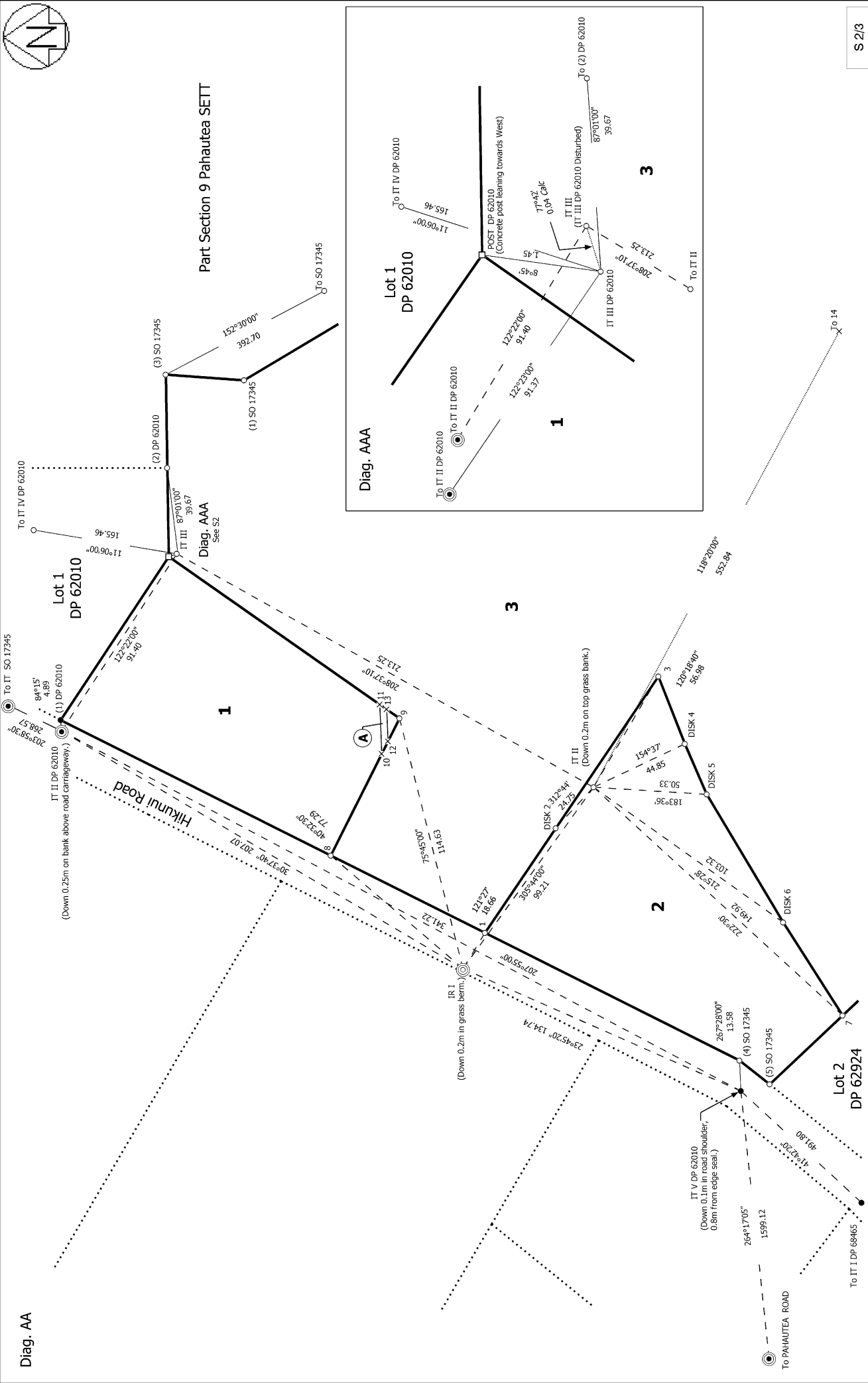
Diag. A





Diag. AA

Part Section 9 Pahautea SETT



S 2/3

Land District: Wellington

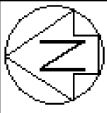
Digitally Generated Plan
Generated on: 30/06/2022 10:45am Page 10 of 13

Lots 1 to 3 being subdivision of Section 13 Pahautea Settlement

Surveyor: Christopher Neil Galbreath
Firm: Adamson Shaw (Masterston)
Date of Survey: 8/04/2022

Record of Survey
DP 575215

Deposited on: 23/05/2022



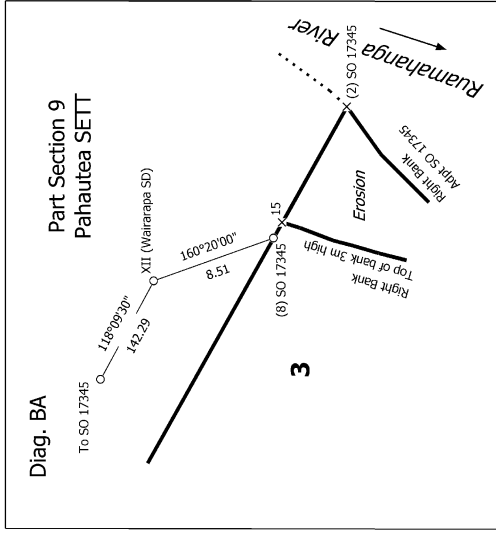
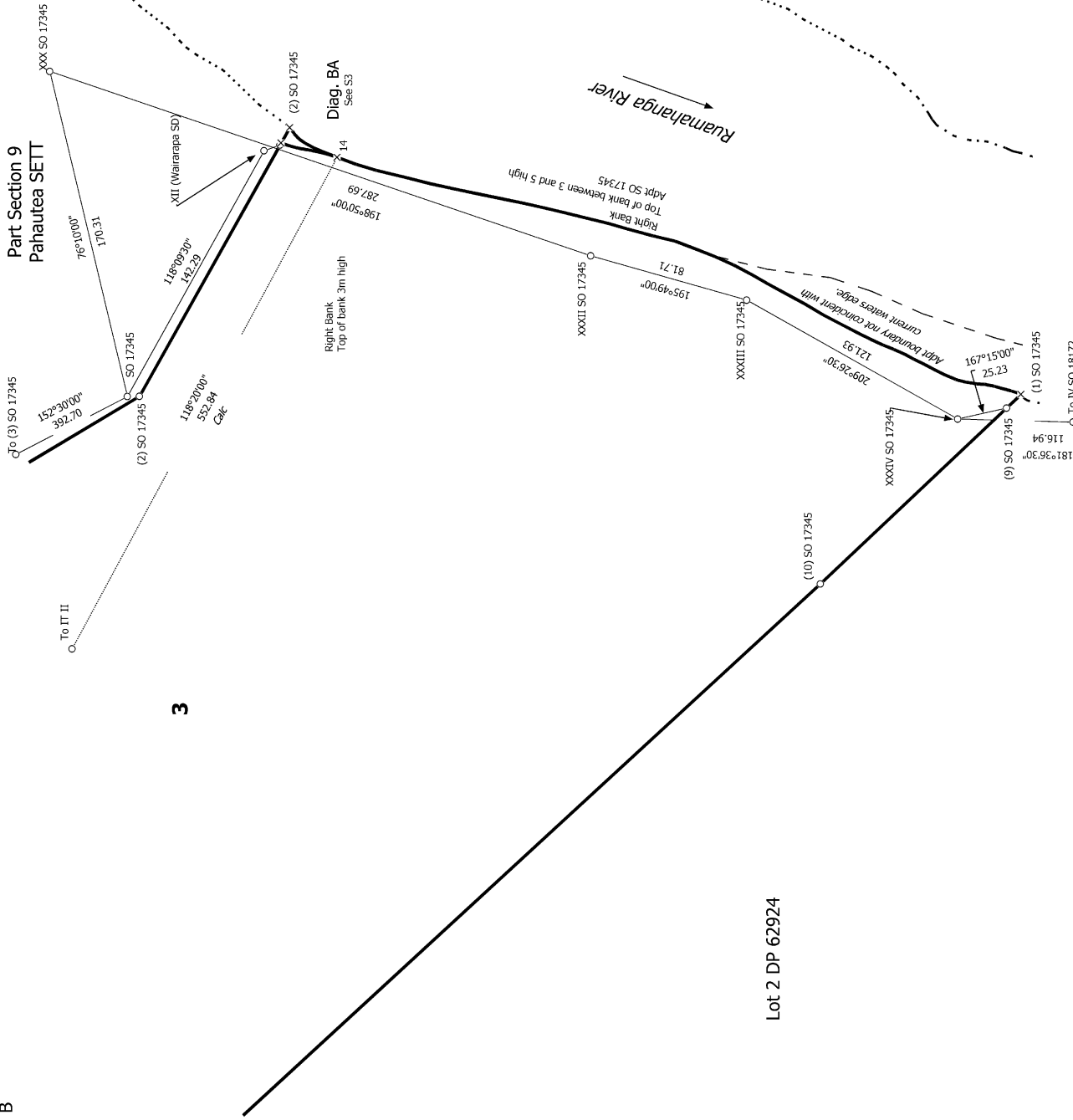
Diag. B

Lot 2 DP 62924

Part Section 9
Pahautea SETT

Part Section 9
Pahautea SETT

Diag. BA



S 3/3

Land District: Wellington

Digitally Generated Plan

Generated on: 30/06/2022 10:45am Page 11 of 13

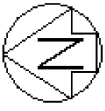
Lots 1 to 3 being subdivision of Section 13 Pahautea Settlement

Surveyor: Christopher Neil Galbreath
Firm: Adamson Shaw (Masterston)

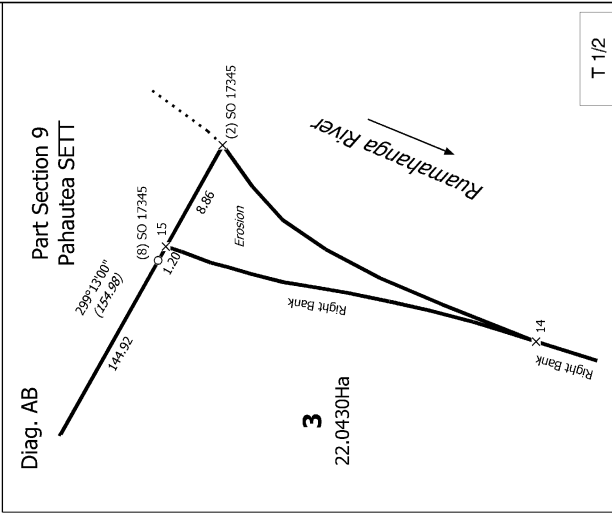
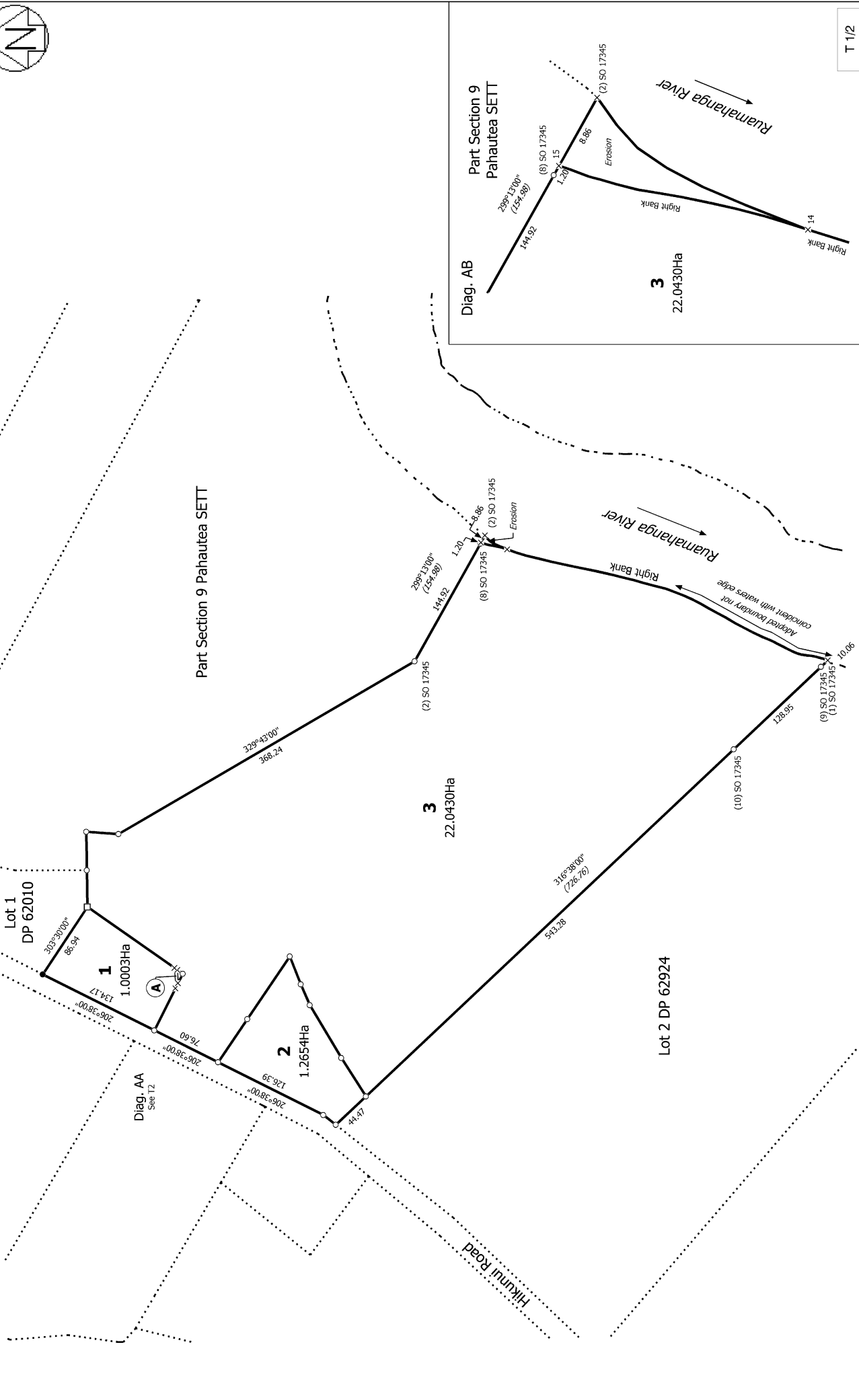
Date of Survey: 8/04/2022

Record of Survey
DP 575215

Deposited on: 23/05/2022



Diag. A



T 1/2

Land District: Wellington

Digitally Generated Plan

Generated on: 30/06/2022 10:45am Page 12 of 13

Lots 1 to 3 being subdivision of Section 13 Pahautea Settlement

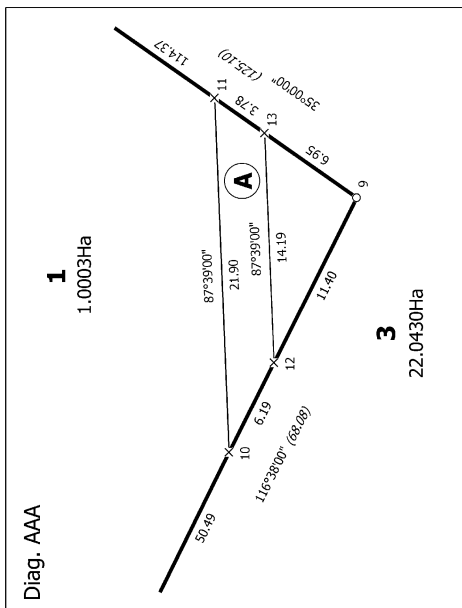
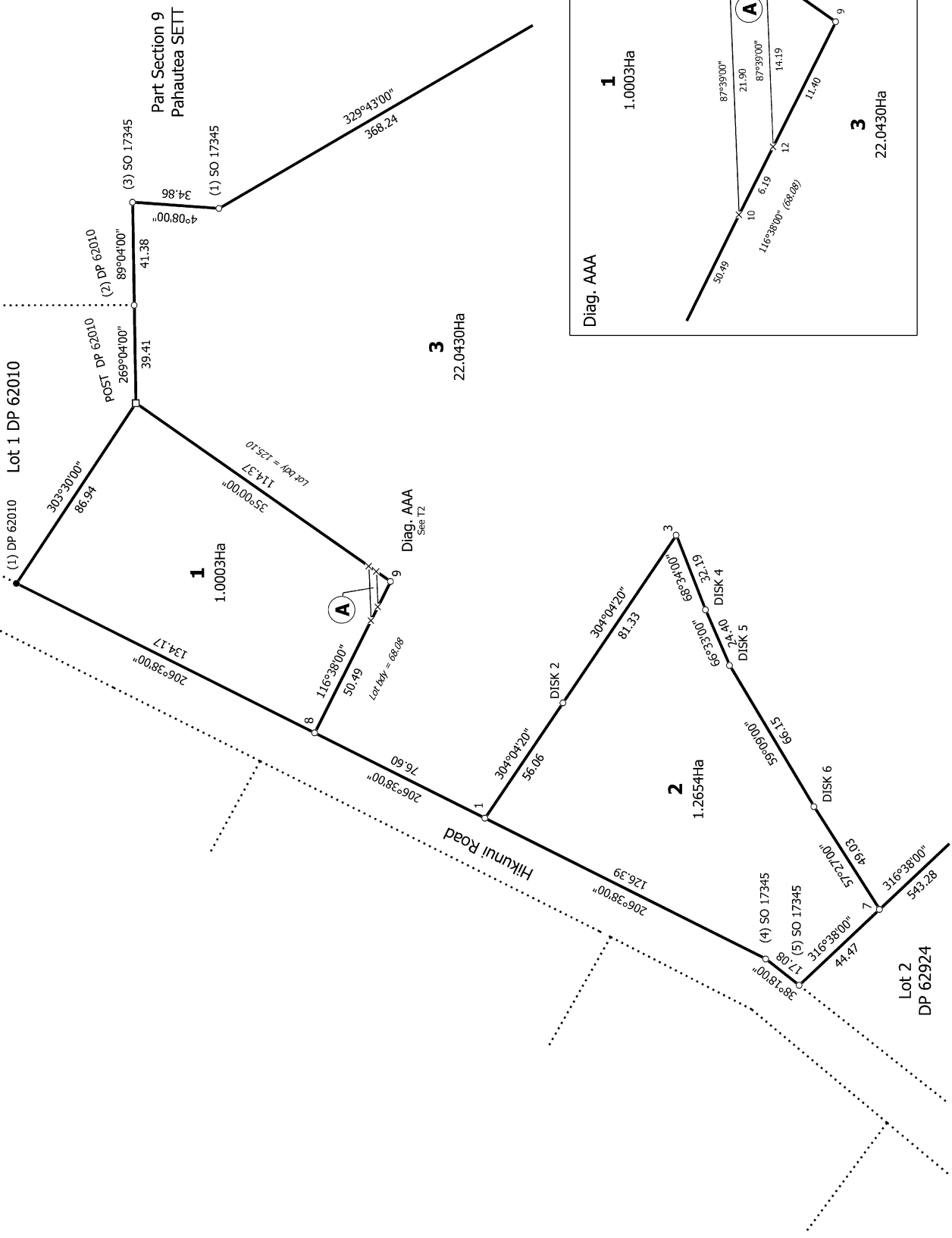
Surveyor: Christopher Neil Galbreath
Firm: Adamson Shaw (Masterston)
Date of Survey: 8/04/2022

Record of Survey
DP 575215

Deposited on: 23/05/2022



Diag. AA



T 2/2

Land District: Wellington

Digitally Generated Plan
Generated on: 30/06/2022 10:45am Page 13 of 13

Lots 1 to 3 being subdivision of Section 13 Pahautea Settlement

Surveyor: Christopher Neil Galbreath
Firm: Adamson Shaw (Masterston)
Date of Survey: 8/04/2022

Record of Survey
DP 575215

Deposited on: 23/05/2022