

Record of Survey - DP 575254

Survey Number DP 575254
Surveyor Reference 20162
Surveyor Daniel Anthony McDaid
Survey Firm Landform Surveys Ltd (Hamilton)
Surveyor Declaration I Daniel Anthony McDaid, being a licensed cadastral surveyor, certify that--
 (a) this dataset provided by me and its related survey are accurate, correct and in accordance with the Cadastral Survey Act 2002 and Cadastral Survey Rules 2021; and
 (b) the survey was undertaken by me or under my personal direction.
 Declared on 30 Aug 2022 01:54 PM

Survey Details

Dataset Description	Lots 1-2 being a subdivision of Pt Mangawhero No 2A3A1 Block & Pt Mangawhero No 2A3A2 Block		
Purpose	LT Subdivision		
Status	Deposited	Type	Survey
Land District	South Auckland	Survey Class	Class B
Meridional Circuit	Mount Eden 2000	Vertical Datum	None

Survey Dates

Surveyed Date	09/05/2022	Certified Date	30/08/2022
Submitted Date	30/08/2022 13:54:09	Survey Approval Date	31/08/2022
Deposit Date	02/08/2022		

Referenced Surveys

Survey Number	Land District	Bearing Correction
SO 449173	South Auckland	0°00'00"
ML 13940	South Auckland	0°00'00"
ML 9932	South Auckland	0°00'00"
ML 15838	South Auckland	0°00'00"
SO 18650	South Auckland	0°00'00"
DP 23987	South Auckland	0°00'00"
ML 8755	South Auckland	0°00'00"
DP 523297	South Auckland	0°00'00"

Territorial Authorities

Otorohanga District

Comprised In

RT SA944/100

Created Parcels

Parcels	Parcel Intent	Area	RT Reference
Lot 1 Deposited Plan 575254	Fee Simple Title	0.7869 Ha	1054854
Lot 2 Deposited Plan 575254	Fee Simple Title Erosion	10.9040 Ha	1054855



Record of Survey - DP 575254

Created Parcels

Parcels	Parcel Intent	Area	RT Reference
Esplanade Strip A Deposited Plan 575254	Erosion		
Esplanade Strip B Deposited Plan 575254	Esplanade Strip		
	Esplanade Strip		
Total Area		<hr/> 11.6909 Ha	

Mark and Vector

Survey Number DP 575254

Meridional Circuit Mount Eden 2000

From	To	Code	Bearing	Adpt Surv	Bearing Correction	Distance	Adpt Surv	Class
IB 1 DP 523297	IB 2 DP 523297	ob0	117°51'20" M			179.23 M		
IB 2 DP 523297	IB 4 DP 523297	ob1	118°03'00" M			357.94 M		
IT SO 18650	IB 1 DP 523297	ob2	98°49'00" M			393.89 M		
IT SO 18650	BP 1 SO 523468	ob3	291°22'40" M			3,146.76 M		
BP 1 SO 523468	IB 1 DP 523297	ob8	109°59'17" M			3,532.25 M		
IT SO 18650	IS 1 DP 575254	ob4	287°15'01" M			1,071.06 M		
IS 1 DP 575254	BP 1 SO 523468	ob9	293°30'05" M			2,079.90 M		
IT SO 18650	IB 2 DP 575254	ob5	279°49'17" M			1,048.21 M		
IB 2 DP 575254	BP 1 SO 523468	ob13	297°02'05" M			2,130.17 M		
IS 1 DP 575254	IB 2 DP 575254	ob10	184°06'20" M			139.18 M		
IS 1 DP 575254	IB 3 DP 575254	ob11	141°43'25" M			105.15 M		
IB 3 DP 575254	IB 2 DP 575254	ob15	233°09'10" M			93.84 M		
IT SO 18650	IT III DP 425064	ob6	287°01'28" M			1,897.08 M		
IT III DP 425064	IS 1 DP 575254	ob27	106°43'56" M			826.05 M		
IS 1 DP 575254	IB I ML 16836	ob12	285°26'56" M			731.89 M		
IB I ML 16836	IT III DP 425064	ob28	296°36'50" M			95.79 M		
IT SO 18650	IB 2 SO 449173	ob7	186°35'30" A	DP 523297	0°00'00"	283.22 A	DP 523297	
IB I ML 16836	PEG I ML 15838	ob29	105°21'00" A	ML 15838	0°00'00"	120.28 C		
PEG I ML 15838	POST ML 15838	ob30	105°21'00" A	ML 15838	0°00'00"	120.70 A	ML 15838	
POST ML 15838	PIPE ML 15838	ob31	105°21'00" A	ML 15838	0°00'00"	35.20 A	ML 15838	
PIPE ML 15838	PEG II ML 13940	ob32	105°21'00" A	ML 15838	0°00'00"	0.99 A	ML 15838	
PEG II ML 13940	PEG (1) SO 18650	ob33	105°21'00" A	ML 13940	0°00'00"	269.08 A	ML 13940	
PEG (1) SO 18650	PEG X ML 9932	ob34	106°28'30" A	ML 13940	0°00'00"	60.87 A	ML 13940	
PEG X ML 9932	PEG (5) SO 18650	ob35	106°28'30" A	SO 18650	0°00'00"	123.36 A	DP 23987	
PEG (5) SO 18650	PEG (6) SO 18650	ob36	106°28'30" A	SO 18650	0°00'00"	52.44 A	SO 18650	Class B
PEG (6) SO 18650	PEG 10 DP 575254	ob38	106°28'30" A	SO 18650	0°00'00"	20.00 C		Class B
PEG 10 DP 575254	PEG (4) SO 18650	ob46	106°28'30" A	SO 18650	0°00'00"	385.57 C		Class B
PEG (4) SO 18650	PEG XVIII SO 18650	ob39	352°21'00" A	SO 18650	0°00'00"	22.03 A	SO 18650	
PEG XVIII SO 18650	PEG XVII SO 18650	ob41	99°13'00" A	SO 18650	0°00'00"	115.85 A	SO 18650	
PEG XVII SO 18650	PEG XVI SO 18650	ob42	111°36'30" A	SO 18650	0°00'00"	377.63 A	SO 18650	
PEG XVI SO 18650	PEG XV SO 18650	ob43	111°36'30" A	SO 18650	0°00'00"	133.88 A	SO 18650	
PEG XV SO 18650	IT SO 18650	ob44	247°46'20" A	SO 18650	0°00'00"	3.02 A	SO 18650	

Mark and Vector

Survey Number DP 575254

Meridional Circuit Mount Eden 2000

From	To	Code	Bearing	Adpt Surv	Bearing Correction	Distance	Adpt Surv	Class
PEG (5) SO 18650	PEG 11 DP 575254	ob37	184°33'00"	A SO 18650	0°00'00"	116.00 C		Class B
PEG 11 DP 575254	PEG ML 8755	ob48	184°33'00"	A SO 18650	0°00'00"	92.17 C		Class B
PEG 10 DP 575254	AD 12 DP 575254	ob47	184°04'40"	C		104.86 C		Class B
AD 12 DP 575254	PEG 11 DP 575254	ob49	277°35'00"	C		71.83 C		Class B
PEG ML 8755	PEG VIIIA ML 8755	ob45	184°33'00"	A ML 8755	0°00'00"	110.24 A ML 8755		Class B
PEG VIIIA ML 8755	PEG VIIIB ML 8755	ob50	73°05'00"	A ML 8755	0°00'00"	54.90 A ML 8755		
PEG VIIIB ML 8755	PEG IX ML 8755	ob52	73°05'00"	A ML 8755	0°00'00"	27.48 A ML 8755		
PEG IX ML 8755	PEG X ML 8755	ob54	111°39'00"	A ML 8755	0°00'00"	311.15 A ML 8755		
PEG X ML 8755	PEG XI ML 8755	ob55	3°46'00"	A ML 8755	0°00'00"	225.11 A ML 8755		
PEG XI ML 8755	PEG XII ML 8755	ob56	70°26'00"	A ML 8755	0°00'00"	158.94 A ML 8755		
PEG XII ML 8755	PEG XIIB ML 8755	ob57	306°37'00"	A ML 8755	0°00'00"	94.43 A ML 8755		
PEG XIIB ML 8755	PEG XVIII SO 18650	ob58	172°21'00"	A SO 18650	0°00'00"	34.36 A SO 18650		
PEG (4) SO 18650	UNMK ML 8755	ob40	172°21'00"	A SO 18650	0°00'00"	6.18 A SO 18650		Class BD
PEG VIIIB ML 8755	UNMK ML 8755	ob53	184°33'00"	A ML 8755	0°00'00"	4.02 A ML 8755		
PEG VIIIA ML 8755	UNMK ML 8755	ob51	184°33'00"	A ML 8755	0°00'00"	1.61 A ML 8755		Class BD
IB 3 DP 575254	UNMK 64 DP 575254	ob16	118°13'40"	C		330.47 C		
IB 3 DP 575254	UNMK 56 DP 575254	ob17	125°59'50"	C		341.36 C		
IB 3 DP 575254	UNMK 55 DP 575254	ob18	128°11'20"	C		387.95 C		
IB 3 DP 575254	UNMK 60 DP 575254	ob19	129°56'00"	C		404.93 C		
IB 3 DP 575254	UNMK 57 DP 575254	ob20	142°49'30"	C		398.22 C		
IB 3 DP 575254	UNMK 54 DP 575254	ob21	144°17'40"	C		385.15 C		
IB 3 DP 575254	UNMK 53 DP 575254	ob22	162°37'30"	C		295.07 C		
IB 3 DP 575254	UNMK 63 DP 575254	ob23	165°55'30"	C		269.05 C		
IB 2 DP 575254	PEG 11 DP 575254	ob14	358°27'00"	M		21.42 M		

Mark and Vector

Survey Number DP 575254

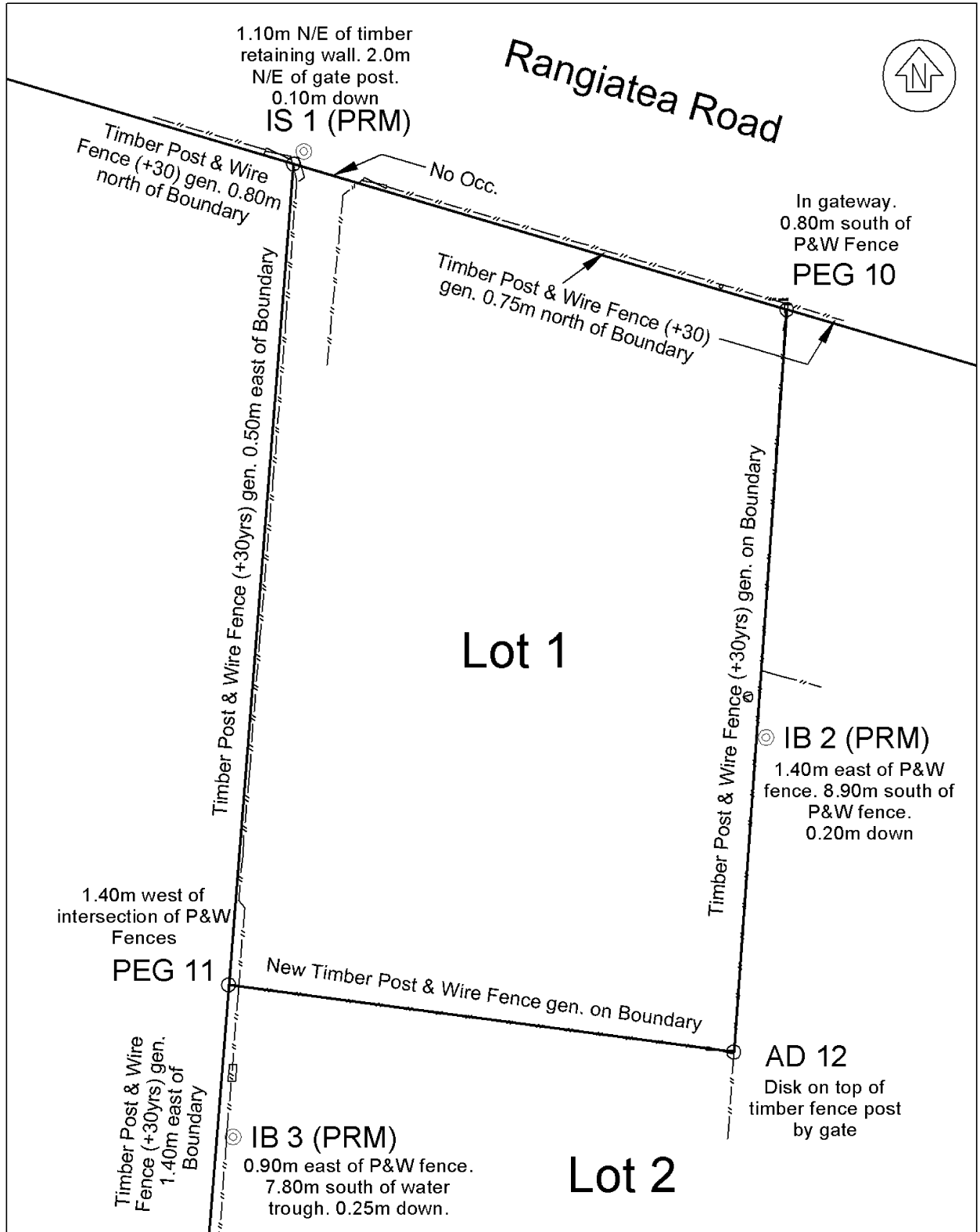
Meridional Circuit Mount Eden 2000

From	To	Code	Bearing	Adpt Surv	Bearing Correction	Distance	Adpt Surv	Class
IB 3 DP 575254	PEG 10 DP 575254	ob24	2°50'00" M			60.33 M		
IB 3 DP 575254	AD 12 DP 575254	ob25	185°46'00" M			44.57 M		
IB 2 SO 449173	IB 3 SO 449173	ob26	256°02'40" A	SO 449173	0°00'00"	112.49 A	SO 449173	

Mark Name	Mark Condition	Description
AD 12 DP 575254		Disk on top of fence post by gate.
BP 1 SO 523468		Plaque flush in channel of kerb. 3.20m N/W of valve. Outside No. 97 Rangiatea Road.
IB 1 DP 523297		1.10m south of P&W fence. 4.80m S/E of gate post. 0.20m down.
IB 2 DP 523297		1.20m north of P&W fence. 23.60m S/E of gate post. 0.20m down.
IB 2 DP 575254		1.40m east of P & W fence. 8.90m south of P & W fence. 0.20m down.
IB 3 DP 575254		0.90m east of P & W fence. 7.80m south of water trough. 0.25m down.
IB 4 DP 523297		0.90m east of P&W fence line, on eastern side of farm race. 0.20m down.
IB I ML 16836		2.40m south of road frontage p&w fence. 3.20m east of corner of fence.
IS 1 DP 575254		1.10m NE of timber retaining wall. 2.00m NE of gatepost. 0.10m down
IT III DP 425064		1.35m east of corner of fence. 1.85m N/W of postbox post. 2.30m S/W of corner of fence. Outside No. 129 Rangiatea Road.
IT SO 18650		In P&W fence line. 4.30m west of anchor pole. 2.0m west of corner fence post.
PEG 10 DP 575254		In gateway. 0.80m south of P & W fence.
PEG 11 DP 575254		1.40m west of intersection of P & W fences.

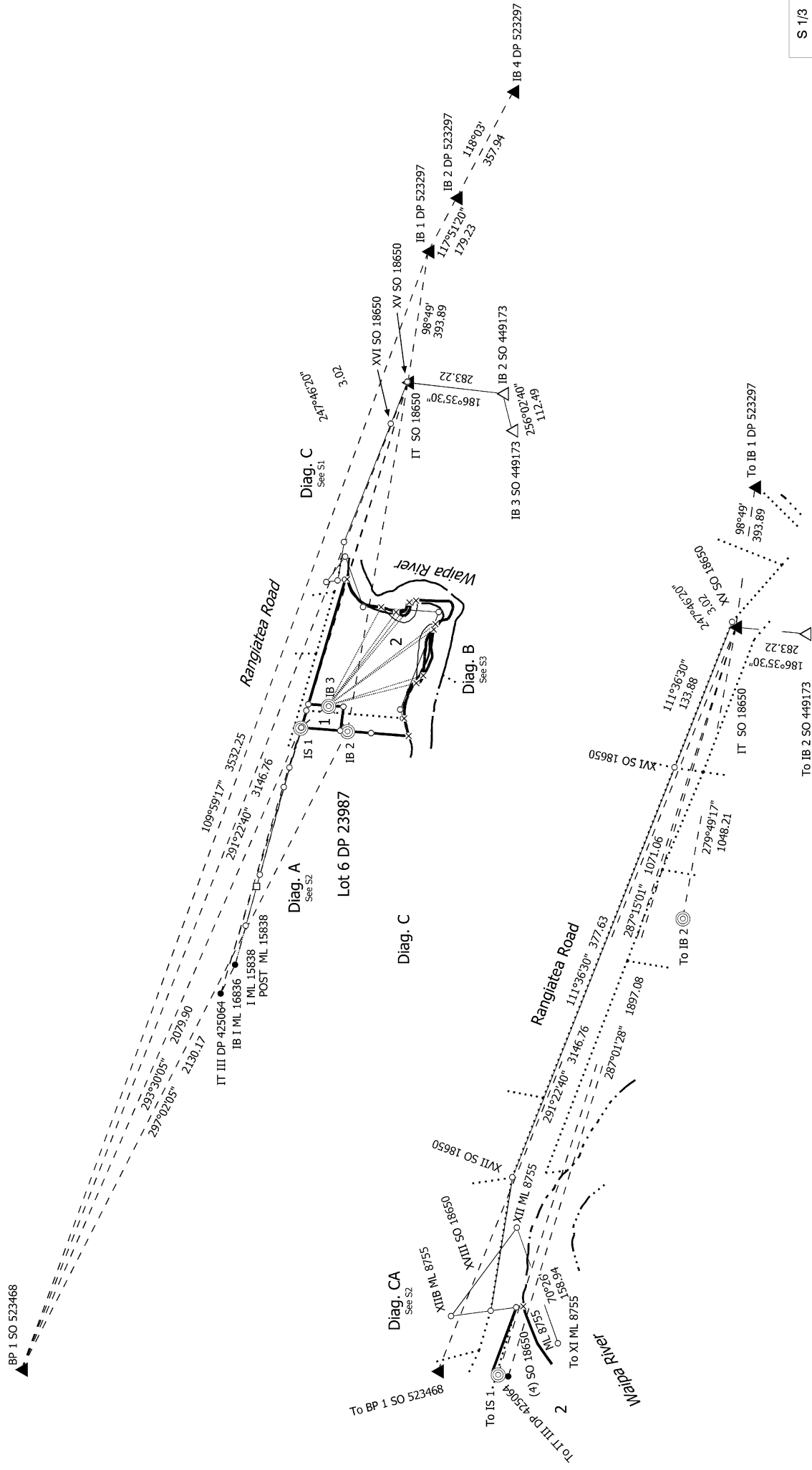
*** End of Report ***

Occupation Diagram



DP 575245
Occupation Diagram

	Mob: 021 381153 Ph: 07 856 4955 Email: dan@landformsurveys.co.nz	Scale(A4) 1: N.T.S.	Job No. 20162
	266 Clyde St, Hamilton East P.O. Box 4264 Hamilton East 3217	Date: July 2022	
		Survey/Des: DW	
		Approved: D.McD	



S 1/3

Land District: South Auckland
Digitally Generated Plan
Generated on: 08/09/2022 10:31:am Page 7 of 10

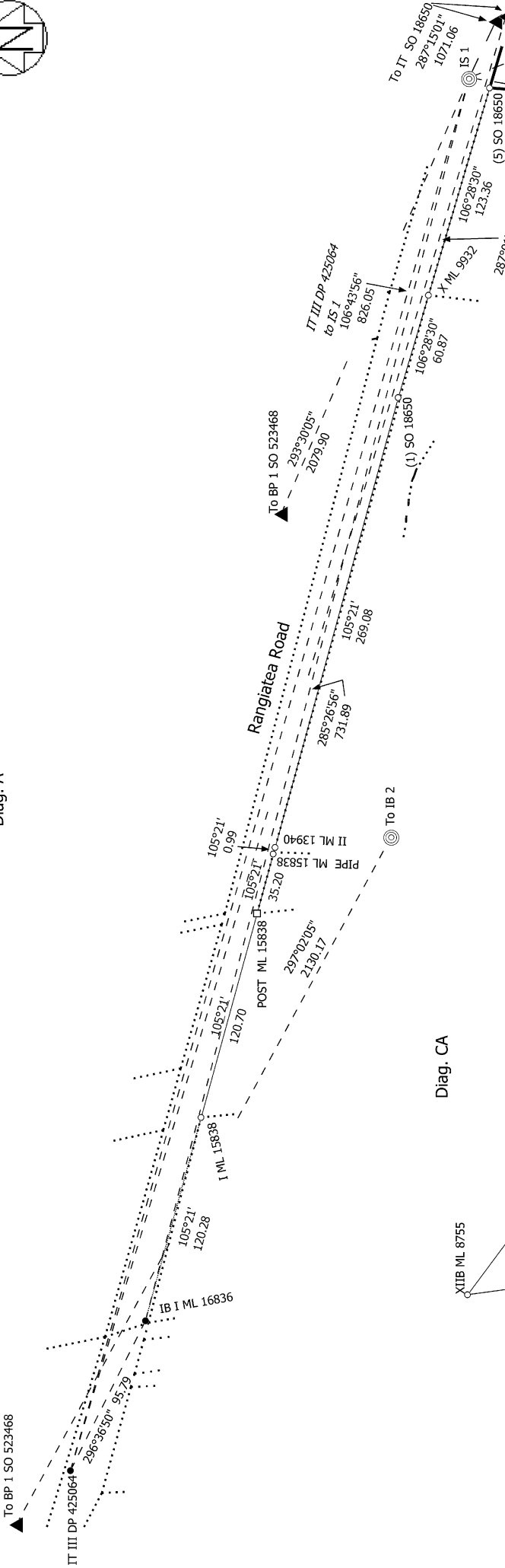
Lots 1-2 being a subdivision of Pt Mangawhero No 2A3A1 Block & Pt Mangawhero No 2A3A2 Block

Surveyor: Daniel Anthony McDavid
Firm: Landform Surveys Ltd (Hamilton)
Date of Survey: 9/05/2022

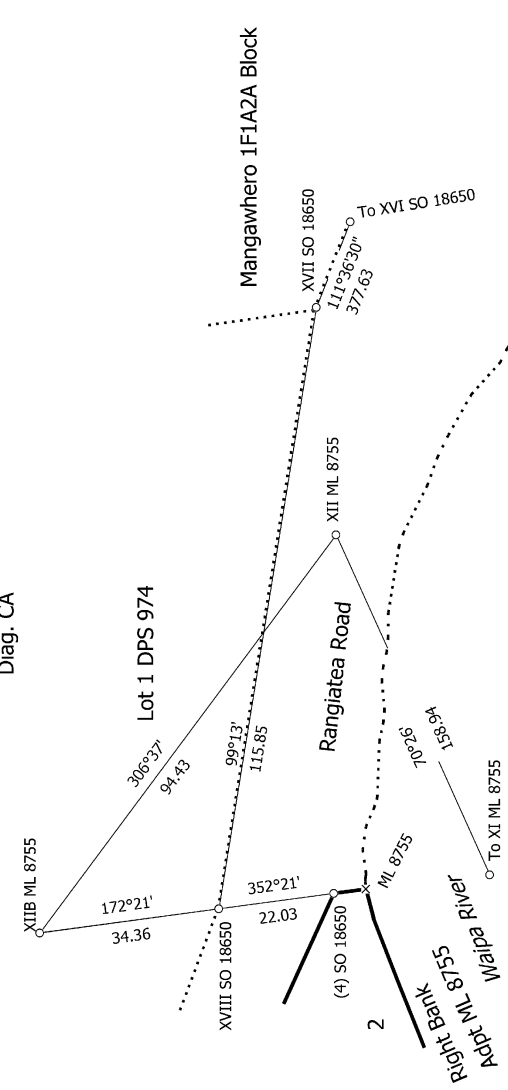
Record of Survey
DP 575254
Deposited on: 2/08/2022

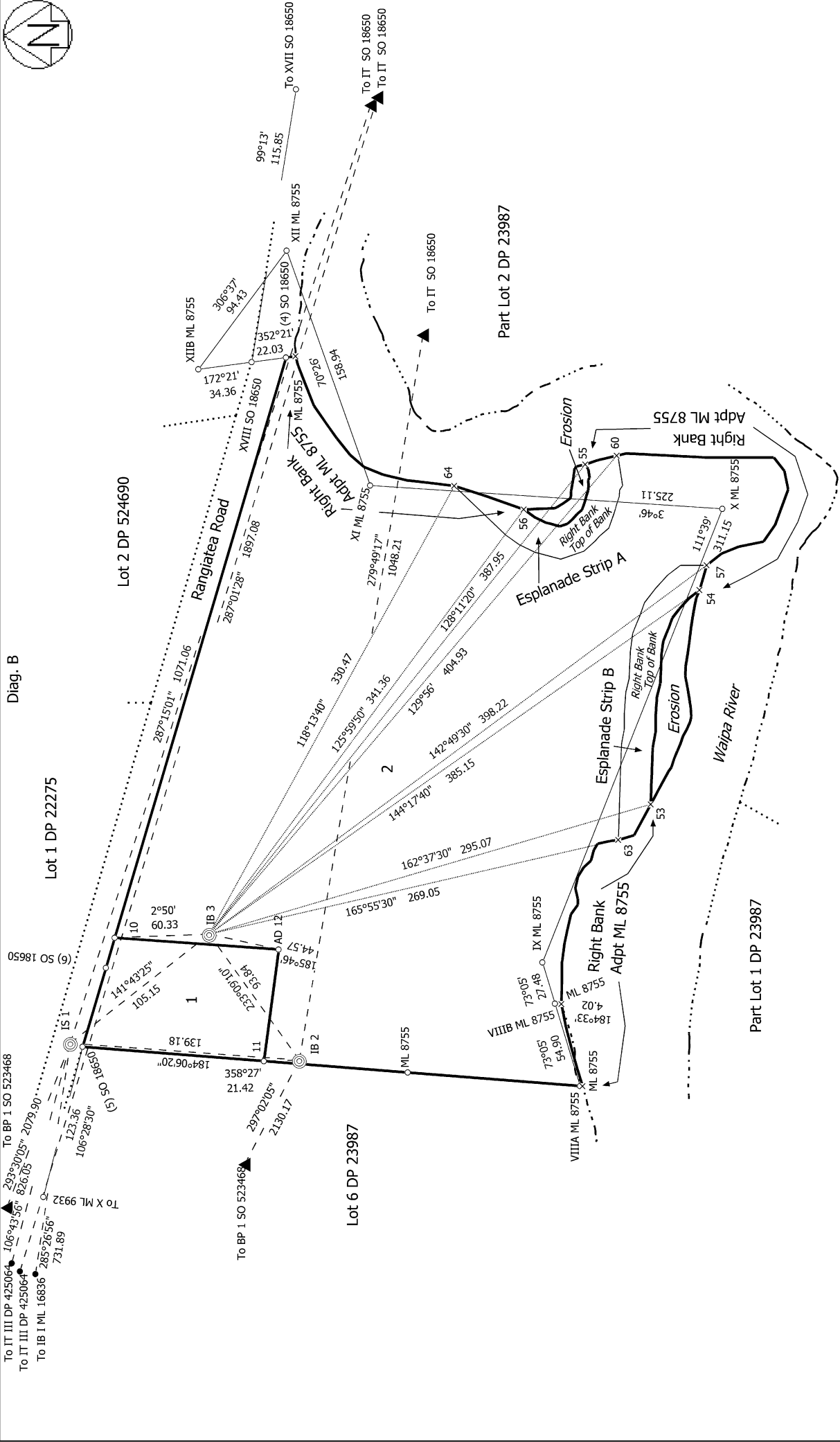
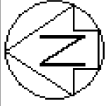


Diag. A



Diag. CA

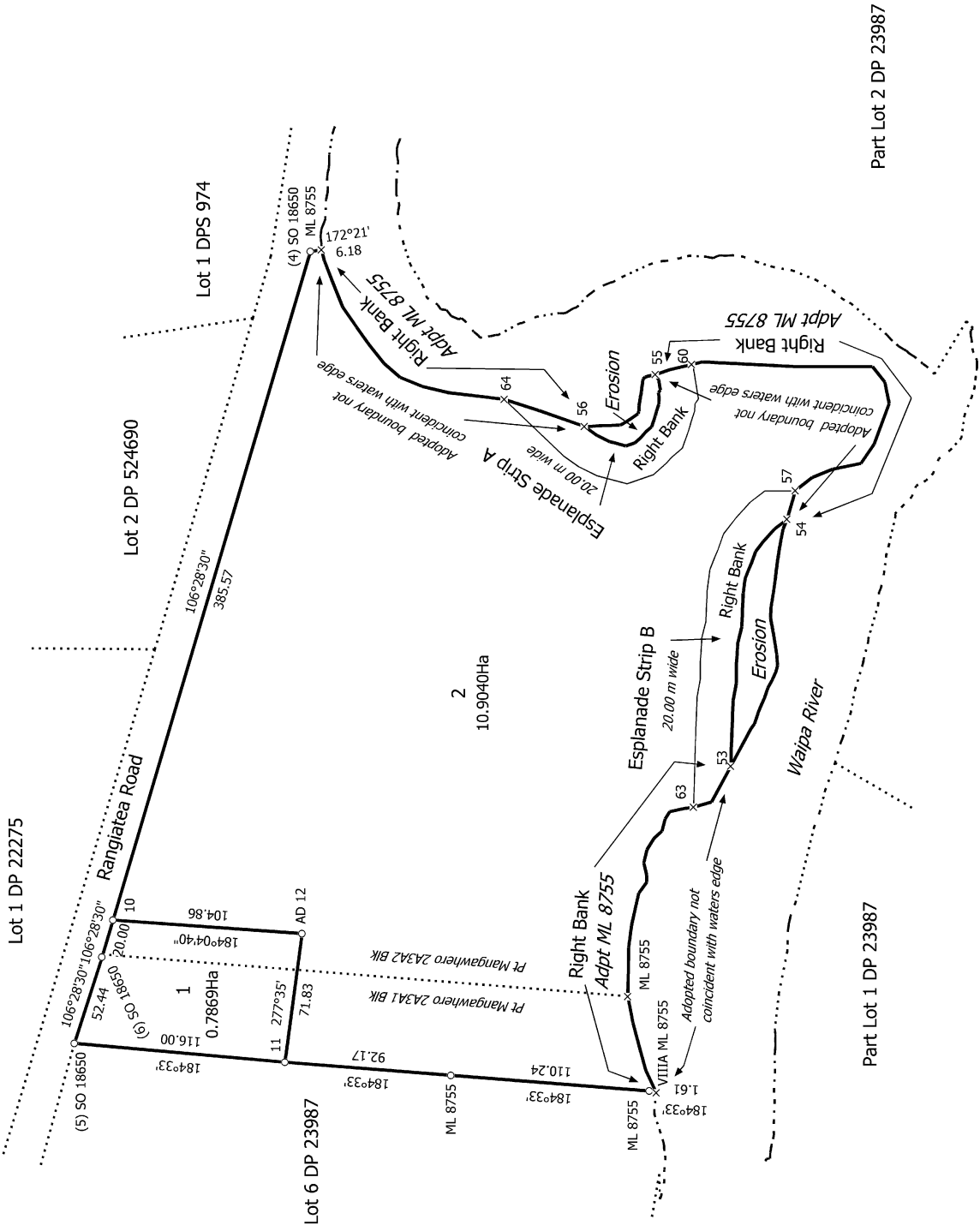
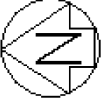




Record of Survey
DP 575254
Deposited on: 2/08/2022

Surveyor: Daniel Anthony McDavid
Firm: Landform Surveys Ltd (Hamilton)
Date of Survey: 9/05/2022

Lots 1-2 being a subdivision of Pt Mangawhero No 2A3A1 Block & Pt Mangawhero No 2A3A2 Block



Part Lot 2 DP 23987

Part Lot 1 DP 23987

T 1/1