



# Record of Survey - DP 575696

---

**Survey Number** DP 575696  
**Surveyor Reference** GSL21163 - 48 & 50 Salisbury Street  
**Surveyor** Stuart William Greer  
**Survey Firm** Graham Surveying Limited  
**Surveyor Declaration** I Stuart William Greer, being a licensed cadastral surveyor, certify that--  
(a) this dataset provided by me and its related survey are accurate, correct and in accordance with the Cadastral Survey Act 2002 and Cadastral Survey Rules 2021; and  
(b) the survey was undertaken by me or under my personal direction.  
Declared on 16 Sep 2022 12:12 PM

---

## Survey Details

**Dataset Description** Lots 1 & 2 Being a Subdivision of Part Section 97 TN of Christchurch & Part Lot 1 DP 653  
**Purpose** Limited Title  
**Status** Deposited **Type** Survey  
**Land District** Canterbury **Survey Class** Class A  
**Meridional Circuit** Mount Pleasant 2000 **Vertical Datum** None

---

## Survey Dates

**Surveyed Date** 13/04/2022 **Certified Date** 16/09/2022  
**Submitted Date** 16/09/2022 12:12:53 **Survey Approval Date** 20/09/2022  
**Deposit Date** 12/07/2022

---

## Referenced Surveys

Survey Number	Land District	Bearing Correction
DP 467520	Canterbury	0°00'00"
DP 47571	Canterbury	0°00'25"
DP 5880	Canterbury	-0°00'15"
DP 653	Canterbury	-0°00'15"
FB 2406/94	Canterbury	0°00'00"
LT 442337	Canterbury	0°00'00"
SO 464023	Canterbury	0°00'00"
SO 469374	Canterbury	0°00'00"
DP 474236	Canterbury	0°00'00"
SO 478901	Canterbury	0°00'00"
DP 532742	Canterbury	0°00'00"
SO 549169	Canterbury	0°00'00"
LT 559897	Canterbury	0°00'00"
SO 483330	Canterbury	0°00'00"

---

## Territorial Authorities

Christchurch City

---

## Comprised In

RT CB7B/543 Ltd

---



# Record of Survey - DP 575696

---

**Comprised In**

RT CB516/209

---

**Created Parcels**

<b>Parcels</b>	<b>Parcel Intent</b>	<b>Area</b>	<b>RT Reference</b>
Lot 1 Deposited Plan 575696	Fee Simple Title	0.0203 Ha	1057170
Lot 2 Deposited Plan 575696	Fee Simple Title	0.0365 Ha	1057171
<b>Total Area</b>		<u>0.0568 Ha</u>	

# Mark and Vector

Survey Number DP 575696

Meridional Circuit Mount Pleasant 2000

From	To	Code	Bearing	Adpt Surv	Bearing Correction	Distance	Adpt Surv	Class
IS I DP 302096	IT 1 DP 532742	ob0	236°27'40"	A DP 532742	0°00'00"	157.95 A	DP 532742	
IT 1 DP 532742	MA 7 DP 532742	ob2	175°06'00"	A DP 532742	0°00'00"	48.23 A	DP 532742	
MA 7 DP 532742	IS 8 DP 532742	ob5	90°17'40"	A DP 532742	0°00'00"	110.53 A	DP 532742	
IS 8 DP 532742	IS I LT 559897	ob6	92°37'00"	M		33.98 M		
IS I LT 559897	IS I DP 302096	ob10	352°58'45"	A LT 559897	0°00'00"	138.49 A	LT 559897	
IT 1 DP 532742	MA 6 DP 532742	ob3	77°50'30"	A DP 532742	0°00'00"	37.72 A	DP 532742	
MA 6 DP 532742	MA 5 DP 532742	ob11	85°19'40"	M		68.42 M		
MA 5 DP 532742	RN III FB 2406/94	ob12	166°13'30"	M		41.40 M		
RN III FB 2406/94	IS 8 DP 532742	ob14	180°43'00"	M		21.92 M		
IT 1 DP 532742	MA 5 DP 532742	ob4	82°40'20"	A DP 532742	0°00'00"	105.95 A	DP 532742	
MA 5 DP 532742	IS 8 DP 532742	ob13	171°14'00"	M		62.87 M		
IS 8 DP 532742	IS I DP 575696	ob7	255°01'40"	M		99.35 M		
IS I DP 575696	MA 5 DP 532742	ob15	44°32'25"	M		123.18 M		
IS I DP 575696	MA 6 DP 532742	ob16	12°29'20"	M		84.22 M		
BN 2 DP 575696	RN 17 DP 532742	ob57	268°39'30"	M		1.95 M		
RN 17 DP 532742	IT III DP 23551	ob21	344°55'00"	A DP 532742	0°00'00"	19.11 A	DP 532742	
IT III DP 23551	IS II FB 2406/94	ob26	344°51'45"	A FB 2406/94	0°00'00"	5.82 A	FB 2406/94	
IS II FB 2406/94	IT 1 DP 532742	ob27	19°10'00"	A DP 532742	0°00'00"	28.90 A	DP 532742	
IS I DP 302096	IT I DP 44279	ob1	196°20'20"	A SO 549169	0°00'00"	279.80 A	SO 549169	
IT I DP 44279	IT 3 DP 467520	ob28	314°49'30"	A DP 467520	0°00'00"	18.655 A	DP 467520	
IT 3 DP 467520	NAIL 4 SO 478901	ob29	301°43'00"	A SO 478901	0°00'00"	9.16 A	SO 478901	
NAIL 4 SO 478901	MN 2 DP 467520	ob31	332°37'40"	A SO 478901	0°00'00"	56.72 A	SO 478901	
MN 2 DP 467520	MA 2 DP 474236	ob32	314°12'00"	A SO 478901	0°00'00"	30.86 A	SO 478901	
MA 2 DP 474236	MN C LT 442337	ob33	315°10'00"	A DP 474236	0°00'00"	13.83 A	DP 474236	
MN C LT 442337	MN B LT 442337	ob34	314°52'00"	A LT 442337	0°00'00"	25.10 A	LT 442337	
MN B LT 442337	NAIL 1 SO 464023	ob35	302°56'00"	A SO 464023	0°00'00"	58.48 A	SO 464023	
NAIL 1 SO 464023	IS II FB 2406/94	ob36	86°43'40"	A SO 464023	0°00'00"	83.55 A	SO 464023	
IT 3 DP 467520	NAIL 1 SO 478901	ob30	42°45'30"	A SO 478901	0°00'00"	163.88 A	SO 478901	
NAIL 1 SO 478901	IR 4 DP 474236	ob37	275°46'00"	A SO 478901	0°00'00"	165.64 A	SO 478901	
IR 4 DP 474236	MN C LT 442337	ob38	193°36'00"	A SO 478901	0°00'00"	51.90 A	SO 478901	
IR 4 DP 474236	IS 2 SO 478901	ob39	135°40'00"	A SO 478901	0°00'00"	47.37 A	SO 478901	
IS 2 SO 478901	IS 3 SO 478901	ob41	169°49'00"	A SO 478901	0°00'00"	32.49 A	SO 478901	

# Mark and Vector

Survey Number DP 575696

Meridional Circuit Mount Pleasant 2000

From	To	Code	Bearing	Adpt Surv	Bearing Correction	Distance	Adpt Surv	Class
IS 3 SO 478901	NAIL 4 SO 478901	ob42	174°03'00"	A SO 478901	0°00'00"	66.64 A	SO 478901	
IS I DP 575696	DISK 1A SO 478901	ob17	180°30'00"	M		11.84 M		
DISK 1A SO 478901	IS 2 SO 478901	ob43	1°56'00"	A SO 478901	0°00'00"	21.15 A	SO 478901	
IS I DP 575696	PEG (1) DP 47571	ob18	236°45'00"	M		8.66 M		
PEG (1) DP 47571	IS 2 SO 478901	ob45	29°13'00"	A SO 478901	0°00'00"	16.09 A	SO 478901	
DISK 1A SO 478901	PEG (1) DP 47571	ob44	314°49'30"	A SO 478901	0°00'00"	10.06 A	SO 478901	Class A
PEG (1) DP 47571	PEG (2) DP 47571	ob46	313°07'25"	A DP 47571	0°00'25"	3.32 A	DP 47571	Class A
PEG (2) DP 47571	DISK B DP 575696	ob48	313°36'00"	C		8.85 C		Class A
DISK B DP 575696	DISK C DP 575696	ob50	359°05'15"	A DP 5880	-0°00'15"	19.30 A	DP 5880	Class A
DISK C DP 575696	PEG 1D SO 478901	ob51	89°48'50"	A SO 478901	0°00'00"	9.05 A	SO 478901	Class A
PEG 1D SO 478901	IR 4 DP 474236	ob52	308°47'00"	A SO 478901	0°00'00"	32.29 A	SO 478901	
PEG 1D SO 478901	PEG 1C SO 478901	ob53	89°48'50"	A DP 653	-0°00'15"	11.32 A	DP 653	Class A
PEG 1C SO 478901	DISK 1B SO 478901	ob54	179°48'50"	A SO 478901	0°00'00"	30.62 A	SO 478901	Class A
DISK 1B SO 478901	DISK 1A SO 478901	ob55	224°48'50"	A SO 478901	0°00'00"	5.93 A	SO 478901	Class A
PEG (1) DP 47571	DISK A DP 575696	ob47	359°48'50"	A DP 653	-0°00'15"	4.67 C		
DISK A DP 575696	PEG 1D SO 478901	ob56	359°48'50"	A DP 653	-0°00'15"	23.03 C		Class A
PEG (2) DP 47571	DISK A DP 575696	ob49	45°06'00"	C		3.40 C		Class A
IS I DP 575696	PEG (2) DP 47571	ob19	255°35'30"	M		9.97 M		
IS I DP 575696	DISK A DP 575696	ob20	269°23'00"	M		7.26 M		
IR 4 DP 474236	PEG 1C SO 478901	ob40	118°57'00"	A SO 478901	0°00'00"	41.70 A	SO 478901	
IS 8 DP 532742	NAIL 1 SO 478901	ob9	88°36'30"	M		36.34 M		
IS 8 DP 532742	BN 2 DP 575696	ob8	268°39'30"	M		115.72 M		
BN 2 DP 575696	DISK B DP 575696	ob58	169°20'00"	M		19.68 M		
BN 2 DP 575696	DISK C DP 575696	ob59	90°50'00"	M		3.34 M		

# Mark and Vector

Survey Number DP 575696

Meridional Circuit Mount Pleasant 2000

From	To	Code	Bearing	Adpt Surv	Bearing Correction	Distance	Adpt Surv	Class
BN 2 DP 575696	PEG 1D SO 478901	ob60	90°06'00" M			12.39 M		
BN 2 DP 575696	PEG 1C SO 478901	ob61	89°58'00" M			23.70 M		
RN 17 DP 532742	RN III FB 2406/94	ob22	78°11'00" M			120.48 M		
RN 17 DP 532742	MA 6 DP 532742	ob23	33°54'40" M			71.48 M		
RN 17 DP 532742	MA 5 DP 532742	ob24	59°01'20" M			126.05 M		
RN 17 DP 532742	MA 7 DP 532742	ob25	65°02'00" M			7.85 M		
BN 2 DP 575696	MA 7 DP 532742	ob62	57°40'00" M			6.12 M		
BN 2 DP 575696	MA 6 DP 532742	ob63	32°36'50" M			70.37 M		
BN 2 DP 575696	MA 5 DP 532742	ob64	58°34'30" M			124.36 M		
BN 2 DP 575696	RN III FB 2406/94	ob65	78°00'40" M			118.57 M		

Mark Name	Mark Condition	Description
BN 2 DP 575696		In Seal
DISK B DP 575696		In Seal
DISK C DP 575696		In Seal
IR 4 DP 474236		d0.3
IS 3 SO 478901		0.25d
IS 8 DP 532742		FL in FP
IS I DP 302096		20mm Iron spike in seal.
IS I DP 575696		0.25d
IS I LT 559897		Flush
IS II FB 2406/94		Flush
IT 1 DP 532742		0.2d
MA 2 DP 474236		fl. in top of kerb
MA 5 DP 532742		FL in TK
MA 6 DP 532742		FL in TK
MA 7 DP 532742		FL in TK
MN 2 DP 467520		Fl in concrete pad
MN B LT 442337		Flush in top of kerb
MN C LT 442337		Flush in top of kerb
NAIL 1 SO 478901		fl.
NAIL 4 SO 478901		fl. edge of tiles on footpath
RN 17 DP 532742		RN I FB 2406/94 disturbed



# Mark and Vector

Survey Number DP 575696  
Meridional Circuit Mount Pleasant 2000

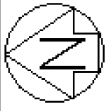
Mark Name	Mark Condition	Description
RN III FB 2406/94		Flush in fender
IS 2 SO 478901	Destroyed	0.25d

\*\*\* End of Report \*\*\*

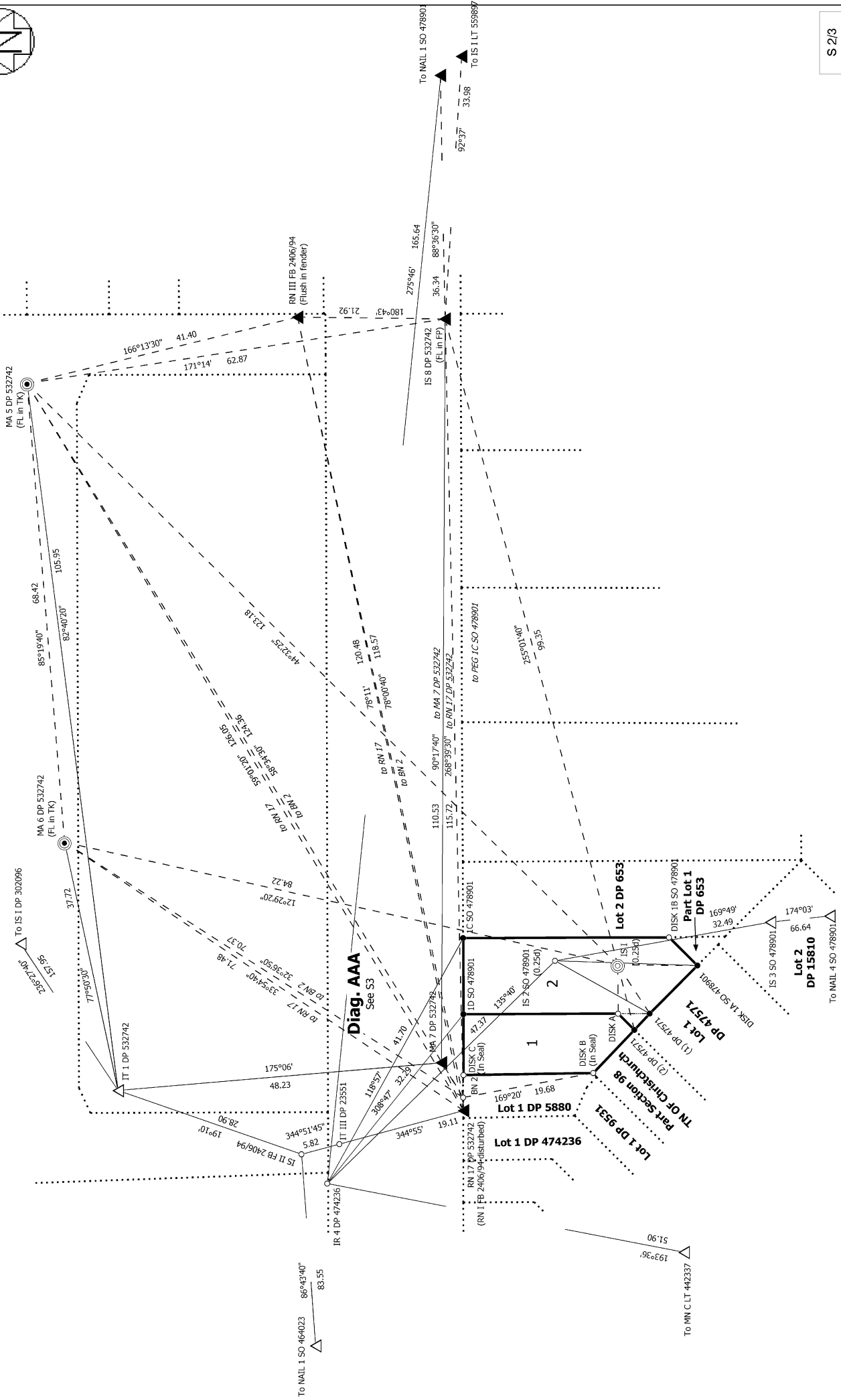








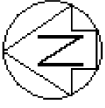
Diag. AA



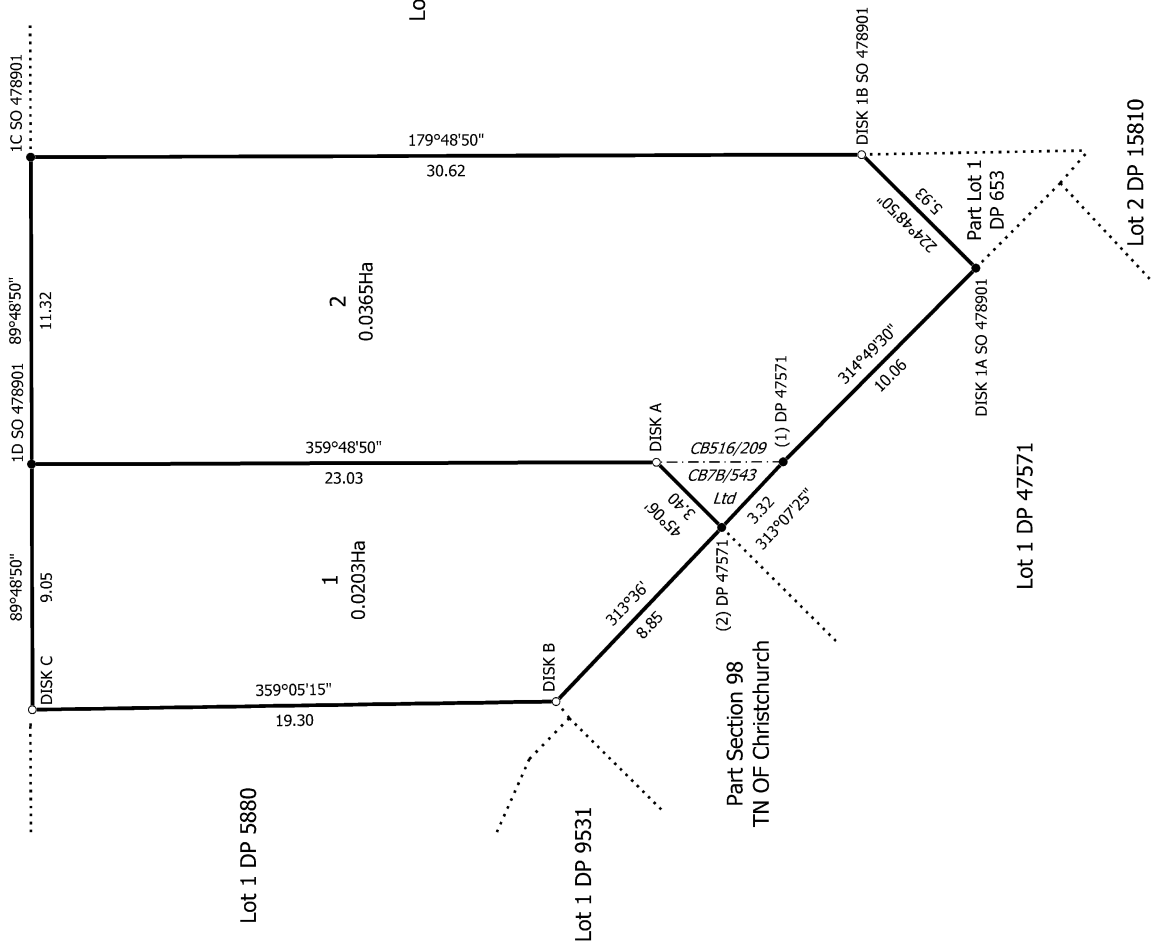
S 2/3

<p>Land District: Canterbury</p> <p><b>Digitally Generated Plan</b></p> <p>Generated on: 18/10/2022 09:25am Page 9 of 11</p>	<p><b>Lots 1 &amp; 2 Being a Subdivision of Part Section 97 TN of Christchurch &amp; Part Lot 1 DP 653</b></p>	<p>Surveyor: Stuart William Greer          Firm: Graham Surveying Limited          Date of Survey: 13/04/2022</p>	<p>Record of Survey          DP 575696          Deposited on: 12/07/2022</p>
--	--	---	--





Salisbury Street  
(Legal)



T 1/1

Land District: Canterbury

**Digitally Generated Plan**

Generated on: 18/10/2022 09:25am | Page 11 of 11

**Lots 1 & 2 Being a Subdivision of Part Section 97 TN of Christchurch & Part Lot 1 DP 653**

Surveyor: Stuart William Greer  
Firm: Graham Surveying Limited  
Date of Survey: 13/04/2022

Record of Survey  
DP 575696

Deposited on: 12/07/2022