



Record of Survey - DP 575805

Survey Number DP 575805
Surveyor Reference M-210506 Mitchell
Surveyor Alan Leonard Doy
Survey Firm McKinlay Surveyors 2010 Limited (New Plymouth)
Surveyor Declaration I Alan Leonard Doy, being a licensed cadastral surveyor, certify that--
(a) this dataset provided by me and its related survey are accurate, correct and in accordance with the Cadastral Survey Act 2002 and Cadastral Survey Rules 2021; and
(b) the survey was undertaken by me or under my personal direction.
Declared on 26 Oct 2022 03:51 PM

Survey Details

Dataset Description LOTS 1 AND 2 BEING A SUBDIVISION OF SUBDIVISION 16 AND 17 SECTION 1 OHAWA TOWN BELT
Purpose LT Subdivision
Status Deposited
Land District Taranaki
Meridional Circuit Taranaki 2000
Type Survey
Survey Class Class A
Vertical Datum None

Survey Dates

Surveyed Date 17/06/2022
Submitted Date 26/10/2022 15:51:45
Deposit Date 05/10/2022
Certified Date 26/10/2022
Survey Approval Date 27/10/2022

Referenced Surveys

Survey Number	Land District	Bearing Correction
SO 5654	Taranaki	0°01'10"
SO 10627	Taranaki	0°01'10"
DP 449787	Taranaki	0°00'00"
DP 351166	Taranaki	0°00'00"

Territorial Authorities

South Taranaki District

Comprised In

RT TNG4/769

Created Parcels

Parcels	Parcel Intent	Area	RT Reference
Lot 1 Deposited Plan 575805	Fee Simple Title	0.0984 Ha	1071657
Lot 2 Deposited Plan 575805	Fee Simple Title	0.0861 Ha	1071658
Area A Deposited Plan 575805	Easement		
Area B Deposited Plan 575805	Easement		
Esplanade Strip C Deposited Plan 575805	Esplanade Strip		
Esplanade Strip D Deposited Plan 575805	Esplanade Strip		



Record of Survey - DP 575805

Created Parcels

Parcels	Parcel Intent	Area	RT Reference
	Erosion		
Total Area		<hr/> 0.1845 Ha	

Mark and Vector

Survey Number DP 575805
 Meridional Circuit Taranaki 2000

From	To	Code	Bearing	Adpt Surv	Bearing Correction	Distance	Adpt Surv	Class
IT 6 SO 5654	IT 1 DP 575805	ob24	314°08'10"	M		44.21 M		
IT 1 DP 575805	IT 5 SO 5654	ob15	314°08'10"	M		14.93 M		
IT 5 SO 5654	IT I SO 10627	ob1	342°15'10"	A SO 10627	0°01'10"	158.35 A SO 10627		
IT 6 SO 5654	IT 1 SO 5654	ob25	224°09'10"	M		100.59 M		
IT I SO 10627	IS III DP 449787	ob0	149°26'30"	A DP 449787	0°00'00"	44.32 A DP 449787		
IS III DP 449787	PEG A DP 449787	ob27	36°29'00"	A DP 449787	0°00'00"	4.34 A DP 449787		
PEG A DP 449787	PEG (8) SO 5654	ob2	161°25'25"	A SO 5654	0°01'10"	4.00 A DP 449787		
PEG (8) SO 5654	PEG (7) SO 5654	ob3	161°25'25"	A SO 5654	0°01'10"	20.12 A SO 5654		
PEG (7) SO 5654	PEG (6) SO 5654	ob4	161°25'25"	A SO 5654	0°01'10"	20.12 A SO 5654		
PEG (6) SO 5654	PEG (5) SO 5654	ob5	161°25'25"	A SO 5654	0°01'10"	20.12 A SO 5654		
PEG (5) SO 5654	PEG (4) SO 5654	ob6	161°25'25"	A SO 5654	0°01'10"	20.12 A SO 5654		
PEG (4) SO 5654	PEG 3 DP 575805	ob7	161°25'25"	A SO 5654	0°01'10"	29.32 A SO 5654		Class A
PEG 3 DP 575805	IT 5 SO 5654	ob8	57°47'10"	M		15.52 M		
IT 6 SO 5654	PEG XV SO 5654	ob26	160°43'10"	A SO 5654	0°01'10"	11.25 A SO 5654		
PEG XV SO 5654	PEG XIV SO 5654	ob10	44°09'10"	A SO 5654	0°01'10"	20.12 A SO 5654		
PEG XIV SO 5654	PEG LXXXI SO 5654	ob11	314°09'10"	A SO 5654	0°01'10"	20.12 A SO 5654		
PEG LXXXI SO 5654	PEG LXXX SO 5654	ob12	314°09'10"	A SO 5654	0°01'10"	25.15 A SO 5654		
PEG LXXX SO 5654	UNMK 12 DP 575805	ob13	314°09'10"	A SO 5654	0°01'10"	2.52 C		Class A
UNMK 12 DP 575805	UNMK 13 DP 575805	ob41	314°09'10"	A SO 5654	0°01'10"	16.46 C		Class A
UNMK 13 DP 575805	PEG 3 DP 575805	ob38	314°09'10"	A SO 5654	0°01'10"	1.29 C		Class A
IT 1 DP 575805	IB 2 DP 575805	ob16	41°34'40"	M		35.40 M		
IB 2 DP 575805	IT 5 SO 5654	ob17	244°48'40"	M		37.81 M		
PEG LXXX SO 5654	PEG CXI SO 5654	ob14	44°09'10"	A SO 5654	0°01'10"	38.86 A SO 5654		Class A
PEG CXI SO 5654	PEG CX SO 5654	ob28	325°33'10"	A SO 5654	0°01'10"	20.68 A SO 5654		
PEG CX SO 5654	PEG CIX SO 5654	ob30	325°33'10"	A SO 5654	0°01'10"	10.02 A SO 5654		
PEG CIX SO 5654	UNMK 14 DP 575805	ob32	251°25'25"	A SO 5654	0°01'10"	1.93 C		Class AD
UNMK 14 DP 575805	PEG (4) SO 5654	ob46	251°25'25"	A SO 5654	0°01'10"	33.50 C		Class AD
UNMK 11 DP 575805	UNMK (1) SO 5654	ob47	44°09'10"	A SO 5654	0°01'10"	12.52 C		Class AD

Mark and Vector

Survey Number DP 575805

Meridional Circuit Taranaki 2000

From	To	Code	Bearing	Adpt Surv	Bearing Correction	Distance	Adpt Surv	Class
PEG 3 DP 575805	UNMK 4 DP 575805	ob9	44°09'10"	A SO 5654	0°01'10"	7.33 C		Class A
UNMK 4 DP 575805	PEG 5 DP 575805	ob40	44°09'10"	A SO 5654	0°01'10"	15.86 C		Class A
PEG 5 DP 575805	UNMK 6 DP 575805	ob21	114°23'00"	C		2.10 C		Class A
UNMK 6 DP 575805	PEG 7 DP 575805	ob43	114°23'00"	C		5.99 C		Class A
PEG 7 DP 575805	PEG 8 DP 575805	ob22	44°09'10"	C		14.77 C		Class A
PEG 8 DP 575805	UNMK 9 DP 575805	ob23	44°09'10"	C		0.20 C		Class AD
UNMK 9 DP 575805	UNMK 10 DP 575805	ob45	44°09'10"	C		11.30 C		Class AD
UNMK 10 DP 575805	UNMK (1) SO 5654	ob35	113°29'00"	C		13.53 C		
PEG CIX SO 5654	UNMK 15 DP 575805	ob33	71°25'25"	A SO 5654	0°01'10"	8.50 C		Class AD
UNMK 15 DP 575805	UNMK (3) SO 5654	ob37	71°25'25"	A SO 5654	0°01'10"	1.96 C		Class AD
IB 2 DP 575805	PEG 5 DP 575805	ob18	330°45'00"	M		10.12 M		
IB 2 DP 575805	PEG 7 DP 575805	ob19	23°56'00"	M		6.00 M		
IB 2 DP 575805	PEG 8 DP 575805	ob20	38°21'00"	M		20.51 M		
PEG CX SO 5654	UNMK (2) SO 5654	ob31	44°09'10"	A SO 5654	0°01'10"	10.06 A SO 5654		
UNMK 6 DP 575805	PEG LXXX SO 5654	ob44	186°43'00"	C		30.10 C		Class A
UNMK 12 DP 575805	PEG 5 DP 575805	ob42	6°43'00"	C		29.20 C		Class A
UNMK 13 DP 575805	UNMK 4 DP 575805	ob39	34°10'00"	C		7.44 C		Class A
PEG CXI SO 5654	UNMK 11 DP 575805	ob29	44°09'10"	A SO 5654	0°01'10"	5.59 C		Class AD
UNMK (3) SO 5654	UNMK (2) SO 5654	ob36	147°45'00"	C		5.18 C		
UNMK (2) SO 5654	UNMK 10 DP 575805	ob34	140°14'00"	C		7.66 C		

Mark Name	Mark Condition	Description
IB 2 DP 575805		d. 0.25
IT 1 SO 5654		d. 0.3 in berm
IT 5 SO 5654		d. 0.4 in drive
IT 6 SO 5654		d. 0.4 in seal



Mark and Vector

Survey Number DP 575805
Meridional Circuit Taranaki 2000

Mark Name	Mark Condition	Description
IT I SO 10627	Searched For and Not Found	

***** End of Report *****



Land Registration District

TARANAKI

Plan Number

DP 575805

Territorial Authority

SOUTH TARANAKI DISTRICT

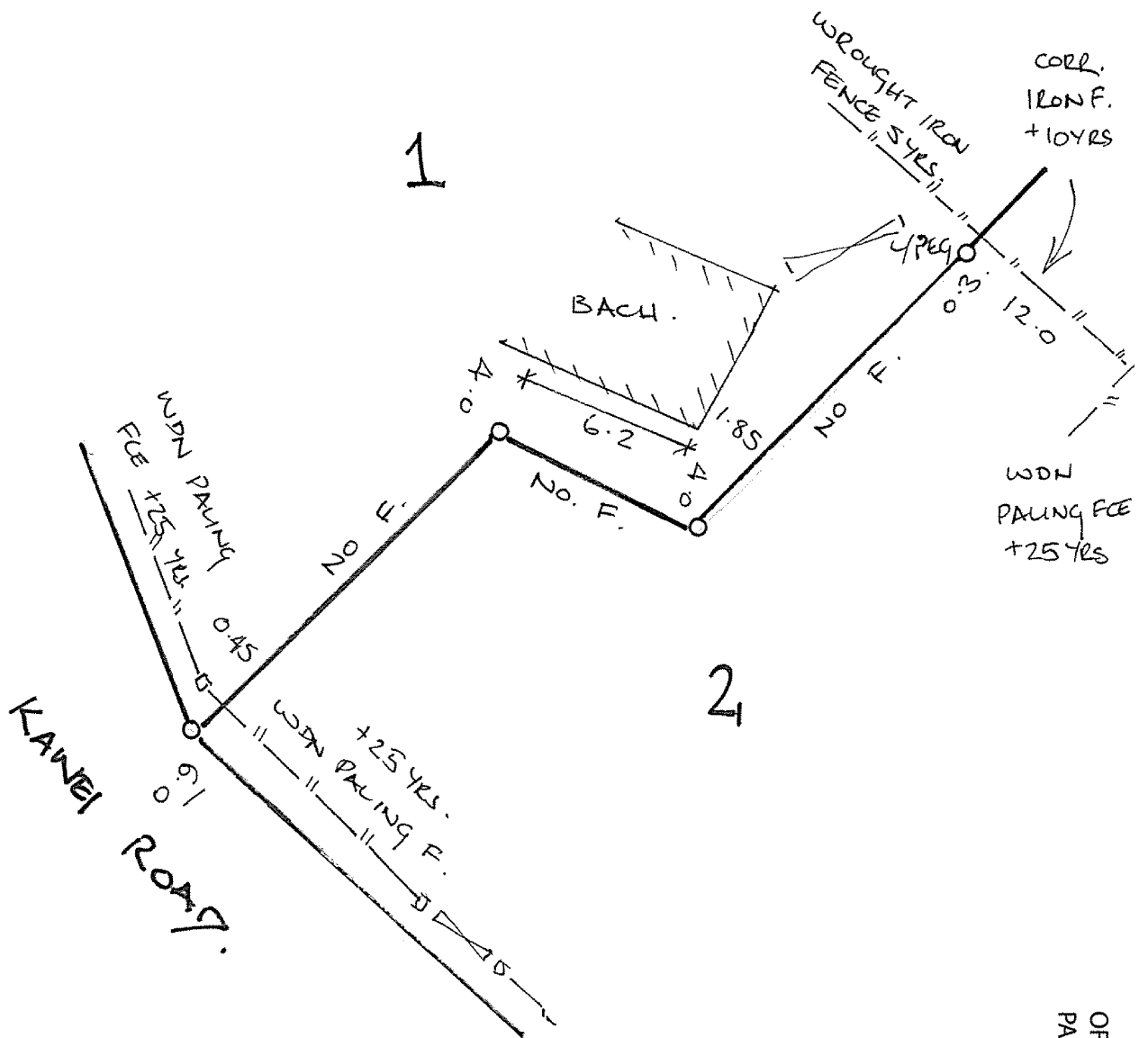
SCHEDULE OF PROPOSED EASEMENTS

Purpose	Shown	Servient Tenement (Burdened Land)	Dominant Tenement (Benefited Land)
Right to convey electricity	A	Lot 2 DP 575805	Lot 1 DP 575805
Right to convey telecommunications	B	Lot 2 DP 575805	Lot 1 DP 575805

Occupation Diagram



FB NO.		JOB NO.	
SURVEYOR'S PAGE	SURVEYOR	DATE	M-210506
2	_____	05/09/22	PLAN NO. DP 575805

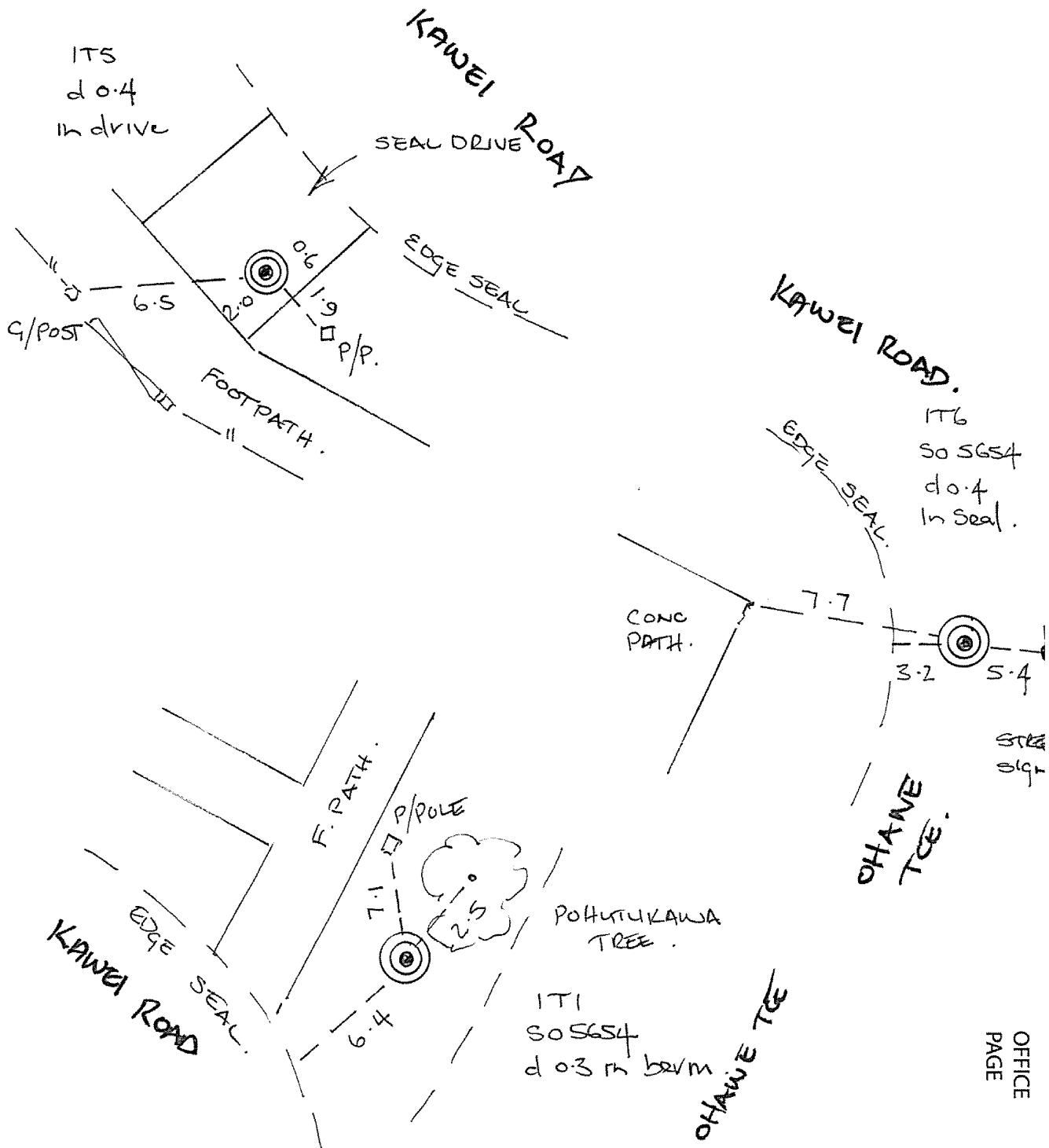


OFFICE
PAGE

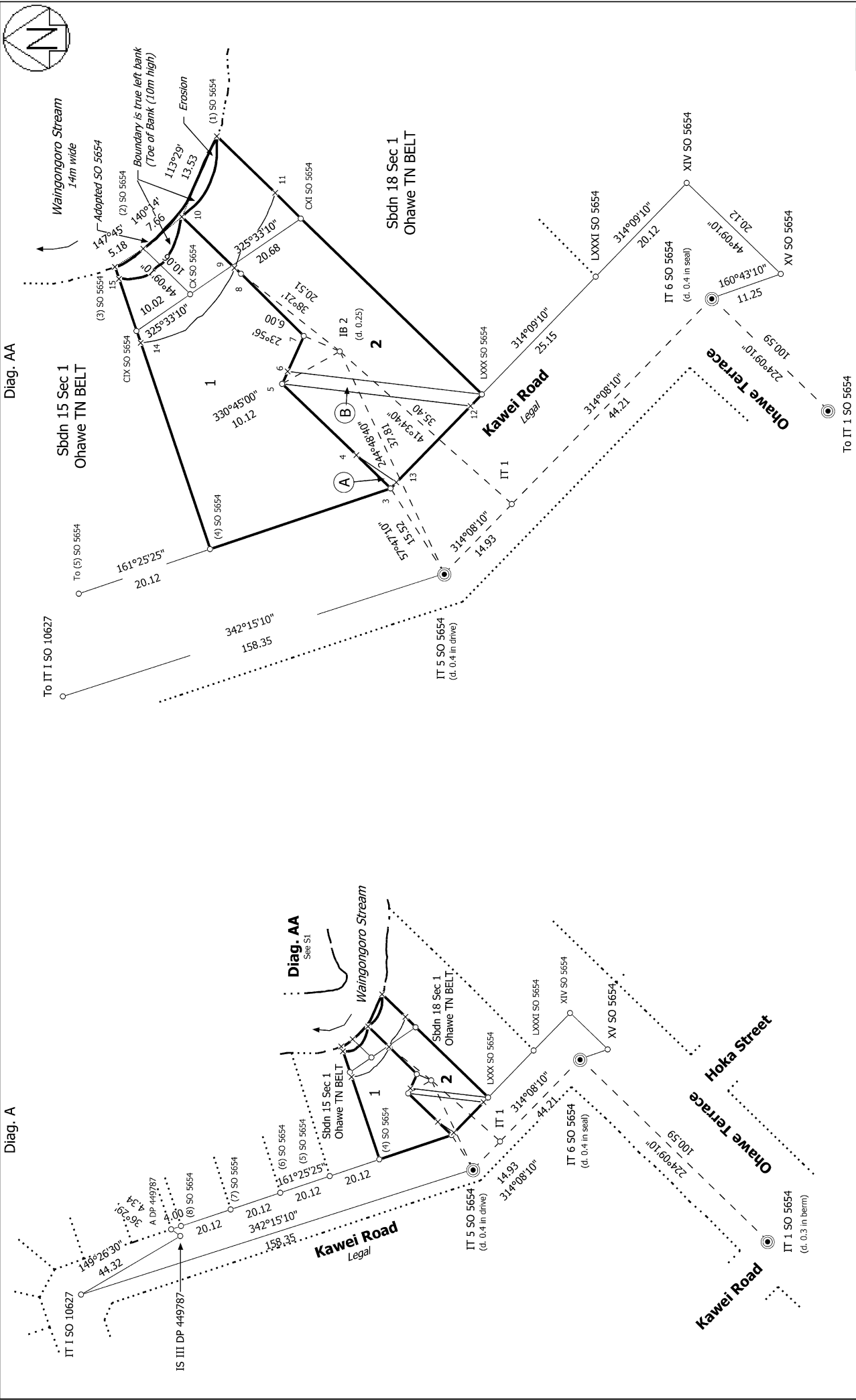
Occupation Diagram



SURVEYOR'S PAGE		SURVEYOR		DATE		JOB NO.	
1		a/llj.		05/09/22		M-210506	
						PLAN NO. DP575805	



OFFICE PAGE

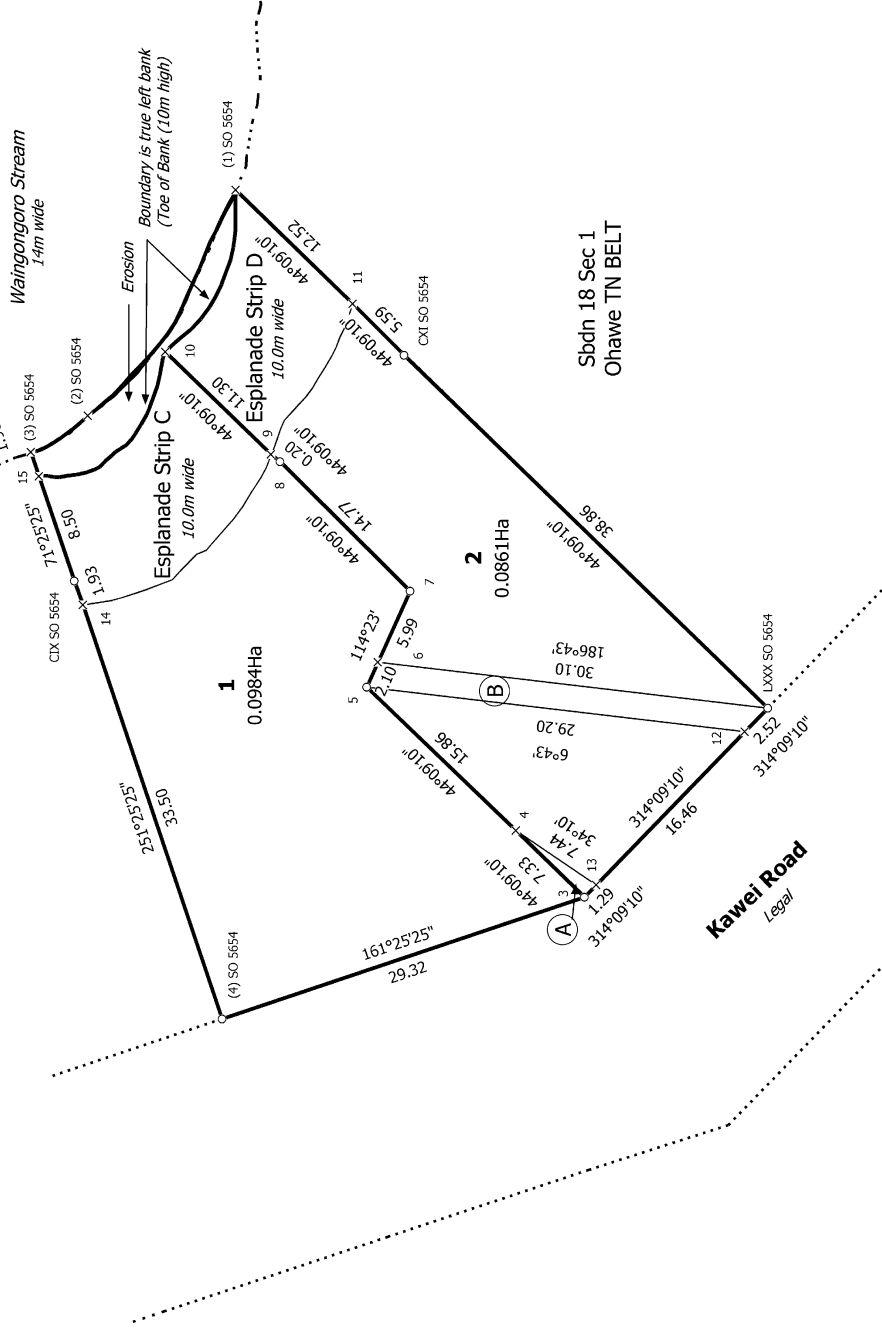


S 1/1	Record of Survey DP 575805
Surveyor: Alan Leonard Doy Firm: McKinlay Surveyors 2010 Limited (Nz) Date of Survey: 17/06/2022	Deposited on: 5/10/2022
LOTS 1 AND 2 BEING A SUBDIVISION OF SUBDIVISION 16 AND 17 SECTION 1 OHAWA TOWN BELT	
Land District: Taranaki	Digitally Generated Plan Generated on: 23/11/2022 06:06am Page 9 of 10

Diag. A



Sbdn 15 Sec 1
Ohawe TN BELT



Lots 1 and 2 are subject to Land Covenant

T 1/1

Land District: Taranaki

Digitally Generated Plan

Generated on: 23/11/2022 06:06am | Page 10 of 10

**LOTS 1 AND 2 BEING A SUBDIVISION OF SUBDIVISION 16 AND 17
SECTION 1 OHAWA TOWN BELT**

Surveyor: Alan Leonard Doy
Firm: McKinlay Surveyors 2010 Limited (NZ)
Date of Survey: 17/06/2022

Record of Survey
DP 575805
Deposited on: 5/10/2022