



Record of Survey - DP 576279

Survey Number DP 576279
Surveyor Reference 7821 Yorke
Surveyor Anna Louise Thomas
Survey Firm Bonisch Consultants Ltd
Surveyor Declaration I Anna Louise Thomas, being a licensed cadastral surveyor, certify that--
(a) this dataset provided by me and its related survey are accurate, correct and in accordance with the Cadastral Survey Act 2002 and Cadastral Survey Rules 2021; and
(b) the survey was undertaken by me or under my personal direction.
Declared on 21 Jun 2022 03:39 PM

Survey Details

Dataset Description Lots 1 and 2 being subdivision of Section 13 Block III Otara SD
Purpose LT Subdivision
Status Deposited **Type** Survey
Land District Southland **Survey Class** Class B
Meridional Circuit North Taieri OCD **Vertical Datum** None

Survey Dates

Surveyed Date 28/04/2022 **Certified Date** 21/06/2022
Submitted Date 21/06/2022 15:39:48 **Survey Approval Date** 22/06/2022
Deposit Date 02/06/2022

Referenced Surveys

| Survey Number | Land District | Bearing Correction |
|---------------|---------------|--------------------|
| DP 6195 | Southland | 0°00'00" |
| SO 2001 | Southland | 0°00'00" |
| DP 231 | Southland | 0°00'00" |
| SO 1038 | Southland | 0°00'00" |
| DP 570011 | Southland | 0°00'00" |

Territorial Authorities

Southland District

Comprised In

RT SL9B/770

Created Parcels

| Parcels | Parcel Intent | Area | RT Reference |
|-----------------------------|------------------|-------------------|--------------|
| Lot 1 Deposited Plan 576279 | Fee Simple Title | 31.8320 Ha | 1060007 |
| Lot 2 Deposited Plan 576279 | Fee Simple Title | 26.9710 Ha | 1060008 |
| Total Area | | 58.8030 Ha | |

Mark and Vector

Survey Number DP 576279

Meridional Circuit North Taieri OCD

| From | To | Code | Bearing | Adpt Surv | Bearing Correction | Distance | Adpt Surv | Class |
|-------------------|-------------------|------|------------|-------------|--------------------|----------|-----------|----------|
| PEG (14) SO 2001 | PEG (4) SO 2001 | ob0 | 92°07'00" | A SO 2001 | 0°00'00" | 64.13 A | SO 2001 | Class B |
| PEG (4) SO 2001 | PEG IIIa DP 6195 | ob2 | 81°36'00" | A DP 6195 | 0°00'00" | 148.76 A | DP 6195 | Class B |
| PEG IIIa DP 6195 | PEG XXIa DP 6195 | ob3 | 180°00'00" | A DP 6195 | 0°00'00" | 864.66 A | DP 6195 | Class B |
| PEG XXIa DP 6195 | PEG (5) SO 2001 | ob4 | 267°38'00" | A SO 2001 | 0°00'00" | 144.28 A | SO 2001 | Class B |
| PEG (5) SO 2001 | PEG (6) SO 2001 | ob5 | 231°36'00" | A SO 2001 | 0°00'00" | 22.33 A | SO 2001 | Class B |
| PEG (6) SO 2001 | PEG (7) SO 2001 | ob6 | 296°44'00" | A SO 2001 | 0°00'00" | 118.31 A | SO 2001 | Class B |
| PEG (7) SO 2001 | PEG (3) SO 2001 | ob8 | 317°25'00" | A SO 2001 | 0°00'00" | 121.71 A | SO 2001 | Class B |
| PEG (3) SO 2001 | PEG (8) SO 2001 | ob9 | 332°09'00" | A SO 2001 | 0°00'00" | 217.38 A | SO 2001 | Class B |
| PEG (8) SO 2001 | PEG (9) SO 2001 | ob10 | 32°00'00" | A SO 2001 | 0°00'00" | 238.64 A | SO 2001 | Class B |
| PEG (9) SO 2001 | PEG (10) SO 2001 | ob11 | 40°12'00" | A SO 2001 | 0°00'00" | 182.16 A | SO 2001 | Class B |
| PEG (10) SO 2001 | PEG (14) SO 2001 | ob12 | 358°50'00" | A SO 2001 | 0°00'00" | 188.66 A | SO 2001 | Class B |
| PEG (14) SO 2001 | PEG (11) SO 2001 | ob1 | 272°07'00" | A SO 2001 | 0°00'00" | 20.16 A | SO 2001 | |
| PEG (6) SO 2001 | PEG (12) SO 2001 | ob7 | 231°36'00" | A SO 2001 | 0°00'00" | 22.17 A | SO 2001 | |
| PEG (11) SO 2001 | PEG 11 SO 2001 | ob13 | 178°50'00" | A SO 2001 | 0°00'00" | 182.22 A | SO 2001 | Class B |
| PEG 11 SO 2001 | PEG 10 SO 2001 | ob16 | 220°12'00" | A SO 2001 | 0°00'00" | 176.02 A | SO 2001 | Class B |
| PEG 10 SO 2001 | PEG 9a SO 2001 | ob17 | 212°00'00" | A SO 2001 | 0°00'00" | 251.66 A | SO 2001 | Class B |
| PEG 9a SO 2001 | PEG 8 SO 2001 | ob18 | 152°09'00" | A SO 2001 | 0°00'00" | 231.54 A | SO 2001 | Class B |
| PEG 8 SO 2001 | PEG 7a SO 2001 | ob20 | 137°25'00" | A SO 2001 | 0°00'00" | 127.94 A | SO 2001 | Class B |
| PEG 7a SO 2001 | PEG (12) SO 2001 | ob21 | 116°44'00" | A SO 2001 | 0°00'00" | 112.65 A | SO 2001 | Class B |
| PEG (11) SO 2001 | PEG (13) SO 2001 | ob14 | 272°07'00" | A SO 2001 | 0°00'00" | 201.97 A | SO 2001 | Class B |
| PEG (13) SO 2001 | PEG 19h SO 2001 | ob25 | 286°06'00" | A SO 2001 | 0°00'00" | 247.28 A | SO 2001 | Class B |
| PEG 19h SO 2001 | UNMK (21) SO 2001 | ob26 | 340°47'00" | A SO 2001 | 0°00'00" | 84.49 A | SO 2001 | Class BD |
| UNMK (21) SO 2001 | PEG (1) SO 2001 | ob22 | 340°47'00" | A SO 2001 | 0°00'00" | 11.10 A | SO 2001 | |
| UNMK (5) DP 231 | UNMK (4) DP 231 | ob27 | 351°46'15" | A DP 570011 | 0°00'00" | 867.96 A | DP 570011 | |
| UNMK (4) DP 231 | PEG (1) SO 2001 | ob29 | 155°38'00" | A DP 231 | 0°00'00" | 8.27 A | DP 570011 | |
| UNMK (21) SO 2001 | UNMK 1 DP 576279 | ob23 | 227°10'20" | C | | 362.39 C | | |
| UNMK 1 DP 576279 | UNMK 2 DP 576279 | ob32 | 116°56'25" | C | | 318.97 C | | |

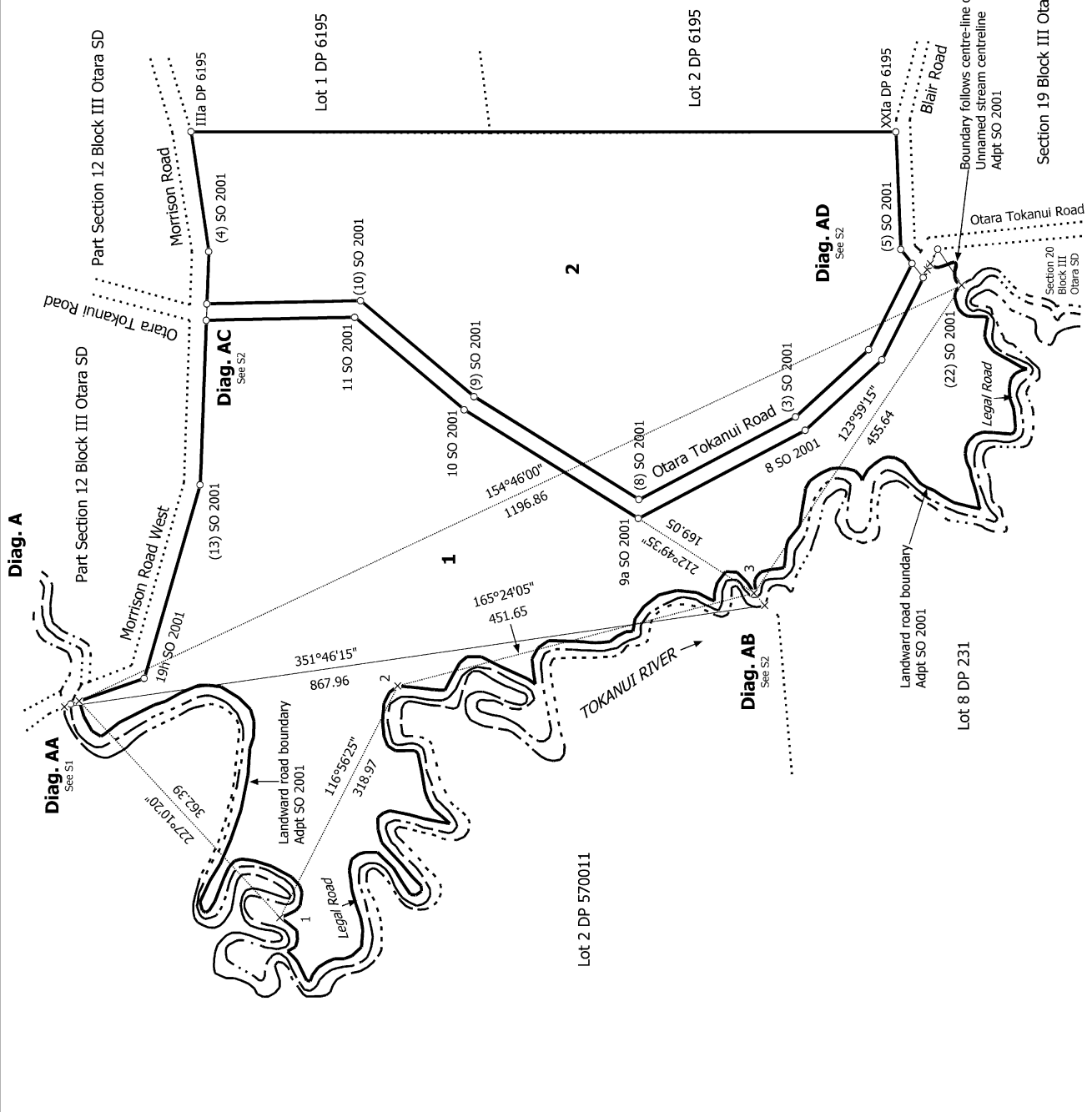
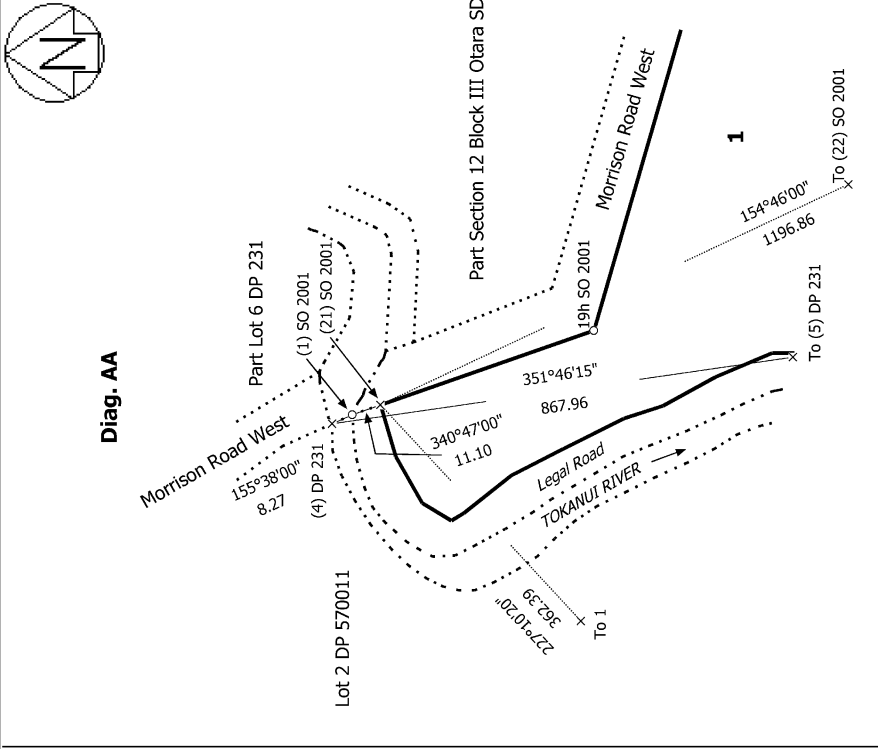
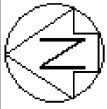
Mark and Vector

Survey Number DP 576279

Meridional Circuit North Taieri OCD

| From | To | Code | Bearing | Adpt Surv | Bearing Correction | Distance | Adpt Surv | Class |
|-------------------|-------------------|------|------------|-----------|--------------------|-----------------|-----------|----------|
| UNMK (5) DP 231 | UNMK 3 DP 576279 | ob28 | 48°59'00" | C | | 19.94 C | | |
| PEG 9a SO 2001 | UNMK 3 DP 576279 | ob19 | 212°49'35" | C | | 169.05 C | | |
| UNMK 2 DP 576279 | UNMK 3 DP 576279 | ob30 | 165°24'05" | C | | 451.65 C | | |
| UNMK 3 DP 576279 | UNMK (22) SO 2001 | ob31 | 123°59'15" | C | | 455.64 C | | |
| UNMK (21) SO 2001 | UNMK (22) SO 2001 | ob24 | 154°46'00" | C | | 1,196.86 C | | |
| PEG (12) SO 2001 | UNMK (23) SO 2001 | ob15 | 116°44'00" | A SO 2001 | 0°00'00" | 11.08 A SO 2001 | | Class B |
| UNMK (23) SO 2001 | PEG (15) SO 2001 | ob33 | 116°44'00" | A SO 2001 | 0°00'00" | 6.22 A SO 2001 | | Class B |
| PEG (15) SO 2001 | UNMK (24) SO 2001 | ob34 | 116°44'00" | A SO 2001 | 0°00'00" | 1.81 A SO 2001 | | Class BD |
| UNMK (24) SO 2001 | PEG 6a SO 2001 | ob35 | 116°44'00" | A SO 2001 | 0°00'00" | 20.12 A SO 2001 | | |
| PEG 6a SO 2001 | UNMK (22) SO 2001 | ob36 | 236°26'00" | A SO 2001 | 0°00'00" | 53.31 A SO 2001 | | |

*** End of Report ***



S 1/2

Record of Survey
DP 576279
Deposited on: 2/06/2022

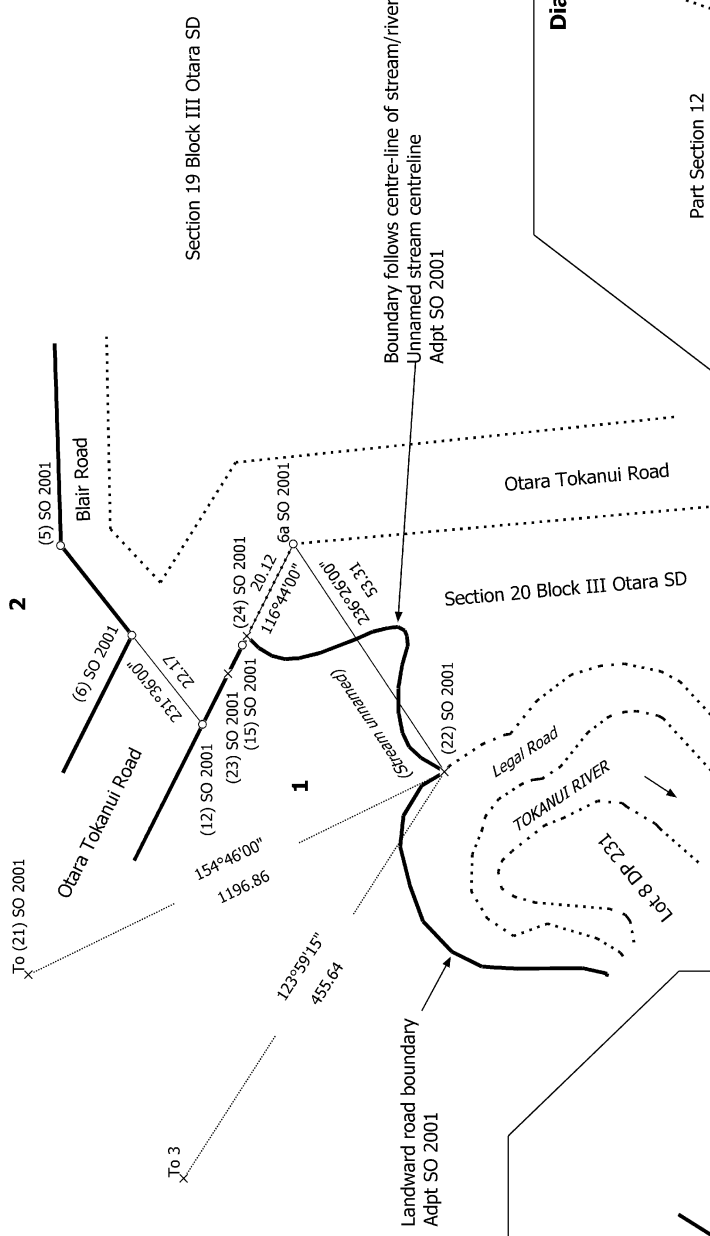
Surveyor: Anna Louise Thomas
Firm: Bonisch Consultants Ltd
Date of Survey: 28/04/2022

Section 19 Block III Otara SD

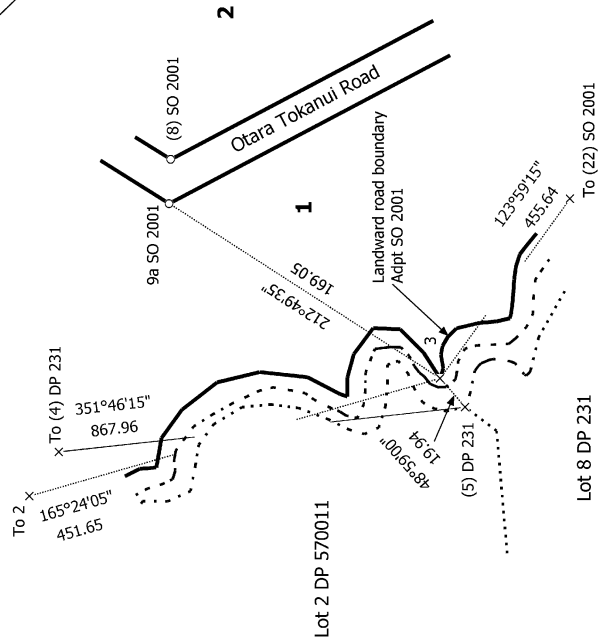
Section 13 Block III Otara SD

Land District: Southland
Digitally Generated Plan
Generated on: 07/07/2022 1:46pm Page 4 of 6

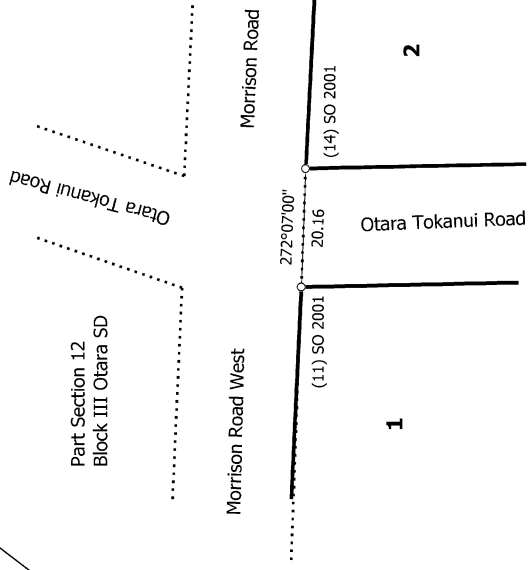
Diag. AD



Diag. AB



Diag. AC



S 2/2

