

Record of Survey - DP 576466

Survey Number DP 576466
Surveyor Reference 12972 - Burrows
Surveyor Timothy Brian Ronke
Survey Firm Grant & Cooke Surveyors Ltd
Surveyor Declaration I Timothy Brian Ronke, being a licensed cadastral surveyor, certify that--
 (a) this dataset provided by me and its related survey are accurate, correct and in accordance with the Cadastral Survey Act 2002 and Cadastral Survey Rules 2021; and
 (b) the survey was undertaken by me or under my personal direction.
 Declared on 20 Dec 2022 04:06 PM

Survey Details

Dataset Description Lots 1-3 being a Subdivision of Lot 2 DP 5026
Purpose LT Subdivision
Status Deposited **Type** Survey
Land District Gisborne **Survey Class** Class A
Meridional Circuit Poverty Bay 2000 **Vertical Datum** None

Survey Dates

Surveyed Date 03/05/2022 **Certified Date** 20/12/2022
Submitted Date 20/12/2022 16:06:33 **Survey Approval Date** 22/12/2022
Deposit Date 21/04/2023

Referenced Surveys

Survey Number	Land District	Bearing Correction
DP 5075	Gisborne	0°00'00"
DP 5008	Gisborne	0°00'00"
DP 5026	Gisborne	0°00'00"
SO 8042	Gisborne	0°00'40"
SO 8043	Gisborne	0°00'40"
SO 8824	Gisborne	0°00'00"

Territorial Authorities

Gisborne District

Comprised In

RT GS134/24

Created Parcels

Parcels	Parcel Intent	Area	RT Reference
Lot 1 Deposited Plan 576466	Fee Simple Title	0.0777 Ha	1061000
Lot 2 Deposited Plan 576466	Fee Simple Title	0.0452 Ha	1061001
Lot 3 Deposited Plan 576466	Vesting on Deposit for Local Purpose Reserve Erosion	0.0036 Ha	1061007
Total Area		0.1265 Ha	

Mark and Vector

Survey Number DP 576466

Meridional Circuit Poverty Bay 2000

From	To	Code	Bearing	Adpt Surv	Bearing Correction	Distance	Adpt Surv	Class
SS 254 No 2 SO 8824	SS 212 SO 8042	ob24	316°58'25"	M		238.69 M		
SS 212 SO 8042	PLUG III SO 6087	ob25	182°27'05"	M		228.84 M		
PLUG III SO 6087	SS 253 SO 8043	ob27	150°29'30"	M		99.75 M		
SS 253 SO 8043	SS 274 No 2 SO 8824	ob28	40°16'45"	M		105.05 M		
SS 274 No 2 SO 8824	NAIL 2 DP 576466	ob30	42°24'44"	M		21.51 M		
NAIL 2 DP 576466	NAIL 1 DP 576466	ob31	42°24'44"	M		49.49 M		
NAIL 1 DP 576466	SS 254 No 2 SO 8824	ob32	42°24'44"	M		11.42 M		
NAIL 1 DP 576466	IT 3 DP 576466	ob33	289°22'30"	M		89.17 M		
IT 3 DP 576466	NAIL 2 DP 576466	ob35	142°30'00"	M		83.35 M		
SS 212 SO 8042	SS 306 SO 8042	ob26	265°55'33"	A	SO 8042	0°00'40"	26.954 A	SO 8042
SS 306 SO 8042	IP II DP 5008	ob9	175°55'09"	A	DP 5026	0°00'00"	135.77 A	DP 5008
IP II DP 5008	SS 304 SO 8042	ob12	175°55'09"	A	SO 8042	0°00'00"	7.14 A	SO 8042
SS 304 SO 8042	IS SO 8043	ob10	169°58'37"	A	SO 8043	0°00'40"	60.18 A	SO 8043
IS SO 8043	SS 253 SO 8043	ob11	157°47'51"	A	SO 8043	0°00'40"	120.68 A	SO 8043
IP II DP 5008	IT III DP 5008	ob13	90°15'50"	A	DP 5075	0°00'00"	42.53 A	DP 5075
IT III DP 5008	IT IV DP 5008	ob14	90°15'50"	A	DP 5075	0°00'00"	66.72 A	DP 5075
IT IV DP 5008	IT V DP 5008	ob17	220°11'50"	A	DP 5075	0°00'00"	61.07 A	DP 5075
IT V DP 5008	IT VI DP 5008	ob19	226°15'00"	A	DP 5075	0°00'00"	45.90 A	DP 5075
IT VI DP 5008	IS VII DP 5008	ob22	226°15'00"	A	DP 5075	0°00'00"	22.59 A	DP 5075
IS VII DP 5008	SS 304 SO 8042	ob23	347°12'50"	A	DP 5075	0°00'00"	89.62 A	DP 5075
IT III DP 5008	PEG (1) DP 5026	ob15	165°03'00"	A	DP 5075	0°00'00"	5.35 A	DP 5075
IT III DP 5008	PEG (2) DP 5026	ob16	134°19'00"	A	DP 5026	0°00'00"	7.03 A	DP 5026
IT IV DP 5008	POST DP 5008	ob18	264°15'00"	A	DP 5008	0°00'00"	8.23 A	DP 5008
IT V DP 5008	UNMK 11 DP 576466	ob20	328°12'00"	A	DP 5026	0°00'00"	0.51 C	Class AD
PEG (3) DP 5026	PEG 10 DP 576466	ob2	328°12'00"	A	DP 5026	0°00'00"	2.37 C	Class A
PEG 10 DP 576466	PEG (4) DP 5026	ob7	328°12'00"	A	DP 5026	0°00'00"	11.05 C	Class A
PEG (4) DP 5026	PEG (1) DP 5026	ob3	328°12'00"	A	DP 5026	0°00'00"	33.52 A	DP 5026
PEG (1) DP 5026	PEG (2) DP 5026	ob0	85°55'40"	A	DP 5026	0°00'00"	3.66 A	DP 5026
PEG (2) DP 5026	PEG 4 DP 576466	ob1	85°55'40"	A	DP 5026	0°00'00"	20.36 C	Class A
PEG 4 DP 576466	POST DP 5008	ob5	85°55'40"	A	DP 5026	0°00'00"	33.27 C	Class AD
SS 253 SO 8043	LP II DP 8772	ob29	42°47'48"	A	SO 8824	0°00'00"	149.485 A	SO 8824

Mark and Vector

Survey Number DP 576466

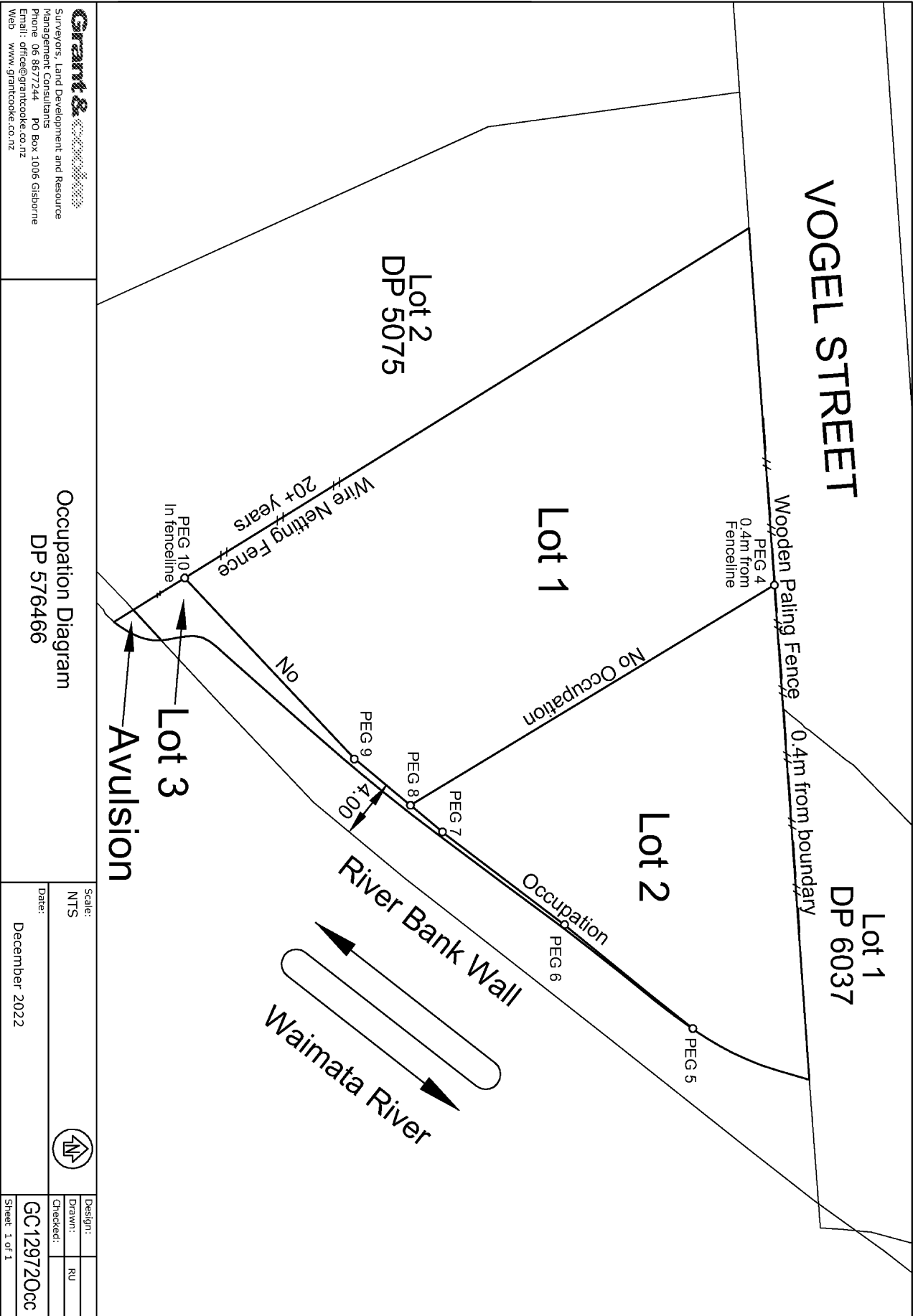
Meridional Circuit Poverty Bay 2000

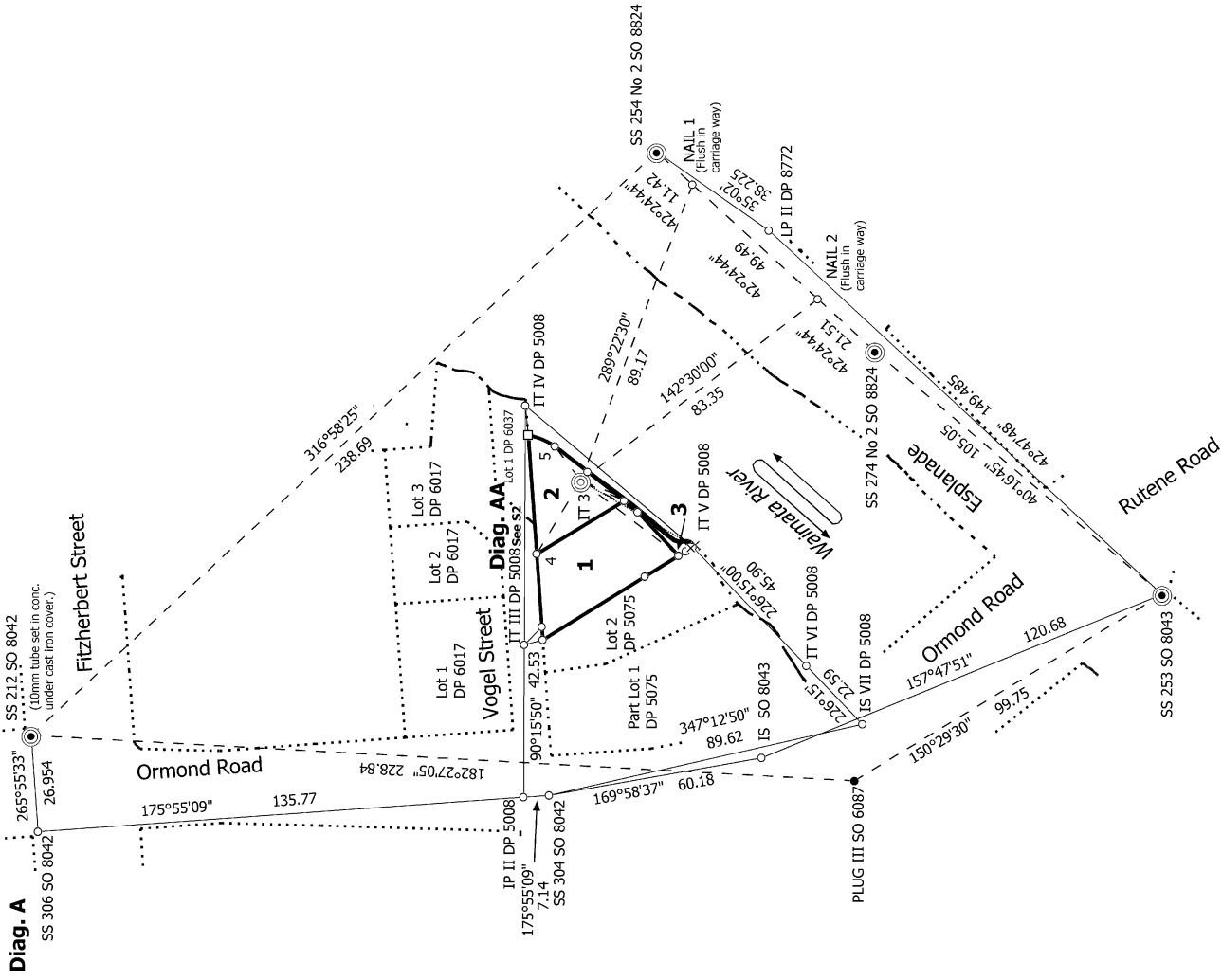
From	To	Code	Bearing	Adpt Surv	Bearing Correction	Distance	Adpt Surv	Class
LP II DP 8772	SS 254 No 2 SO 8824	ob4	35°02'00"	A SO 8824	0°00'00"	38.225 A	SO 8824	
IT V DP 5008	UNMK DP 5008	ob21	148°12'00"	A DP 5008	0°00'00"	1.01 A	DP 5008	Class AD
PEG 4 DP 576466	PEG 8 DP 576466	ob6	148°49'00"	C		28.58 C		Class A
IT 3 DP 576466	PEG 4 DP 576466	ob36	301°06'00"	M		23.82 M		
IT 3 DP 576466	PEG 5 DP 576466	ob37	53°14'00"	M		12.06 M		
IT 3 DP 576466	PEG 6 DP 576466	ob38	126°18'00"	M		3.15 M		
IT 3 DP 576466	PEG 7 DP 576466	ob39	200°54'00"	M		10.68 M		
IT 3 DP 576466	PEG 8 DP 576466	ob40	204°45'00"	M		13.36 M		
IT 3 DP 576466	PEG 9 DP 576466	ob41	208°44'00"	M		18.12 M		
IT 3 DP 576466	PEG 10 DP 576466	ob42	217°26'00"	M		34.33 M		
PEG 10 DP 576466	PEG 9 DP 576466	ob8	46°54'00"	C		16.64 C		Class A
PEG 9 DP 576466	PEG 8 DP 576466	ob46	39°42'00"	C		4.88 C		Class A
PEG 8 DP 576466	PEG 7 DP 576466	ob45	39°36'00"	C		2.80 C		Class A
PEG 7 DP 576466	PEG 6 DP 576466	ob44	38°03'00"	C		10.30 C		Class A
PEG 6 DP 576466	PEG 5 DP 576466	ob43	38°07'00"	C		11.56 C		Class AD
UNMK 11 DP 576466	PEG (3) DP 5026	ob47	328°12'00"	A DP 5026	0°00'00"	1.72 C		Class AD
IT 3 DP 576466	UNMK 12 DP 576466	ob34	210°00'00"	C		33.35 C		

Mark Name	Mark Condition	Description
IS SO 8043		N/A
IT 3 DP 576466		Down 0.3m
NAIL 1 DP 576466		Flush in carriage way
NAIL 2 DP 576466		Flush in carriage way
SS 212 SO 8042		10mm tube set in conc. under cast iron cover.
SS 304 SO 8042		5a

*** End of Report ***

Occupation Diagram





S 1/2

Land District: Gisborne

Digitally Generated Plan

Generated on: 23/05/2023 1:30pm Page 5 of 7

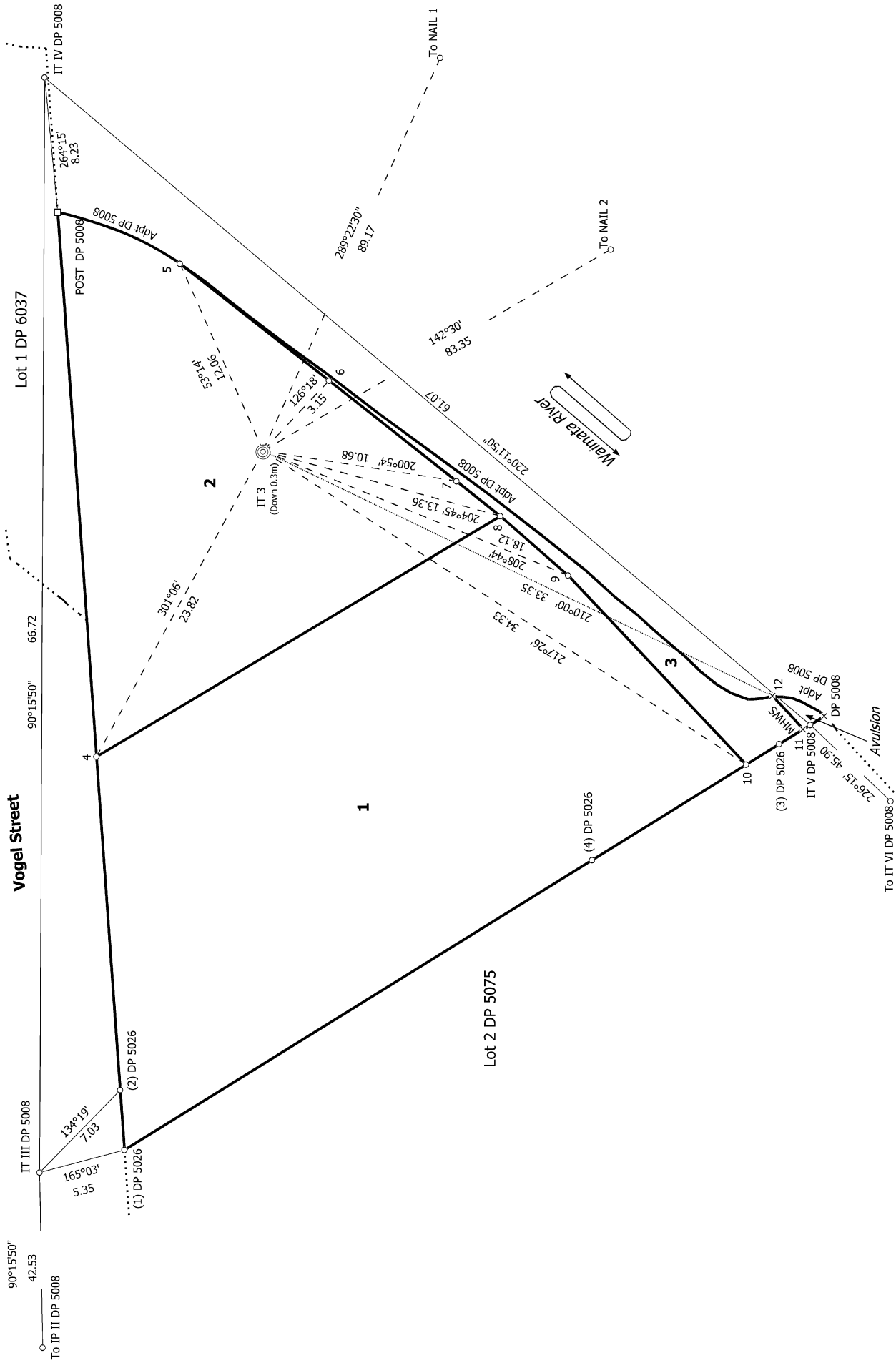
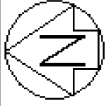
Lots 1-3 being a Subdivision of Lot 2 DP 5026

Surveyor: Timothy Brian Ronke
 Firm: Grant & Cooke Surveyors Ltd
 Date of Survey: 3/05/2022

Record of Survey
 DP 576466

Deposited on: 21/04/2023

Diag. AA



S 2/2

Land District: Gisborne

Digitally Generated Plan

Generated on: 23/05/2023 1:30pm Page 6 of 7

Lots 1-3 being a Subdivision of Lot 2 DP 5026

Surveyor: Timothy Brian Ronke
Firm: Grant & Cooke Surveyors Ltd
Date of Survey: 3/05/2022

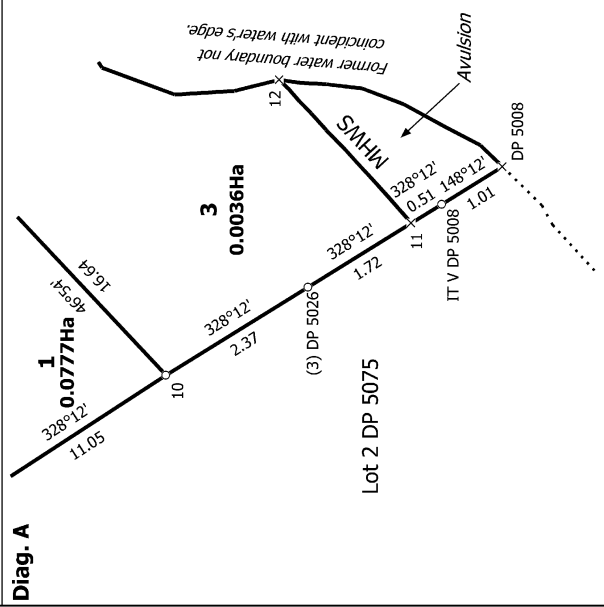
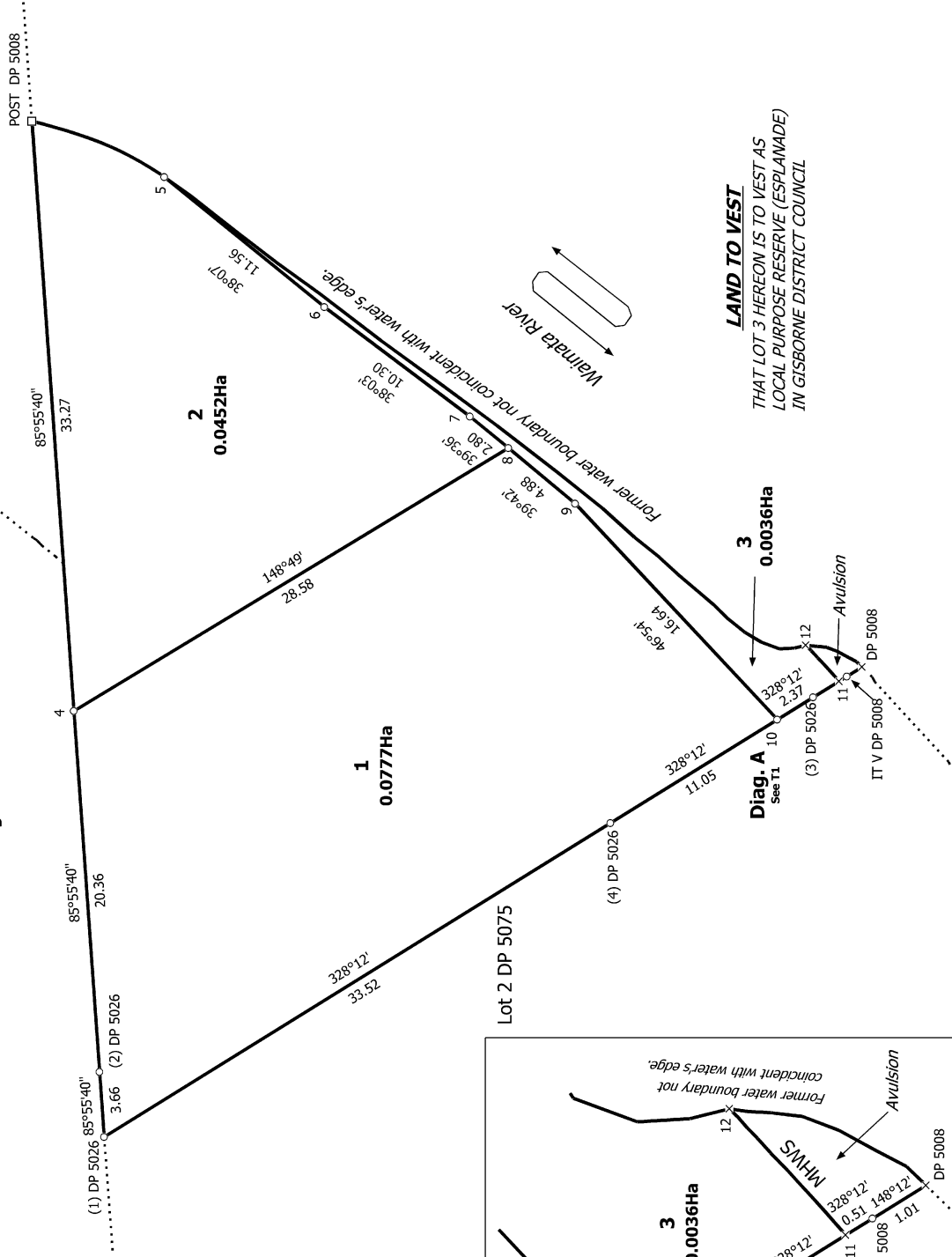
Record of Survey
DP 576466

Deposited on: 21/04/2023



Lot 1 DP 6037

Vogel Street



T 1/1

Land District: Gisborne

Digitally Generated Plan
Generated on: 23/05/2023 1:30pm Page 7 of 7

Lots 1-3 being a Subdivision of Lot 2 DP 5026

Surveyor: Timothy Brian Ronke
Firm: Grant & Cooke Surveyors Ltd
Date of Survey: 3/05/2022

Record of Survey
DP 576466

Deposited on: 21/04/2023