



Record of Survey - DP 577133

Survey Number DP 577133
Surveyor Reference 5727 - 8 Cowper Street, Devonport
Surveyor Richard Stuart Abbott
Survey Firm Survey Worx Ltd
Surveyor Declaration I Richard Stuart Abbott, being a licensed cadastral surveyor, certify that--
(a) this dataset provided by me and its related survey are accurate, correct and in accordance with the Cadastral Survey Act 2002 and Cadastral Survey Rules 2021; and
(b) the survey was undertaken by me or under my personal direction.
Declared on 16 Aug 2022 09:27 AM

Survey Details

Dataset Description Lots 1 & 2 being a Subdivision of Lot 2 DP 104423, Part Lot 103 DP 195 & Part Lot 104 DP 195
Purpose LT Subdivision
Status Deposited **Type** Survey
Land District North Auckland **Survey Class** Class A
Meridional Circuit Mount Eden 2000 **Vertical Datum** None

Survey Dates

Surveyed Date 16/05/2022 **Certified Date** 16/08/2022
Submitted Date 16/08/2022 09:27:22 **Survey Approval Date** 16/08/2022
Deposit Date 01/08/2022

Referenced Surveys

Survey Number	Land District	Bearing Correction
DP 195	North Auckland	0°00'00"
DP 104423	North Auckland	0°00'00"
DP 93112	North Auckland	0°00'00"
DP 202889	North Auckland	0°00'00"
DP 211129	North Auckland	0°00'00"
SO 55174	North Auckland	0°00'00"

Territorial Authorities

Auckland Council

Comprised In

RT NA57C/1437
RT NA1073/153

Created Parcels

Parcels	Parcel Intent	Area	RT Reference
Lot 1 Deposited Plan 577133	Fee Simple Title	0.0471 Ha	1064294
Lot 2 Deposited Plan 577133	Fee Simple Title	0.0585 Ha	1064295
Total Area		0.1056 Ha	

Mark and Vector

Survey Number DP 577133

Meridional Circuit Mount Eden 2000

From	To	Code	Bearing	Adpt Surv	Bearing Correction	Distance	Adpt Surv	Class
IB X SO 49716	IS SO 55174	ob0	252°46'50"	A DP 93112	0°00'00"	96.80	A DP 93112	
IS SO 55174	ALP 3 DP 577133	ob1	244°33'20"	M		93.64	M	
ALP 3 DP 577133	ALP 4 DP 577133	ob2	155°06'20"	M		69.68	M	
ALP 4 DP 577133	MA 5 DP 577133	ob7	152°43'00"	M		43.14	M	
MA 5 DP 577133	MA I DP 202889	ob9	62°32'40"	M		79.03	M	
MA I DP 202889	IT II DP 93112	ob12	63°03'00"	A DP 202889	0°00'00"	94.20	A DP 202889	
IT II DP 93112	IS I DP 93112	ob13	63°03'00"	A DP 93112	0°00'00"	16.77	A DP 93112	
IS I DP 93112	IB X SO 49716	ob14	333°49'40"	A DP 93112	0°00'00"	93.22	A DP 93112	
ALP 3 DP 577133	IS II DP 104423	ob3	87°57'00"	M		34.46	M	
ALP 3 DP 577133	IT 9 DP 577133	ob4	156°21'00"	M		2.20	M	
ALP 3 DP 577133	IT SO 55174	ob5	236°12'00"	M		18.14	M	
ALP 3 DP 577133	IS 12 DP 577133	ob6	243°21'40"	M		106.99	M	
IT SO 55174	IT II SO 55174	ob18	63°12'30"	A SO 55174	0°00'00"	17.91	A SO 55174	
IT II SO 55174	IS SO 55174	ob20	63°12'30"	A SO 55174	0°00'00"	93.70	A SO 55174	
IT II SO 55174	IS II DP 104423	ob21	84°27'00"	A DP 104423	0°00'00"	33.69	A DP 104423	
IT 9 DP 577133	IT II SO 55174	ob17	93°21'00"	C		0.03	C	
IT SO 55174	IS I SO 55174	ob19	244°49'20"	A DP 211129	0°00'00"	89.10	A DP 211129	
IS I SO 55174	IS 12 DP 577133	ob23	70°57'00"	C		0.08	C	
MA 5 DP 577133	ALP 15 DP 577133	ob10	332°48'05"	M		39.815	M	
ALP 15 DP 577133	ALP 3 DP 577133	ob24	334°57'00"	M		73.00	M	
ALP 4 DP 577133	UNMK 16 DP 577133	ob8	64°04'00"	M		18.98	M	
UNMK 16 DP 577133	ALP 15 DP 577133	ob28	234°04'00"	M		19.13	M	
IT II SO 55174	IS I DP 104423	ob22	155°52'40"	A DP 104423	0°00'00"	40.23	A DP 104423	
IS I DP 104423	IS VI DP 93112	ob30	155°52'40"	A DP 104423	0°00'00"	10.14	A DP 104423	
IS VI DP 93112	IT V DP 93112	ob32	152°53'00"	A DP 93112	0°00'00"	59.53	A DP 93112	
IT V DP 93112	IS IV DP 93112	ob34	63°03'00"	A DP 93112	0°00'00"	34.94	A DP 93112	
IS IV DP 93112	MA II DP 202889	ob36	63°03'00"	A DP 93112	0°00'00"	14.98	C	
MA II DP 202889	MA I DP 202889	ob35	63°03'00"	A DP 202889	0°00'00"	29.27	A DP 202889	
IS IV DP 93112	IS X DP 93112	ob37	334°21'00"	A DP 93112	0°00'00"	30.59	A DP 93112	
IS X DP 93112	PEG (1) DP 93112	ob38	329°42'00"	A DP 93112	0°00'00"	16.39	A DP 93112	

Mark and Vector

Survey Number DP 577133

Meridional Circuit Mount Eden 2000

From	To	Code	Bearing	Adpt Surv	Bearing Correction	Distance	Adpt Surv	Class
PEG (1) DP 93112	IT III DP 104423	ob39	330°27'00"	A DP 104423	0°00'00"	16.69 A	DP 104423	
IT III DP 104423	IS II DP 104423	ob40	332°38'00"	A DP 104423	0°00'00"	33.96 A	DP 104423	
IS I DP 104423	IT III DP 104423	ob31	73°15'00"	A DP 104423	0°00'00"	34.13 A	DP 104423	
IS VI DP 93112	PEG (1) DP 104423	ob33	36°20'00"	A DP 104423	0°00'00"	4.99 A	DP 104423	
PEG (1) DP 104423	PEG (4) DP 104423	ob45	63°12'00"	A DP 104423	0°00'00"	15.22 A	DP 104423	Class A
PEG (4) DP 104423	IT III DP 104423	ob46	55°43'00"	A DP 104423	0°00'00"	14.52 A	DP 104423	
IT III DP 104423	PEG (3) DP 104423	ob41	194°02'00"	A DP 104423	0°00'00"	22.04 A	DP 104423	
PEG (3) DP 104423	PEG (1) DP 93112	ob47	63°12'00"	A DP 104423	0°00'00"	15.21 A	DP 104423	Class A
IT III DP 104423	PEG (5) DP 104423	ob42	129°42'00"	A DP 104423	0°00'00"	2.06 A	DP 104423	
PEG (5) DP 104423	PEG (1) DP 93112	ob51	153°17'00"	A DP 104423	0°00'00"	14.78 A	DP 104423	Class A
IS II DP 104423	PEG (2) DP 104423	ob15	224°00'00"	A DP 104423	0°00'00"	14.86 A	DP 104423	
PEG (2) DP 104423	PEG DP 104423	ob49	243°11'20"	A DP 104423	0°00'00"	15.24 A	DP 104423	Class A
PEG DP 104423	IT II SO 55174	ob52	326°07'00"	A DP 104423	0°00'00"	17.23 A	DP 104423	
PEG DP 104423	PEG (1) DP 104423	ob53	153°14'30"	A DP 104423	0°00'00"	30.96 A	DP 104423	Class A
IT III DP 104423	PEG (7) DP 104423	ob43	255°14'00"	A DP 104423	0°00'00"	14.72 A	DP 104423	
PEG (7) DP 104423	PEG (8) DP 104423	ob54	94°18'00"	A DP 104423	0°00'00"	9.60 A	DP 104423	Class A
PEG (8) DP 104423	IT III DP 104423	ob56	46°12'00"	A DP 104423	0°00'00"	6.46 A	DP 104423	
PEG (8) DP 104423	PEG (5) DP 104423	ob57	63°12'00"	A DP 104423	0°00'00"	7.00 A	DP 104423	Class A
PEG (2) DP 104423	PEG (7) DP 104423	ob50	153°15'00"	A DP 104423	0°00'00"	26.00 A	DP 104423	Class A
PEG (3) DP 195	DISK 33 DP 577133	ob64	153°14'30"	A DP 104423	0°00'00"	7.62 C		Class A
DISK 33 DP 577133	PEG DP 195	ob58	153°14'30"	A DP 104423	0°00'00"	38.10 C		
PEG DP 195	PEG (1) DP 195	ob60	63°12'00"	A DP 195	0°00'00"	15.24 A	DP 195	
PEG (1) DP 195	PEG (2) DP 93112	ob61	63°12'00"	A DP 195	0°00'00"	15.24 A	DP 195	
PEG (2) DP 93112	IS IV DP 93112	ob62	136°33'00"	A DP 93112	0°00'00"	1.31 A	DP 93112	
PEG (3) DP 104423	DISK 37 DP 577133	ob48	153°12'00"	A DP 195	0°00'00"	7.55 C		Class A

Mark and Vector

Survey Number DP 577133

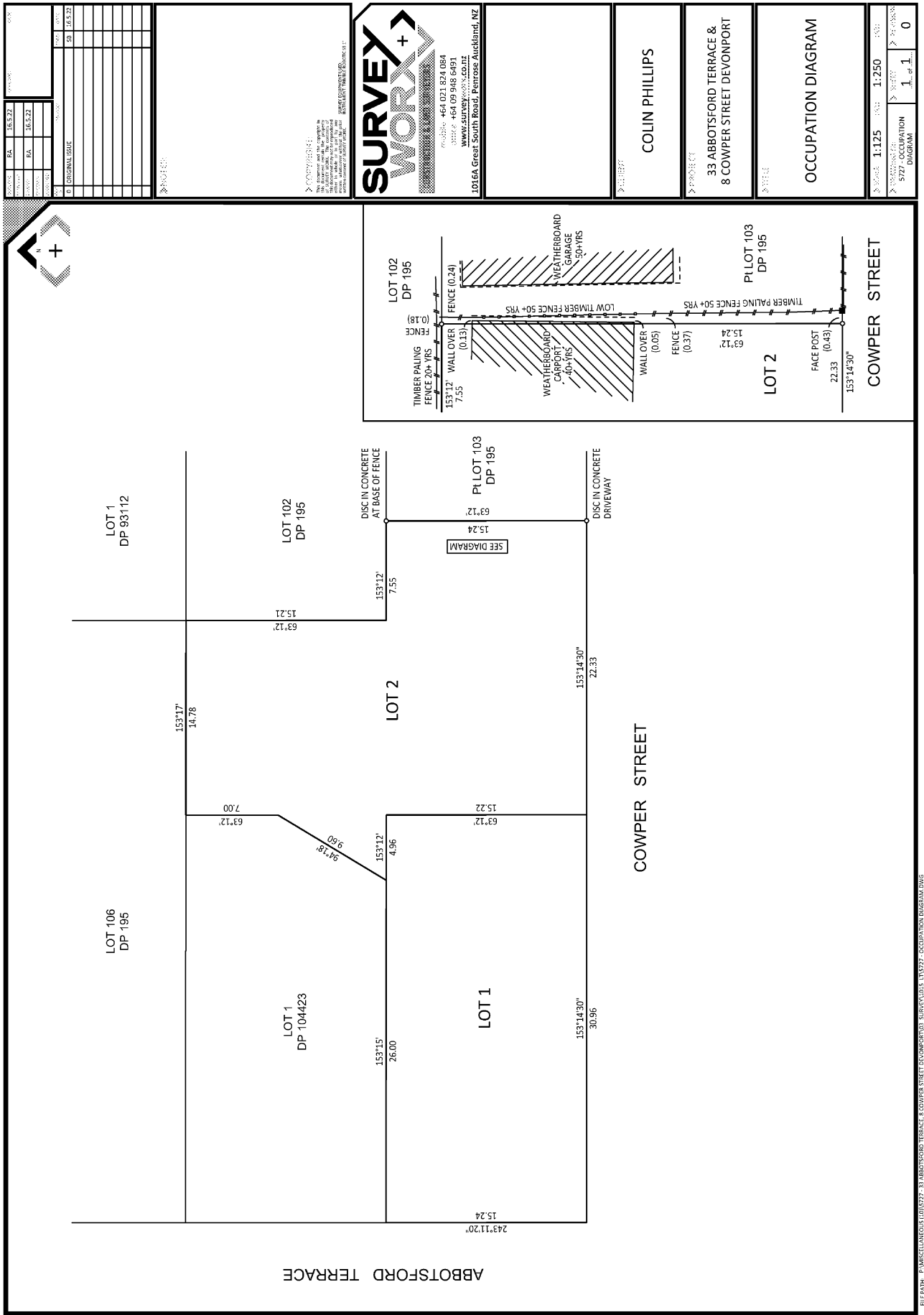
Meridional Circuit Mount Eden 2000

From	To	Code	Bearing	Adpt Surv	Bearing Correction	Distance	Adpt Surv	Class
DISK 37 DP 577133	PEG (1) DP 195	ob63	153°12'00"	A DP 195	0°00'00"	38.10 C		
DISK 33 DP 577133	DISK 37 DP 577133	ob59	63°12'00"	C		15.24 C		Class A
PEG (7) DP 104423	PEG (4) DP 104423	ob55	153°12'00"	C		4.96 C		Class A
ALP 15 DP 577133	DISK 33 DP 577133	ob25	58°26'00"	M		4.24 M		
ALP 15 DP 577133	DISK 37 DP 577133	ob26	62°08'00"	M		19.45 M		
UNMK 16 DP 577133	DISK 37 DP 577133	ob29	141°23'00"	M		2.73 M		
MA 5 DP 577133	MA II DP 202889	ob11	62°14'00"	M		49.76 M		
ALP 15 DP 577133	ALP 4 DP 577133	ob27	331°42'00"	M		3.33 M		
IT 9 DP 577133	IS 12 DP 577133	ob16	244°32'20"	M		106.89 M		
PEG (1) DP 104423	PEG (3) DP 195	ob44	153°14'30"	A DP 104423	0°00'00"	14.71 C		Class A

Mark Name	Mark Condition	Description
IS 12 DP 577133		IS I SO 55174 disturbed
IT 9 DP 577133		IT II SO 55174 disturbed
UNMK 16 DP 577133		Temporary mark black marker pen on step
IS I DP 104423	Destroyed	
IS IV DP 93112	Searched For and Not Found	
IS VI DP 93112	Searched For and Not Found	
IT V DP 93112	Searched For and Not Found	

*** End of Report ***

Occupation Diagram



DATE OF ISSUE	16.5.22
ISSUED BY	COLIN PHILLIPS
PROJECT NO.	577
CLIENT	33 ABBOTSFORD TERRACE & 8 COWPER STREET DEVONPORT
PROJECT	OCCUPATION DIAGRAM
SCALE	1:250
DRAWN BY	J. PHILLIPS
CHECKED BY	J. PHILLIPS
DATE OF REVISION	0

SURVEY WORX +

1016A Great South Road, Pentrose Auckland, NZ

Mobile: +64 021 824 084
Office: +64 09 948 6191
www.surveyworx.co.nz

COLIN PHILLIPS

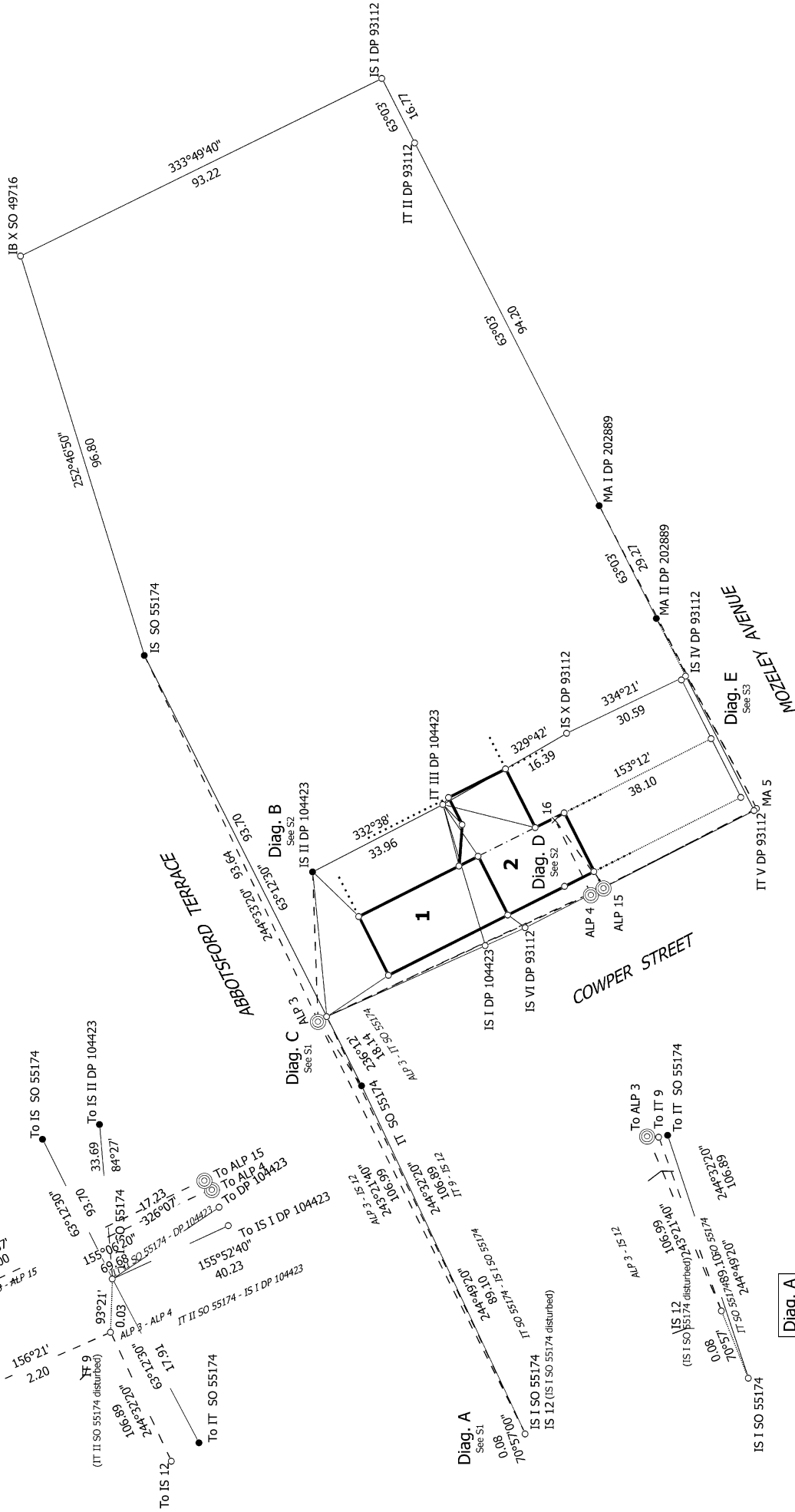
PROJECT: 33 ABBOTSFORD TERRACE & 8 COWPER STREET DEVONPORT

OCCUPATION DIAGRAM

DATE OF ISSUE	16.5.22
ISSUED BY	COLIN PHILLIPS
PROJECT NO.	577
CLIENT	33 ABBOTSFORD TERRACE & 8 COWPER STREET DEVONPORT
PROJECT	OCCUPATION DIAGRAM
SCALE	1:250
DRAWN BY	J. PHILLIPS
CHECKED BY	J. PHILLIPS
DATE OF REVISION	0

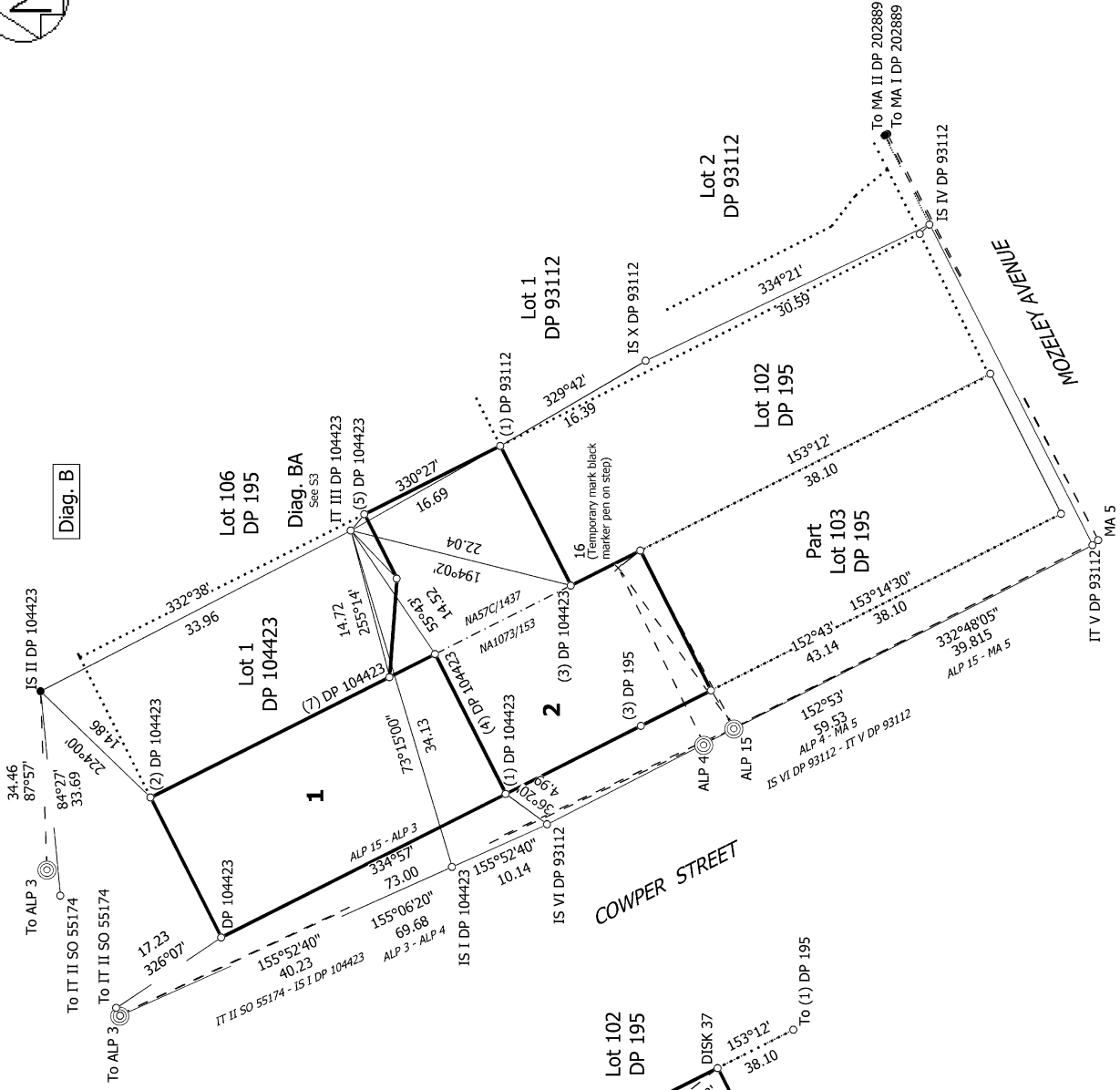
FILE PATH: I:\MAPCELL\DWG\577-33 ABBOTSFORD TERRACE & COWPER STREET DEVONPORT SURVEY\DWG\170727_OCCUPATION DIAGRAM.DWG

PLOT DATE: 5/16/2022 1:51 pm

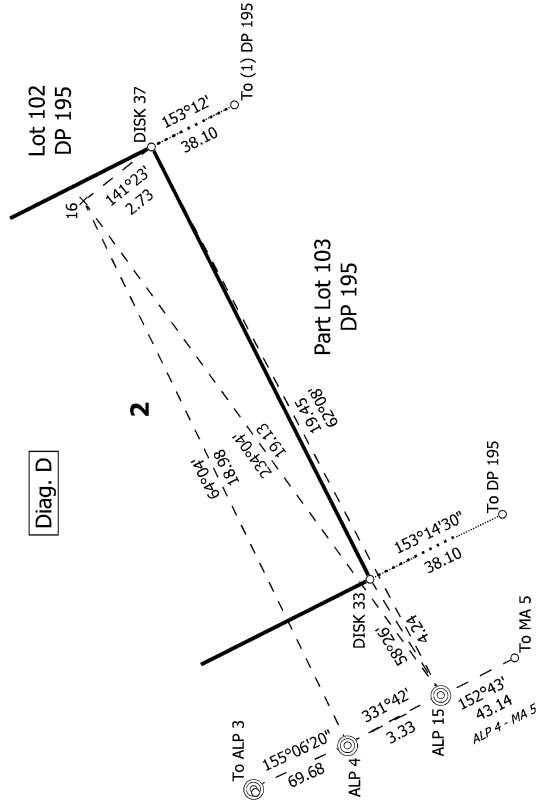




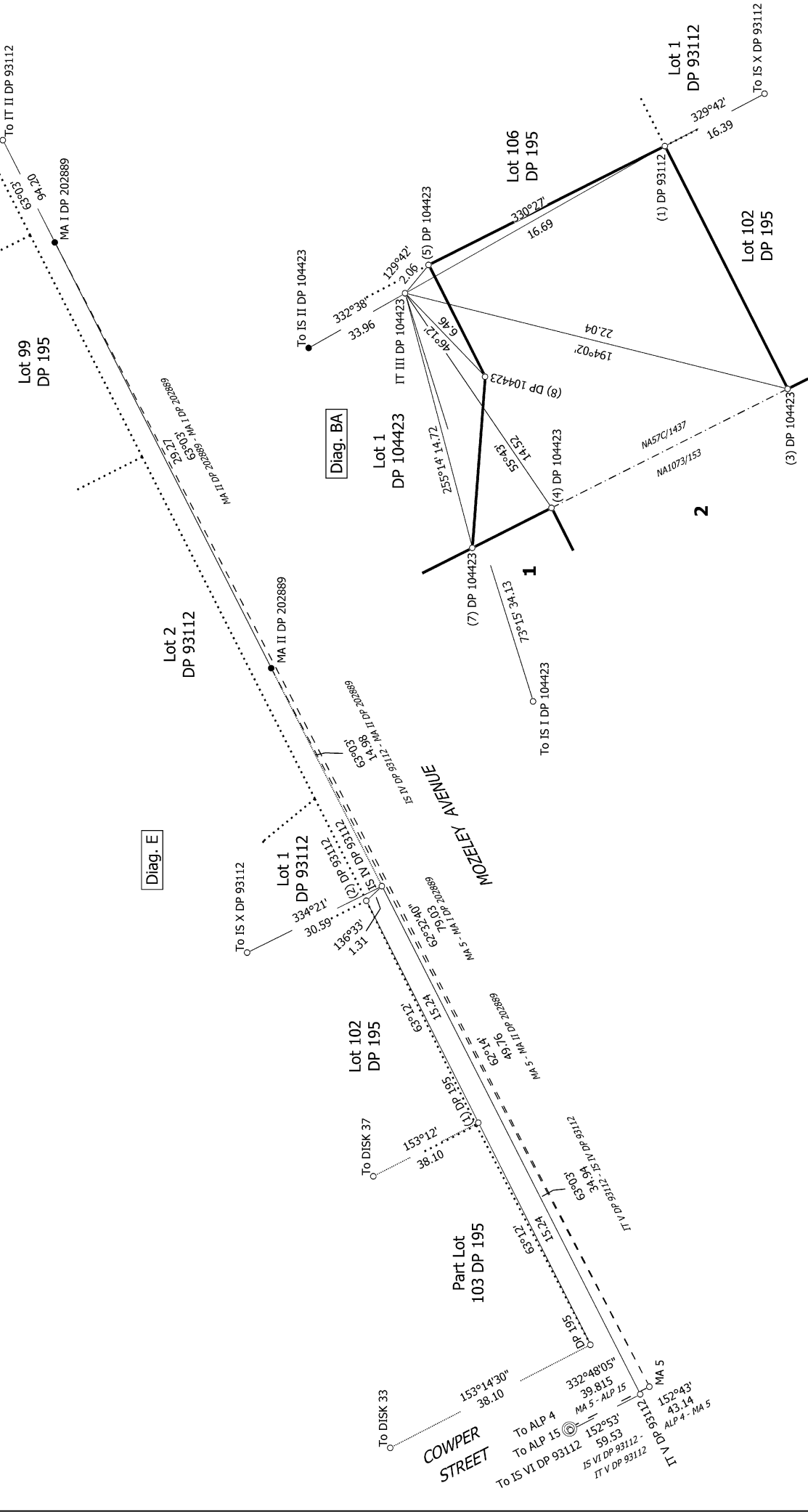
Diag. B



Diag. D



<p>Land District: North Auckland</p> <p>Digitally Generated Plan</p> <p>Generated on: 23/08/2022 06:16am Page 7 of 9</p>	<p>Lots 1 & 2 being a Subdivision of Lot 2 DP 104423, Part Lot 103 DP 195 & Part Lot 104 DP 195</p> <p>Surveyor: Richard Stuart Abbott Firm: Survey Work Ltd Date of Survey: 16/05/2022</p>	<p>Record of Survey DP 577133</p> <p>Deposited on: 1/08/2022</p>
---	--	---

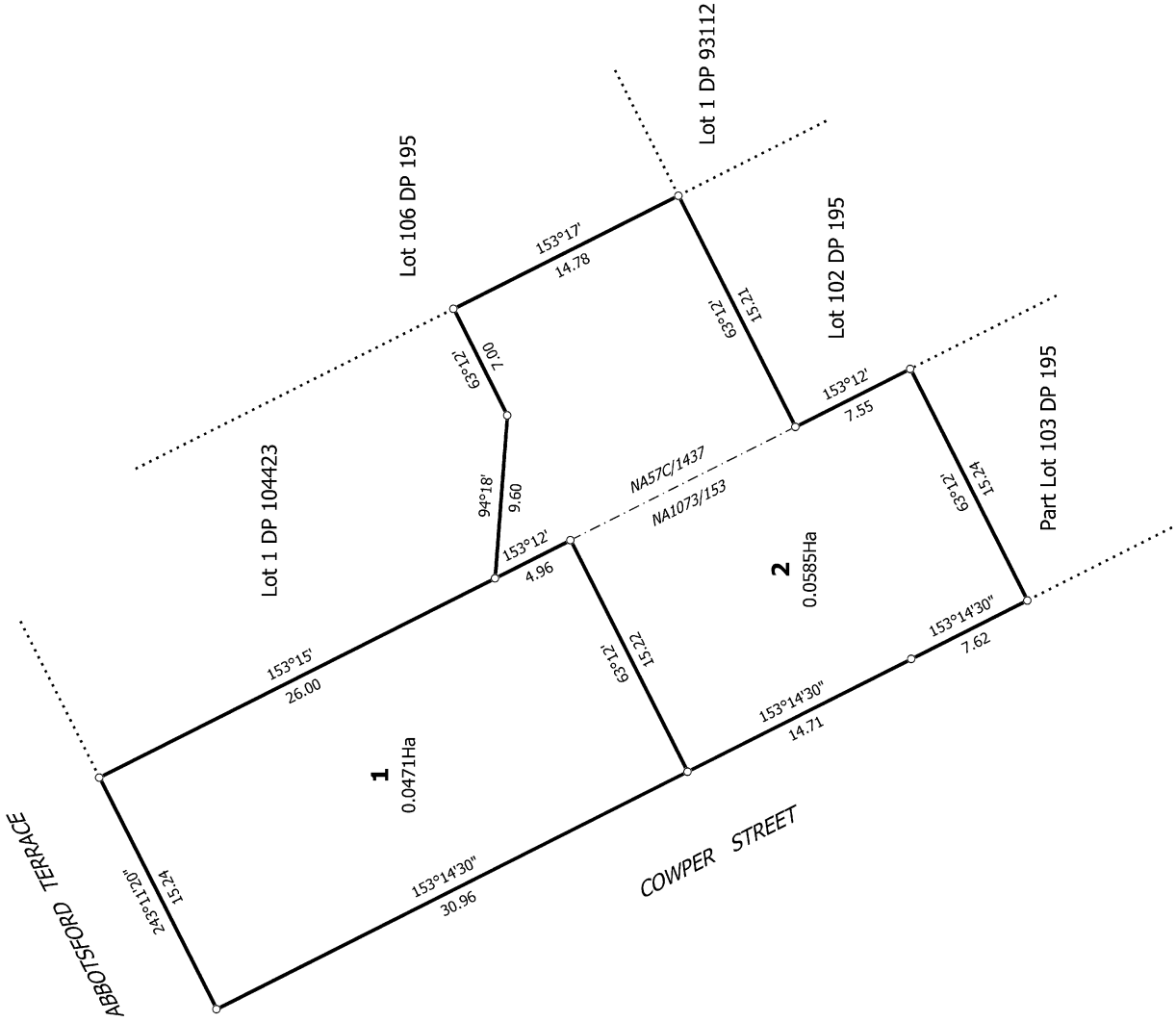


Diag. E

Diag. BA

S 3/3

<p>Land District: North Auckland</p> <p>Digitally Generated Plan</p> <p>Generated on: 23/08/2022 06:16am Page 8 of 9</p>	<p>Lots 1 & 2 being a Subdivision of Lot 2 DP 104423, Part Lot 103 DP 195 & Part Lot 104 DP 195</p>	<p>Surveyor: Richard Stuart Abbott</p> <p>Firm: Survey Work Ltd</p> <p>Date of Survey: 16/05/2022</p>	<p>Record of Survey</p> <p>DP 577133</p> <p>Deposited on: 1/08/2022</p>
---	--	---	---



T 1/1

Lots 1 & 2 being a Subdivision of Lot 2 DP 104423, Part Lot 103 DP 195 & Part Lot 104 DP 195

Surveyor: Richard Stuart Abbott
 Firm: Survey Work Ltd
 Date of Survey: 16/05/2022

Record of Survey
 DP 577133
 Deposited on: 1/08/2022