

Record of Survey - DP 578323

Survey Number DP 578323
Surveyor Reference 449512 - 18 Winchester & 21 Exeter Sts, Lyttelton
Surveyor Andrew Peter Marr
Survey Firm Eliot Sinclair & Partners Ltd
Surveyor Declaration I Andrew Peter Marr, being a licensed cadastral surveyor, certify that--
 (a) this dataset provided by me and its related survey are accurate, correct and in accordance with the Cadastral Survey Act 2002 and Cadastral Survey Rules 2021; and
 (b) the survey was undertaken by me or under my personal direction.
 Declared on 01 Sep 2022 04:44 PM

Survey Details

Dataset Description Lots 1 and 2 Being Definition of Section 68 Town of Lyttelton and Part Section 89 Town of Lyttelton
Purpose Limited Title
Status Deposited **Type** Survey
Land District Canterbury **Survey Class** Class A
Meridional Circuit Mount Pleasant 2000 **Vertical Datum** None

Survey Dates

Surveyed Date 07/07/2022 **Certified Date** 01/09/2022
Submitted Date 01/09/2022 16:44:44 **Survey Approval Date** 19/09/2022
Deposit Date 29/07/2022

Referenced Surveys

Survey Number	Land District	Bearing Correction
A 11251	Canterbury	0°00'15"
DP 44302	Canterbury	0°00'00"
DP 36544	Canterbury	0°00'20"
DP 423744	Canterbury	0°00'00"
DP 433121	Canterbury	0°00'00"
SO 530690	Canterbury	0°00'00"

Territorial Authorities

Christchurch City

Comprised In

RT CB24A/739 Ltd
RT CB398/235 Ltd

Created Parcels

Parcels	Parcel Intent	Area	RT Reference
Lot 1 Deposited Plan 578323	Fee Simple Title	0.0629 Ha	1075581
Lot 2 Deposited Plan 578323	Fee Simple Title	0.1018 Ha	1075582
Total Area		0.1647 Ha	

Mark and Vector

Survey Number DP 578323

Meridional Circuit Mount Pleasant 2000

From	To	Code	Bearing	Adpt Surv	Bearing Correction	Distance	Adpt Surv	Class
MA 1 DP 578323	NAIL 3 DP 578323	ob0	300°30'40" M			76.79 M		
NAIL 3 DP 578323	MA 2 DP 578323	ob12	58°15'35" M			136.94 M		
MA 2 DP 578323	MA 30 SO 486344	ob5	158°01'05" M			143.82 M		
MA 30 SO 486344	MA 1 DP 578323	ob49	282°06'30" M			106.50 M		
MA 1 DP 578323	IT 5 DP 578323	ob1	14°15'00" M			41.15 M		
IT 5 DP 578323	NAIL 3 DP 578323	ob13	269°19'40" M			76.29 M		
IT 5 DP 578323	IT 6 DP 578323	ob14	21°29'00" M			21.77 M		
IT 6 DP 578323	MA 1 DP 578323	ob18	196°45'00" M			62.81 M		
IT 6 DP 578323	NAIL 32 DP 578323	ob19	19°51'00" M			19.54 M		
NAIL 32 DP 578323	MA 2 DP 578323	ob54	38°10'00" M			41.35 M		
MA 2 DP 578323	IR V DP 423744	ob6	299°48'00" M			37.45 M		
MA 2 DP 578323	IS I DP 36544	ob7	34°35'00" M			6.78 M		
MA 2 DP 578323	IT II DP 36544	ob8	94°44'00" M			25.29 M		
IR V DP 423744	DISK 12 DP 578323	ob26	133°24'00" A	DP 423744	0°00'00"	25.06 A	DP 423744	
IR V DP 423744	IS I DP 36544	ob27	109°44'20" A	DP 423744	0°00'00"	38.62 A	DP 423744	
IS I DP 36544	IT II DP 36544	ob29	109°44'20" A	DP 423744	0°00'00"	22.69 A	DP 423744	
IS I DP 36544	DISK 16 DP 578323	ob30	217°29'20" A	DP 36544	0°00'20"	10.56 A	DP 36544	
IS I DP 36544	IS VI DP 36544	ob31	200°04'20" A	DP 36544	0°00'20"	32.09 A	DP 36544	
IS VI DP 36544	IS V DP 36544	ob33	202°54'20" A	DP 36544	0°00'20"	23.89 A	DP 36544	
IS V DP 36544	IT IV DP 36544	ob34	106°23'40" A	DP 36544	0°00'20"	27.17 A	DP 36544	
IT IV DP 36544	IT II DP 36544	ob36	16°39'20" A	DP 36544	0°00'20"	54.44 A	DP 36544	
IS V DP 36544	DISK 20 DP 578323	ob35	220°20'20" A	DP 36544	0°00'20"	4.86 A	DP 36544	
DISK 20 DP 578323	PEG 36 DP 578323	ob37	19°44'20" A	DP 36544	0°00'20"	18.34 C		Class A
PEG 36 DP 578323	DISK 16 DP 578323	ob63	19°44'20" A	DP 36544	0°00'20"	32.10 C		Class A
DISK 12 DP 578323	DISK 16 DP 578323	ob32	109°44'20" A	DP 423744	0°00'00"	12.45 A	DP 423744	Class A
IR V DP 423744	IR IV DP 423744	ob28	155°03'00" A	DP 423744	0°00'00"	31.00 A	DP 423744	
IR IV DP 423744	RN III DP 423744	ob66	199°23'00" A	DP 423744	0°00'00"	33.43 A	DP 423744	
RN III DP 423744	IR I DP 423744	ob68	292°44'30" A	DP 423744	0°00'00"	58.06 A	DP 423744	
IR I DP 423744	SS 717 SO 18195	ob39	199°46'30" A	DP 423744	0°00'00"	68.335 A	DP 423744	
SS 717 SO 18195	NAIL V SO 475692	ob41	109°46'45" A	SO 530690	0°00'00"	92.28 A	SO 530690	

Mark and Vector

Survey Number DP 578323

Meridional Circuit Mount Pleasant 2000

From	To	Code	Bearing	Adpt Surv	Bearing Correction	Distance	Adpt Surv	Class
IR I DP 62657	IS 29 SO 486344	ob73	109°47'50"	A SO 530690	0°00'00"	56.08 A	SO 530690	
IS 29 SO 486344	IS V DP 11831	ob25	109°12'00"	A SO 530690	0°00'00"	1.28 A	SO 530690	
IS V DP 11831	MA 30 SO 486344	ob50	87°21'00"	A SO 530690	0°00'00"	18.28 A	SO 530690	
IR I DP 423744	MA IX DP 44302	ob40	148°03'00"	A DP 423744	0°00'00"	12.82 A	DP 423744	
RN III DP 423744	UNMK XX DP 423744	ob69	189°41'00"	A DP 423744	0°00'00"	5.07 A	DP 423744	
UNMK XX DP 423744	DISK 42 DP 578323	ob70	19°48'00"	A DP 433121	0°00'00"	18.29 C		Class A
DISK 42 DP 578323	DISK 12 DP 578323	ob65	19°48'00"	A DP 433121	0°00'00"	32.12 C		Class A
UNMK XX DP 423744	RN XXa DP 423744	ob71	109°54'00"	A DP 423744	0°00'00"	1.00 A	DP 423744	Class A
RN XXa DP 423744	PEG 37 DP 578323	ob72	109°54'00"	A DP 423744	0°00'00"	11.26 C		Class A
PEG 37 DP 578323	DISK 20 DP 578323	ob58	109°54'00"	A DP 423744	0°00'00"	0.25 C		Class A
MA IX DP 44302	MA VIII DP 44302	ob43	109°46'00"	A DP 423744	0°00'00"	20.12 A	DP 423744	
MA VIII DP 44302	PEG 38 DP 578323	ob44	109°54'00"	A DP 423744	0°00'00"	20.68 C		
PEG 38 DP 578323	UNMK XX DP 423744	ob57	109°54'00"	A DP 423744	0°00'00"	8.01 C		Class A
SS 717 SO 18195	UNMK (25) DP 44302	ob42	64°46'20"	A DP 44302	0°00'00"	14.22 A	DP 44302	
NAIL V SO 475692	PEG (26) A 11251	ob24	19°46'45"	A A 11251	0°00'15"	10.06 A	A 11251	
PEG (26) A 11251	PEG (27) A 11251	ob45	289°46'45"	A A 11251	0°00'15"	0.76 A	A 11251	
PEG (27) A 11251	DISK 28 DP 578323	ob46	289°46'45"	C		20.40 C		
DISK 28 DP 578323	DISK 31 DP 578323	ob47	289°46'45"	C		20.25 C		Class A
DISK 31 DP 578323	UNMK (25) DP 44302	ob51	289°46'45"	C		40.82 C		
DISK 28 DP 578323	PEG 37 DP 578323	ob48	19°46'45"	C		50.24 C		Class A
DISK 31 DP 578323	DISK 39 DP 578323	ob52	19°46'45"	C		19.00 C		Class A
DISK 39 DP 578323	DISK 40 DP 578323	ob60	18°23'00"	C		3.60 C		
DISK 40 DP 578323	DISK 41 DP 578323	ob61	19°10'00"	C		13.74 C		
DISK 41 DP 578323	PEG 38 DP 578323	ob62	20°40'00"	C		13.95 C		
PEG 36 DP 578323	DISK 42 DP 578323	ob64	289°40'00"	C		12.48 C		

Mark and Vector

Survey Number DP 578323

Meridional Circuit Mount Pleasant 2000

From	To	Code	Bearing	Adpt Surv	Bearing Correction	Distance	Adpt Surv	Class
NAIL 32 DP 578323	DISK 42 DP 578323	ob55	5°57'00" M			3.70 M		
NAIL 32 DP 578323	PEG 36 DP 578323	ob56	92°23'00" M			12.15 M		
IT 6 DP 578323	PEG 38 DP 578323	ob20	318°30'00" M			10.12 M		
IT 6 DP 578323	PEG 37 DP 578323	ob21	86°47'00" M			12.37 M		
IT 6 DP 578323	DISK 20 DP 578323	ob22	87°13'00" M			12.60 M		
IT 5 DP 578323	DISK 41 DP 578323	ob15	346°06'00" M			15.22 M		
IT 5 DP 578323	DISK 40 DP 578323	ob16	282°26'00" M			8.37 M		
IT 5 DP 578323	DISK 39 DP 578323	ob17	260°10'00" M			9.44 M		
MA 1 DP 578323	DISK 31 DP 578323	ob2	344°38'00" M			21.15 M		
MA 1 DP 578323	DISK 28 DP 578323	ob3	44°48'00" M			19.09 M		
MA 2 DP 578323	DISK 12 DP 578323	ob9	275°32'00" M			14.36 M		
MA 2 DP 578323	DISK 16 DP 578323	ob10	222°40'00" M			3.80 M		
RN III DP 423744	RN XXa DP 423744	ob67	179°04'00" M	A DP 423744	0°00'00"	5.35 A DP 423744		
NAIL 32 DP 578323	RN XXa DP 423744	ob53	199°22'00" M			14.70 M		
NAIL 3 DP 578323	IR I DP 423744	ob11	31°13'30" M			62.50 M		
IR I DP 423744	IR V DP 423744	ob38	54°11'30" M			63.58 M		
MA 2 DP 578323	MT PLEASANT	ob4	17°09'00" M					
NAIL V SO 475692	IR I DP 62657	ob23	109°46'45" A	SO 530690	0°00'00"	2.06 A SO 530690		
DISK 39 DP 578323	PEG 38 DP 578323	ob59	19°46'45" C			31.29 C		Class A

Mark Name	Mark Condition	Description
DISK 12 DP 578323		Top of wall. Reinstates DISK VI DP 423744
DISK 16 DP 578323		Top of wall. Reinstates Peg VII DP 36544
DISK 20 DP 578323		fl. in conc footing of fence post. Reinstates Peg XI DP 36544
DISK 28 DP 578323		top of wall
DISK 31 DP 578323		top of wall
DISK 39 DP 578323		fl. in conc.
DISK 40 DP 578323		fl. in conc.

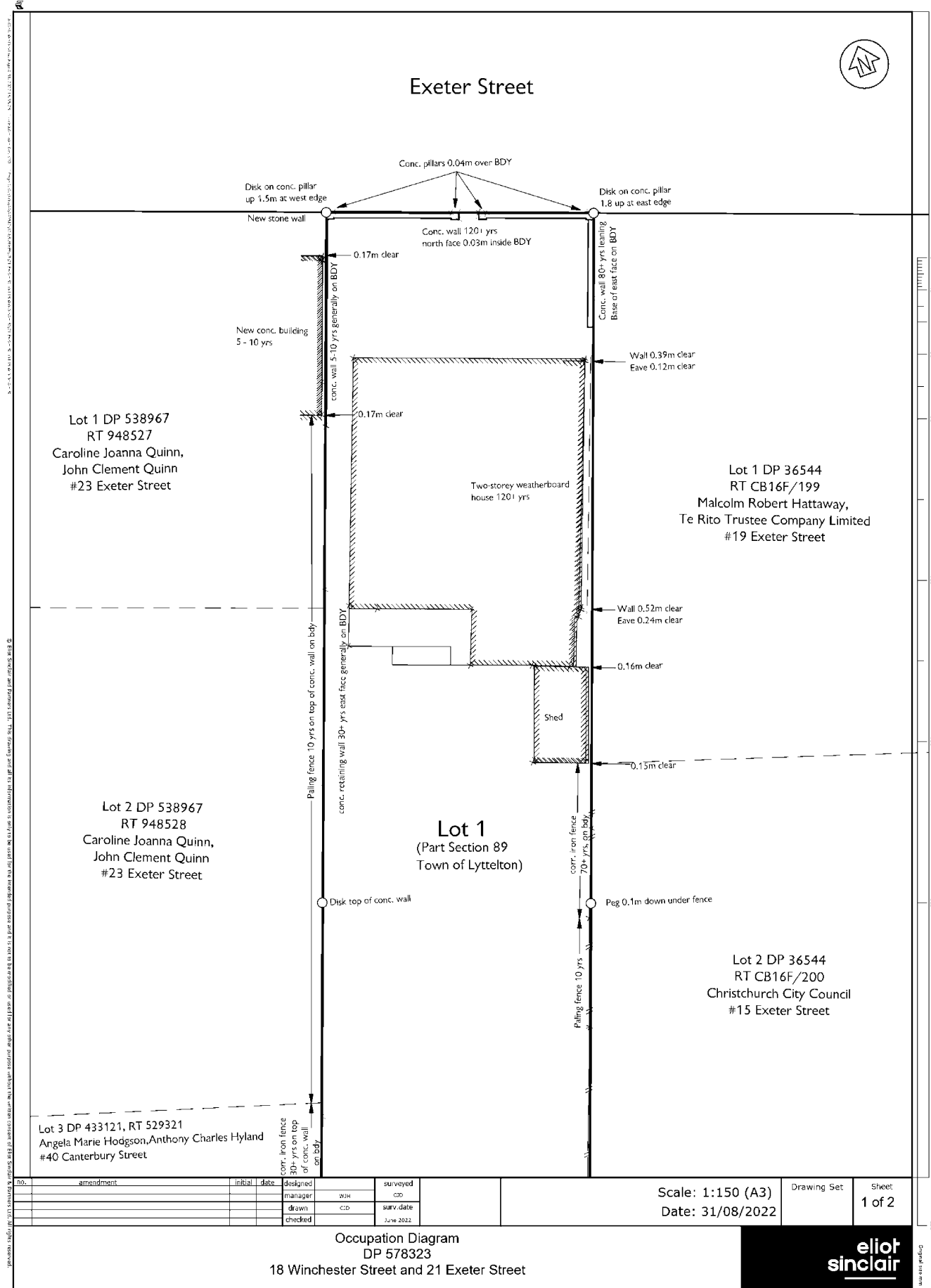
Mark and Vector

Survey Number DP 578323
Meridional Circuit Mount Pleasant 2000

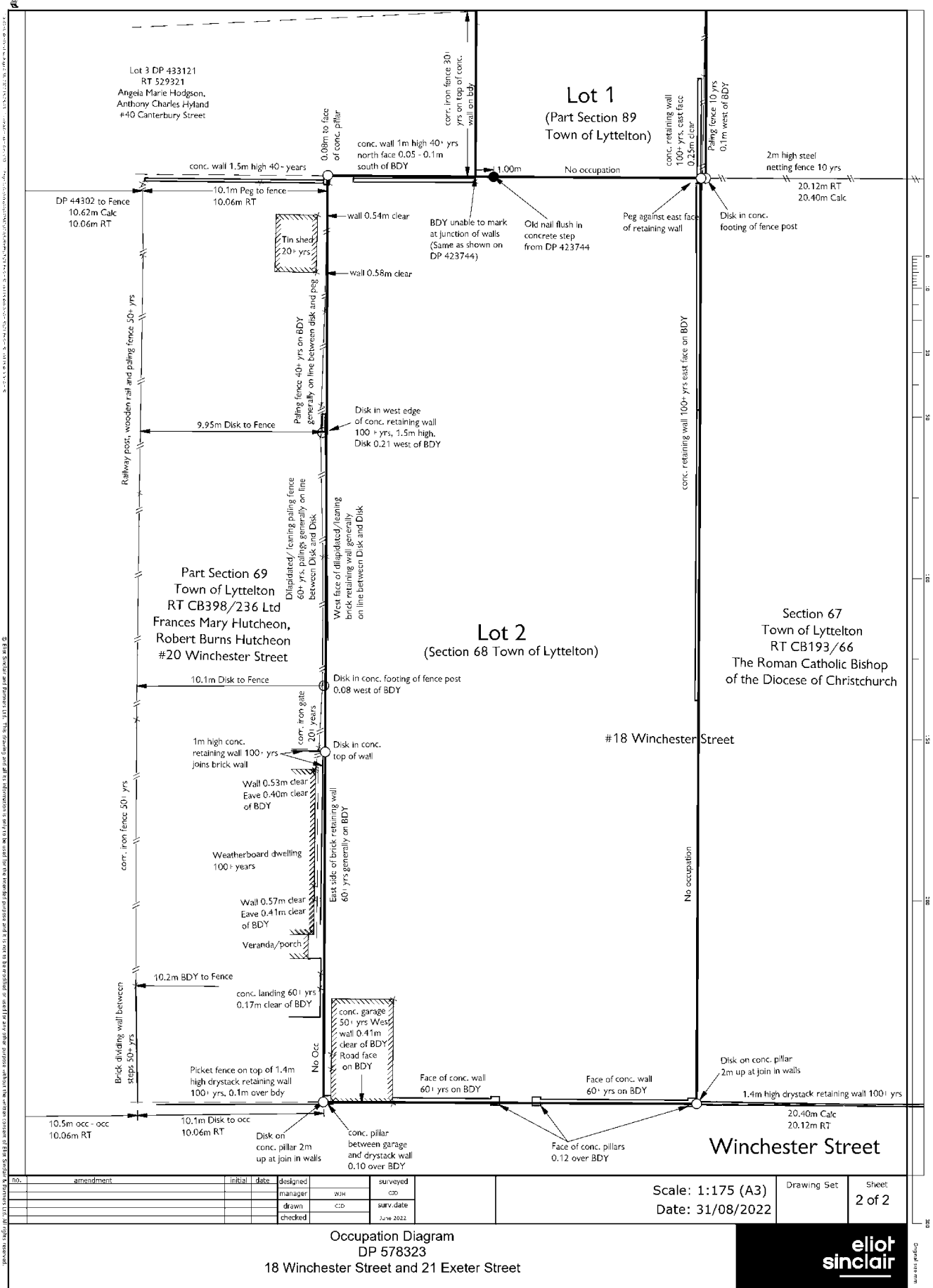
Mark Name	Mark Condition	Description
DISK 41 DP 578323		in side of conc wall 0.5m up
DISK 42 DP 578323		top of wall
IR I DP 423744		fl.
IR V DP 423744		fl.
IS I DP 36544		fl.
IT 5 DP 578323		0.3d
IT 6 DP 578323		0.3d
IT II DP 36544		fl.
MA 1 DP 578323		fl. in footpath
MA 2 DP 578323		fl. in channel
MA 30 SO 486344		fl. in kerb
NAIL 3 DP 578323		flush in kerb
NAIL 32 DP 578323		fl. in conc path
RN XXa DP 423744		fl. in conc. step
IR I DP 62657	Searched For and Not Found	
NAIL V SO 475692	Searched For and Not Found	

*** End of Report ***

Occupation Diagram

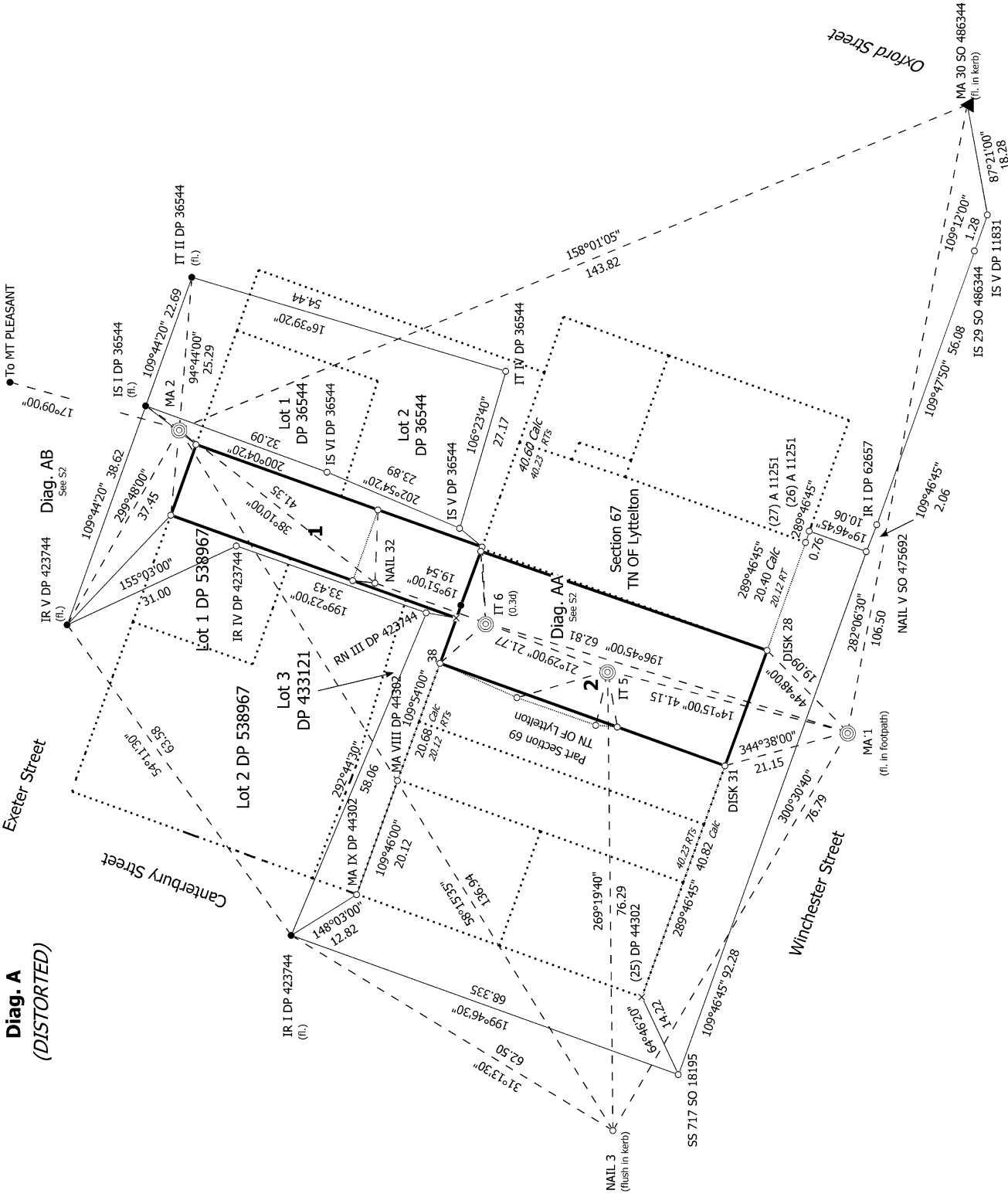


Occupation Diagram





Diag. A
(DISTORTED)



Land District: Canterbury

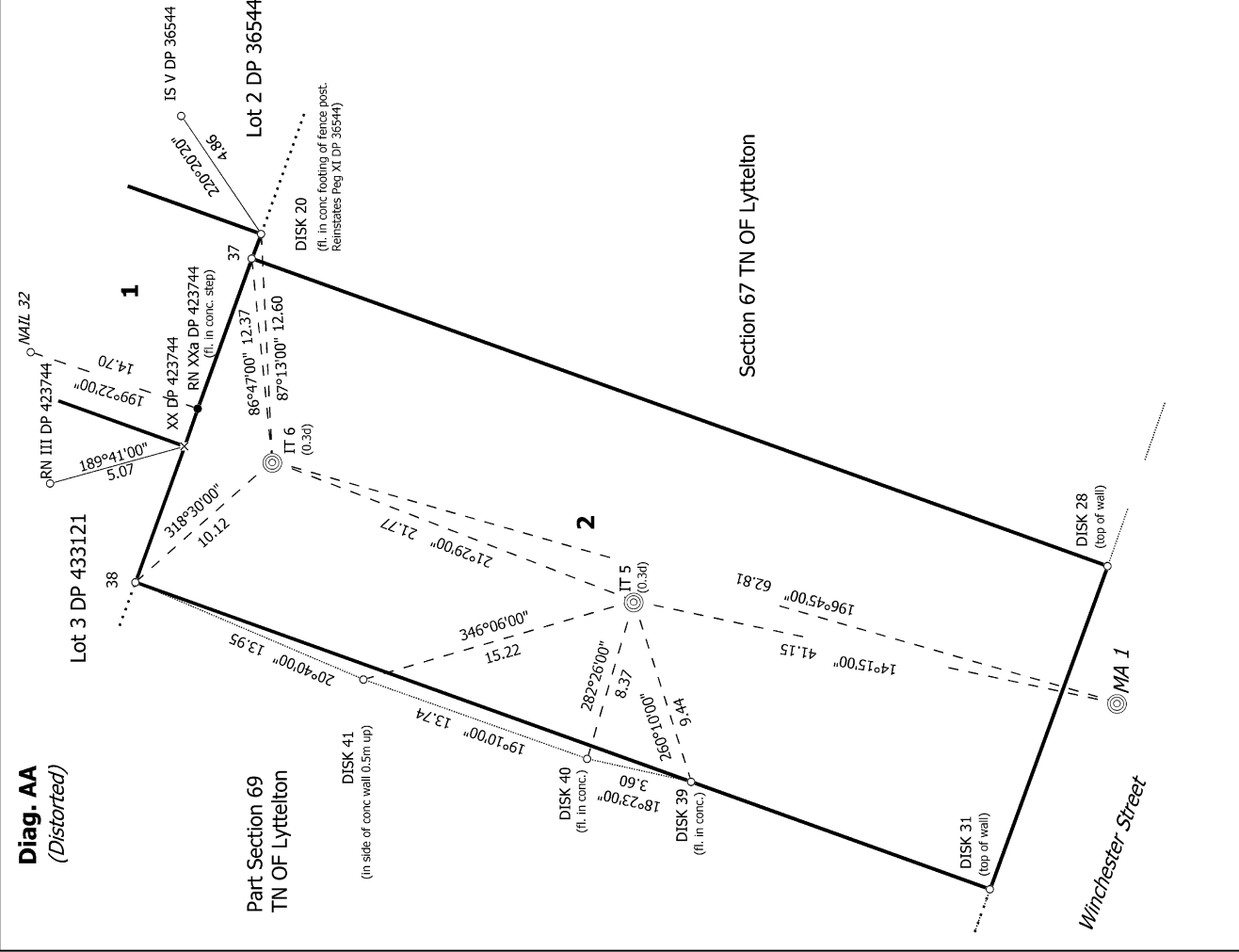
Digitally Generated Plan
Generated on: 01/12/2022 09:05am | Page 8 of 10

Lots 1 and 2 Being Definition of Section 68 Town of Lyttelton and Part Section 89 Town of Lyttelton

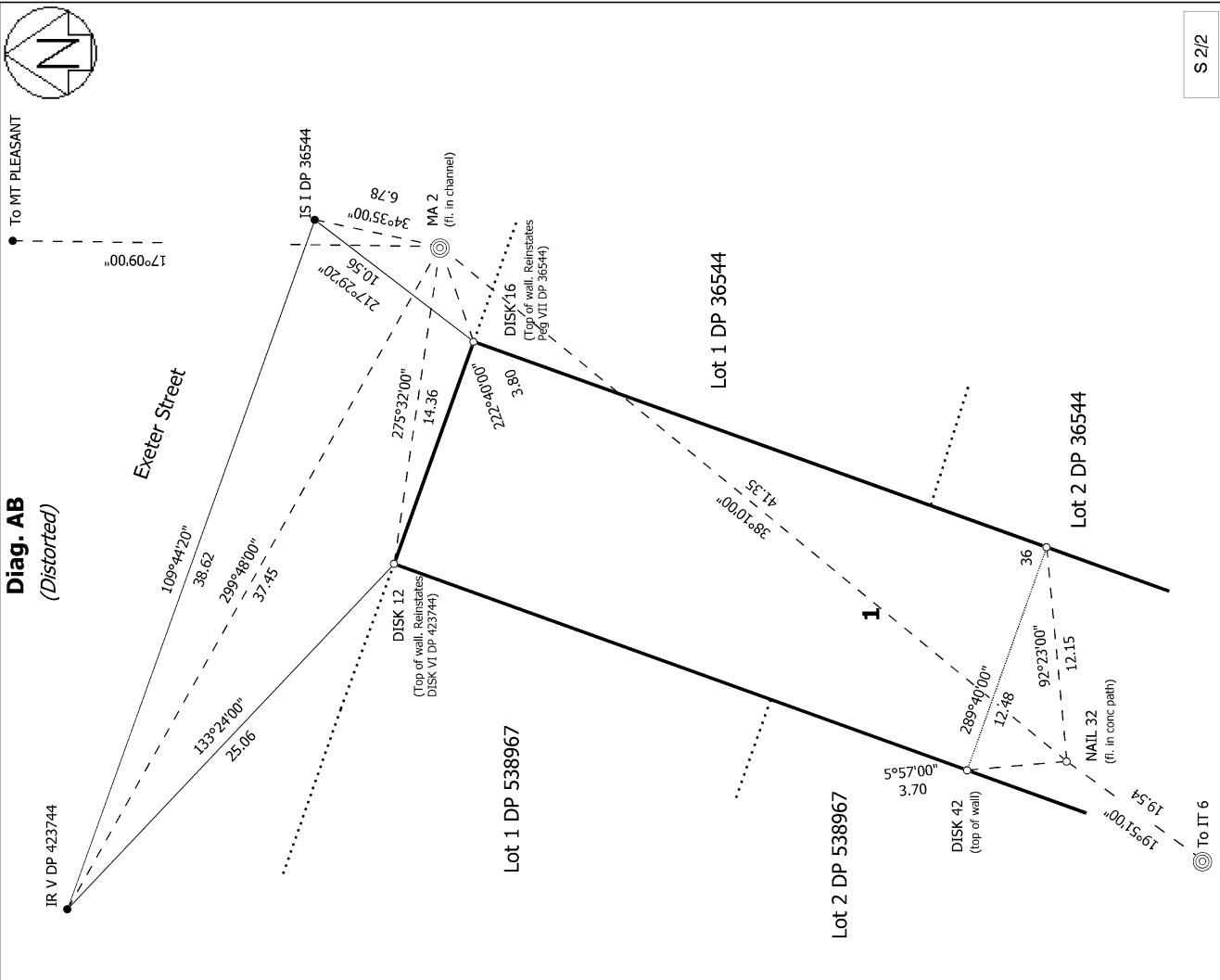
Surveyor: Andrew Peter Marr
Firm: Elliot Sinclair & Partners Ltd
Date of Survey: 7/07/2022

Record of Survey
DP 578323
Deposited on: 29/07/2022

Diag. AA
(Distorted)



Diag. AB
(Distorted)



Land District: Canterbury

Lots 1 and 2 Being Definition of Section 68 Town of Lyttelton and Part Section 89 Town of Lyttelton

Surveyor: Andrew Peter Marr
Firm: Elliot Sinclair & Partners Ltd
Date of Survey: 7/07/2022

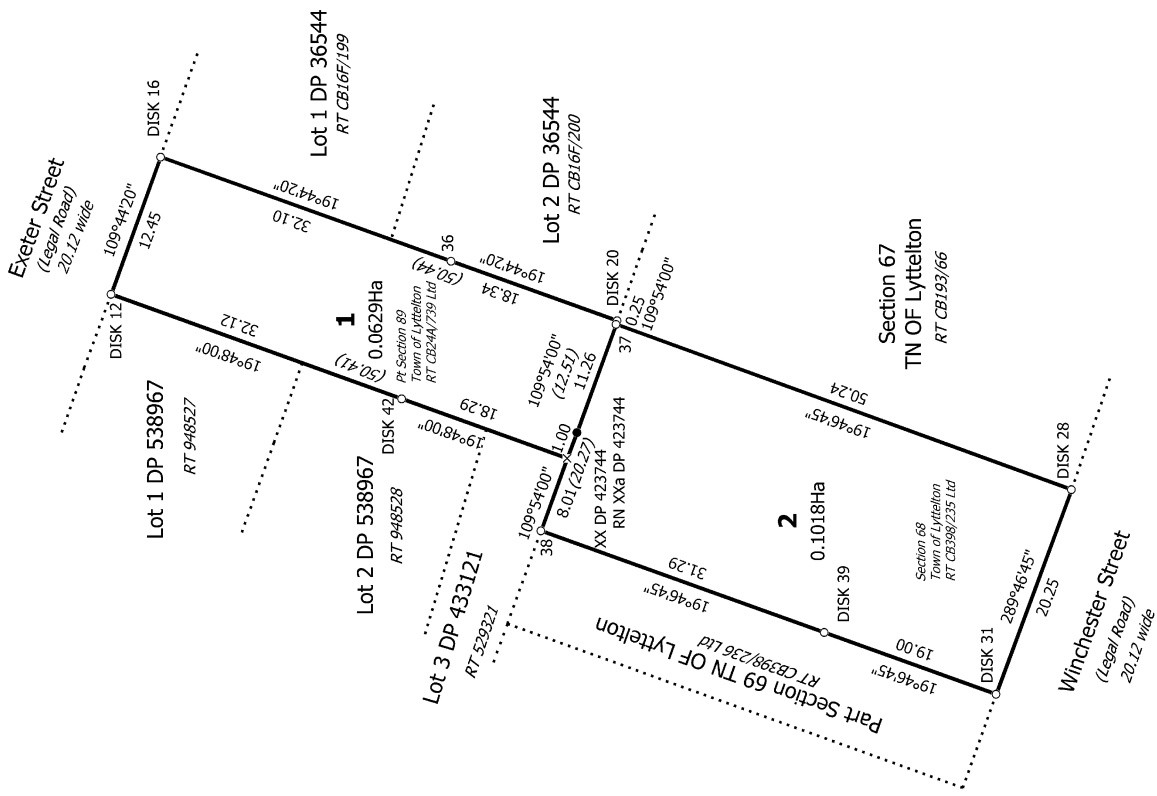
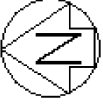
Record of Survey
DP 578323

Digitally Generated Plan

Generated on: 01/12/2022 09:05am Page 9 of 10

Date of Survey: 7/07/2022

Deposited on: 29/07/2022



T 1/1