



Record of Survey - DP 578453

Survey Number DP 578453
Surveyor Reference H20210105 - Iona Road Removal of Limitations
Surveyor Karl Robert Carew
Survey Firm Development Nous Limited
Surveyor Declaration I Karl Robert Carew, being a licensed cadastral surveyor, certify that--
(a) this dataset provided by me and its related survey are accurate, correct and in accordance with the Cadastral Survey Act 2002 and Cadastral Survey Rules 2021; and
(b) the survey was undertaken by me or under my personal direction.
Declared on 26 Jan 2023 01:56 PM

Survey Details

Dataset Description LOT 1 BEING PART OF SUBURBAN SECTION 23 HAVELOCK
Purpose LT Subdivision
Status Deposited **Type** Survey
Land District Hawkes Bay **Survey Class** Class A
Meridional Circuit Hawkes Bay 2000 **Vertical Datum** None

Survey Dates

Surveyed Date 20/07/2022 **Certified Date** 26/01/2023
Submitted Date 26/01/2023 13:56:24 **Survey Approval Date** 30/01/2023
Deposit Date 02/02/2023

Referenced Surveys

Survey Number	Land District	Bearing Correction
DP 19588	Hawkes Bay	0°00'00"
DP 24622	Hawkes Bay	0°00'00"
DP 3002	Hawkes Bay	0°00'20"
DP 3931	Hawkes Bay	0°00'00"
DP 8727	Hawkes Bay	0°00'00"
MISC 2565	Hawkes Bay	0°00'00"
DP 27724	Hawkes Bay	0°00'00"
DP 340534	Hawkes Bay	0°00'00"
DP 513207	Hawkes Bay	0°00'00"
DP 538316	Hawkes Bay	0°00'00"

Territorial Authorities

Hastings District

Comprised In

RT HB144/139 Ltd



Record of Survey - DP 578453

Created Parcels

Parcels	Parcel Intent	Area	RT Reference
Lot 1 Deposited Plan 578453	Fee Simple Title	1.9516 Ha	1070724
Total Area		<u>1.9516 Ha</u>	

Mark and Vector

Survey Number DP 578453

Meridional Circuit Hawkes Bay 2000

From	To	Code	Bearing	Adpt Surv	Bearing Correction	Distance	Adpt Surv	Class
IT II DP 8727	IT X DP 19556	ob0	171°04'30" M			284.54 M		
IT X DP 19556	RM 9 SO 7906	ob2	61°29'20" M			228.24 M		
RM 9 SO 7906	IS I DP 28148	ob4	60°15'50" M			55.81 M		
RM 9 SO 7906	SS XXI SO 4612	ob5	331°37'55" M			322.53 M		
SS XXI SO 4612	IT II DP 8727	ob7	219°20'00" M			144.34 M		
SS XXI SO 4612	CUPL I DP 24622	ob8	154°44'50" M			154.72 M		
CUPL I DP 24622	CUPL III DP 24622	ob9	242°48'00" M			69.03 M		
CUPL III DP 24622	IT II DP 8727	ob10	301°55'00" M			113.21 M		
IT II DP 8727	IS 105 SO 569723	ob1	222°38'00" M			86.67 M		
IS 105 SO 569723	IT VII DP 340534	ob14	217°20'10" M			140.28 M		
IT VII DP 340534	IT 2 DP 513207	ob17	104°24'20" M			172.96 M		
IT 2 DP 513207	IT X DP 19556	ob20	161°59'00" M			65.98 M		
IS 105 SO 569723	IT 1 DP 578453	ob15	75°47'20" M			101.63 M		
IT 1 DP 578453	IT II DP 8727	ob56	314°16'20" M			55.62 M		
IT 1 DP 578453	IT 2 DP 578453	ob57	151°31'30" M			92.73 M		
IT 2 DP 578453	IT 3 DP 578453	ob63	155°09'00" M			62.19 M		
IT 3 DP 578453	IT 2 DP 513207	ob67	244°18'20" M			95.91 M		
IT 3 DP 578453	IT 1 DP 578453	ob68	332°58'40" M			154.85 M		
RM 9 SO 7906	IT I DP 27724	ob6	328°55'00" M			91.02 M		
IT I DP 27724	CUPL I DP 24622	ob37	328°35'00" M			77.23 M		
IT 2 DP 513207	CUPL III DP 24622	ob21	24°31'50" M			174.23 M		
IT X DP 19556	IT 1 DP 538316	ob3	30°31'30" A	DP 538316	0°00'00"	95.12 A	DP 538316	
IT 1 DP 538316	IS I DP 28148	ob12	74°45'40" A	DP 538316	0°00'00"	208.04 A	DP 538316	
IT VII DP 340534	IT I DP 340534	ob18	154°23'20" A	DP 340534	0°00'00"	60.45 A	DP 340534	
IT I DP 340534	IT X DP 19556	ob24	107°34'20" A	DP 340534	0°00'00"	169.70 A	DP 340534	
CUPL III DP 24622	IT III DP 24279	ob11	311°14'40" A	DP 24622	0°00'00"	53.36 A	DP 24622	
IT III DP 24279	IT IV DP 24279	ob13	154°20'20" A	DP 24622	0°00'00"	82.94 A	DP 24622	
IT IV DP 24279	IS V DP 24279	ob25	63°24'10" A	DP 24622	0°00'00"	87.31 A	DP 24622	
IS V DP 24279	CUPL I DP 24622	ob27	338°45'20" A	DP 24622	0°00'00"	34.37 A	DP 24622	
IT VII DP 340534	PEG 1 DP 340534	ob19	142°22'00" A	DP 340534	0°00'00"	5.15 A	DP 340534	
PEG 1 DP 340534	PEG 8 DP 340534	ob28	136°31'00" A	DP 340534	0°00'00"	44.11 A	DP 340534	

Mark and Vector

Survey Number DP 578453

Meridional Circuit Hawkes Bay 2000

From	To	Code	Bearing	Adpt Surv	Bearing Correction	Distance	Adpt Surv	Class
PEG 8 DP 340534	IT I DP 340534	ob30	201°46'00"	A DP 340534	0°00'00"	19.85 A	DP 340534	
IT 2 DP 513207	DISK 14 DP 513207	ob22	146°43'00"	M		19.87 M		
DISK 14 DP 513207	PEG 11 DP 578453	ob31	55°09'40"	A DP 3002	0°00'20"	27.97 A	DP 513207	Class A
PEG 11 DP 578453	PEG (1) DP 19588	ob32	55°09'40"	A DP 3002	0°00'20"	18.16 A	DP 513207	Class A
PEG (1) DP 19588	IT 2 DP 513207	ob33	258°42'00"	M		49.73 M		
PEG (1) DP 19588	PEG 20 DP 578453	ob34	55°08'30"	A DP 19588	0°00'00"	35.58 A	DP 19588	Class A
PEG 20 DP 578453	IT 1 DP 538316	ob35	220°23'00"	A DP 538316	0°00'00"	14.29 A	DP 538316	
PEG 20 DP 578453	DISK (1) DP 27724	ob36	55°08'30"	A DP 19588	0°00'00"	20.17 C		Class A
DISK (1) DP 27724	PEG (2) DP 19588	ob38	55°08'30"	A DP 19588	0°00'00"	9.45 C		
PEG (2) DP 19588	PEG (3) DP 19588	ob40	55°08'30"	A DP 19588	0°00'00"	94.97 A	DP 19588	
PEG (3) DP 19588	IT I DP 27724	ob41	344°45'00"	A DP 27724	0°00'00"	23.71 A	DP 27724	
IT IV DP 24279	DISK 12 DP 578453	ob26	169°40'00"	A DP 24622	0°00'00"	41.07 A	DP 24622	
DISK 12 DP 578453	DISK 18 DP 578453	ob42	332°42'15"	A MISC 2565	0°00'00"	24.60 A	DP 24622	Class A
DISK 18 DP 578453	DISK 15 DP 578453	ob43	332°42'15"	A MISC 2565	0°00'00"	23.30 A	DP 24622	Class A
DISK 15 DP 578453	DISK 13 DP 578453	ob44	332°42'15"	A MISC 2565	0°00'00"	23.30 A	DP 24622	Class A
DISK 13 DP 578453	DISK 14 DP 578453	ob45	332°42'15"	A MISC 2565	0°00'00"	23.30 A	DP 24622	Class A
DISK 14 DP 578453	IT III DP 24279	ob46	0°06'00"	A DP 24622	0°00'00"	31.18 A	DP 24622	
DISK 14 DP 578453	PEG (1) DP 24622	ob47	332°42'15"	A MISC 2565	0°00'00"	23.45 A	DP 24622	Class A
PEG (1) DP 24622	PEG 17 DP 578453	ob48	332°42'15"	A MISC 2565	0°00'00"	15.74 A	DP 24622	Class A
PEG 17 DP 578453	DISK (1) DP 24279	ob49	332°50'00"	A DP 8727	0°00'00"	4.63 A	DP 8727	
DISK (1) DP 24279	IT III DP 24279	ob51	111°04'00"	A DP 24622	0°00'00"	21.59 A	DP 24622	
DISK (1) DP 27724	DISK 12 DP 578453	ob39	332°42'15"	A MISC 2565	0°00'00"	41.58 A	DP 27724	Class A
PEG 17 DP 578453	PEG (1) DP 8727	ob50	242°50'00"	A DP 8727	0°00'00"	22.41 A	DP 8727	Class A
PEG (1) DP 8727	PEG 19 DP 578453	ob52	332°50'00"	A DP 8727	0°00'00"	31.25 A	DP 8727	Class A

Mark and Vector

Survey Number DP 578453

Meridional Circuit Hawkes Bay 2000

From	To	Code	Bearing	Adpt Surv	Bearing Correction	Distance	Adpt Surv	Class
PEG 19 DP 578453	IT II DP 8727	ob53	312°45'00"	M		5.04 M		
PEG 1 DP 340534	PEG 10 DP 578453	ob29	39°21'11"	C		141.76 A	DP 3931	
PEG 10 DP 578453	PEG 19 DP 578453	ob54	39°21'11"	C		85.83 C		Class A
PEG 10 DP 578453	DISK 14 DP 513207	ob55	152°40'30"	A	DP 3931	0°00'00"	185.92 A	DP 3931 Class A
IT 1 DP 578453	PEG 17 DP 578453	ob58	353°57'00"	M		17.90 M		
IT 1 DP 578453	PEG (1) DP 24622	ob59	54°27'00"	M		6.56 M		
IT 1 DP 578453	PEG (1) DP 8727	ob60	289°09'00"	M		23.11 M		
IT 1 DP 578453	DISK 14 DP 578453	ob61	136°37'00"	M		23.43 M		
IT 1 DP 578453	DISK 13 DP 578453	ob62	144°38'00"	M		46.27 M		
IT 2 DP 578453	DISK 15 DP 578453	ob64	343°41'00"	M		24.04 M		
IT 2 DP 578453	DISK 18 DP 578453	ob65	58°57'00"	M		4.59 M		
IT 2 DP 578453	DISK 12 DP 578453	ob66	142°02'00"	M		24.73 M		
IT 3 DP 578453	DISK (1) DP 27724	ob69	89°51'00"	M		8.10 M		
IT 3 DP 578453	PEG 20 DP 578453	ob70	216°19'00"	M		14.28 M		
IT 2 DP 513207	PEG 11 DP 578453	ob23	91°04'00"	M		33.86 M		
IS 105 SO 569723	PEG 10 DP 578453	ob16	127°03'00"	M		9.99 M		

Mark Name	Mark Condition	Description
CUPL I DP 24622		flush in channel
CUPL III DP 24622		flush in channel
DISK (1) DP 27724		in conc nib wall
DISK 12 DP 578453		in top fence rail
DISK 13 DP 578453		in conc fence footing
DISK 14 DP 513207		in top of conc wall
DISK 14 DP 578453		in top of colorsteel fence
DISK 15 DP 578453		in conc post footing
DISK 18 DP 578453		in conc fence footing
IS I DP 28148		flush behind footpath
IT II DP 8727		0.25m deep

Mark and Vector

Survey Number DP 578453
Meridional Circuit Hawkes Bay 2000

Mark Name	Mark Condition	Description
PEG (1) DP 19588		at base of fence
PEG (1) DP 24622		set flush in conc fence footing
PEG (1) DP 8727		at base of conc fence footing
PEG 10 DP 578453		at base of fence
PEG 11 DP 578453		Peg at base of fence. Reinstates PEG 15 DP 513207.
PEG 17 DP 578453		at base of fence
PEG 19 DP 578453		at base of conc fence post
PEG 20 DP 578453		at base of fence
RM 9 SO 7906		plaque under lid
SS XXI SO 4612		(CR12)

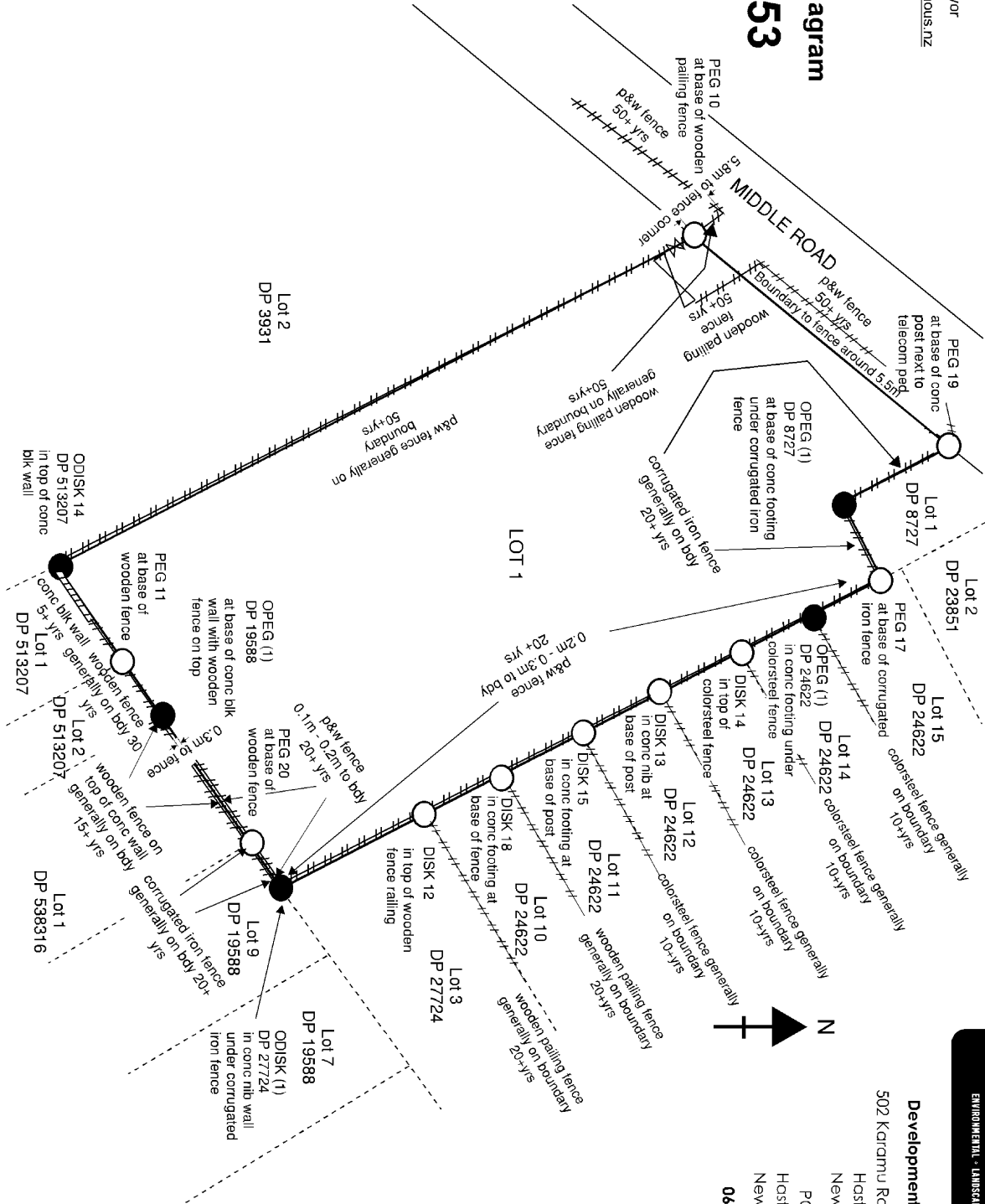
*** End of Report ***

Prepared by: Karl Carew
 Licensed Cadastral Surveyor
 karl.carew@developmentnous.nz

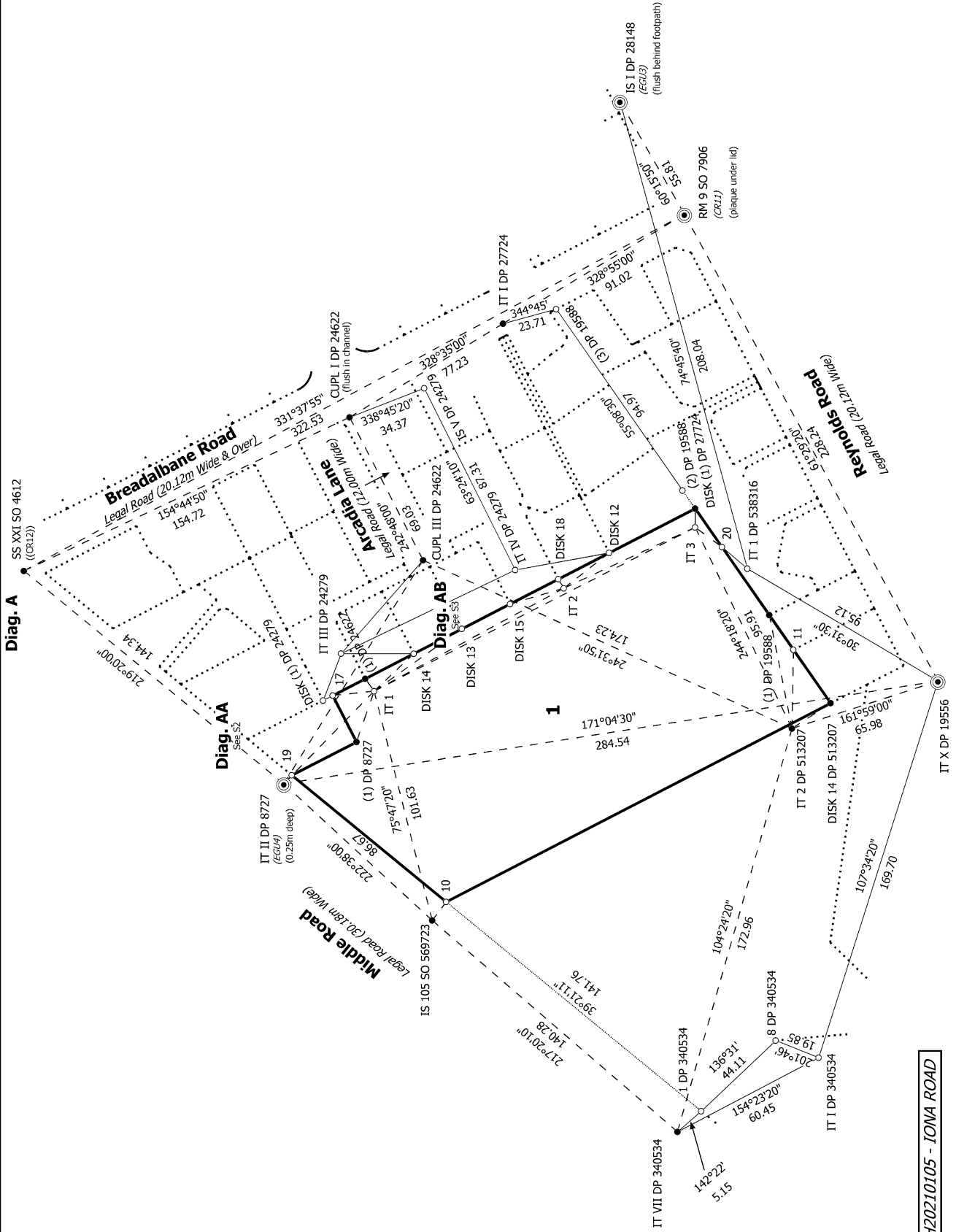
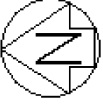
20 July 2022

Occupation Diagram

DP 578453



Development Nous Ltd
 502 Karamu Road North
 Hastings 4122
 New Zealand
 PO Box 385
 Hastings 4156
 New Zealand
06 876 2159



FILE REF : H20210105 - IONA ROAD

Land District: Hawkes Bay

Digitally Generated Plan

Generated on: 12/05/2023 3:03pm Page 8 of 11

LOT 1 BEING PART OF SUBURBAN SECTION 23 HAVELOCK

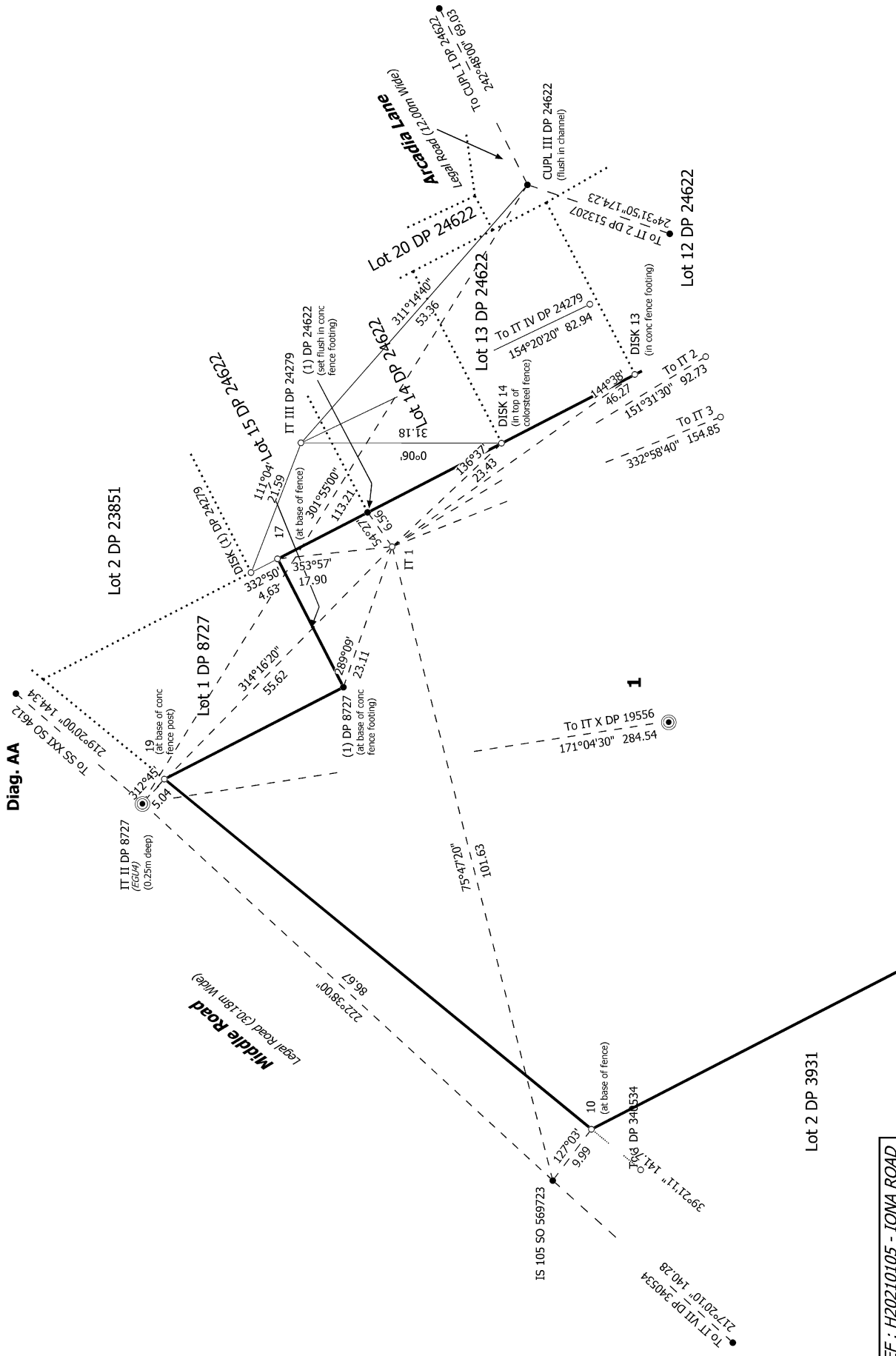
Surveyor: Karl Robert Carew
 Firm: Development Nous Limited
 Date of Survey: 20/07/2022

Record of Survey
 DP 578453

Deposited on: 2/02/2023



Diag. AA



FILE REF : H20210105 - IOMA ROAD

S 2/3

Land District: Hawkes Bay
 Digitally Generated Plan
 Generated on: 12/05/2023 3:03pm Page 9 of 11

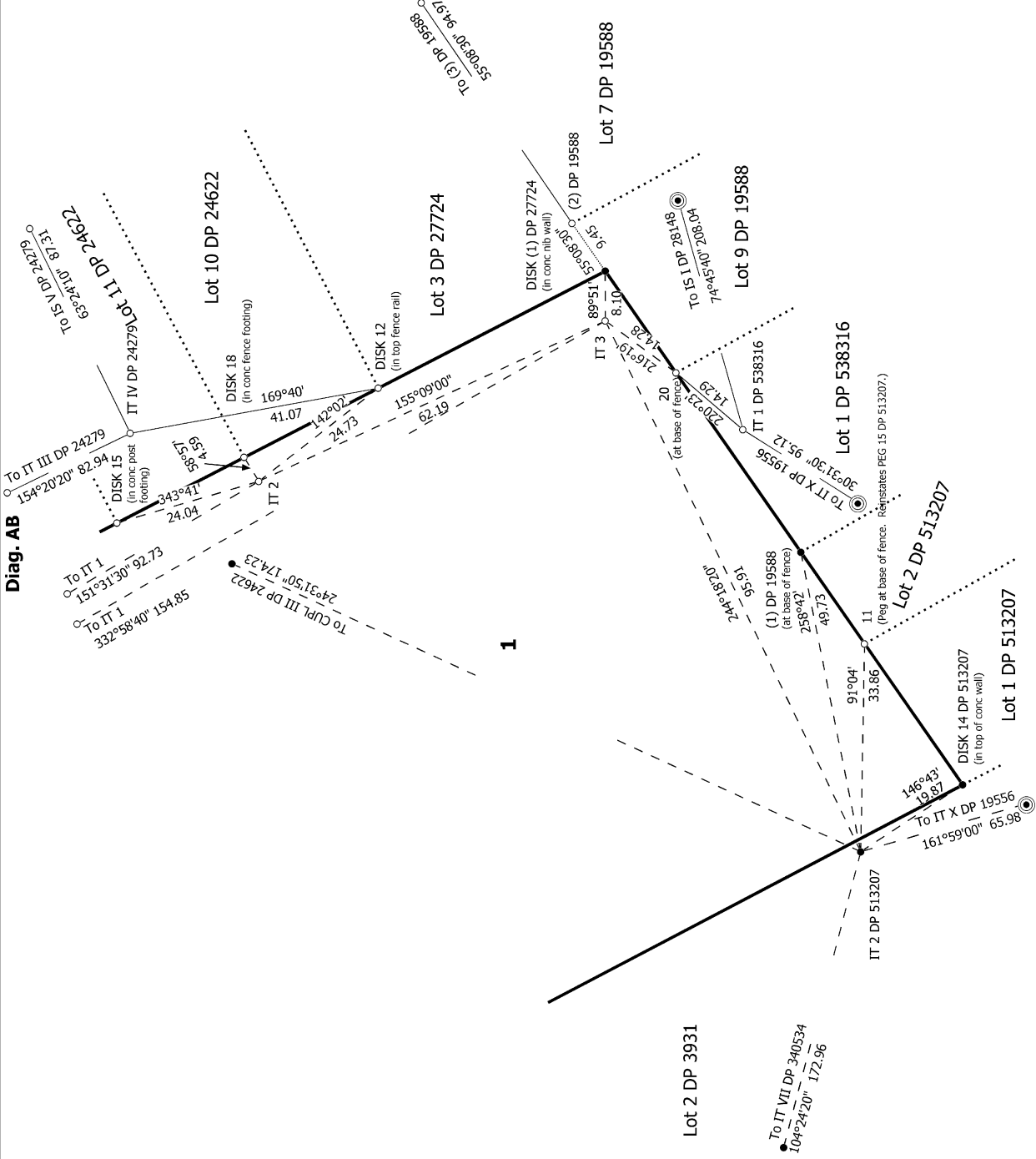
LOT 1 BEING PART OF SUBURBAN SECTION 23 HAVELOCK

Surveyor: Karl Robert Carew
 Firm: Development Nous Limited
 Date of Survey: 20/07/2022

Record of Survey
 DP 578453
 Deposited on: 2/02/2023



Diag. AB



FILE REF : H20210105 - IONA ROAD

Land District: Hawkes Bay

Digitally Generated Plan

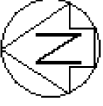
Generated on: 12/05/2023 3:03pm Page 10 of 11

LOT 1 BEING PART OF SUBURBAN SECTION 23 HAVELOCK

Surveyor: Karl Robert Carew
Firm: Development Nous Limited
Date of Survey: 20/07/2022

Record of Survey
DP 578453
Deposited on: 2/02/2023

S 3/3



Diag. A



FILE REF : H20210105 - IONA ROAD

T 1/1

Land District: Hawkes Bay

Digitally Generated Plan

Generated on: 12/05/2023 3:03pm Page 11 of 11

LOT 1 BEING PART OF SUBURBAN SECTION 23 HAVELOCK

Surveyor: Karl Robert Carew
Firm: Development Nous Limited
Date of Survey: 20/07/2022

Record of Survey
DP 578453

Deposited on: 2/02/2023