



Record of Survey - DP 579320

Survey Number DP 579320
Surveyor Reference N220024.00 214 Havelock Road
Surveyor Jordan Geoffrey Dyer
Survey Firm Definition Surveying Limited
Surveyor Declaration I Jordan Geoffrey Dyer, being a licensed cadastral surveyor, certify that--
(a) this dataset provided by me and its related survey are accurate, correct and in accordance with the Cadastral Survey Act 2002 and Cadastral Survey Rules 2021; and
(b) the survey was undertaken by me or under my personal direction.
Declared on 01 Sep 2022 08:44 AM

Survey Details

Dataset Description Lots 1 & 2 Being a Subdivision of Part Lot 2 DP 8367 (north-western-most)
Purpose LT Subdivision
Status Deposited **Type** Survey
Land District Hawkes Bay **Survey Class** Class A
Meridional Circuit Hawkes Bay 2000 **Vertical Datum** None

Survey Dates

Surveyed Date 07/07/2022 **Certified Date** 01/09/2022
Submitted Date 01/09/2022 08:44:29 **Survey Approval Date** 01/09/2022
Deposit Date 27/09/2022

Referenced Surveys

Survey Number	Land District	Bearing Correction
DP 8367	Hawkes Bay	0°00'00"
SO 499553	Hawkes Bay	0°00'00"

Territorial Authorities

Hastings District

Comprised In

RT HB135/238

Created Parcels

Parcels	Parcel Intent	Area	RT Reference
Area A Deposited Plan 579320	Easement		
Lot 1 Deposited Plan 579320	Fee Simple Title	0.0766 Ha	1081251
Lot 2 Deposited Plan 579320	Fee Simple Title	0.9250 Ha	1081252
Area B Deposited Plan 579320	Easement		
Area C Deposited Plan 579320	Easement		
Area D Deposited Plan 579320	Easement		
Area E Deposited Plan 579320	Easement		
Total Area		1.0016 Ha	

Mark and Vector

Survey Number DP 579320

Meridional Circuit Hawkes Bay 2000

From	To	Code	Bearing	Adpt Surv	Bearing Correction	Distance	Adpt Surv	Class
372 SO 4954	AP 50 DP 579320	ob0	134°28'10" M			462.11 M		
AP 50 DP 579320	IS 51 DP 579320	ob3	39°55'00" M			182.33 M		
IS 51 DP 579320	372 SO 4954	ob11	292°22'20" M			483.13 M		
AP 50 DP 579320	AP 3B SO 499553	ob4	202°11'00" M			20.16 M		
AP 50 DP 579320	AP 4 SO 499553	ob5	291°53'00" M			48.64 M		
AP 4 SO 499553	AP 3B SO 499553	ob10	134°26'35" A	SO 499553	0°00'00"	52.55 A	SO 499553	
372 SO 4954	AP 4 SO 499553	ob1	137°02'00" M			417.62 M		
IS 51 DP 579320	IS VIII DP 8367	ob12	252°05'00" M			85.21 M		
IS VIII DP 8367	AP 4 SO 499553	ob18	220°19'20" M			125.26 M		
IS 51 DP 579320	IT VII DP 579320	ob13	359°42'30" M			55.54 M		
IT VII DP 579320	IS VIII DP 8367	ob21	224°39'30" M			114.93 M		
IS 51 DP 579320	IS VI DP 8367	ob14	90°38'50" M			55.37 M		
IS VI DP 8367	IT VII DP 579320	ob22	315°16'35" M			79.08 M		
IS 51 DP 579320	PEG (26) DP 8367	ob15	0°42'50" M			58.43 M		
PEG (26) DP 8367	IT VII DP 579320	ob23	199°06'00" A	DP 8367	0°00'00"	3.09 A	DP 8367	
IS VIII DP 8367	IS IX DP 8367	ob19	224°39'30" A	DP 8367	0°00'00"	51.47 A	DP 8367	
IS IX DP 8367	IS I DP 8367	ob24	224°39'30" A	DP 8367	0°00'00"	68.40 A	DP 8367	
IS I DP 8367	IS III DP 8367	ob26	134°32'54" A	DP 8367	0°00'00"	39.43 A	DP 8367	
IS III DP 8367	IS IV DP 8367	ob27	134°32'54" A	DP 8367	0°00'00"	85.01 A	DP 8367	
IS IV DP 8367	PEG V DP 8367	ob29	44°33'05" A	DP 8367	0°00'00"	233.20 A	DP 8367	
PEG V DP 8367	IS VI DP 8367	ob30	315°16'35" A	DP 8367	0°00'00"	44.92 A	DP 8367	
372 SO 4954	405 SO 4954	ob2	228°12'54" A	SO 499553	0°00'00"	13.05 A	SO 499553	
405 SO 4954	IS I DP 8367	ob32	134°32'54" A	DP 8367	0°00'00"	408.56 A	DP 8367	
IS VIII DP 8367	DISK 23 DP 579320	ob20	186°03'05" A	DP 8367	0°00'00"	63.01 A	DP 8367	
DISK 23 DP 579320	IS IX DP 8367	ob33	311°24'30" A	DP 8367	0°00'00"	39.38 A	DP 8367	
IS III DP 8367	PEG (20) DP 8367	ob28	44°40'25" A	DP 8367	0°00'00"	20.26 A	DP 8367	
PEG (20) DP 8367	UNMK 26 DP 579320	ob36	134°32'54" A	DP 8367	0°00'00"	2.00 C		Class A
UNMK 26 DP 579320	PEG 32 DP 579320	ob52	134°32'54" A	DP 8367	0°00'00"	9.24 C		Class A
PEG 32 DP 579320	PEG 21 DP 579320	ob38	134°32'54" A	DP 8367	0°00'00"	4.00 C		Class A

Mark and Vector

Survey Number DP 579320

Meridional Circuit Hawkes Bay 2000

From	To	Code	Bearing	Adpt Surv	Bearing Correction	Distance	Adpt Surv	Class
PEG 21 DP 579320	PEG (2) DP 8367	ob40	134°32'54"	A DP 8367	0°00'00"	72.18 C		
PEG (2) DP 8367	IS IV DP 8367	ob42	231°27'30"	A DP 8367	0°00'00"	20.41 A DP 8367		
PEG (20) DP 8367	DISK 23 DP 579320	ob37	44°31'00"	A DP 8367	0°00'00"	50.29 A DP 8367		Class A
PEG V DP 8367	PEG 1 SO 523696	ob31	78°40'40"	A DP 8367	0°00'00"	4.07 A DP 8367		
PEG 1 SO 523696	PEG 28 DP 579320	ob43	314°59'50"	A DP 8367	0°00'00"	72.18 C		
PEG 28 DP 579320	PEG (26) DP 8367	ob44	314°59'50"	A DP 8367	0°00'00"	55.43 C		Class A
PEG 21 DP 579320	PEG 29 DP 579320	ob41	44°30'15"	C		50.29 C		Class A
PEG 29 DP 579320	UNMK (30) T 104041	ob45	44°30'15"	C		0.30 C		Class A
UNMK (30) T 104041	PEG 28 DP 579320	ob46	44°30'15"	C		166.29 C		Class A
IS IX DP 8367	PEG (24) DP 8367	ob25	21°33'50"	A DP 8367	0°00'00"	2.34 A DP 8367		
PEG (24) DP 8367	UNMK (25) DP 8367	ob47	134°32'54"	A DP 8367	0°00'00"	25.15 A DP 8367		Class A
UNMK (25) DP 8367	DISK 23 DP 579320	ob49	134°32'54"	A DP 8367	0°00'00"	15.09 A DP 8367		Class A
PEG (24) DP 8367	PEG (26) DP 8367	ob48	44°31'00"	A DP 8367	0°00'00"	167.02 A DP 8367		Class A
DISK 23 DP 579320	UNMK 38 DP 579320	ob34	134°32'54"	C		2.00 C		Class A
UNMK 38 DP 579320	UNMK 37 DP 579320	ob61	134°32'54"	C		6.08 C		Class A
UNMK 37 DP 579320	PEG 31 DP 579320	ob59	134°32'54"	C		3.14 C		Class A
PEG 31 DP 579320	PEG 29 DP 579320	ob51	134°32'54"	C		4.00 C		Class A
AP 50 DP 579320	PEG 31 DP 579320	ob6	40°51'00"	M		56.99 M		
AP 50 DP 579320	PEG 32 DP 579320	ob7	15°38'00"	M		7.52 M		
AP 50 DP 579320	PEG 21 DP 579320	ob8	47°42'00"	M		6.59 M		
AP 50 DP 579320	PEG 29 DP 579320	ob9	44°52'40"	M		56.88 M		
IS 51 DP 579320	DISK 23 DP 579320	ob16	224°37'40"	M		124.87 M		
IS 51 DP 579320	PEG 28 DP 579320	ob17	64°14'00"	M		44.33 M		
PEG 32 DP 579320	PEG 31 DP 579320	ob39	44°30'15"	C		50.29 C		Class A

Mark and Vector

Survey Number DP 579320

Meridional Circuit Hawkes Bay 2000

From	To	Code	Bearing	Adpt Surv	Bearing Correction	Distance	Adpt Surv	Class
UNMK (25) DP 8367	UNMK (33) T 104041	ob50	44°26'00"	C		0.30 C		Class A
UNMK (33) T 104041	UNMK 34 DP 579320	ob54	134°32'54"	A DP 8367	0°00'00"	15.09 C		Class A
UNMK 34 DP 579320	UNMK 35 DP 579320	ob55	134°32'54"	A DP 8367	0°00'00"	8.08 C		Class A
UNMK 35 DP 579320	UNMK (30) T 104041	ob57	134°32'54"	A DP 8367	0°00'00"	7.15 C		Class A
DISK 23 DP 579320	UNMK 34 DP 579320	ob35	44°31'00"	C		0.30 C		Class A
UNMK 34 DP 579320	UNMK 36 DP 579320	ob56	44°31'00"	C		6.70 C		Class A
UNMK 36 DP 579320	UNMK 35 DP 579320	ob58	174°12'00"	C		10.49 C		Class A
UNMK 37 DP 579320	UNMK 35 DP 579320	ob60	44°31'00"	C		0.30 C		Class A
UNMK 26 DP 579320	UNMK 38 DP 579320	ob53	44°31'00"	C		50.29 C		Class A

Mark Name	Mark Condition	Description
372 SO 4954		Bullet casing set in conc, ~0.1 down under CI cvr.
AP 3B SO 499553		In conc footpath.
AP 4 SO 499553		In conc footpath.
AP 50 DP 579320		In conc footpath.
DISK 23 DP 579320		Peg DP 8367 reinstated.
IS 51 DP 579320		~0.3 down in grass paddock, ~2.3 SW of fce.
IS VI DP 8367		~0.4 down in grass paddock, ~1.5 NW of wooden gate post.
IS VIII DP 8367		~0.3 down in grass paddock, ~0.4 SE of fce.
IT VII DP 579320		Renews Opeg VII DP 8367. ~0.4 down in grass paddock, ~1m SE of fce.
PEG (2) DP 8367	Searched For and Not Found	

*** End of Report ***

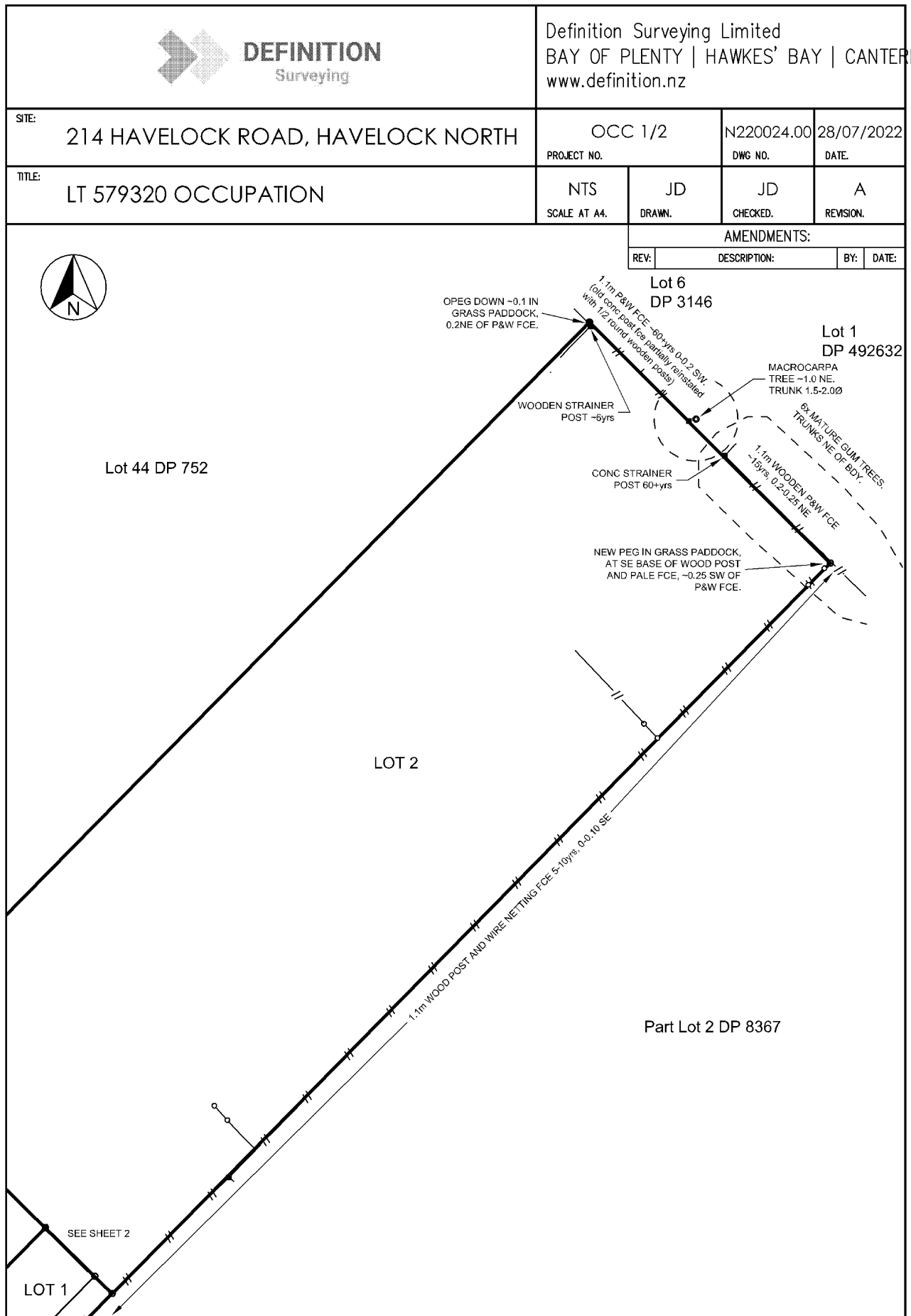
Land Registration District: Hawkes Bay
 Survey Number: LT 579320
 TA: Hastings District Council

Memorandum of Easements			
Purpose	Shown	Burdened Land (Servient Tenement)	Benefited Land (Dominant Tenement)
Right of Way Right to drain water, sewage, stormwater Right to convey electricity, telecommunications, water, gas	B	Lot 1 Hereon	Lot 2 Hereon
Right to convey water, telecommunications	C	Lot 1 Hereon	Lot 2 Hereon
Right to drain sewage	D, E	Lot 2 Hereon	Lot 1 Hereon

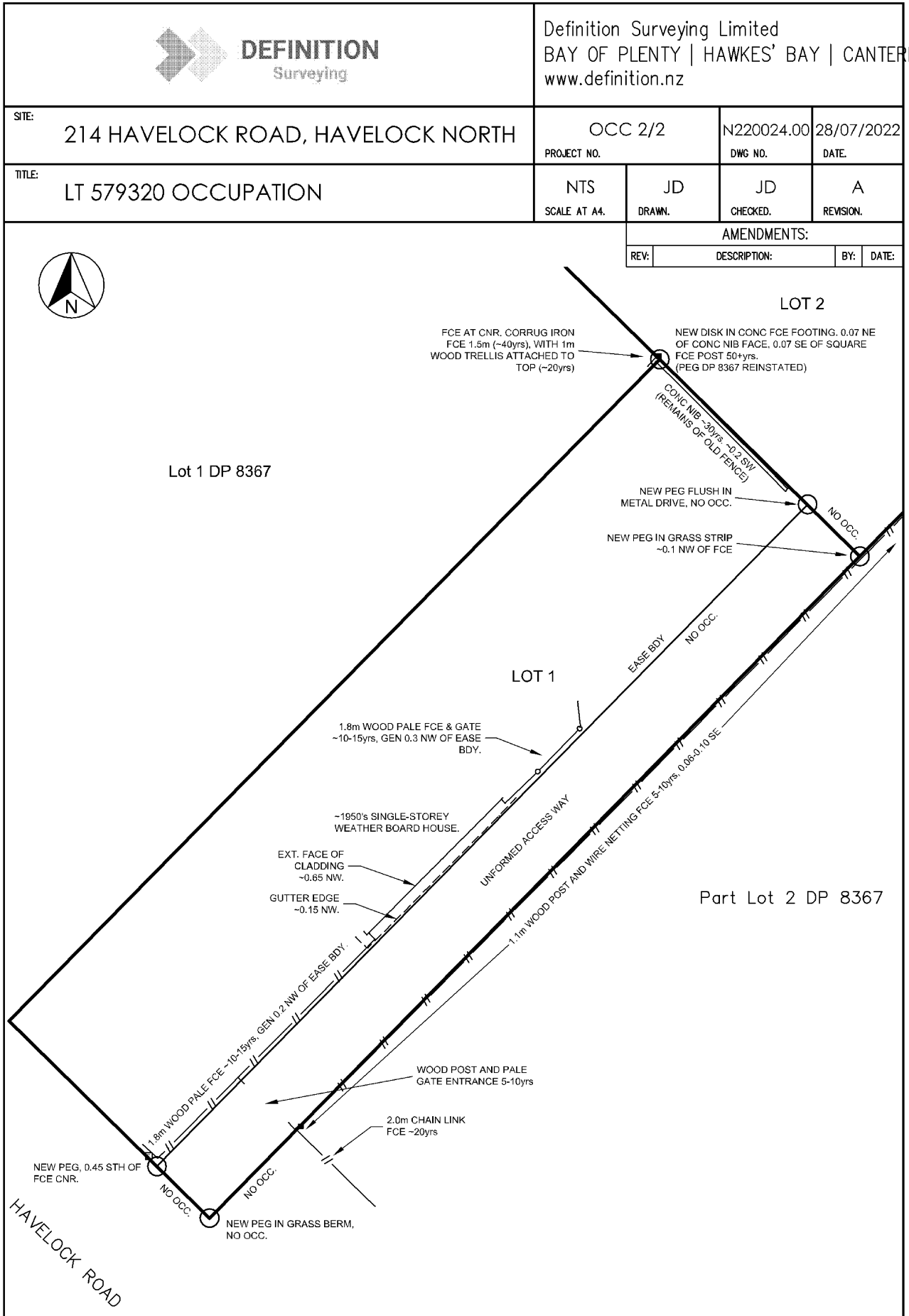
Schedule of Easements in Gross			
Purpose	Shown	Burdened Land (Servient Tenement)	Grantee
Right to convey telecommunications	B, C	Lot 1 Hereon	Chorus New Zealand Limited

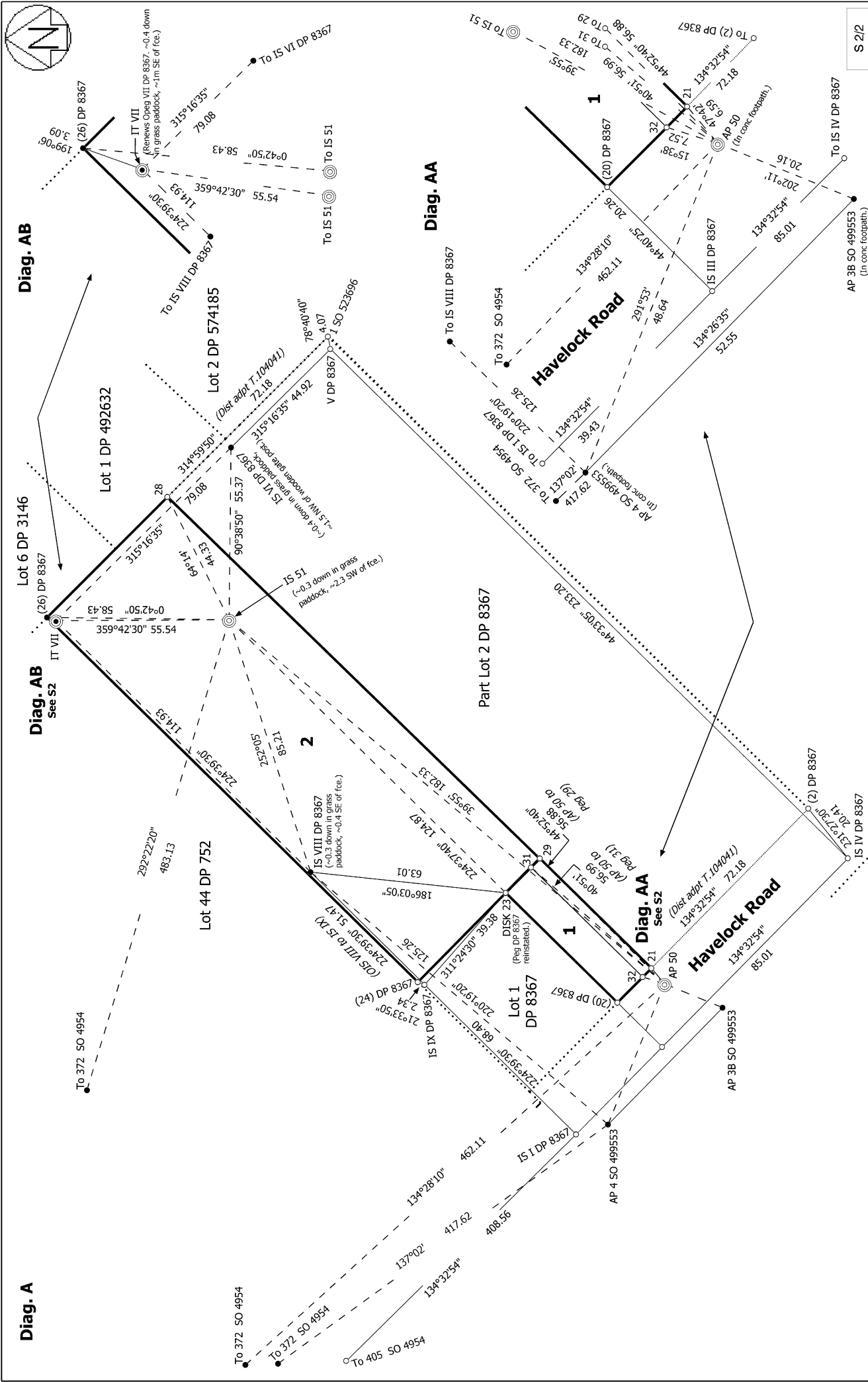
Schedule of Existing Easements			
Purpose	Shown	Burdened Land (Servient Tenement)	Creating Document Reference
Water Pipeline Rights / Right to convey water	A (<i>centreline easement, width unknown</i>)	Lot 2 Hereon	Transfer 104041

Occupation Diagram

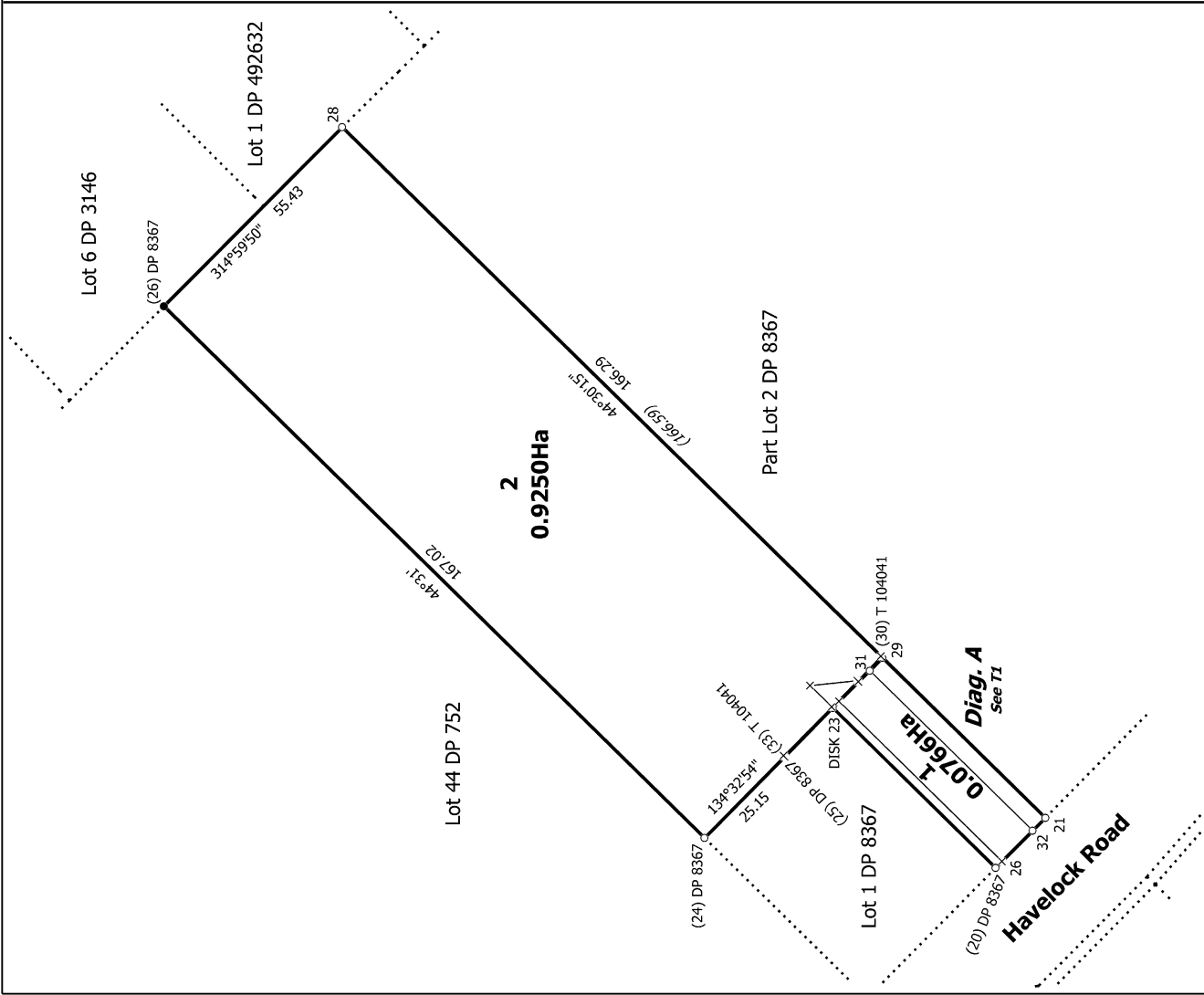
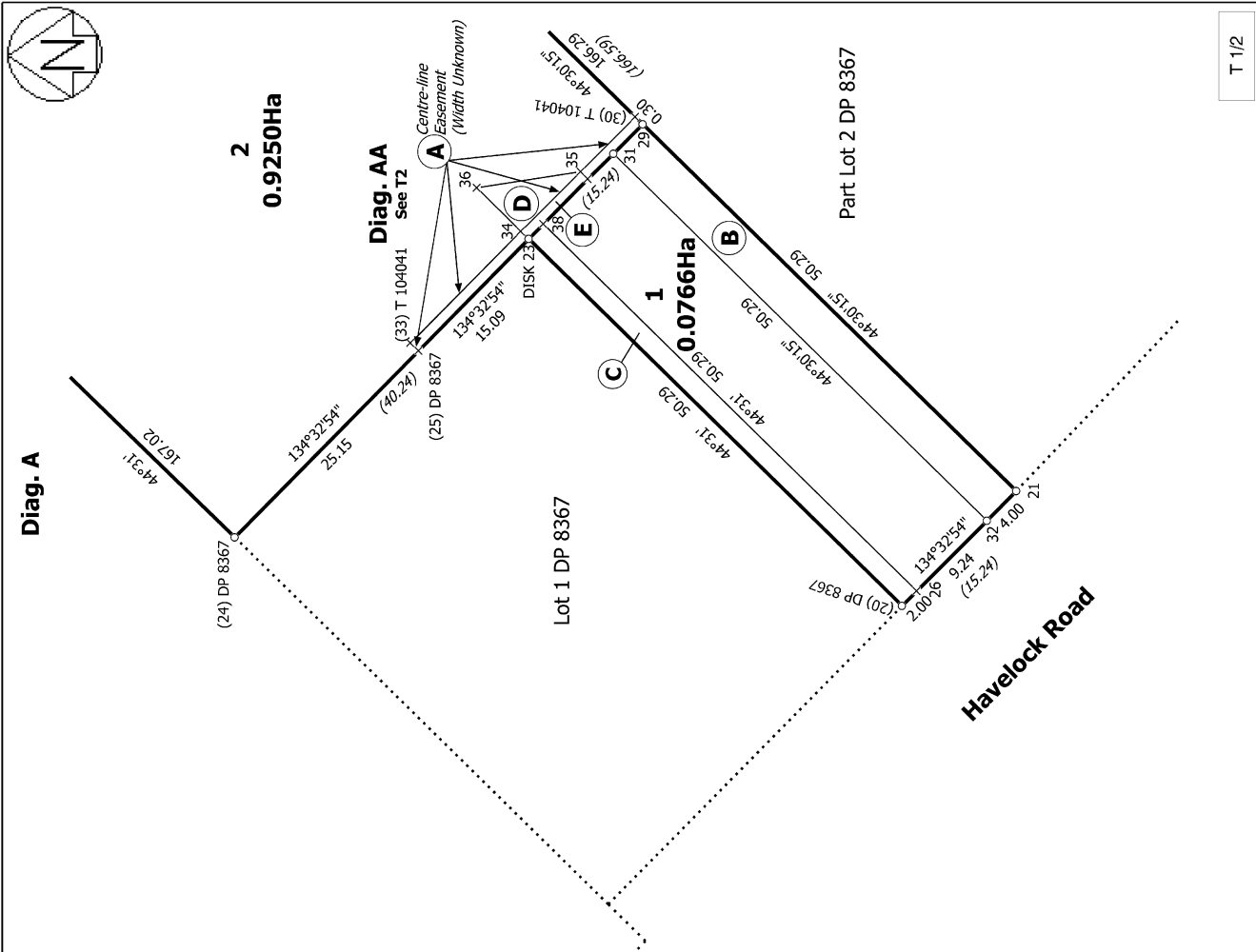


Occupation Diagram

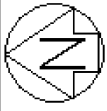




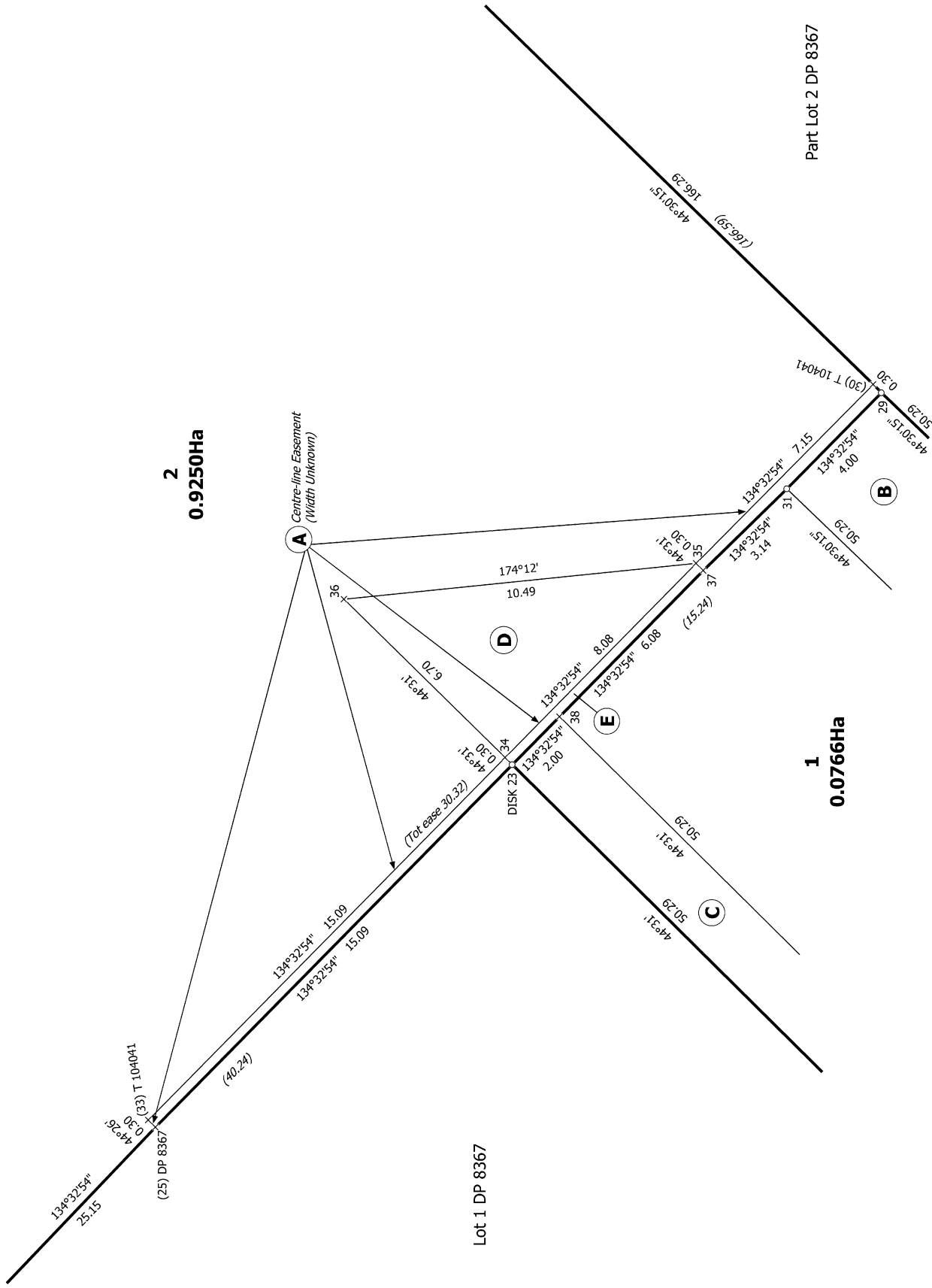
Land District: Hawkes Bay	Record of Survey DP 579320	Deposited on: 27/09/2022
Digitally Generated Plan Generated on: 04/10/2022 3:28pm Page 9 of 11	Surveyor: Jordan Geoffrey Dyer Firm: Definition Surveying Limited Date of Survey: 7/07/2022	Lots 1 & 2 Being a Subdivision of Part Lot 2 DP 8367 (north-western-most)



T 1/2			
Land District: Hawkes Bay	Lots 1 & 2 Being a Subdivision of Part Lot 2 DP 8367 (north-western-most)	Record of Survey DP 579320	Deposited on: 27/09/2022
Digitally Generated Plan Generated on: 04/10/2022 3:28pm Page 10 of 11		Surveyor: Jordan Geoffrey Dyer Firm: Definition Surveying Limited Date of Survey: 7/07/2022	



Diag. AA



T 2/2

<p>Land District: Hawkes Bay</p> <p>Digitally Generated Plan</p> <p>Generated on: 04/10/2022 3:28pm Page 11 of 11</p>	<p>Lots 1 & 2 Being a Subdivision of Part Lot 2 DP 8367 (north-western-most)</p> <p>Surveyor: Jordan Geoffrey Dyer Firm: Definition Surveying Limited Date of Survey: 7/07/2022</p>	<p>Record of Survey DP 579320</p> <p>Deposited on: 27/09/2022</p>
--	--	---