

Record of Survey - DP 579449

Survey Number DP 579449
Surveyor Reference 12854 - Daniels
Surveyor Timothy Brian Ronke
Survey Firm Grant & Cooke Surveyors Ltd
Surveyor Declaration I Timothy Brian Ronke, being a licensed cadastral surveyor, certify that--
 (a) this dataset provided by me and its related survey are accurate, correct and in accordance with the Cadastral Survey Act 2002 and Cadastral Survey Rules 2021; and
 (b) the survey was undertaken by me or under my personal direction.
 Declared on 22 Sep 2022 04:34 PM

Survey Details

Dataset Description Lots 1 - 3 being a Subdivision of Lot 7 and Lot 8 Block VIII DP 2702 and Easement over Lot 2 DP 345280
Purpose LT Subdivision
Status Deposited **Type** Survey
Land District Gisborne **Survey Class** Class A
Meridional Circuit Poverty Bay 2000 **Vertical Datum** None

Survey Dates

Surveyed Date 11/07/2022 **Certified Date** 22/09/2022
Submitted Date 22/09/2022 16:34:15 **Survey Approval Date** 29/09/2022
Deposit Date 07/11/2022

Referenced Surveys

Survey Number	Land District	Bearing Correction
SO 7756	Gisborne	0°00'00"
SO 8531	Gisborne	0°00'00"
DP 2702	Gisborne	0°00'40"
DP 345280	Gisborne	0°00'00"

Territorial Authorities

Gisborne District

Comprised In

RT GS117/57
 RT GS108/215
 RT 185616

Created Parcels

Parcels	Parcel Intent	Area	RT Reference
Lot 2 Deposited Plan 579449	Fee Simple Title	0.0833 Ha	1079616
Lot 3 Deposited Plan 579449	Fee Simple Title	0.0834 Ha	1079617
Area A Deposited Plan 579449	Easement		
Area B Deposited Plan 579449	Easement		
	Erosion		



Record of Survey - DP 579449

Created Parcels

Parcels	Parcel Intent	Area	RT Reference
Lot 1 Deposited Plan 579449	Erosion Fee Simple Title	0.2065 Ha	1079615
Total Area		<u>0.3732 Ha</u>	

Mark and Vector

Survey Number DP 579449

Meridional Circuit Poverty Bay 2000

From	To	Code	Bearing	Adpt Surv	Bearing Correction	Distance	Adpt Surv	Class
IT SO 7756	IT I DP 345280	ob2	184°11'30" M			147.23 M		
IT I DP 345280	IS II DP 345280	ob4	191°29'10" M			19.67 M		
IS II DP 345280	AP 1 DP 496164	ob7	194°33'45" M			58.09 M		
AP 1 DP 496164	IS 1 SO 540654	ob9	184°19'00" M			139.56 M		
IS 1 SO 540654	IS VI DP 345280	ob10	335°51'30" M			234.78 M		
IS VI DP 345280	IS 3 DP 579449	ob11	35°03'50" M			46.93 M		
IS 3 DP 579449	IT SO 7756	ob14	45°00'00" M			153.95 M		
IS VI DP 345280	IT V DP 345280	ob12	100°12'00" A	DP 345280	0°00'00"	36.91 A	DP 345280	
IT V DP 345280	IS IV DP 345280	ob0	98°16'00" A	DP 345280	0°00'00"	27.97 A	DP 345280	
IS IV DP 345280	IS II DP 345280	ob1	98°16'00" A	DP 345280	0°00'00"	57.72 A	DP 345280	
IT I DP 345280	IS 1 DP 579449	ob5	300°10'40" M			44.02 M		
IS 1 DP 579449	IS 2 DP 579449	ob18	208°12'50" M			20.10 M		
IS 2 DP 579449	IS II DP 345280	ob19	118°30'10" M			49.65 M		
IT SO 7756	IS III SO 7756	ob3	180°59'00" A	SO 7756	0°00'00"	75.36 A	SO 7756	
IS III SO 7756	IS II SO 7756	ob26	284°31'00" A	SO 7756	0°00'00"	15.43 A	SO 7756	
IS II SO 7756	IT I SO 7756	ob27	284°31'00" A	SO 7756	0°00'00"	65.74 A	SO 7756	
IT I SO 7756	IT SO 7756	ob29	55°27'00" A	SO 7756	0°00'00"	96.98 A	SO 7756	
IS II SO 7756	PEG SO 7756	ob28	164°34'30" A	SO 7756	0°00'00"	9.91 A	SO 7756	
IT I DP 345280	PEG SO 7756	ob6	357°32'40" M			65.85 M		
IS II DP 345280	PEG DP 345280	ob8	298°27'00" A	DP 345280	0°00'00"	11.28 A	DP 345280	
PEG DP 345280	DISK 5 DP 579449	ob30	7°51'40" A	DP 2702	0°00'40"	3.50 C		Class A
DISK 5 DP 579449	PEG (3) DP 2702	ob32	7°51'40" A	DP 2702	0°00'40"	16.62 C		Class A
PEG (3) DP 2702	PEG 4 DP 579449	ob34	7°51'40" A	DP 2702	0°00'40"	1.77 C		Class A
PEG 4 DP 579449	PEG (2) DP 2702	ob36	7°51'40" A	DP 2702	0°00'40"	18.35 C		Class A
PEG (2) DP 2702	PEG (7) DP 2702	ob38	7°51'40" A	DP 2702	0°00'40"	20.12 A	DP 2702	
PEG (7) DP 2702	PEG SO 7756	ob39	7°51'40" A	DP 2702	0°00'40"	20.12 A	DP 2702	
PEG (3) DP 2702	PEG X DP 2702	ob35	277°51'40" A	DP 2702	0°00'40"	68.61 A	DP 2702	
PEG X DP 2702	IT DP 2702	ob40	321°36'40" A	DP 2702	0°00'40"	29.09 A	DP 2702	
IT DP 2702	PEG XI DP 2702	ob43	321°36'40" A	DP 2702	0°00'40"	29.09 A	DP 2702	
PEG XI DP 2702	PEG (5) DP 2702	ob46	41°24'40" A	DP 2702	0°00'40"	24.14 A	DP 2702	
PEG (5) DP 2702	PEG (7) DP 2702	ob47	41°24'40" A	DP 2702	0°00'40"	24.14 A	DP 2702	
PEG (7) DP 2702	PEG XII DP 2702	ob48	41°24'40" A	DP 2702	0°00'40"	24.14 A	DP 2702	
PEG XII DP 2702	PEG (6) DP 2702	ob49	1°24'40" A	DP 2702	0°00'40"	20.25 A	DP 2702	
PEG (6) DP 2702	PEG (4) DP 2702	ob50	1°24'40" A	DP 2702	0°00'40"	20.25 A	DP 2702	
PEG (4) DP 2702	PEG (2) SO 7756	ob51	97°51'40" A	DP 2702	0°00'40"	24.97 A	DP 2702	
PEG (2) SO 7756	IT SO 7756	ob52	96°03'40" A	SO 7756	0°00'00"	52.64 A	SO 7756	

Mark and Vector

Survey Number DP 579449

Meridional Circuit Poverty Bay 2000

From	To	Code	Bearing	Adpt Surv	Bearing Correction	Distance	Adpt Surv	Class
IS VI DP 345280	PEG VIa DP 345280	ob13	82°08'00"	A DP 345280	0°00'00"	6.86 A	DP 345280	
IT DP 2702	UNMK (1) DP 2702	ob44	97°51'40"	A DP 2702	0°00'40"	14.69 A	DP 2702	
UNMK (1) DP 2702	UNMK 28 DP 579449	ob45	97°51'40"	A DP 2702	0°00'40"	3.44 C		Class AD
UNMK 28 DP 579449	DISK 9 DP 579449	ob72	97°51'40"	A DP 2702	0°00'40"	26.07 C		Class AD
DISK 9 DP 579449	PEG (2) DP 2702	ob54	97°51'40"	A DP 2702	0°00'40"	45.43 C		Class A
PEG DP 345280	UNMK 14 DP 579449	ob31	277°52'00"	A DP 345280	0°00'00"	36.47 C		Class A
UNMK 14 DP 579449	UNMK 15 DP 579449	ob65	277°52'00"	A DP 345280	0°00'00"	2.00 C		Class A
UNMK 15 DP 579449	UNMK 12 DP 579449	ob67	277°52'00"	A DP 345280	0°00'00"	8.96 C		Class A
UNMK 12 DP 579449	PEG IVa DP 345280	ob64	277°52'00"	A DP 345280	0°00'00"	6.27 C		Class A
PEG IVa DP 345280	PEG IX DP 2702	ob42	277°52'00"	A DP 345280	0°00'00"	36.01 A	DP 345280	Class A
PEG IX DP 2702	PEG VIa DP 345280	ob55	277°52'00"	A DP 345280	0°00'00"	15.70 A	DP 345280	Class A
DISK 5 DP 579449	UNMK 13 DP 579449	ob33	277°52'00"	C		36.48 C		Class A
UNMK 13 DP 579449	DISK 6 DP 579449	ob62	277°52'00"	C		7.46 C		Class A
DISK 6 DP 579449	DISK 7 DP 579449	ob56	322°52'00"	C		2.12 C		Class A
DISK 7 DP 579449	PEG 8 DP 579449	ob57	7°52'00"	C		16.88 C		Class A
PEG 8 DP 579449	UNMK 10 DP 579449	ob58	7°52'00"	C		4.00 C		Class A
UNMK 10 DP 579449	DISK 9 DP 579449	ob59	7°52'00"	C		14.35 C		Class A
PEG 4 DP 579449	PEG 8 DP 579449	ob37	277°51'00"	C		45.43 C		Class A
UNMK 10 DP 579449	UNMK 11 DP 579449	ob60	277°52'00"	C		2.00 C		Class A
UNMK 11 DP 579449	UNMK 12 DP 579449	ob61	187°52'00"	C		25.89 C		Class A
UNMK 13 DP 579449	UNMK 14 DP 579449	ob63	187°52'00"	C		3.50 C		Class A
UNMK 14 DP 579449	UNMK 16 DP 579449	ob66	187°52'00"	C		1.50 C		Class A
UNMK 16 DP 579449	UNMK 17 DP 579449	ob68	277°52'00"	C		2.00 C		Class A
UNMK 17 DP 579449	UNMK 15 DP 579449	ob69	7°52'00"	C		1.50 C		Class A

Mark and Vector

Survey Number DP 579449

Meridional Circuit Poverty Bay 2000

From	To	Code	Bearing	Adpt Surv	Bearing Correction	Distance	Adpt Surv	Class
PEG VIa DP 345280	UNMK DP 345280	ob53	277°52'00"	A DP 345280	0°00'00"	9.80 A	DP 345280	Class AD
UNMK DP 345280	UNMK (2) DP 2702	ob70	277°52'00"	A DP 345280	0°00'00"	4.68 A	DP 345280	Class AD
IS 2 DP 579449	PEG 4 DP 579449	ob20	84°46'00"	M		36.86 M		
IS 2 DP 579449	DISK 5 DP 579449	ob21	113°29'00"	M		37.28 M		
IS 2 DP 579449	DISK 6 DP 579449	ob22	226°33'00"	M		12.85 M		
IS 2 DP 579449	DISK 7 DP 579449	ob23	236°02'00"	M		12.79 M		
IS 2 DP 579449	PEG 8 DP 579449	ob24	319°04'00"	M		12.67 M		
IS 2 DP 579449	DISK 9 DP 579449	ob25	348°13'00"	M		28.35 M		
IS 3 DP 579449	UNMK 28 DP 579449	ob15	96°47'00"	C		19.06 C		
IS 3 DP 579449	UNMK 25 DP 579449	ob16	159°17'00"	M		16.59 M		
IS 3 DP 579449	UNMK 26 DP 579449	ob17	224°06'00"	M		41.59 M		
PEG X DP 2702	UNMK DP 2702	ob41	277°51'40"	A DP 2702	0°00'40"	21.12 A	DP 2702	
UNMK 26 DP 579449	UNMK 25 DP 579449	ob71	67°36'00"	C		37.65 C		

Mark Name	Mark Condition	Description
AP 1 DP 496164		Flush in concrete nib
DISK 5 DP 579449		In bottom fence railing
DISK 6 DP 579449		In bottom fence railing
DISK 7 DP 579449		In bottom fence railing
DISK 9 DP 579449		On top of post
IS 1 DP 579449		Down 0.1
IS 2 DP 579449		Down 0.1
IS 3 DP 579449		Down 0.2
IT I DP 345280		0.8 east of concrete edging for road
IT SO 7756		Down 0.4m in Grass Berm

*** End of Report ***

Schedule / Memorandum

Land Registration District

Gisborne

Survey Number

LT 579449

Territorial Authority (the Council)

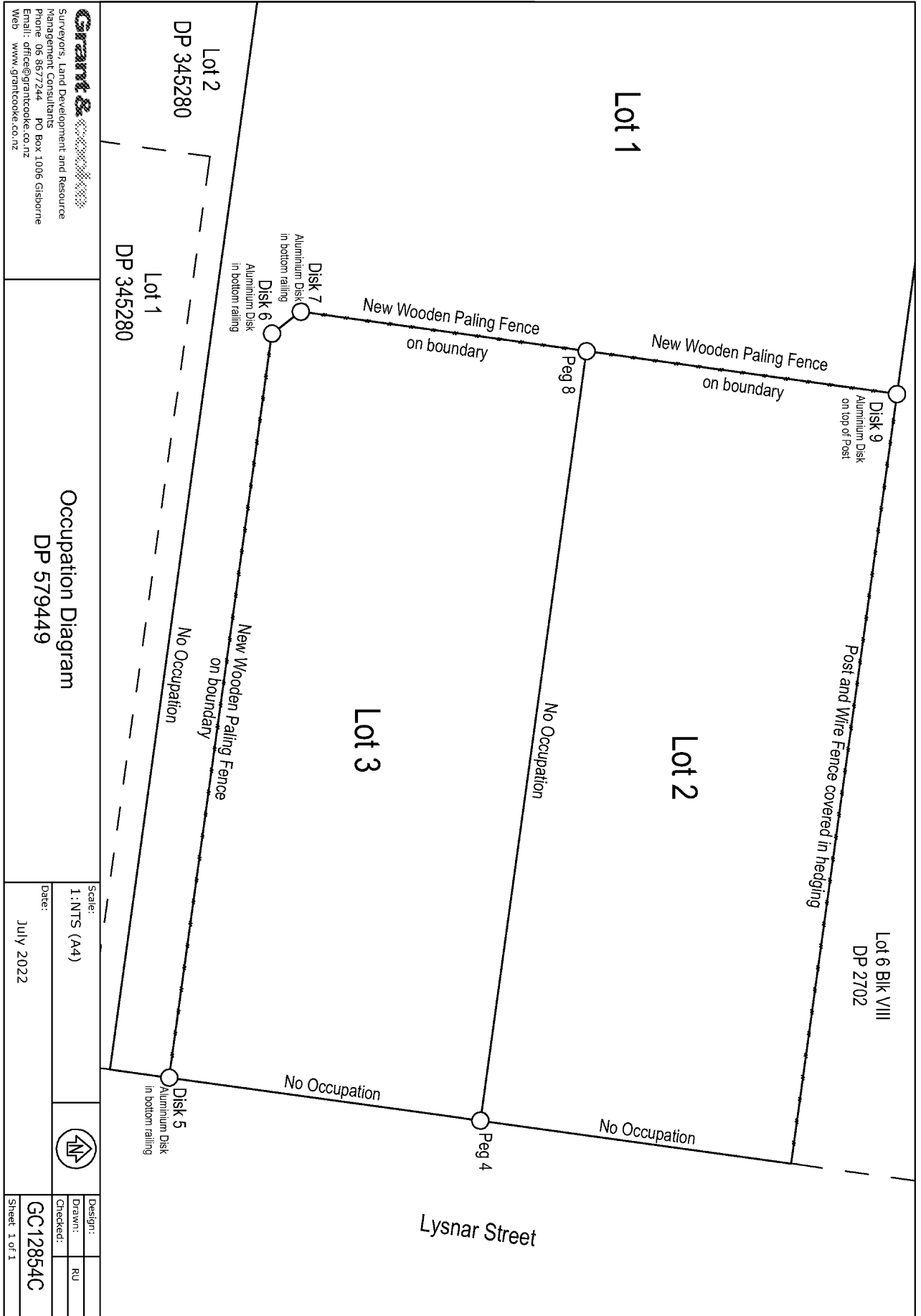
Gisborne District

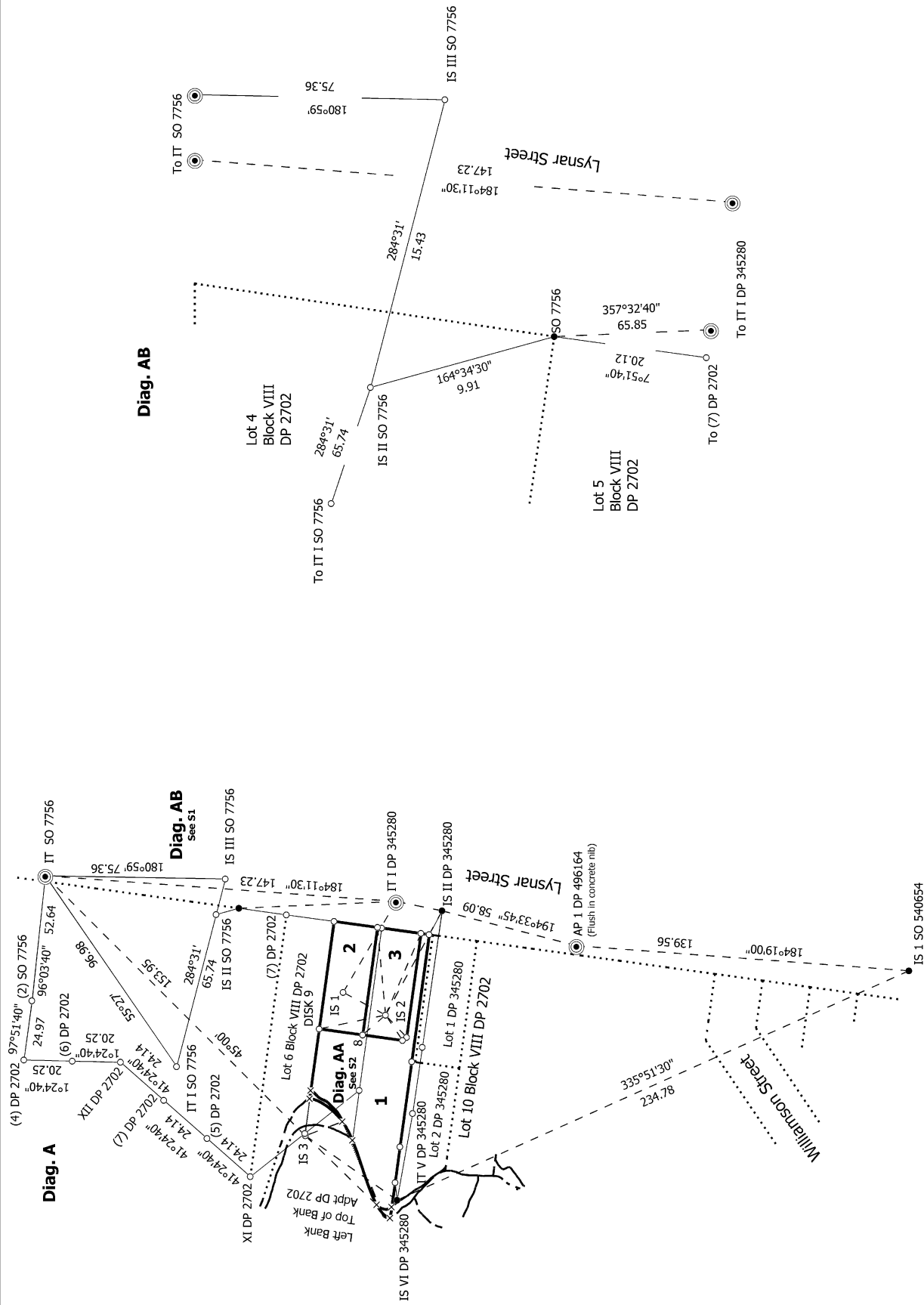
Memorandum of Easements

Last Edited: 11 Jul 2022 14:54:26

<u>Purpose</u>	<u>Shown</u>	<u>Burdened Land</u> (<u>Servient Tenement</u>)	<u>Benefited Land</u> (<u>Dominant Tenement</u>)
Right to drain water	A B	Lot 1 Lot 2 DP 345280	Lot 2, Lot 3 Lot 1, Lot 2, Lot 3

Occupation Diagram

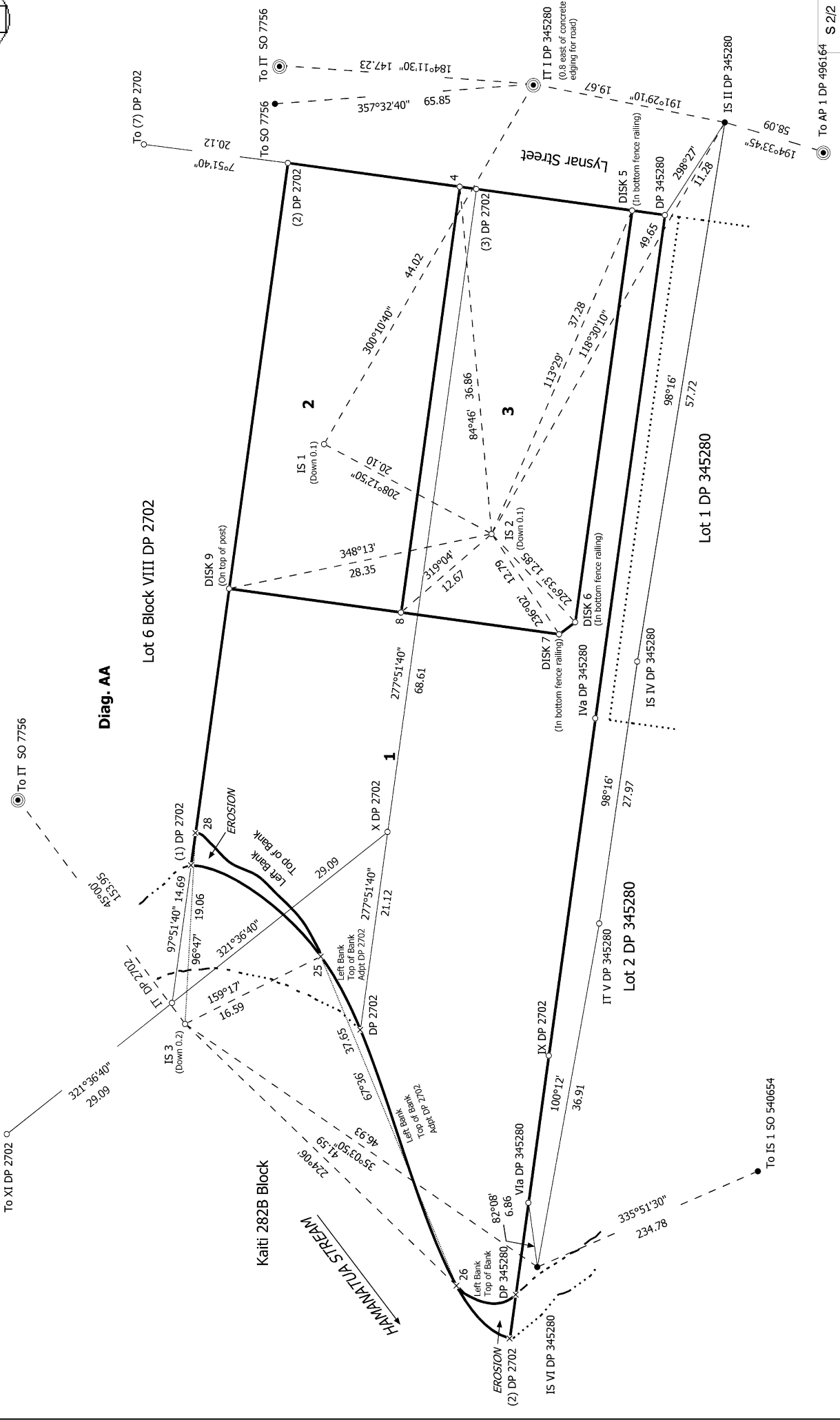




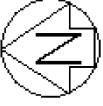
Record of Survey
 DP 579449
 Deposited on: 7/11/2022

Surveyor: Timothy Brian Ronke
 Firm: Grant & Cooke Surveyors Ltd
 Date of Survey: 11/07/2022

Lots 1 - 3 being a Subdivision of Lot 7 and Lot 8 Block VIII DP 2702 and
 Easement over Lot 2 DP 345280



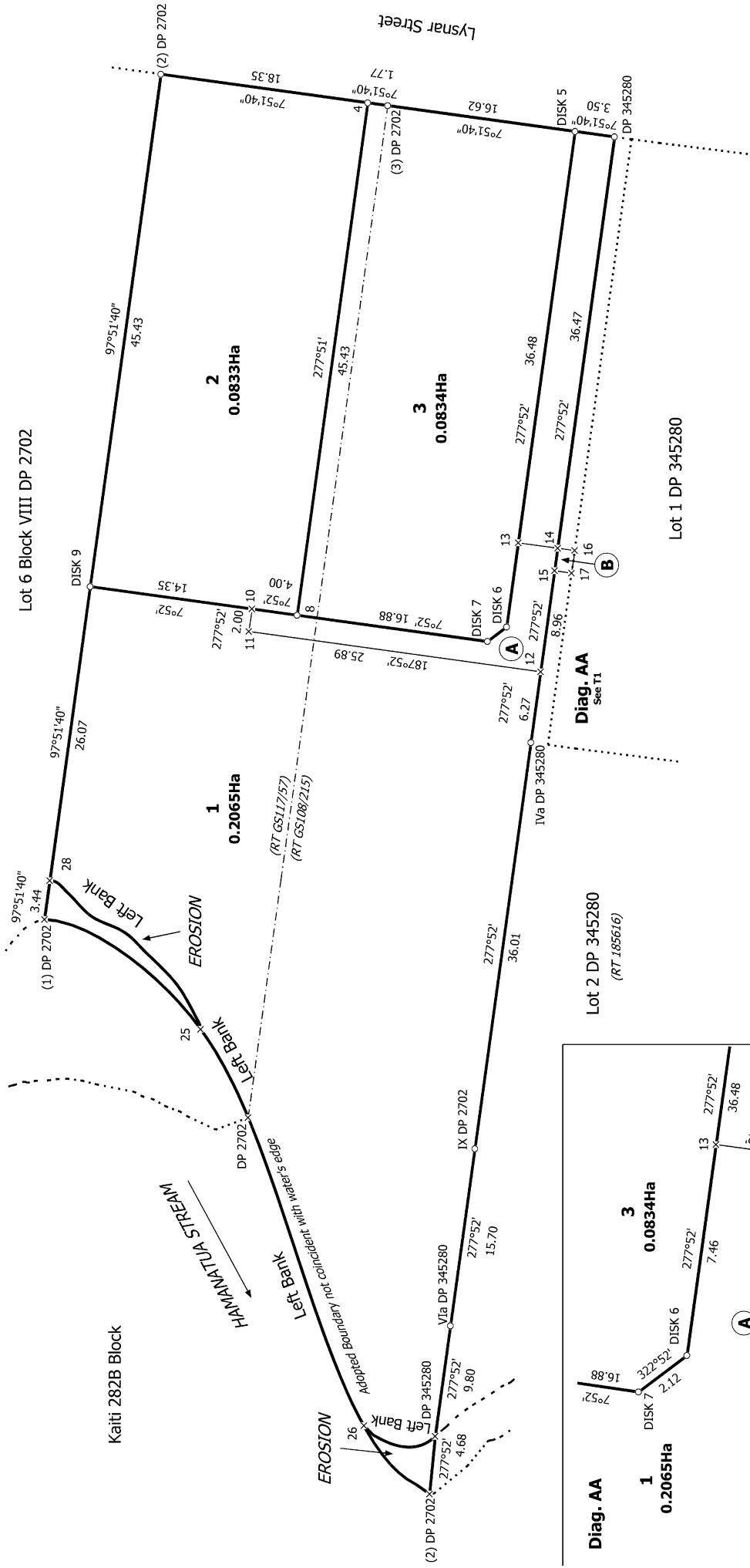
Land District: Gisborne	Lots 1 - 3 being a Subdivision of Lot 7 and Lot 8 Block VIII DP 2702 and Easement over Lot 2 DP 345280	Surveyor: Timothy Brian Ronke Firm: Grant & Cooke Surveyors Ltd Date of Survey: 11/07/2022	Record of Survey DP 579449
Digitally Generated Plan Generated on: 01/11/2022 09:53am Page 9 of 10		Deposited on: 7/11/2022	



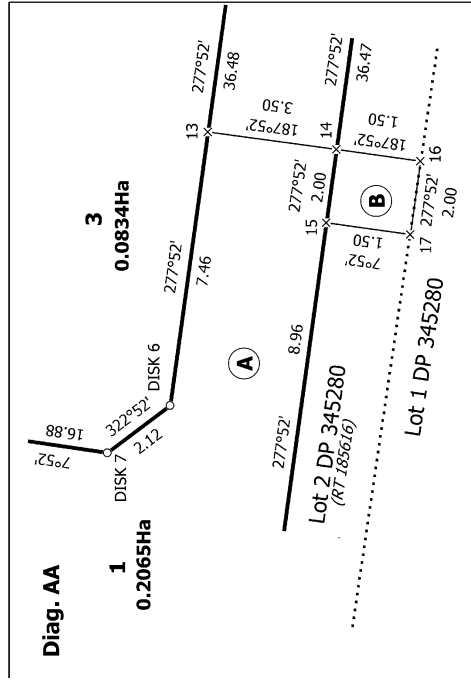
Diag. A

Lot 6 Block VIII DP 2702

Kaiti 282B Block



Diag. AA



Land District: Gisborne

Digitally Generated Plan

Generated on: 01/12/2022 09:53am | Page 10 of 10

Lots 1 - 3 being a Subdivision of Lot 7 and Lot 8 Block VIII DP 2702 and Easement over Lot 2 DP 345280

Surveyor: Timothy Brian Ronke
Firm: Grant & Cooke Surveyors Ltd
Date of Survey: 11/07/2022

Record of Survey
DP 579449

Deposited on: 7/11/2022

T 1/1