

Record of Survey - DP 579585

Survey Number DP 579585
Surveyor Reference 21023 - 569 Manchester St
Surveyor Vincent Thomas Ryan
Survey Firm Vince T Ryan Registered Surveyor
Surveyor Declaration I Vincent Thomas Ryan, being a licensed cadastral surveyor, certify that--
 (a) this dataset provided by me and its related survey are accurate, correct and in accordance with the Cadastral Survey Act 2002 and Cadastral Survey Rules 2021; and
 (b) the survey was undertaken by me or under my personal direction.
 Declared on 08 Aug 2022 04:39 PM

Survey Details

Dataset Description LOTS 1 - 4 BEING SUBDIVISION OF PART LOTS 1 & 2 DP 3204
Purpose LT Subdivision
Status Deposited **Type** Survey
Land District Canterbury **Survey Class** Class A
Meridional Circuit Mount Pleasant 2000 **Vertical Datum** None

Survey Dates

Surveyed Date 12/07/2022 **Certified Date** 08/08/2022
Submitted Date 08/08/2022 16:39:43 **Survey Approval Date** 25/08/2022
Deposit Date 08/08/2022

Referenced Surveys

Survey Number	Land District	Bearing Correction
DP 544224	Canterbury	0°00'00"
DP 3204	Canterbury	0°00'00"
DP 568996	Canterbury	0°00'00"
SO 484926	Canterbury	0°00'00"
DP 72575	Canterbury	0°00'00"

Territorial Authorities

Christchurch City

Comprised In

RT CB20K/1090

Created Parcels

Parcels	Parcel Intent	Area	RT Reference
Lot 1 Deposited Plan 579585	Fee Simple Title	0.0103 Ha	1076300
Lot 2 Deposited Plan 579585	Fee Simple Title	0.0150 Ha	1076301
Lot 3 Deposited Plan 579585	Fee Simple Title	0.0132 Ha	1076302
Lot 4 Deposited Plan 579585	Fee Simple Title	0.0121 Ha	1076303
Area A Deposited Plan 579585	Easement		
Area B Deposited Plan 579585	Easement		
Area C Deposited Plan 579585	Easement		



Record of Survey - DP 579585

Created Parcels

Parcels	Parcel Intent	Area	RT Reference
Area D Deposited Plan 579585	Easement		
Area E Deposited Plan 579585	Easement		
Area F Deposited Plan 579585	Easement		
Area G Deposited Plan 579585	Easement		
Area H Deposited Plan 579585	Easement		
Area I Deposited Plan 579585	Easement		
Area J Deposited Plan 579585	Easement		
Area K Deposited Plan 579585	Easement		
Area L Deposited Plan 579585	Easement		
Area M Deposited Plan 579585	Easement		
Area N Deposited Plan 579585	Easement		
Area P Deposited Plan 579585	Easement		
Total Area		<hr/> 0.0506 Ha	

Mark and Vector

Survey Number DP 579585

Meridional Circuit Mount Pleasant 2000

From	To	Code	Bearing	Adpt Surv	Bearing Correction	Distance	Adpt Surv	Class
BD I DP 568996	IR I DP 579585	ob0	89°48'00"	A DP 568996	0°00'00"	18.18 C		Class A
IR I DP 579585	UNMK 88 DP 579585	ob1	89°48'00"	A DP 568996	0°00'00"	6.61 C		Class A
UNMK 88 DP 579585	IR II DP 579585	ob2	89°48'00"	A DP 568996	0°00'00"	2.88 C		Class A
IR II DP 579585	PEG 4 SO 484926	ob3	89°48'00"	A DP 568996	0°00'00"	8.62 C		Class A
PEG 4 SO 484926	BD III DP 579585	ob4	179°49'15"	A SO 484926	0°00'00"	13.94 C		Class A
BD III DP 579585	UNMK 90 DP 579585	ob5	89°48'00"	C		8.76 C		Class A
UNMK 90 DP 579585	UNMK 91 DP 579585	ob6	89°48'00"	C		9.35 C		Class A
UNMK 91 DP 579585	UNMK 92 DP 579585	ob8	89°48'00"	C		9.41 C		Class A
UNMK 92 DP 579585	UNMK 93 DP 579585	ob10	89°48'00"	C		6.77 C		Class A
UNMK 93 DP 579585	UNMK 3 DP 579585	ob12	89°48'00"	C		2.00 C		Class A
UNMK 3 DP 579585	UNMK 101 DP 579585	ob14	179°50'00"	C		9.44 C		Class A
UNMK 101 DP 579585	UNMK 102 DP 579585	ob15	179°50'00"	C		1.50 C		Class A
UNMK 102 DP 579585	PEG VIII DP 579585	ob16	179°50'00"	C		1.00 C		Class A
PEG VIII DP 579585	BD I DP 568996	ob17	179°50'00"	C		2.00 C		Class A
UNMK 92 DP 579585	PEG VI DP 579585	ob11	179°49'30"	C		0.50 C		Class A
UNMK 94 DP 579585	UNMK 95 DP 579585	ob18	179°49'30"	C		2.09 C		Class A
UNMK 95 DP 579585	UNMK 96 DP 579585	ob20	89°49'00"	C		0.14 C		Class A
UNMK 96 DP 579585	UNMK 97 DP 579585	ob21	179°49'30"	C		6.80 C		Class A
UNMK 97 DP 579585	UNMK 98 DP 579585	ob23	179°49'30"	C		0.08 C		Class A
UNMK 98 DP 579585	PEG IX DP 579585	ob25	179°49'30"	C		1.00 C		Class A
PEG IX DP 579585	PEG VIII DP 579585	ob27	89°48'00"	C		8.63 C		Class A
UNMK 91 DP 579585	PEG V DP 579585	ob9	179°49'30"	C		0.50 C		Class A
UNMK 103 DP 579585	UNMK 104 DP 579585	ob28	179°49'30"	C		1.00 C		Class A
UNMK 104 DP 579585	UNMK 105 DP 579585	ob30	179°49'30"	C		3.83 C		Class A

Mark and Vector

Survey Number DP 579585

Meridional Circuit Mount Pleasant 2000

From	To	Code	Bearing	Adpt Surv	Bearing Correction	Distance	Adpt Surv	Class
UNMK 105 DP 579585	IR I DP 579585	ob32	179°49'30"	C		7.14 C		Class A
UNMK 90 DP 579585	PEG IV DP 579585	ob7	179°49'30"	C		0.50 C		Class A
UNMK 106 DP 579585	UNMK 107 DP 579585	ob34	179°49'30"	C		2.10 C		Class A
UNMK 107 DP 579585	UNMK 108 DP 579585	ob36	89°49'00"	C		0.14 C		Class A
UNMK 108 DP 579585	UNMK 109 DP 579585	ob39	179°49'30"	C		6.79 C		Class A
UNMK 109 DP 579585	UNMK 110 DP 579585	ob40	179°49'30"	C		0.08 C		Class A
UNMK 110 DP 579585	UNMK 111 DP 579585	ob42	179°49'30"	C		0.91 C		Class A
UNMK 111 DP 579585	IR II DP 579585	ob44	179°49'30"	C		2.09 C		Class A
UNMK 110 DP 579585	UNMK 112 DP 579585	ob43	89°48'00"	C		2.88 C		Class A
UNMK 112 DP 579585	UNMK 113 DP 579585	ob45	89°48'00"	C		4.78 C		Class A
UNMK 113 DP 579585	UNMK 105 DP 579585	ob47	23°40'00"	C		4.53 C		Class A
UNMK 105 DP 579585	UNMK 114 DP 579585	ob33	155°58'00"	C		4.53 C		Class A
UNMK 114 DP 579585	UNMK 98 DP 579585	ob48	89°48'00"	C		7.72 C		Class A
UNMK 98 DP 579585	UNMK 115 DP 579585	ob26	89°48'00"	C		3.74 C		Class A
UNMK 115 DP 579585	UNMK 116 DP 579585	ob49	89°48'00"	C		2.89 C		Class A
UNMK 116 DP 579585	UNMK 102 DP 579585	ob51	89°48'00"	C		2.00 C		Class A
UNMK 116 DP 579585	UNMK 101 DP 579585	ob52	52°56'00"	C		2.50 C		Class A
UNMK 115 DP 579585	UNMK 117 DP 579585	ob50	45°49'00"	C		4.02 C		Class A
UNMK 117 DP 579585	UNMK 118 DP 579585	ob53	179°50'00"	C		5.18 C		Class A
UNMK 118 DP 579585	UNMK 119 DP 579585	ob54	179°50'00"	C		1.00 C		Class A
UNMK 119 DP 579585	UNMK 93 DP 579585	ob55	179°50'00"	C		1.97 C		Class A
UNMK 96 DP 579585	UNMK 121 DP 579585	ob22	89°49'00"	C		0.14 C		Class A
UNMK 121 DP 579585	UNMK 122 DP 579585	ob56	179°49'30"	C		6.80 C		Class A
UNMK 122 DP 579585	UNMK 97 DP 579585	ob58	89°49'00"	C		0.14 C		Class A

Mark and Vector

Survey Number DP 579585

Meridional Circuit Mount Pleasant 2000

From	To	Code	Bearing	Adpt Surv	Bearing Correction	Distance	Adpt Surv	Class
UNMK 97 DP 579585	UNMK 123 DP 579585	ob24	89°49'00"	C		0.14 C		Class A
UNMK 123 DP 579585	UNMK 95 DP 579585	ob59	179°49'30"	C		6.80 C		Class A
UNMK 121 DP 579585	UNMK 124 DP 579585	ob57	179°49'30"	C		1.09 C		Class A
UNMK 124 DP 579585	UNMK 118 DP 579585	ob60	89°48'00"	C		6.49 C		Class A
UNMK 107 DP 579585	UNMK 125 DP 579585	ob37	179°49'30"	C		6.79 C		Class A
UNMK 125 DP 579585	UNMK 109 DP 579585	ob61	89°49'00"	C		0.14 C		Class A
UNMK 109 DP 579585	UNMK 126 DP 579585	ob41	89°49'00"	C		0.14 C		Class A
UNMK 126 DP 579585	UNMK 127 DP 579585	ob62	179°49'30"	C		6.79 C		Class A
UNMK 127 DP 579585	UNMK 108 DP 579585	ob64	89°49'00"	C		0.14 C		Class A
UNMK 127 DP 579585	UNMK 128 DP 579585	ob65	179°49'30"	C		2.10 C		Class A
UNMK 128 DP 579585	UNMK 106 DP 579585	ob66	89°48'00"	C		0.28 C		Class A
UNMK 106 DP 579585	UNMK 103 DP 579585	ob35	89°48'00"	C		9.35 C		Class A
UNMK 103 DP 579585	UNMK 94 DP 579585	ob29	89°48'00"	C		9.41 C		Class A
UNMK 94 DP 579585	UNMK 119 DP 579585	ob19	89°48'00"	C		6.77 C		Class A
UNMK 107 DP 579585	UNMK 129 DP 579585	ob38	24°38'00"	C		1.21 C		Class A
UNMK 129 DP 579585	UNMK 104 DP 579585	ob67	89°48'00"	C		8.84 C		Class A
UNMK 104 DP 579585	UNMK 130 DP 579585	ob31	89°48'00"	C		8.85 C		Class A
UNMK 130 DP 579585	UNMK 95 DP 579585	ob68	152°26'00"	C		1.23 C		Class A
UNMK 126 DP 579585	UNMK 131 DP 579585	ob63	179°49'00"	C		1.00 C		Class A
UNMK 131 DP 579585	UNMK 111 DP 579585	ob69	89°48'00"	C		0.14 C		Class A
UNMK 112 DP 579585	UNMK 88 DP 579585	ob46	179°49'00"	C		3.00 C		Class A
UNMK 3 DP 579585	PEG DP 72525	ob13	179°50'00"	C		13.94 C		
PEG DP 72525	IT I DP 72575	ob70	200°15'00"	A	DP 72575	0°00'00"	9.79 A	DP 72575
IT I DP 72575	MN XX DP 579585	ob71	180°58'40"	M			25.31 M	

Mark and Vector

Survey Number DP 579585

Meridional Circuit Mount Pleasant 2000

From	To	Code	Bearing	Adpt Surv	Bearing Correction	Distance	Adpt Surv	Class
MN XX DP 579585	IS XXI DP 568996	ob73	180°28'30"	M		15.74 M		
IS XXI DP 568996	IS XXII DP 568996	ob81	173°39'30"	M		21.69 M		
IS XXII DP 568996	IS 94 DP 544224	ob87	178°58'20"	M		29.98 M		
IS 94 DP 544224	IT I DP 72575	ob88	178°32'00"	M		92.61 M		
IS XXI DP 568996	BD I DP 568996	ob82	325°27'00"	M		4.84 M		
MN XX DP 579585	PEG 4 SO 484926	ob74	253°07'30"	M		40.93 M		
IT I DP 72575	PEG DP 72575	ob72	256°45'00"	A SO 484926	0°00'00"	40.60 A SO 484926		
PEG DP 72575	UNMK DP 72575	ob89	89°49'05"	A DP 72575	0°00'00"	0.20 A DP 72575		
UNMK DP 72575	BD III DP 579585	ob90	179°49'15"	A SO 484926	0°00'00"	13.94 C		
MN XX DP 579585	IR VII DP 579585	ob75	318°47'00"	M		2.91 M		
IR VII DP 579585	UNMK 3 DP 579585	ob91	89°48'00"	C		1.00 C		
PEG VI DP 579585	UNMK 94 DP 579585	ob92	179°49'30"	C		1.47 C		Class A
PEG V DP 579585	UNMK 103 DP 579585	ob93	179°49'30"	C		1.47 C		Class A
PEG IV DP 579585	UNMK 106 DP 579585	ob94	179°49'30"	C		1.47 C		Class A
MN XX DP 579585	PEG VI DP 579585	ob76	278°03'00"	M		11.80 M		
MN XX DP 579585	PEG V DP 579585	ob77	274°24'00"	M		21.16 M		
MN XX DP 579585	PEG IV DP 579585	ob78	272°59'30"	M		30.49 M		
MN XX DP 579585	BD III DP 579585	ob79	273°00'30"	M		39.26 M		
IS XXI DP 568996	IR I DP 579585	ob83	280°37'00"	M		21.29 M		
IS XXI DP 568996	IR II DP 579585	ob84	277°17'00"	M		30.66 M		
IS XXI DP 568996	PEG IX DP 579585	ob85	297°37'00"	M		12.84 M		
IS XXI DP 568996	PEG VIII DP 579585	ob86	335°19'00"	M		6.59 M		
IS XXI DP 568996	IR VII DP 579585	ob80	354°19'00"	M		18.02 M		

Mark Name	Mark Condition	Description
IS 94 DP 544224		fl in seal

Mark and Vector

Survey Number DP 579585
Meridional Circuit Mount Pleasant 2000

Mark Name	Mark Condition	Description
IS XXI DP 568996		fl in footpath
IS XXII DP 568996		fl in seal
IT I DP 72575		fl in seal
MN XX DP 579585		fl in kerb
UNMK 94 DP 579585		fl in seal

*** End of Report ***

Schedule / Memorandum

Land Registration District

Canterbury

Plan Number

DP 579585

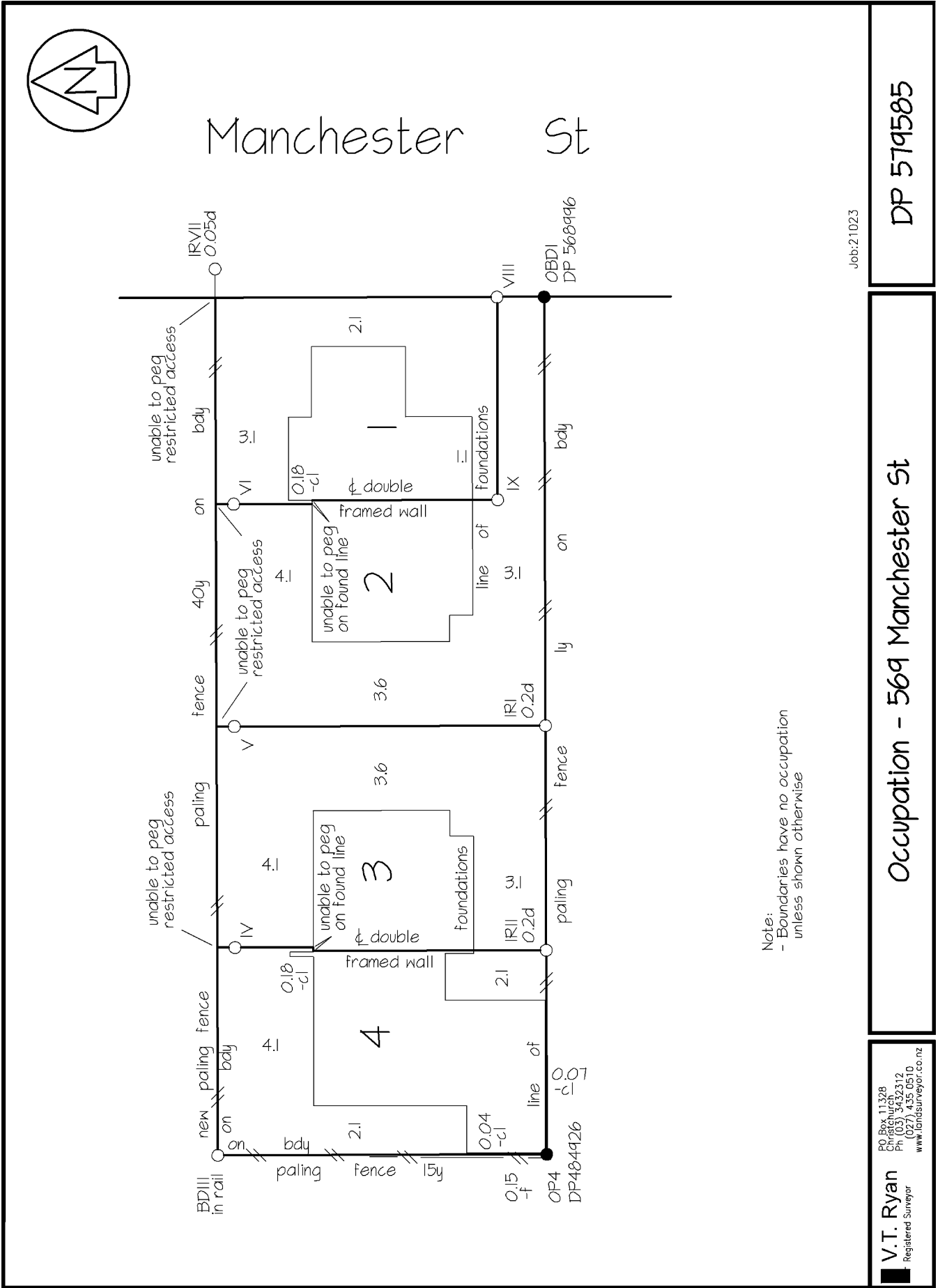
Ref: 21023

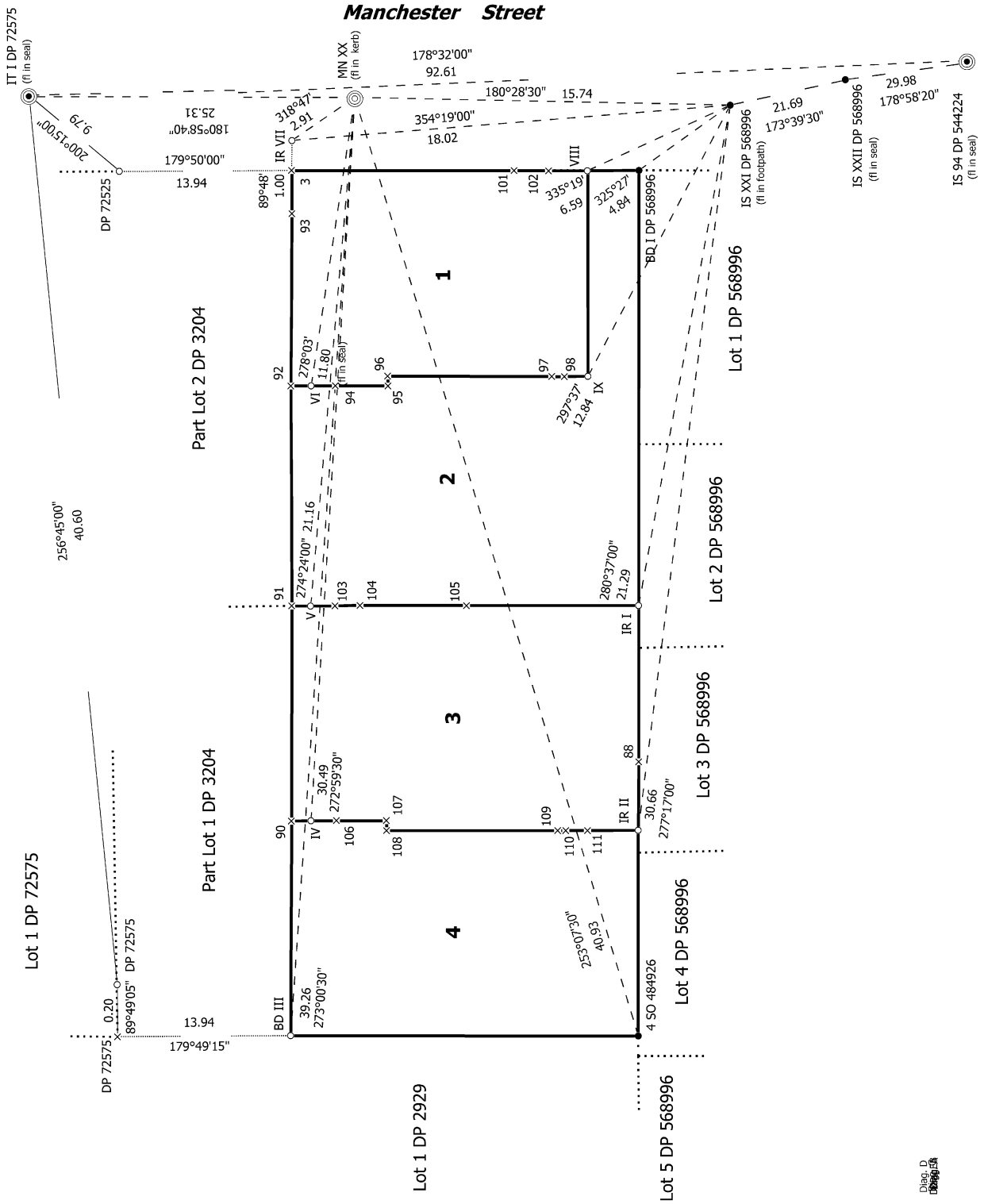
Territorial Authority

Christchurch City Council

Memorandum of Easements			
Purpose	Servient Tenement (Burdened Land) Lot	Shown	Dominant Tenement (Benefited Land) Lot
Right of way	1 2 3	A B C	2, 3, 4 3, 4 2, 4
Right to drain water and sewage and convey water, electricity and telecommunications	1 2 3 3	A B C D	2, 3, 4 1, 3, 4 2, 4 4
Right to drain water	1 2 3 4	E, F, P G H I, N	2, 3, 4 1, 3, 4 2, 4 3
Right to drain sewage and convey electricity and telecommunications	1	E, P	2, 3, 4
Right to park	3	D	4
Fire wall	1 2 3 4	J K L M	2 1 4 3

Area P hereon is subject to a Consent Notice – Visibility spay



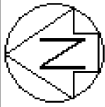


Diag. D
08/06/22

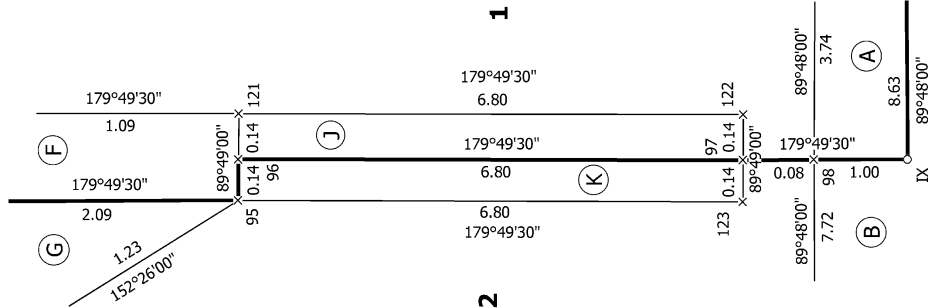
S 1/1

Job: 21023

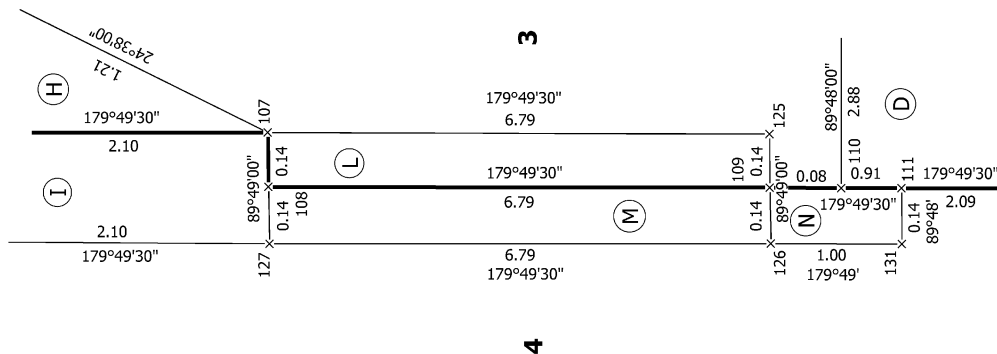
Land District: Canterbury	Record of Survey DP 579585
Digitally Generated Plan Generated on: 12/09/2022 2:05pm Page 10 of 12	Surveyor: Vincent Thomas Ryan Firm: Vince T Ryan Registered Surveyor Date of Survey: 12/07/2022
LOTS 1 - 4 BEING SUBDIVISION OF PART LOTS 1 & 2 DP 3204	
Deposited on: 8/08/2022	



Diag. AB



Diag. AA



T 1/2

Job: 21023

Land District: Canterbury

Digitally Generated Plan

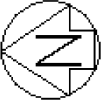
Generated on: 12/09/2022 2:05pm Page 11 of 12

LOTS 1 - 4 BEING SUBDIVISION OF PART LOTS 1 & 2 DP 3204

Surveyor: Vincent Thomas Ryan
Firm: Vince T Ryan Registered Surveyor
Date of Survey: 12/07/2022

Record of Survey
DP 579585

Deposited on: 8/08/2022

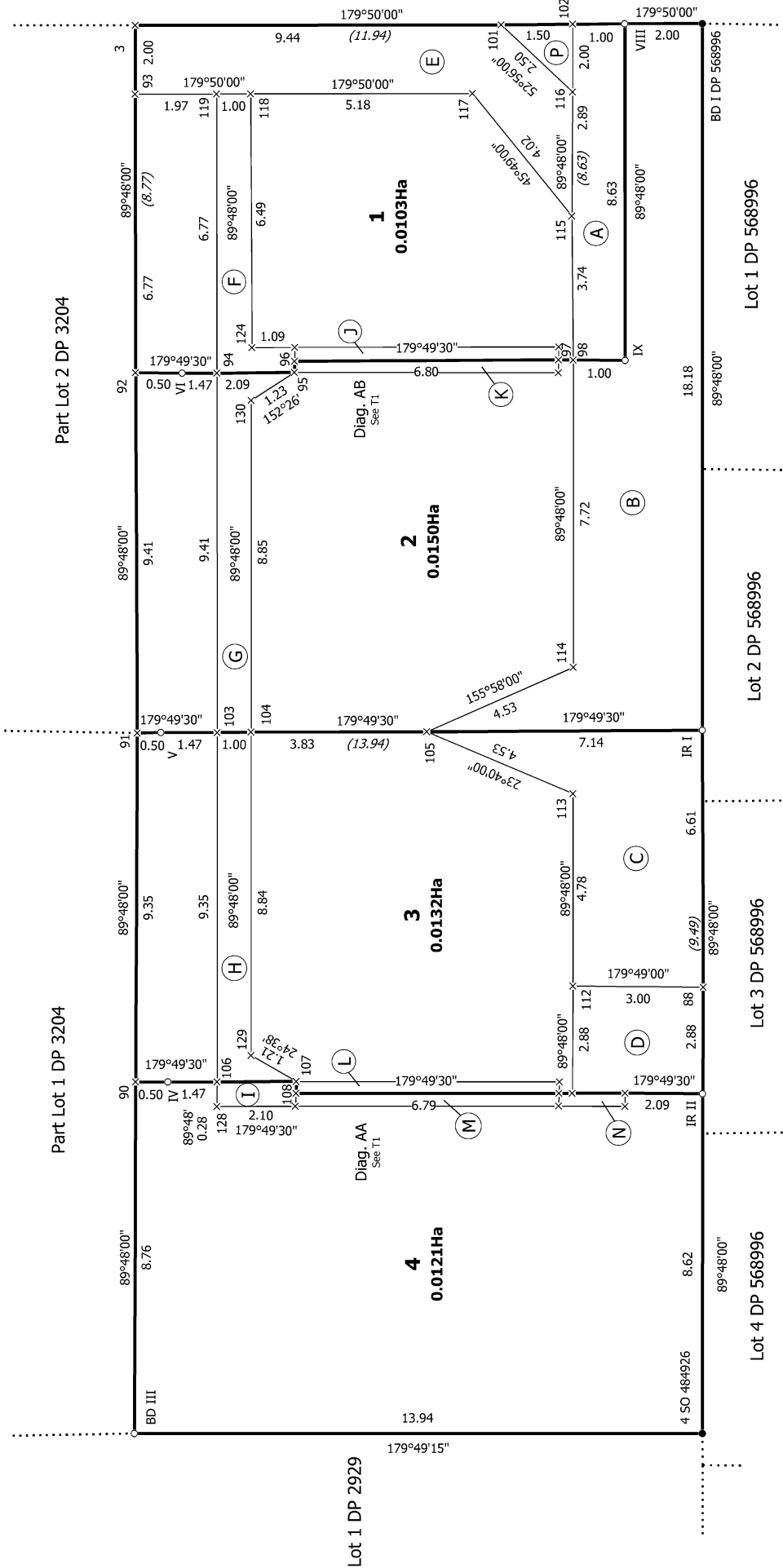


Manchester Street

Part Lot 2 DP 3204

Part Lot 1 DP 3204

Diag. A



Lot 1 DP 2929

Lot 4 DP 568996

Lot 3 DP 568996

Lot 2 DP 568996

Lot 1 DP 568996

T 2/2

Job: 21023

Land District: Canterbury

Digitally Generated Plan

Generated on: 12/09/2022 2:05pm Page 12 of 12

LOTS 1 - 4 BEING SUBDIVISION OF PART LOTS 1 & 2 DP 3204

Surveyor: Vincent Thomas Ryan
Firm: Vince T Ryan Registered Surveyor
Date of Survey: 12/07/2022

Record of Survey
DP 579585
Deposited on: 8/08/2022