



Record of Survey - DP 584237

Survey Number DP 584237
Surveyor Reference 8902 S.J. Lewis
Surveyor Daniel John Chapman
Survey Firm Buckton Consulting Surveyors Limited
Surveyor Declaration I Daniel John Chapman, being a licensed cadastral surveyor, certify that--
(a) this dataset provided by me and its related survey are accurate, correct and in accordance with the Cadastral Survey Act 2002 and Cadastral Survey Rules 2021; and
(b) the survey was undertaken by me or under my personal direction.
Declared on 01 Mar 2023 08:30 AM

Survey Details

Dataset Description Plan of Lots 1 and 2 being a Subdivision of Lots 1 and 2 DP 176860
Purpose LT Subdivision
Status Deposited
Land District North Auckland
Meridional Circuit Mount Eden 2000

Type	Survey
Survey Class	Class B
Vertical Datum	None

Survey Dates

Surveyed Date	30/11/2022	Certified Date	01/03/2023
Submitted Date	01/03/2023 08:30:15	Survey Approval Date	01/03/2023
Deposit Date	08/02/2023		

Referenced Surveys

Survey Number	Land District	Bearing Correction
DP 176860	North Auckland	0°00'00"
DP 32055	North Auckland	0°00'00"
SO 43015	North Auckland	0°00'00"
SO 14259	North Auckland	0°00'00"
ML 12305	North Auckland	0°00'00"
DP 42956	North Auckland	0°00'00"
ML 1947/A	North Auckland	0°00'00"

Territorial Authorities

Auckland Council

Comprised In

RT NA109A/311
RT NA109A/310

Created Parcels

Parcels	Parcel Intent	Area	RT Reference
Lot 1 Deposited Plan 584237	Fee Simple Title	1.2550 Ha	1105899
Lot 2 Deposited Plan 584237	Fee Simple Title Erosion	13.0025 Ha	1105900



Record of Survey - DP 584237

Created Parcels

Parcels	Parcel Intent	Area	RT Reference
Area A Deposited Plan 584237	Covenant - Land		
Total Area		<hr/> 14.2575 Ha	

Mark and Vector

Survey Number DP 584237

Meridional Circuit Mount Eden 2000

From	To	Code	Bearing	Adpt Surv	Bearing Correction	Distance	Adpt Surv	Class
IT IV DP 176860	IT III DP 176860	ob0	187°43'20" M			78.09 M		
IT III DP 176860	IT DP 32055	ob7	316°08'50" M			252.25 M		
IT DP 32055	IT IX DP 176860	ob9	37°54'30" M			139.21 M		
IT IX DP 176860	IT IV DP 176860	ob10	155°03'00" M			236.45 M		
IT IV DP 176860	IT I DP 584237	ob1	271°35'00" M			70.27 M		
IT I DP 584237	IS IV SO 43015	ob15	103°58'00" M			80.07 M		
IS IV SO 43015	IT IV DP 176860	ob19	336°49'00" M			18.91 M		
IT IV DP 176860	PEG (5) DP 176860	ob2	2°09'00" M			11.50 M		
IT IV DP 176860	IS V DP 176860	ob3	32°25'00" M			55.90 M		
IT IV DP 176860	IT II DP 584237	ob4	191°17'00" M			31.69 M		
IT IV DP 176860	POST 1 DP 584237	ob5	283°25'00" M			34.05 M		
IT I DP 584237	PEG 3 DP 584237	ob16	190°32'00" M			27.92 M		
IT I DP 584237	PEG 4 DP 584237	ob17	190°43'00" M			28.08 M		
IT I DP 584237	PEG 2 DP 584237	ob18	264°09'00" M			27.70 M		
IT III DP 176860	IS XIX DP 176860	ob8	304°12'00" A	DP 176860	0°00'00"	75.13 A	DP 176860	
IS XIX DP 176860	IS II DP 42956	ob26	310°22'00" A	DP 176860	0°00'00"	59.14 A	DP 176860	
IS II DP 42956	IS XVIII DP 176860	ob28	318°52'00" A	DP 176860	0°00'00"	18.80 A	DP 176860	
IS XVIII DP 176860	IS XVII DP 176860	ob31	250°11'30" A	DP 176860	0°00'00"	57.18 A	DP 176860	
IS XVII DP 176860	IT DP 32055	ob32	359°14'00" A	DP 176860	0°00'00"	106.58 A	DP 176860	
IT IV DP 176860	IT V SO 43015	ob6	191°13'30" A	DP 176860	0°00'00"	31.63 A	DP 176860	
IT V SO 43015	IS IV SO 43015	ob81	44°50'00" A	SO 43015	0°00'00"	19.25 A	SO 43015	
IT V SO 43015	IT II DP 584237	ob82	233°19'00" C			0.08 C		
IS XIX DP 176860	PEG 3 DP 584237	ob27	344°09'00" A	DP 176860	0°00'00"	10.03 A	DP 176860	
PEG 3 DP 584237	PEG 4 DP 584237	ob22	219°52'00" C			0.18 C		
IS II DP 42956	PEG (18) DP 176860	ob29	56°25'00" A	DP 176860	0°00'00"	12.08 A	DP 176860	
PEG (5) DP 176860	PEG (6) DP 176860	ob20	83°34'00" A	DP 176860	0°00'00"	38.59 A	DP 176860	Class B
PEG (6) DP 176860	PEG (7) DP 176860	ob33	216°46'00" A	DP 176860	0°00'00"	44.44 A	DP 176860	Class B
PEG (7) DP 176860	PEG (8) DP 176860	ob35	171°08'00" A	DP 176860	0°00'00"	41.11 A	DP 176860	Class B
PEG (8) DP 176860	PEG (9) DP 32055	ob37	45°21'00" A	DP 176860	0°00'00"	21.53 A	DP 176860	Class B

Mark and Vector

Survey Number DP 584237

Meridional Circuit Mount Eden 2000

From	To	Code	Bearing	Adpt Surv	Bearing Correction	Distance	Adpt Surv	Class
PEG (9) DP 32055	PEG (10) SO 43015	ob38	156°45'00"	A SO 43015	0°00'00"	68.48 A	SO 43015	Class B
PEG (10) SO 43015	PEG (11) SO 43015	ob39	183°09'00"	A SO 43015	0°00'00"	21.59 A	SO 43015	Class B
PEG (11) SO 43015	PEG (12) SO 43015	ob40	253°06'00"	A SO 43015	0°00'00"	21.73 A	SO 43015	Class B
PEG (12) SO 43015	PEG (13) SO 43015	ob41	309°38'00"	A SO 43015	0°00'00"	27.50 A	SO 43015	Class B
PEG (13) SO 43015	PEG (14) SO 14259	ob42	263°06'00"	A SO 14259	0°00'00"	26.76 A	SO 43015	Class B
PEG (14) SO 14259	PEG (15) SO 43015	ob43	295°04'00"	A SO 14259	0°00'00"	32.85 A	ML 12305	Class B
PEG (15) SO 43015	PEG (16) SO 14259	ob44	336°09'00"	A ML 1947/A	0°00'00"	25.15 A	ML 12305	Class B
PEG (16) SO 14259	PEG (17) DP 176860	ob45	358°14'00"	A SO 14259	0°00'00"	31.24 A	ML 12305	Class B
PEG (17) DP 176860	PEG 3 DP 584237	ob46	317°37'00"	A SO 14259	0°00'00"	38.00 A	DP 176860	Class B
PEG 3 DP 584237	PEG 2 DP 584237	ob23	317°37'00"	A DP 32055	0°00'00"	33.31 C		Class B
PEG 2 DP 584237	PEG (18) DP 176860	ob24	317°37'00"	A DP 32055	0°00'00"	14.53 C		Class B
PEG (29) DP 32055	PEG (30) DP 32055	ob48	202°27'00"	A SO 14259	0°00'00"	18.93 A	DP 32055	Class BD
PEG (30) DP 32055	PEG (31) DP 32055	ob49	173°30'00"	A SO 14259	0°00'00"	30.96 A	SO 14259	Class B
PEG (31) DP 32055	PEG (32) DP 32055	ob50	193°16'00"	A SO 14259	0°00'00"	16.72 A	SO 14259	Class B
PEG (32) DP 32055	PEG (9) DP 32055	ob51	207°40'00"	A SO 14259	0°00'00"	59.59 A	SO 14259	Class B
PEG (18) DP 176860	PEG (19) DP 176860	ob36	317°37'00"	A SO 14259	0°00'00"	26.17 A	DP 176860	Class B
PEG (19) DP 176860	PEG (20) DP 32055	ob52	250°10'00"	A SO 14259	0°00'00"	54.42 A	SO 14259	Class B
PEG (20) DP 32055	PEG (21) DP 32055	ob53	288°49'00"	A DP 32055	0°00'00"	16.03 A	DP 32055	Class B
PEG (21) DP 32055	PEG (22) DP 176860	ob54	336°10'30"	A DP 32055	0°00'00"	188.87 A	DP 176860	Class B
PEG (22) DP 176860	PEG (23) DP 176860	ob55	336°10'30"	A DP 32055	0°00'00"	20.65 A	DP 176860	Class B
PEG (23) DP 176860	PEG (24) DP 81363	ob56	336°10'30"	A DP 32055	0°00'00"	58.76 A	DP 176860	Class B
PEG (24) DP 81363	PEG (25) DP 176860	ob57	336°10'30"	A DP 32055	0°00'00"	131.72 A	DP 176860	Class B
PEG (25) DP 176860	PEG (26) DP 32055	ob58	336°10'30"	A DP 32055	0°00'00"	116.98 A	DP 176860	Class B
PEG (26) DP 32055	UNMK (27) DP 32055	ob59	336°10'30"	A DP 32055	0°00'00"	0.40 A	DP 32055	Class BD

Mark and Vector

Survey Number DP 584237

Meridional Circuit Mount Eden 2000

From	To	Code	Bearing	Adpt Surv	Bearing Correction	Distance	Adpt Surv	Class
UNMK (28) DP 32055	UNMK 9 DP 584237	ob47	136°23'30"	A ML 1947/A	0°00'00"	1.87 C		Class BD
UNMK 9 DP 584237	PEG VII DP 32055	ob83	136°23'30"	A ML 1947/A	0°00'00"	12.21 C		Class BD
PEG VII DP 32055	PEG VIII DP 32055	ob60	136°23'30"	A ML 1947/A	0°00'00"	119.53 A DP 32055		Class BD
PEG (6) DP 176860	POST (33) DP 176860	ob34	352°17'00"	A DP 176860	0°00'00"	10.46 A DP 176860		Class B
POST (33) DP 176860	POST (34) DP 176860	ob61	351°59'00"	A DP 176860	0°00'00"	31.20 A DP 176860		Class B
POST (34) DP 176860	PEG (35) DP 176860	ob62	337°46'00"	A DP 176860	0°00'00"	43.60 A DP 176860		Class B
PEG (35) DP 176860	POST (36) DP 176860	ob63	0°58'00"	A DP 176860	0°00'00"	43.15 A DP 176860		Class B
POST (36) DP 176860	POST (37) DP 176860	ob64	285°10'00"	A DP 176860	0°00'00"	17.62 A DP 176860		Class B
POST (37) DP 176860	POST (38) DP 176860	ob65	254°15'00"	A DP 176860	0°00'00"	40.14 A DP 176860		Class B
POST (38) DP 176860	POST (39) DP 176860	ob66	317°27'00"	A DP 176860	0°00'00"	51.74 A DP 176860		Class B
POST (39) DP 176860	POST (40) DP 176860	ob67	5°24'00"	A DP 176860	0°00'00"	54.46 A DP 176860		Class B
POST (40) DP 176860	POST (41) DP 176860	ob68	283°16'00"	A DP 176860	0°00'00"	88.06 A DP 176860		Class B
POST (41) DP 176860	POST (42) DP 176860	ob69	323°00'00"	A DP 176860	0°00'00"	43.68 A DP 176860		Class B
POST (42) DP 176860	POST (43) DP 176860	ob70	51°16'30"	A DP 176860	0°00'00"	100.65 A DP 176860		Class B
POST (43) DP 176860	POST (44) DP 176860	ob71	299°55'00"	A DP 176860	0°00'00"	42.86 A DP 176860		Class B
POST (44) DP 176860	POST (45) DP 176860	ob72	328°41'00"	A DP 176860	0°00'00"	22.52 A DP 176860		Class B
POST (45) DP 176860	PEG (46) DP 176860	ob73	307°13'00"	A DP 176860	0°00'00"	45.12 A DP 176860		Class B
PEG (46) DP 176860	POST (47) DP 176860	ob74	307°41'00"	A DP 176860	0°00'00"	52.20 A DP 176860		Class B
POST (47) DP 176860	POST (48) DP 176860	ob75	274°24'00"	A DP 176860	0°00'00"	11.59 A DP 176860		Class B
POST (48) DP 176860	POST (49) DP 176860	ob76	256°40'00"	A DP 176860	0°00'00"	25.83 A DP 176860		Class B
POST (49) DP 176860	POST(50) DP 176860	ob77	273°14'00"	A DP 176860	0°00'00"	39.06 A DP 176860		Class B
POST(50) DP 176860	POST (51) DP 176860	ob78	240°02'00"	A DP 176860	0°00'00"	36.50 A DP 176860		Class B
POST (51) DP 176860	POST (52) DP 176860	ob79	207°14'00"	A DP 176860	0°00'00"	21.14 A DP 176860		Class B
PEG 2 DP 584237	POST 1 DP 584237	ob25	82°16'00"	C		65.28 C		Class B

Mark and Vector

Survey Number DP 584237

Meridional Circuit Mount Eden 2000

From	To	Code	Bearing	Adpt Surv	Bearing Correction	Distance	Adpt Surv	Class
IT IX DP 176860	UNMK 5 DP 584237	ob11	348°19'40"	C		234.45 C		
IT IX DP 176860	UNMK 6 DP 584237	ob12	329°32'20"	C		369.40 C		
IT IX DP 176860	UNMK 7 DP 584237	ob13	325°32'00"	C		367.60 C		
IT IX DP 176860	UNMK 8 DP 584237	ob14	322°03'00"	C		377.19 C		
POST 1 DP 584237	PEG (5) DP 176860	ob21	83°53'00"	C		33.74 C		Class B
IS II DP 42956	IS I DP 42956	ob30	269°06'30"	A DP 42956	0°00'00"	73.01 A DP 42956		
IS I DP 42956	IS X DP 42956	ob84	153°43'20"	A DP 42956	0°00'00"	8.25 A DP 42956		
POST (52) DP 176860	POST (53) DP 176860	ob80	200°12'00"	A DP 176860	0°00'00"	17.12 A DP 176860		Class B
POST (53) DP 176860	UNMK (54) DP 176860	ob85	336°10'30"	A DP 176860	0°00'00"	112.00 A DP 176860		Class BD

Mark Name	Mark Condition	Description
IT DP 32055		on knoll, buried 0.2m deep
IT II DP 584237		OIT V SO 43015 disturbed
IT III DP 176860		in lawn, buried 0.25m deep
IT IV DP 176860		in paddock, buried 0.2m deep
PEG (5) DP 176860		0.1m S fnc +30 yrs old
PEG 2 DP 584237		2m W post 25 yrs old
PEG 3 DP 584237		2.8m SW of fnc 25 yrs old
PEG 4 DP 584237		OPEG DP 176860 disturbed
POST 1 DP 584237		disk on post +30 yrs old

*** End of Report ***

Schedule / Memorandum

Land Registration District

North Auckland

Survey Number

LT 584237

Territorial Authority (the Council)

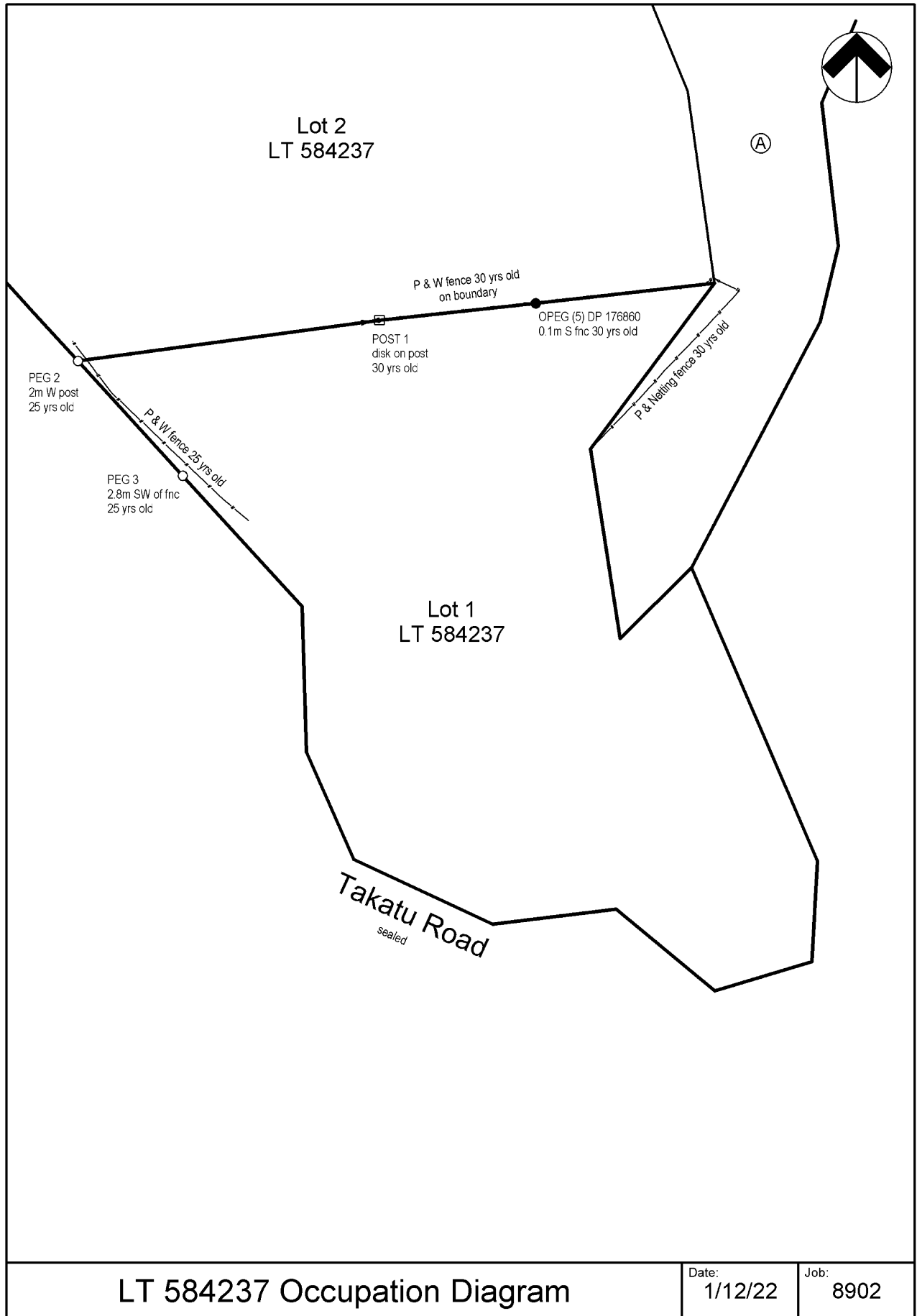
Auckland Council

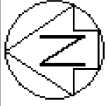
Notes

Last Edited: 01 Dec 2022 15:27:17

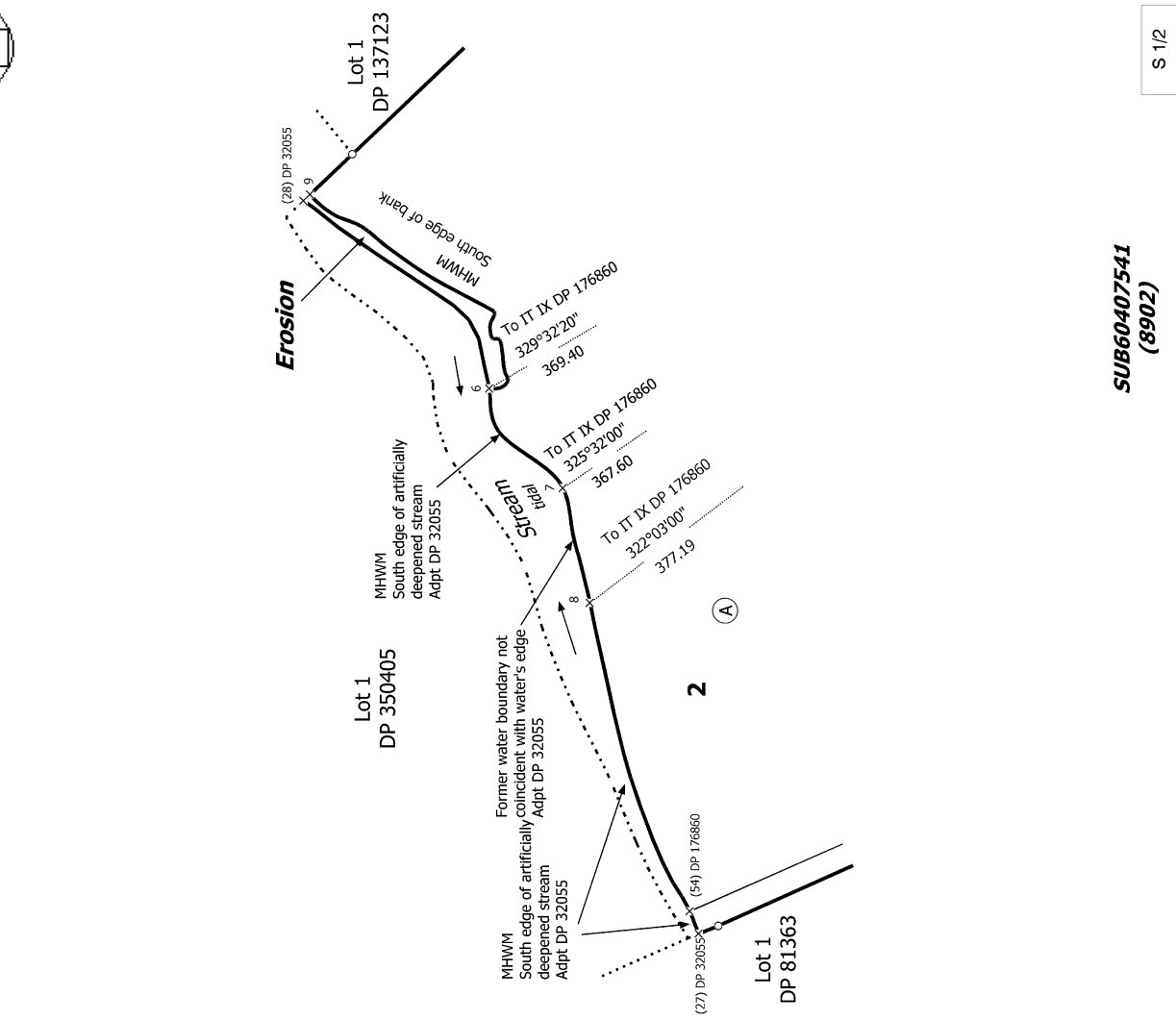
Area A is subject to a Land Covenant (native bush protection) created by Bond D174804.6

Occupation Diagram





Diag. AA



SUB60407541 (8902)

S 1/2

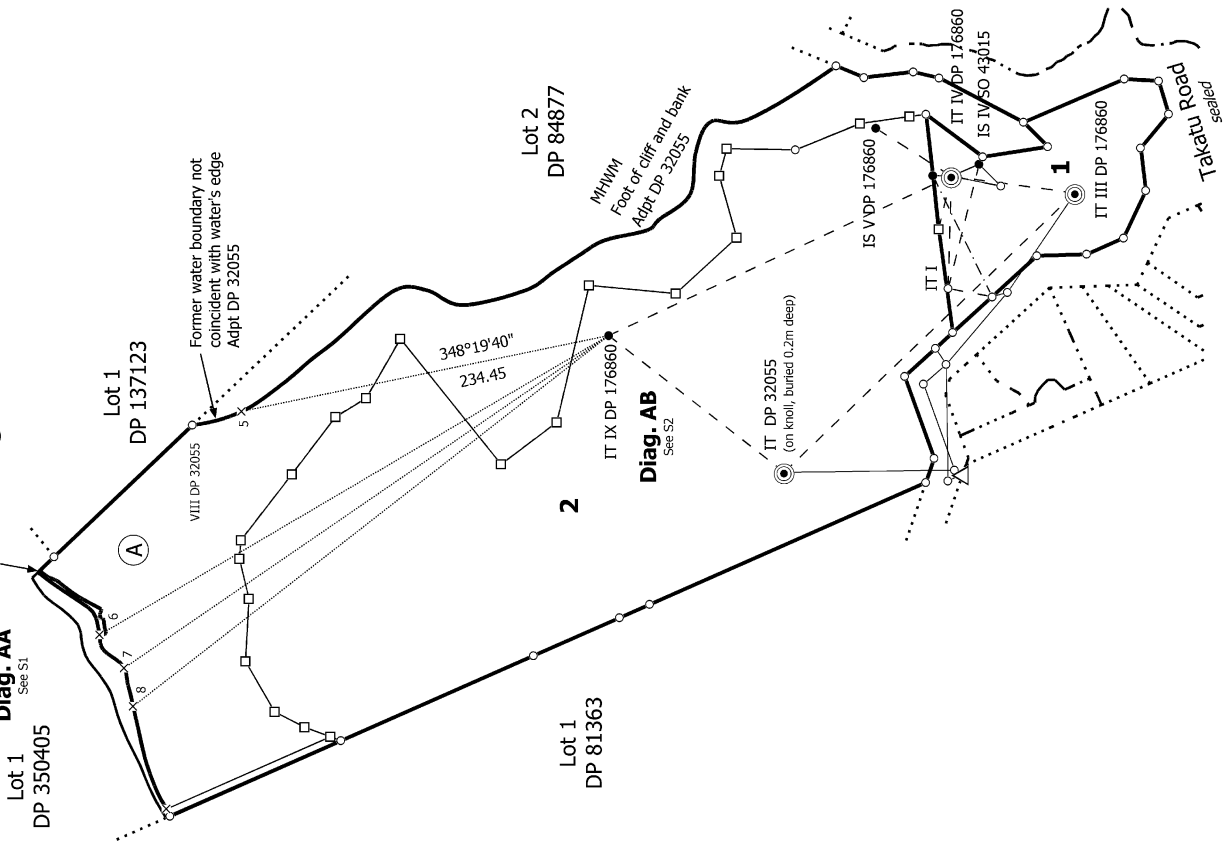
Record of Survey DP 584237
Deposited on: 8/02/2023

Surveyor: Daniel John Chapman
Firm: Buckton Consulting Surveyors Limite
Date of Survey: 30/11/2022

Plan of Lots 1 and 2 being a Subdivision of Lots 1 and 2 DP 176860

Land District: North Auckland
Digitally Generated Plan
Generated on: 22/03/2023 07:39am Page 9 of 12

Diag. A



Lot 1 DP 350405
Diag. AA See S1

Diag. AB

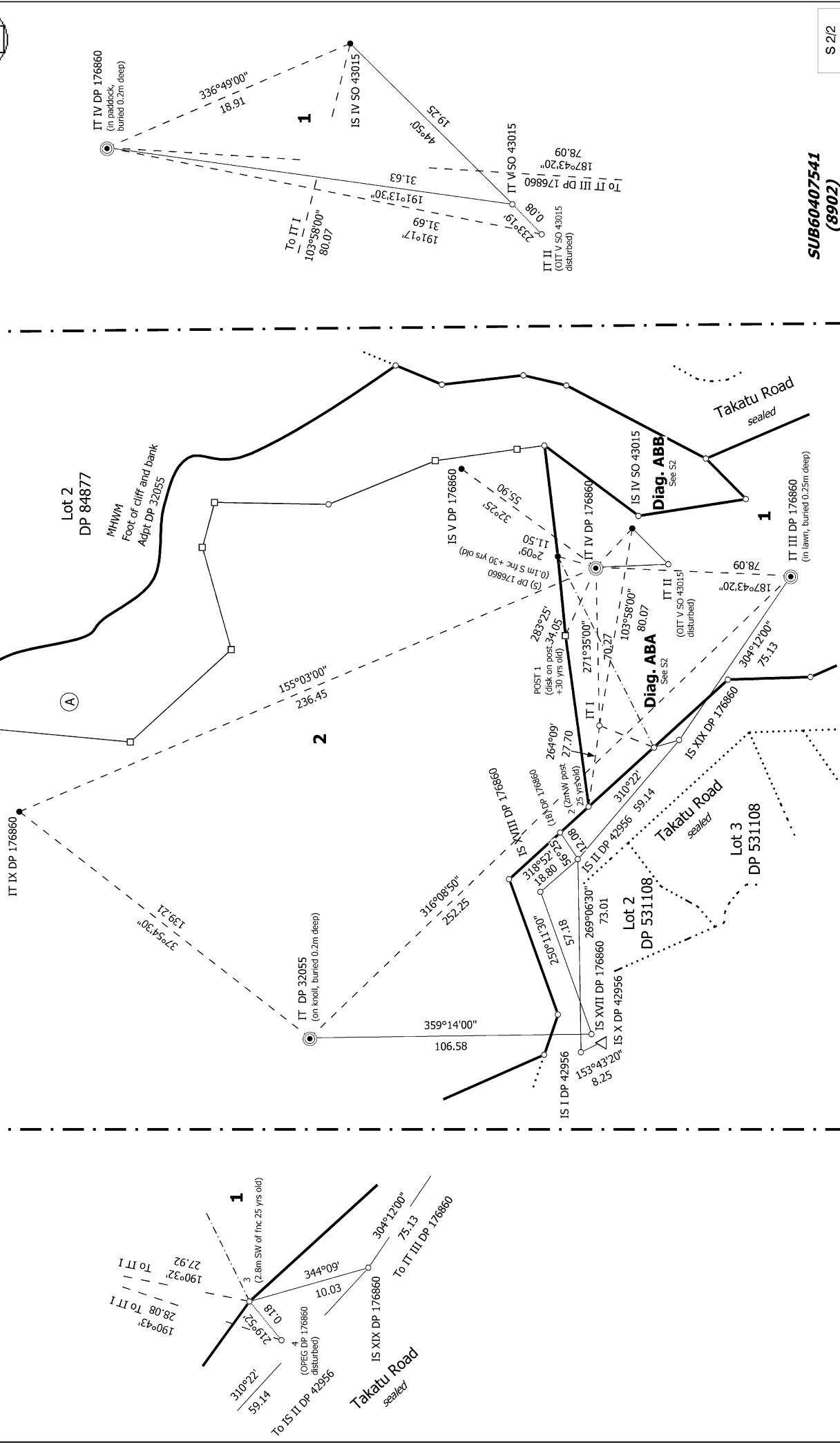
See S2



Diag. ABB
Distorted

Diag. AB
Distorted

Diag. ABA
Distorted



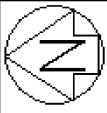
SUB60407541
(8902)

Land District: North Auckland
Digitally Generated Plan
Generated on: 22/03/2023 07:39am Page 10 of 12

Surveyor: Daniel John Chapman
Firm: Buckton Consulting Surveyors Limited
Date of Survey: 30/11/2022

Plan of Lots 1 and 2 being a Subdivision of Lots 1 and 2 DP 176860

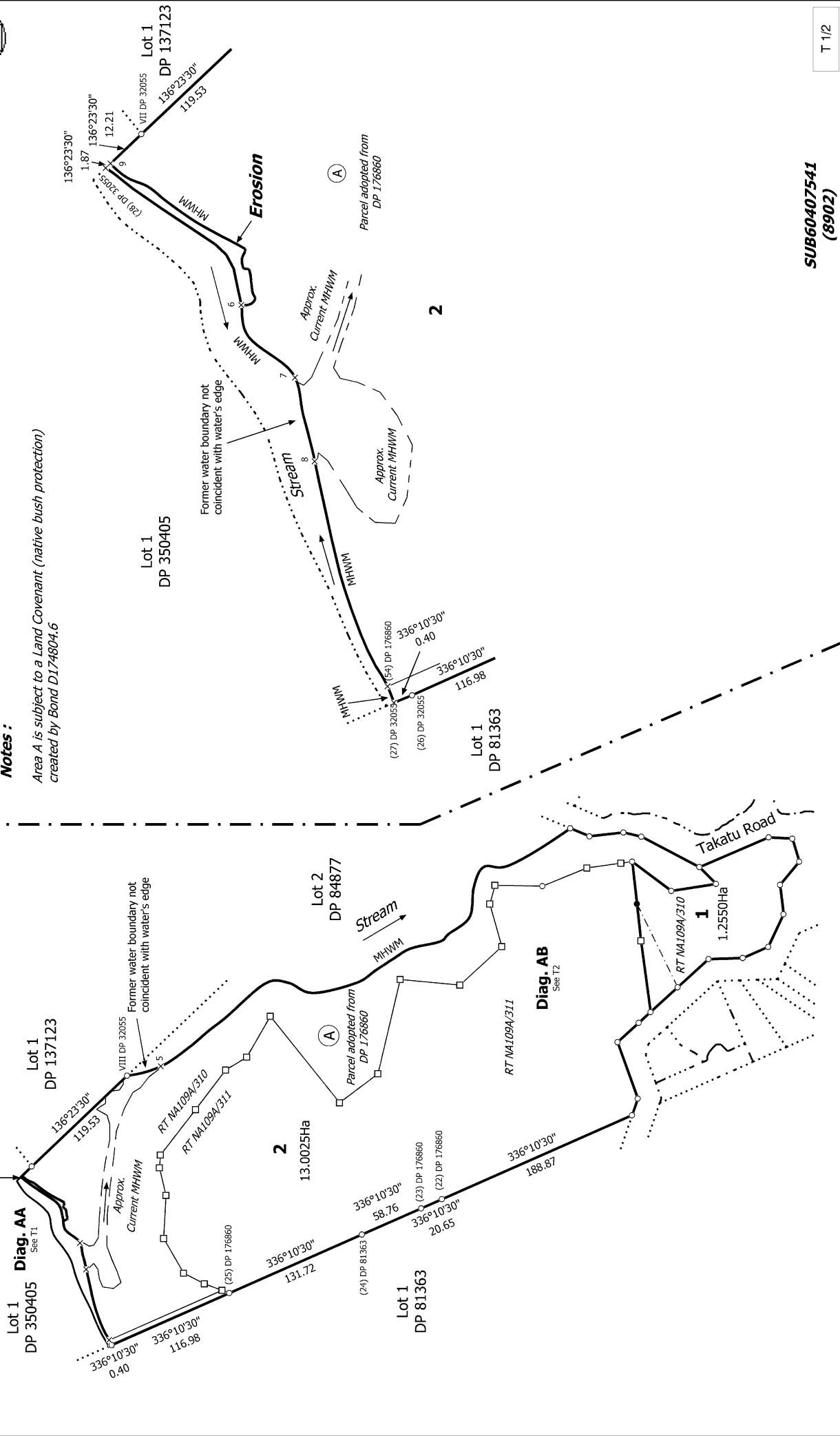
Record of Survey
DP 584237
Deposited on: 8/02/2023



Diag. AA
Distorted

Notes :

Area A is subject to a Land Covenant (native bush protection) created by Bond D174804.6



SUB60407541
(8902)

T 1/2

Land District: North Auckland

Digitally Generated Plan

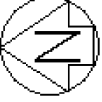
Generated on: 22/03/2023 07:39am | Page 11 of 12

Plan of Lots 1 and 2 being a Subdivision of Lots 1 and 2 DP 176860

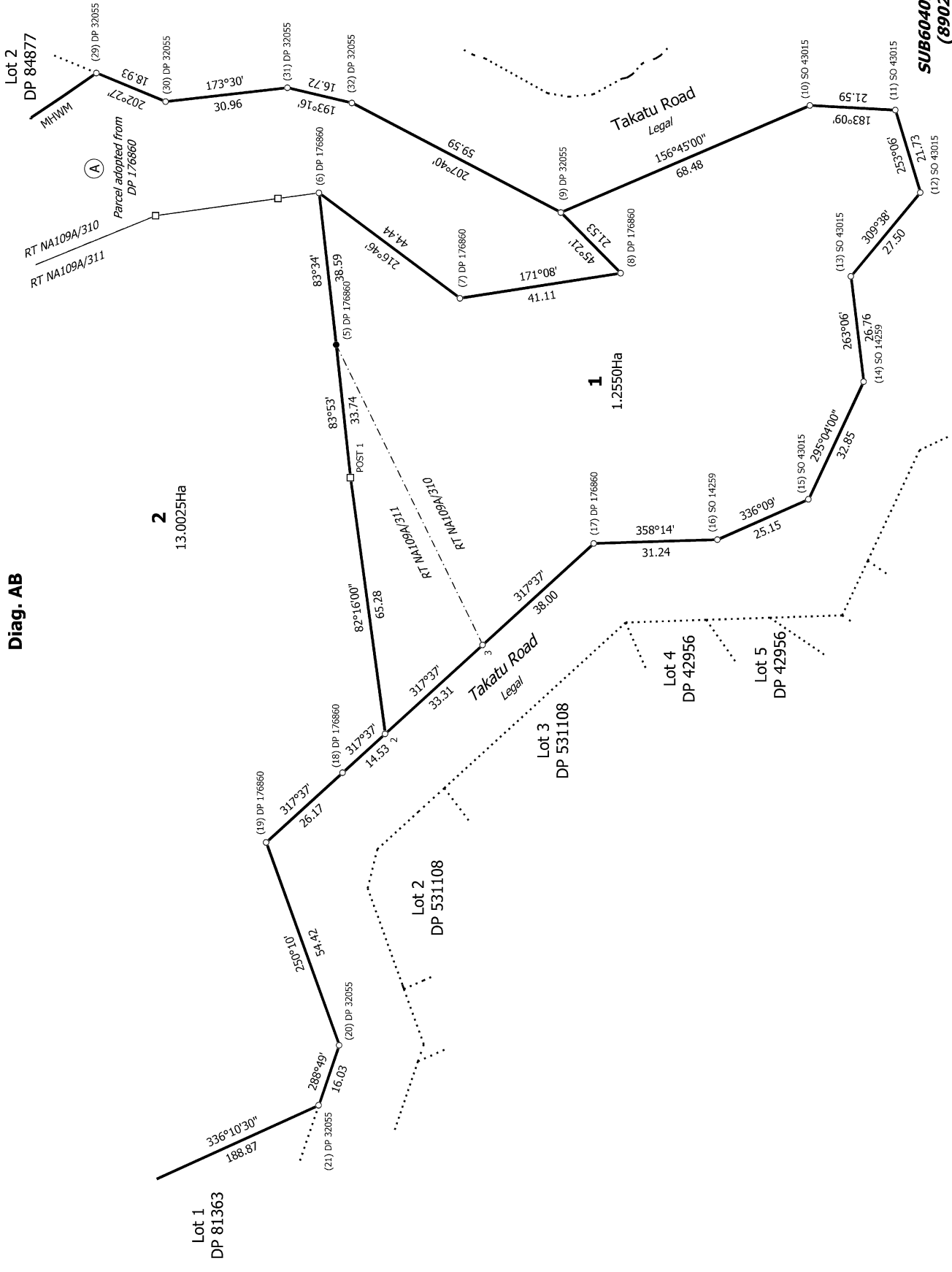
Surveyor: Daniel John Chapman
Firm: Buckton Consulting Surveyors Limited
Date of Survey: 30/11/2022

Record of Survey
DP 584237

Deposited on: 8/02/2023



Diag. AB



T 2/2

Record of Survey
DP 584237

Deposited on: 8/02/2023

Surveyor: Daniel John Chapman
Firm: Buckton Consulting Surveyors Limited
Date of Survey: 30/11/2022

Plan of Lots 1 and 2 being a Subdivision of Lots 1 and 2 DP 176860

Land District: North Auckland

Digitally Generated Plan
Generated on: 22/03/2023 07:39am | Page 12 of 12