



Record of Survey - DP 584447

Survey Number DP 584447
Surveyor Reference Sturland, 27 Taft St
Surveyor Felix Benjamin Zwartz
Survey Firm Ben Zwartz Land Surveyor Ltd
Surveyor Declaration I Felix Benjamin Zwartz, being a licensed cadastral surveyor, certify that--
(a) this dataset provided by me and its related survey are accurate, correct and in accordance with the Cadastral Survey Act 2002 and Cadastral Survey Rules 2021; and
(b) the survey was undertaken by me or under my personal direction.
Declared on 13 Dec 2022 01:40 PM

Survey Details

Dataset Description Lots 1 and 2 being the subdivision of Part Lots 63 and 70 DP 392
Purpose LT Subdivision
Status Deposited **Type** Survey
Land District Wellington **Survey Class** Class A
Meridional Circuit Wellington 2000 **Vertical Datum** None

Survey Dates

Surveyed Date 01/11/2022 **Certified Date** 13/12/2022
Submitted Date 13/12/2022 13:40:14 **Survey Approval Date** 19/12/2022
Deposit Date 24/02/2023

Referenced Surveys

Survey Number	Land District	Bearing Correction
SO 17684	Wellington	0°00'00"
DP 13247	Wellington	0°00'00"
DP 9328	Wellington	0°00'00"
DP 14357	Wellington	0°00'00"
DP 392	Wellington	0°00'00"
DP 82468	Wellington	0°00'00"
DP 58470	Wellington	0°00'00"
SO 450747	Wellington	0°00'00"
DP 526719	Wellington	0°00'00"
SO 563449	Wellington	0°00'00"
DP 472674	Wellington	0°00'00"

Territorial Authorities

Wellington City

Comprised In

RT WN160/252
RT WN424/255



Record of Survey - DP 584447

Created Parcels

Parcels	Parcel Intent	Area	RT Reference
Lot 1 Deposited Plan 584447	Fee Simple Title	0.0262 Ha	1099297
Lot 2 Deposited Plan 584447	Fee Simple Title	0.0524 Ha	1099298
Total Area		<u>0.0786 Ha</u>	

Mark and Vector

Survey Number DP 584447

Meridional Circuit Wellington 2000

From	To	Code	Bearing	Adpt Surv	Bearing Correction	Distance	Adpt Surv	Class
IR I SO 563449	LP 4 SO 450747	ob11	357°06'00" M			66.67 M		
LP 4 SO 450747	NAIL 1 DP 584447	ob8	187°29'30" M			36.18 M		
NAIL 1 DP 584447	SPS 2 DP 584447	ob49	181°44'00" M			31.77 M		
SPS 2 DP 584447	IR I SO 563449	ob52	83°26'53" M			9.11 M		
SPS 2 DP 584447	NAIL 3 DP 584447	ob53	13°23'00" M			60.15 M		
NAIL 3 DP 584447	NAIL 1 DP 584447	ob55	205°51'00" M			29.74 M		
IR I SO 563449	NAIL 1 DP 584447	ob12	345°15'00" M			31.77 M		
NAIL 1 DP 584447	IR 4 DP 584447	ob50	211°12'00" M			20.56 M		
IR 4 DP 584447	SPS 2 DP 584447	ob60	145°36'30" M			17.17 M		
NAIL 3 DP 584447	IS II DP 472674	ob56	267°11'55" M			94.76 M		
IS II DP 472674	IT I DP 23688	ob2	169°20'30" A	DP 526719	0°00'00"	220.74 A	DP 526719	
IT I DP 23688	IS II SO 563449	ob37	19°37'20" A	SO 563449	0°00'00"	90.71 A	SO 563449	
IS II SO 563449	IR I SO 563449	ob14	13°13'40" M			80.78 M		
IS II DP 472674	IS 3 DP 526719	ob3	151°07'20" A	DP 526719	0°00'00"	115.90 A	DP 526719	
IS 3 DP 526719	NAIL 1 DP 526719	ob15	174°12'30" A	DP 526719	0°00'00"	16.85 A	DP 526719	
NAIL 1 DP 526719	IT I DP 23688	ob16	189°41'15" A	DP 526719	0°00'00"	100.11 A	DP 526719	
NAIL 1 DP 526719	DISK 17 DP 526719	ob17	189°32'00" A	DP 526719	0°00'00"	1.83 A	DP 526719	
DISK 17 DP 526719	PEG 1 DP 9328	ob24	335°34'30" A	DP 526719	0°00'00"	16.74 A	DP 526719	
PEG 1 DP 9328	PEG 2 DP 9328	ob20	335°34'30" A	DP 9328	0°00'00"	18.73 A	DP 9328	
PEG 2 DP 9328	PEG 3 DP 13247	ob26	325°20'30" A	DP 13247	0°00'00"	4.73 A	DP 13247	
PEG 3 DP 13247	PEG 1 DP 13247	ob21	325°20'30" A	DP 13247	0°00'00"	25.79 A	DP 13247	
PEG 1 DP 13247	LP III DP 13247	ob22	112°46'30" A	DP 13247	0°00'00"	6.48 A	DP 13247	
LP III DP 13247	IT IV DP 58470	ob1	45°40'00" A	DP 58470	0°00'00"	7.26 A	DP 58470	
IT IV DP 58470	IS II DP 58470	ob0	0°55'00" A	DP 58470	0°00'00"	62.99 A	DP 58470	
IS II DP 58470	IT II DP 14357	ob39	93°00'40" A	DP 58470	0°00'00"	7.29 A	DP 58470	
IT II DP 14357	IS III DP 14357	ob6	89°13'30" A	DP 14357	0°00'00"	12.87 A	DP 14357	
IS III DP 14357	NAIL 3 DP 584447	ob41	86°59'30" M			37.03 M		
IT II DP 14357	PEG (1) DP 58470	ob7	159°10'00" A	DP 58470	0°00'00"	8.29 A	DP 58470	
PEG (1) DP 58470	PEG (1) DP 58470	ob34	184°22'00" A	DP 58470	0°00'00"	50.24 A	DP 58470	

Mark and Vector

Survey Number DP 584447

Meridional Circuit Wellington 2000

From	To	Code	Bearing	Adpt Surv	Bearing Correction	Distance	Adpt Surv	Class
PEG (1) DP 58470	IT IV DP 58470	ob28	237°20'00"	A DP 58470	0°00'00"	8.80 A	DP 58470	
PEG (1) DP 58470	DISK D DP 584447	ob35	94°22'00"	A DP 392	0°00'00"	21.98 C		
DISK D DP 584447	PEG E DP 584447	ob18	94°22'00"	A DP 392	0°00'00"	8.99 C		Class A
PEG E DP 584447	PEG (2) DP 82468	ob29	94°22'00"	A DP 392	0°00'00"	20.12 A	DP 392	
PEG (2) DP 82468	IT I DP 82468	ob5	296°31'00"	A DP 82468	0°00'00"	10.15 A	DP 82468	
IT I DP 82468	IT III SO 563449	ob9	13°08'00"	A SO 563449	0°00'00"	0.12 A	SO 563449	
IT III SO 563449	LP 4 SO 450747	ob10	349°52'00"	A SO 563449	0°00'00"	18.50 A	SO 563449	
PEG 2 DP 9328	PEG (8) DP 392	ob27	60°27'00"	A DP 58470	0°00'00"	12.23 A	DP 58470	
PEG (8) DP 392	PEG G DP 584447	ob33	325°24'40"	A DP 58470	0°00'00"	21.14 C		
PEG G DP 584447	PEG (3) DP 392	ob36	325°24'40"	A DP 58470	0°00'00"	11.77 C		Class A
PEG (3) DP 392	PEG (1) DP 58470	ob25	94°22'00"	A DP 58470	0°00'00"	9.28 A	DP 58470	Class A
DISK D DP 584447	UNMK C DP 584447	ob19	184°22'00"	C		29.16 C		Class A
UNMK C DP 584447	PEG F DP 584447	ob40	184°22'00"	C		21.08 C		Class A
PEG F DP 584447	PEG (1) DP 58470	ob23	274°22'00"	C		21.98 C		Class A
PEG E DP 584447	PEG A DP 584447	ob30	184°22'00"	C		29.16 C		Class A
PEG A DP 584447	PEG (1) SO 17684	ob46	184°22'00"	C		21.08 C		Class A
PEG (1) SO 17684	PEG F DP 584447	ob31	274°22'00"	C		8.99 C		
PEG (1) SO 17684	PEG (2) SO 17684	ob32	184°22'00"	C		9.14 C		Class A
PEG (2) SO 17684	PEG G DP 584447	ob48	274°21'30"	C		32.82 C		Class A
PEG A DP 584447	PEG B DP 584447	ob47	274°22'00"	C		8.45 C		Class A
PEG B DP 584447	UNMK C DP 584447	ob64	274°22'00"	C		0.54 C		Class A
IR 4 DP 584447	PEG A DP 584447	ob61	60°34'00"	M		6.19 M		
IR 4 DP 584447	PEG B DP 584447	ob62	320°34'00"	M		4.77 M		
NAIL 3 DP 584447	LP 4 SO 450747	ob57	317°49'00"	M		12.29 M		
NAIL 3 DP 584447	LP 3 SO 450747	ob58	345°15'00"	M		38.12 M		

Mark and Vector

Survey Number DP 584447

Meridional Circuit Wellington 2000

From	To	Code	Bearing	Adpt Surv	Bearing Correction	Distance	Adpt Surv	Class
LP 3 SO 450747	LP 4 SO 450747	ob38	177°00'20"	A SO 450747	0°00'00"	27.80 A	SO 450747	
IR I SO 563449	LP 3 SO 450747	ob13	357°04'20"	M		94.47 M		
SPS 2 DP 584447	BROOKLYN TURBINE SO 532954	ob54	263°26'53"	M				
NAIL 1 DP 584447	BROOKLYN TURBINE SO 532954	ob51	262°20'04"	M				
NAIL 3 DP 584447	BROOKLYN TURBINE SO 532954	ob59	261°27'44"	M				
IS III DP 14357	BROOKLYN TURBINE SO 532954	ob42	261°19'46"	M				
IS III DP 14357	IS II DP 472674	ob43	267°20'00"	M		57.73 M		
IS II DP 472674	NAIL 5 DP 584447	ob4	267°20'00"	M		3.47 M		
NAIL 5 DP 584447	NAIL 6 DP 584447	ob65	152°04'30"	M		69.66 M		
NAIL 6 DP 584447	SPS 2 DP 584447	ob67	81°22'30"	M		52.15 M		
NAIL 5 DP 584447	IS 10 DP 432986	ob66	275°02'00"	M		48.50 M		
IS 10 DP 432986	IS II DP 472674	ob69	94°31'20"	A DP 472674	0°00'00"	51.94 A	DP 472674	
IS III DP 14357	DISK D DP 584447	ob44	128°39'00"	M		15.37 M		
IS III DP 14357	PEG E DP 584447	ob45	116°07'00"	M		23.35 M		
IR 4 DP 584447	PEG F DP 584447	ob63	196°42'00"	M		18.05 M		
NAIL 6 DP 584447	PEG G DP 584447	ob68	102°06'00"	M		12.47 M		

Mark Name	Mark Condition	Description
DISK D DP 584447		base of conc. step 100yrs
IR 4 DP 584447		-0.1
IR I SO 563449		-0.1
IS II DP 472674		flush in footpath
IS II SO 563449		centre of paint lines
IS III DP 14357		-0.1
LP 3 SO 450747		In kerb
LP 4 SO 450747		Flush in kerb, 0.66 south to sump
NAIL 1 DP 584447		In sealed FP
NAIL 3 DP 584447		In seal

Mark and Vector

Survey Number DP 584447

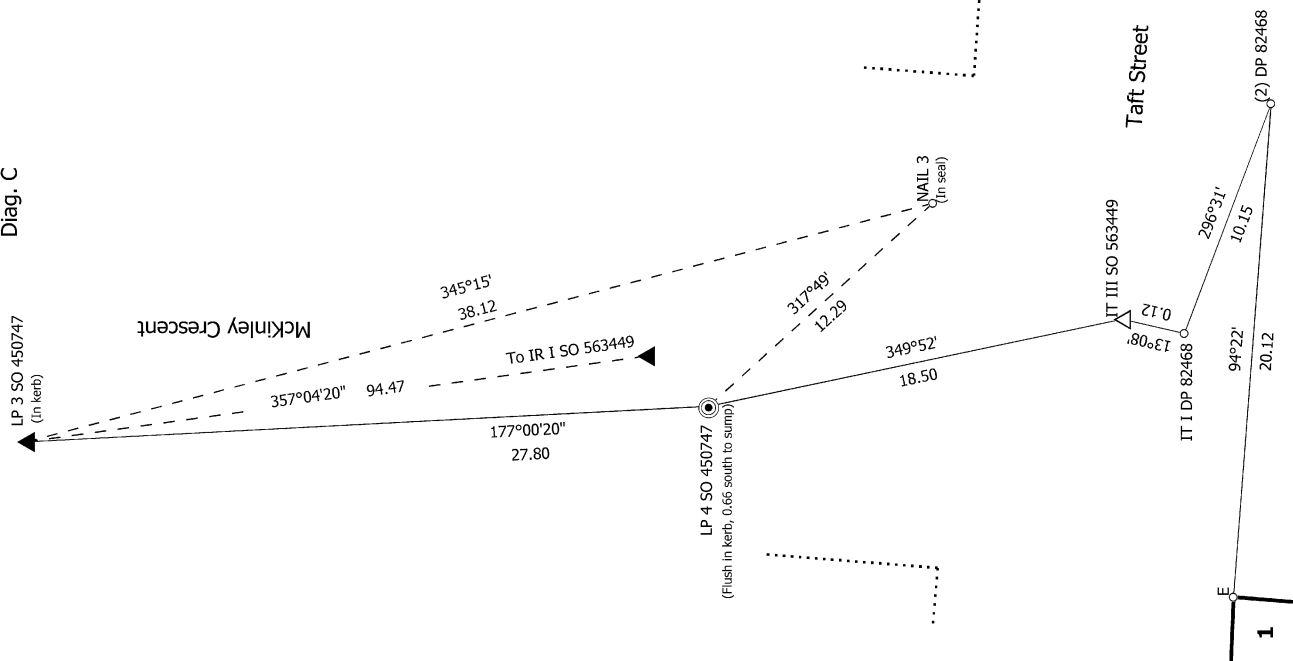
Meridional Circuit Wellington 2000

Mark Name	Mark Condition	Description
NAIL 5 DP 584447		In seal
NAIL 6 DP 584447		In fp
PEG A DP 584447		Base of bank
PEG B DP 584447		0.3m east of fence 20yrs
PEG E DP 584447		1.0m east of end of wall
PEG F DP 584447		1.7m north of house 110yrs
SPS 2 DP 584447		In conc. FP
IS II DP 58470	Searched For and Not Found	
IT II DP 14357	Searched For and Not Found	
LP III DP 13247	Searched For and Not Found	

*** End of Report ***



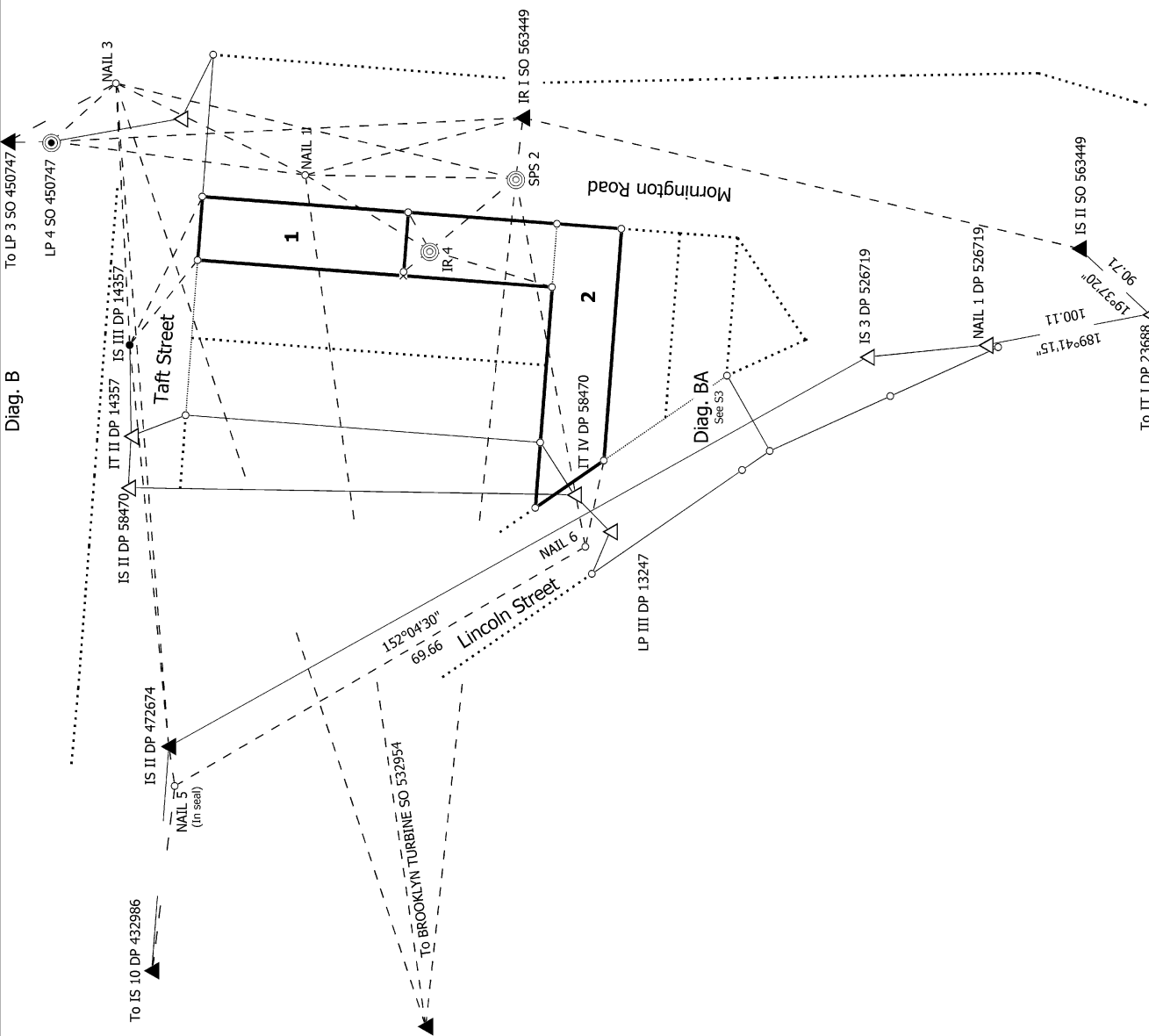
Diag. C



Record of Survey
DP 584447
Deposited on: 24/02/2023

Surveyor: Felix Benjamin Zwartz
Firm: Ben Zwartz Land Surveyor Ltd
Date of Survey: 1/11/2022

Diag. B



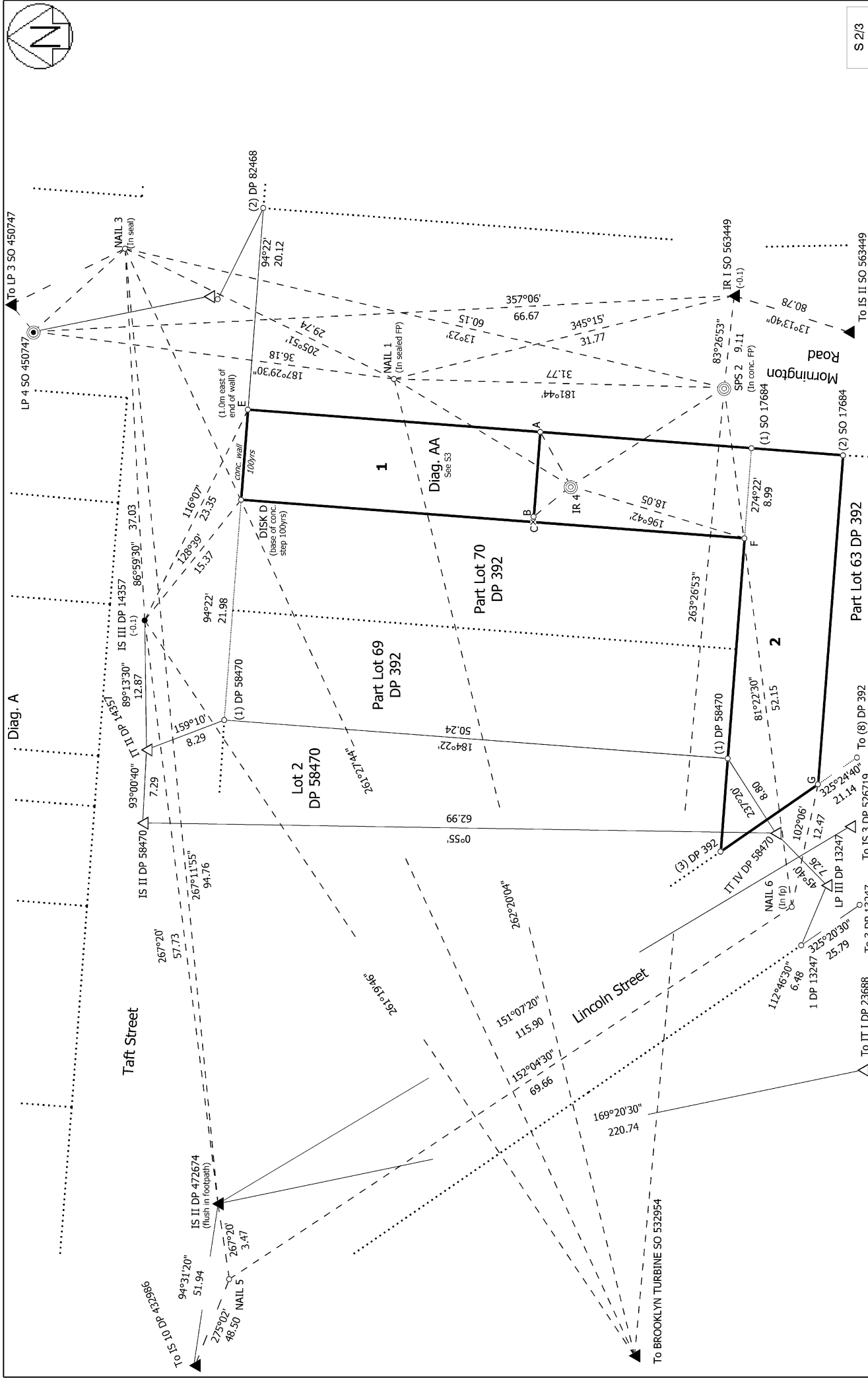
Diag. BA
See S3

Lots 1 and 2 being the subdivision of Part Lots 63 and 70 DP 392

Land District: Wellington

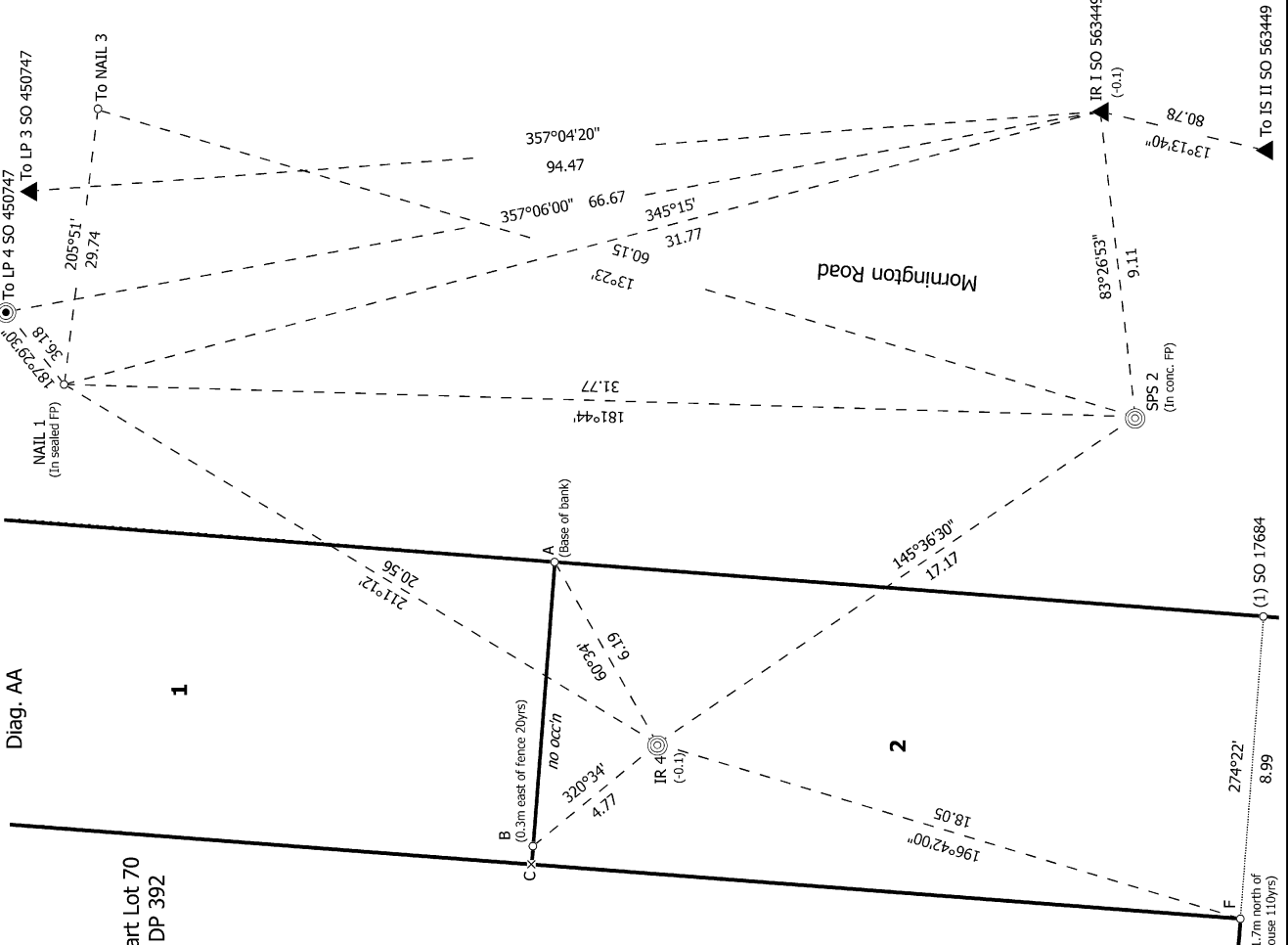
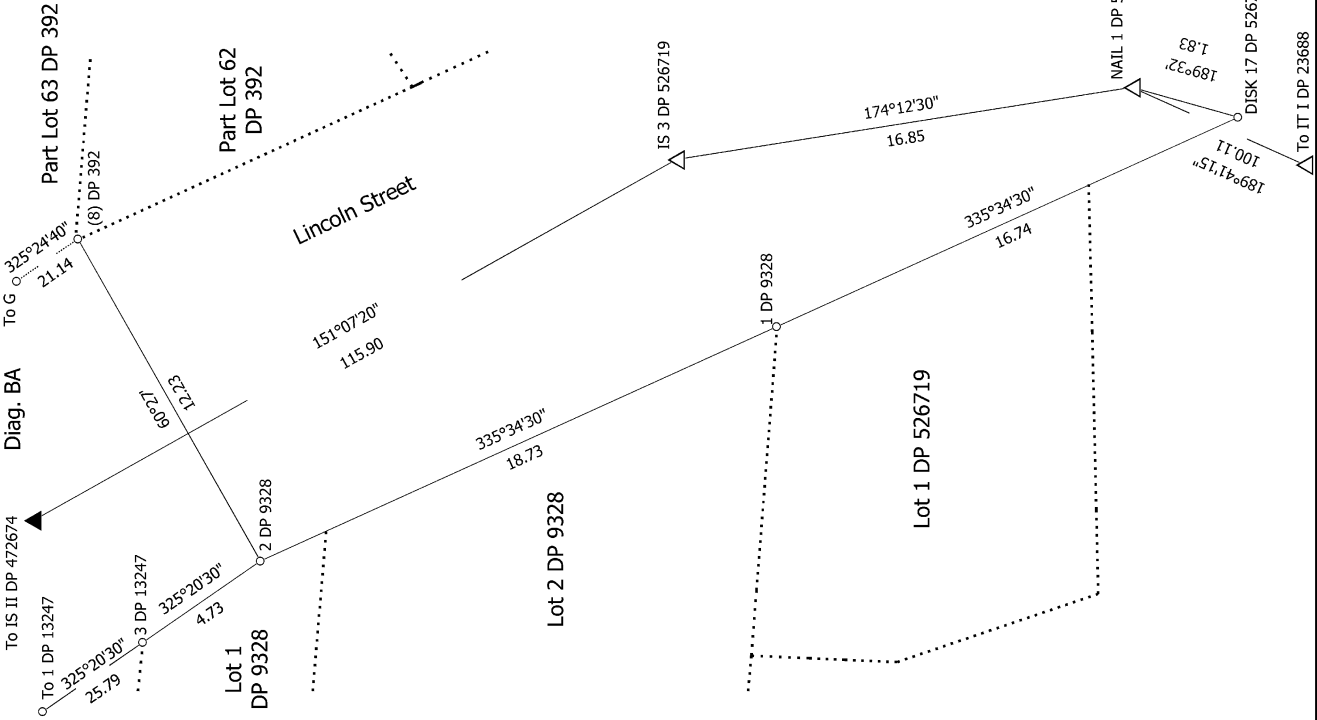
Digitally Generated Plan

Generated on: 09/03/2023 09:19am Page 7 of 10

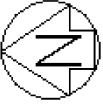


S 2/3

Land District: Wellington	Surveyor: Felix Benjamin Zwartz Firm: Ben Zwartz Land Surveyor Ltd Date of Survey: 1/11/2022	Record of Survey DP 584447 Deposited on: 24/02/2023
<p style="text-align: center;">Lots 1 and 2 being the subdivision of Part Lots 63 and 70 DP 392</p> <p style="text-align: center;">Digitally Generated Plan Generated on: 09/03/2023 09:13am Page 8 of 10</p>		



S 3/3	Record of Survey DP 584447	Deposited on: 24/02/2023
Lots 1 and 2 being the subdivision of Part Lots 63 and 70 DP 392		
Land District: Wellington	Surveyor: Felix Benjamin Zwartz Firm: Ben Zwartz Land Surveyor Ltd Date of Survey: 1/11/2022	Digitally Generated Plan Generated on: 09/03/2023 09:19am Page 9 of 10



Taft Street

Diag. A

Lot 2 DP 58470

Part Lot 69 DP 392

Part Lot 70 DP 392

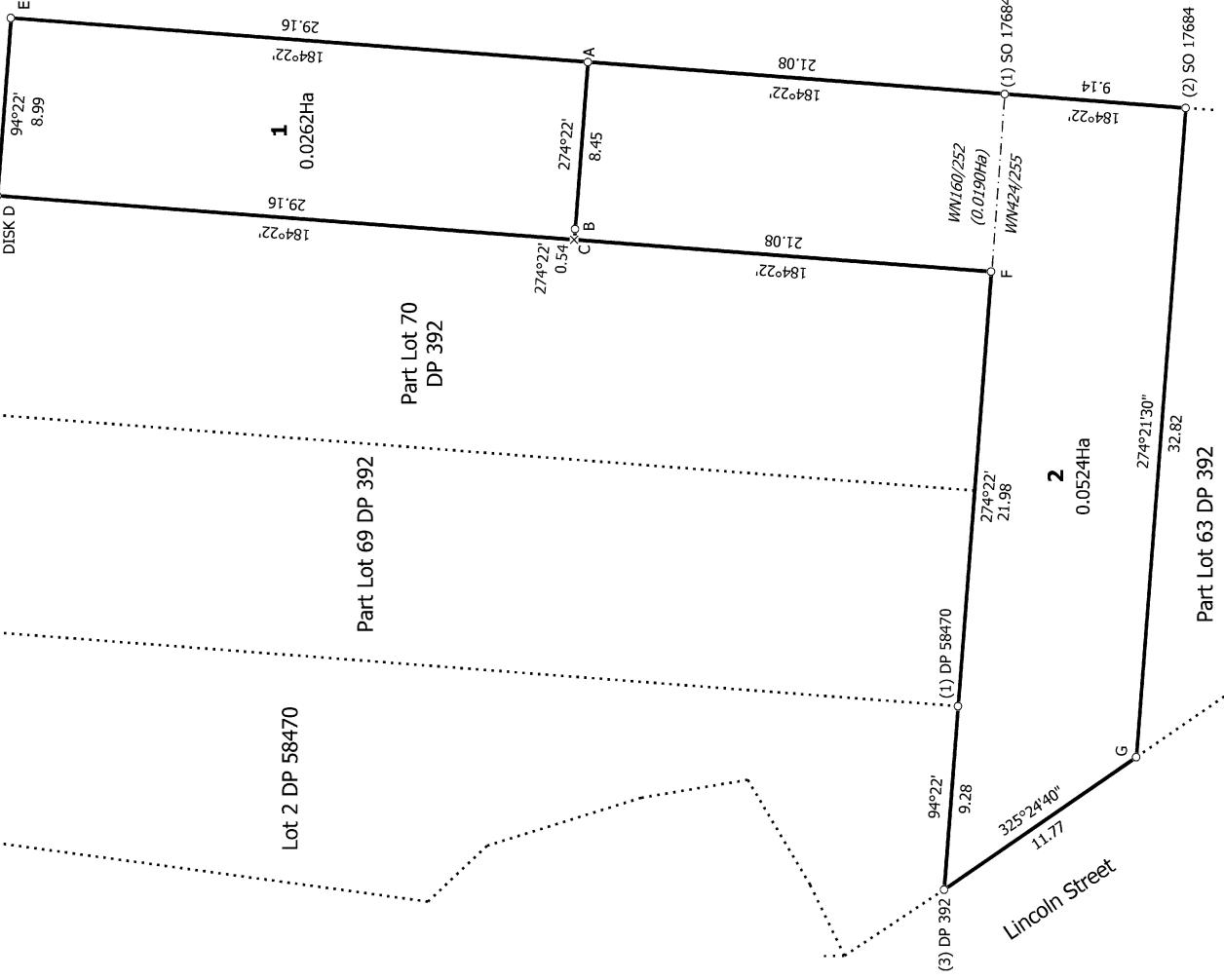
1
0.0262Ha

Morrington Road

Lincoln Street

2
0.0524Ha

Part Lot 63 DP 392



T 1/1

Land District: Wellington

Digitally Generated Plan

Generated on: 09/03/2023 09:19am | Page 10 of 10

Lots 1 and 2 being the subdivision of Part Lots 63 and 70 DP 392

Surveyor: Felix Benjamin Zwartz
Firm: Ben Zwartz Land Surveyor Ltd
Date of Survey: 1/11/2022

Record of Survey
DP 584447

Deposited on: 24/02/2023