

# Record of Survey - LT 548734

**Survey Number** LT 548734  
**Surveyor Reference** 200264 - Unison - Ray Boord Park  
**Surveyor** Nicholas Gordon Davies  
**Survey Firm** Cheal Consultants Limited  
**Surveyor Declaration** I Nicholas Gordon Davies, being a licensed cadastral surveyor, certify that--  
 (a) this dataset provided by me and its related survey are accurate, correct and in accordance with the Cadastral Survey Act 2002 and Cadastral Survey Rules 2021; and  
 (b) the survey was undertaken by me or under my personal direction.  
 Declared on 06 Apr 2023 04:31 PM

## Survey Details

**Dataset Description** Easements over Lot 1 DPS 85149, Lot 2 DPS 77489, Lot 1 DPS 81599, Lot 5 DPS 10858 and Lot 1 DPS 10858  
**Purpose** Easement  
**Status** Approved as to Survey **Type** Parcels without Survey Information  
**Land District** South Auckland **Survey Class** Class A  
**Meridional Circuit** Bay of Plenty 1949 **Vertical Datum** None

## Survey Dates

**Surveyed Date** 21/04/2020 **Certified Date** 06/04/2023  
**Submitted Date** 06/04/2023 16:31:24 **Survey Approval Date** 12/04/2023  
**Deposit Date**

## Referenced Surveys

Survey Number	Land District	Bearing Correction
LTS 10364	South Auckland	-0°00'40"
DPS 77489	South Auckland	0°00'00"
DPS 39684	South Auckland	0°00'00"

## Territorial Authorities

Rotorua District

## Comprised In

RT SA61C/444  
 RT SA61C/443  
 RT SA64B/309  
 RT 437822  
 RT SA6C/420

## Created Parcels

Parcels	Parcel Intent	Area	RT Reference
Area A Deposited Plan 548734	Easement		
Area B Deposited Plan 548734	Easement		
Area C Deposited Plan 548734	Easement		
Area D Deposited Plan 548734	Easement		



# Record of Survey - LT 548734

---

## Created Parcels

Parcels	Parcel Intent	Area	RT Reference
Area E Deposited Plan 548734	Easement		
<b>Total Area</b>		<hr/> 0.0000 Ha	

# Mark and Vector

Survey Number DP 548734

Meridional Circuit Bay of Plenty 1949

From	To	Code	Bearing	Adpt Surv	Bearing Correction	Distance	Adpt Surv	Class
PEG DPS 77489	UNMK 57 DP 548734	ob0	313°32'00"	A DPS 77489	0°00'00"	1.30 C		
UNMK 57 DP 548734	UNMK 56 DP 548734	ob31	313°32'00"	A DPS 77489	0°00'00"	7.46 C		Class A
UNMK 56 DP 548734	DISC DPS 77489	ob29	313°32'00"	A DPS 77489	0°00'00"	140.86 C		
PEG (2) LTS 10364	UNMK 58 DP 548734	ob2	359°22'00"	A LTS 10364	-0°00'40"	0.52 C		
UNMK 58 DP 548734	UNMK 59 DP 548734	ob33	359°22'00"	A LTS 10364	-0°00'40"	9.02 C		Class A
UNMK 59 DP 548734	PEG DPS 77489	ob35	359°22'00"	A LTS 10364	-0°00'40"	8.46 C		
PEG SO 46552	UNMK 3 DP 548734	ob3	37°39'40"	A DPS 77489	0°00'00"	99.95 C		
UNMK 3 DP 548734	UNMK 4 DP 548734	ob6	37°39'40"	A DPS 77489	0°00'00"	11.07 C		Class A
UNMK 4 DP 548734	UNMK SO 38408	ob8	37°39'40"	A DPS 77489	0°00'00"	40.66 C		
PEG (1) LTS 10364	UNMK 54 DP 548734	ob1	44°37'00"	A LTS 10364	-0°00'40"	5.16 C		
UNMK 54 DP 548734	UNMK 55 DP 548734	ob25	44°37'00"	A LTS 10364	-0°00'40"	5.16 C		Class A
UNMK 55 DP 548734	UNMK (51) LTS 10364	ob27	44°37'00"	A LTS 10364	-0°00'40"	11.81 C		
PEG SO 38408	UNMK 60 DP 548734	ob24	217°39'40"	A DPS 39684	0°00'00"	33.60 C		
UNMK 60 DP 548734	UNMK 4 DP 548734	ob37	190°49'00"	C		6.75 C		Class A
UNMK 60 DP 548734	UNMK 61 DP 548734	ob38	217°39'40"	A DPS 39684	0°00'00"	11.07 C		Class A
UNMK 61 DP 548734	UNMK 3 DP 548734	ob39	190°49'00"	C		6.75 C		Class A
UNMK 4 DP 548734	UNMK 8 DP 548734	ob9	190°49'00"	C		24.59 C		Class A
UNMK 8 DP 548734	UNMK 7 DP 548734	ob10	192°34'30"	C		21.51 C		Class A
UNMK 7 DP 548734	UNMK 1 DP 548734	ob11	154°08'00"	C		35.60 C		Class A
UNMK 1 DP 548734	UNMK 12 DP 548734	ob12	153°19'30"	C		46.42 C		Class A
UNMK 12 DP 548734	UNMK 5 DP 548734	ob13	153°09'00"	C		38.01 C		Class A
UNMK 5 DP 548734	UNMK 2 DP 548734	ob14	171°56'30"	C		12.28 C		Class A
UNMK 2 DP 548734	UNMK 6 DP 548734	ob15	189°49'00"	C		7.69 C		Class A

# Mark and Vector

Survey Number DP 548734

Meridional Circuit Bay of Plenty 1949

From	To	Code	Bearing	Adpt Surv	Bearing Correction	Distance	Adpt Surv	Class
UNMK 6 DP 548734	UNMK 57 DP 548734	ob16	175°37'30"	C		45.22 C		Class A
UNMK 3 DP 548734	UNMK 27 DP 548734	ob7	190°49'00"	C		14.64 C		Class A
UNMK 27 DP 548734	UNMK 26 DP 548734	ob17	192°34'30"	C		23.17 C		Class A
UNMK 26 DP 548734	UNMK 25 DP 548734	ob18	154°08'00"	C		37.38 C		Class A
UNMK 25 DP 548734	UNMK 22 DP 548734	ob19	153°19'30"	C		46.46 C		Class A
UNMK 22 DP 548734	UNMK 15 DP 548734	ob20	153°09'00"	C		37.19 C		Class A
UNMK 15 DP 548734	UNMK 24 DP 548734	ob21	171°56'30"	C		10.67 C		Class A
UNMK 24 DP 548734	UNMK 23 DP 548734	ob22	189°49'00"	C		7.53 C		Class A
UNMK 23 DP 548734	UNMK 56 DP 548734	ob23	175°37'30"	C		40.31 C		Class A
UNMK 57 DP 548734	UNMK 17 DP 548734	ob32	175°38'00"	C		8.63 C		Class A
UNMK 17 DP 548734	UNMK 59 DP 548734	ob41	153°09'00"	C		0.84 C		Class A
UNMK 56 DP 548734	UNMK 18 DP 548734	ob30	175°37'30"	C		15.15 C		Class A
UNMK 18 DP 548734	UNMK 16 DP 548734	ob42	153°18'00"	C		3.75 C		Class A
UNMK 16 DP 548734	UNMK 19 DP 548734	ob43	145°19'00"	C		5.28 C		Class A
UNMK 19 DP 548734	UNMK 58 DP 548734	ob44	135°25'00"	C		0.99 C		Class A
UNMK 59 DP 548734	UNMK 20 DP 548734	ob36	153°22'00"	C		1.58 C		Class A
UNMK 20 DP 548734	UNMK 21 DP 548734	ob45	145°19'00"	C		4.50 C		Class A
UNMK 21 DP 548734	UNMK 33 DP 548734	ob46	135°24'00"	C		4.59 C		Class A
UNMK 33 DP 548734	UNMK 28 DP 548734	ob47	126°02'00"	C		4.01 C		Class A
UNMK 28 DP 548734	UNMK 55 DP 548734	ob48	120°11'00"	C		14.03 C		Class A
UNMK 58 DP 548734	UNMK 29 DP 548734	ob34	135°24'00"	C		4.44 C		Class A
UNMK 29 DP 548734	UNMK 32 DP 548734	ob49	126°02'00"	C		4.68 C		Class A
UNMK 32 DP 548734	UNMK 54 DP 548734	ob50	120°11'00"	C		13.00 C		Class A
UNMK 55 DP 548734	UNMK 49 DP 548734	ob28	120°11'00"	C		8.99 C		Class A

# Mark and Vector

Survey Number DP 548734

Meridional Circuit Bay of Plenty 1949

From	To	Code	Bearing	Adpt Surv	Bearing Correction	Distance	Adpt Surv	Class
UNMK 49 DP 548734	UNMK 50 DP 548734	ob51	113°11'00"	C		7.98 C		Class A
UNMK 50 DP 548734	UNMK 31 DP 548734	ob52	116°37'30"	C		13.06 C		Class A
UNMK 31 DP 548734	UNMK 30 DP 548734	ob53	120°44'00"	C		6.99 C		Class A
UNMK 30 DP 548734	UNMK 35 DP 548734	ob54	147°14'30"	C		18.74 C		Class A
UNMK 35 DP 548734	UNMK 36 DP 548734	ob55	150°38'00"	C		33.71 C		Class A
UNMK 36 DP 548734	UNMK 37 DP 548734	ob56	154°19'00"	C		59.80 C		Class A
UNMK 37 DP 548734	UNMK 40 DP 548734	ob57	132°26'20"	C		54.10 C		Class A
UNMK 40 DP 548734	UNMK 34 DP 548734	ob58	135°04'30"	C		13.21 C		Class A
UNMK 34 DP 548734	UNMK 38 DP 548734	ob59	142°47'00"	C		5.49 C		Class A
UNMK 38 DP 548734	UNMK 39 DP 548734	ob60	148°40'00"	C		7.25 C		Class A
UNMK 39 DP 548734	UNMK 11 DP 548734	ob61	152°26'00"	C		3.10 C		Class A
UNMK 11 DP 548734	UNMK 44 DP 548734	ob62	162°02'00"	C		3.64 C		Class A
UNMK 44 DP 548734	UNMK (50) LTS 10364	ob63	159°51'00"	C		2.74 C		Class AD
UNMK 54 DP 548734	UNMK 45 DP 548734	ob26	120°11'00"	C		10.58 C		Class A
UNMK 45 DP 548734	UNMK 10 DP 548734	ob64	113°11'00"	C		8.14 C		Class A
UNMK 10 DP 548734	UNMK 13 DP 548734	ob65	116°37'30"	C		12.73 C		Class A
UNMK 13 DP 548734	UNMK 14 DP 548734	ob66	120°44'00"	C		5.63 C		Class A
UNMK 14 DP 548734	UNMK 9 DP 548734	ob67	147°14'30"	C		17.42 C		Class A
UNMK 9 DP 548734	UNMK 46 DP 548734	ob68	150°38'00"	C		33.40 C		Class A
UNMK 46 DP 548734	UNMK 52 DP 548734	ob69	154°19'00"	C		60.60 C		Class A
UNMK 52 DP 548734	UNMK 51 DP 548734	ob70	132°26'20"	C		54.95 C		Class A
UNMK 51 DP 548734	UNMK 48 DP 548734	ob71	135°04'30"	C		12.76 C		Class A
UNMK 48 DP 548734	UNMK 47 DP 548734	ob72	142°47'00"	C		4.89 C		Class A
UNMK 47 DP 548734	UNMK 41 DP 548734	ob73	148°40'00"	C		6.83 C		Class A

# Mark and Vector

Survey Number DP 548734

Meridional Circuit Bay of Plenty 1949

From	To	Code	Bearing	Adpt Surv	Bearing Correction	Distance	Adpt Surv	Class
UNMK 41 DP 548734	UNMK 42 DP 548734	ob74	152°26'00"	C		2.52 C		Class A
UNMK 42 DP 548734	UNMK 43 DP 548734	ob75	162°02'00"	C		3.31 C		Class A
UNMK 43 DP 548734	UNMK AB DP 548734	ob76	159°51'30"	C		12.31 C		Class AD
UNMK AB DP 548734	UNMK (50) LTS 10364	ob77	7°42'00"	C		10.70 C		
UNMK 61 DP 548734	PEG (1) DPS 23825	ob40	217°39'40"	A	DPS 39684	0°00'00"	72.20 C	

\*\*\* End of Report \*\*\*

# Schedule / Memorandum

Land Registration District

**South Auckland**

Survey Number

**LT 548734**

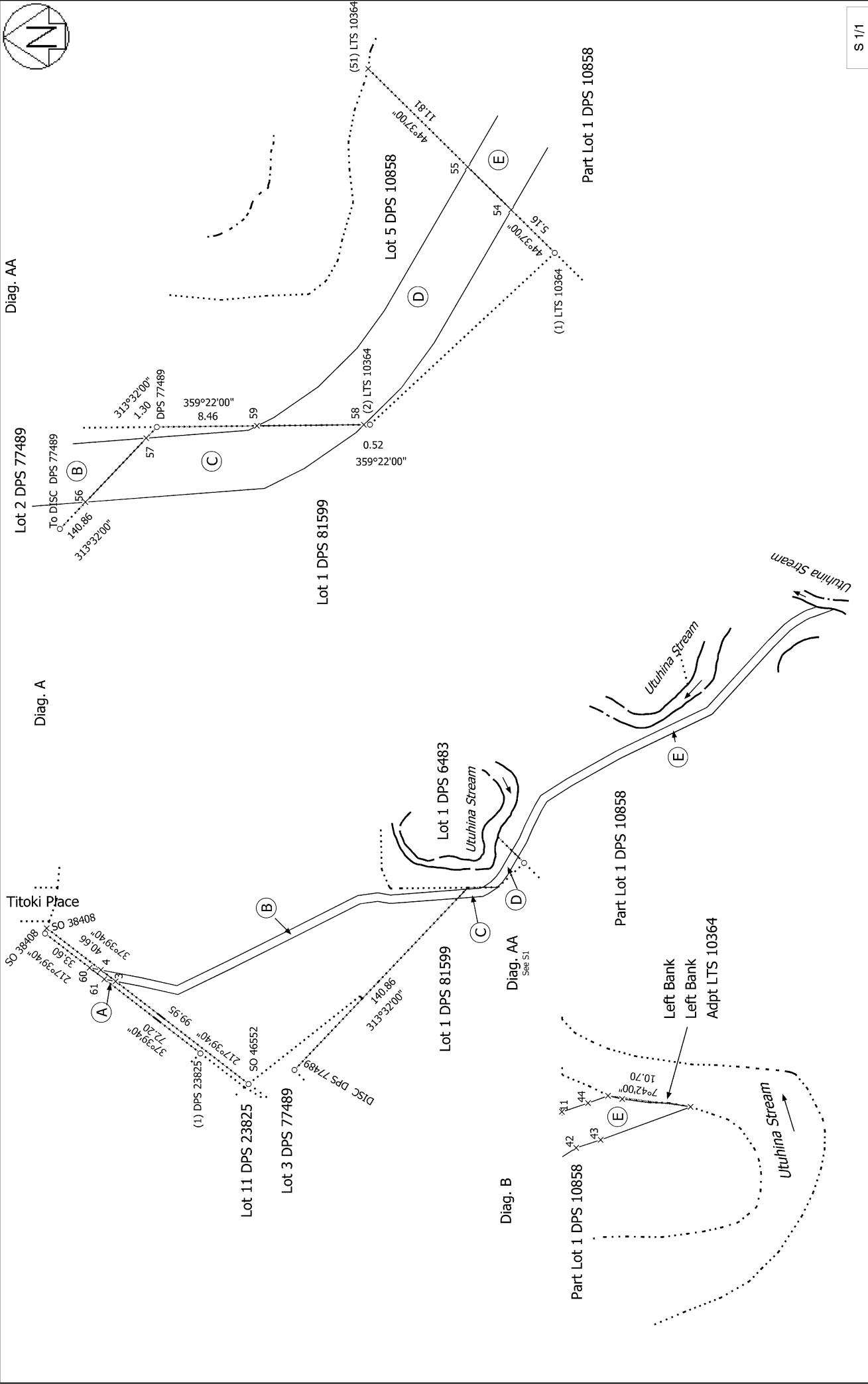
Territorial Authority (the Council)

**Rotorua District**

## Schedule of Easements in Gross

Last Edited: 09 Feb 2023 12:14:46

<u>Purpose</u>	<u>Shown</u>	<u>Burdened Land</u> <u>(Servient Tenement)</u>	<u>Grantee</u>
Right to convey electricity and right to convey telecommunications	A	Lot 1 DPS 85149	Unison Networks Limited
	B	Lot 2 DPS 77489	Unison Networks Limited
	C	Lot 1 DPS 85149	Unison Networks Limited
	D	Lot 5 DPS 10858	Unison Networks Limited
	E	Lot 1 Deposited Plan South Auckland 10858	Unison Networks Limited

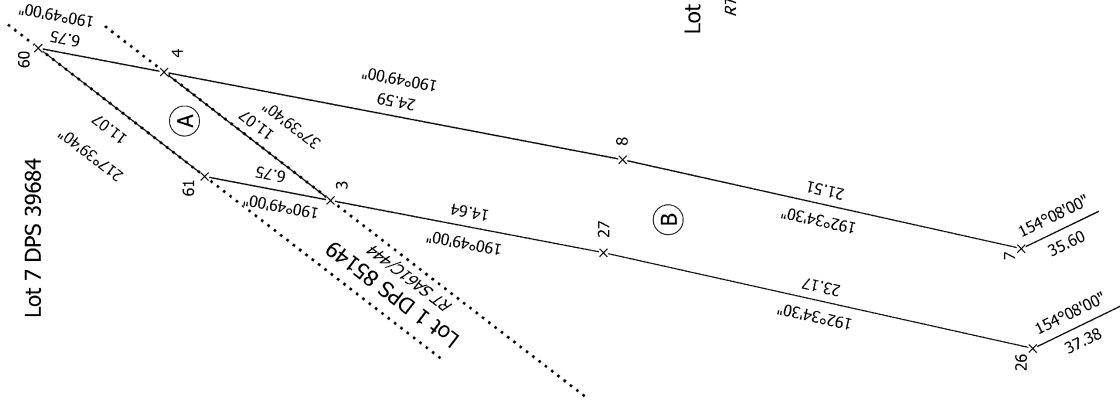
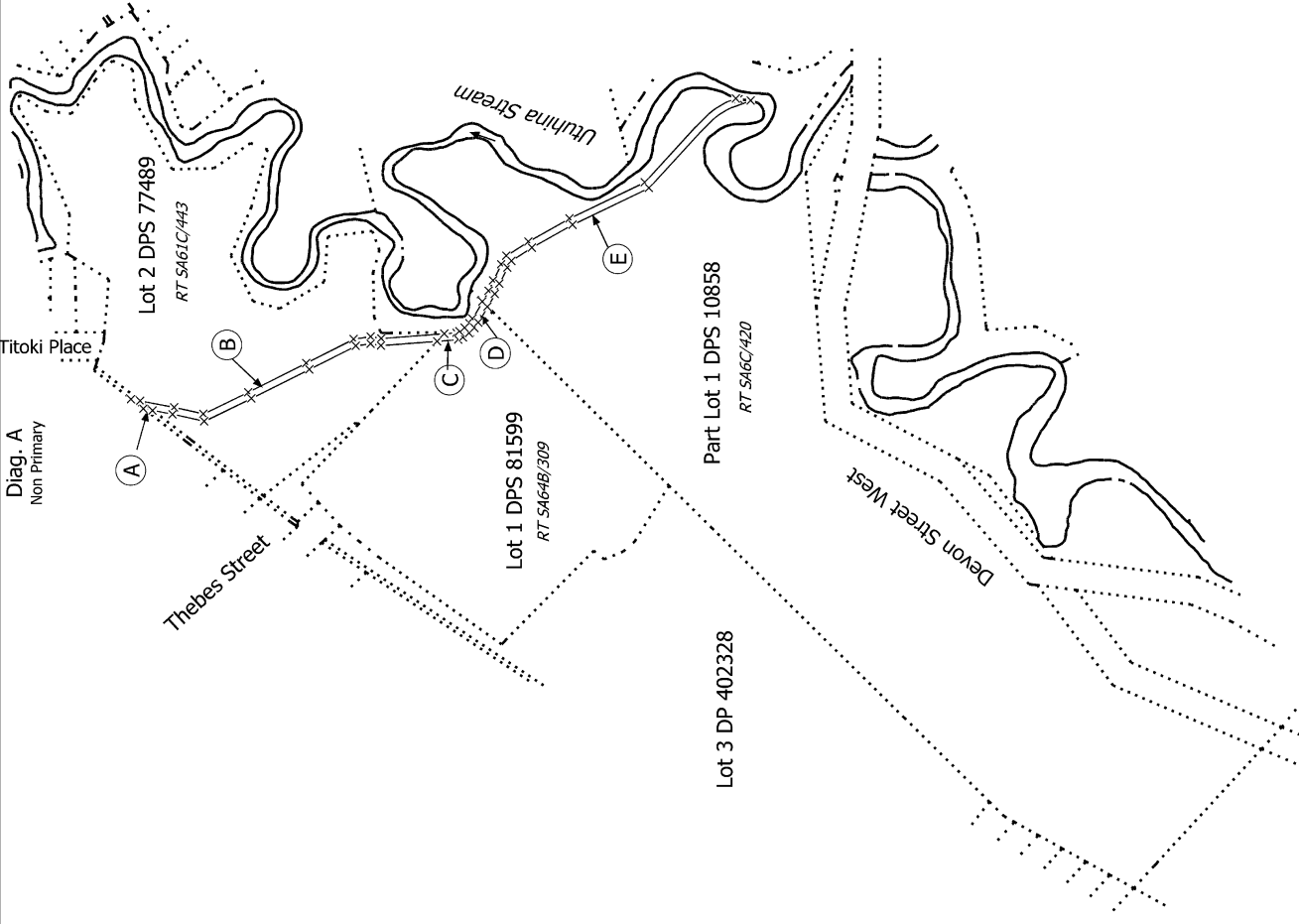


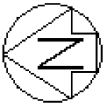
<p>Land District: South Auckland          Dataset Type: Parcels without Survey Information  <b>Digitally Generated Plan</b>          Generated on: 12/04/2023 2:36pm Page 8 of 11</p>	<p><b>Easements over Lot 1 DPS 85149, Lot 2 DPS 77489, Lot 1 DPS 81599, Lot 5 DPS 10858 and Lot 1 DPS 10858</b></p>	<p>Surveyor: Nicholas Gordon Davies          Firm: Cheal Consultants Limited          Date of Survey: 21/04/2020</p>	<p>Record of Survey          LT 548734          Approved on: 12/04/2023</p>
---	---	--	---



Diag. A  
Non Primary

Diag. AA  
Non Primary





Diag. AC  
Non Primary

Lot 2 DPS 77489

Diag. AB  
Non Primary

154°08'00"  
35.60  
154°08'00"  
37.38

153°19'30" 46.42  
153°19'30" 46.46

Lot 5 DPS 10858  
Esplanade Reserve  
RT 437822

175°37'30" 45.22  
175°37'30" 40.31  
313°32'00" 7.46  
175°38'00" 8.63  
153°09'00" 0.84  
153°18'00" 3.75  
145°19'00" 5.28  
135°25'00" 0.99  
359°22'00" 9.02  
153°22'00" 1.58  
145°19'00" 4.50  
135°24'00" 4.59  
126°02'00" 4.01  
135°24'00" 4.44  
126°02'00" 4.68  
135°25'00" 4.44

Utuhina Stream

Lot 2 DPS 77489  
RT S461C/443

153°09'00" 38.01  
153°09'00" 37.19

Lot 1 DPS 81599  
RT S464B/309

44°37'00" 5.16  
120°11'00" 14.03  
120°11'00" 13.00  
120°11'00" 10.58

Part Lot 1 DPS 10858  
RT S46C/420

120°11'00" 8.99  
113°11'00" 7.98  
113°11'00" 8.14  
116°37'30" 13.06  
120°11'00" 12.73  
116°37'30" 17.42  
120°11'00" 5.63  
120°11'00" 6.99  
147°14'30" 18.74  
147°14'30" 17.42

Lot 5 DPS 10858

171°56'30" 12.28  
171°59'30" 10.67  
189°49'00" 7.53  
175°37'30" 45.22  
175°37'30" 40.31  
175°37'30" 10.67  
171°56'30" 12.28  
171°59'30" 10.67  
189°49'00" 7.53  
175°37'30" 45.22  
175°37'30" 40.31

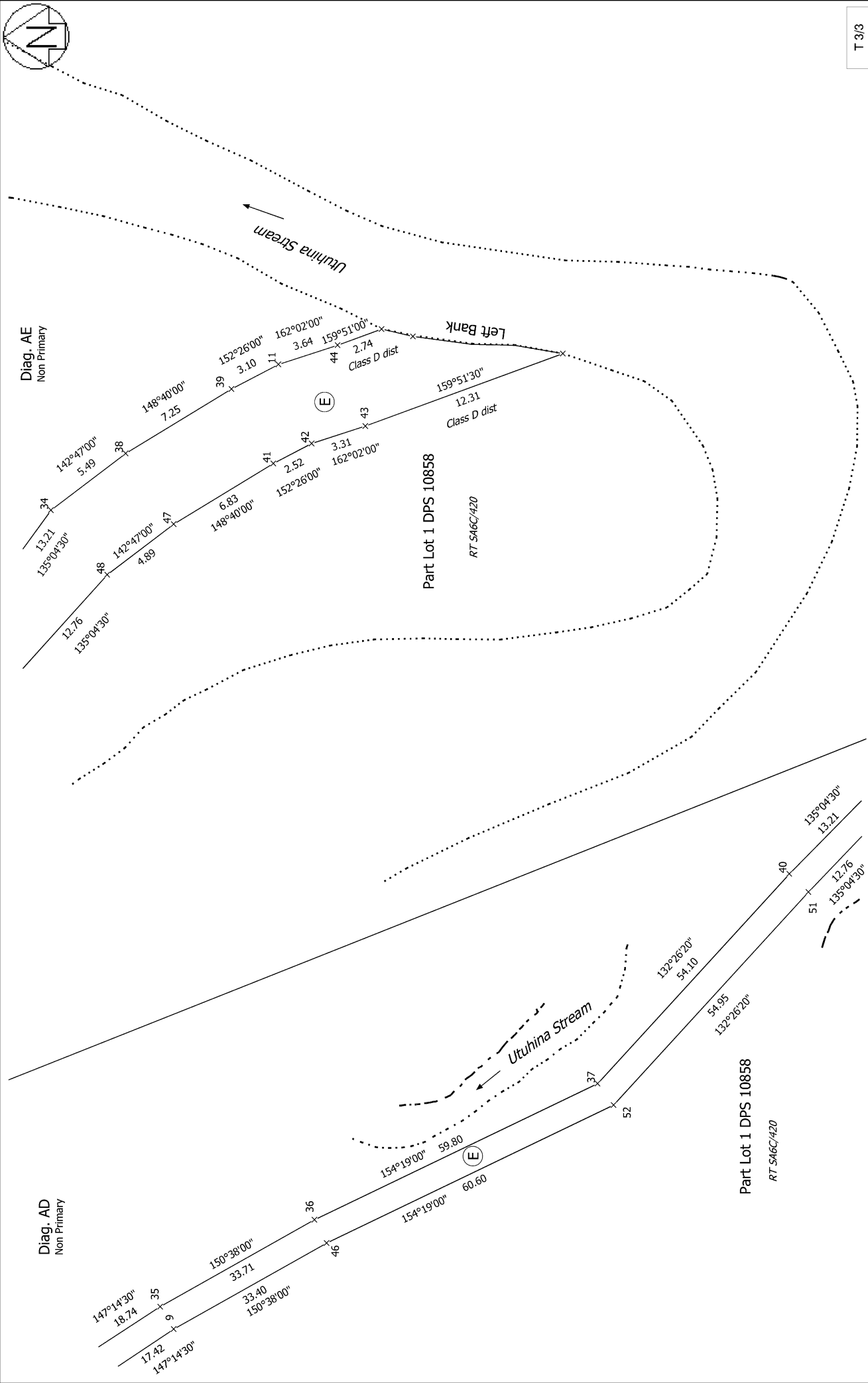
Land District: South Auckland  
Dataset Type: Parcels without Survey Information  
**Digitally Generated Plan**  
Generated on: 12/04/2023 2:36pm Page 10 of 11

Easements over Lot 1 DPS 85149, Lot 2 DPS 77489, Lot 1 DPS 81599, Lot 5  
DPS 10858 and Lot 1 DPS 10858

Surveyor: Nicholas Gordon Davies  
Firm: Cheal Consultants Limited  
Date of Survey: 21/04/2020

Record of Survey  
LT 548734  
Approved on: 12/04/2023

T 2/3



T 3/3

Record of Survey  
LT 548734  
Approved on: 12/04/2023

Surveyor: Nicholas Gordon Davies  
Firm: Cheal Consultants Limited  
Date of Survey: 21/04/2020

Easements over Lot 1 DPS 85149, Lot 2 DPS 77489, Lot 1 DPS 81599, Lot 5  
DPS 10858 and Lot 1 DPS 10858

Land District: South Auckland  
Dataset Type: Parcels without Survey Information  
**Digitally Generated Plan**  
Generated on: 12/04/2023 2:36pm Page 11 of 11