

Record of Survey - LT 571623

Survey Number LT 571623
Surveyor Reference JN 21/06 Quinlivan
Surveyor Kenneth Frank Thorn
Survey Firm Dagg & Thorn
Surveyor Declaration I Kenneth Frank Thorn, being a licensed cadastral surveyor, certify that--
 (a) this dataset provided by me and its related survey are accurate, correct and in accordance with the Cadastral Survey Act 2002 and Cadastral Survey Rules 2021; and
 (b) the survey was undertaken by me or under my personal direction.
 Declared on 13 Feb 2023 01:47 PM

Survey Details

Dataset Description Plan of Lots 1 - 6 & 10 Being A Subdivision of Pt Lot 1 DP 11277
Purpose LT Subdivision
Status Approved as to Survey **Type** Survey
Land District Hawkes Bay **Survey Class** Class B
Meridional Circuit Hawkes Bay 2000 **Vertical Datum** None

Survey Dates

Surveyed Date 14/12/2021 **Certified Date** 13/02/2023
Submitted Date 13/02/2023 13:47:31 **Survey Approval Date** 13/02/2023
Deposit Date

Referenced Surveys

Survey Number	Land District	Bearing Correction
DP 20809	Hawkes Bay	0°00'00"
DP 11277	Hawkes Bay	0°00'00"

Territorial Authorities

Central Hawke's Bay District

Comprised In

RT HBM1/1284

Created Parcels

Parcels	Parcel Intent	Area	RT Reference
Lot 1 Deposited Plan 571623	Fee Simple Title	0.8900 Ha	1036389
Lot 2 Deposited Plan 571623	Fee Simple Title	0.4308 Ha	1036390
Lot 3 Deposited Plan 571623	Fee Simple Title	0.4320 Ha	1036391
Lot 4 Deposited Plan 571623	Fee Simple Title	0.4310 Ha	1036392
Lot 5 Deposited Plan 571623	Fee Simple Title	0.4311 Ha	1036393
Lot 6 Deposited Plan 571623	Fee Simple Title	13.0700 Ha	1036394
Lot 10 Deposited Plan 571623	Fee Simple Title	24.2070 Ha	1036395
Area A Deposited Plan 571623	Easement		
Area B Deposited Plan 571623	Easement		
Area C Deposited Plan 571623	Easement		



Record of Survey - LT 571623

Created Parcels

Parcels	Parcel Intent	Area	RT Reference
Area D Deposited Plan 571623	Easement		
Total Area		<hr/> 39.8919 Ha	

Mark and Vector

Survey Number DP 571623
Meridional Circuit Hawkes Bay 2000

From	To	Code	Bearing	Adpt Surv	Bearing Correction	Distance	Adpt Surv	Class
IT VII DP 11277	IS I DP 20809	ob2	207°57'30" M			236.05 M		
IT VII DP 11277	IS IA DP 309163	ob3	24°40'25" M			96.33 M		
IS IA DP 309163	IT I DP 309163	ob6	24°40'25" M			169.23 M		
IT VII DP 11277	IS I DP 571623	ob1	79°30'50" M			111.31 M		
IS I DP 571623	IT II DP 571623	ob7	207°27'00" M			175.73 M		
IT II DP 571623	IS IV DP 571623	ob11	226°31'20" M			132.12 M		
IS IV DP 571623	IS I DP 20809	ob17	292°43'55" M			46.88 M		
IS IV DP 571623	IT II DP 20809	ob18	123°31'15" M			112.02 M		
IS I DP 20809	IT II DP 20809	ob4	120°20'50" A	DP 20809	0°00'00"	158.30 A	DP 20809	
IT II DP 20809	IT XX DP 11277	ob22	120°46'10" A	DP 20809	0°00'00"	350.86 A	DP 20809	
IT II DP 571623	IS III DP 571623	ob12	1°03'00" M			82.38 M		
IS III DP 571623	IS I DP 571623	ob26	47°12'40" M			108.33 M		
IS I DP 20809	PEG (1) DP 20809	ob5	92°15'00" M			4.46 M		
IS IV DP 571623	PEG 1 DP 571623	ob19	302°52'00" M			42.82 M		
IS IV DP 571623	PEG 2 DP 571623	ob20	28°58'00" M			4.56 M		
IS IV DP 571623	ABM 3 DP 571623	ob21	110°42'00" M			43.17 M		
IT II DP 571623	PEG 4 DP 571623	ob13	284°14'00" M			87.20 M		
IT II DP 571623	PEG 5 DP 571623	ob14	272°51'00" M			46.43 M		
IT II DP 571623	PEG 6 DP 571623	ob15	206°03'00" M			18.91 M		
IS III DP 571623	PEG 7 DP 571623	ob27	303°19'00" M			47.65 M		
IS III DP 571623	PEG 8 DP 571623	ob28	309°13'00" M			48.37 M		
IS III DP 571623	PEG 9 DP 571623	ob29	338°04'00" M			8.25 M		
IS III DP 571623	PEG 10 DP 571623	ob30	318°50'00" M			5.17 M		
IS III DP 571623	PEG 11 DP 571623	ob31	4°34'00" M			2.10 M		
IS III DP 571623	PEG 12 DP 571623	ob32	21°55'00" M			7.97 M		
IS III DP 571623	PEG 13 DP 571623	ob33	105°00'00" M			38.99 M		
IS III DP 571623	PEG 14 DP 571623	ob34	356°30'00" M			12.09 M		
IS III DP 571623	PEG 15 DP 571623	ob35	8°41'00" M			14.67 M		
IS III DP 571623	PEG 16 DP 571623	ob36	24°30'00" M			13.95 M		

Mark and Vector

Survey Number DP 571623

Meridional Circuit Hawkes Bay 2000

From	To	Code	Bearing	Adpt Surv	Bearing Correction	Distance	Adpt Surv	Class
IS I DP 571623	POST 17 DP 571623	ob8	85°04'00"	M		2.42 M		
IT II DP 20809	PEG (2) DP 20809	ob23	37°03'00"	A DP 20809	0°00'00"	11.95 A	DP 20809	
IT XX DP 11277	PEG 19 DP 571623	ob25	63°27'00"	M		6.30 M		
PEG 19 DP 571623	PEG 20 DP 571623	ob64	120°31'30"	A DP 11277	0°00'00"	10.06 A	DP 11277	
PEG 19 DP 571623	PEG 22 DP 571623	ob65	32°00'50"	A DP 11277	0°00'00"	222.69 A	DP 11277	Class B
PEG 20 DP 571623	PEG 21 DP 571623	ob67	32°00'50"	A DP 11277	0°00'00"	223.30 A	DP 11277	Class BD
PEG (2) DP 20809	PEG 19 DP 571623	ob63	121°50'10"	A DP 20809	0°00'00"	353.02 A	DP 20809	Class B
PEG 22 DP 571623	POST (6) DP 11277	ob68	334°18'00"	A DP 11277	0°00'00"	0.50 A	DP 11277	Class B
POST (6) DP 11277	POST (7) DP 11277	ob69	334°18'00"	A DP 11277	0°00'00"	140.70 A	DP 11277	Class B
POST (7) DP 11277	POST (8) DP 11277	ob70	306°56'40"	A DP 11277	0°00'00"	303.20 A	DP 11277	Class B
POST (8) DP 11277	UNMK (9) DP 11277	ob71	24°07'00"	A DP 11277	0°00'00"	10.06 A	DP 11277	Class BD
POST 18 DP 571623	PEG (2) DP 20809	ob75	116°45'30"	A DP 20809	0°00'00"	70.38 C		Class B
PEG (1) DP 20809	PEG 1 DP 571623	ob37	27°57'30"	A DP 11277	0°00'00"	6.00 C		Class B
PEG 4 DP 571623	PEG 7 DP 571623	ob44	27°57'30"	A DP 11277	0°00'00"	98.60 C		Class B
PEG 7 DP 571623	UNMK a DP 571623	ob49	27°57'30"	A DP 11277	0°00'00"	2.50 C		Class B
UNMK a DP 571623	PEG 8 DP 571623	ob72	27°57'30"	A DP 11277	0°00'00"	2.50 C		Class B
PEG 1 DP 571623	PEG 2 DP 571623	ob40	116°45'30"	C		42.75 C		Class B
PEG 2 DP 571623	ABM 3 DP 571623	ob42	116°45'30"	C		42.75 C		Class B
ABM 3 DP 571623	PEG 6 DP 571623	ob43	27°53'00"	C		100.90 C		Class B
PEG 4 DP 571623	PEG 5 DP 571623	ob45	116°38'00"	C		42.68 C		Class B
PEG (1) DP 20809	POST 18 DP 571623	ob38	116°45'30"	A DP 20809	0°00'00"	85.69 C		Class B
POST 18 DP 571623	ABM 3 DP 571623	ob74	27°53'00"	C		6.00 C		Class B
PEG 13 DP 571623	POST 17 DP 571623	ob59	27°49'00"	C		94.84 C		Class B
POST 17 DP 571623	UNMK c DP 571623	ob62	27°49'00"	C		6.92 C		Class BD

Mark and Vector

Survey Number DP 571623

Meridional Circuit Hawkes Bay 2000

From	To	Code	Bearing	Adpt Surv	Bearing Correction	Distance	Adpt Surv	Class
IT VII DP 11277	IS VIII DP 11277	ob0	27°57'30"	A DP 11277	0°00'00"	76.28 A	DP 11277	
IS VIII DP 11277	PEG (10) DP 11277	ob76	110°27'00"	A DP 11277	0°00'00"	4.06 A	DP 11277	
PEG (10) DP 11277	IS IX DP 11277	ob77	110°27'00"	A DP 11277	0°00'00"	112.21 A	DP 11277	
IS IX DP 11277	POST (8) DP 11277	ob79	24°07'00"	A DP 11277	0°00'00"	7.04 A	DP 11277	
PEG (10) DP 11277	UNMK (11) DP 11277	ob78	27°57'30"	A DP 11277	0°00'00"	10.06 A	DP 11277	Class BD
PEG 8 DP 571623	PEG (10) DP 11277	ob51	27°57'30"	A DP 11277	0°00'00"	100.43 C		Class B
PEG 7 DP 571623	PEG 9 DP 571623	ob50	116°45'00"	C		41.14 C		Class B
PEG 8 DP 571623	PEG 14 DP 571623	ob52	116°45'00"	C		41.14 C		Class B
PEG 14 DP 571623	PEG 15 DP 571623	ob60	50°30'00"	C		3.83 C		Class B
PEG 15 DP 571623	PEG 16 DP 571623	ob61	116°51'00"	C		4.00 C		Class B
PEG 5 DP 571623	PEG 10 DP 571623	ob47	27°55'00"	C		95.00 C		Class B
PEG 10 DP 571623	UNMK b DP 571623	ob53	27°55'00"	C		6.00 C		Class B
UNMK a DP 571623	UNMK b DP 571623	ob73	116°45'00"	C		42.61 C		Class B
UNMK b DP 571623	PEG 12 DP 571623	ob81	116°45'00"	C		4.00 C		Class B
PEG 12 DP 571623	PEG 13 DP 571623	ob57	116°45'00"	C		38.84 C		Class B
PEG 10 DP 571623	PEG 9 DP 571623	ob54	4°53'00"	C		3.77 C		Class B
PEG 10 DP 571623	PEG 11 DP 571623	ob55	116°45'00"	C		4.00 C		Class B
PEG 11 DP 571623	PEG 12 DP 571623	ob56	27°55'00"	C		6.00 C		Class B
PEG 12 DP 571623	PEG 16 DP 571623	ob58	27°55'00"	C		6.00 C		Class B
IS IX DP 11277	IT X DP 11277	ob80	126°38'00"	A DP 11277	0°00'00"	301.37 A	DP 11277	
IT X DP 11277	IS XI DP 11277	ob83	154°15'00"	A DP 11277	0°00'00"	136.63 A	DP 11277	
IS XI DP 11277	POST (6) DP 11277	ob84	86°51'00"	A DP 11277	0°00'00"	4.97 A	DP 11277	
IS XI DP 11277	IS XII DP 11277	ob85	108°37'20"	A DP 11277	0°00'00"	216.52 A	DP 11277	
IS XII DP 11277	IS XIII DP 11277	ob87	132°01'20"	A DP 11277	0°00'00"	242.63 A	DP 11277	
IS XIII DP 11277	IS XIV DP 11277	ob90	55°19'00"	A DP 11277	0°00'00"	97.63 A	DP 11277	
IS XIV DP 11277	IT XV DP 11277	ob91	111°07'00"	A DP 11277	0°00'00"	100.56 A	DP 11277	

Mark and Vector

Survey Number DP 571623

Meridional Circuit Hawkes Bay 2000

From	To	Code	Bearing	Adpt Surv	Bearing Correction	Distance	Adpt Surv	Class
IT XV DP 11277	POST (11) DP 11277	ob92	6°36'00"	A DP 11277	0°00'00"	10.66 A	DP 11277	
PEG 20 DP 571623	POST (12) DP 11277	ob66	120°31'30"	A DP 11277	0°00'00"	224.10 A	DP 11277	Class B
POST (12) DP 11277	POST (13) DP 11277	ob94	120°01'20"	C		258.34 C		Class B
POST (13) DP 11277	PEG (14) DP 11277	ob95	129°36'00"	C		112.68 C		Class B
PEG (14) DP 11277	POST (15) DP 11277	ob96	252°44'00"	A DP 11277	0°00'00"	133.68 A	DP 11277	Class B
POST (15) DP 11277	PEG (16) DP 11277	ob97	155°35'40"	A DP 11277	0°00'00"	226.25 A	DP 11277	Class B
PEG (16) DP 11277	PEG (17) DP 11277	ob98	65°31'20"	A DP 11277	0°00'00"	108.49 A	DP 11277	Class B
PEG (17) DP 11277	POST (18) DP 11277	ob99	63°43'20"	A DP 11277	0°00'00"	148.28 A	DP 11277	Class B
POST (18) DP 11277	POST (19) DP 11277	ob100	8°41'30"	A DP 11277	0°00'00"	207.83 A	DP 11277	Class B
POST (19) DP 11277	POST (11) DP 11277	ob101	344°06'20"	A DP 11277	0°00'00"	246.51 A	DP 11277	Class B
POST (11) DP 11277	UNMK (20) DP 11277	ob93	344°06'20"	A DP 11277	0°00'00"	6.64 A	DP 11277	Class BD
IS XI DP 11277	UNMK d DP 571623	ob86	98°17'00"	C		61.35 C		
IS XII DP 11277	UNMK e DP 571623	ob88	273°32'00"	C		105.60 C		
IS XII DP 11277	UNMK f DP 571623	ob89	187°00'00"	C		46.00 C		
PEG 1 DP 571623	PEG 4 DP 571623	ob39	27°57'30"	A DP 11277	0°00'00"	100.90 C		Class B
PEG 2 DP 571623	PEG 5 DP 571623	ob41	27°55'00"	C		100.99 C		Class B
PEG 5 DP 571623	PEG 6 DP 571623	ob46	116°53'00"	C		42.68 C		Class B
PEG 6 DP 571623	PEG 13 DP 571623	ob48	28°00'00"	C		101.10 C		Class B
IT X DP 11277	POST (7) DP 11277	ob82	40°00'00"	A DP 11277	0°00'00"	5.19 A	DP 11277	
IS IV DP 571623	POST 18 DP 571623	ob16	118°41'00"	M		43.01 M		
IT II DP 571623	IT XX DP 11277	ob9	138°01'25"	M		446.99 M		
IT II DP 571623	IS V DP 571623	ob10	110°39'05"	M		453.24 M		
IS V DP 571623	IT XX DP 11277	ob102	215°58'05"	M		213.06 M		
IT XX DP 11277	PEG 20 DP 571623	ob24	99°07'00"	M		14.48 M		
IS V DP 571623	PEG 21 DP 571623	ob103	27°15'00"	M		16.49 M		

Mark and Vector

Survey Number DP 571623

Meridional Circuit Hawkes Bay 2000

From	To	Code	Bearing	Adpt Surv	Bearing Correction	Distance	Adpt Surv	Class
IS V DP 571623	PEG 22 DP 571623	ob104	355°43'00" M			19.30 M		

Mark Name	Mark Condition	Description
ABM 3 DP 571623		ABM on fence stay
IS I DP 571623		Down 0.3
IS IA DP 309163		Flush in seal
IS III DP 571623		Down 0.3
IS IV DP 571623		Down 0.3
IT I DP 309163		Down 0.3 in berm
IT II DP 571623		Down 0.3
IT VII DP 11277		Down 0.3

*** End of Report ***

MEMORANDUM OF EASEMENTS			
PURPOSE	SERVIENT TEN (Burdened land)	SHOWN	DOMINANT TEN (Benefitted land)
Right of Way	Lot 1	A	Lots 2 & 3
	Lot 2	B	Lots 1 & 3
	Lot 3	C	Lots 1 & 2
	Lot 6	D	Lots 4 & 5



Diag. B

See Sheet 2

White Road

Lot 2 DP 304469

Right Bank
Former water boundary
not coincident with water's edge
Adopt DP 11277

Right Bank
Former water boundary
not coincident with water's edge
Adopt DP 11277

Right Bank
Former water boundary
not coincident with water's edge
Adopt DP 11277

Right Bank
Former water boundary
not coincident with water's edge
Adopt DP 11277

Right Bank
Former water boundary
not coincident with water's edge
Adopt DP 11277

Right Bank
Former water boundary
not coincident with water's edge
Adopt DP 11277

Right Bank
Former water boundary
not coincident with water's edge
Adopt DP 11277

Right Bank
Former water boundary
not coincident with water's edge
Adopt DP 11277

Right Bank
Former water boundary
not coincident with water's edge
Adopt DP 11277

Right Bank
Former water boundary
not coincident with water's edge
Adopt DP 11277

Right Bank
Former water boundary
not coincident with water's edge
Adopt DP 11277

Right Bank
Former water boundary
not coincident with water's edge
Adopt DP 11277

Diag. BB

Diag. BB

Diag. BB

Diag. BB

Diag. BB

Diag. BB

Diag. BB

Diag. BB

Diag. BB

Diag. BB

Diag. BB

Diag. BB

Diag. BB

Diag. BB

Diag. BB

Diag. BB

Diag. BB

Diag. BB

Diag. BB

Diag. BB

Diag. BB

Diag. BB

Diag. BB

Diag. BB

Diag. BB

Diag. BB

Diag. BB

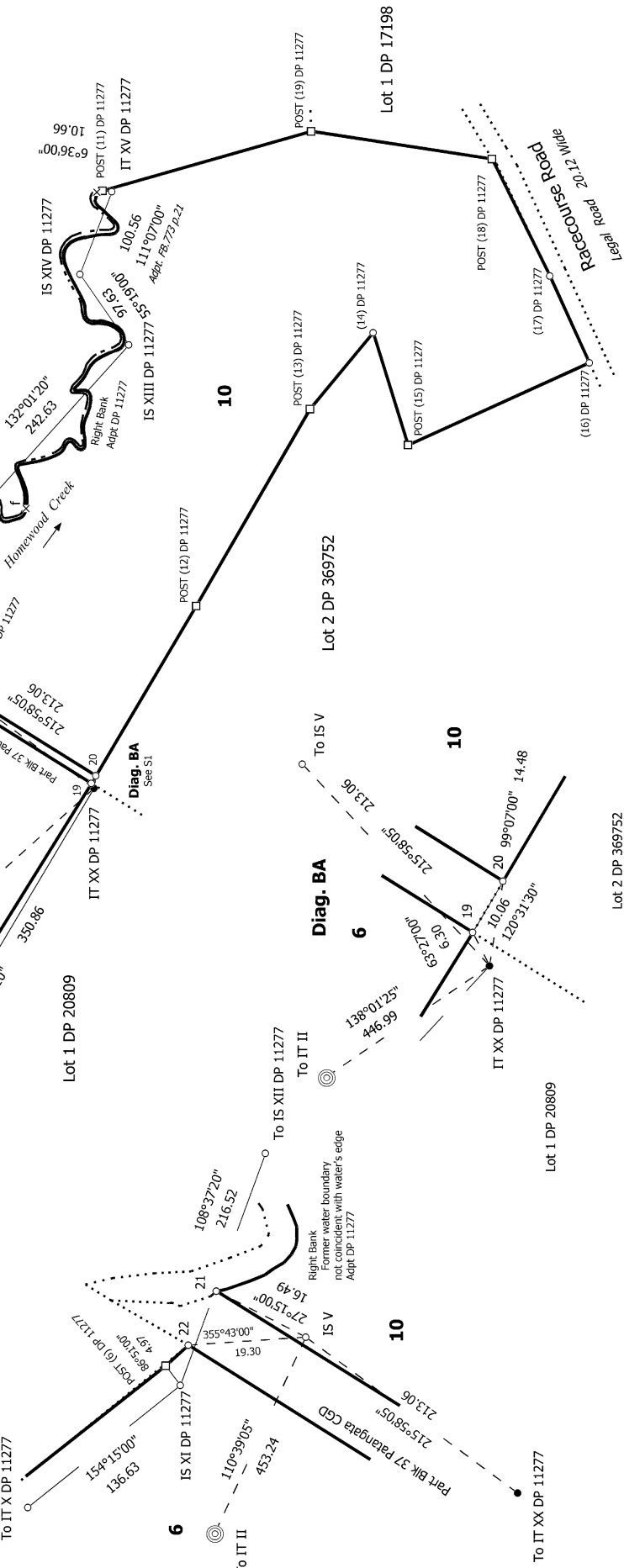
Diag. BB

Diag. BB

Diag. BB

Diag. BB

Diag. BB



Lot 2 DP 369752

Lot 1 DP 17198

Lot 1 DP 20809

Lot 1 DP 20809

Lot 1 DP 20809

Lot 1 DP 20809

Lot 1 DP 20809

Lot 1 DP 20809

Lot 1 DP 20809

Lot 1 DP 20809

Lot 1 DP 20809

Lot 1 DP 20809

Lot 1 DP 20809

Lot 1 DP 20809

Land District: Hawkes Bay

Plan of Lots 1 - 6 & 10 Being A Subdivision of Pt Lot 1 DP 11277

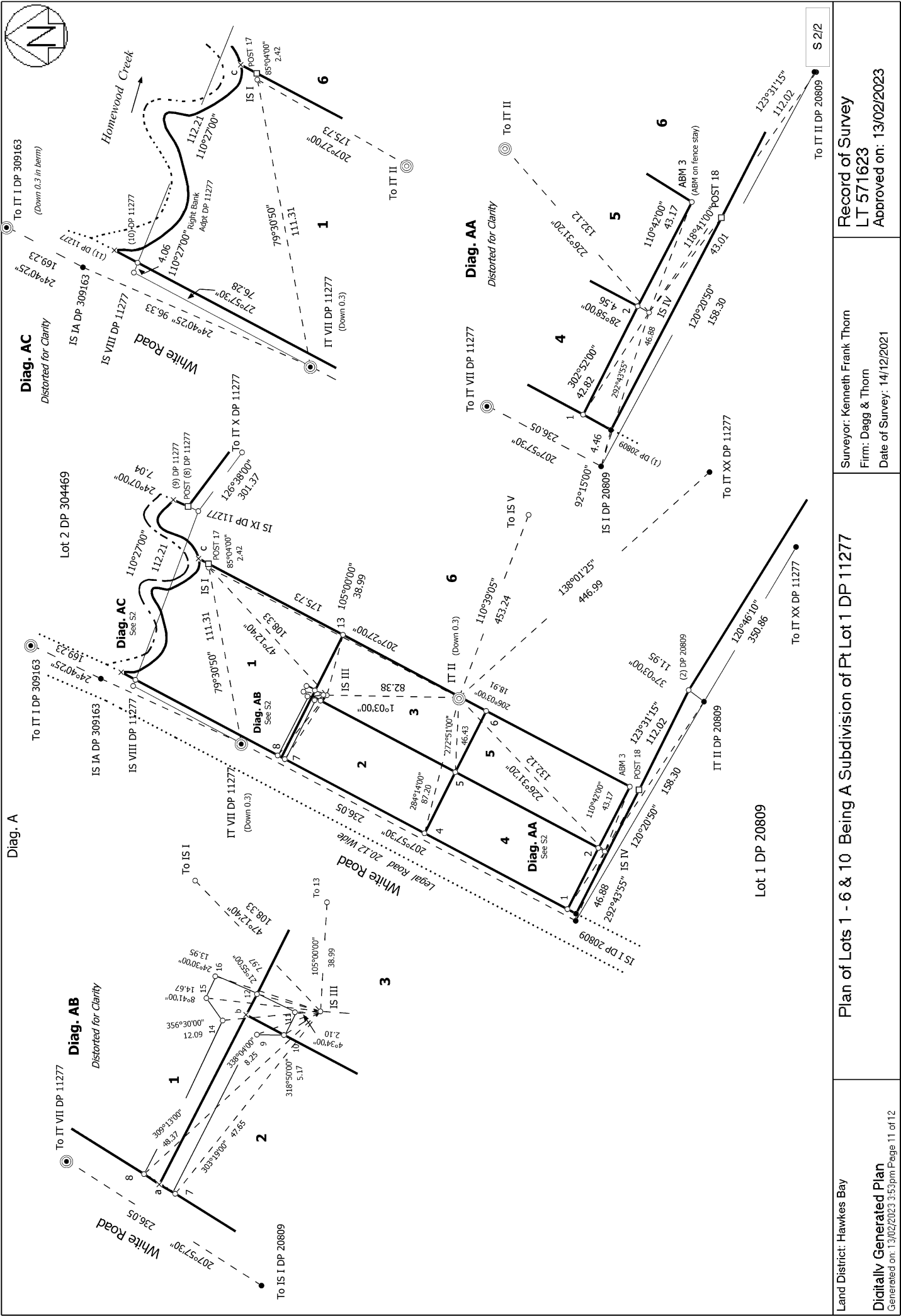
Surveyor: Kenneth Frank Thorn
Firm: Dagg & Thorn
Date of Survey: 14/12/2021

Record of Survey
LT 571623
Approved on: 13/02/2023

S 1/2

Digitally Generated Plan

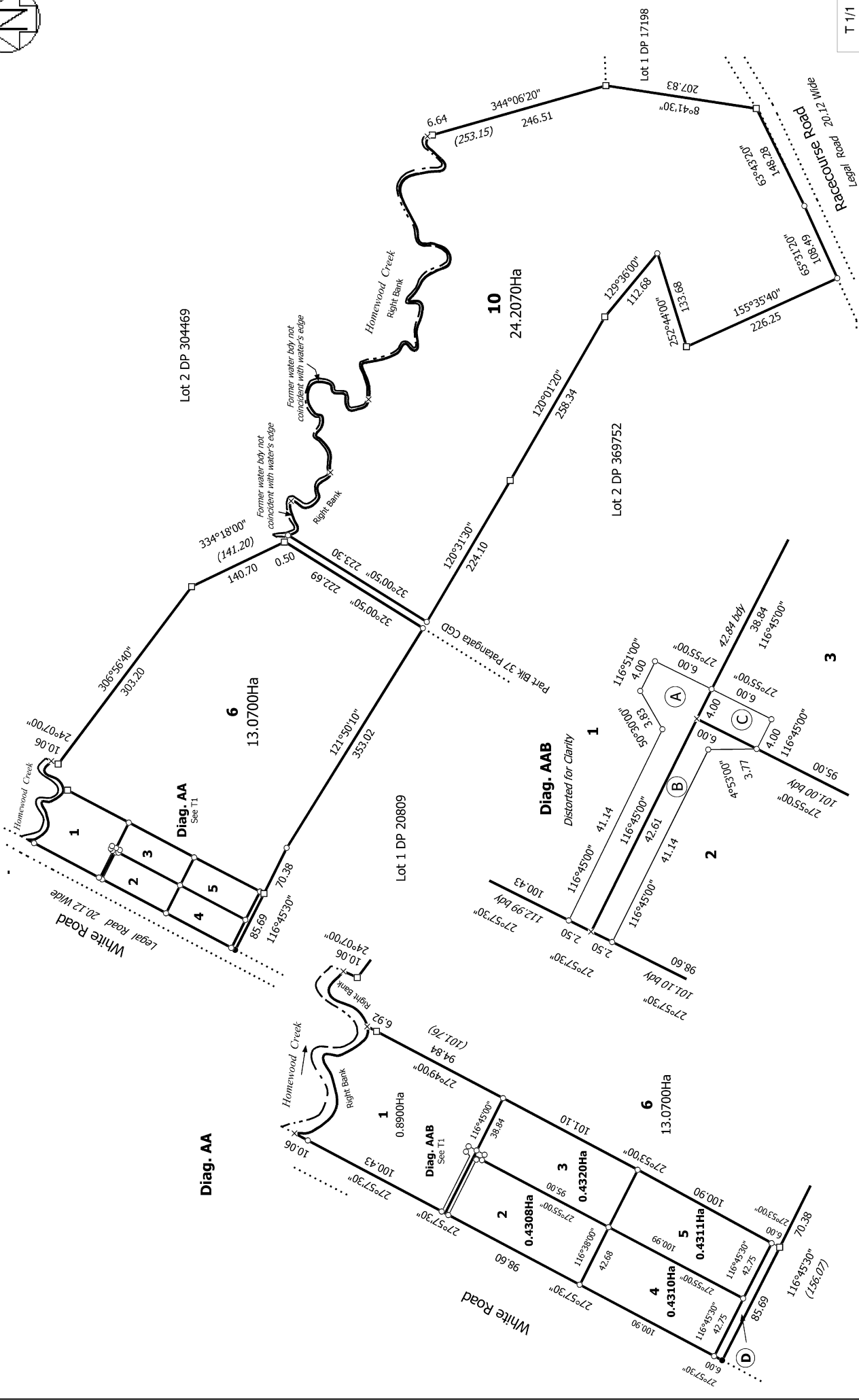
Generated on: 13/02/2023 3:53pm Page 10 of 12



<p>Land District: Hawkes Bay</p>	<p>Surveyor: Kenneth Frank Thorn Firm: Dagg & Thorn Date of Survey: 14/12/2021</p>	<p>Plan of Lots 1 - 6 & 10 Being A Subdivision of Pt Lot 1 DP 11277</p>
<p>Record of Survey LT 571623 Approved on: 13/02/2023</p>		<p>Digitally Generated Plan Generated on: 13/02/2023 3:53pm Page 11 of 12</p>



Diag. A



T 1/1

Land District: Hawkes Bay

Digitally Generated Plan

Generated on: 13/02/2023 3:53pm Page 12 of 12

Plan of Lots 1 - 6 & 10 Being A Subdivision of Pt Lot 1 DP 11277

Surveyor: Kenneth Frank Thorn
Firm: Dagg & Thorn
Date of Survey: 14/12/2021

Record of Survey
LT 571623
Approved on: 13/02/2023