



Record of Survey - LT 580632

Survey Number LT 580632
Surveyor Reference P18911 Waiau
Surveyor Christopher David Hawes
Survey Firm Davie Lovell-Smith Ltd
Surveyor Declaration I Christopher David Hawes, being a licensed cadastral surveyor, certify that--
(a) this dataset provided by me and its related survey are accurate, correct and in accordance with the Cadastral Survey Act 2002 and Cadastral Survey Rules 2021; and
(b) the survey was undertaken by me or under my personal direction.
Declared on 14 Feb 2023 09:43 AM

Survey Details

Dataset Description Lots 1 and 2 being Subdivision of Lot 2 DP 361709
Purpose LT Subdivision
Status Approved as to Survey **Type** Survey
Land District Canterbury **Survey Class** Class C
Meridional Circuit Amuri 2000 **Vertical Datum** None

Survey Dates

Surveyed Date 26/04/2022 **Certified Date** 14/02/2023
Submitted Date 14/02/2023 09:43:45 **Survey Approval Date** 14/02/2023
Deposit Date

Referenced Surveys

Survey Number	Land District	Bearing Correction
SO 10666	Canterbury	0°00'10"
SO 11261	Canterbury	0°00'40"
SO 1515	Canterbury	0°00'10"
SO 17997	Canterbury	
SO 1516	Canterbury	0°00'10"
DP 302102	Canterbury	0°00'40"
DP 361709	Canterbury	0°00'40"
DP 398040	Canterbury	0°00'40"

Territorial Authorities

Hurunui District

Comprised In

RT 251023
RT CB10K/1329

Created Parcels

Parcels	Parcel Intent	Area	RT Reference
Lot 1 Deposited Plan 580632	Fee Simple Title	2.9743 Ha	1081836
Lot 2 Deposited Plan 580632	Fee Simple Title	236.7352 Ha	1081837



Record of Survey - LT 580632

Created Parcels

Parcels	Parcel Intent	Area	RT Reference
Area A Deposited Plan 580632	Easement		
Total Area		<hr/> 239.7095 Ha	

Mark and Vector

Survey Number DP 580632

Meridional Circuit Amuri 2000

From	To	Code	Bearing	Adpt Surv	Bearing Correction	Distance	Adpt Surv	Class
IR 3 DP 580632	IT 13 SO 1516	ob0	22°47'20" M			340.07 M		
IR 3 DP 580632	XII (Waiiau SD)	ob1	151°12'30" M			199.04 M		
IR 3 DP 580632	IR III SO 17997	ob2	136°45'36" M			502.49 M		
IR 3 DP 580632	IR V DP 361709	ob3	182°31'46" M			1,070.42 M		
IR 3 DP 580632	IT LOTTERY RIVER	ob4	187°37'44" M			4,352.86 M		
IR 3 DP 580632	IT 4 DP 580632	ob5	247°44'20" M			159.96 M		
IR 3 DP 580632	IT 5 DP 580632	ob6	199°07'20" M			220.34 M		
XII (Waiiau SD)	IT 13 SO 1516	ob7	4°12'10" M			489.27 M		
XII (Waiiau SD)	IR III SO 17997	ob8	127°39'00" M			313.70 M		
XII (Waiiau SD)	PEG 56 DP 580632	ob9	324°56'10" M			15.45 M		
IT 4 DP 580632	PEG 55 DP 580632	ob15	296°04'00" M			64.54 M		
PEG 55 DP 580632	PEG 90 DP 580632	ob26	113°51'10" C			59.00 C		Class C
PEG 90 DP 580632	PEG 56 DP 580632	ob28	113°51'10" C			261.36 C		Class C
PEG 90 DP 580632	PEG 91 DP 580632	ob29	208°44'00" C			4.15 C		Class C
PEG 91 DP 580632	POST 92 DP 580632	ob30	187°22'40" C			46.15 C		Class C
POST 92 DP 580632	POST 93 DP 580632	ob31	150°07'40" C			80.97 C		Class C
POST 93 DP 580632	PEG 94 DP 580632	ob32	132°04'00" C			52.29 C		Class C
PEG 94 DP 580632	PEG 95 DP 580632	ob34	135°29'40" C			98.19 C		Class C
PEG 95 DP 580632	PEG 96 DP 580632	ob33	90°52'40" C			62.30 C		Class C
PEG 96 DP 580632	PEG 97 DP 580632	ob35	26°15'00" C			64.17 C		Class C
PEG 97 DP 580632	PEG 56 DP 580632	ob36	7°35'00" C			62.94 C		Class C
IT 4 DP 580632	XII (Waiiau SD)	ob16	115°01'10" M			269.16 M		
IT 4 DP 580632	IT 5 DP 580632	ob17	152°47'50" C			165.94 C		
IT 5 DP 580632	XII (Waiiau SD)	ob21	78°38'40" M			171.40 M		
XII (Waiiau SD)	5541	ob10	193°14'10" M			1,338.99 A	SO 17997	
XII (Waiiau SD)	H MOUNT HIGHFIELD	ob11	184°07'20" M			6,129.77 A	SO 17997	
XII (Waiiau SD)	IR IV SO 17997	ob12	166°17'15" M			254.32 M		
XII (Waiiau SD)	PEG 97 DP 580632	ob13	199°03'00" M			52.63 M		
XII (Waiiau SD)	PEG 96 DP 580632	ob14	203°00'30" M			116.57 M		

Mark and Vector

Survey Number DP 580632

Meridional Circuit Amuri 2000

From	To	Code	Bearing	Adpt Surv	Bearing Correction	Distance	Adpt Surv	Class
IT 4 DP 580632	PEG 90 DP 580632	ob18	318°16'00"	M		6.03 M		
IT 4 DP 580632	PEG 91 DP 580632	ob19	278°10'00"	M		6.07 M		
IT 4 DP 580632	POST 92 DP 580632	ob20	194°53'00"	M		46.47 M		
IT 5 DP 580632	POST 93 DP 580632	ob22	304°22'30"	M		57.51 M		
IT 5 DP 580632	PEG 94 DP 580632	ob23	253°26'00"	M		9.02 M		
IT 5 DP 580632	PEG 95 DP 580632	ob24	140°20'30"	M		94.30 M		
PEG 55 DP 580632	PEG 54 SO 1515	ob27	231°27'10"	A SO 1516	0°00'10"	41.26 A SO 1516		Class C
PEG 54 SO 1515	PEG 53 SO 1515	ob39	279°13'10"	A SO 1516	0°00'10"	101.35 A SO 1516		Class C
PEG 53 SO 1515	PEG 52 SO 1515	ob40	254°10'10"	A SO 1516	0°00'10"	125.93 A SO 1516		Class C
PEG 52 SO 1515	PEG 51 SO 1515	ob41	261°44'10"	A SO 1516	0°00'10"	42.14 A SO 1516		Class C
PEG 51 SO 1515	PEG 50 SO 1515	ob42	317°55'10"	A SO 1516	0°00'10"	257.90 A SO 1516		Class C
PEG 50 SO 1515	PEG 49 SO 1515	ob43	273°18'10"	A SO 1516	0°00'10"	228.35 A SO 1516		Class C
PEG 49 SO 1515	PEG 48 SO 1515	ob44	248°06'10"	A SO 1516	0°00'10"	18.43 A SO 1516		Class C
PEG 48 SO 1515	PEG 47 SO 1515	ob45	248°26'10"	A SO 1516	0°00'10"	107.87 A SO 1516		Class C
PEG 47 SO 1515	PEG 46 SO 1515	ob46	347°46'10"	A SO 1516	0°00'10"	241.88 A SO 1516		Class C
PEG 46 SO 1515	PEG 45 SO 1515	ob47	347°47'10"	A SO 1516	0°00'10"	131.97 A SO 1516		Class C
PEG 45 SO 1515	PEG 44 SO 1515	ob48	304°02'10"	A SO 1516	0°00'10"	124.22 A SO 1516		Class C
PEG 44 SO 1515	PEG 43 SO 1515	ob49	304°16'10"	A SO 1516	0°00'10"	227.21 A SO 1516		Class CD
PEG 56 DP 580632	PEG (2) SO 1515	ob25	136°41'10"	A SO 1515	0°00'10"	157.78 A SO 1515		Class C
PEG (2) SO 1515	PEG (3) SO 1515	ob50	177°38'10"	A SO 1515	0°00'10"	118.39 A SO 1515		Class C
PEG (3) SO 1515	PEG (4) SO 1515	ob51	208°32'10"	A SO 1515	0°00'10"	135.39 A SO 1515		Class C
PEG (4) SO 1515	PEG (1) SO 1515	ob52	195°50'10"	A SO 1515	0°00'10"	57.21 A SO 1515		Class C
UNMK SO 10666	PEG SO 10666	ob53	135°03'10"	A SO 10666	0°00'10"	117.04 A SO 10666		Class CD
PEG SO 10666	PEG (5) SO 1515	ob54	195°50'10"	A SO 10666	0°00'10"	76.44 A SO 10666		Class C
PEG (5) SO 1515	PEG (6) SO 1515	ob55	195°50'10"	A SO 11261	0°00'40"	29.75 A SO 11261		Class C
PEG (6) SO 1515	PEG XXIX SO 11621	ob56	195°50'10"	A SO 11261	0°00'40"	60.04 A SO 11261		Class C
PEG XXIX SO 11621	PEG XXX SO 11621	ob57	206°00'10"	A SO 11261	0°00'40"	62.36 A SO 11261		Class C
PEG XXX SO 11621	PEG XXXI SO 11621	ob58	224°00'10"	A SO 11261	0°00'40"	82.12 A SO 11261		Class C
PEG XXXI SO 11621	POST 6 DP 361709	ob59	328°46'40"	A DP 361709	0°00'40"	96.28 A DP 361709		Class C
POST 6 DP 361709	POST 5 DP 361709	ob60	306°54'40"	A DP 361709	0°00'40"	3.99 A DP 361709		Class C
POST 5 DP 361709	UNMK 4 DP 398040	ob84	273°12'20"	A DP 398040	0°00'40"	111.52 A DP 398040		Class C

Mark and Vector

Survey Number DP 580632

Meridional Circuit Amuri 2000

From	To	Code	Bearing	Adpt Surv	Bearing Correction	Distance	Adpt Surv	Class
UNMK 4 DP 398040	UNMK 2 DP 398040	ob61	273°12'20"	A DP 398040	0°00'40"	4.01 A	DP 398040	Class C
UNMK 2 DP 398040	UNMK 1 DP 361709	ob62	273°12'20"	A DP 398040	0°00'40"	23.61 A	DP 398040	Class C
UNMK 1 DP 361709	UNMK 3 DP 361709	ob64	273°12'20"	A DP 361709	0°00'40"	3.27 A	DP 361709	Class C
UNMK 3 DP 361709	PEG 4 DP 361709	ob65	273°12'20"	A DP 361709	0°00'40"	16.49 A	DP 361709	Class C
PEG 4 DP 361709	PEG 3 DP 361709	ob66	234°28'40"	A DP 361709	0°00'40"	92.41 A	DP 361709	Class C
PEG 3 DP 361709	PEG 2 DP 361709	ob67	192°52'40"	A DP 361709	0°00'40"	25.87 A	DP 361709	Class C
PEG 2 DP 361709	PEG 1 DP 361709	ob68	208°27'40"	A DP 361709	0°00'40"	40.93 A	DP 361709	Class C
PEG 1 DP 361709	PEG XIV SO 11261	ob69	265°35'10"	A SO 11261	0°00'40"	21.57 A	SO 11261	Class C
PEG XIV SO 11261	PEG SO 1515	ob70	196°44'10"	A DP 361709	0°00'40"	74.87 A	DP 361709	Class C
PEG SO 1515	PEG 89 SO 1515	ob71	293°57'10"	A DP 361709	0°00'40"	525.91 A	DP 361709	Class C
PEG 89 SO 1515	PEG 88 SO 1515	ob72	200°57'10"	A SO 1515	0°00'10"	124.44 A	SO 1515	Class C
PEG 88 SO 1515	PEG 87 SO 1515	ob73	164°44'10"	A SO 1515	0°00'10"	86.50 A	SO 1515	Class C
PEG 87 SO 1515	PEG 86 SO 1515	ob74	187°19'10"	A SO 1515	0°00'10"	99.34 A	SO 1515	Class C
PEG 86 SO 1515	PEG 85 SO 1515	ob75	204°55'10"	A SO 1515	0°00'10"	214.93 A	SO 1515	Class C
PEG 85 SO 1515	PEG DP 302102	ob76	182°46'10"	A DP 302102	0°00'40"	193.67 A	DP 302102	Class C
PEG DP 302102	PEG 84 SO 1515	ob77	182°46'10"	A DP 302102	0°00'40"	41.41 A	DP 302102	Class C
PEG 84 SO 1515	PEG 83 SO 1515	ob78	261°26'10"	A SO 1515	0°00'10"	27.56 A	SO 1515	Class C
PEG 83 SO 1515	PEG 82 SO 1515	ob79	199°00'10"	A SO 1515	0°00'10"	104.51 A	SO 1515	Class C
PEG 82 SO 1515	PEG 81 SO 1515	ob80	215°00'10"	A SO 1515	0°00'10"	134.94 A	SO 1515	Class C
PEG 81 SO 1515	UNMK SO 1515	ob81	213°56'10"	A SO 1515	0°00'10"	241.40 A	SO 1515	Class CD
UNMK 2 DP 398040	UNMK 9 DP 398040	ob63	358°34'40"	A DP 398040	0°00'40"	269.80 A	DP 398040	Class C
UNMK 9 DP 398040	UNMK 10 DP 398040	ob82	88°34'40"	A DP 398040	0°00'40"	4.00 A	DP 398040	Class C
UNMK 10 DP 398040	UNMK 4 DP 398040	ob83	178°34'40"	A DP 398040	0°00'40"	270.13 A	DP 398040	Class C
5541	IR V DP 361709	ob37	21°48'45"	C		439.97 C		
H MOUNT HIGHFIELD	IT LOTTERY RIVER	ob38	353°15'56"	C		1,987.73 C		

Mark Name	Mark Condition	Description
5541		Concrete Pillar
IR 3 DP 580632		down 0.3m
IR III SO 17997		down 0.1m in berm
IR IV SO 17997		down 0.1m near edge of cliff
IR V DP 361709		down 0.2m in berm



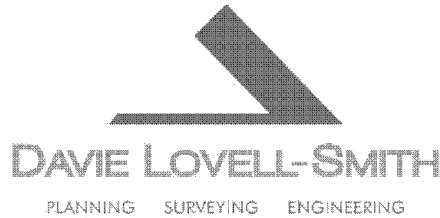
Mark and Vector

Survey Number DP 580632

Meridional Circuit Amuri 2000

Mark Name	Mark Condition	Description
IT 13 SO 1516		down 0.5m in berm
IT 4 DP 580632		down 0.3m
IT 5 DP 580632		down 0.3m
IT LOTTERY RIVER		down 0.3m in paddock
XII (Waiau SD)		up 0.05m in paddock

***** End of Report *****



Davie Lovell-Smith Ltd
116 Wrights Road, Addington
PO Box 679, Christchurch 8140
New Zealand
Telephone (03) 379 0793
E-mail: office@dls.co.nz

Surveyor Reference: P18911

DP 580632

SCHEDULE OF EXISTING EASEMENTS

Purpose	Servient Tenement (Burdened Land)	Shown	Document
Right to convey water .	Lot 2	A	EI 7648074.3

PART IVA CONSERVATION ACT 1987

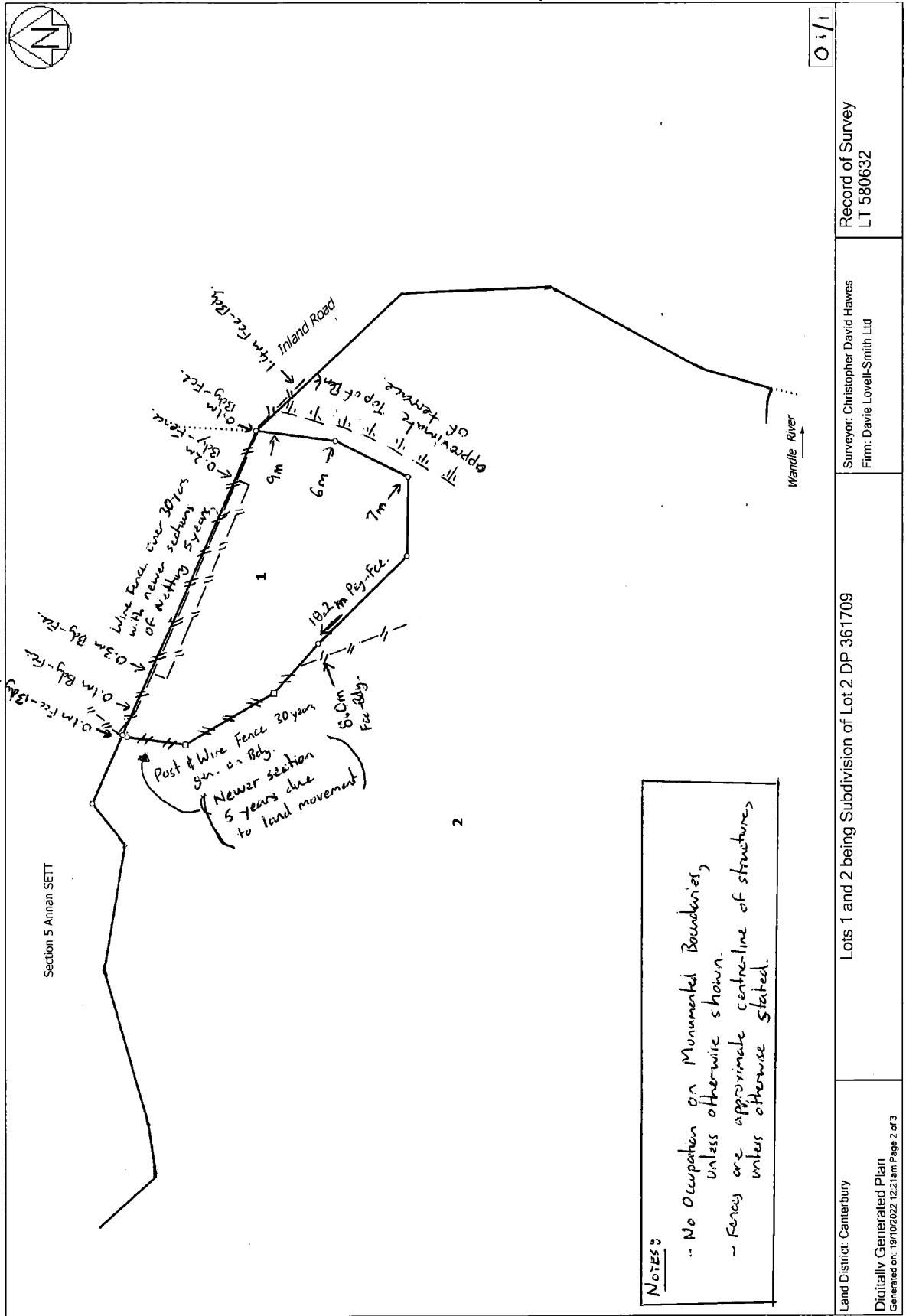
Lots 1 and 2 hereon are subject to Part IVA Conservation Act 1987.

AMALGAMATION CONDITIONS

That Lot 1 hereon be transferred to the owners of Section 5 Annan Settlement (RT: CB10K/1329) and one record of title issued to include both parcels.
(LINZ ref: 1780627).

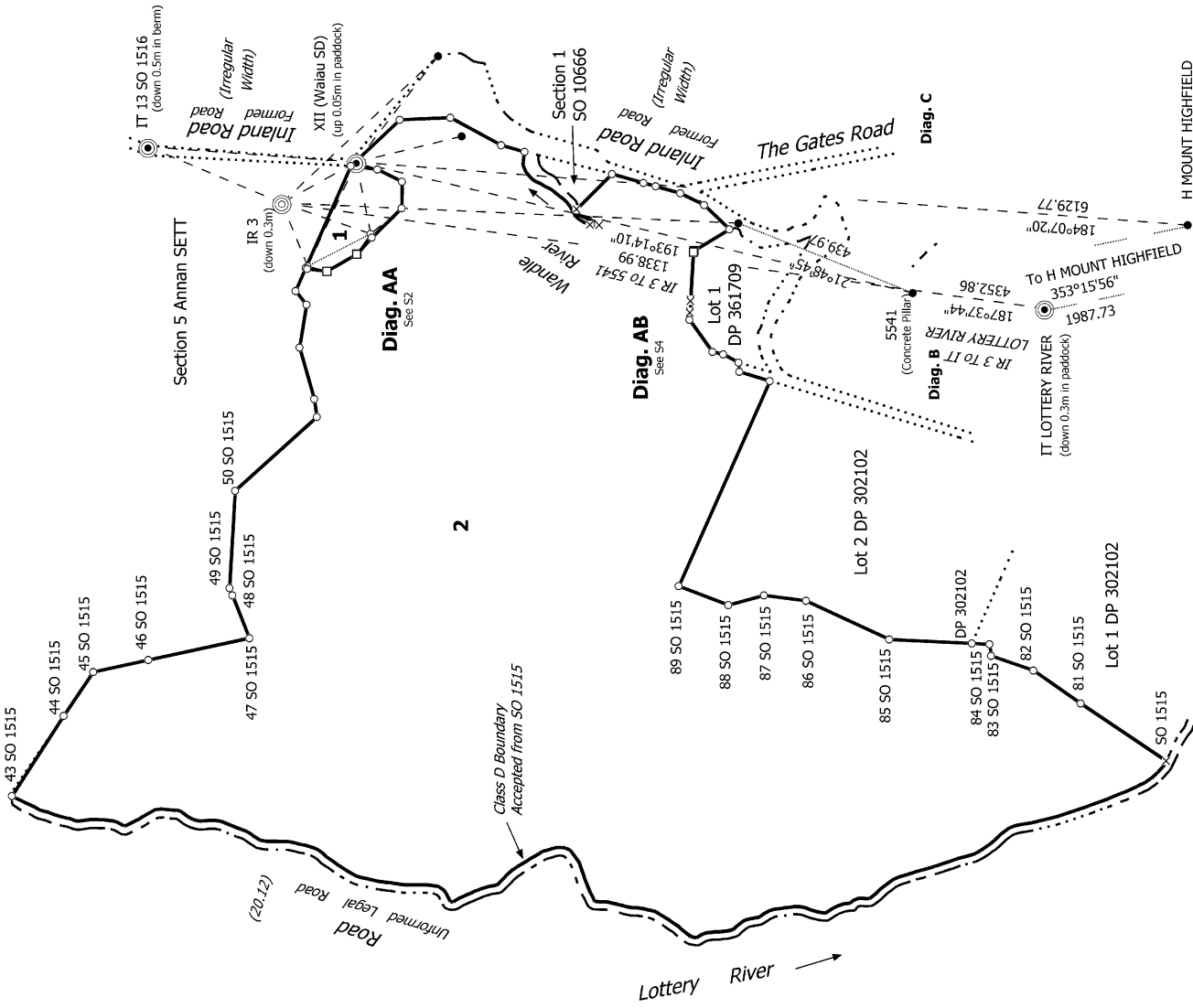
That Lot 2 hereon, Lot 3 DP 361709 and Lot 2 DP 302102 (residue RT 251023) be held in the same record of title
(CSN Request 1783093)

OCCUPATION DIAGRAM



01/1	Record of Survey LT 580632	Surveyor: Christopher David Hawes Firm: Davis Lovell-Smith Ltd	Lots 1 and 2 being Subdivision of Lot 2 DP 361709
Land District: Canterbury		Digitally Generated Plan Generated on: 19/10/2022 12:21am Page 2 of 3	

Diag. A



S 1/4

Land District: Canterbury

Digitally Generated Plan

Generated on: 14/02/2023 11:42am | Page 9 of 15

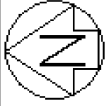
Lots 1 and 2 being Subdivision of Lot 2 DP 361709

Surveyor: Christopher David Hawes
Firm: Davie Lovell-Smith Ltd

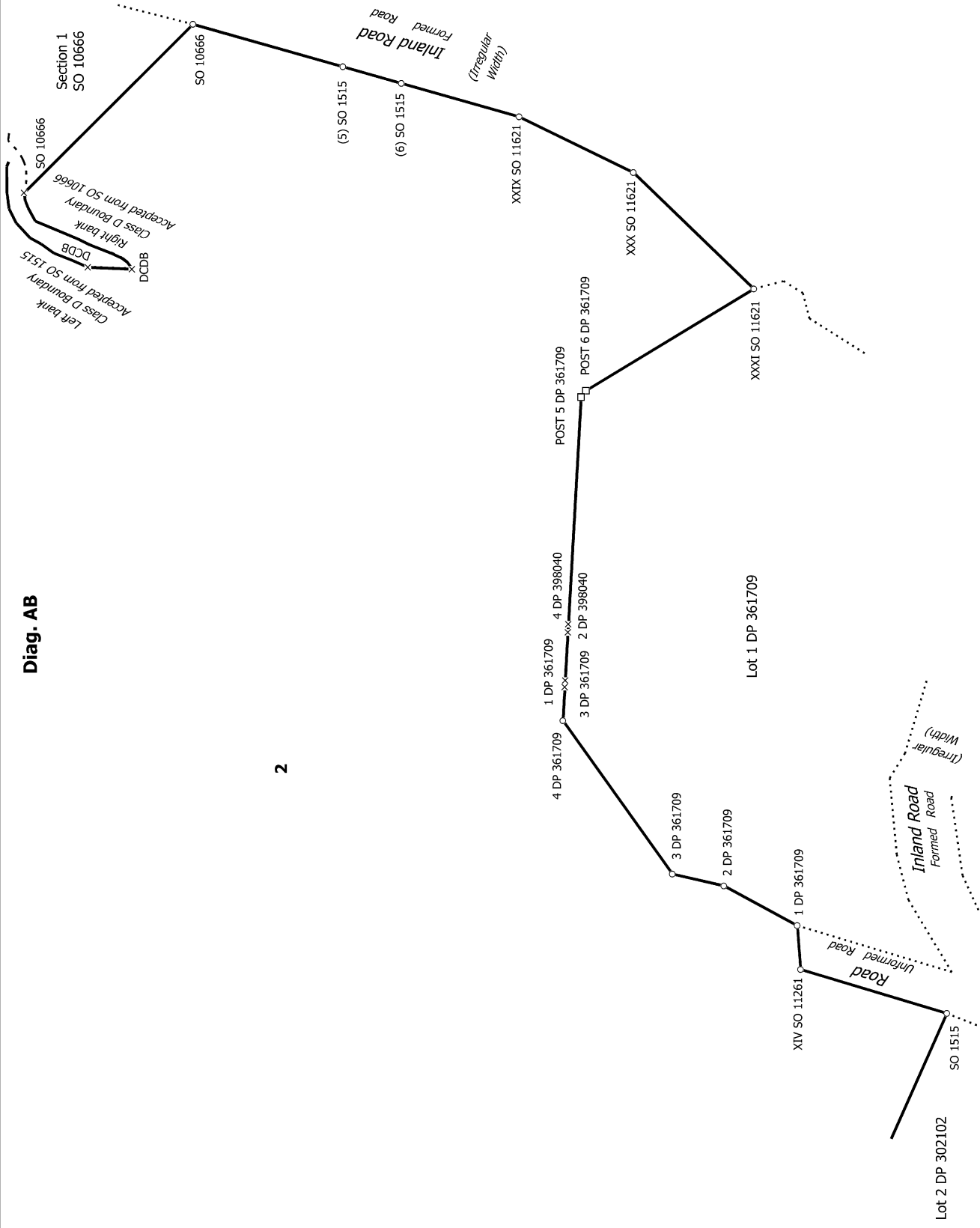
Date of Survey: 26/04/2022

Record of Survey
LT 580632

Approved on: 14/02/2023



Diag. AB



2

S 4/4

Land District: Canterbury

Digitally Generated Plan
Generated on: 14/02/2023 11:42am Page 12 of 15

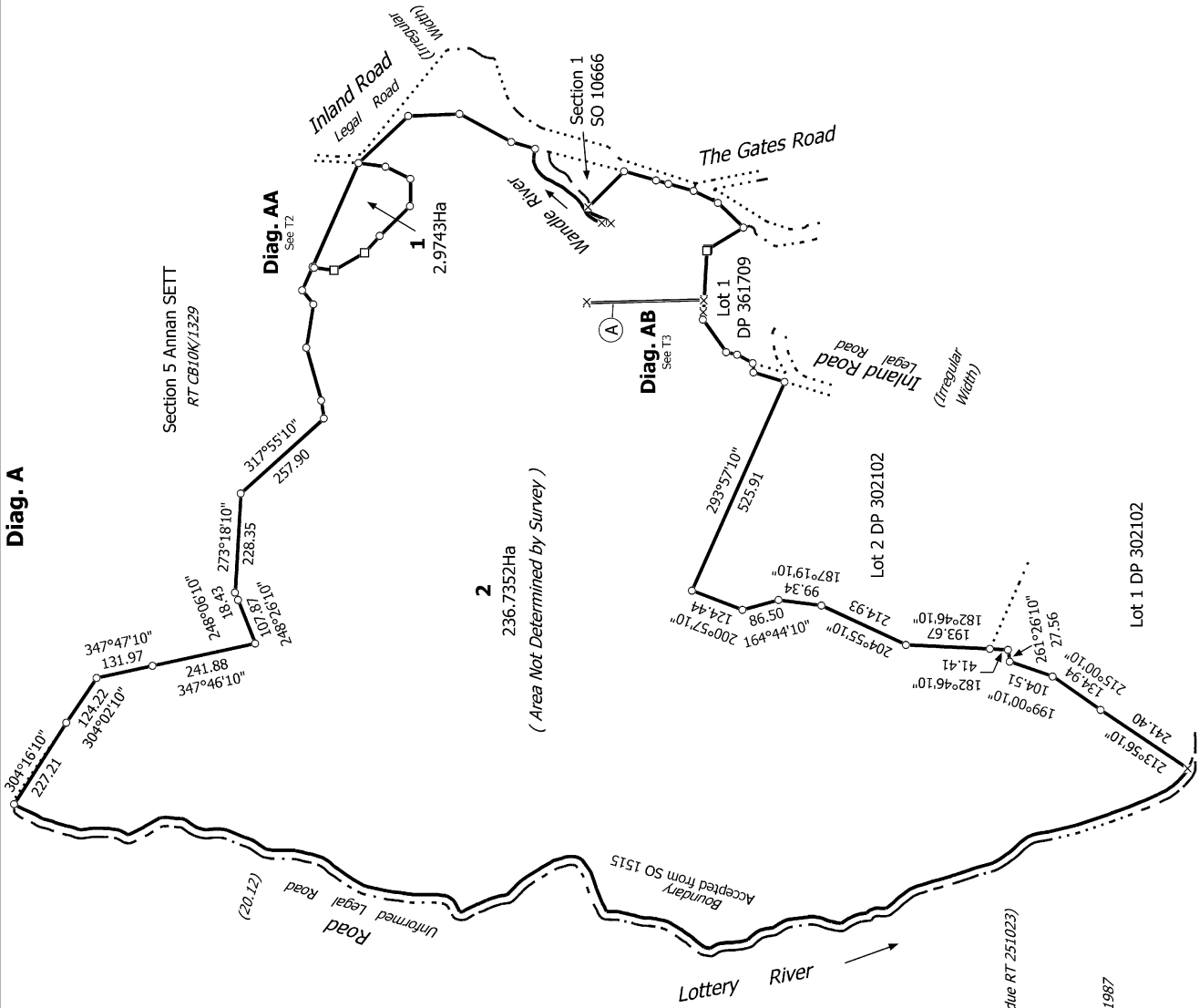
Lots 1 and 2 being Subdivision of Lot 2 DP 361709

Surveyor: Christopher David Hawes
Firm: Davie Lovell-Smith Ltd
Date of Survey: 26/04/2022

Record of Survey
LT 580632
Approved on: 14/02/2023



Diag. A



NOTE:
 Lot 1 has no frontage to a public road.

AMALGAMATION CONDITIONS

That Lot 1 hereon be transferred to the owners of Section 5 Annan Settlement (RT: CB10K/1329) and one record of title issued to include both parcels. (LINZ ref: 1780627).

That Lot 2 hereon, Lot 3 DP 361709 and Lot 2 DP 302102 (residue RT 251023) be held in the same record of title. (CSN Request 1783093)

Part IV A Conservation Act 1987
 Lots 1 and 2 hereon are subject to Part IV A Conservation Act 1987

P18911
 RC22030

Land District: Canterbury

Lots 1 and 2 being Subdivision of Lot 2 DP 361709

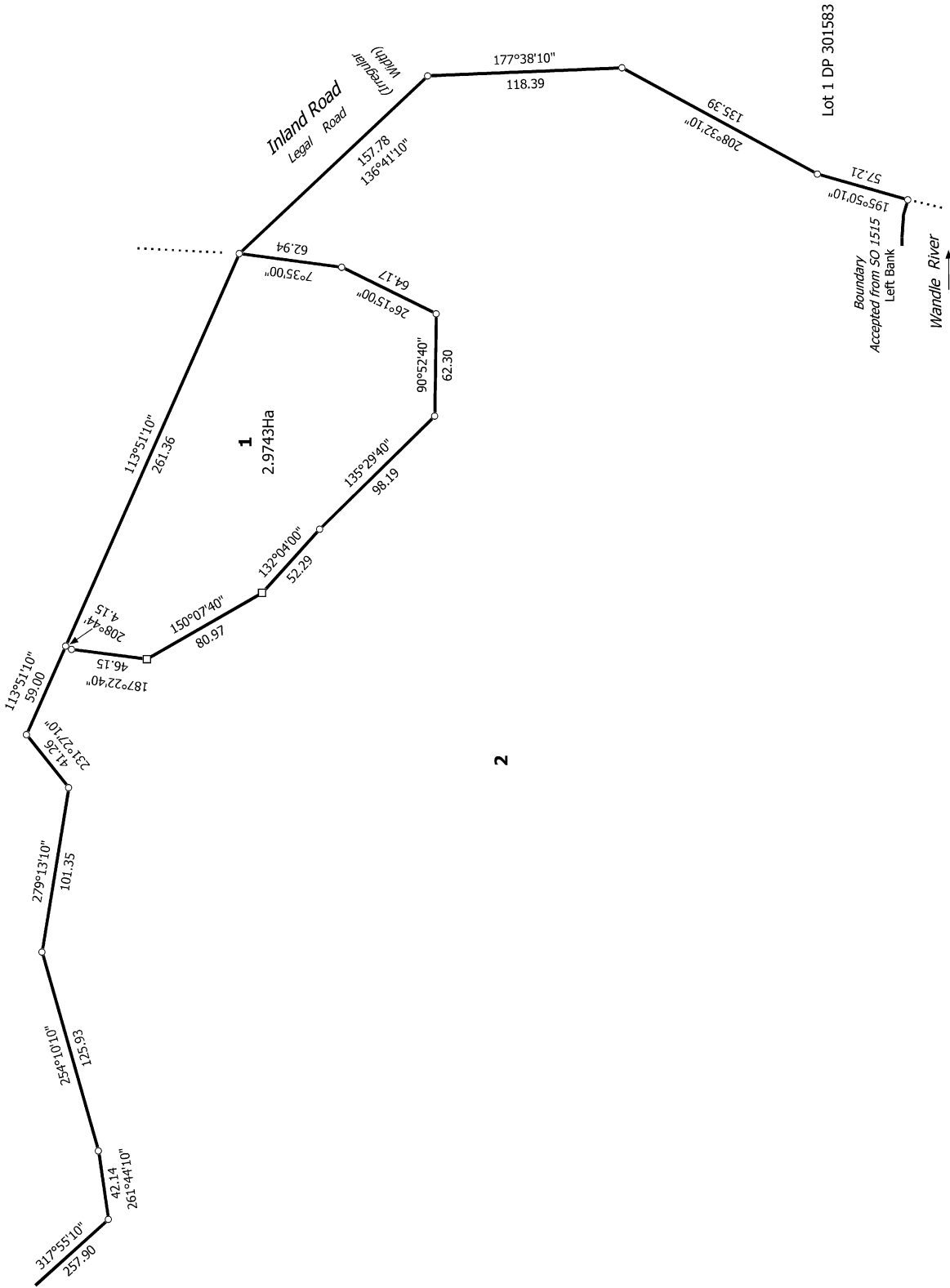
Surveyor: Christopher David Hawes
 Firm: Davie Lovell-Smith Ltd
 Date of Survey: 26/04/2022

Record of Survey
 LT 580632
 Approved on: 14/02/2023



Diag. AA

Section 5 Annan SETT



2

T 2/3

Land District: Canterbury

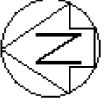
Digitally Generated Plan

Generated on: 14/02/2023 11:42am | Page 14 of 15

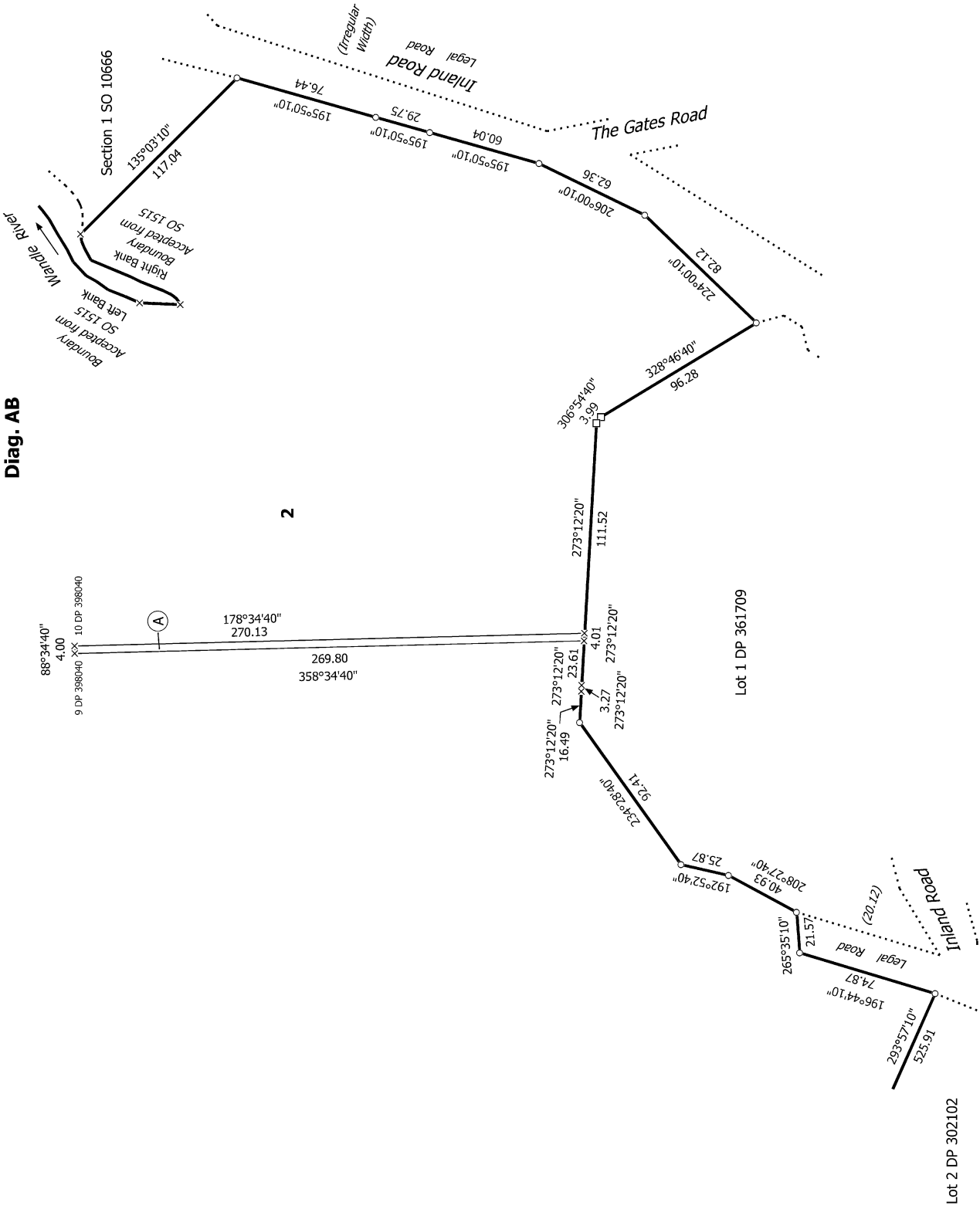
Lots 1 and 2 being Subdivision of Lot 2 DP 361709

Surveyor: Christopher David Hawes
Firm: Davie Lovell-Smith Ltd
Date of Survey: 26/04/2022

Record of Survey
LT 580632
Approved on: 14/02/2023



Diag. AB



Lot 2 DP 302102

Lot 1 DP 361709

T 3/3

Land District: Canterbury

Lots 1 and 2 being Subdivision of Lot 2 DP 361709

Surveyor: Christopher David Hawes
 Firm: Davie Lovell-Smith Ltd
 Date of Survey: 26/04/2022

Record of Survey
 LT 580632
 Approved on: 14/02/2023

Digitally Generated Plan

Generated on: 14/02/2023 11:42am | Page 15 of 15