



Record of Survey - LT 580722

Survey Number LT 580722
Surveyor Reference 288 -Roberton Road
Surveyor Arthur Ben Harper
Survey Firm Survey Worx LT Ltd
Surveyor Declaration I Arthur Ben Harper, being a licensed cadastral surveyor, certify that--
(a) this dataset provided by me and its related survey are accurate, correct and in accordance with the Cadastral Survey Act 2002 and Cadastral Survey Rules 2021; and
(b) the survey was undertaken by me or under my personal direction.
Declared on 18 Nov 2022 03:48 PM

Survey Details

Dataset Description Lot 1 being a subdivision of Part Lot 25 Deeds Plan 17
Purpose Limited Title
Status Approved as to Survey **Type** Survey
Land District North Auckland **Survey Class** Class A
Meridional Circuit Mount Eden 2000 **Vertical Datum** None

Survey Dates

Surveyed Date 11/08/2022 **Certified Date** 18/11/2022
Submitted Date 18/11/2022 15:48:40 **Survey Approval Date** 24/11/2022
Deposit Date

Referenced Surveys

Survey Number	Land District	Bearing Correction
LT 132715	North Auckland	0°00'00"
LT 174549	North Auckland	0°00'00"
DP 53994	North Auckland	0°00'00"
DP 447865	North Auckland	0°00'00"
DP 501298	North Auckland	0°00'00"

Territorial Authorities

Auckland Council

Comprised In

RT NA984/240 Ltd

Created Parcels

Parcels	Parcel Intent	Area	RT Reference
Lot 1 Deposited Plan 580722	Fee Simple Title	0.1038 Ha	1081838
Total Area		0.1038 Ha	

Mark and Vector

Survey Number DP 580722

Meridional Circuit Mount Eden 2000

From	To	Code	Bearing	Adpt Surv	Bearing Correction	Distance	Adpt Surv	Class
IT V LT 132715	IS II DP 116785	ob0	77°19'00"	A LT 132715	0°00'00"	42.49 A	LT 132715	
IS II DP 116785	IS III DP 116785	ob8	177°06'20"	A LT 132715	0°00'00"	22.43 A	LT 132715	
IS III DP 116785	SS 2189 SO 48482	ob9	177°06'20"	A LT 174549	0°00'00"	69.73 A	LT 174549	
SS 2189 SO 48482	IS I LT 132715	ob10	267°12'00"	A LT 174549	0°00'00"	74.64 A	LT 174549	
IS I LT 132715	IT II LT 132715	ob13	354°41'20"	A LT 132715	0°00'00"	68.52 A	LT 132715	
IT II LT 132715	IS IV LT 132715	ob14	333°11'00"	A LT 132715	0°00'00"	51.93 A	LT 132715	
IS IV LT 132715	IT V LT 132715	ob16	115°52'00"	A LT 132715	0°00'00"	64.70 A	LT 132715	
IT II LT 132715	IS III LT 132715	ob15	85°45'30"	M		22.36 M		
IS III LT 132715	IS III DP 116785	ob17	86°27'30"	A LT 132715	0°00'00"	55.17 A	LT 132715	
SS 2189 SO 48482	MA I DP 580722	ob11	355°22'00"	M		94.10 M		
MA I DP 580722	LP 2 DP 501298	ob18	359°04'30"	M		80.24 M		
LP 2 DP 501298	SS 2187 SO 54074	ob22	357°12'00"	M		63.37 M		
SS 2189 SO 48482	IS II DP 447865	ob12	339°57'45"	M		43.15 M		
IS II DP 447865	MA I DP 580722	ob23	7°41'00"	M		53.73 M		
MA I DP 580722	LP 4 DP 501298	ob19	334°51'00"	M		39.85 M		
LP 4 DP 501298	LP 2 DP 501298	ob24	19°29'50"	M		46.84 M		
MA I DP 580722	AP 4 DP 495147	ob20	359°18'50"	M		73.90 M		
MA I DP 580722	AP 3 DP 495147	ob21	3°34'30"	M		30.92 M		
LP 4 DP 501298	PEG 1 DP 501298	ob25	177°21'46"	A DP 501298	0°00'00"	12.15 A	DP 501298	
PEG 1 DP 501298	PEG 4 DP 501298	ob37	266°39'00"	A DP 501298	0°00'00"	38.41 A	DP 501298	
PEG 4 DP 501298	PEG DP 53994	ob42	266°39'00"	A DP 501298	0°00'00"	1.88 A	DP 501298	
PEG DP 53994	IS IV LT 132715	ob43	263°38'00"	A LT 132715	0°00'00"	40.37 A	LT 132715	
IT V LT 132715	MA I DP 580722	ob1	73°55'30"	M		40.07 M		
IT V LT 132715	IT II LT 132715	ob2	242°29'00"	M		39.23 M		
IT V LT 132715	IS III LT 132715	ob3	217°10'00"	M		20.67 M		
PEG 1 DP 501298	PEG LT 132715	ob38	177°06'20"	A DP 501298	0°00'00"	24.45 A	DP 501298	
PEG LT 132715	ABD 3 DP 580722	ob26	177°06'20"	A LT 132715	0°00'00"	0.04 C		
ABD 3 DP 580722	ABD 4 DP 580722	ob30	177°06'20"	A LT 132715	0°00'00"	25.91 C		Class A
ABD 4 DP 580722	PEG (19) LT 132715	ob29	177°06'20"	A LT 132715	0°00'00"	0.04 C		
PEG (19) LT 132715	ABD 23 DP 447865	ob27	177°06'20"	A DP 447865	0°00'00"	25.11 A	DP 447865	
ABD 23 DP 447865	IS II DP 447865	ob28	108°00'00"	A DP 447865	0°00'00"	5.65 A	DP 447865	

Mark and Vector

Survey Number DP 580722

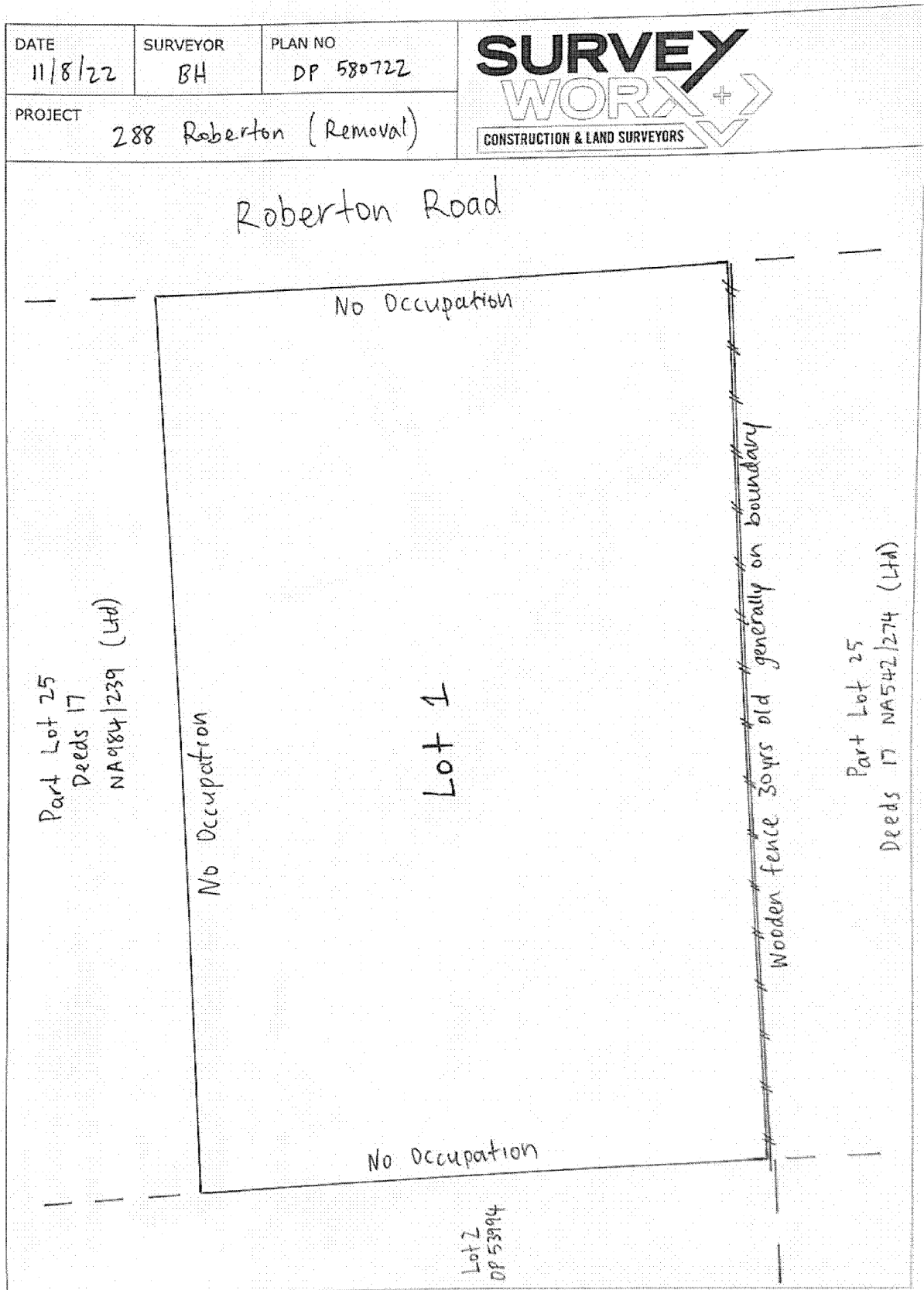
Meridional Circuit Mount Eden 2000

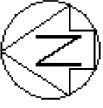
From	To	Code	Bearing	Adpt Surv	Bearing Correction	Distance	Adpt Surv	Class
PEG DP 53994	PEG LT 132715	ob44	177°03'10"	A DP 53994	0°00'00"	24.38 A	DP 53994	
PEG LT 132715	PEG 1 DP 580722	ob31	177°03'10"	A LT 132715	0°00'00"	5.04 C		Class A
PEG 1 DP 580722	PEG 2 DP 580722	ob41	177°03'10"	A LT 132715	0°00'00"	20.62 C		Class A
PEG 2 DP 580722	ABD (20) LT 132715	ob39	177°03'10"	A LT 132715	0°00'00"	0.05 C		
ABD (20) LT 132715	ABD (26) LT 132715	ob33	177°03'10"	A DP 53994	0°00'00"	0.20 A	LT 132715	
ABD (26) LT 132715	ABD 27 DP 447865	ob34	177°11'30"	A LT 174549	0°00'00"	24.90 A	DP 447865	
ABD 27 DP 447865	PEG 36 DP 447865	ob35	87°11'30"	A DP 447865	0°00'00"	27.30 A	DP 447865	
PEG 36 DP 447865	ABD 23 DP 447865	ob36	87°11'30"	A DP 447865	0°00'00"	12.97 A	DP 447865	
PEG LT 132715	ABD 3 DP 580722	ob32	86°50'30"	C		40.26 C		Class A
PEG 2 DP 580722	ABD 4 DP 580722	ob40	87°11'30"	C		40.23 C		Class A
IT V LT 132715	PEG 1 DP 580722	ob4	281°18'00"	M		16.91 M		
IT V LT 132715	PEG 2 DP 580722	ob5	221°56'00"	M		23.22 M		
IT V LT 132715	ABD 3 DP 580722	ob6	65°38'30"	M		25.65 M		
IT V LT 132715	ABD 4 DP 580722	ob7	121°48'00"	M		29.03 M		

Mark Name	Mark Condition	Description
IS II DP 116785	Searched For and Not Found	
IS III DP 116785	Searched For and Not Found	
IS IV LT 132715	Searched For and Not Found	

*** End of Report ***

Occupation Diagram





Roberton Road
(Formed & Legal)

Diag. A

Part Lot 25 DEEDS 17
(NA984/239)

86°50'30"
40.26

ABD 3

177°06'20"
25.91

ABD 4

1
0.1038Ha

87°11'30"
40.23

Part Lot 25 DEEDS 17
(NA542/274)

177°03'10"
5.04

LT 132715

1

177°03'10"
20.62

Lot 2
DP 53994
(NA55/237)

2

Part Lot 24
DEEDS 17

T 1/1

Land District: North Auckland

Digitally Generated Plan

Generated on: 24/11/2022 10:05am Page 7 of 7

Lot 1 being a subdivision of Part Lot 25 Deeds Plan 17

Surveyor: Arthur Ben Harper
Firm: Survey Worx LT Ltd
Date of Survey: 11/08/2022

Record of Survey
LT 580722
Approved on: 24/11/2022