



Record of Survey - LT 581498

Survey Number	LT 581498
Surveyor Reference	6334 - Subdivision Guise Brook Street Riverton
Surveyor	David Brian Manson
Survey Firm	TrueSouth Survey Services Ltd
Surveyor Declaration	I David Brian Manson, being a licensed cadastral surveyor, certify that-- (a) this dataset provided by me and its related survey are accurate, correct and in accordance with the Cadastral Survey Act 2002 and Cadastral Survey Rules 2021; and (b) the survey was undertaken by me or under my personal direction. Declared on 10 Jan 2023 10:55 AM

Survey Details

Dataset Description	Lots 1 - 4 being a subdivision of Parts Section 3 Block I Jacobs River Hundred		
Purpose	LT Subdivision		
Status	Approved as to Survey	Type	Survey
Land District	Southland	Survey Class	Class A
Meridional Circuit	Bluff 2000	Vertical Datum	None

Survey Dates

Surveyed Date	22/08/2022	Certified Date	10/01/2023
Submitted Date	10/01/2023 10:55:22	Survey Approval Date	11/01/2023
Deposit Date			

Referenced Surveys

Survey Number	Land District	Bearing Correction
DP 9559	Southland	-0°07'30"
DP 9256	Southland	-0°07'30"
LT 381330	Southland	0°00'00"
DP 443190	Southland	0°00'00"

Territorial Authorities

Southland District

Comprised In

RT SL190/197 Ltd
RT SL136/168 Ltd

Created Parcels

Parcels	Parcel Intent	Area	RT Reference
Lot 1 Deposited Plan 581498	Fee Simple Title	0.2674 Ha	1084643
Lot 2 Deposited Plan 581498	Fee Simple Title	0.3156 Ha	1084644
Lot 4 Deposited Plan 581498	Fee Simple Title	0.1765 Ha	1084646
Lot 3 Deposited Plan 581498	Fee Simple Title	0.1828 Ha	1084645
Area A Deposited Plan 581498	Easement		
Total Area		0.9423 Ha	

Mark and Vector

Survey Number DP 581498

Meridional Circuit Bluff 2000

From	To	Code	Bearing	Adpt Surv	Bearing Correction	Distance	Adpt Surv	Class
SS MORES SO 11312	IT 2 DP 581498	ob0	113°32'27" M			756.30 M		
IT 2 DP 581498	PIN 1 SO 523147	ob2	77°31'55" M			638.40 M		
IT 2 DP 581498	IS I DP 9979	ob3	351°40'14" M			535.53 M		
IT 2 DP 581498	PIN 1 DP 581498	ob4	195°20'17" M			840.30 M		
PIN 1 DP 581498	PIN 1 SO 523147	ob11	41°43'36" M			1,270.49 M		
PIN 1 DP 581498	IS I DP 9979	ob12	6°09'42" M			1,348.04 M		
PIN 1 DP 581498	IS X DP 9001	ob13	335°38'40" M			108.08 M		
IS X DP 9001	IT 3 DP 417867	ob14	30°40'10" M			255.71 M		
IT 3 DP 417867	CN 1 LT 381330	ob15	345°37'40" M			324.41 M		
CN 1 LT 381330	IT 2 LT 381330	ob16	31°53'40" M			192.01 M		
IT 2 LT 381330	IT 2 DP 581498	ob19	82°44'30" M			116.42 M		
IT 2 DP 581498	IT V DP 9256	ob5	191°32'00" M			26.58 M		
IT V DP 9256	SS BROOK SO 11312	ob22	31°46'40" M			79.97 M		
SS BROOK SO 11312	IT X DP 9559	ob25	220°30'00" M			40.96 M		
IT X DP 9559	IT 2 DP 581498	ob32	223°21'00" M			14.84 M		
SS MORES SO 11312	SS BROOK SO 11312	ob1	109°36'33" M			775.10 M		
SS BROOK SO 11312	IT VI DP 9256	ob26	29°33'15" A	DP 443190	0°00'00"	165.57 A	DP 443190	
IT VI DP 9256	IT V DP 9256	ob33	210°16'20" A	DP 443190	0°00'00"	245.49 A	DP 443190	
IT VI DP 9256	IT VII DP 9256	ob34	30°16'20" A	DP 443190	0°00'00"	58.05 A	DP 443190	
IT VII DP 9256	IS VI DP 8210	ob35	30°16'20" A	DP 443190	0°00'00"	54.82 A	DP 9256	
IS VI DP 8210	IS I DP 9559	ob36	303°43'30" A	DP 9559	-0°07'30"	2.99 A	DP 9559	
IS I DP 9559	IT VI DP 9559	ob37	210°40'00" A	DP 9559	-0°07'30"	177.44 A	DP 9559	
IT VI DP 9559	IT X DP 9559	ob38	210°40'00" A	DP 9559	-0°07'30"	141.50 A	DP 9559	
IT VI DP 9559	PEG (1) DP 9559	ob39	308°49'30" A	DP 9559	-0°07'30"	4.90 A	DP 9559	
IT VI DP 9559	IT V DP 9559	ob40	306°59'10" A	DP 9559	-0°07'30"	54.81 A	DP 9559	
IT V DP 9559	PEG (2) DP 9559	ob41	182°06'30" A	DP 9559	-0°07'30"	5.64 A	DP 9559	
PEG (2) DP 9559	PEG (1) DP 9559	ob43	121°08'00" A	DP 9559	-0°07'30"	46.93 A	DP 9559	
IT 2 LT 381330	DISK D LT 381330	ob20	99°10'00" A	LT 381330	0°00'00"	47.37 A	LT 381330	
IT V DP 9256	PEG A DP 581498	ob23	297°43'30" A	DP 9256	-0°07'30"	10.00 A	DP 9256	
PEG A DP 581498	DISK G DP 581498	ob45	30°33'50" A	DP 9256	-0°07'30"	39.53 C		Class A
DISK G DP 581498	PEG F DP 581498	ob54	30°33'50" A	DP 9256	-0°07'30"	65.78 C		Class A
PEG F DP 581498	DISK C DP 581498	ob52	30°33'50" A	DP 9256	-0°07'30"	56.86 C		Class A
DISK C DP 581498	PEG (1) DP 9559	ob48	30°33'50" A	DP 9256	-0°07'30"	20.12 C		

Mark and Vector

Survey Number DP 581498

Meridional Circuit Bluff 2000

From	To	Code	Bearing	Adpt Surv	Bearing Correction	Distance	Adpt Surv	Class
DISK D LT 381330	PEG B DP 581498	ob44	30°27'40"	C		28.24 C		
PEG B DP 581498	PEG H DP 581498	ob47	30°27'40"	C		36.20 C		Class A
PEG H DP 581498	PEG E DP 581498	ob56	30°27'40"	C		69.35 C		Class A
PEG D DP 581498	PEG (2) DP 9559	ob50	30°27'40"	C		20.12 C		
PEG A DP 581498	PEG B DP 581498	ob46	300°16'00"	A DP 9256	-0°07'30"	46.59 C		Class A
DISK C DP 581498	PEG D DP 581498	ob49	301°08'00"	C		46.89 C		Class A
SS BROOK SO 11312	IT V DP 9559	ob27	0°49'40"	M		123.54 M		
IT 2 DP 581498	IT V DP 9559	ob6	13°07'20"	M		169.91 M		
IT V DP 9559	PEG (1) DP 9559	ob42	126°48'00"	M		49.91 M		
SS BROOK SO 11312	PEG F DP 581498	ob28	5°26'00"	M		27.47 M		
SS BROOK SO 11312	PEG E DP 581498	ob29	323°36'20"	M		63.52 M		
DISK G DP 581498	PEG H DP 581498	ob55	296°11'00"	C		46.79 C		Class A
IT 2 LT 381330	IT 3 DP 581498	ob21	136°39'20"	M		150.89 M		
IT 3 DP 581498	IT XXVc SO 5141	ob57	178°47'00"	M		158.81 M		
IT XXVc SO 5141	CN 1 LT 381330	ob58	296°50'50"	M		233.57 M		
CN 1 LT 381330	IT 4 DP 581498	ob17	97°39'30"	M		55.54 M		
IT 4 DP 581498	IT 3 DP 581498	ob59	67°58'00"	M		161.78 M		
CN 1 LT 381330	DISK E LT 381330	ob18	98°29'30"	M		54.08 M		
DISK E LT 381330	IT 4 DP 581498	ob64	69°30'00"	M		1.67 M		
DISK E LT 381330	DISK F LT 381330	ob65	125°45'30"	A LT 381330	0°00'00"	41.23 A LT 381330		
DISK F LT 381330	IT 4 DP 581498	ob67	307°44'00"	M		40.33 M		
DISK E LT 381330	PEG L DP 581498	ob66	30°05'45"	A LT 381330	0°00'00"	36.34 C		
PEG L DP 581498	PEG M DP 581498	ob74	30°05'45"	A LT 381330	0°00'00"	40.23 C		Class A
PEG M DP 581498	DISK D LT 381330	ob75	30°05'45"	A LT 381330	0°00'00"	112.34 C		
IT V DP 9256	UNMK (3) DP 9256	ob24	236°24'30"	A DP 9256	-0°07'30"	22.91 A DP 9256		
DISK F LT 381330	UNMK 10 DP 581498	ob68	120°35'00"	A LT 381330	0°00'00"	3.92 C		

Mark and Vector

Survey Number DP 581498

Meridional Circuit Bluff 2000

From	To	Code	Bearing	Adpt Surv	Bearing Correction	Distance	Adpt Surv	Class
UNMK 10 DP 581498	PEG J DP 581498	ob69	30°33'50"	A DP 9256	-0°07'30"	40.08 C		
PEG J DP 581498	PEG K DP 581498	ob70	30°33'50"	A DP 9256	-0°07'30"	40.23 C		Class A
PEG K DP 581498	UNMK (3) DP 9256	ob72	30°33'50"	A DP 9256	-0°07'30"	120.70 C		
PEG J DP 581498	PEG L DP 581498	ob71	300°34'00"	C		45.28 C		Class A
PEG K DP 581498	PEG M DP 581498	ob73	300°34'00"	C		45.61 C		Class A
IT 4 DP 581498	PEG L DP 581498	ob60	28°22'00"	M		35.07 M		
IT 4 DP 581498	PEG M DP 581498	ob61	29°17'20"	M		75.29 M		
IT 4 DP 581498	PEG J DP 581498	ob62	81°59'00"	M		56.20 M		
IT 4 DP 581498	PEG K DP 581498	ob63	60°50'00"	M		87.16 M		
IT 2 DP 581498	PEG A DP 581498	ob7	213°31'00"	M		25.66 M		
IT 2 DP 581498	PEG B DP 581498	ob8	272°12'00"	M		54.45 M		
IT 2 DP 581498	PEG H DP 581498	ob9	312°43'00"	M		49.07 M		
IT 2 DP 581498	DISK G DP 581498	ob10	25°09'00"	M		13.97 M		
SS BROOK SO 11312	PEG D DP 581498	ob30	355°06'00"	M		100.92 M		
SS BROOK SO 11312	DISK C DP 581498	ob31	22°26'40"	M		82.56 M		
PEG F DP 581498	UNMK A1 DP 581498	ob53	300°33'00"	C		43.78 C		Class A
UNMK A1 DP 581498	PEG E DP 581498	ob76	300°33'00"	C		3.00 C		Class A
PEG E DP 581498	UNMK A3 DP 581498	ob51	30°27'40"	C		16.19 C		Class A
UNMK A3 DP 581498	PEG D DP 581498	ob78	30°27'40"	C		41.15 C		Class A
UNMK A1 DP 581498	UNMK A2 DP 581498	ob77	30°27'40"	C		16.20 C		Class A
UNMK A2 DP 581498	UNMK A3 DP 581498	ob79	300°28'00"	C		3.00 C		Class A

Mark Name	Mark Condition	Description
CN 1 LT 381330		CONCRETE NAIL FLUSH IN ROCK
DISK E LT 381330		BM DISK ON TOP OF POST
DISK F LT 381330		BM DISK ON TOP OF POST

Mark and Vector

Survey Number DP 581498

Meridional Circuit Bluff 2000

Mark Name	Mark Condition	Description
IT 2 DP 581498		dn 0.3 in grass berm
IT 2 LT 381330		dn 0.4 in grass
IT 3 DP 417867		Down 0.2m in rise above gravel driveway. 2.77m from spiked sleeper gate post. 1.35m from round timber fence post.
IT 3 DP 581498		dn 0.3 in grass
IT 4 DP 581498		dn 0.3 in gass
IT V DP 9559		dn 0.3 in grass
IT VI DP 9256		Mark down 0.02 in seal on Brook Street
IT VII DP 9256		Mark down 0.02 in seal on Brook Street
IT XXVc SO 5141		dn 0.25 at edge of gravel road
PIN 1 DP 581498		flush on rock
PIN 1 SO 523147		Stainless steel pin flush on top of conc. Kerb.
SS BROOK SO 11312		under metal cover at edge of seal
SS MORES SO 11312		Bronze plaque (L & S Dept) in 0.40 x 0.40 m concrete block 0.01 m above ground level. No known buried mark. Bronze ID plaque.

*** End of Report ***

Schedule / Memorandum

Land Registration District

Southland

Survey Number

LT 581498

Territorial Authority (the Council)

Southland District

Memorandum of Easements

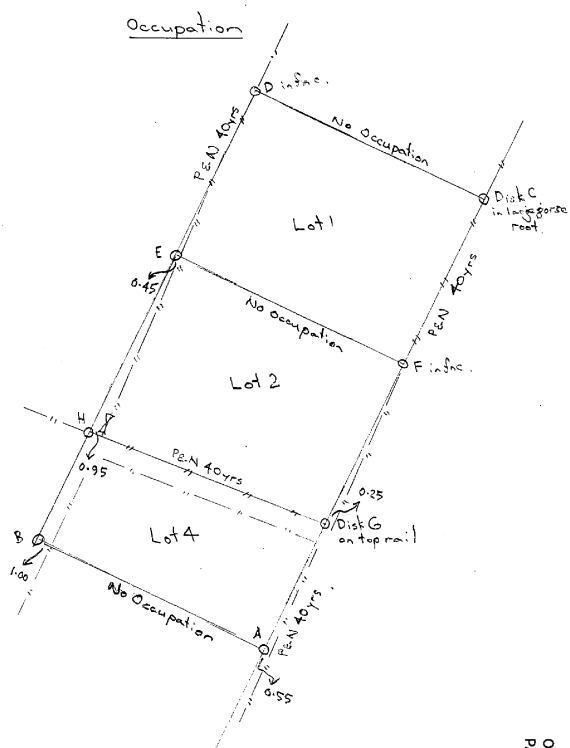
Last Edited: 27 Sep 2022 14:07:48

<u>Purpose</u>	<u>Shown</u>	<u>Burdened Land</u> (<u>Servient Tenement</u>)	<u>Benefited Land</u> (<u>Dominant Tenement</u>)
Right to drain water	A	Lot 1	Lot 2

Occupation Diagram



FB NO.		JOB NO.	
SURVEYOR'S PAGE	SURVEYOR	DATE	# 6334
1	<i>D. Mans</i>	20 Sept 2022	PLAN NO. 581498

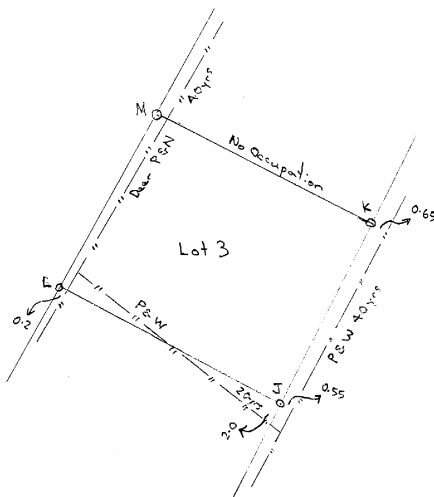


09 218 5566 www.bdstl.com/nz

OFFICE
PAGE

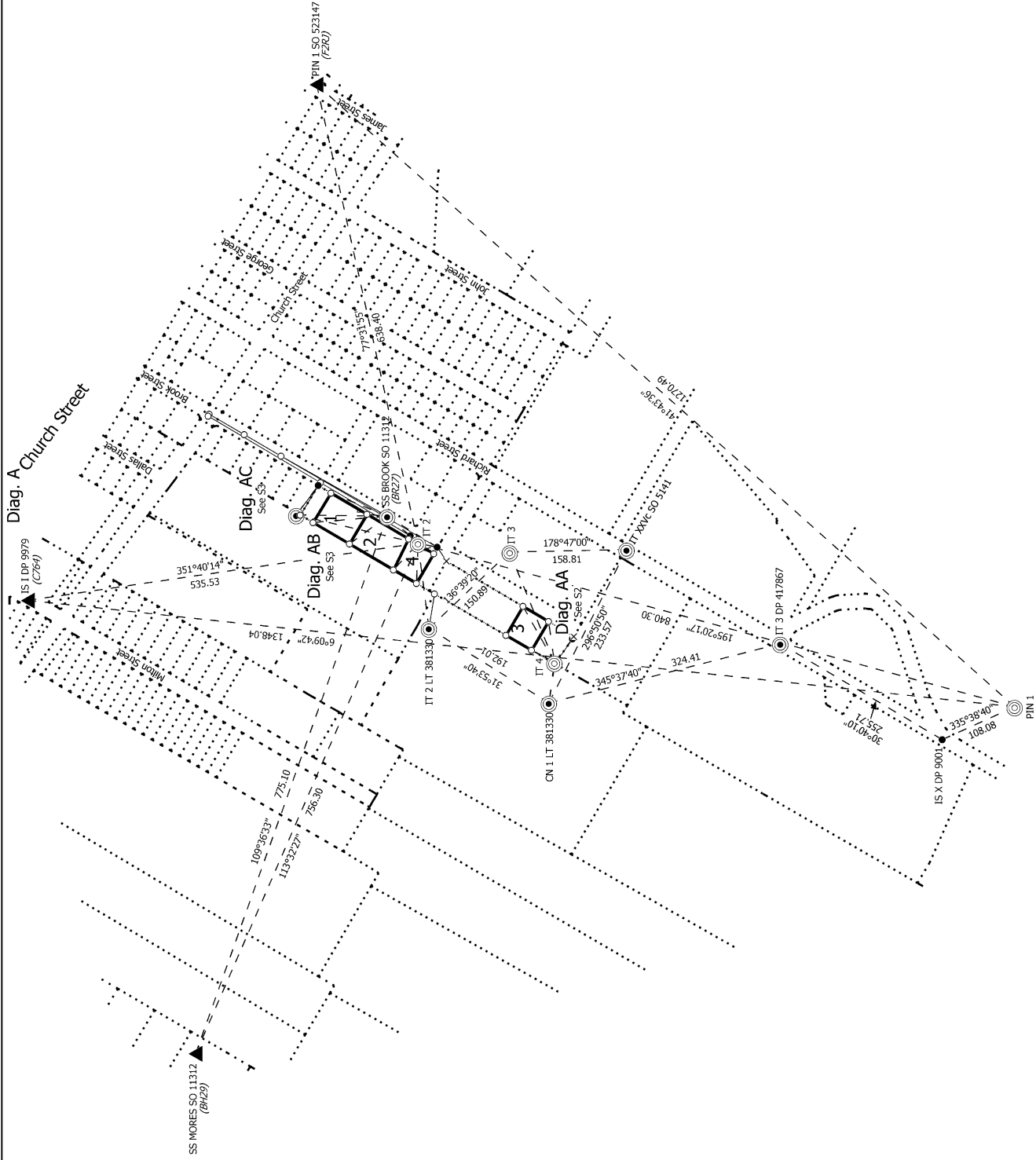


FB NO.		JOB NO.	
SURVEYOR'S PAGE	SURVEYOR	DATE	# 6334
2	<i>D. Mans</i>	20 Sept 2022	PLAN NO. 581498



09 218 5566 www.bdstl.com/nz

OFFICE
PAGE



S 1/3

Land District: Southland
 Digitally Generated Plan
 Generated on: 11/01/2023 07:15am Page 8 of 11

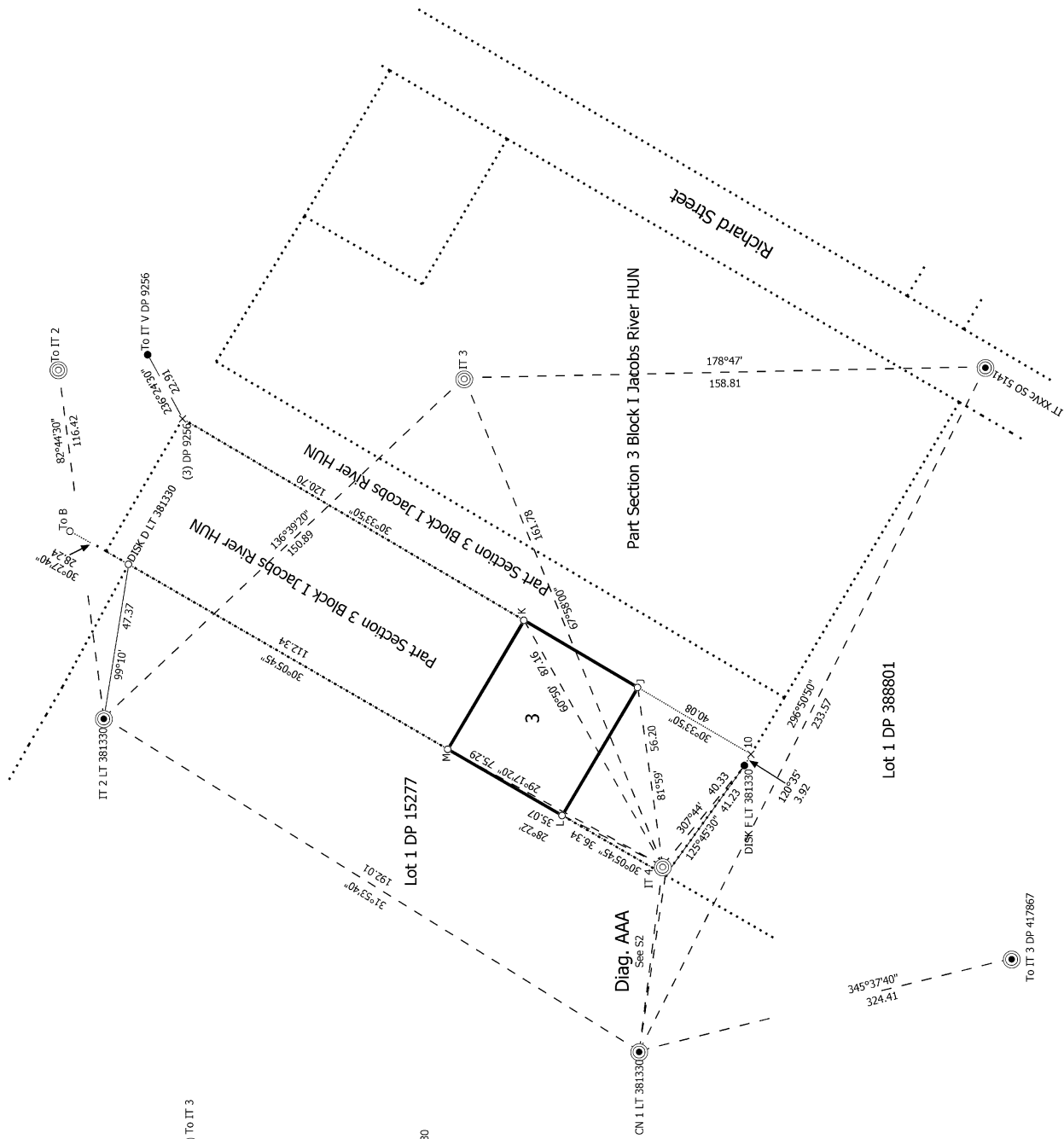
Record of Survey
 LT 581498
 Approved on: 11/01/2023

Surveyor: David Brian Manson
 Firm: TrueSouth Survey Services Ltd
 Date of Survey: 22/08/2022

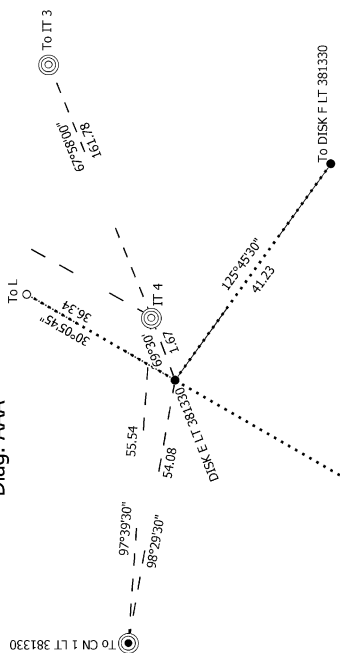
Lots 1 - 4 being a subdivision of Parts Section 3 Block I Jacobs River Hundred



Diag. AA



Diag. AAA

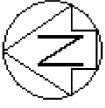


Record of Survey
 LT 581498
 Approved on: 1/01/2023

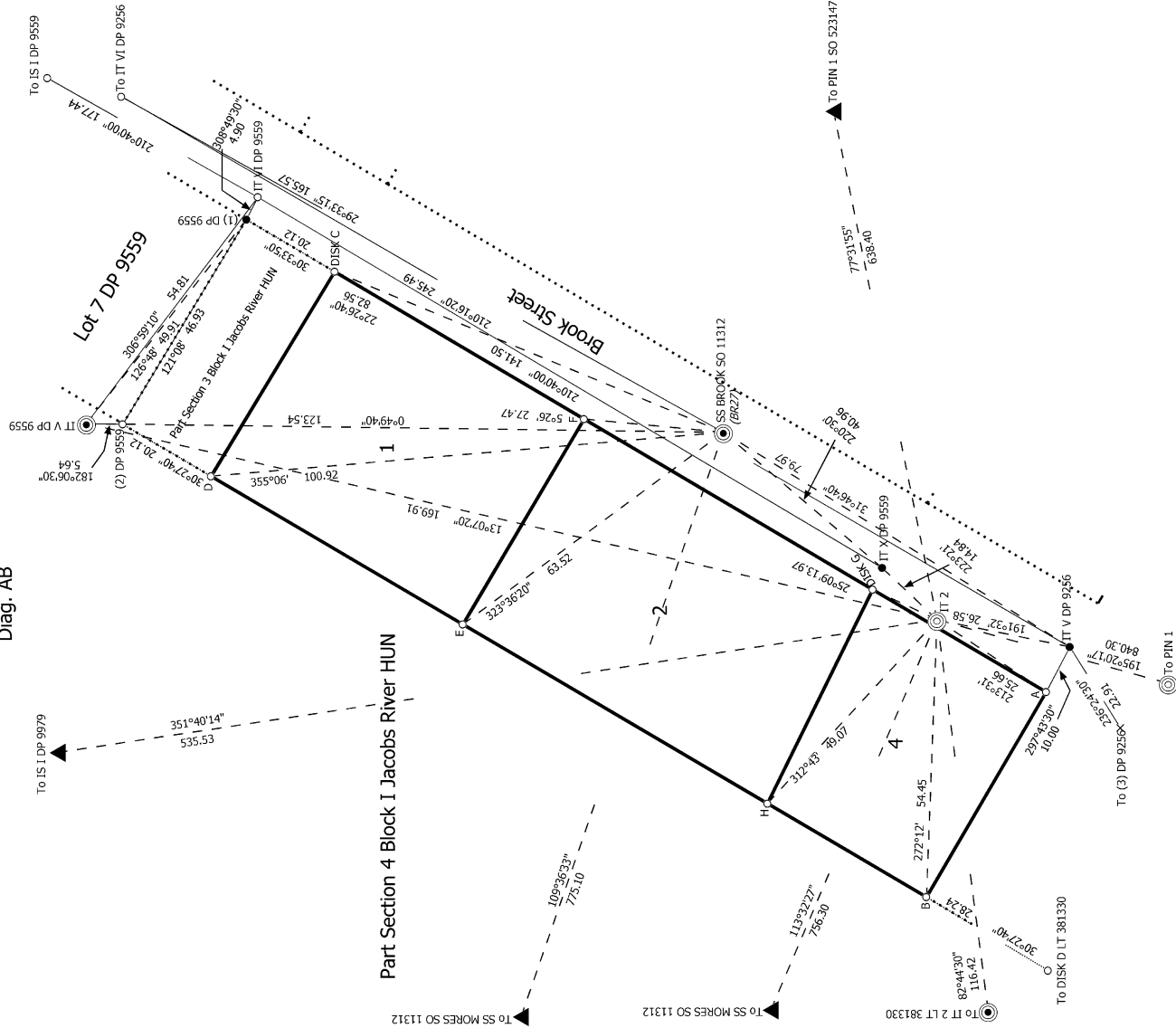
Surveyor: David Brian Manson
 Firm: TrueSouth Survey Services Ltd
 Date of Survey: 22/08/2022

Lots 1 - 4 being a subdivision of Parts Section 3 Block I Jacobs River Hundred

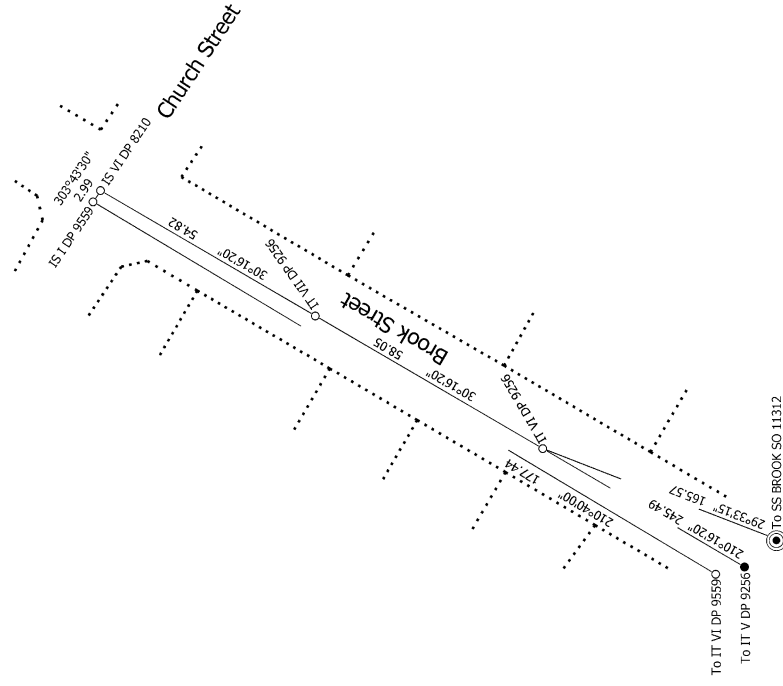
Land District: Southland
 Digitally Generated Plan
 Generated on: 11/01/2023 07:15am Page 9 of 11



Diag. AB



Diag. AC



S 3/3

Land District: Southland

Lots 1 - 4 being a subdivision of Parts Section 3 Block I Jacobs River Hundred

Surveyor: David Brian Manson
Firm: TrueSouth Survey Services Ltd
Date of Survey: 22/08/2022

Record of Survey
LT 581498
Approved on: 11/01/2023

Digitally Generated Plan

Generated on: 11/01/2023 07:15am; Page 10 of 11

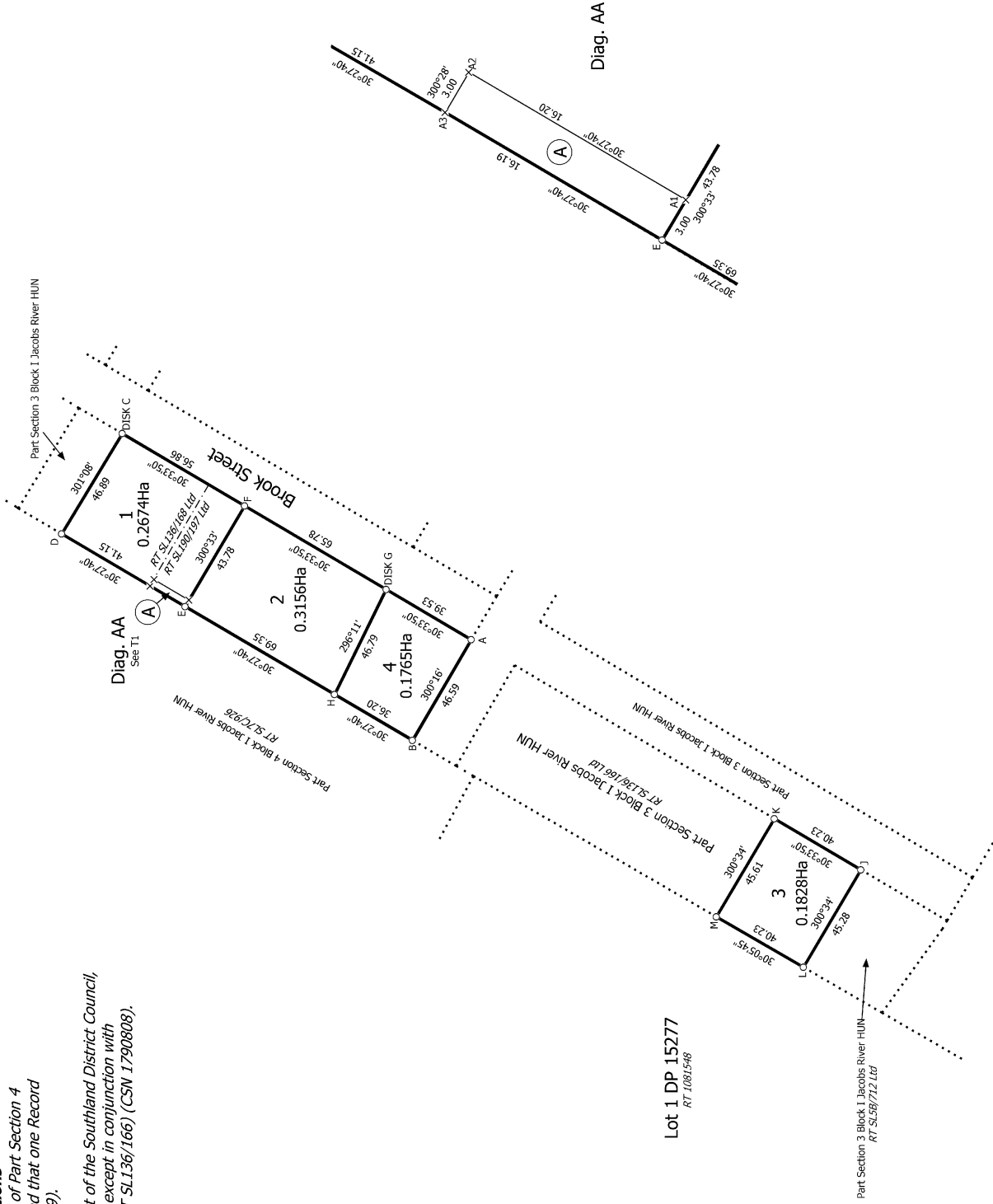


Diag. A

Amalgamation Conditions

That Lot 4 hereon be transferred to the owners of Part Section 4 Block I Jacobs River Hundred (RT SL7C/926) and that one Record of Title be issued for both parcels (CSN 1805319).

That Lot 3 hereon shall not, without the consent of the Southland District Council, be transferred, leased or otherwise disposed of except in conjunction with Part Section 3 Block I Jacobs River Hundred (RT SL136/166) (CSN 1790808).



Lot 1 DP 15277
RT 1081548

Lot 1 DP 388801

T 1/1

Land District: Southland

Lots 1 - 4 being a subdivision of Parts Section 3 Block I Jacobs River Hundred

Record of Survey
LT 581498

Surveyor: David Brian Manson
Firm: TrueSouth Survey Services Ltd
Date of Survey: 22/08/2022

Digitally Generated Plan

Generated on: 11/01/2023 07:15am | Page 11 of 11

Approved on: 11/01/2023