



Record of Survey - LT 583817

Survey Number LT 583817
Surveyor Reference 36350 - Lester Lane
Surveyor Christopher Paul Hopper
Survey Firm Davis Ogilvie & Partners Ltd (Christchurch)
Surveyor Declaration I Christopher Paul Hopper, being a licensed cadastral surveyor, certify that--
(a) this dataset provided by me and its related survey are accurate, correct and in accordance with the Cadastral Survey Act 2002 and Cadastral Survey Rules 2021; and
(b) the survey was undertaken by me or under my personal direction.
Declared on 08 Mar 2023 05:03 PM

Survey Details

Dataset Description LOT 1 BEING ADVERSE POSSESSION OF PART RURAL SECTION 9
Purpose Application
Status Approved as to Survey
Land District Canterbury
Meridional Circuit Mount Pleasant 2000

Type	Survey
Survey Class	Class A
Vertical Datum	None

Survey Dates

Surveyed Date	05/12/2022	Certified Date	08/03/2023
Submitted Date	08/03/2023 17:03:18	Survey Approval Date	21/03/2023
Deposit Date			

Referenced Surveys

Survey Number	Land District	Bearing Correction
DP 53315	Canterbury	0°01'20"
SO 18812	Canterbury	0°00'30"
SO 7623	Canterbury	0°01'20"
SO 9568	Canterbury	0°01'20"
SO 2137	Canterbury	0°01'20"
SO 20142	Canterbury	0°00'30"
DP 81924	Canterbury	0°00'30"
DP 388997	Canterbury	0°00'30"
SO 464028	Canterbury	0°00'00"
DP 370306	Canterbury	0°00'30"
SO 11807	Canterbury	0°01'20"
SO 351602	Canterbury	0°00'30"
SO 365274	Canterbury	0°00'30"
SO 376333	Canterbury	0°00'30"
SO 520512	Canterbury	0°00'00"

Territorial Authorities

Christchurch City



Record of Survey - LT 583817

Comprised In

Deeds Index 4D 591

Created Parcels

Parcels	Parcel Intent	Area	RT Reference
Lot 1 Deposited Plan 583817	Fee Simple Title	0.0613 Ha	1106698
Part Rural Section 9	Residue Parcel		
Total Area		<hr/> 0.0613 Ha	

Mark and Vector

Survey Number DP 583817

Meridional Circuit Mount Pleasant 2000

From	To	Code	Bearing	Adpt Surv	Bearing Correction	Distance	Adpt Surv	Class
RN II SO 376333	MN IV DP 388997	ob0	269°57'30"	A SO 464028	0°00'00"	185.21	A SO 464028	
MN IV DP 388997	MN III DP 388997	ob2	356°48'30"	A SO 464028	0°00'00"	56.55	A SO 464028	
MN III DP 388997	MN II DP 388997	ob3	317°50'45"	A SO 464028	0°00'00"	118.08	A SO 464028	
MN II DP 388997	IR VI DP 388997	ob4	47°04'00"	A SO 464028	0°00'00"	83.35	A SO 464028	
IR VI DP 388997	IT III SO 9568	ob5	97°38'20"	A SO 464028	0°00'00"	24.61	A SO 464028	
IT III SO 9568	IS II SO 9568	ob10	97°38'20"	A SO 464028	0°00'00"	50.66	A SO 464028	
IS II SO 9568	IS III DP 53315	ob14	97°38'20"	A SO 464028	0°00'00"	13.85	A SO 464028	
IS III DP 53315	IS I SO 9568	ob15	97°38'20"	A SO 464028	0°00'00"	101.54	A SO 464028	
IS I SO 9568	RN II SO 376333	ob16	174°15'10"	A SO 464028	0°00'00"	176.20	A SO 464028	
RN II SO 376333	BOLT 1 DP 583817	ob1	315°33'25"	M		301.41	M	
BOLT 1 DP 583817	IS III DP 53315	ob25	105°53'00"	M		96.45	M	
BOLT 1 DP 583817	IT 2 DP 583817	ob26	98°41'40"	M		214.29	M	
IT 2 DP 583817	MA 3 DP 583817	ob31	262°29'00"	M		64.67	M	
MA 3 DP 583817	BOLT 1 DP 583817	ob36	285°27'50"	M		153.27	M	
BOLT 1 DP 583817	IS II SO 9568	ob27	107°15'50"	M		82.76	M	
MA 3 DP 583817	IS II SO 9568	ob37	283°21'30"	M		70.59	M	
MA 3 DP 583817	IS III DP 53315	ob38	284°45'30"	M		56.83	M	
IT 2 DP 583817	IS II SO 9568	ob32	273°22'40"	M		133.03	M	
BOLT 1 DP 583817	PEG (6) DP 81924	ob28	104°58'00"	M		29.56	M	
IT III SO 9568	PEG (2) SO 20142	ob11	35°13'30"	A DP 81924	0°00'30"	15.91	A DP 81924	
IR VI DP 388997	PEG 37 SO 464028	ob6	16°07'00"	A SO 464028	0°00'00"	10.19	A SO 18812	
IR VI DP 388997	PEG (2) SO 18812	ob7	12°03'30"	A DP 81924	0°00'30"	10.75	A DP 81924	
IR VI DP 388997	PEG 3e DP 388997	ob8	7°41'30"	A DP 81924	0°00'30"	14.10	A DP 81924	
IR VI DP 388997	PEG (6) DP 81924	ob9	73°58'00"	A SO 464028	0°00'00"	25.11	A SO 464028	
IT III SO 9568	PEG 3e DP 388997	ob12	307°28'30"	A DP 388997	0°00'30"	28.35	A DP 388997	
PEG (2) SO 20142	PEG 3e DP 388997	ob23	277°38'20"	A SO 20142	0°00'30"	31.96	A SO 20142	Class A
PEG (6) DP 81924	PEG 37 SO 464028	ob39	277°38'20"	A SO 9568	0°01'20"	21.49	A SO 9568	Class A

Mark and Vector

Survey Number DP 583817

Meridional Circuit Mount Pleasant 2000

From	To	Code	Bearing	Adpt Surv	Bearing Correction	Distance	Adpt Surv	Class
PEG 37 SO 464028	PEG (2) SO 18812	ob21	321°04'30"	A SO 18812	0°00'30"	0.93 A	SO 18812	Class A
PEG (2) SO 18812	PEG 3e DP 388997	ob22	354°02'50"	A DP 81924	0°00'30"	3.48 A	DP 81924	Class A
IS I SO 9568	PEG NO REC DP 53315	ob17	200°26'20"	A DP 53315	0°01'20"	10.29 A	DP 53315	
PEG NO REC DP 53315	PEG (3) SO 2137	ob46	359°50'25"	A SO 2137	0°01'20"	20.31 A	SO 2137	
PEG (3) SO 2137	PEG 45 DP 583817	ob47	277°38'20"	A SO 2137	0°01'20"	0.20 C		
PEG 45 DP 583817	PEG (2) SO 2137	ob50	277°38'20"	A SO 2137	0°01'20"	140.13 C		Class A
PEG (2) SO 2137	PEG 44 DP 583817	ob48	277°38'20"	A SO 2137	0°01'20"	11.77 C		Class A
PEG 44 DP 583817	PEG (6) DP 81924	ob49	277°38'20"	A SO 2137	0°01'20"	10.51 C		Class A
PEG (2) SO 20142	PEG 44 DP 583817	ob24	167°01'30"	C		4.31 C		Class A
IT III SO 9568	PEG (6) DP 81924	ob13	358°32'20"	A SO 9568	0°01'20"	10.21 A	SO 9568	
BOLT 1 DP 583817	PEG 44 DP 583817	ob29	103°02'30"	M		40.01 M		
PEG 45 DP 583817	NAIL 34 DP 583817	ob51	359°50'25"	A SO 7623	0°01'20"	4.06 A	SO 2137	Class A
NAIL 34 DP 583817	PEG (2) SO 20142	ob44	277°38'20"	A SO 20142	0°00'30"	152.89 A	SO 20142	Class A
IS I SO 9568	MARK 86 SO 7623	ob18	359°50'25"	A SO 7623	0°01'20"	296.38 A	SO 20142	
MARK 86 SO 7623	PEG (3) SO 7623	ob19	264°01'56"	A SO 7623	0°01'20"	3.84 A	SO 7623	
PEG (3) SO 7623	PEG (4) SO 7623	ob43	264°01'56"	A SO 7623	0°01'20"	11.13 A	SO 7623	
PEG (4) SO 7623	PEG (6) SO 20142	ob40	264°01'56"	A SO 7623	0°01'20"	176.76 A	SO 7623	
PEG (6) SO 20142	IT X SO 20142	ob41	295°05'30"	A SO 20142	0°00'30"	15.92 A	SO 20142	
IT X SO 20142	IR IX SO 20142	ob30	168°39'35"	A SO 20142	0°00'30"	103.32 A	SO 20142	
IR IX SO 20142	IR VI DP 388997	ob42	181°13'00"	A SO 20142	0°00'30"	156.58 A	SO 20142	
MARK 86 SO 7623	PEG (2) SO 7623	ob20	198°11'45"	A SO 7623	0°01'20"	12.14 A	SO 7623	
PEG (2) SO 7623	PEG (3) SO 7623	ob52	359°50'25"	A SO 7623	0°01'20"	11.13 A	SO 7623	
NAIL 34 DP 583817	PEG (2) SO 7623	ob45	359°50'25"	C		270.10 C		
IT 2 DP 583817	NAIL 34 DP 583817	ob33	288°02'30"	M		23.44 M		
IT 2 DP 583817	PEG 45 DP 583817	ob34	278°10'30"	M		22.51 M		

Mark and Vector

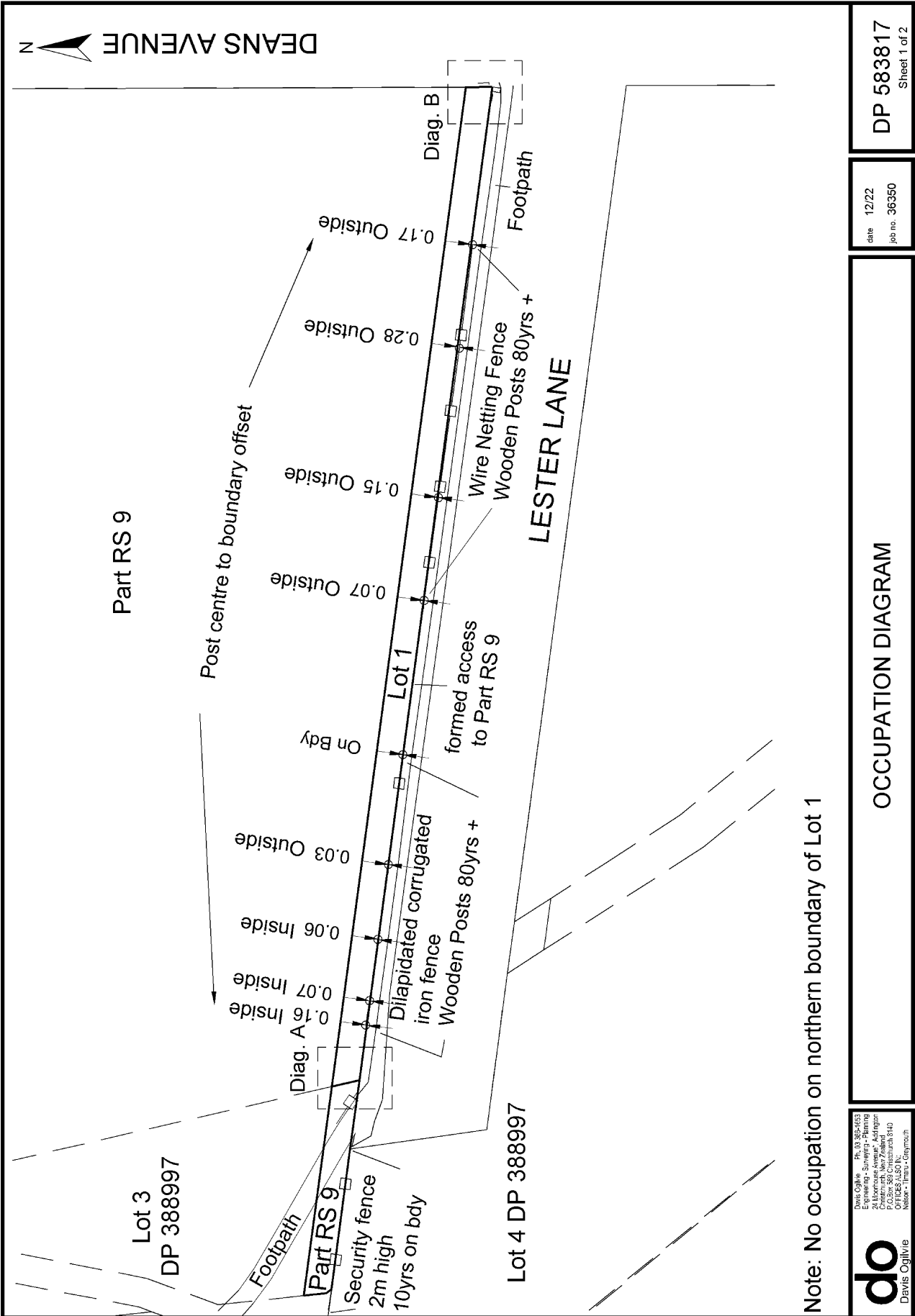
Survey Number DP 583817

Meridional Circuit Mount Pleasant 2000

From	To	Code	Bearing	Adpt Surv	Bearing Correction	Distance	Adpt Surv	Class
IT 2 DP 583817	RN II SO 376333	ob35	180°14'30" M			182.80 M		

Mark Name	Mark Condition	Description
BOLT 1 DP 583817		Fl. in footpath
IS II SO 9568		flush in seal
IS III DP 53315		flush in seal
IT 2 DP 583817		Fl. back of kerb
RN II SO 376333		Masonry nail flush in kerb.
IT III SO 9568	Searched For and Not Found	

*** End of Report ***



Note: No occupation on northern boundary of Lot 1

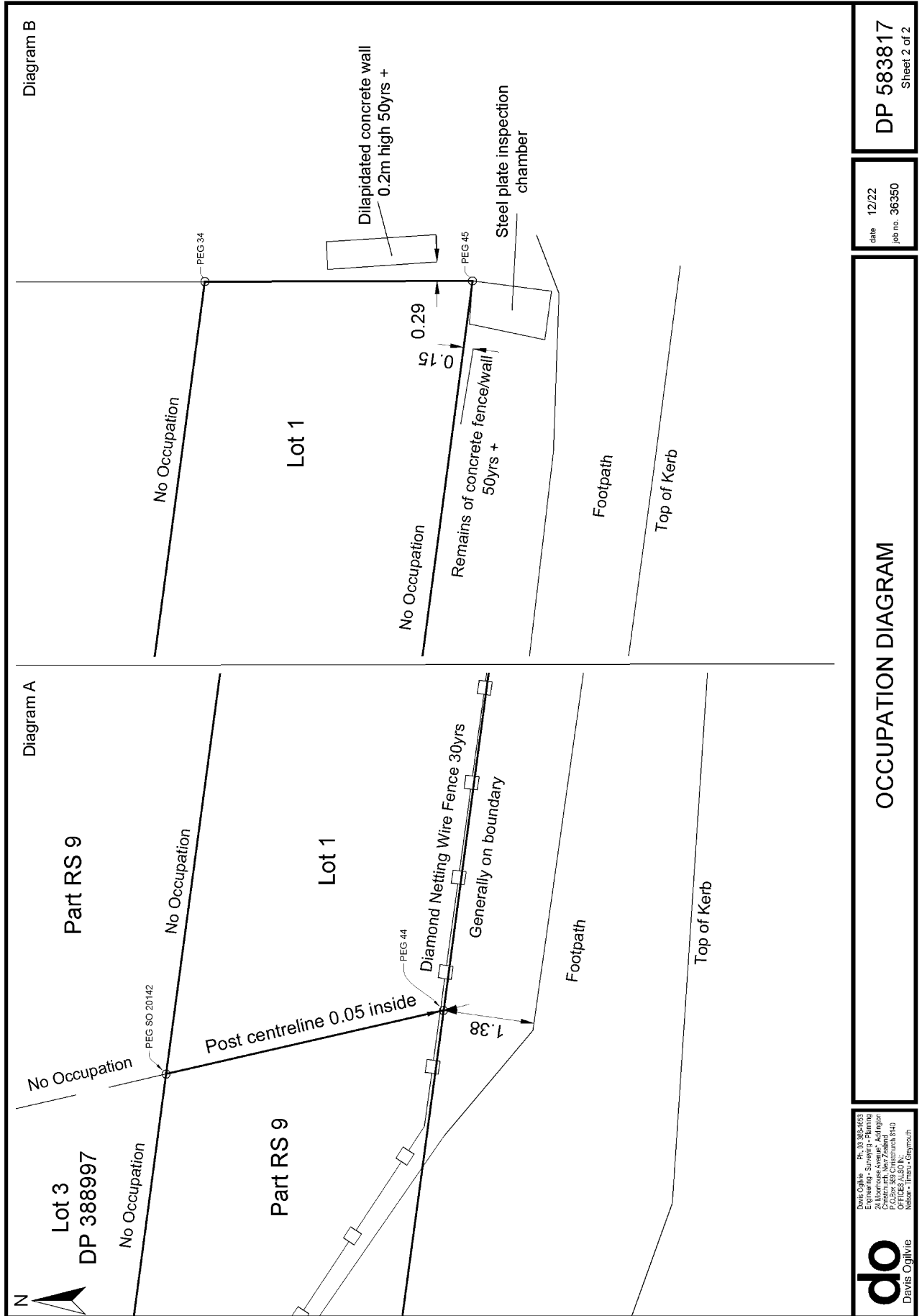
do
Davis Ogilvie
Engineering - Planning
Christchurch, New Zealand
P.O. Box 368 Christchurch 8140
New Zealand
Phone: +64 3 365 1433
Fax: +64 3 365 1433

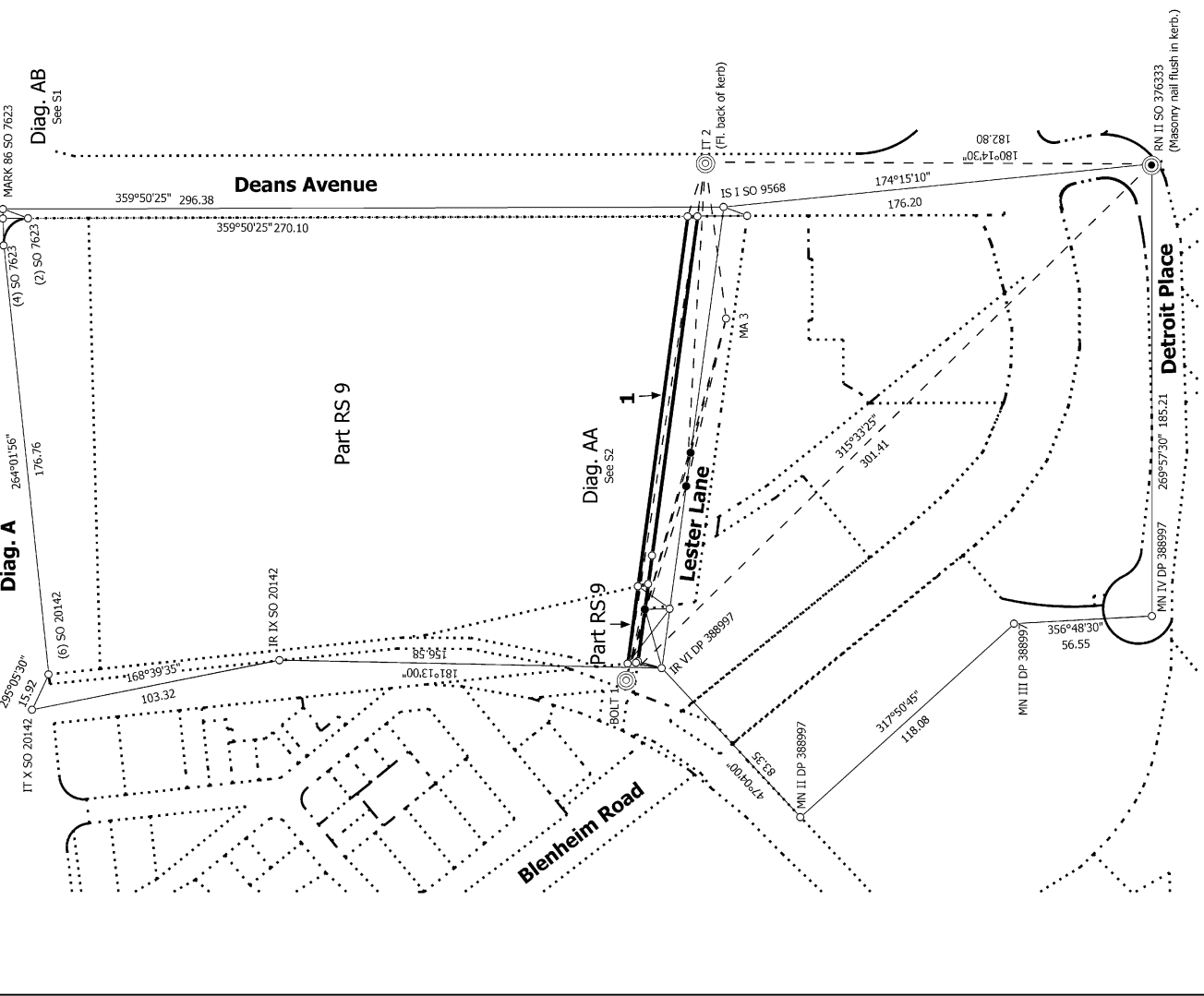
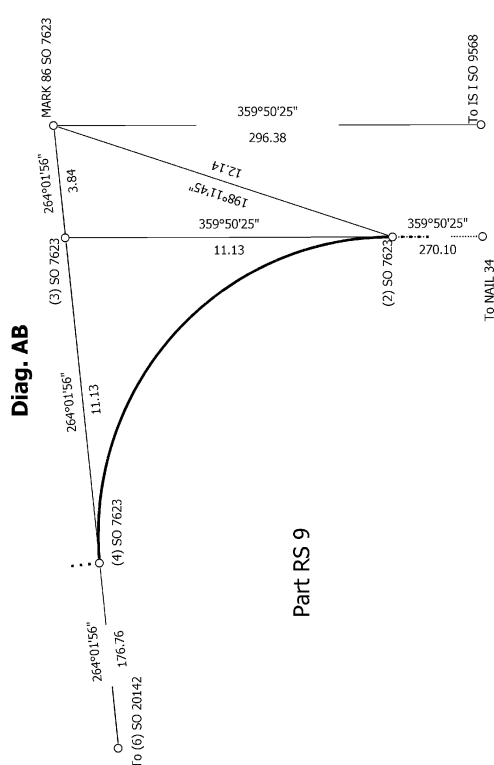
OCCUPATION DIAGRAM

date 12/22
job no. 36350

DP 583817
Sheet 1 of 2

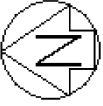
Occupation Diagram



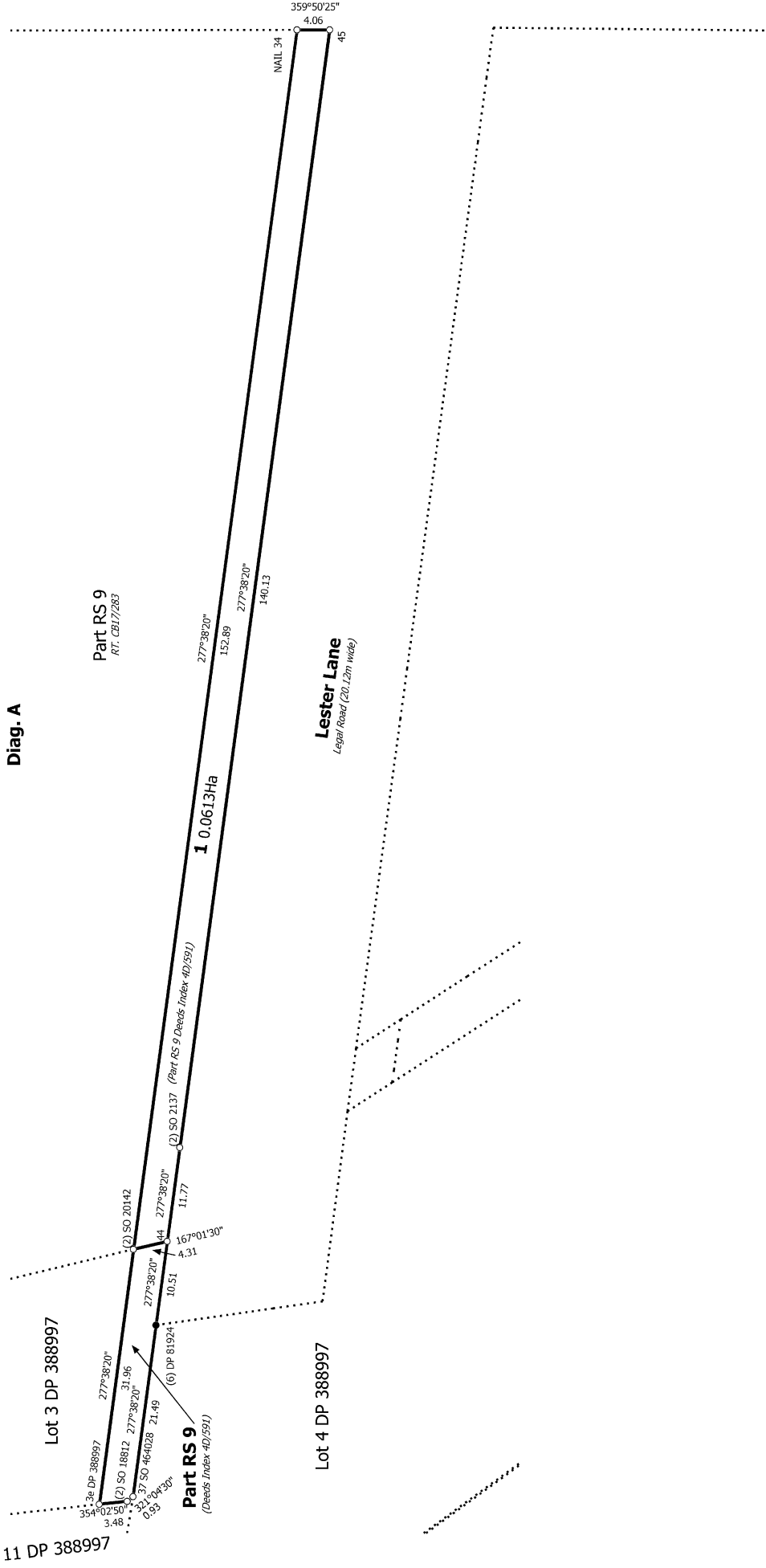


S 1/2

<p>Land District: Canterbury</p> <p>Digitally Generated Plan</p> <p>Generated on: 21/03/2023 1:17pm Page 8 of 10</p>	<p>LOT 1 BEING ADVERSE POSSESSION OF PART RURAL SECTION 9</p>	<p>Surveyor: Christopher Paul Hopper Firm: Davis Ogilvie & Partners Ltd (Christchurch) Date of Survey: 5/12/2022</p>	<p>Record of Survey LT 583817 Approved on: 21/03/2023</p>
---	--	--	---



Deans Avenue
Legal Road (Width Varies)



Diag. A

Part RS 9
RT. CBI/7/283

Lester Lane
Legal Road (20.12m wide)

1 0.0613Ha

Lot 3 DP 388997

Lot 4 DP 388997

Lot 11 DP 388997

Part RS 9
(Deeds Index 40/591)

T 1/1

LOT 1 BEING ADVERSE POSSESSION OF PART RURAL SECTION 9

Land District: Canterbury

Digitally Generated Plan

Generated on: 21/03/2023 1:17pm Page 10 of 10

Surveyor: Christopher Paul Hopper
Firm: Davis Ogilvie & Partners Ltd (Christc)
Date of Survey: 5/12/2022

Record of Survey
LT 583817
Approved on: 21/03/2023