



Record of Survey - LT 584372

Survey Number LT 584372
Surveyor Reference 2158 Willetts
Surveyor Paul Jeffrey Andrews
Survey Firm SurveyOne Limited (Rotorua)
Surveyor Declaration I Paul Jeffrey Andrews, being a licensed cadastral surveyor, certify that--
(a) this dataset provided by me and its related survey are accurate, correct and in accordance with the Cadastral Survey Act 2002 and Cadastral Survey Rules 2021; and
(b) the survey was undertaken by me or under my personal direction.
Declared on 03 Apr 2023 06:21 PM

Survey Details

Dataset Description Lots 1 and 2 being adverse possession over parts of Sections 8 and 9 Block XXIV Mamaku Village
Purpose Application
Status Approved as to Survey **Type** Survey
Land District South Auckland **Survey Class** Class A
Meridional Circuit Bay of Plenty 2000 **Vertical Datum** None

Survey Dates

Surveyed Date 29/10/2022 **Certified Date** 03/04/2023
Submitted Date 03/04/2023 18:21:22 **Survey Approval Date** 04/04/2023
Deposit Date

Referenced Surveys

Survey Number	Land District	Bearing Correction
SO 49866	South Auckland	0°00'00"
SO 425484	South Auckland	0°00'00"
SO 503288	South Auckland	0°00'00"
SO 11240	South Auckland	0°00'00"

Territorial Authorities

Rotorua District

Comprised In

RT SA116/148

Created Parcels

Parcels	Parcel Intent	Area	RT Reference
Lot 1 Deposited Plan 584372	Fee Simple Title	0.3885 Ha	1113155
Lot 2 Deposited Plan 584372	Fee Simple Title	0.5526 Ha	1113155
Part Section 8 Block XXIV Village of Mamaku	Residue Parcel	0.0162 Ha	
Part Section 9 Block XXIV Village of Mamaku	Residue Parcel	0.0121 Ha	
Total Area		<u>0.9694 Ha</u>	

Mark and Vector

Survey Number DP 584372

Meridional Circuit Bay of Plenty 2000

From	To	Code	Bearing	Adpt Surv	Bearing Correction	Distance	Adpt Surv	Class
IT III DPS 65089	NAIL C DP 584372	ob5	113°13'51" M			734.10 M		
NAIL C DP 584372	IT IX SO 49866	ob43	56°35'20" M			100.59 M		
NAIL C DP 584372	PIN 6 SO 425484	ob44	65°19'00" M			96.89 M		
PIN 6 SO 425484	IT IX SO 49866	ob33	344°44'00" M			15.47 M		
NAIL C DP 584372	NAIL A DP 584372	ob45	216°49'00" M			20.53 M		
NAIL A DP 584372	IT IX SO 49866	ob3	53°16'30" M			120.12 M		
NAIL A DP 584372	PIN 6 SO 425484	ob4	60°26'30" M			115.36 M		
NAIL C DP 584372	PIN 8 SO 425484	ob46	242°03'00" M			19.58 M		
PIN 8 SO 425484	NAIL A DP 584372	ob31	145°30'00" M			8.81 M		
PIN 8 SO 425484	PIN 6 SO 425484	ob32	64°45'50" A	SO 425484	0°00'00"	116.45 A	SO 425484	
IT IX SO 49866	PIN 9 SO 425484	ob35	60°56'30" M			154.80 M		
PIN 9 SO 425484	PIN 6 SO 425484	ob30	235°31'20" A	SO 425484	0°00'00"	159.20 A	SO 425484	
IT IX SO 49866	IS 10 SO 425484	ob36	60°26'00" M			170.71 M		
IS 10 SO 425484	PIN 9 SO 425484	ob29	235°31'20" A	SO 425484	0°00'00"	15.98 A	SO 425484	
IT IX SO 49866	PIN 5 SO 425484	ob37	322°59'40" M			71.78 M		
PIN 5 SO 425484	NAIL C DP 584372	ob17	199°52'40" M			119.86 M		
PIN 5 SO 425484	PIN 6 SO 425484	ob18	146°48'00" M			86.34 M		
PIN 5 SO 425484	PIN 8 SO 425484	ob19	205°28'00" M			135.01 M		
IT IX SO 49866	IB 1 SO 503288	ob38	259°13'40" A	SO 503288	0°00'00"	136.51 A	SO 503288	
IB 1 SO 503288	PIN 8 SO 425484	ob0	139°56'00" A	SO 503288	0°00'00"	51.02 A	SO 503288	
PIN 5 SO 425484	PIN 4 SO 425484	ob20	295°11'40" M			78.94 M		
PIN 4 SO 425484	PIN 6 SO 425484	ob15	131°43'00" A	SO 425484	0°00'00"	159.04 A	SO 425484	
PIN 4 SO 425484	PIN 2 SO 425484	ob16	338°04'40" A	SO 425484	0°00'00"	361.58 A	SO 425484	
PIN 2 SO 425484	IS III DPS 83116	ob34	235°22'30" A	SO 425484	0°00'00"	155.02 A	SO 425484	
IS III DPS 83116	IT III DPS 65089	ob42	254°43'55" A	SO 425484	0°00'00"	395.32 A	SO 425484	
IT IX SO 49866	IB 2 SO 503288	ob39	279°24'30" A	SO 503288	0°00'00"	179.63 A	SO 503288	
IB 2 SO 503288	IB 1 SO 503288	ob2	141°51'00" A	SO 503288	0°00'00"	69.79 A	SO 503288	
IB 1 SO 503288	PEG 8 SO 503288	ob1	144°59'00" A	SO 503288	0°00'00"	44.18 A	SO 503288	
PEG 4 SO 503288	IB 2 SO 503288	ob13	284°09'30" A	SO 503288	0°00'00"	17.91 A	SO 503288	
NAIL C DP 584372	PEG 8 SO 503288	ob47	255°43'00" M			25.57 M		
PIN 5 SO 425484	PEG 4 SO 503288	ob21	254°30'20" M			121.05 M		
IT IX SO 49866	PEG SO 49866	ob40	49°12'00" A	SO 49866	0°00'00"	11.80 A	SO 49866	

Mark and Vector

Survey Number DP 584372

Meridional Circuit Bay of Plenty 2000

From	To	Code	Bearing	Adpt Surv	Bearing Correction	Distance	Adpt Surv	Class
PEG SO 49866	PEG 1 DP 584372	ob7	239°27'30"	C		40.23 A	SO 11240	
PEG 1 DP 584372	PEG 4 DP 584372	ob11	239°27'30"	C		56.13 A	SO 11240	Class A
PEG 4 DP 584372	PEG 8 SO 503288	ob8	239°27'30"	C		40.23 A	SO 11240	Class A
IT IX SO 49866	PEG 1 DP 584372	ob41	243°41'00"	M		28.71 M		
PIN 5 SO 425484	PEG 1 DP 584372	ob22	165°59'30"	M		72.19 M		
NAIL C DP 584372	PEG 4 DP 584372	ob48	34°55'00"	M		17.24 M		
PIN 5 SO 425484	PEG 4 DP 584372	ob23	197°24'00"	M		103.29 M		
PIN 5 SO 425484	PEG 2 DP 584372	ob24	296°15'00"	M		37.53 M		
PEG 2 DP 584372	PEG 3 DP 584372	ob10	239°27'30"	C		56.13 A	SO 11240	Class A
PEG 3 DP 584372	PEG 4 SO 503288	ob6	239°27'30"	C		40.23 A	SO 11240	Class A
PIN 5 SO 425484	PEG 3 DP 584372	ob25	261°44'20"	M		82.85 M		
NAIL C DP 584372	PEG 2 DP 584372	ob49	3°08'40"	M		129.50 M		
NAIL C DP 584372	PEG 3 DP 584372	ob50	337°45'40"	M		108.92 M		
PEG 1 DP 584372	PEG 5 DP 584372	ob12	329°28'00"	C		99.48 C		Class A
PEG 5 DP 584372	PEG 2 DP 584372	ob54	329°28'00"	C		1.14 C		Class A
PEG 4 DP 584372	PEG 6 DP 584372	ob9	329°28'30"	C		97.17 C		Class A
PEG 6 DP 584372	PEG 3 DP 584372	ob55	329°28'30"	C		3.45 C		Class A
PEG 8 SO 503288	PEG 7 DP 584372	ob14	329°28'30"	A	SO 503288	0°00'00"	95.97 C	Class A
PEG 7 DP 584372	PEG 4 SO 503288	ob57	329°28'30"	A	SO 503288	0°00'00"	4.65 C	Class A
NAIL C DP 584372	PEG 7 DP 584372	ob51	316°05'00"	M		106.01 M		
NAIL C DP 584372	PEG 6 DP 584372	ob52	338°01'30"	M		105.50 M		
PIN 5 SO 425484	PEG 6 DP 584372	ob26	259°30'00"	M		81.61 M		
PIN 5 SO 425484	PEG 8 DP 584372	ob27	263°46'00"	M		69.85 M		
PEG 8 DP 584372	NAIL C DP 584372	ob59	164°44'00"	M		108.96 M		

Mark and Vector

Survey Number DP 584372

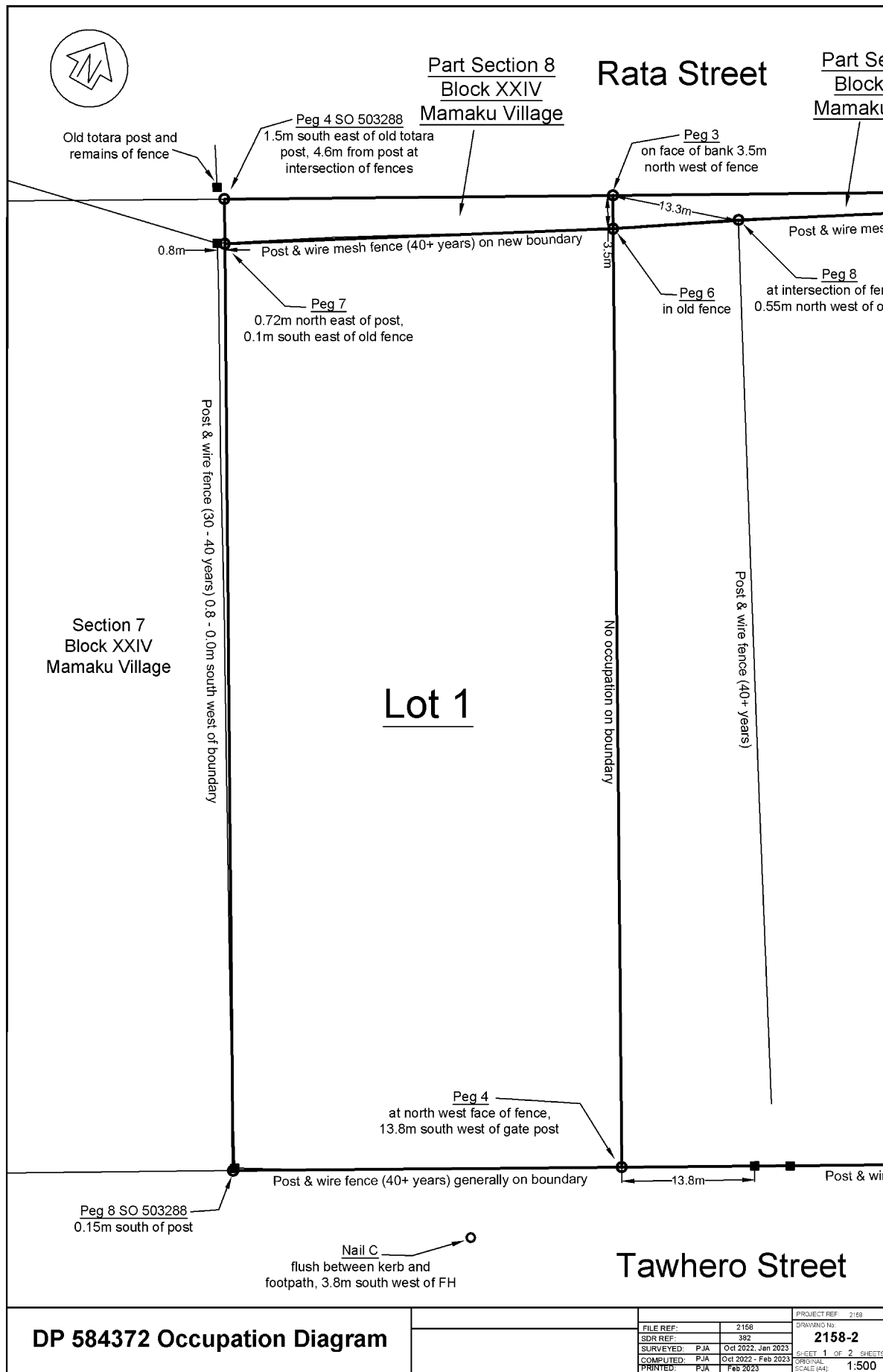
Meridional Circuit Bay of Plenty 2000

From	To	Code	Bearing	Adpt Surv	Bearing Correction	Distance	Adpt Surv	Class
PIN 5 SO 425484	PEG 5 DP 584372	ob28	295°17'00"	M		36.58 M		
NAIL C DP 584372	PEG 5 DP 584372	ob53	3°25'30"	M		128.57 M		
PEG 7 DP 584372	PEG 6 DP 584372	ob58	57°45'00"	C		40.25 C		Class A
PEG 6 DP 584372	PEG 8 DP 584372	ob56	55°59'00"	C		13.03 C		Class A
PEG 8 DP 584372	PEG 5 DP 584372	ob60	57°27'00"	C		43.14 C		Class A

Mark Name	Mark Condition	Description
IS 10 SO 425484		Flush at back of footpath
NAIL A DP 584372		Nail flush between kerb and footpath
NAIL C DP 584372		Nail flush between kerb and footpath, 3.8m SW of FH
PEG 1 DP 584372		Peg SO 11240 remains renewed. 0.1m NW of fce, 7.6m SW of post
PEG 2 DP 584372		Peg SO 11240 remains renewed, 1.1m N of old post, 0.85m NE of fce
PEG 3 DP 584372		Peg SO 11240 remains renewed on bank, 3.5m NW of fce
PEG 4 DP 584372		Peg SO 11240 reinstated at NW face of fce, 13.8m SW of gate post.
PEG 4 SO 503288		1.5m SE of old totara post, 4.6m NW of post at intersection of fces
PEG 5 DP 584372		0.14m NE of old post
PEG 6 DP 584372		In old fence
PEG 7 DP 584372		0.72m NE of post, 0.1m SE of old fce
PEG 8 DP 584372		Peg at intersection of fences, 0.55m NW of old post
PEG 8 SO 503288		0.15m S of post
PIN 4 SO 425484		Alloy plug flush in kerb
PIN 5 SO 425484		Alloy plug flush in kerb, 6.05m S of #30 xing
PIN 6 SO 425484		Alloy plug flush in kerb
PIN 8 SO 425484		Alloy plug flush between kerb and footpath
PIN 9 SO 425484		Alloy plug flush in kerb

*** End of Report ***

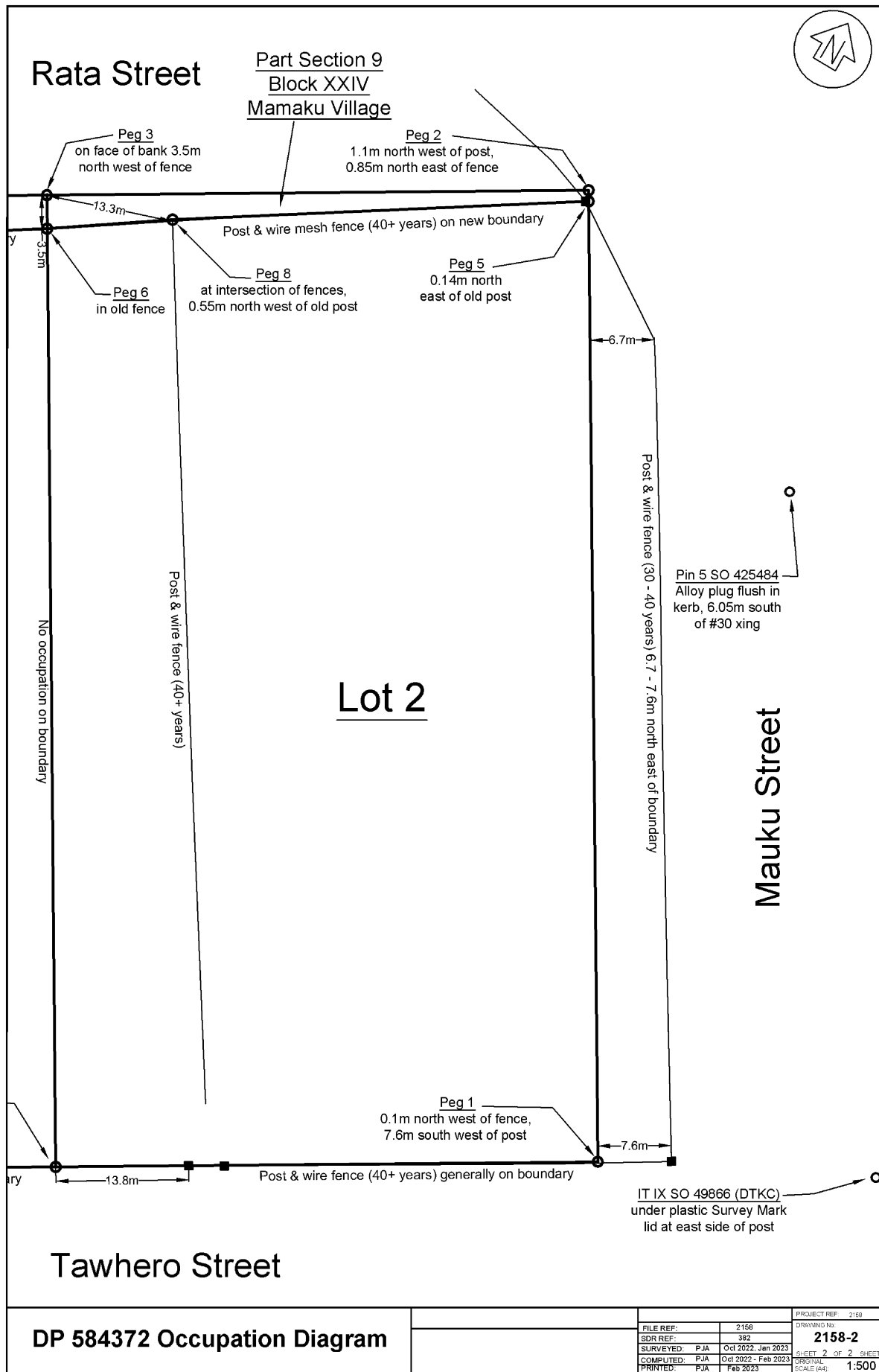
Occupation Diagram



DP 584372 Occupation Diagram

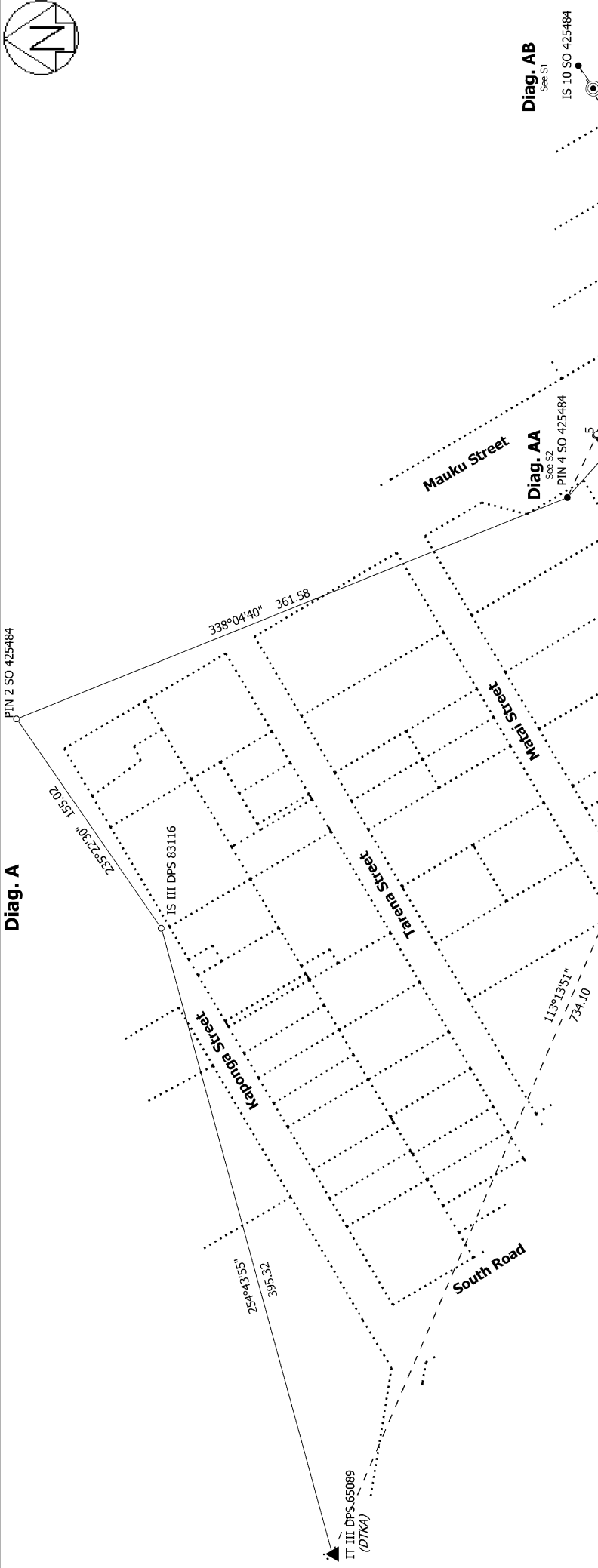
FILE REF:	2168	PROJECT REF:	2168
SDR REF:	382	DRAWING NO:	2158-2
SURVEYED:	PJA Oct 2022, Jan 2023	SHEET	1 OF 2 SHEETS
COMPUTED:	PJA Oct 2022 - Feb 2023	ORIGINAL	
PRINTED:	PJA Feb 2023	SCALE (A4):	1:500

Occupation Diagram

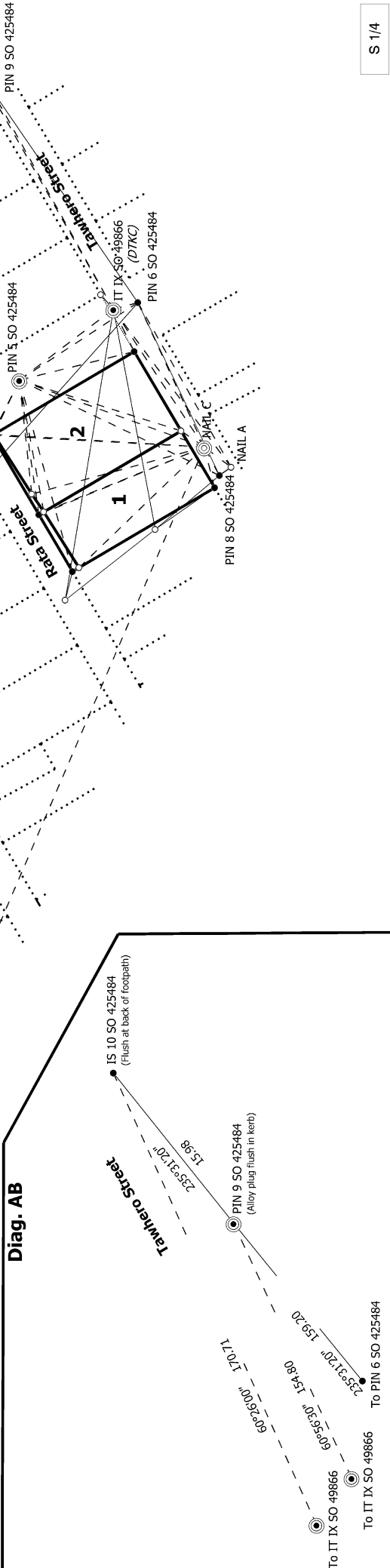




Diag. A



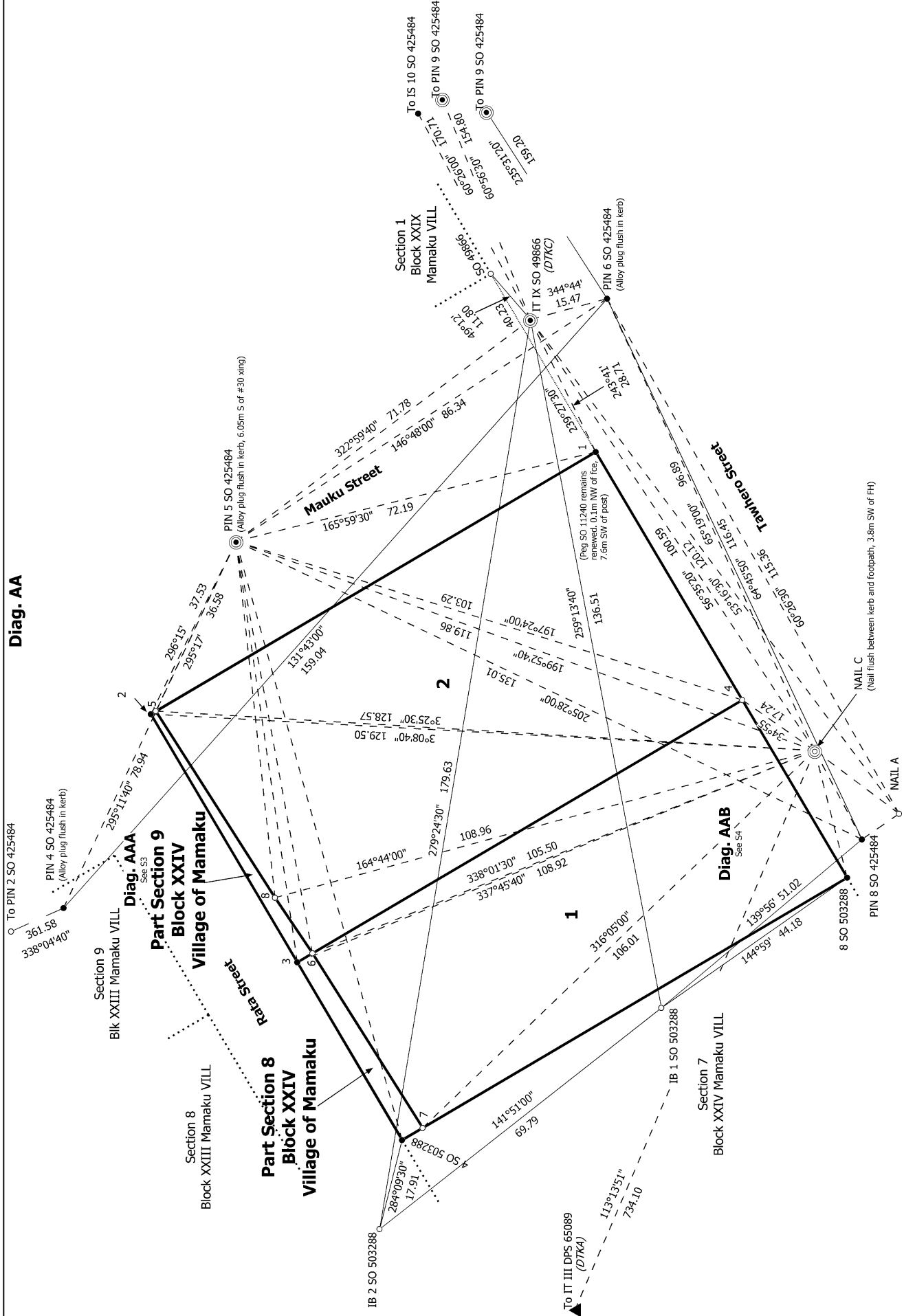
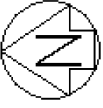
Diag. AB



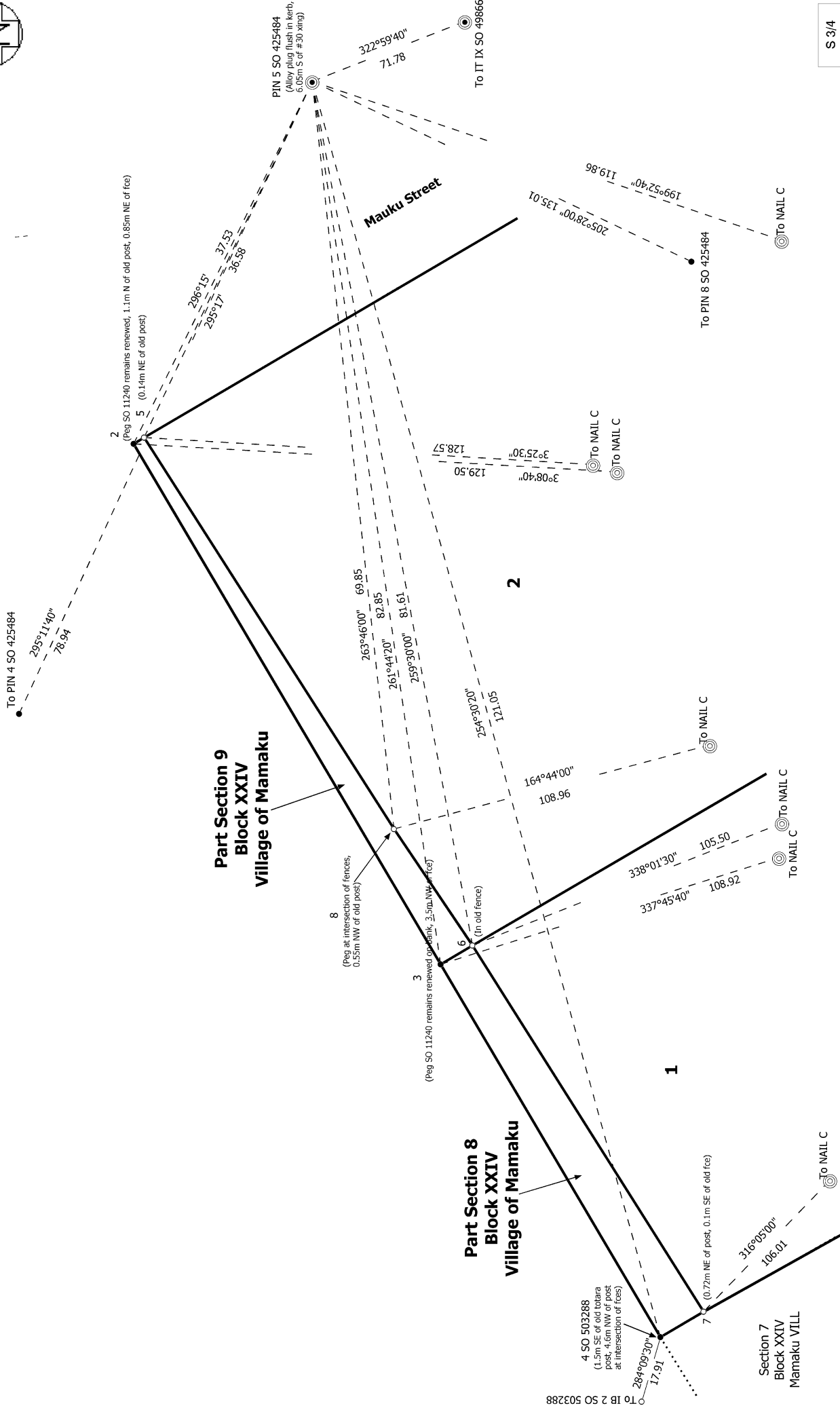
S 1/4

<p>Land District: South Auckland</p> <p>Digitally Generated Plan</p> <p>Generated on: 04/04/2023 12:45pm Page 7 of 11</p>	<p>Lots 1 and 2 being adverse possession over parts of Sections 8 and 9 Block XXIV Mamaku Village</p> <p>Surveyor: Paul Jeffrey Andrews Firm: SurveyOne Limited (Rotorua) Date of Survey: 29/10/2022</p>	<p>Record of Survey LT 584372 Approved on: 4/04/2023</p>
--	---	--

Diag. AA



Diag. AAA

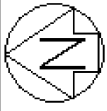


Land District: South Auckland
 Digitally Generated Plan
 Generated on: 04/04/2023 12:45:56 PM Page 9 of 11

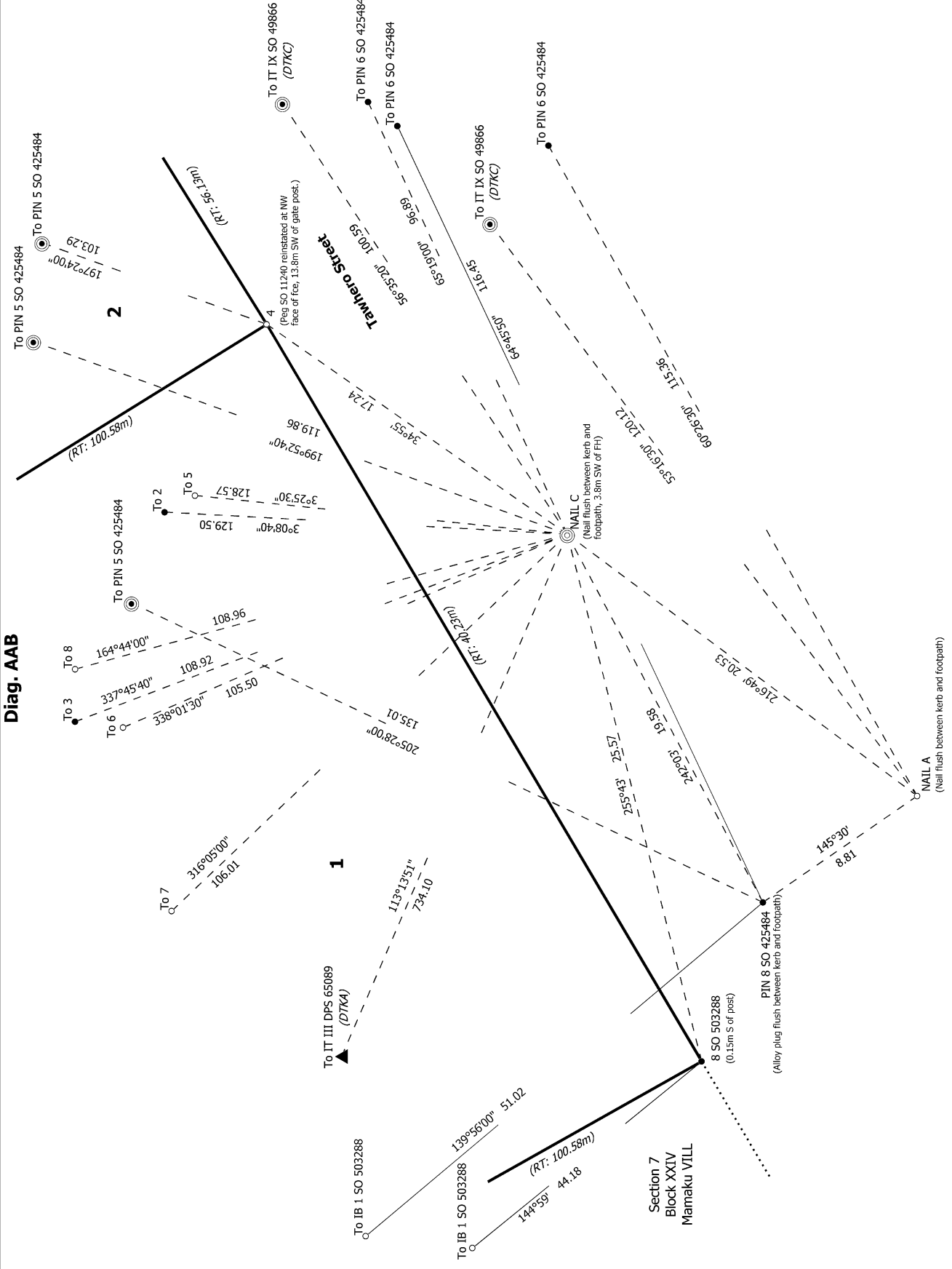
Record of Survey
 LT 584372
 Approved on: 4/04/2023

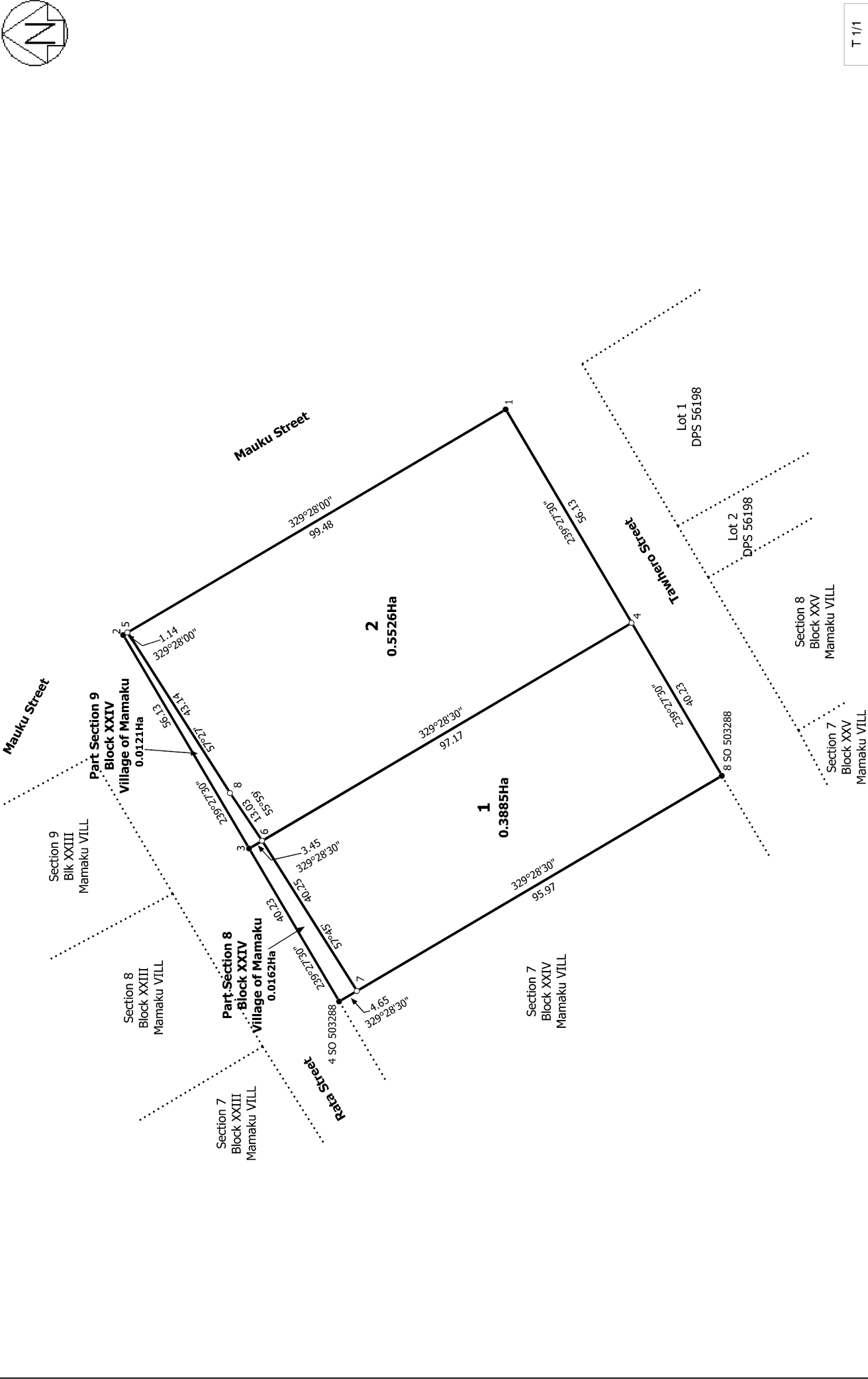
Surveyor: Paul Jeffrey Andrews
 Firm: SurveyOne Limited (Rotorua)
 Date of Survey: 29/10/2022

Lots 1 and 2 being adverse possession over parts of Sections 8 and 9 Block XXIV Mamaku Village



Diag. AAB





T 1/1

Lots 1 and 2 being adverse possession over parts of Sections 8 and 9 Block XXIV Mamaku Village

Surveyor: Paul Jeffrey Andrews
Firm: SurveyOne Limited (Rotorua)
Date of Survey: 29/10/2022

Record of Survey
LT 584372
Approved on: 4/04/2023