



Record of Survey - LT 586707

Survey Number	LT 586707
Surveyor Reference	20B98 - 314 Gap
Surveyor	Donald Ralph Moir
Survey Firm	Ralph Moir & Associates
Surveyor Declaration	I Donald Ralph Moir, being a licensed cadastral surveyor, certify that-- (a) this dataset provided by me and its related survey are accurate, correct and in accordance with the Cadastral Survey Act 2002 and Cadastral Survey Rules 2021; and (b) the survey was undertaken by me or under my personal direction. Declared on 31 Mar 2023 11:29 AM

Survey Details

Dataset Description	Lots 1 & 2 being a subdivision of Part Section 1 Block II Winton Hundred		
Purpose	LT Subdivision		
Status	Approved as to Survey	Type	Survey
Land District	Southland	Survey Class	Class B
Meridional Circuit	Bluff 2000	Vertical Datum	None

Survey Dates

Surveyed Date	04/01/2023	Certified Date	31/03/2023
Submitted Date	31/03/2023 11:29:48	Survey Approval Date	03/04/2023
Deposit Date			

Referenced Surveys

Survey Number	Land District	Bearing Correction
DP 316030	Southland	-0°00'30"
DP 14125	Southland	-0°00'30"
DP 13548	Southland	-0°00'30"
SO 12342	Southland	-0°00'30"
SO 377345	Southland	0°00'00"

Territorial Authorities

Southland District

Comprised In

RT SL127/256 Ltd

Created Parcels

Parcels	Parcel Intent	Area	RT Reference
Lot 1 Deposited Plan 586707	Fee Simple Title	2.0085 Ha	1110972
Lot 2 Deposited Plan 586707	Fee Simple Title	4.6781 Ha	1110973
Total Area		6.6866 Ha	

Mark and Vector

Survey Number DP 586707

Meridional Circuit Bluff 2000

From	To	Code	Bearing	Adpt Surv	Bearing Correction	Distance	Adpt Surv	Class
IT V SO 8018	IS VI SO 8018	ob0	269°43'10" M			312.90 M		
IS VI SO 8018	IT III DP 13548	ob5	166°16'50" M			297.66 M		
IT III DP 13548	IT I DP 14125	ob8	92°32'40" M			244.64 M		
IT I DP 14125	IT V SO 8018	ob13	359°36'10" M			301.57 M		
IS VI SO 8018	IT II SO 12342	ob6	88°24'05" M			312.83 M		
IT II SO 12342	IT V SO 8018	ob15	178°31'00" M			7.20 M		
IT II SO 12342	IT II SO 8018	ob16	37°52'15" M			608.29 M		
IT II SO 8018	IT V SO 8018	ob20	217°26'40" M			613.88 M		
IT III DP 13548	IT VI DP 14125	ob9	231°08'58" M			319.47 M		
IT VI DP 14125	IT I DP 14125	ob21	68°58'42" M			528.36 M		
IS VI SO 8018	PEG (1) DP 13548	ob7	100°04'30" M			70.01 M		
IT III DP 13548	POST (7) DP 13548	ob10	125°41'30" M			17.99 M		
IT III DP 13548	POST DP 14125	ob11	157°27'30" M			11.40 M		
IT I DP 14125	PEG DP 14125	ob14	281°24'30" M			4.96 M		
IT II SO 12342	PEG SO 12342	ob17	209°51'30" M			23.54 M		
IT II SO 12342	PEG F DP 586707	ob18	186°39'30" M			27.58 M		
POST (7) DP 13548	PEG DP 14125	ob23	89°50'40" A	DP 14125	-0°00'30"	224.93 A	DP 14125	Class B
PEG DP 14125	PEG F DP 586707	ob24	359°52'30" A	DP 14125	-0°00'30"	280.38 C		Class B
PEG F DP 586707	PEG SO 12342	ob26	309°18'30" A	SO 12342	-0°00'30"	11.02 A	SO 12342	Class B
PEG SO 12342	PEG A DP 586707	ob25	269°51'30" A	SO 12342	-0°00'30"	89.17 C		Class B
PEG A DP 586707	PEG (1) DP 13548	ob27	269°51'30" A	SO 12342	-0°00'30"	142.89 C		Class B
PEG (1) DP 13548	POST E DP 586707	ob22	176°45'30" A	SO 12342	-0°00'30"	142.34 C		Class B
POST E DP 586707	POST (7) DP 13548	ob29	176°45'30" A	SO 12342	-0°00'30"	145.53 C		Class B
PEG A DP 586707	POST B DP 586707	ob28	178°28'30" C			83.12 C		Class B
POST B DP 586707	POST C DP 586707	ob30	154°35'00" C			3.07 C		Class B
POST C DP 586707	POST D DP 586707	ob31	177°36'40" C			56.07 C		Class B
POST D DP 586707	POST E DP 586707	ob32	269°45'55" C			140.71 C		Class B
IT V SO 8018	PEG A DP 586707	ob1	262°25'40" M			101.97 M		
IT V SO 8018	POST B DP 586707	ob2	225°41'20" M			138.17 M		

Mark and Vector

Survey Number DP 586707

Meridional Circuit Bluff 2000

From	To	Code	Bearing	Adpt Surv	Bearing Correction	Distance	Adpt Surv	Class
IT V SO 8018	POST C DP 586707	ob3	224°29'20" M			139.20 M		
IT V SO 8018	POST D DP 586707	ob4	211°30'40" M			182.18 M		
IT III DP 13548	POST E DP 586707	ob12	2°42'40" M			134.96 M		
IT II SO 12342	IT I DP 14125	ob19	179°34'35" M			308.77 M		

Mark Name	Mark Condition	Description
IS VI SO 8018		dn.0.15 in seal
IT I DP 14125		dn.0.2 in verg
IT II SO 12342		dn.0.3 in verg
IT II SO 8018		dn0.3 edge of seal
IT III DP 13548		dn.0.3
IT V SO 8018		dn.0.05 in seal
IT VI DP 14125		dn.0.1 in gravel
PEG F DP 586707		POST SO 12342 reinstated
POST B DP 586707		Disk Wooden Post
POST C DP 586707		Disk Wooden Post
POST D DP 586707		Concrete Post
POST E DP 586707		Disk on Deer Post

*** End of Report ***

OCCUPATION DIAGRAM

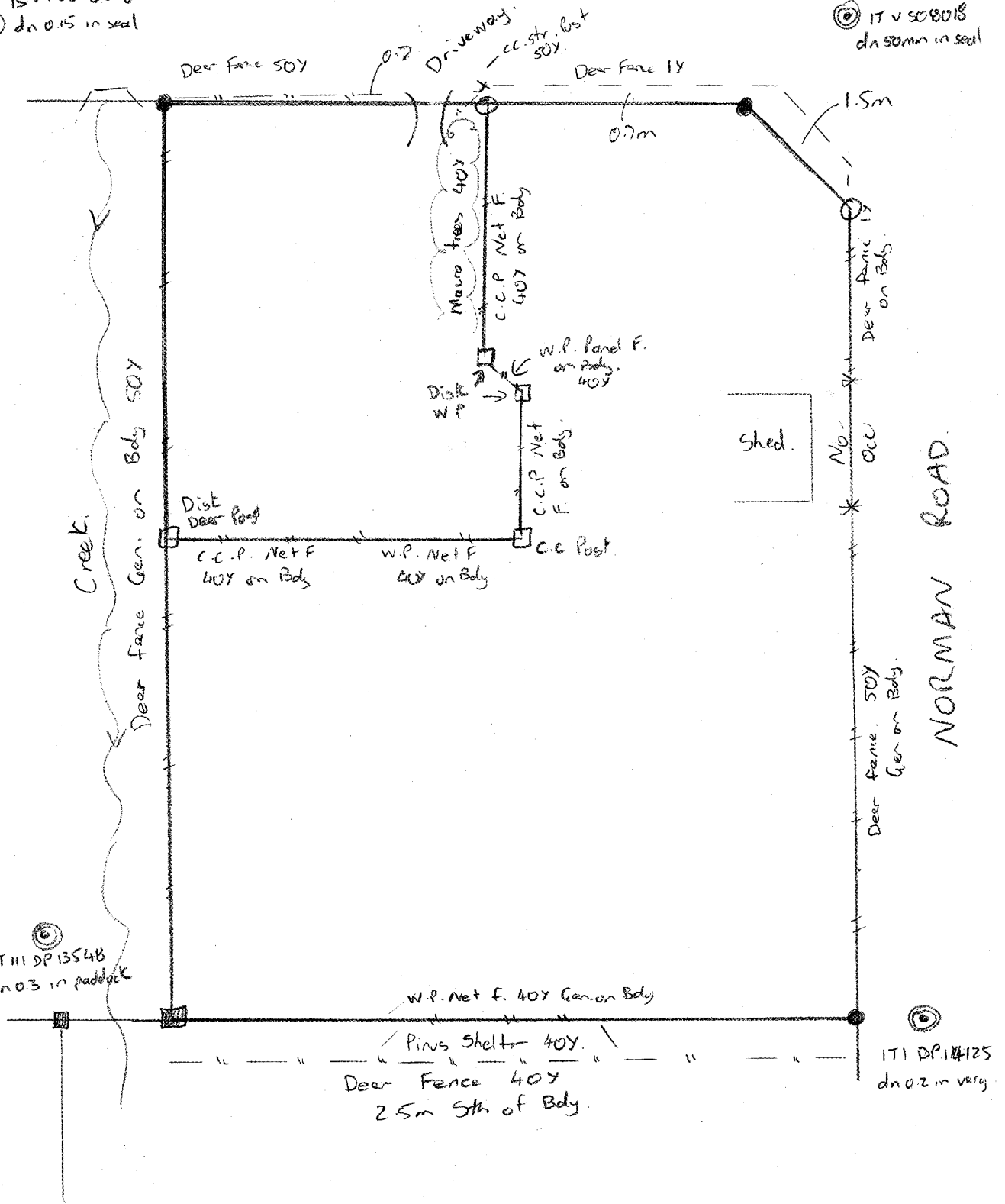
IT11 5012342
dn 0.3 in
very

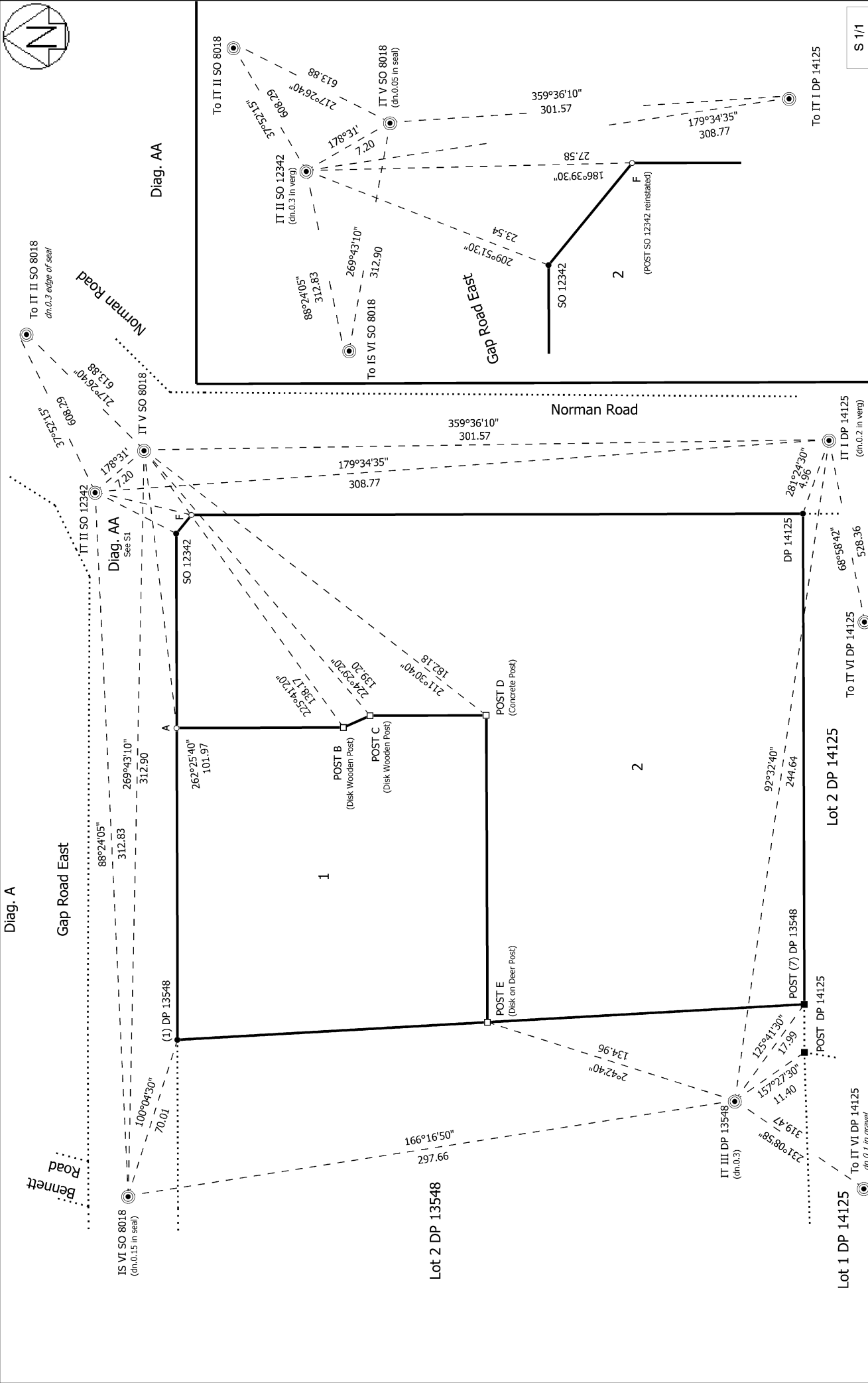


ISVI 50 8018
dn 0.15 in seal

ITV 508018
dn 50mm in seal

GAP ROAD.





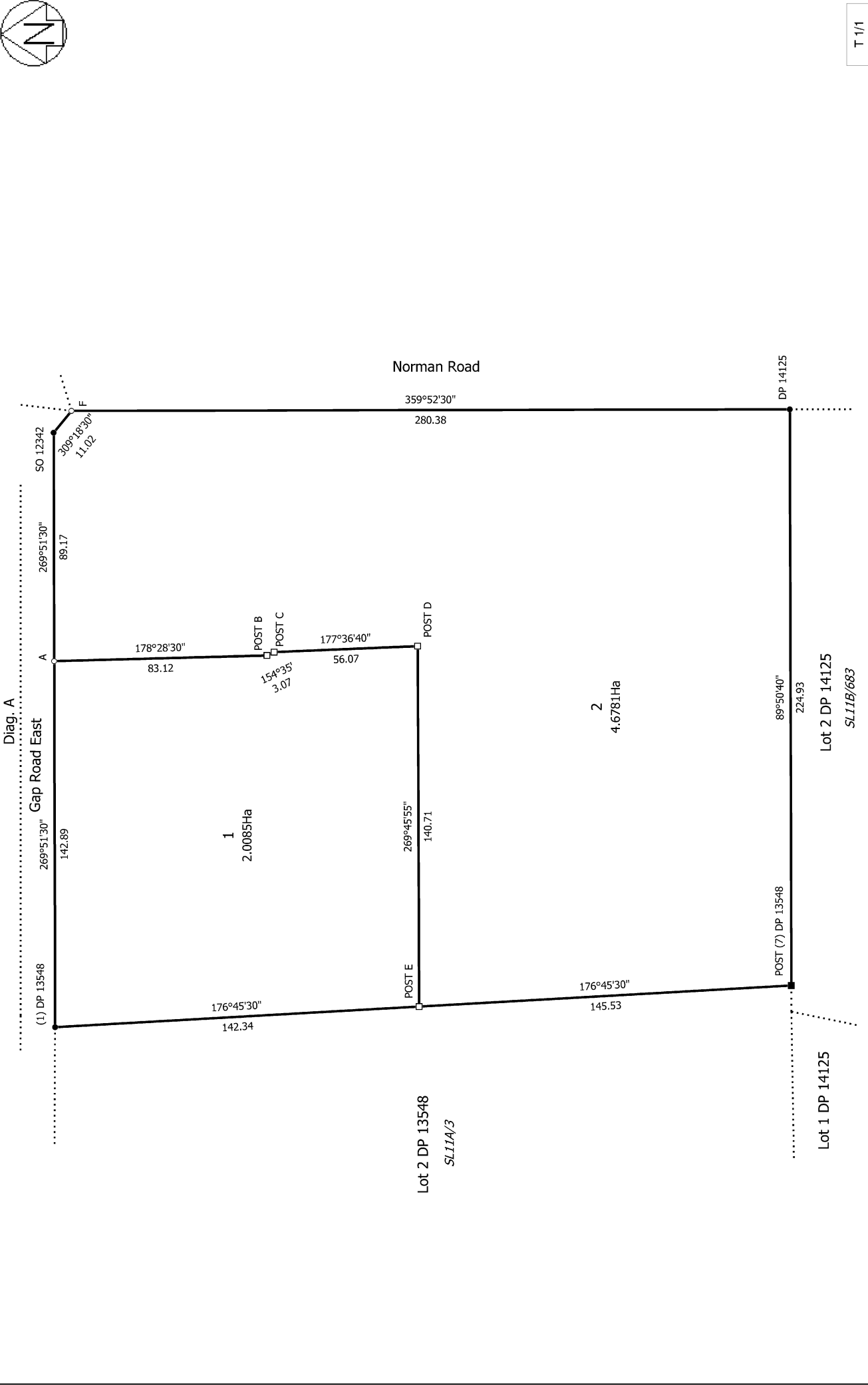
S 1/1

Record of Survey
 LT 586707
 Approved on: 3/04/2023

Surveyor: Donald Ralph Moir
 Firm: Ralph Moir & Associates
 Date of Survey: 4/01/2023

Lots 1 & 2 being a subdivision of Part Section 1 Block II Winton Hundred

Land District: Southland
 Digitally Generated Plan
 Generated on: 03/04/2023 4:33pm Page 5 of 6



T 1/1

Land District: Southland

Digitally Generated Plan
Generated on: 03/04/2023 4:33pm Page 6 of 6

Lots 1 & 2 being a subdivision of Part Section 1 Block II Winton Hundred

Surveyor: Donald Ralph Moir
Firm: Ralph Moir & Associates
Date of Survey: 4/01/2023

Record of Survey
LT 586707
Approved on: 3/04/2023